



# PARTS MANUAL

C44BB C64BB

## *BB SERIES REPLACEMENT PARTS*

Beginning from Serial No. 21-0609001

*MODE: LEFT TO RIGHT OPERATION*

*RIGHT TO LEFT OPERATION*

---

HOBART FOOD EQUIPMENT CO., LTD.

09/2006

# Table Of Contents

<b>NO.</b>	<b>Description</b>	<b>Page</b>
1	BOOSTER ASSY.....	1
2	CONTROL BOX AND BOOSTER COVER.....	3
3	INLET PIPING.....	5
4	OUTLET PIPING I (C44BB).....	7
5	OUTLET PIPING I (C64BB).....	9
6	OUTLET PIPING II .....	11
7	COMPONENT PANEL(CONTROL BOX OF C44BB) .....	13
8	COMPONENT PANEL(CONTROL BOX OF C64BB) .....	15
9	CONVEYOR DRIVE MOTOR.....	17
10	WASH MOTOR AND PUMP UNIT.....	19

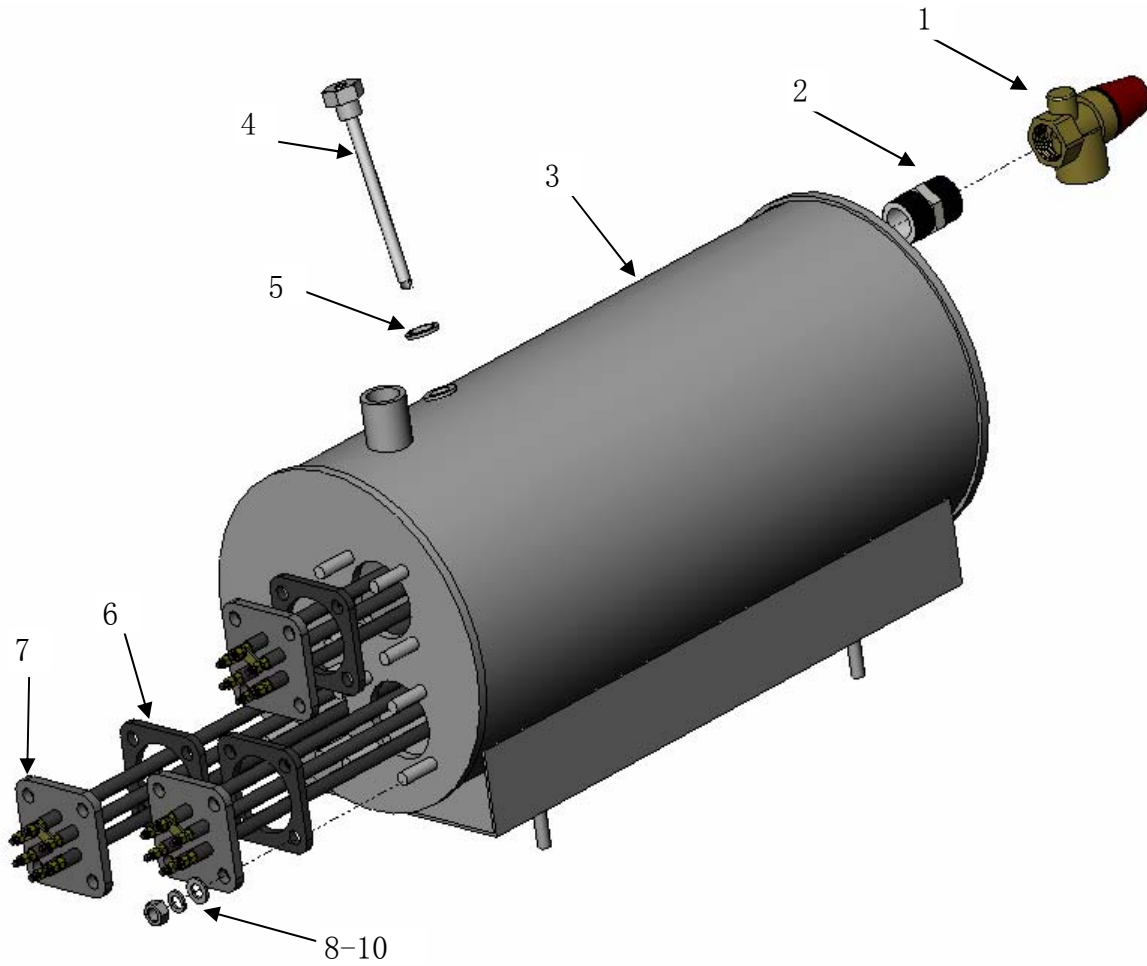
---

**SUPPLEMENTARY MANUAL BB SERIES REPLACEMENT PARTS**

---

**BOOSTER ASSY**

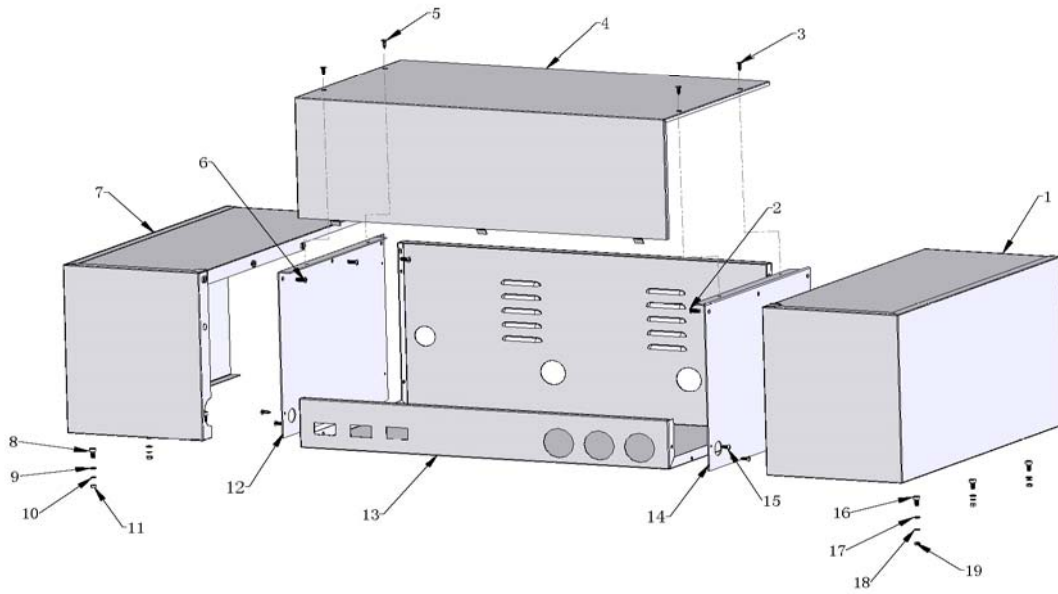
<b>NO.</b>	<b>PART NO.</b>	<b>NAME OF PART</b>	<b>AMT</b>
1	743856	Safety Valve 3/4.....	1
2	743848	Connector-Male 3/4.....	1
3	7152011	Barrel.....	1
4	7155203	Thermostat Sensor Tube.....	1
5	7155206	Seal Washer 14.....	1
6	743800-10	Gasket.....	3
7	743800-5	Electric Heater 9KW.....	3
8	NS-M8	Nut.....	12
9	WL-M8	Lockwasher.....	12
10	WS-M8	Washer.....	12



**Fig.1 BOOSTER ASSY**

**CONTROL BOX AND BOOSTER COVER**

<b>NO.</b>	<b>PART NO.</b>	<b>NAME OF PART</b>	<b>AMT</b>
1	7152013	Right Hood-Booster.....	1
2	SCH-M6-10	Cap Screw.....	3
3	ST4.8-10	Self-tapping Screw.....	2
4	7152015	Cover-Control Box.....	1
5	ST4.8-10	Self-tapping Screw.....	2
6	SCH-M6-10	Cap Screw.....	3
7	7152014	Left Hood-Booster.....	1
8	7152010	Pin.....	3
9	WS-M6	Washer.....	3
10	WL-M6	Lockwasher.....	3
11	NS-M6	Nut.....	3
12	7152005	Left-Base Plate.....	1
13	7152012	Control Box.....	1
14	7152004	Right-Base Plate.....	1
15	ST4.8-10	Self-tapping Screw.....	10
16	7152010	Pin.....	3
17	WS-M6	Washer.....	3
18	WL-M6	Lockwasher.....	3
19	NS-M6	Nut.....	3



**Fig.2 CONTROL BOX AND BOOSTER COVER**

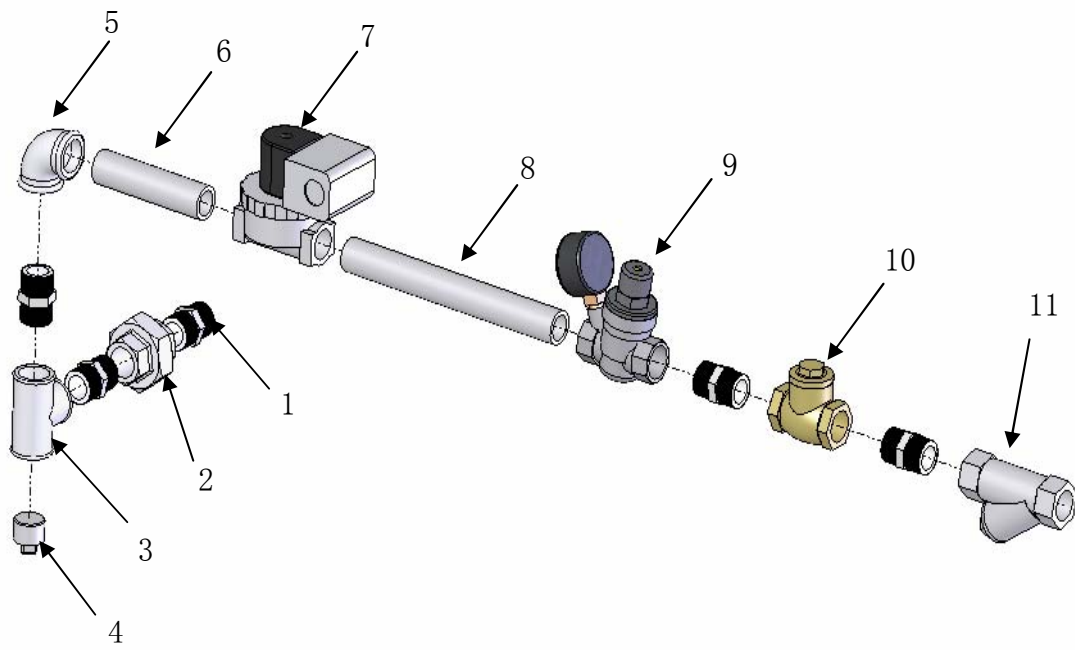
---

**SUPPLEMENTARY MANUAL BB SERIES REPLACEMENT PARTS**

---

**INLET PIPING**

<b>NO.</b>	<b>PART NO.</b>	<b>NAME OF PART</b>	<b>AMT</b>
1	743848	Connector-Male 3/4.....	5
2	743849	Union 3/4.....	1
3	743847	Tee-Joint 3/4.....	1
4	FP-028-19	Pipe Plug 3/4.....	1
5	FP-015-23	Elbow 3/4.....	1
6	FP-041-87	Nipple 3/4.....	1
7	271002-1	Solenoid Valve 3/4(120V).....	1
8	FP-042-12	Nipple 3/4.....	1
9	743859	Reduce Valve 3/4.....	1
10	7152049	Direction Valve 3/4.....	1
11	186922	Line Strainer 3/4.....	1



**Fig.3 INLET PIPING**



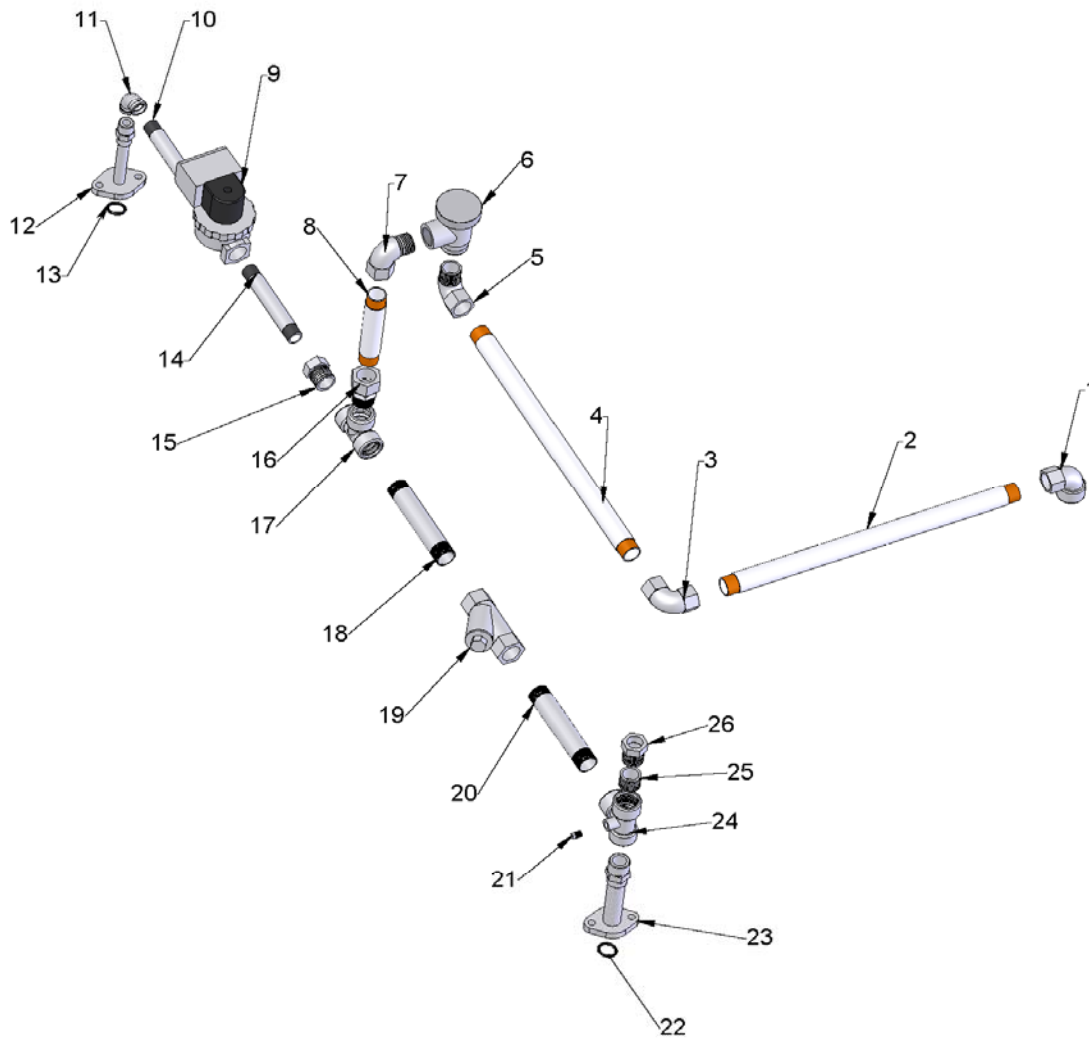
---

**SUPPLEMENTARY MANUAL BB SERIES REPLACEMENT PARTS**

---

**OUTLET PIPING I (C44BB)**

<b>NO.</b>	<b>PART NO.</b>	<b>NAME OF PART</b>	<b>AMT</b>
1	7152017-7	C105 Elbow .....	1
2	7152017-1	Piping (φ22x307) .....	1
3	7152017-6	C103 Elbow.....	1
4	7152017-2	Piping (φ22x335) .....	1
5	7152017-8	C106 Elbow .....	1
6	277112	Vacuum Breaker 3/4.....	1
7	7152017-8	C106 Elbow .....	1
8	7152017-3	Piping (φ22x117) .....	1
9	271006-1	Solenoid Valve 3/8(120V).....	1
10	FP-040-27	Nipple 3/8.....	1
11	FP-015-09	Elbow 3/8.....	1
12	473309	Fill Piping-Outside 3/8.....	1
13	67500-12	O-Ring.....	1
14	FP-076-05	Nipple 3/8.....	1
15	FP-027-16	Nipple 3/4-3/8.....	1
16	7152017-9	C108 Connector.....	1
17	743847	Tee-Joint 3/4.....	1
18	7152017-4	Nipple 3/4.....	1
19	186922	Line Strainer 3/4.....	1
20	7152017-4	Nipple 3/4.....	1
21	FP-028-03	Pipe Plug 1/8.....	1
22	67500-12	O-Ring.....	1
23	473308	Rinse piping 3/4.....	1
24	7152017-5	Tee-Joint 3/4.....	1
25	FP-027-19	Nipple 3/4-1/2.....	1
26	107218	Coupling-Thermometer Bulb.....	1



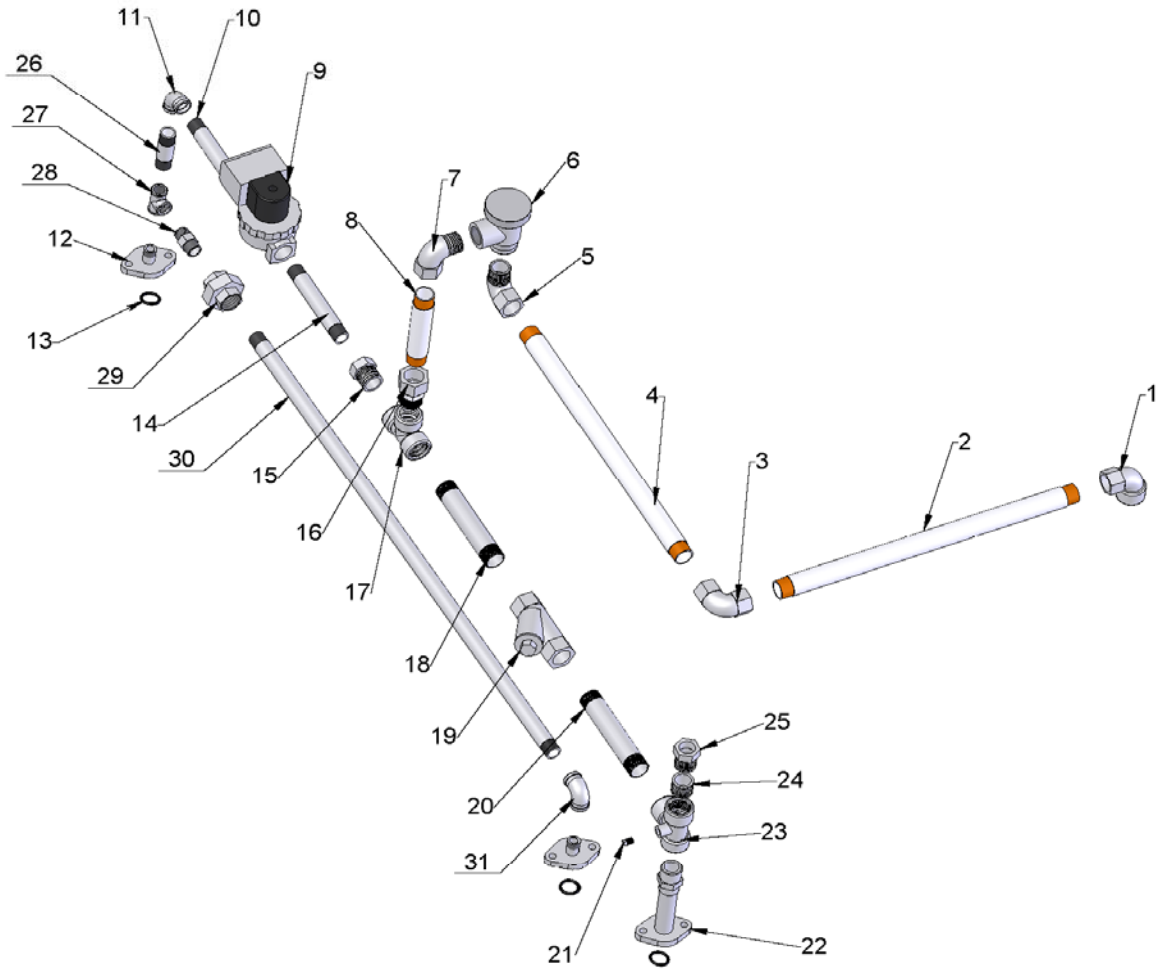
**Fig.4 OUTLET PIPING I (C44BB)**

**SUPPLEMENTARY MANUAL BB SERIES REPLACEMENT PARTS**

---

**OUTLET PIPING I (C64BB)**

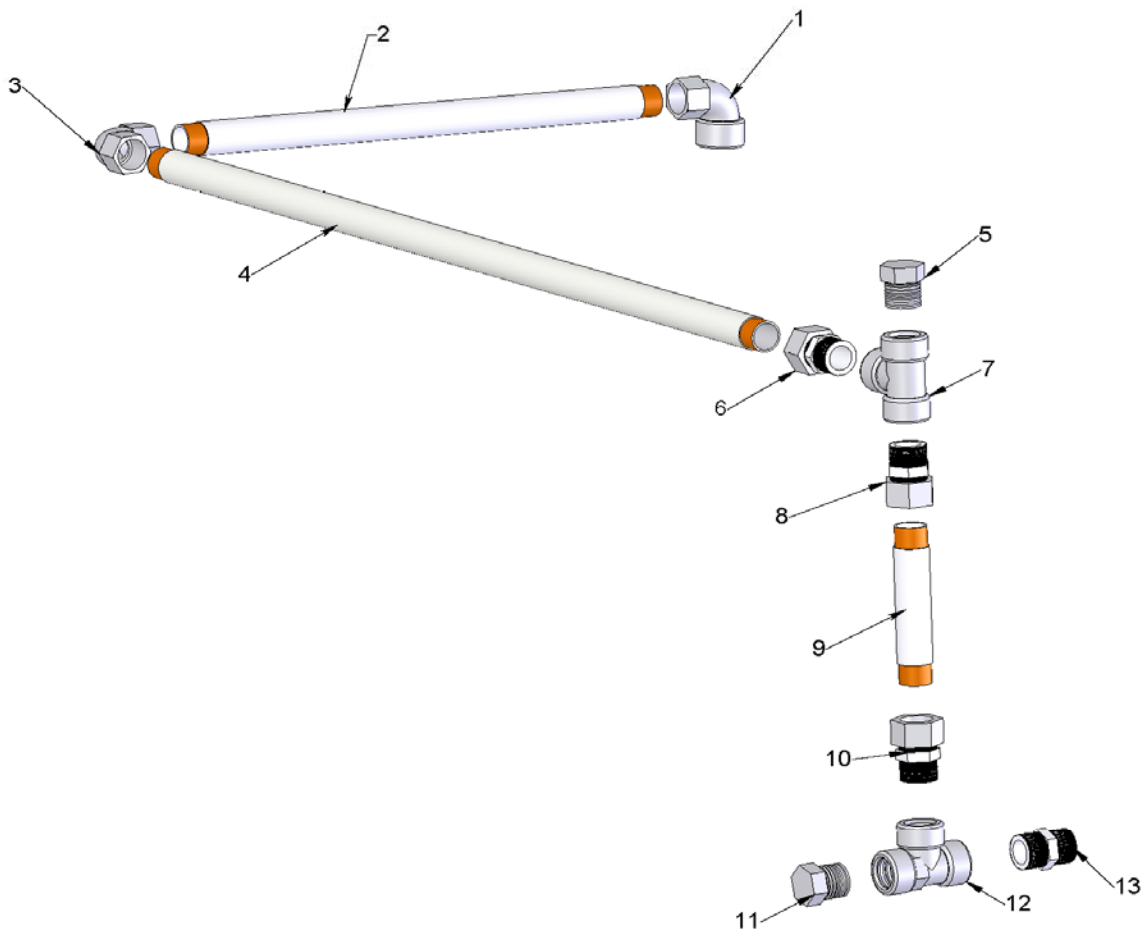
<b>NO.</b>	<b>PART NO.</b>	<b>NAME OF PART</b>	<b>AMT</b>
1	7152017-7	C105 Elbow .....	1
2	7152017-1	Piping (φ22x307) .....	1
3	7152017-6	C103 Elbow.....	1
4	7152017-2	Piping (φ22x335) .....	1
5	7152017-8	C106 Elbow .....	1
6	277112	Vacuum Breaker 3/4.....	1
7	7152017-8	C106 Elbow .....	1
8	7152017-3	Piping (φ22x117) .....	1
9	271006-1	Solenoid Valve 3/8(120V).....	1
10	FP-040-27	Nipple 3/8.....	1
11	FP-015-09	Elbow 3/8.....	1
12	63262-13	Fill Piping-Outside 3/8.....	2
13	67500-12	O-Ring.....	3
14	FP-076-05	Nipple 3/8.....	1
15	FP-027-16	Nipple 3/4-3/8.....	1
16	7152017-9	C108 Connector.....	1
17	743847	Tee-Joint 3/4.....	1
18	7152017-4	Nipple 3/4.....	1
19	186922	Line Strainer 3/4.....	1
20	7152017-4	Nipple 3/4.....	1
21	FP-028-03	Pipe Plug 1/8.....	1
22	473308	Rinse piping 3/4.....	1
23	7152017-5	Tee-Joint 3/4.....	1
24	FP-027-19	Nipple 3/4-1/2.....	1
25	107218	Coupling-Thermometer Bulb.....	1
26	FP-C3-74	Nipple 3/8.....	1
27	FP-ST-01	Tee-Joint 3/8.....	1
28	7135118	Connector-Male 3/8.....	1
29	7135113	Union 3/8.....	1
30	FP-C3-422	Nipple 3/8.....	1
31	FP-015-09	Elbow 3/8.....	1



**Fig.5 OUTLET PIPING I (C64BB)**

**OUTLET PIPING II**

<b>NO.</b>	<b>PART NO.</b>	<b>NAME OF PART</b>	<b>AMT</b>
1	7152017-7	C105 Elbow .....	1
2	7152019-3	Piping (φ22x403) .....	1
3	7152017-6	C103 Elbow .....	1
4	7152019-2	Piping (φ22x812) .....	1
5	FP-028-19	Pipe Plug 3/4.....	1
6	7152017-9	C108 Connector.....	1
7	743847	Tee-Joint 3/4.....	1
8	7152017-9	C108 Connector.....	1
9	7152019-1	Piping (φ22x123) .....	1
10	7152017-9	C108 Connector.....	1
11	FP-028-19	Pipe Plug 3/4.....	1
12	743847	Tee-Joint 3/4.....	1
13	743848	Connector-Male 3/4.....	1



**Fig.6 OUTLET PIPING II**

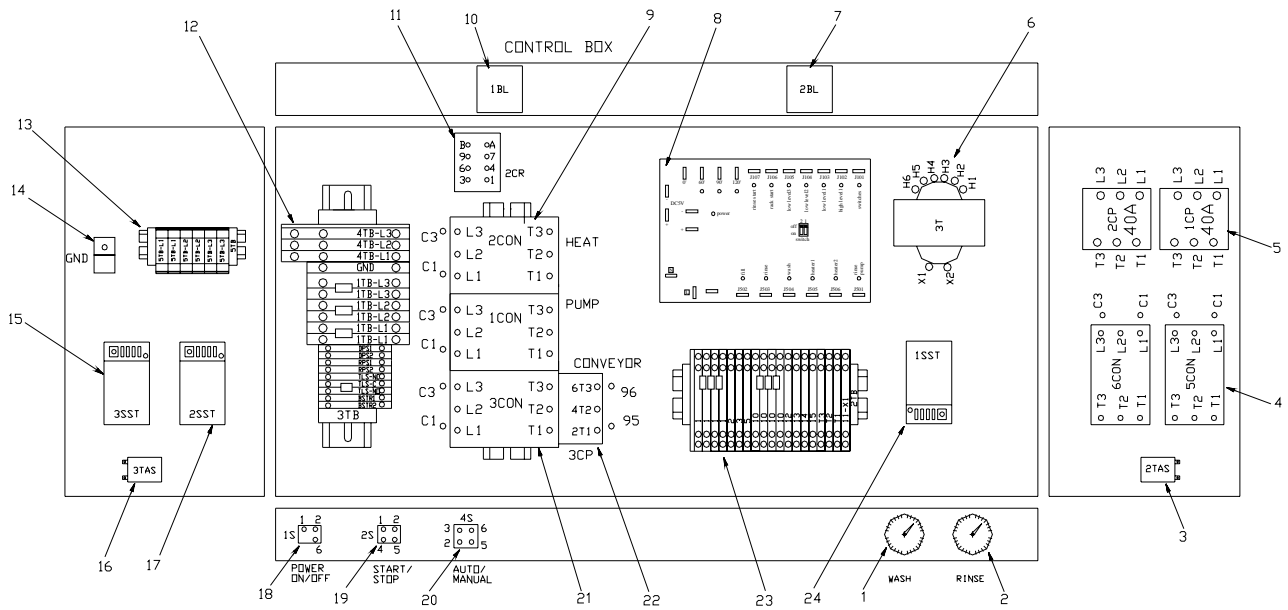
**SUPPLEMENTARY MANUAL BB SERIES REPLACEMENT PARTS**

---

**COMPONENT PANEL(CONTROL BOX OF C44BB)**

<b>NO.</b>	<b>PART NO.</b>	<b>NAME OF PART</b>	<b>AMT</b>
1	437041-4	Thermometer(Wash).....	1
2	437041-3	Thermometer(Rinse).....	1
3	743845	Thermostat 110° C.....	1
4	7152037	Contactor 80Amp. 3 Pole.....	2
5	7152038 <b>294500-46-2</b>	Circuit Breaker 60A/3P.....	2
6	<del>294650-46-2</del>	Transformer.....	1
7	743843	Fan Cooling(120V).....	1
8	7152034	PC Plate.....	1
9	7112011	Contactor 50Amp. 3 Pole.....	1
10	743843	Fan Cooling(120V).....	1
11	87714-7-2	Relay.....	1
12	7152039	Terminal Block.....	1
13	7152033	Terminal Block.....	1
14	118544-2	Lug- Grounding.....	1
15	7151001-2	Thermostat-Solid State.....	1
16	743845	Thermostat 110° C.....	1
17	7151001-2	Thermostat-Solid State.....	1
18	87711-198-1	Switch-Rocker(Power On/Off).....	1
19	87711-228-1	Switch-Rocker(Motor On/Off).....	1
20	87711-241-1	Switch-Rocker(Timer On/Off).....	1
21	7112002	Contactor 25Amp. 3 Pole.....	2
22	7152036	Relay.....	1
23	7152025	Terminal Block.....	1
24	475458-1	Thermostat-Solid State.....	1

# SUPPLEMENTARY MANUAL BB SERIES REPLACEMENT PARTS



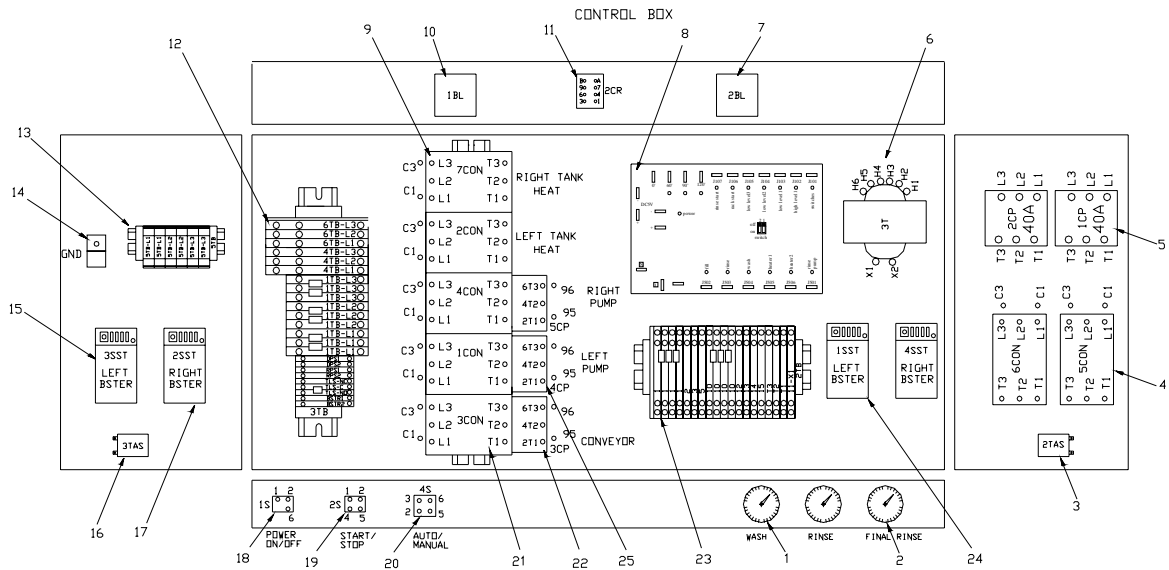
**Fig.7 COMPONENT PANEL(CONTROL BOX OF C44BB)**



**COMPONENT PANEL(CONTROL BOX OF C64BB)**

<b>NO.</b>	<b>PART NO.</b>	<b>NAME OF PART</b>	<b>AMT</b>
1	437041-4	Thermometer(Wash).....	2
2	437041-3	Thermometer(Rinse).....	1
3	743845	Thermostat 110° C.....	1
4	7152037	Contactor 80Amp. 3 Pole.....	2
5	7152038	Circuit Breaker 60A/3P.....	2
6	294650-46-2	Transformer.....	1
7	743843	Fan Cooling(120V).....	1
8	7152034	PC Plate.....	1
9	7112011	Contactor 50Amp. 3 Pole.....	2
10	743843	Fan Cooling(120V).....	1
11	87714-7-2	Relay.....	1
12	7152052	Terminal Block.....	1
13	7152033	Terminal Block.....	1
14	118544-2	Lug- Grounding.....	1
15	7151001-2	Thermostat-Solid State.....	1
16	743845	Thermostat 110° C.....	1
17	7151001-2	Thermostat-Solid State.....	1
18	87711-198-1	Switch-Rocker(Power On/Off).....	1
19	87711-228-1	Switch-Rocker(Motor On/Off).....	1
20	87711-241-1	Switch-Rocker(Timer On/Off).....	1
21	7112002	Contactor 25Amp. 3 Pole.....	3
22	7152036	Relay.....	1
23	7152025	Terminal Block.....	1
24	475458-1	Thermostat-Solid State.....	2
25	7152044	Relay.....	2

# SUPPLEMENTARY MANUAL BB SERIES REPLACEMENT PARTS



**Fig.8 COMPONENT PANEL(CONTROL BOX OF C64BB)**

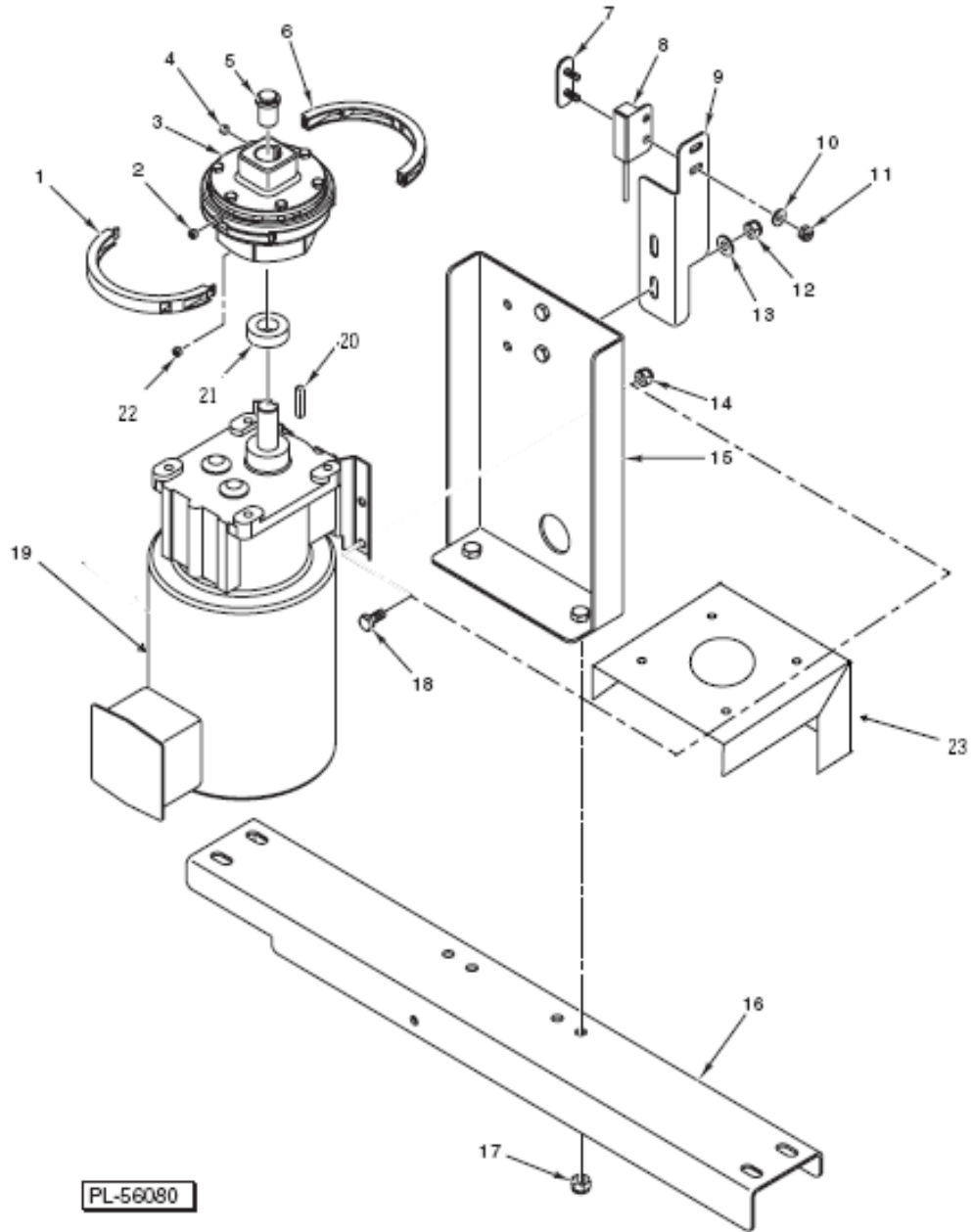
**SUPPLEMENTARY MANUAL BB SERIES REPLACEMENT PARTS**

---

**CONVEYOR DRIVE MOTOR**

<b>NO.</b>	<b>PART NO.</b>	<b>NAME OF PART</b>	<b>AMT</b>
1	892024-00001	Ring-Magnet Assy.(Male) .....	1
2	SC-075-10	Set Screw $\frac{1}{4}$ -20x $\frac{3}{16}$ .....	2
3	749500	Clutch-Detent Assy .....	1
4	SC-075-10	Set Screw $\frac{1}{4}$ -20x $\frac{3}{16}$ .....	2
5	749999	Plug-Clutch Keyway .....	1
6	892024-00002	Ring-Magnet Assy.(FeMale) .....	1
7	7152023	Plate-Sensor Mounting.....	1
8	892533	Sensor-Latching Hall.....	1
9	7152028	Bracket-Sensor.....	1
10	WS-019-20	Washer.....	2
11	NS-031-15	Stop Nut 10-24 Hex.....	2
12	NS-047-82	Stop Nut $\frac{1}{4}$ -20 Hex.....	2
13	WS-017-06	Washer.....	2
14	NS-047-82	Stop Nut $\frac{1}{4}$ -20 Hex.....	4
15	7152022	Support-Motor Mounting.....	1
16	7152029	Support-Motor .....	1
17	NS-036-19	Stop Nut $\frac{5}{16}$ -18 Hex.....	2
18	SC-041-01	Cap Screw $\frac{1}{4}$ -20x $\frac{3}{4}$ Hex Hd.....	4
19	437044-4C	Motor-Conveyor Drive .....	1
20	274231-00057	Key $\frac{3}{16}$ x $\frac{3}{16}$ x $1\frac{1}{4}$ .....	1
21	749829	Bushing-Thrust .....	1
22	SC-075-10	Set Screw $\frac{1}{4}$ -20x $\frac{3}{16}$ .....	2
23	7152027	Support-Motor Mounting.....	1

**SUPPLEMENTARY MANUAL BB SERIES REPLACEMENT PARTS**



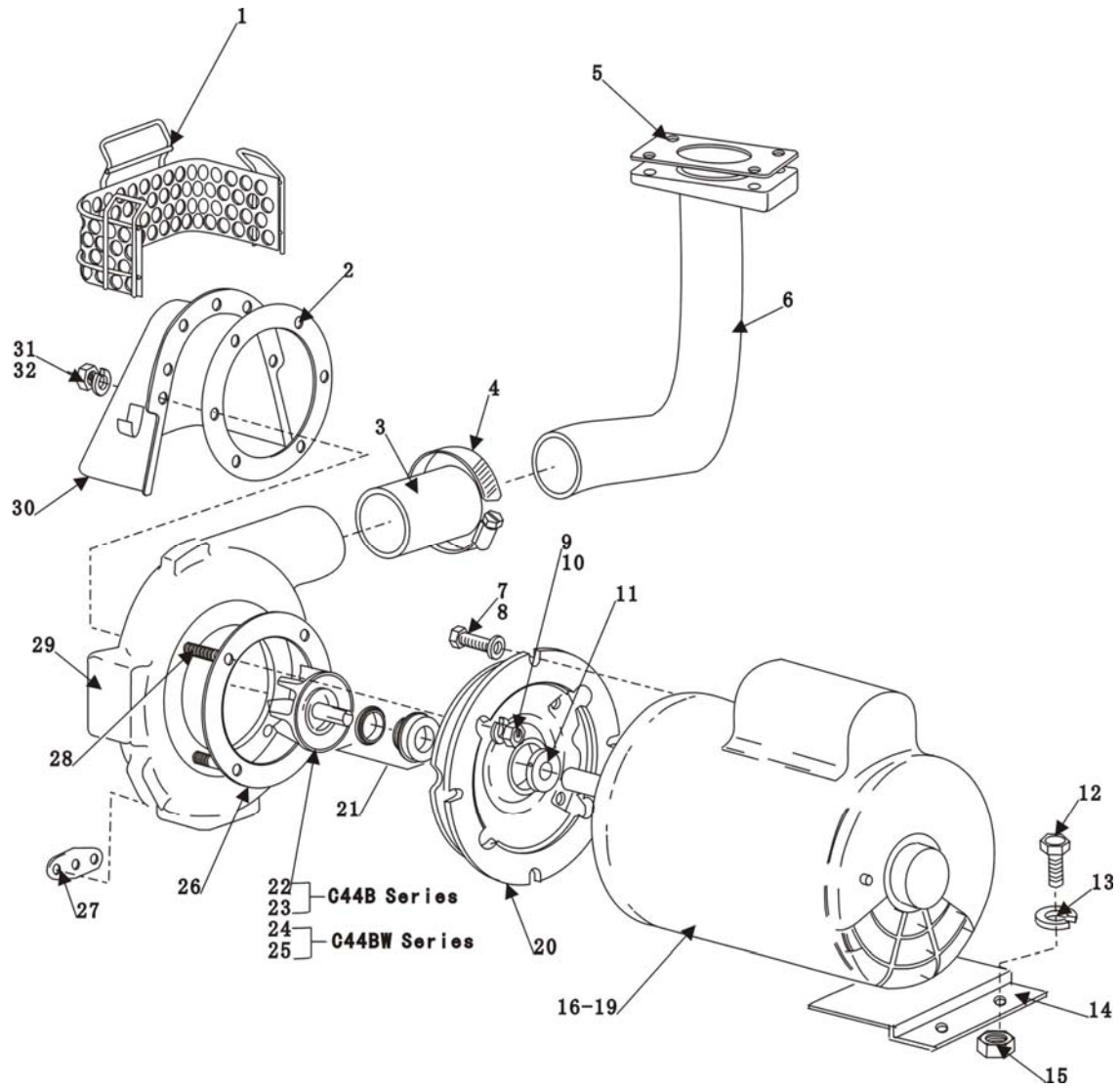
**CONVEYOR DRIVE MOTOR**

**SUPPLEMENTARY MANUAL BB SERIES REPLACEMENT PARTS**

**WASH MOTOR AND PUMP UNIT**

<b>NO.</b>	<b>PART NO.</b>	<b>NAME OF PART</b>	<b>AMT</b>
1	328362	Strainer-Pump .....	1
2	119050	Gasket .....	1
3	328215	Hose-Discharge.....	1
4	542337	Clamp-Hose.....	2
5	270968	Gasket- Washer Pipe.....	1
6	742304	Tube Discharge.....	1
7	SC-041-29	Cap Screw 3/8-16x7/8 Hex Hd.....	4
8	WS-006-44	Washer.....	4
9	WL-006-22	LockWasher 5/16 Light.....	4
10	NS-015-11	Nut 5/16-18 Hex.....	4
11	274227-2	Clamp.....	1
12	SC-041-05	Cap Screw 1/4-16x5/8 Hex Hd.....	2
13	WL-007-15	LockWasher 1/4 .....	2
14	742218	Bracket Motor Support.....	1
15	NS-015-01	Nut 1/4-20 Hex.....	2
16	274230-1C	Motor (1Ph,60Hz)(2HP).....	1
17	274230-2C	Motor (3Ph,60Hz)(2HP).....	1
18	274230-3C	Motor (1Ph,50Hz)(2HP).....	1
19	274230-4C	Motor (3Ph,50Hz)(2HP).....	1
20	274227-3	Adapter.....	1
21	274227-6	Seal-Shaft .....	1
22	274227-7	Impeller&Sleeve(60Hz).....	1
23	274227-10	Impeller&Sleeve(50Hz).....	1
24	274227-12	Impeller&Sleeve(60Hz).....	1
25	274227-7	Impeller&Sleeve(50Hz).....	1
26	274227-4	Gasket .....	1
27	119051	Gasket .....	2
28	274227-5	Stud .....	AR
29	274227-1	Pump Shell.....	1
30	742303	Shroud.....	1
31	WL-006-23	LockWasher 5/16 Medium.....	10
32	NS-015-11	Nut 5/16-18 Hex.....	10
32	270950-1	Pump(1ph,60hz)(2HP)(incls.items 7 thru 11,16,20,21,22,26&29).....	1
	270950-2	Pump(3ph,60hz)(2HP)(incls.items 7 thru 11,17,20,21,22,26,28&29).....	1
	270950-3	Pump(1ph,50hz)(2HP)(incls.items 7 thru 11,18,20,21,22,26,28&29).....	1
	270950-4	Pump(3ph,50hz)(2HP)(incls.items 7 thru 11,19,20,21,22,26,28&29).....	1
	270950-21	Pump(1ph,60hz)(2HP)(incls.items 7 thru 11,16,20,21,22,26,28&29).....	1
	270950-22	Pump(3ph,60hz)(2HP)(incls.items 7 thru 11,17,20,21,22,26,28&29).....	1
	270950-23	Pump(1ph,50hz)(2HP)(incls.items 7 thru 11,18,20,21,22,26,28&29).....	1
	270950-4	Pump(3ph,50hz)(2HP)(incls.items 7 thru 11,19,20,21,22,26,28&29).....	1

# SUPPLEMENTARY MANUAL BB SERIES REPLACEMENT PARTS



**Fig. 10 WASH MOTOR AND PUMP UNIT**