

CCA DISHWASHERS PARTS MANUAL

CCA 洗碗机零部件手册



HOBART

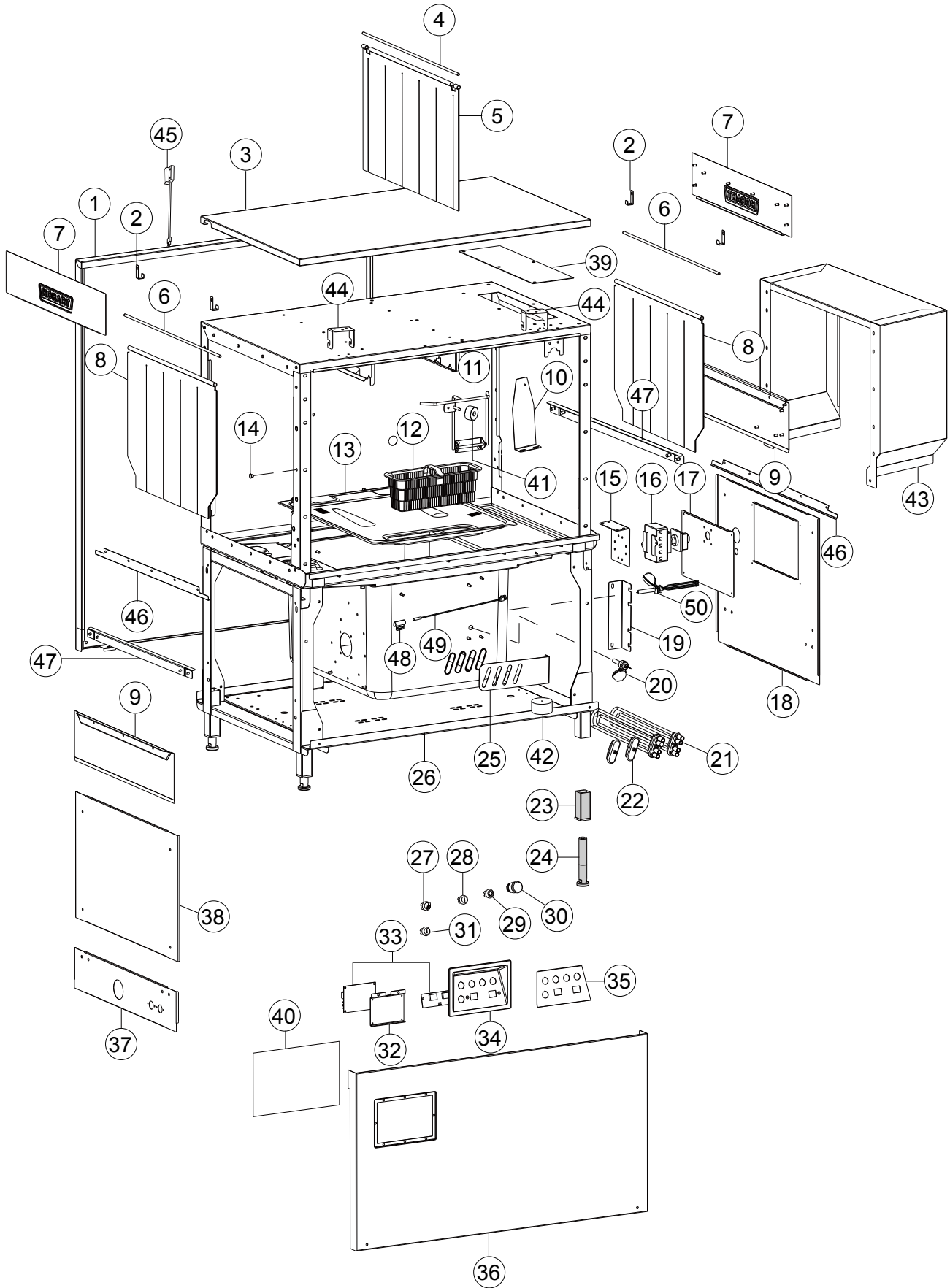
HOBART FOOD EQUIPMENT CO., LTD.
高达食品设备有限公司

Content	Page
Modul AR	4
Drain System.....	8
Transport System	10
Transport System	12
Wash System	14
Rinse System	16
Fill System	18
Entry Hood.....	20
Booster	22
Booster(Steam).....	24
Door and Insulation	26
Auto Timer (only CCA-smart)	28
Heat Recovery(Option)	30
Switch Box(Easytronic)	32
Switch Box(Easytronic-steam heating)	34
Switch Box(Smartronic)	36
Switch Box(Smartronic-Steam heating)	38
Prewash Module	40
Transport System(Prewash)	42
Door and Insulation(Prewash)	44
Control box(Prewash)	46
Dryer Module.....	48
Dryer Heating	50
Control box(dryer)	52
Steam Piping.....	54

目录	页码
1100 模块部装	4
排水系统.....	8
传动系统.....	10
传动系统.....	12
清洗系统.....	14
喷淋系统.....	16
注水系统.....	18
入口风罩焊件.....	20
助热器总成.....	22
助热器总成 (蒸汽型)	24
隔热板组件.....	26
触发开关组件 (仅 CCA-smart)	28
热回收组件 (可选)	30
电器箱装配 (Easytronic)	32
电器箱装配 (Easytronic-蒸汽加热)	34
电器箱装配 (Smartronic)	36
电器箱装配 (Smartronic-蒸汽加热)	38
预洗模块.....	40
传动系统 (预洗)	42
隔热板组件 (预洗)	44
控制盒 (预洗)	46
烘干模块.....	48
烘干加热.....	50
控制盒 (烘干)	52
蒸汽管路.....	54

Modul AR

1100 模块部装



Modul AR

1100 模块部装

Illus. 序号	Parts No. 零件号	Description 名称	
1	02-291317-007	隔热背板	Back Panel
2	7159103-1	门帘挂钩	PoTHOOK
3	7159117-11	隔热顶板焊件 (不带排风)	Ceiling Insulation(without exhaust)
	7159117-12	隔热顶板焊件 (带排风)	Ceiling Insulation(with exhaust)
4	01-245396-006	门帘棍	Curtain Rod
5	01-291315-003	短门帘	Curtain
6	01-245396-007	门帘棍	Curtain Rod
7	01-291497-002	挡板焊件	Baffle Plate
8	01-291315-001	长门帘	Curtain
9	01-291429-001	水箱端板焊件	Table Plate Assy
10	7159133-2	磁开关支架	Holder Read Switch
11	7159120-10	开关焊件 L-R	Magnet Braket Assy L-R
	7159120-11	开关焊件 R-L	Magnet Braket Assy R-L
12	01-245170-010	过滤篮	Screen Basket Compl.2-Parts
13	01-245047-006	过滤筛网 L-R	Tank Cover Fillter L-R
	01-245047-005	过滤筛网 R-L	Tank Cover Fillter R-L
14	7159135-1	孔堵塞	Plug
15	7159108-2	开关支架	Holder Main Switth
16	02-785574-006	隔离开关	Main Switch
17	02-291427-001	电源开关护板	Plate Main Switch
18	01-291419-001	出口护板 L-R	Exit Cover L-R
	01-291419-002	出口护板 R-L	Exit Cover R-L
	01-291419-004	出口护板 L-R(仅蒸汽加热)	Exit Cover L-R (Only for steam heating)
	01-291419-005	出口护板 R-L(仅蒸汽加热)	Exit Cover R-L (Only for steam heating)
19	7159114-1	电器箱支架	Control Box Braket
20	01-245621-002	浮子开关 (CCA-smartronic)	Mit Temperature Hler NTC(CCA-smartronic)
	02-245621-003	浮子开关 (CCA-easytronic)	Mit Temperature Hler NTC(CCA-easytronic)
21	02-324637-001	电热管 220V 6kW	Heating Element 220V 6kW
	02-324637-002	电热管 220V 4kW	Heating Element 220V 4kW
	02-324637-003	电热管 200V 6kW	Heating Element 200V 6kW
	02-324637-004	电热管 200V 4kW	Heating Element 200V 4kW
	02-324637-005	电热管 220V 5kW	Heating Element 220V 5kW
22	02-774808-001	堵头	Blind Plug
23	00-325008-001	地脚座	Kit Asjustable Foot Fin
24	00-325007-001	地脚	Foot
25	02-245372-002	电热管支架	Heating Element Braket
26	01-291850-001	1100 模块框架合件 L-R	Wash Modul AR 1100 L-R
	01-291850-002	1100 模块框架合件 R-L	Wash Modul AR 1100 R-L
27	02-887015-071	排水 / 注水按钮	Drain/Fill Button
28	02-887015-033	启动按钮	Start Button
29	02-887015-021	停止按钮	Stop Button
30	02-887015-025	急停按钮	Emergency Button
31	02-887015-045	电源指示灯	Power LED
32	7159122-1	温度控制板支架	Braket
33	7159126-1	温度控制器组件	Thermostat Assy
	7159126-10	温度显示屏 - 部件	Temperature Screen-Part
	7159126-11	温度控制板 (AC) - 部件	Control Board (AC)-Part
	7159126-13	温度探头 - 部件	Temperature Probe-Part
	7159126-14(15/16/17/18)	感温线 - 部件	Temperature Sense Line-Part
34	7159109-1	控制面板	Keyboard
35	7159109-2	控制面板贴面	Keyboard Foil
36	7159104-4	前护板 L-R	Front Panel L-R
	7159104-5	前护板 R-L	Front Panel R-L
	7159104-3	前护板 (Smart)	Front Panel(Smart)
37	01-291408-001	入口下护板 L-R	Entry Cover L-R

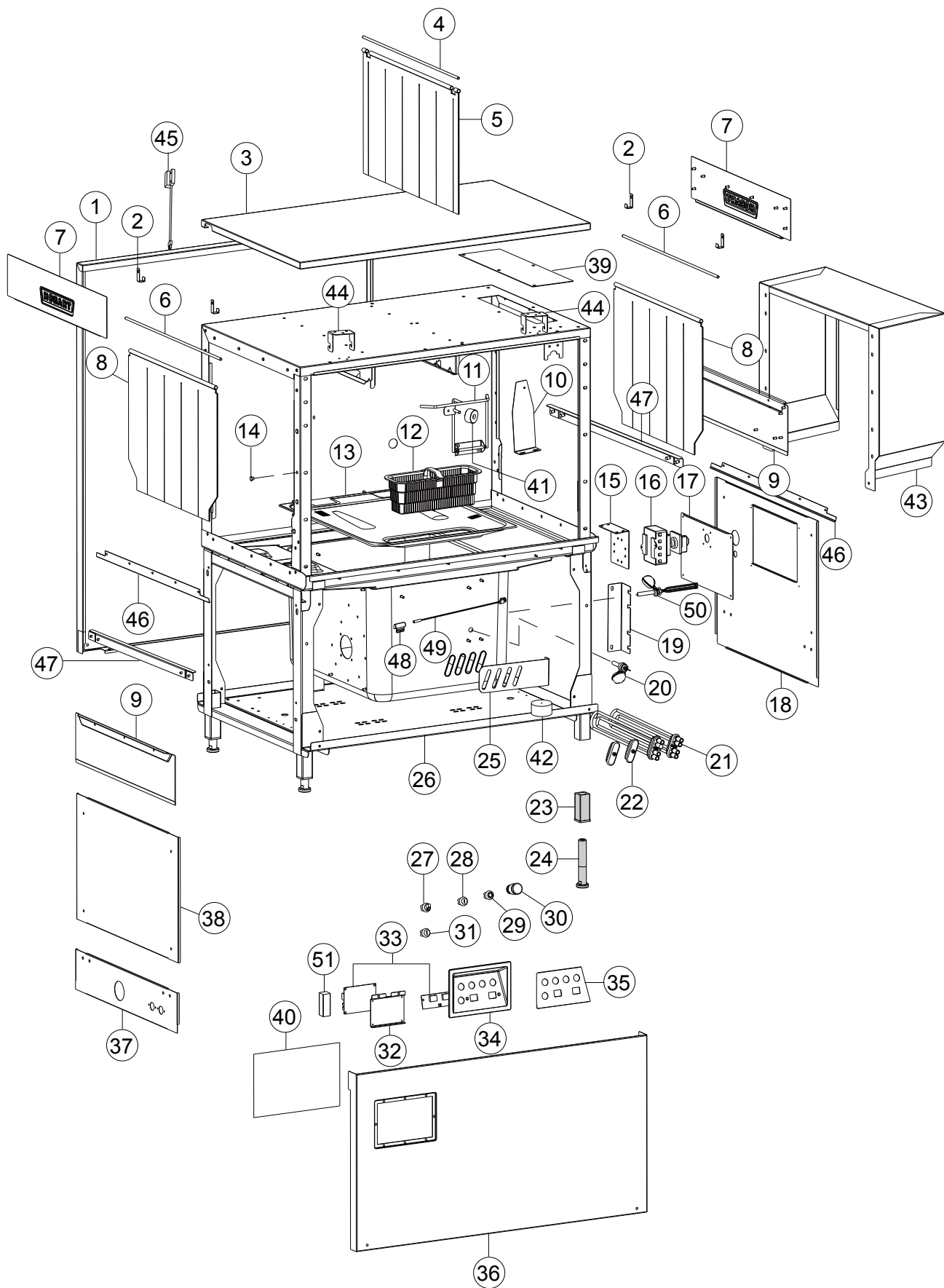
Modul AR

1100 模块部装

Illus.	Parts No.	Description	
序号	零件号	名称	
	01-291408-002	入口下护板 R-L	Entry Cover R-L
38	01-291409-001	入口护板	Entry Cover
39	7159123-1	盖板	Cover
40	7159125-24	挡水帘	Breakwater
41	00-774714-001	门磁铁	Magnet
42	898282-001	变压器 (仅 200V 机型)	Transform(only for voltage of 200V)
43	01-291404-001	出口风罩焊件 (仅带热回收)	Exit Hood(only for the type with heat recovery)
44	7159137-1	挂钩焊件	Pothook
45	229517-002	磁开关	Magnetic Switch
46	00-896394-001	加强板	Reinforce Panel
47	01-291432-001	连接板焊件	Cross Brace
48	00-883838-001	磁开关压板	Switch Holder
49	01-240288-001	磁开关总成	Magenetic Switch
50	02-245621-003	浮子开关 (CCA-easytronic)	Mit Temperature Hler NTC(CCA-easytronic)

Modul AR

1100 模块部装



Modul AR

1100 模块部装

Illus. 序号	Parts No. 零件号	Description 名称	
1	02-291317-007	隔热背板	Back Panel
2	7159103-1	门帘挂钩	Pothead
3	7159117-11	隔热顶板焊件 (不带排风)	Ceiling Insulation(without exhaust)
	7159117-12	隔热顶板焊件 (带排风)	Ceiling Insulation(with exhaust)
4	01-245396-006	门帘棍	Curtain Rod
5	01-291315-003	短门帘	Curtain
6	01-245396-007	门帘棍	Curtain Rod
7	01-291497-002	挡板焊件	Baffle Plate
8	01-291315-001	长门帘	Curtain
9	01-291429-001	水箱端板焊件	Table Plate Assy
10	7159133-2	磁开关支架	Holder Read Switch
11	7159120-10	开关焊件 L-R	Magnet Braket Assy L-R
	7159120-11	开关焊件 R-L	Magnet Braket Assy R-L
12	01-245170-010	过滤篮	Screen Basket Compl.2-Parts
13	01-245047-006	过滤筛网 L-R	Tank Cover Filter L-R
	01-245047-005	过滤筛网 R-L	Tank Cover Filter R-L
14	7159135-1	孔堵塞	Plug
15	7159108-2	开关支架	Holder Main Switth
16	02-785574-006	隔离开关	Main Switch
17	02-291427-001	电源开关护板	Plate Main Switch
18	01-291419-001	出口护板 L-R	Exit Cover L-R
	01-291419-002	出口护板 R-L	Exit Cover R-L
	01-291419-004	出口护板 L-R (仅蒸汽加热)	Exit Cover L-R (Only for steam heating)
	01-291419-005	出口护板 R-L (仅蒸汽加热)	Exit Cover R-L (Only for steam heating)
19	7159114-1	电器箱支架	Control Box Braket
20	01-245621-002	浮子开关 (CCA-smartronic)	Mit Temperature Hler NTC(CCA-smartronic)
	02-245621-003	浮子开关 (CCA-easytronic)	Mit Temperature Hler NTC(CCA-easytronic)
21	02-324637-001	电热管 220V 6kW	Heating Element 220V 6kW
	02-324637-002	电热管 220V 4kW	Heating Element 220V 4kW
	02-324637-003	电热管 200V 6kW	Heating Element 200V 6kW
	02-324637-004	电热管 200V 4kW	Heating Element 200V 4kW
	02-324637-005	电热管 220V 5kW	Heating Element 220V 5kW
22	02-774808-001	堵头	Blind Plug
23	00-325008-001	地脚座	Kit Asjustable Foot Fin
24	00-325007-001	地脚	Foot
25	02-245372-002	电热管支架	Heating Element Braket
26	01-291850-001	1100 模块框架合件 L-R	Wash Modul AR 1100 L-R
	01-291850-002	1100 模块框架合件 R-L	Wash Modul AR 1100 R-L
27	02-887015-071	排水 / 注水按钮	Drain/Fill Button
28	02-887015-033	启动按钮	Start Button
29	02-887015-021	停止按钮	Stop Button
30	02-887015-025	急停按钮	Emergency Button
31	02-887015-045	电源指示灯	Power LED
32	7159122-1	温度控制板支架	Braket
33	7159126-1	温度控制器组件	Thermostat Assy
	7159126-10	温度显示屏 - 部件	Temperature Screen-Part
	7159126-11	温度控制板 (AC) - 部件	Control Board (AC)-Part
	7159126-13	温度探头 - 部件	Temperature Probe-Part
	7159126-14(15/16/17/18)	感温线 - 部件	Temperature Sense Line-Part
34	7159109-1	控制面板	Keyboard
35	7159109-2	控制面板贴面	Keyboard Foil
36	7159104-4	前护板 L-R	Front Panel L-R
	7159104-5	前护板 R-L	Front Panel R-L
	7159104-3	前护板 (Smart)	Front Panel(Smart)
37	01-291408-001	入口下护板 L-R	Entry Cover L-R

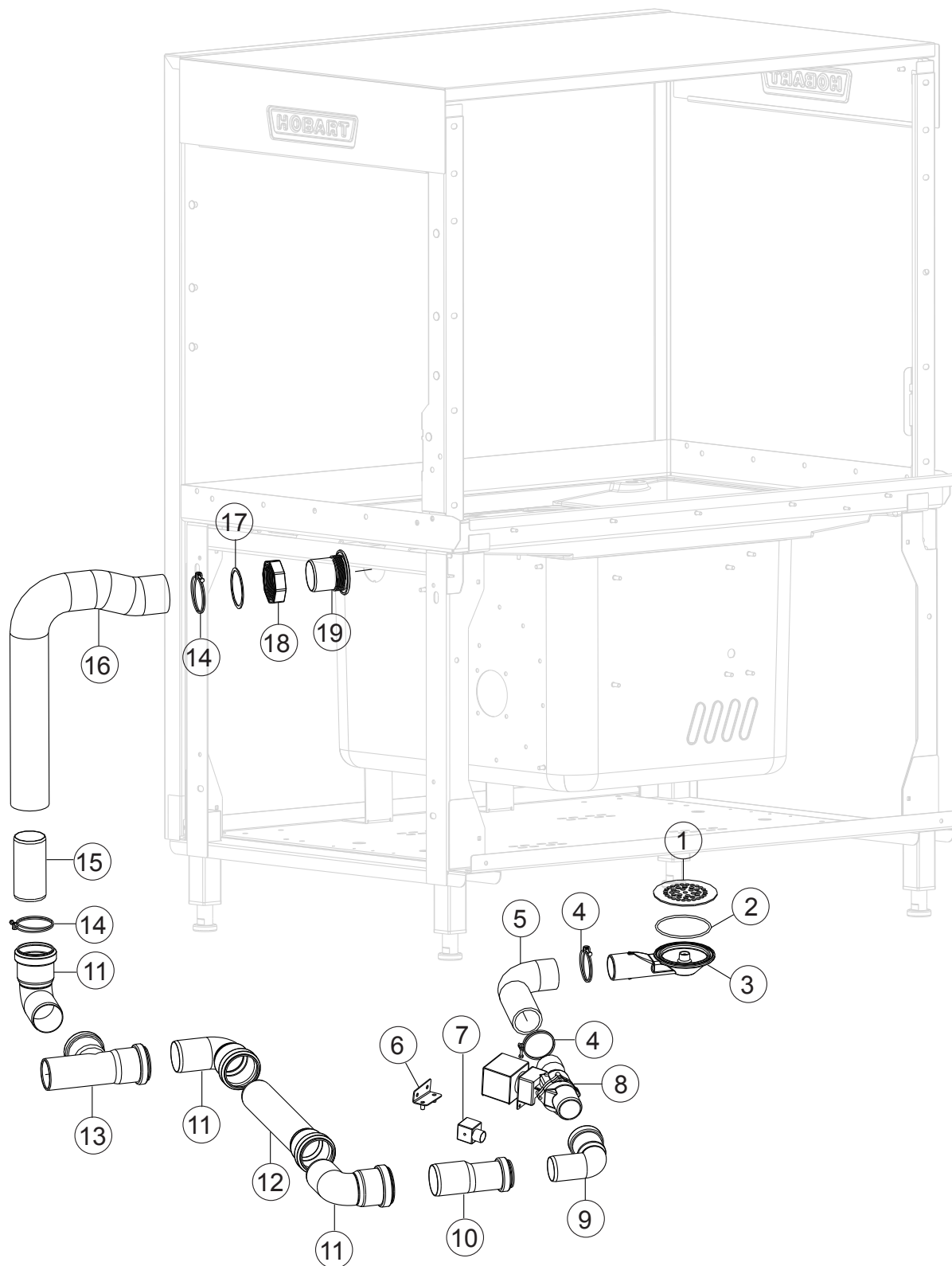
Modul AR

1100 模块部装

Illus.	Parts No.	Description	
序号	零件号	名称	
	01-291408-002	入口下护板 R-L	Entry Cover R-L
38	01-291409-001	入口护板	Entry Cover
39	7159123-1	盖板	Cover
40	7159125-24	挡水帘	Breakwater
41	00-774714-001	门磁铁	Magnet
42	898282-001	变压器 (仅 200V 机型)	Transform(only for voltage of 200V)
43	01-291404-001	出口风罩焊件 (仅带热回收)	Exit Hood(only for the type with heat recovery)
44	7159137-1	挂钩焊件	Pothook
45	229517-002	磁开关	Magnetic Switch
46	00-896394-001	加强板	Reinforce Panel
47	01-291432-001	连接板焊件	Cross Brace
48	00-883838-001	磁开关压板	Switch Holder
49	01-240288-001	磁开关总成	Magenetic Switch
50	02-245621-003	浮子开关 (CCA-easytronic)	Mit Temperature Hler NTC(CCA-easytronic)
51	7159175-1	时间继电器	Multi-function Delay

Drain System

排水系统

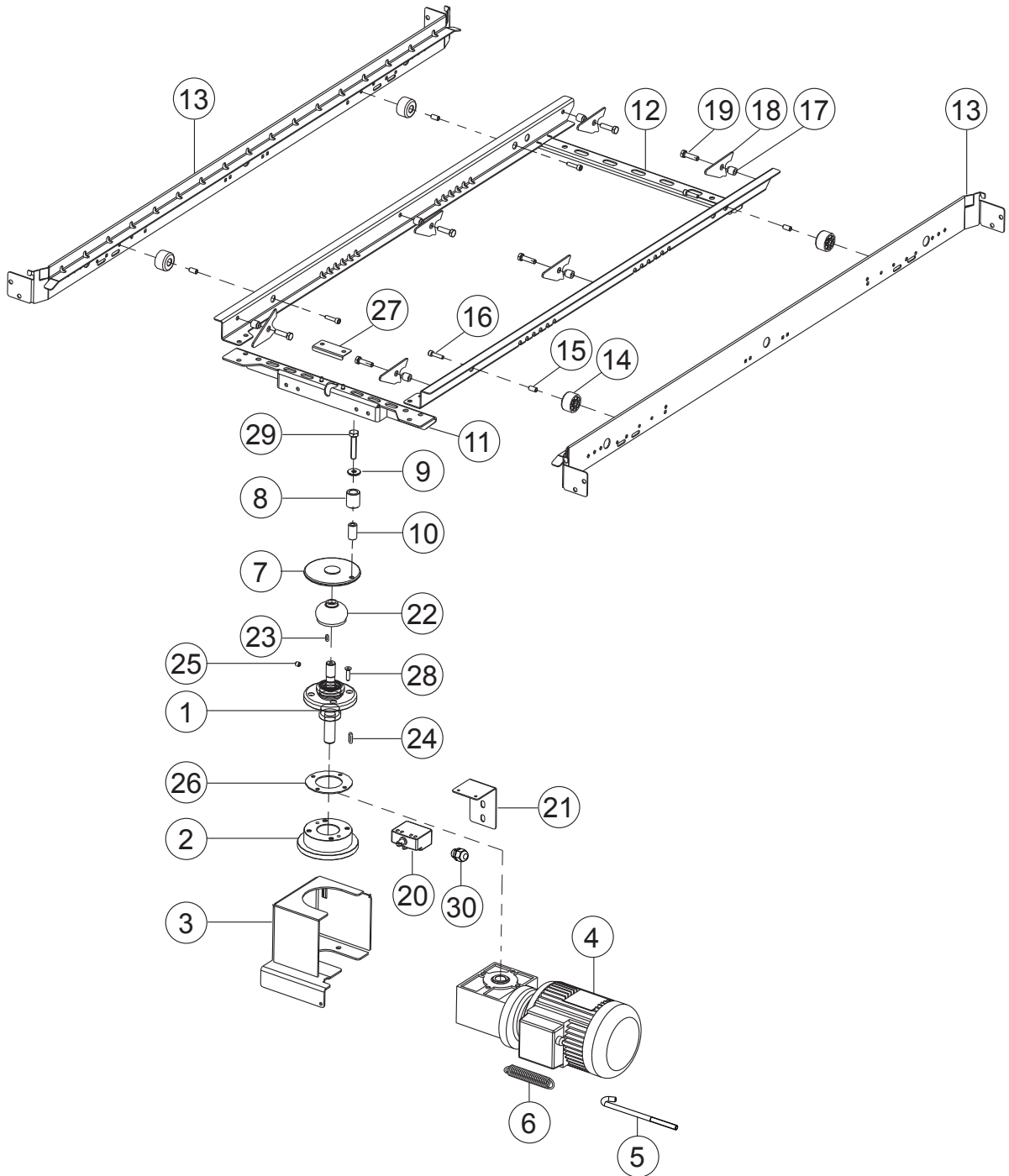


Drain System

排水系统

Illus.	Parts No.	Description	
序号	零件号	名称	
1	01-245107-001	过滤网	Coarse Screen Wash Tank
2	02-245340-004	O 形圈 80X3.55	O Ring
3	01-245109-001	排水阀座组件	Drain Piece
4	00-323945-053	喉箍 53	Hose Clamp 53
5	01-291527-001	排水胶管	Hose
6	01-291684-001	排水阀支板焊件	Valve Holder Assy
7	02-228905-001	接头	Connect Jack
8	00-774683-001	排水电磁阀	Drain Valve
9	00-230080-002	弯头	Elbow
10	00-325708-001	短接管	Connector
11	00-230080-001	弯头	Elbow
12	00-229679-006	直管	Tube
13	00-230079-001	三通	Tee
14	00-323945-064	喉箍 64	Hose Clamp 64
15	00-325737-007	短接管	Connector
16	01-291519-001	排水胶管	Hose
17	01-245460-001	密封垫	Seal OverFlow
18	01-245165-001	溢流管锁母	Nut OverFlow
19	01-245112-001	溢流管	OverFlow Pipe

Transport System 传动系统



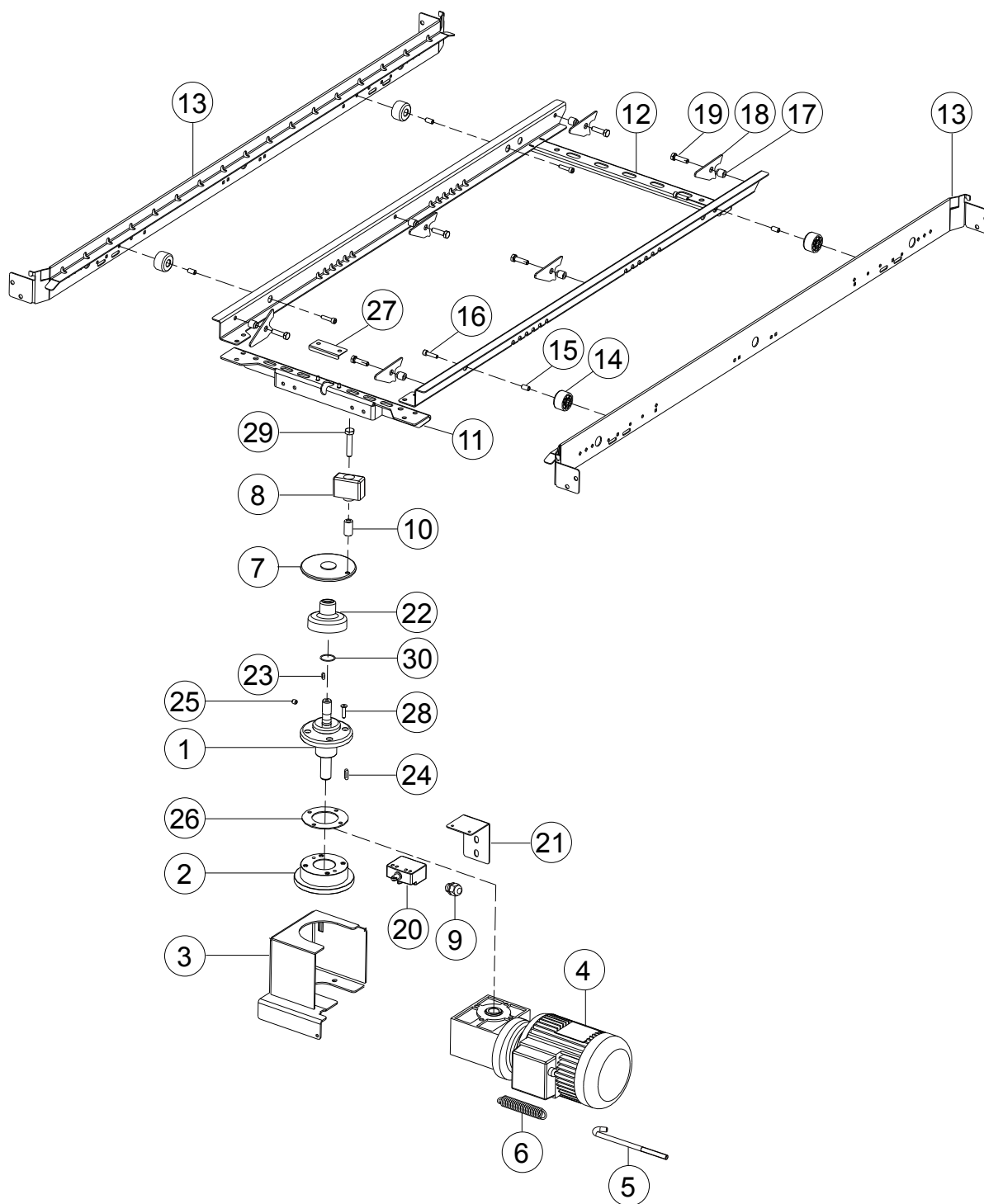
Transport System

传动系统

Illus. 序号	Parts No. 零件号	Description 名称	
1	02-781064-004	电机输出轴组件 (双速)	Flange Bearing Assy
	00-781064-004	电机输出轴组件 (单速)	Flange Bearing Assy(single)
2	01-291529-001	法兰组件	Motor Bearing(two-speed)
3	7159102-8	传动电机支架焊件 (单速) L-R	Motor Holder Assy(single) L-R
	7159102-4	传动电机支架焊件 (单速) R-L	Motor Holder Assy(single) R-L
	7159102-12	传动电机支架焊件 (双速) L-R	Motor Holder Assy(two-speed) L-R
	7159102-16	传动电机支架焊件 (双速) R-L	Motor Holder Assy(two-speed) R-L
4	02-291291-001	减速机 (单速) 220v/380v/50Hz/CCA	Drive Motor 220v/380v/50Hz/CCA
	02-291291-002	减速机 (单速) 220v/380v/50Hz/CC(S)A	Drive Motor 220v/380v/50Hz/CC(S)A
	02-291291-003	减速机 (双速) 220v/380v/50Hz/CCA	Drive Motor 220v/380v/50Hz/CCA
	02-291291-004	减速机 (双速) 220v/380v/50Hz/CNA	Drive Motor 220v/380v/50Hz/CNA
	02-291291-005	减速机 (单速) 220v/380v/50Hz/CN(S)A	Drive Motor 220v/380v/50Hz/CN(S)A
	02-291291-006	减速机 (双速) 220v/380v/60Hz/CCA	Drive Motor 220v/380v/60Hz/CCA
	02-291291-007	减速机 (双速) 220v/380v/60Hz/CNA	Drive Motor 220v/380v/60Hz/CNA
	02-291291-008	减速机 (双速) 200v/50Hz/CCA	Drive Motor 200v/50Hz/CCA
	02-291291-009	减速机 (双速) 200v/50Hz/CNA	Drive Motor 200v/50Hz/CNA
5	02-602920-000	拉杆	Tension Rod
6	00-774828-002	过载拉簧	Overload Tension Spring
7	00-781117-001	传动盘	Crank Plate
8	00-154789-000	传动滚轮	Drive Wheel
9	00-781490-001	垫圈	Washer
10	00-154795-000	滚轮轴套	Sleeve-Crank
11	01-291772-001	传动横梁焊件	Transport Bar
12	01-291375-007	碗架焊件	Transport Frame Assy
13	02-291368-007	导轨	Tray Guide
14	01-291534-001	碗架滚轮	Sliding Roll
15	01-291535-001	滚轮轴套	Distance Piece
16	00-603026-000	内六角螺栓 M6×25	Inner Hexagon Screw M6×25
17	01-243284-001	套管	Sleeve-Roller
18	01-291371-001	拨爪	Dog
19	00-602579-000	六角螺栓 M8×30	Hexagon Screw M8×30
20	02-785286-001	过载开关	Overload Switch
21	01-291387-001	过载开关支座	Holding Plate
22	00-154791-000	胶皮碗	Waterproof Cover
23	00-600681-000	平键	Parallel Key
24	02-600683-000	平键 (双速)	Parallel Key(two-speed)
	00-600683-000	平键 (单速)	Parallel Key(single)
25	00-600682-000	顶丝 M8×8	Set Screw M8×8
26	00-781007-001	密封垫	Sealing
27	00-868312-001	盖板	Plate-Cover
28	00-609794-000	沉头螺钉 M6×25	Screw M6×25
29	SCH-M8-55	六角螺栓 M8×55	Hexagon Screw M8×55
30	FE-022-85	防水接头	Waterprof Connector

Transport System

传动系统



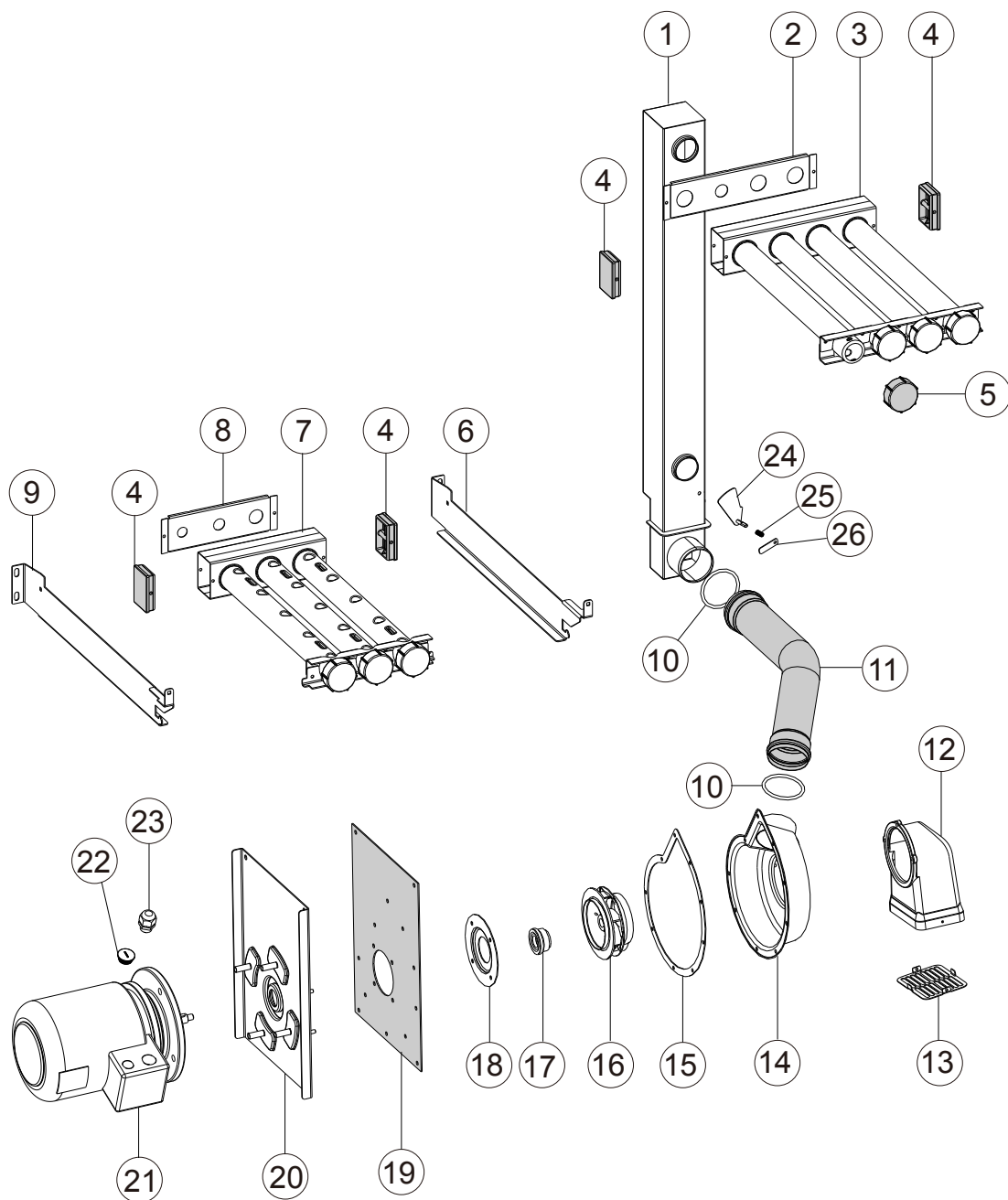
Transport System

传动系统

Illus. 序号	Parts No. 零件号	Description 名称	
1	02-781064-004	电机输出轴组件 (双速)	Flange Bearing Assy
	00-781064-004	电机输出轴组件 (单速)	Flange Bearing Assy(single)
2	01-291529-001	法兰组件	Motor Bearing(two-speed)
3	7159102-8	传动电机支架焊件 (单速) L-R	Motor Holder Assy(single) L-R
	7159102-4	传动电机支架焊件 (单速) R-L	Motor Holder Assy(single) R-L
	7159102-12	传动电机支架焊件 (双速) L-R	Motor Holder Assy(two-speed) L-R
	7159102-16	传动电机支架焊件 (双速) R-L	Motor Holder Assy(two-speed) R-L
4	02-291291-001	减速机 (单速) 220v/380v/50Hz/CCA	Drive Motor 220v/380v/50Hz/CCA
	02-291291-002	减速机 (单速) 220v/380v/50Hz/CC(S)A	Drive Motor 220v/380v/50Hz/CC(S)A
	02-291291-003	减速机 (双速) 220v/380v/50Hz/CCA	Drive Motor 220v/380v/50Hz/CCA
	02-291291-004	减速机 (双速) 220v/380v/50Hz/CNA	Drive Motor 220v/380v/50Hz/CNA
	02-291291-005	减速机 (单速) 220v/380v/50Hz/CN(S)A	Drive Motor 220v/380v/50Hz/CN(S)A
	02-291291-006	减速机 (双速) 220v/380v/60Hz/CCA	Drive Motor 220v/380v/60Hz/CCA
	02-291291-007	减速机 (双速) 220v/380v/60Hz/CNA	Drive Motor 220v/380v/60Hz/CNA
	02-291291-008	减速机 (双速) 200v/50Hz/CCA	Drive Motor 200v/50Hz/CCA
	02-291291-009	减速机 (双速) 200v/50Hz/CNA	Drive Motor 200v/50Hz/CNA
5	02-602920-000	拉杆	Tension Rod
6	00-774828-002	过载拉簧	Overload Tension Spring
7	00-781117-001	传动盘	Crank Plate
8	01-296150-001	传动滑块	Drive Slide
9	PE-022-85	防水接头	Waterproof Connector
10	00-154795-000	滚轮轴套	Sleeve-Crank
11	01-291772-001	传动横梁焊件	Transport Bar
12	01-291375-007	碗架焊件	Transport Frame Assy
13	02-291368-007	导轨	Tray Guide
14	01-291534-001	碗架滚轮	Sliding Roll
15	01-291535-001	滚轮轴套	Distance Piece
16	00-603026-000	内六角螺栓 M6×25	Inner Hexagon Screw M6×25
17	01-243284-001	套管	Sleeve-Roller
18	01-291371-001	拨爪	Dog
19	00-602579-000	六角螺栓 M8×30	Hexagon Screw M8×30
20	02-785286-001	过载开关	Overload Switch
21	01-291387-001	过载开关支座	Holding Plate
22	01-296445-001	保护罩	Waterproof Cover
23	00-600681-000	平键	Parallel Key
24	02-600683-000	平键 (双速)	Parallel Key(two-speed)
	00-600683-000	平键 (单速)	Parallel Key(single)
25	00-600682-000	顶丝 M8×8	Set Screw M8×8
26	00-781007-001	密封垫	Sealing
27	00-868312-001	盖板	Plate-Cover
28	00-609794-000	沉头螺钉 M6×25	Screw M6×25
29	SCH-M8-55	六角螺栓 M8×55	Hexagon Screw M8×55
30	00-276903-007	O 型圈	O Ring

Wash System

清洗系统

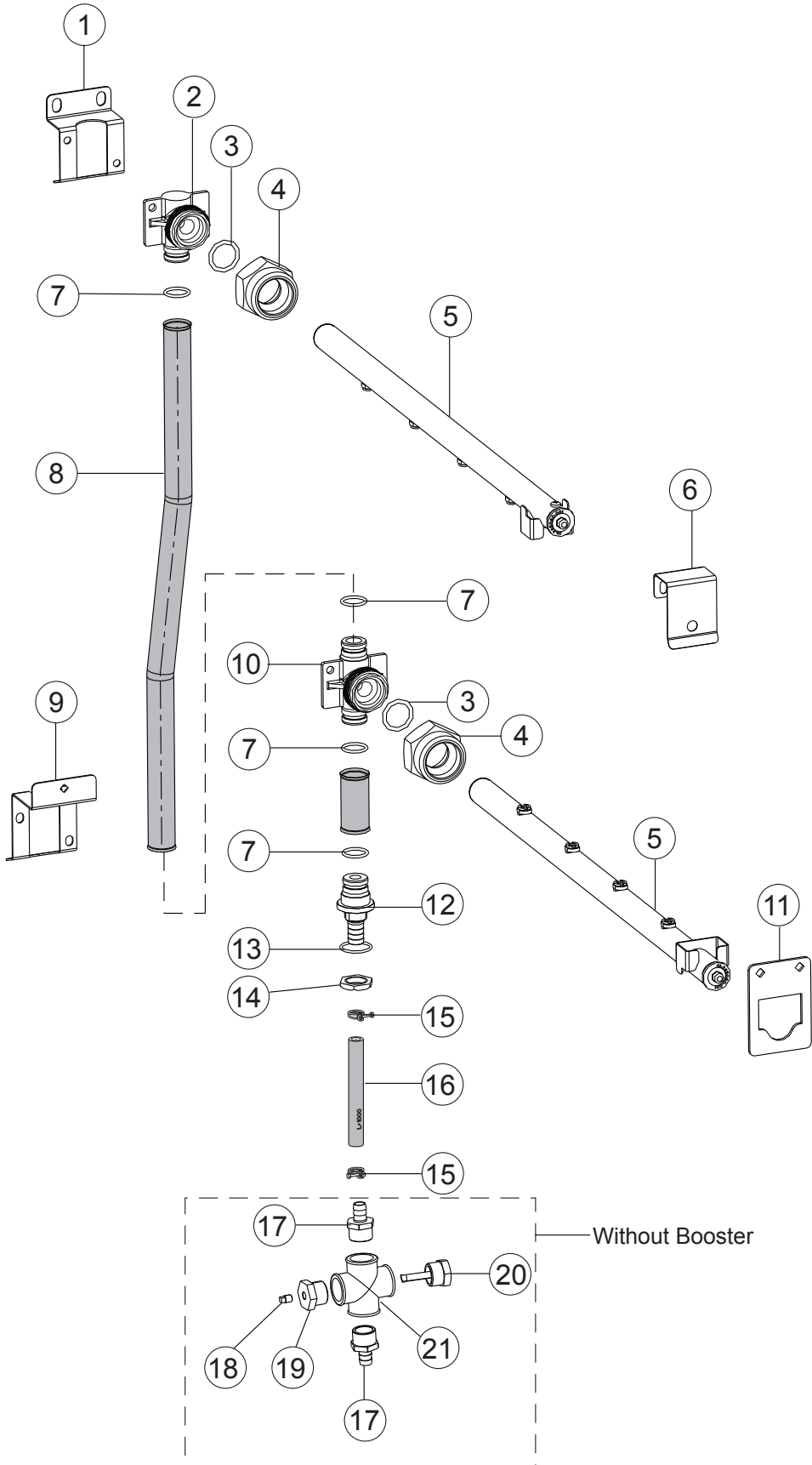


Wash System

清洗系统

Illus. 序号	Parts No. 零件号	Description 名称	
1	7159138-9	清洗立管	Manifold
2	7159111-1	节流片	Throttle
3	01-291302-009	上洗臂总成 L-R	Wash Arm Assy L-R
	01-291302-011	上洗臂总成 R-L	Wash Arm Assy R-L
4	01-245086-001	主洗臂管堵板	End Cap
5	01-245084-002	洗臂堵	Plug-Wash Pipe
6	01-291358-001	下洗臂右连接板	Wash Arm Guide
7	01-291302-010	下洗臂总成 L-R	Wash Arm Assy L-R
	01-291302-012	下洗臂总成 R-L	Wash Arm Assy R-L
8	7159111-2	节流片	Throttle
9	01-291358-002	下洗臂左连接板	Wash Arm Guide
10	02-245340-003	O 型圈 63×5.3	O-Ring 63×5.3
11	01-245277-001	清洗泵出水管	Pressure Pipe
12	01-245713-001	泵头入口罩	Intake Part
13	01-245377-002	过滤罩	Intake Strainer
14	01-245135-004	泵壳 L-R	Pump Housing Compl L-R
	01-245135-005	泵壳 R-L	Pump Housing Compl R-L
15	01-245459-001	泵壳密封圈	Pump Shell Sealing
16	01-245162-003	叶轮 L-R	Impeller L-R
	01-245088-003	叶轮 R-L	Impeller R-L
17	01-245033-002	轴封	Seal
18	01-245379-001	泵壳法兰片	Pump Shell Flange
19	01-245386-002	密封垫	Seal Waschpump
20	01-245835-003	泵壳连接板焊件 L-R	Bracket Plate Assy L-R
	01-245835-004	泵壳连接板焊件 R-L	Bracket Plate Assy R-L
21	01-245176-013	清洗泵电机 220-240V/380-415V/50Hz/3Φ	Motor-Wash Pump 220-240V/380-415V/50Hz/3Φ
	01-245176-016	清洗泵电机 200V/50Hz/3Φ 200-220V/346-380V/60Hz/3Φ	Motor-Wash Pump 200V/50Hz/3Φ 200-220V/346-380V/60Hz/3Φ
22	7159131-1	堵头	Plug
23	02-695661-003	防水接头	Waterprof Connector
24	7159138-8	节流片焊件	Throttle
25	7154047	弹簧	Spring
26	7159138-5	拨抓	Dog

Rinse System 喷淋系统



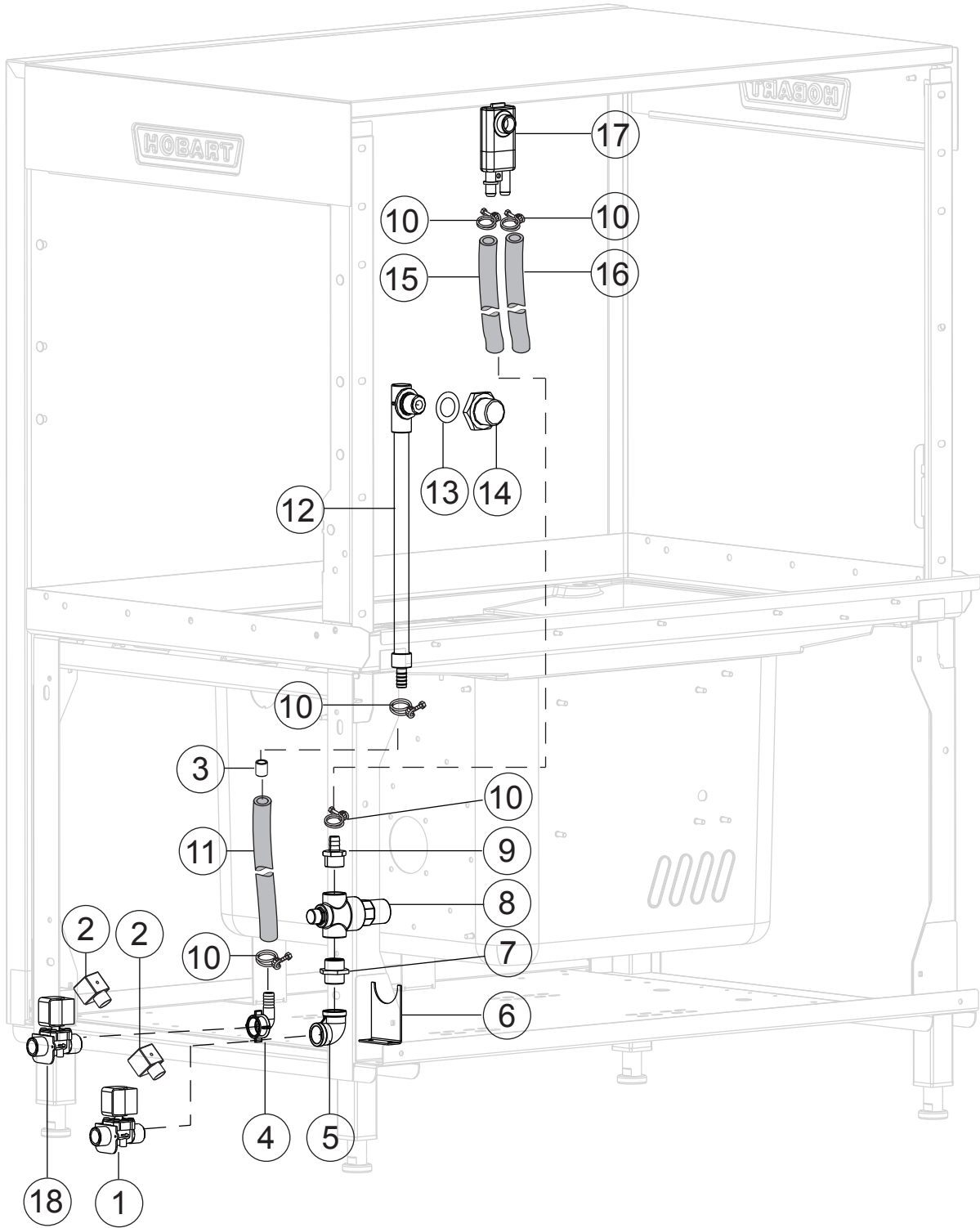
Rinse System

喷淋系统

Illus. 序号	Parts No. 零件号	Description 名称	
1	01-291337-001	喷淋立管上支板	Holding Plate
2	01-245318-002	上三通	T-Piece
3	02-884505-002	O 形圈 25×3.55	O-Ring 25×3.55
4	00-885572-001	螺母	Nut
5	01-291340-001	喷臂组件	Rinse Pipe
6	01-245062-001	上喷臂挡片	Retaining Spring
7	02-245340-001	O 形圈 20×2.65	O-Ring 20×2.65
8	01-245323-003	喷淋立管	Stand Pipe Rinse
9	01-291341-001	喷淋立管下支板	Holding Plate
10	01-245318-001	下三通	T-Piece
11	01-291351-001	下喷臂挡片	Rinse Arrest Plate Base
12	01-245329-001	接头	Nipple
13	02-245340-002	O 形圈 26.5×2.65	O-Ring 26.5×2.65
14	00-172739-009	锁母	Lock Nut
15	00-323945-022	喉箍 22	Hose Clamp 22
16	7159125-32	胶管	Hose
17	743284	宝塔接头	Union
18	FP-028-03	堵头	Plug
19	FP-084-56	补芯	Bushing
20	7159141-3	测温管焊件	Temperature Tube
21	7159140-1	四通	Cross Tee

Fill System

注水系统



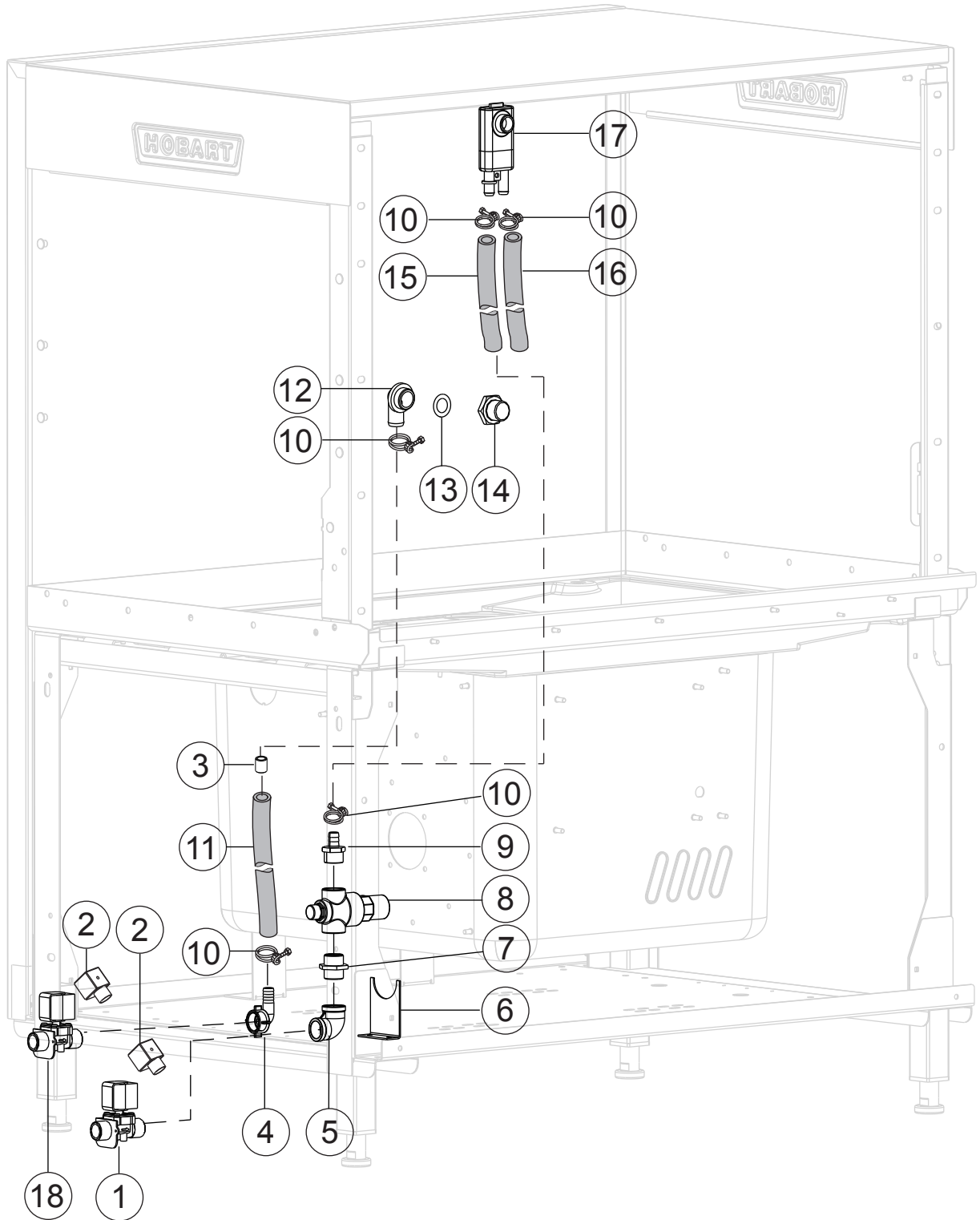
Fill System

注水系统

Illus. 序号	Parts No. 零件号	Description 名称	
1	00-297808-010	进水电磁阀	Magnetic Valve
2	02-228905-001	接头	Connector Jack
3	7159136-1	节流芯	Throttle
4	00-299240-001	胶管弯头	Elbow
5	7155303-9	弯头	Elbow
6	7159121-1	减压阀支架	Valve Bracket
7	743848	外丝	Nipple
8	7155314-3	减压阀	Valve
9	743284	宝塔接头	Union
10	00-323945-022	喉箍 22	Hose Clamp 22
11	7159125-35	胶管	Tube
12	00-897686-001	注水立管合件	Inlet Pipe Assy
13	7159145-1	O型圈 26.3X5.3	O Ring 26.3X5.3
14	00-774670-001	挡水母	Cover Nut
15	7159125-37	胶管	Tube
16	7159125-34	胶管 (无 Booster)	Tube (without Booster)
17	00-775759-001	气隙盒 (带 Booster)	Air Gap (with Booster)
18	00-297808-012	进水电磁阀	Magnetic Valve

Fill System

注水系统



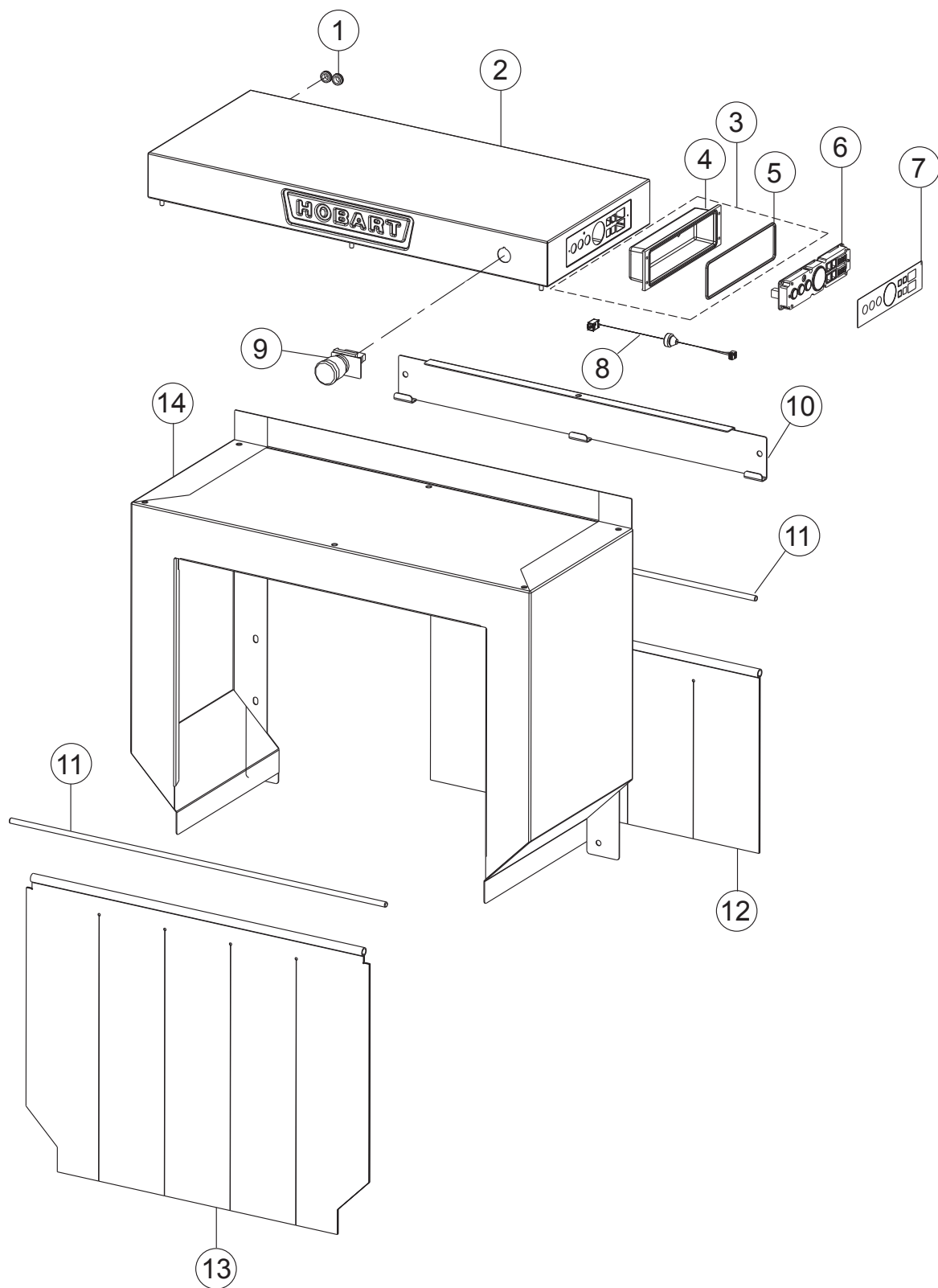
Fill System

注水系统

Illus.	Parts No.	Description	
序号	零件号	名称	
1	00-297808-010	进水电磁阀	Magnetic Valve
2	02-228905-001	接头	Connector Jack
3	7159136-1	节流芯	Throttle
4	00-299240-001	胶管弯头	Elbow
5	7155303-9	弯头	Elbow
6	7159121-1	减压阀支架	Valve Bracket
7	743848	外丝	Nipple
8	7155314-3	减压阀	Valve
9	743284	宝塔接头	Union
10	00-323945-022	喉箍 22	Hose Clamp 22
11	7159125-35	胶管	Tube
12	00-324097-000	注水接头	Elbow
13	00-775305-001	垫圈	Washer
14	324183	锁母	Nut
15	7159125-37	胶管	Tube
16	7159125-34	胶管 (无 Booster)	Tube (without Booster)
17	00-775759-001	气隙盒 (带 Booster)	Air Gap (with Booster)
18	00-297808-012	进水电磁阀	Magnetic Valve

Entry Hood

入口风罩焊件

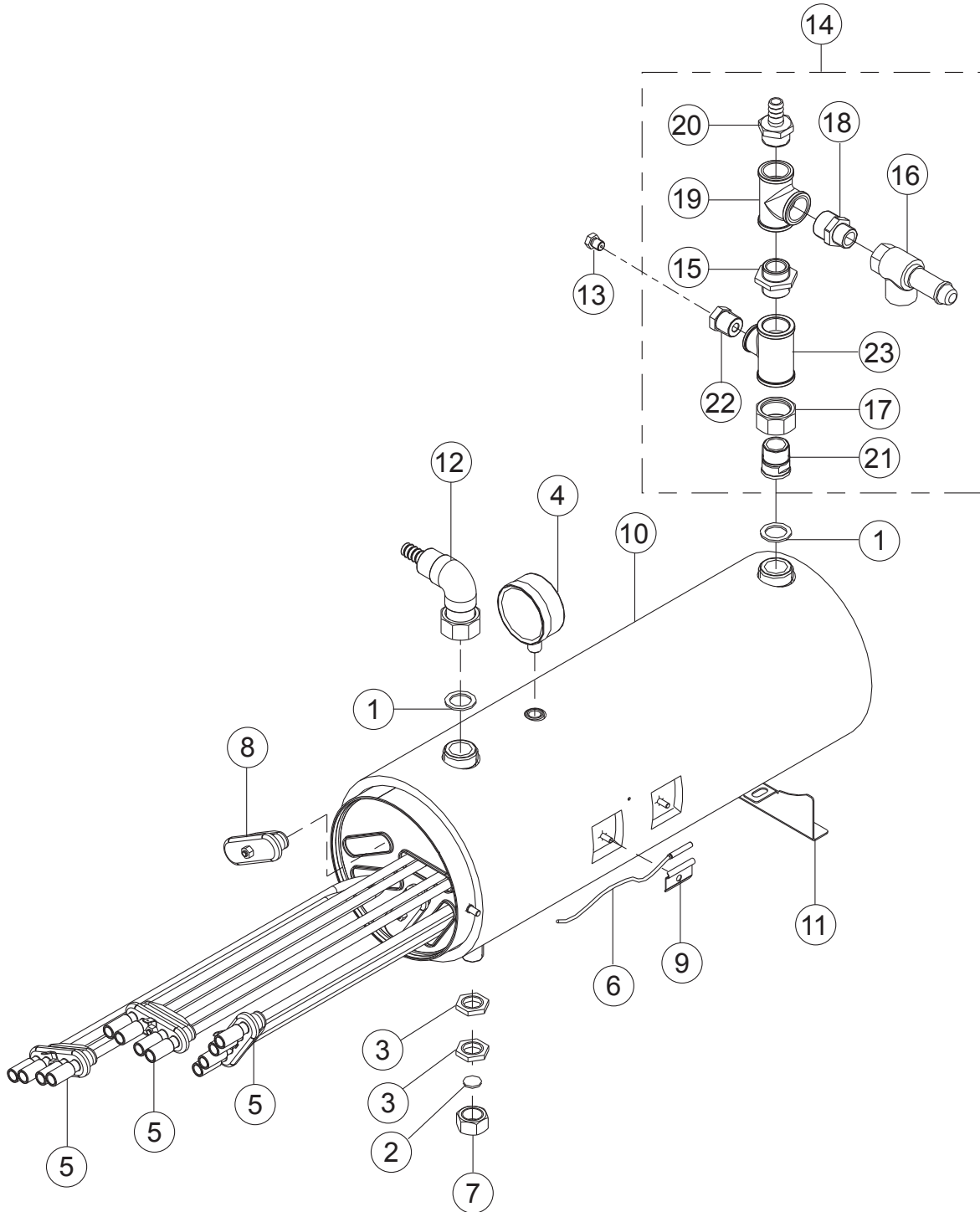


Entry Hood

入口风罩焊件

Illus.	Parts No.	Description	
序号	零件号	名称	
1	00-227748-001	过线胶圈	Gland Cable
2	01-291406-001	顶罩合件 L-R	Display Hood Assy L-R
	01-291406-002	顶罩合件 R-L	Display Hood Assy R-L
3	00-883984-001	BAE 外罩合件	BAE Cover Assy
4	00-883986-001	BAE 外罩	BAE Cover
5	00-883805-001	BAE 外罩密封圈	BAE Cover Seal
6	00-897540-002	BAE 组件	BAE Fully Equiped
7	01-291845-001	面板贴面	Keyboard Foil CNT
8	01-249757-001	BAE 线束	Wiring Harness BAE
9	02-887015-025	急停开关	Emergence Switch
10	01-291538-002	门帘安装板	Curtain Holder
11	01-245396-006	门帘棍	Curtain Rod
12	01-291315-002	短门帘	Curtain
13	01-291315-001	长门帘	Curtain
14	01-291402-001	入口风罩焊件	Hood Assy

Booster 助热器总成



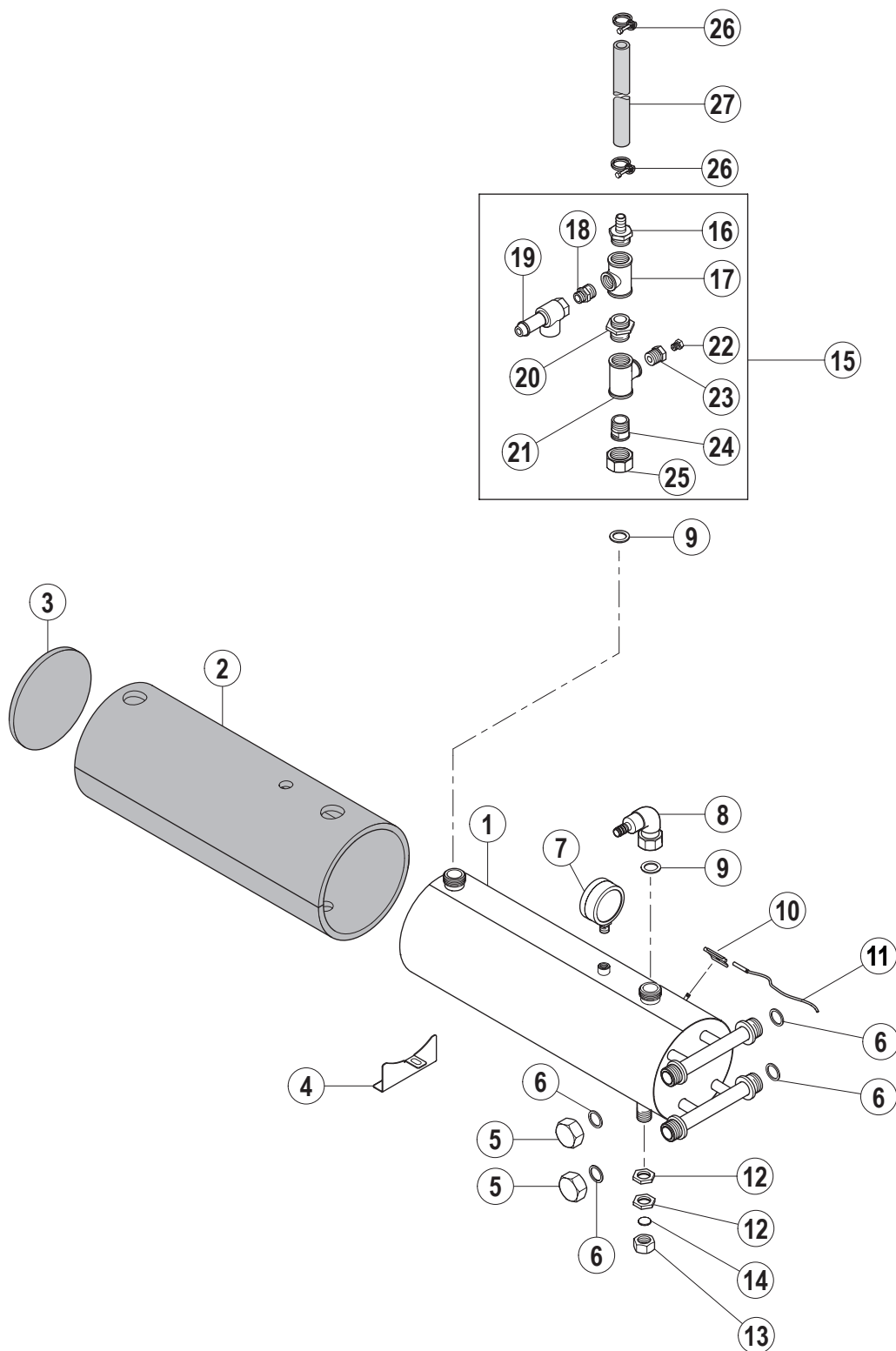
Booster

助热器总成

Illus.	Parts No.	Description	
序号	零件号	名称	
1	00-168611-003	垫圈 φ21	Gasket φ21
2	00-168611-022	密封垫	Sealing
3	00-172739-001	锁母	Nut
4	00-229583-001	BOOSTER 压力表	Pressure Gauge
5	02-324637-001	电热管 220V 6kW	Heating Element 220V 6kW
	02-324637-002	电热管 220V 4kW	Heating Element 220V 4kW
	02-324637-003	电热管 200V 6kW	Heating Element 200V 6kW
	02-324637-004	电热管 200V 4kW	Heating Element 200V 4kW
	02-324637-005	电热管 220V 5kW	Heating Element 220V 5kW
6	00-775612-001	温度探头 (CCA-Smartronic)	Temperature Probe-Booster(CCA-Smartronic)
	7159126-13	温度探头 - 部件 (CCA-Easytronic)	Temperature Probe-Booster(CCA-Easytronic)
7	00-600588-000	盖母	Cover Nut
8	02-774808-001	堵头	Plug
9	00-775489-001	温度探头压片	Fix Plate
10	00-897683-001	BOOSTER 筒体合件	Booster Assy
11	01-243201-001	BOOSTER 支板	Booster Bracket
12	01-245560-001	弯头组件	Inlet Assy
13	FP-028-03	堵头	Plug
14	01-244435-002	升温箱进水组件	Booster Inlet Assy
15	00-227931-000	联接头	Nipple
16	00-229621-001	安全阀	Safe Valve
17	00-600806-000	锁母	Lock Nut
18	00-602757-000	外丝	Nipple
19	00-603163-000	三通	Tee
20	00-897680-001	宝塔接头	Union
21	01-291286-001	联接头	Nipple
22	01-291287-001	补芯	Bushing
23	01-291288-001	三通	Tee

Booster(Steam)

助热器总成 (蒸汽型)



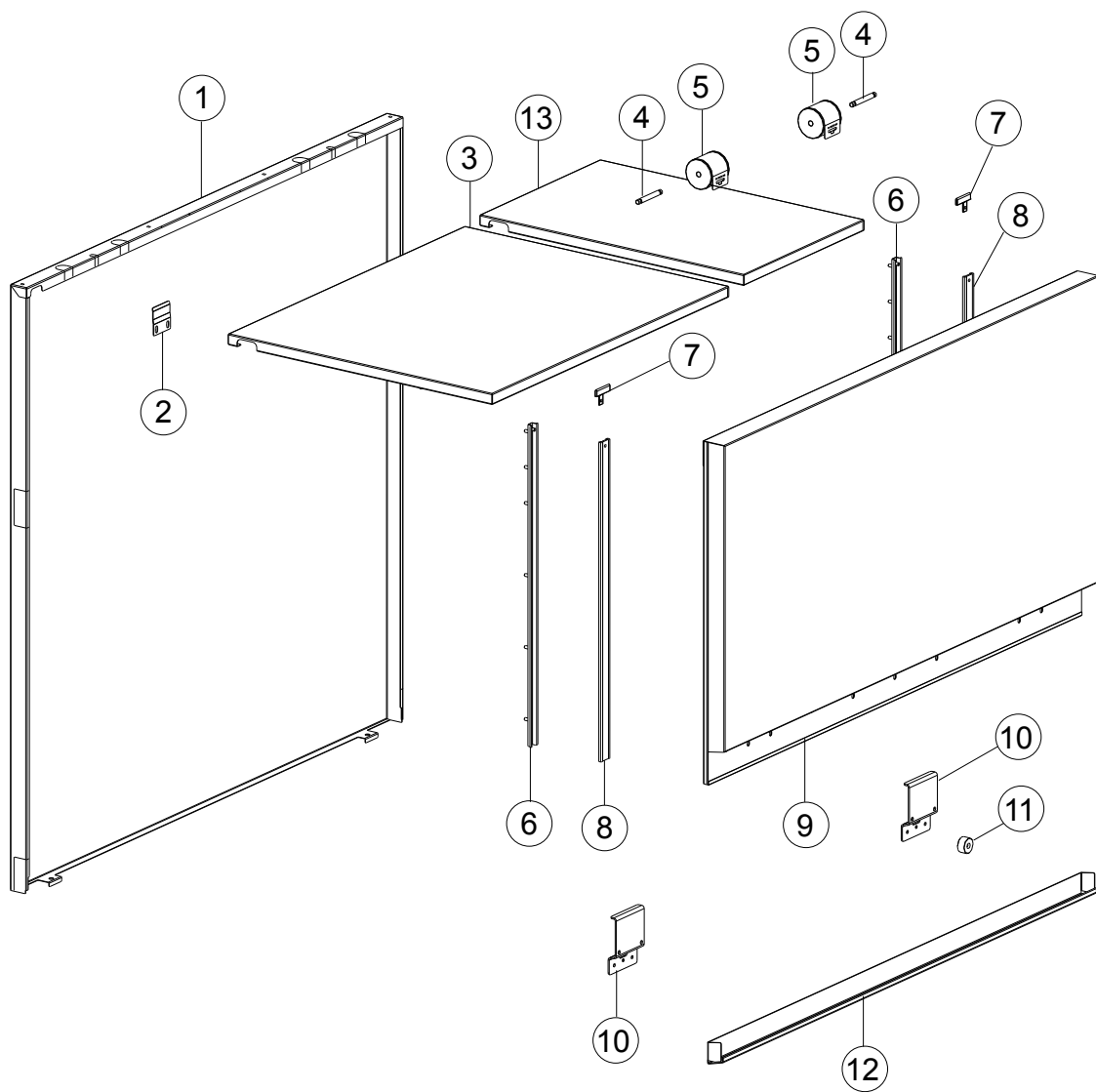
Booster(Steam)

助热器总成（蒸汽型）

Illus.	Parts No.	Description	
序号	零件号	名称	
1	01-245602-002	升温箱组件	Booster Assy
2	00-897657-001	BOOSTER 筒体保温垫	Booster Insulation
3	00-897657-002	BOOSTER 端盖保温垫	Booster Cover Insulation
4	01-243201-001	BOOSTER 支板	Booster Braket
5	01-245605-001	盖母	Cover Nut
6	00-302574-014	密封垫圈	Gasket
7	00-229583-001	BOOSTER 压力表	Pressure Gauge
8	01-245560-001	弯头组件	Fitting Detergent Injection
9	00-168611-003	垫圈 $\phi 21$	Washer 21
10	00-775489-001	温度探头压片	Fix Plate
11	00-775612-001	温度探头 (CCA-Smartronic)	Temperature Probe (CCA-Smartronic)
	7159126-13	温度探头 - 部件 (CCA-Easytronic)	Temperature Probe (CCA-Easytronic)
12	00-172739-001	锁母	Nut
13	00-600588-000	盖母	Cover Nut
14	00-168611-022	密封垫	Gasket
15	01-244435-002	BOOSTER 出水管组件	Piping- Booster Outlet
16	00-897680-001	宝塔接头	Union
17	00-603163-000	三通	Tee
18	00-602757-000	外丝	Nipple
19	00-229621-001	安全阀	Safe Valve
20	00-227931-000	联接头	Nipple
21	01-291288-001	三通	Tee
22	FP-028-03	堵头	Plug
23	01-291287-001	补芯	Bushing
24	01-291286-001	联接头	Nipple
25	00-600806-000	锁母	Nut
26	00-323945-022	喉箍 22	Clamp 22
27	7159125-38	胶管	Hose

Door and Insulation

隔热板组件



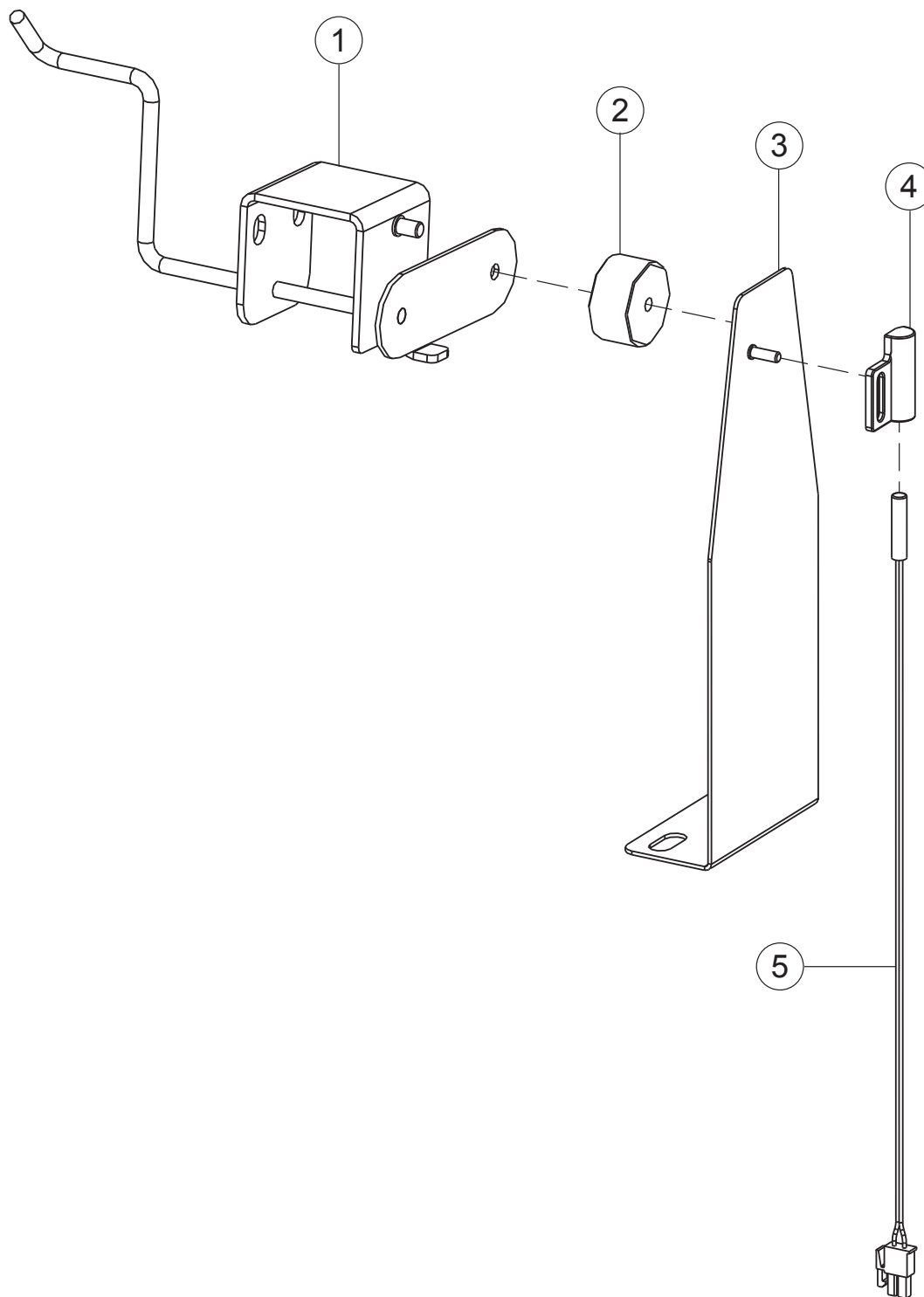
Door and Insulation

隔热板组件

Illus.	Parts No.	Description	
序号	零件号	名称	
1	02-291317-007	隔热背板	Back Panel
2	01-291605-001	支板	Holder Back Panel
3	7159117-5	隔热顶板焊件	Ceiling Insulation
4	01-245281-001	卷簧轴	Axle
5	01-245278-005	卷簧总成	Door Spring
	01-245278-003	卷簧总成（不带隔热）	Door Spring(Without insulation)
6	01-245126-003	门导轨焊件	Profile
7	01-291426-001	挡汽块	Steam Baffle Door
8	00-325064-008	门滑块	Slider
9	7159112-2	隔热门板焊件	Insulate Door
	7159112-3	门板焊件（不带隔热）	Door(Without insulation)
10	01-245127-001	磁铁架	Door Stopper
11	00-774714-001	门磁铁	Magnet
12	02-245129-007	门把手焊件	Door Handle
13	7159117-12	隔热顶板焊件（仅用于不带排风）	Ceiling Insulation(only without exhaust)

Auto Timer (only CCA-smart)

触发开关组件 (仅 CCA-smart)



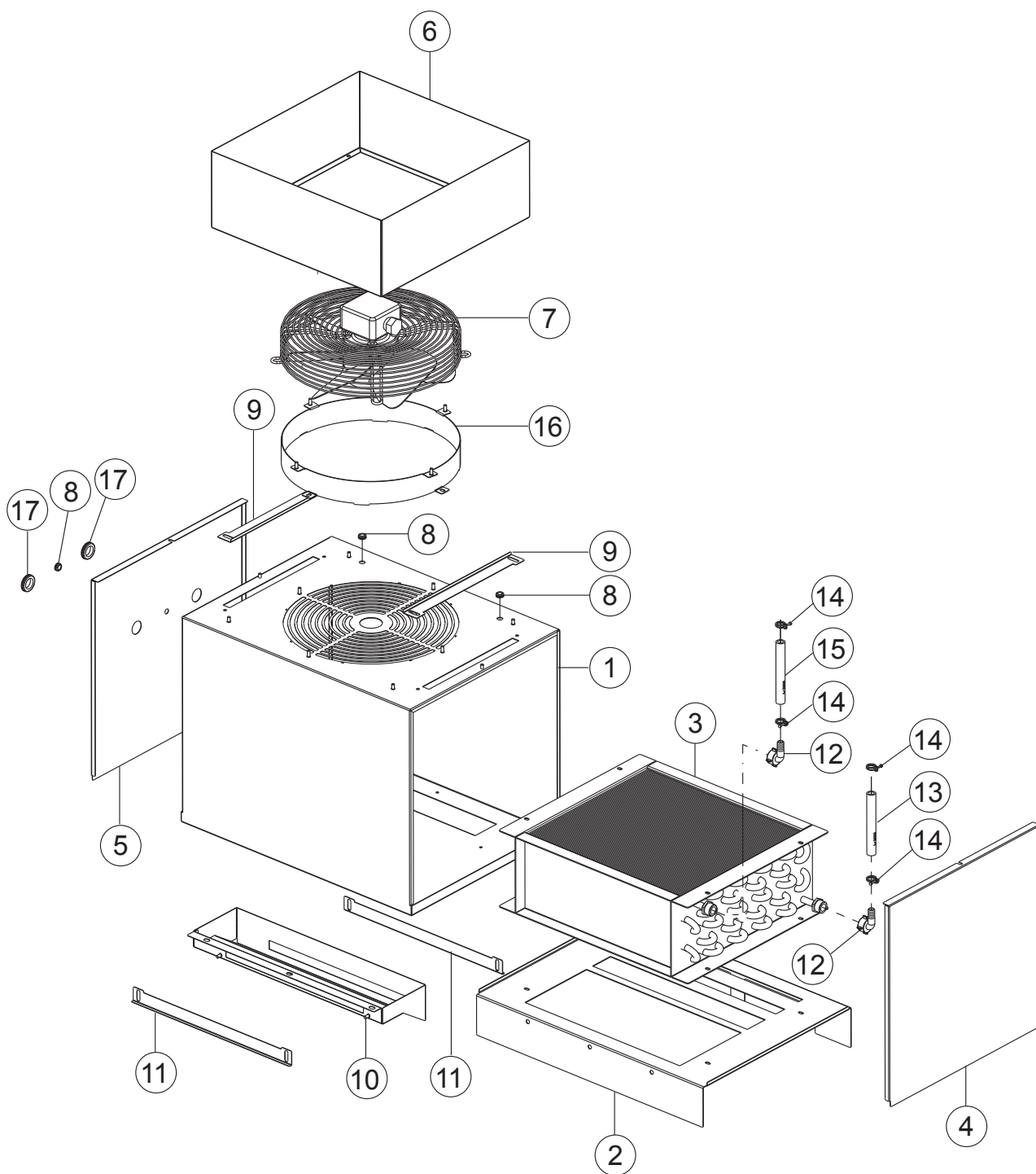
Auto Timer(only CCA-smart)

触发开关组件（仅 CCA-smart）

Illus. 序号	Parts No. 零件号	Description 名称	
1	01-242189-001	磁铁架组件 L-R	Magnet Braket Assy L-R
	01-242189-002	磁铁架组件 R-L	Magnet Braket Assy R-L
2	00-774714-001	门磁铁	Magnet
3	7159133-2	磁开关支架	Holder Reed Switch
4	00-883838-001	磁开关压板	Switch Holder
5	01-240288-001	磁开关总成	Magnetic Switch
	02-229517-002	磁开关总成 (with autotimer)	Magnetic Switch(with autotimer)

Heat Recovery(Optional)

热回收组件(可选)



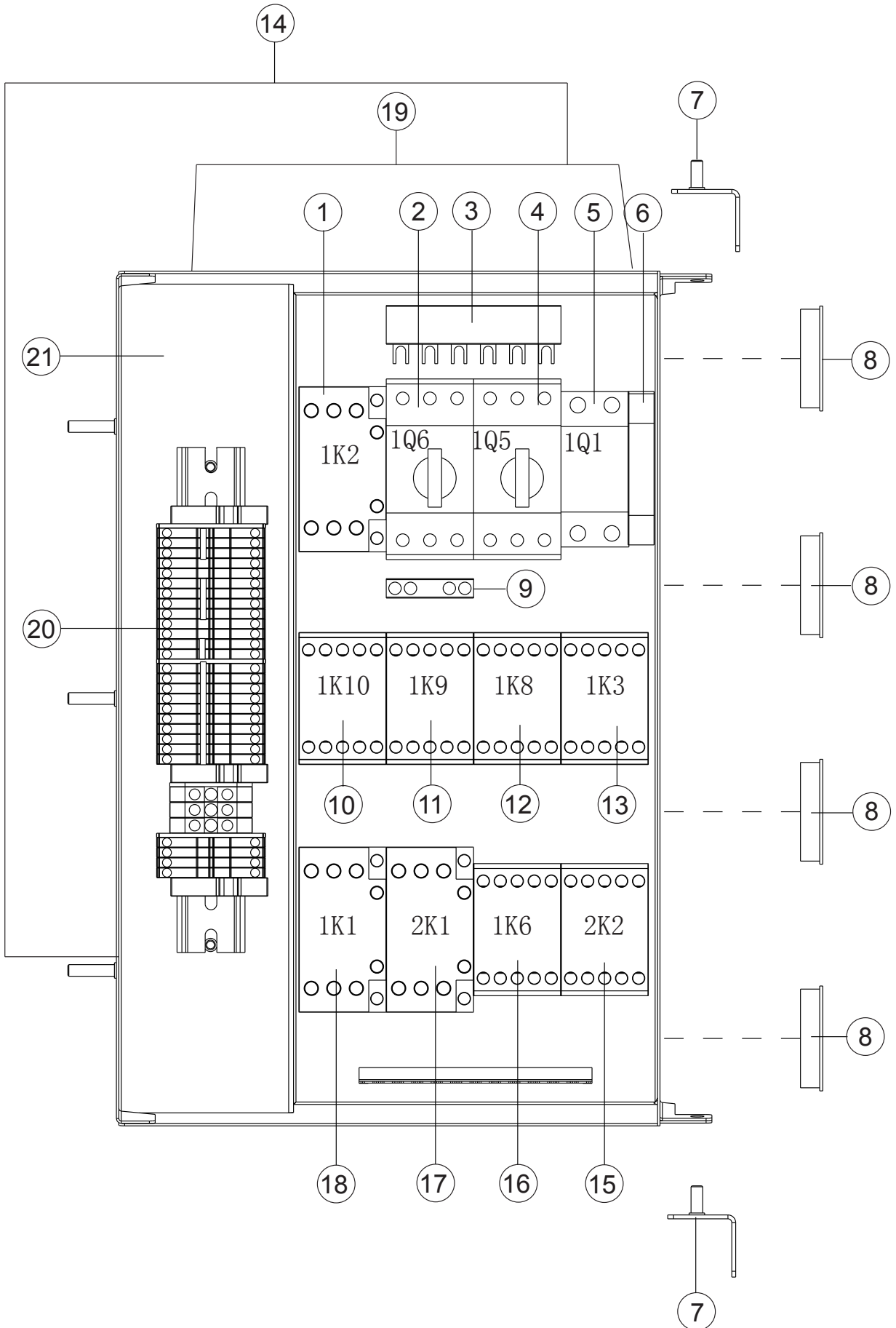
Heat Recovery

热回收组件

Illus.	Parts No.	Description	
序号	零件号	名称	
1	01-291392-001	排汽外罩组件	Exhaust
2	01-245274-004	冷凝器底座	Condensator Board
3	02-245490-007	冷凝器	Condensator
4	01-245206-001	排汽罩前盖板	Panel-Front
5	01-245206-003	排汽罩后盖板	Panel-Rear
6	01-245744-002	排风扇外罩	Exhaust Box
7	02-781492-001	排风扇 220V 50Hz	Fan 220V 50Hz
	02-781492-002	排风扇 220V 60Hz	Fan 220V 60Hz
8	00-227748-001	过线胶圈	Gland Cable
9	01-291395-002	调节板	Gate
10	01-291394-001	通汽道焊件 L-R	Air Channel L-R
	01-291394-002	通汽道焊件 R-L	Air Channel R-L
11	01-291395-001	调节板	Gate
12	00-299240-001	胶管弯头	Elbow
13	7159125-39	胶管	Hose
14	00-323945-022	喉箍 22	Hose Clamp 22
15	7159125-38	胶管	Hose
16	00-781377-002	排风扇支架	Fan Bracket
17	00-227748-004	过线胶圈	Gland Cable

Switch Box(Easytronic)

电器箱装配 (Easytronic)



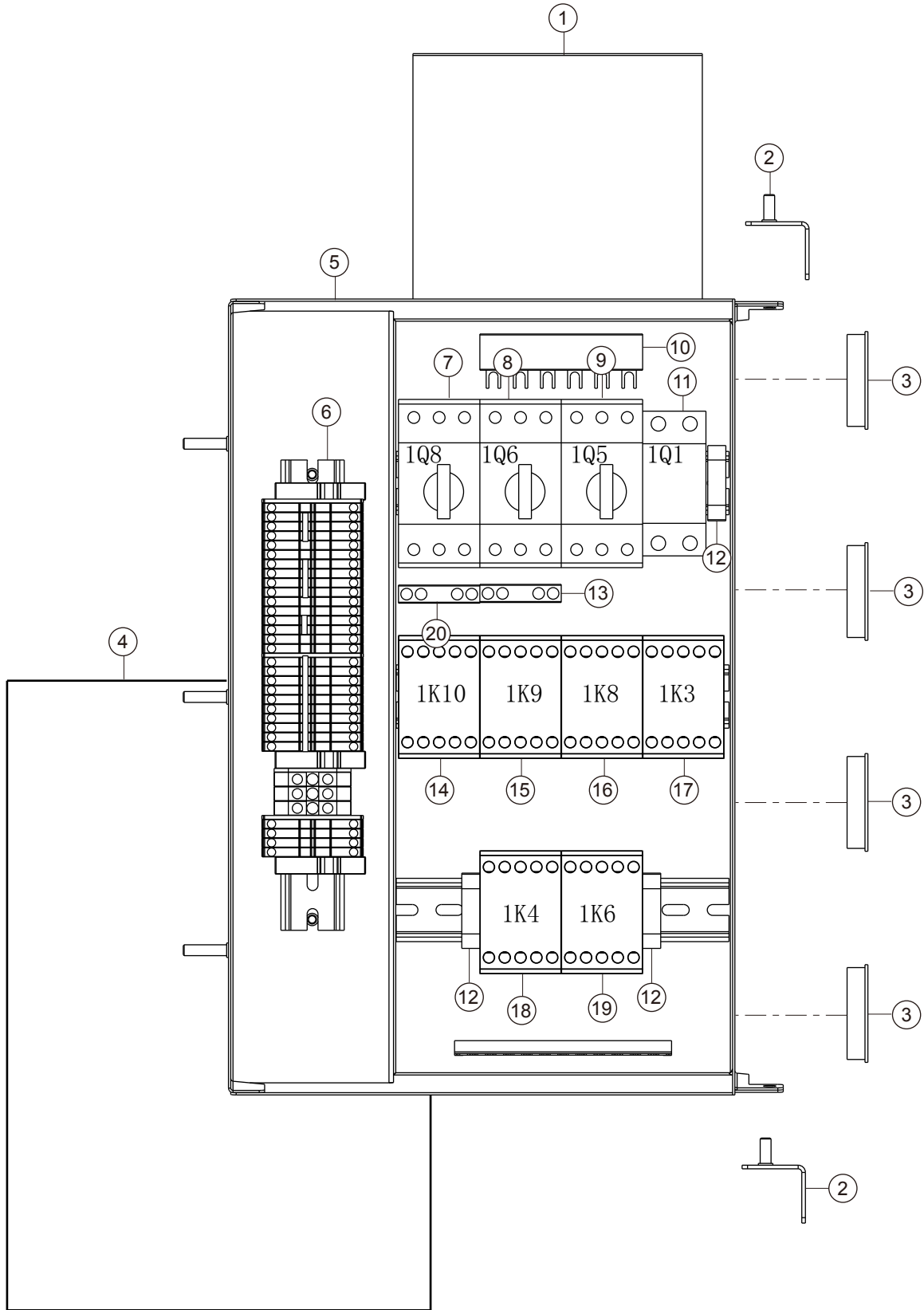
Switch Box(Easytronic)

电器箱装配 (Easytronic)

Illus.	Parts No.	Description	
序号	零件号	名称	
1	02-296926-001	接触器 DILM25 10C 1K2	Contactor
2	02-695523-005	电机保护开关 PKZMC-1 1Q6	Motor Protection Switch
3	02-785429-001	三相适配器 B3.0/2-PKZ0	Three Phase Adaptor
4	02-695523-009	电机保护开关 PKZMC-6.3 1Q5	Motor Protection Switch
5	02-301777-002	两相断路器 PL9-D6/2 1Q1	Circuit Breaker
6	WAGO249	挡块	Block
7	01-245228-002	支架焊件	Braket
8	00-886756-001	过线胶圈	Cable Bushing
9	02-695524-001	辅助模块 NHI-E-11-PKZ0	Auxiliary Contact
10	02-695521-004	接触器 DILM07 01C 1K10	Contactor
11	743402-3	接触器 DILM07 10C 1K9	Contactor
12	743402-3	接触器 DILM07 10C 1K8	Contactor
13	02-695521-001	接触器 DILM09 10C 1K3	Contactor
14	7159125-21	挡水帘	Waterscreen
15	743402-3	接触器 DILM07 10C 2K2	Contactor
16	02-695521-004	接触器 DILM07 01C 1K6	Contactor
17	743402-3	接触器 DILM07 10C 2K1	Contactor
	02-296926-001	接触器 DILM25 10C 1K1	Contactor
18	02-296926-001	接触器 DILM25 10C 1K1	Contactor
19	00-374384-000	图纸袋	Diagram Bag
20	02-785509-003	接线排	Terminals
21	7159115-5	电器箱焊件 L-R	Control Box L-R
	7159115-6	电器箱焊件 R-L	Control Box R-L

Switch Box(Easytronic-steam heating)

电器箱装配 (Easytronic- 蒸汽加热)



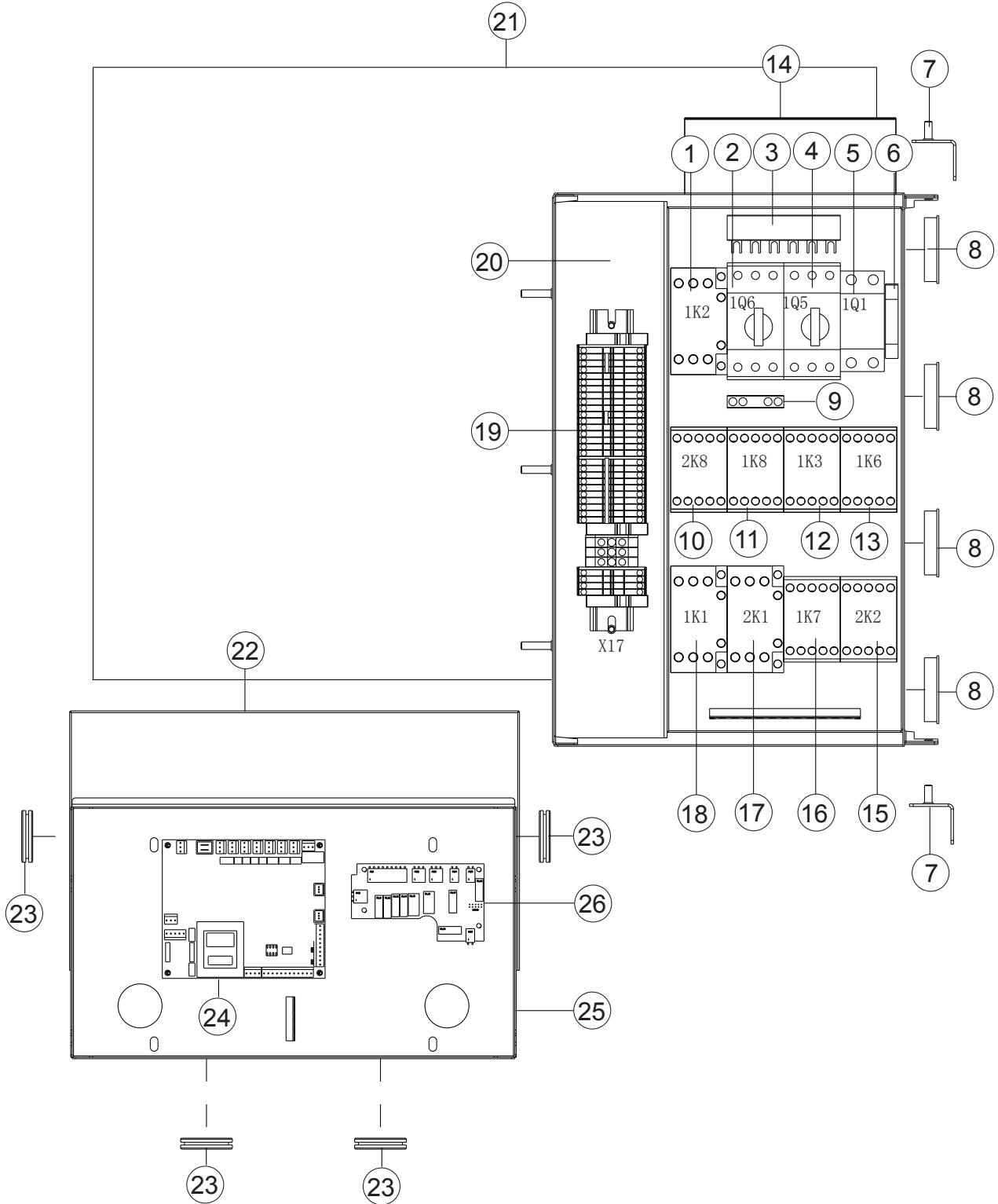
Switch Box(Easytronic-steam heating)

电器箱装配 (Easytronic- 蒸汽加热)

Illus.	Parts No.	Description	
序号	零件号	名称	
1	02-374384-001	图纸袋	Diagram bag
2	01-245228-002	支架焊件	Bracket
3	00-886756-001	过线胶圈	Cable bushing
4	7159125-21	挡水帘	Waterscreen
5	7159115-5	电器箱焊件 L-R	Control box L-R
	7159115-6	电器箱焊件 R-L	Control box R-L
6	02-785509-003	端子排	Terminal
7	02-695523-006	马达保护开关 PKZMC-1.6 1Q8	Motor protector PKZMC-1.6 1Q8
	02-695523-007	马达保护开关 PKZMC-2.5 1Q8 (仅 220/200V 机型)	Motor protector PKZMC-2.5 1Q8 (for 220/200V)
8	02-695523-005	马达保护开关 PKZMC-1 1Q6	Motor protector PKZMC-1 1Q6
	02-695523-008	马达保护开关 PKZMC-4 1Q6 (仅 220/200V 机型)	Motor protector PKZMC-4 1Q6 (only 220/200V)
9	02-695523-009	马达保护开关 PKZMC-6.3 1Q5	Motor protector PKZMC-6.3 1Q5
	02-695523-010	马达保护开关 PKZMC-10 1Q5 (仅 220/200V 机型)	Motor protector PKZMC-10 1Q5 (only for 220/200V)
10	02-785429-001	适配器 B3.0/2-PKZ0	Adapter B3.0/2-PKZ0
11	02-301777-002	断路器 PL9-D6/2 1Q1	Breaker PL9-D6/2 1Q1
12	WAGO249	挡块	Block
13	02-695524-001	辅助模块 NHI-E-11-PKZ0	Auxiliary Contact NHI-E-11-PKZ0
14	02-695521-004	接触器 DILM07 01C 1K10	Contactoer DILM07 01C 1K10
15	743402-3	接触器 DILM07 10C 1K4	Contactoer DILM07 10C 1K4
16	743402-3	接触器 DILM07 10C 1K8	Contactoer DILM07 10C 1K8
17	02-695521-001	接触器 DILM09 10C 1K3	Contactoer DILM09 10C 1K3
	02-695521-005	接触器 DILM12 10C 1K3 (仅 220/200V 机型)	Contactoer DILM12 10C 1K3 (only for 220/200V)
18	743402-3	接触器 DILM07 10C 1K4	Contactoer DILM07 10C 1K4
19	02-695521-004	接触器 DILM07 01C 1K6	Contactoer DILM07 01C 1K6
20	02-695524-001	辅助模块 NHI-E-11-PKZ0 (仅带烘干机型)	Auxiliary Contact NHI-E-11-PKZ0 (only with dryer)

Switch Box(Smartronic)

电器箱装配 (Smartronic)



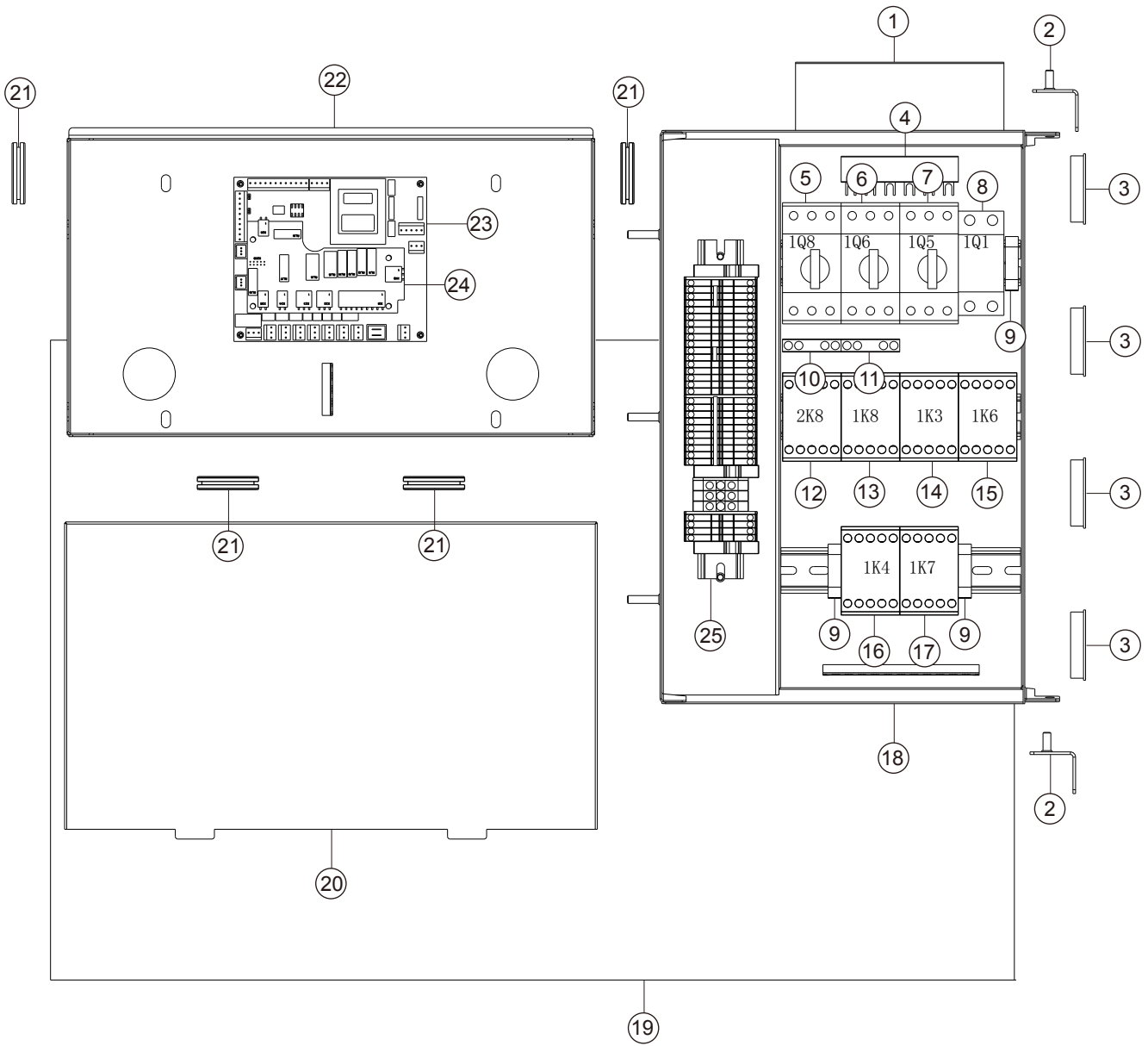
Switch Box(Smartronic)

电器箱装配 (Smartronic)

Illus.	Parts No.	Description	
序号	零件号	名称	
1	02-296926-001	接触器 DILM25 10C 1K2	Contactor
2	02-695523-006	电机保护开关 PKZMC-1.6 1Q6	Motor Protection Switch
3	02-785429-001	三相适配器 B3.0/2-PKZ0	Three Phase Adaptor
4	02-695523-009	电机保护开关 PKZMC-6.3 1Q5	Motor Protection Switch
5	02-301777-002	两相断路器 PL9-D6/2 1Q1	Circuit Breaker
6	WAGO249	挡块	Block
7	01-245228-002	支架焊件	Braket
8	00-886756-001	过线胶圈	Cable Bushing
9	02-695524-001	辅助模块 NHI-E-11-PKZ0	Auxiliary Contact
10	02-695521-004	接触器 DILM07 01C 2K8	Contactor
11	02-695521-004	接触器 DILM07 01C 1K8	Contactor
12	02-695521-001	接触器 DILM09 10C 1K3	Contactor
13	743402-3	接触器 DILM07 10C 1K6	Contactor
14	00-374384-000	图纸袋	Diagram Bag
15	743402-3	接触器 DILM07 10C 2K2	Contactor
16	743402-3	接触器 DILM07 10C 1K7	Contactor
17	743402-3	接触器 DILM07 10C 2K1	Contactor
	02-296926-001	接触器 DILM25 10C 2K1	Contactor
18	02-296926-001	接触器 DILM25 10C 1K1	Contactor
19	02-785509-003	接线排	Terminals
20	7159115-5	电器箱焊件 L-R	Control Box L-R
	7159115-6	电器箱焊件 R-L	Control Box R-L
21	7159125-22	挡水帘	Waterscreen
22	02-895732-001	盖板	Cover
23	00-785565-005	过线胶圈	Cable Bushing
24	00-897545-004	控制板	Control Board
25	7159101-3	小电器箱	Control Box
26	00-897546-002	扩展板	Control Board

Switch Box(Smartronic-Steam heating)

电器箱装配 (Smartronic- 蒸汽加热)



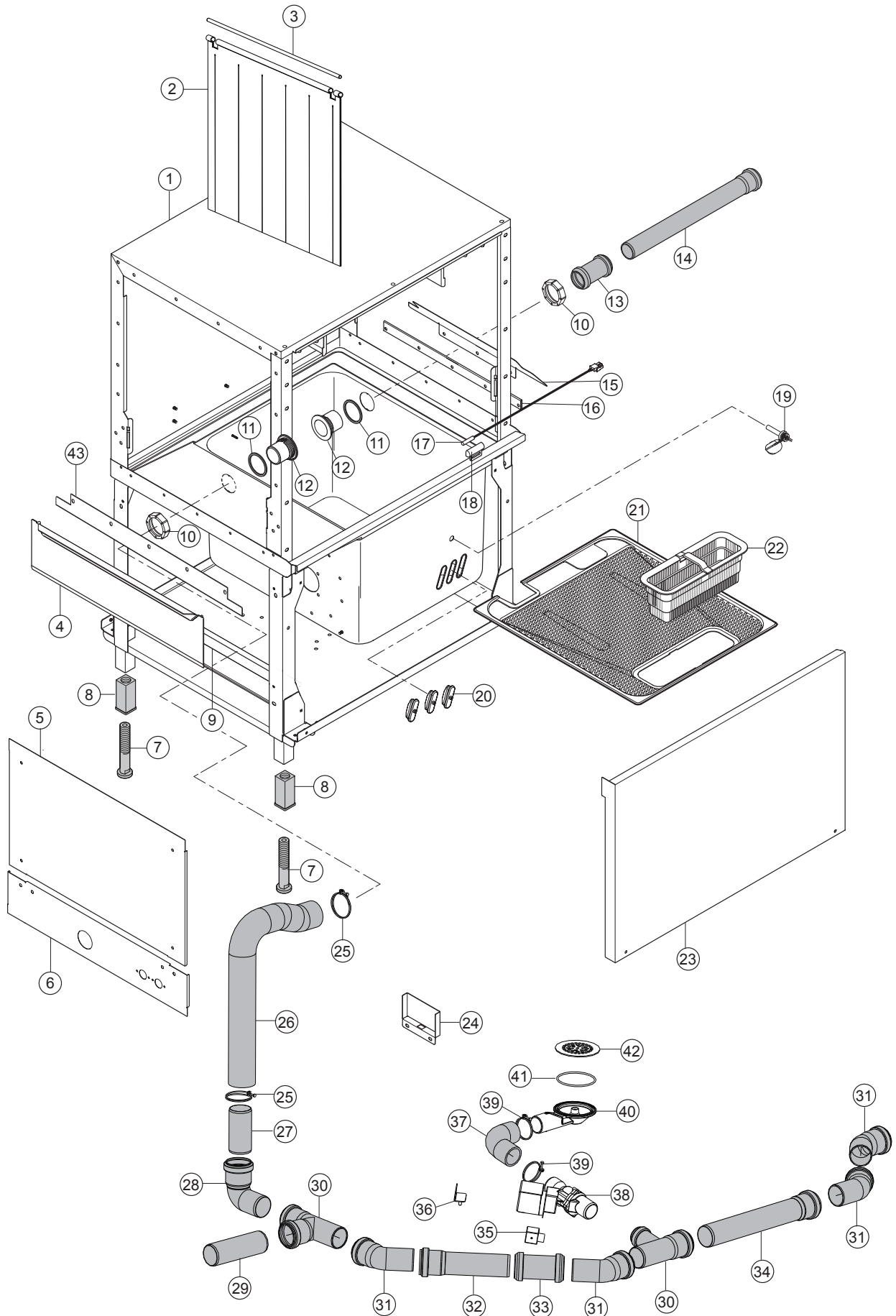
Switch Box(Smartronic-Steam heating)

电器箱装配 (Smartronic- 蒸汽加热)

Illus.	Parts No.	Description	
序号	零件号	名称	
1	02-374384-001	图纸袋	Diagram bag
2	01-245228-002	支架焊件	Bracket
3	00-886756-001	过线胶圈	Cable bushing
4	02-785429-001	适配器 B3.0/2-PKZ0	Adapter B3.0/2-PKZ0
5	02-695523-006	马达保护开关 PKZMC-1.6 1Q8	Motor protector PKZMC-1.6 1Q8
	02-695523-007	马达保护开关 PKZMC-2.5 1Q8 (仅 220/200V 机型)	Motor protector PKZMC-2.5 1Q8 (for 220/200V)
6	02-695523-006	马达保护开关 PKZMC-1.6 1Q6	Motor protector PKZMC-1.6 1Q6
	02-695523-008	马达保护开关 PKZMC-4 1Q6 (仅 220/200V 机型)	Motor protector PKZMC-4 1Q6 (only 220/200V)
7	02-695523-009	马达保护开关 PKZMC-6.3 1Q5	Motor protector PKZMC-6.3 1Q5
	02-695523-010	马达保护开关 PKZMC-10 1Q5 (仅 220/200V 机型)	Motor protector PKZMC-10 1Q5 (only for 220/200V)
8	02-301777-002	断路器 PL9-D6/2 1Q1	Breaker PL9-D6/2 1Q1
9	WAGO249	挡块	Block
10	02-695524-001	辅助模块 NHI-E-11-PKZ0 (仅带烘干机型)	Auxiliary Contact NHI-E-11-PKZ0 (only with dryer)
11	02-695524-001	辅助模块 NHI-E-11-PKZ0	Auxiliary Contact NHI-E-11-PKZ0
12	02-695521-004	接触器 DILM07 01C 2K8	Contactoer DILM07 01C 2K8
13	02-695521-004	接触器 DILM07 01C 1K8	Contactoer DILM07 01C 1K8
14	02-695521-001	接触器 DILM09 10C 1K3	Contactoer DILM09 10C 1K3
	02-695521-005	接触器 DILM12 10C 1K3 (仅 220/200V 机型)	Contactoer DILM12 10C 1K3 (only for 220/200V)
15	743402-3	接触器 DILM07 10C 1K6	Contactoer DILM07 10C 1K6
16	743402-3	接触器 DILM07 10C 1K4	Contactoer DILM07 10C 1K4
17	743402-3	接触器 DILM07 10C 1K7	Contactoer DILM07 10C 1K7
18	7159115-5	电气盒 L-R	Control box L-R
	7159115-6	电气盒 R-L	Control box R-L
19	7159125-22	挡水帘	Waterscreen
20	02-895732-001	盖板	Cover
21	00-785565-005	过线胶圈	Cable bushing
22	7159101-3	小电器盒	Control box
23	00-897545-004	主控板	Control board
24	00-897546-002	扩展板	Control board
25	02-785509-003	端子排	Terminal

Prewash Module

预洗模块



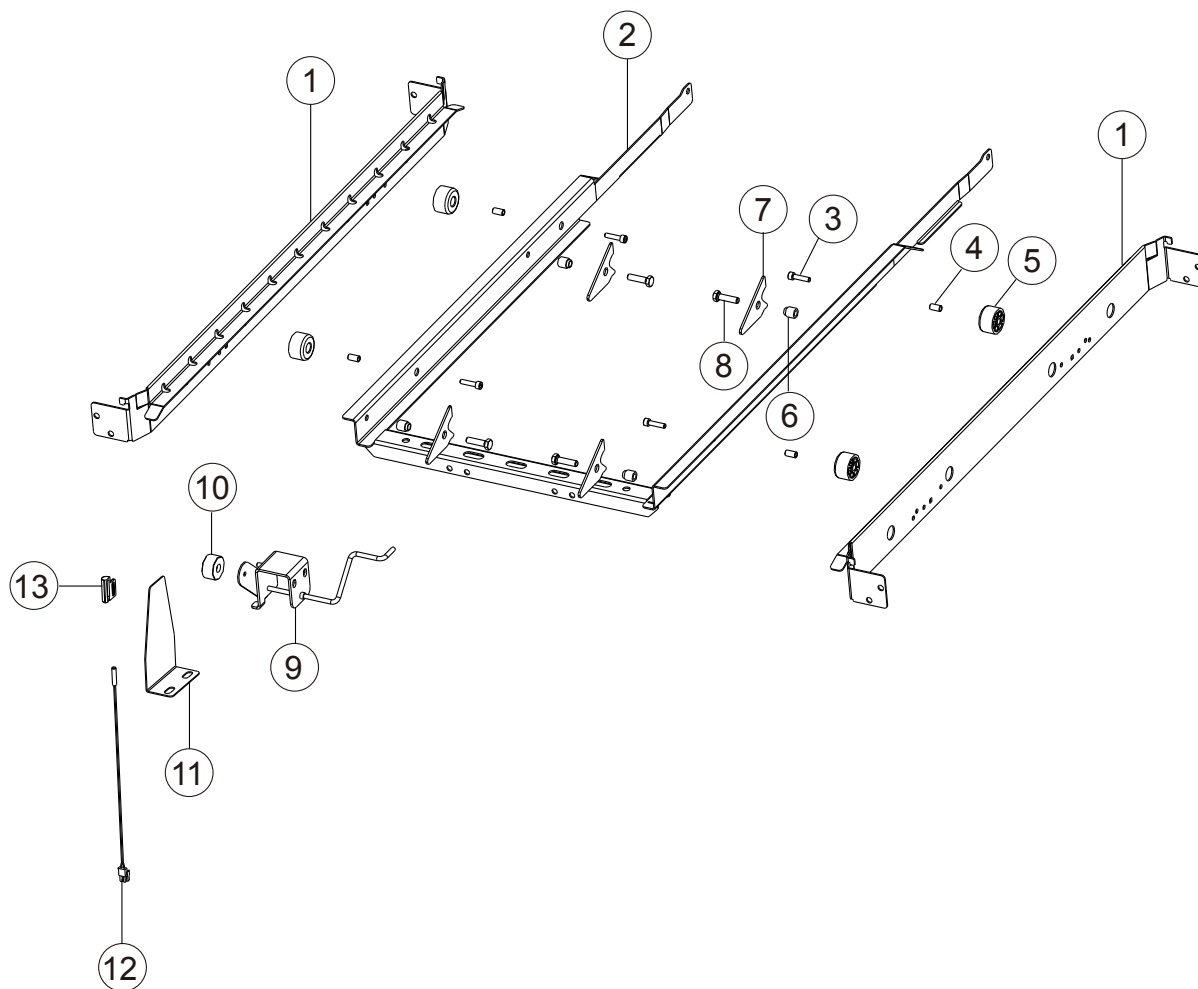
Prewash Module

预洗模块

Illus.	Parts No.	Description	
序号	零件号	名称	
1	01-291706-001	预洗模块框架合件 L-R	S-Wash Module L-R
	01-291706-002	预洗模块框架合件 R-L	S-Wash Module R-L
2	01-291315-003	短门帘	Curtain
3	01-245396-006	门帘棍	Curtain Rod
4	01-291429-001	水箱端板焊件	Table Plate Assy
5	01-291409-001	入口护板	Entry Cover
6	01-291408-001	入口下护板 L-R	Entry Cover L-R
	01-291408-002	入口下护板 R-L	Entry Cover R-L
7	00-325007-001	地脚	Foot Screw-in Part
8	00-325008-001	地脚座	Kit Adjustable Foot Fin
9	01-291432-001	联结板焊件 L-R	Cross Brace L-R
	01-291432-002	联结板焊件 R-L	Cross Brace R-L
10	01-245165-001	溢流管锁母	Nut Overflow
11	01-245460-001	密封垫	Seal Overflow
12	01-245112-001	溢流管	Overflow Pipe
13	00-229680-001	短管	Tube
14	00-229679-006	直管	Tube
15	00-896430-003	挡水板	Splash Sheet
16	00-325155-003	U形板	U Plate
17	01-240288-001	磁开关总成	Magnetic Switch
18	00-883838-001	磁开关压板	Switch Holder
19	01-245621-002	浮子开关	Mit Temperature Hler NTC
20	02-774808-001	堵头	Blind Plug
21	01-245047-006	过滤筛网 L-R	Tank Cover Filter L-R
	01-245047-005	过滤筛网 R-L	Tank Cover Filter R-L
22	01-245170-010	过滤篮	Screen Baskte Compl. 2-Parts
23	01-291407-004	前护板 L-R	Front Panel L-R
	01-291407-005	前护板 R-L	Front Panel R-L
24	01-291982-001	溢流盒	Over Flow Housing
25	00-323945-064	喉箍 64	Hose Clamp 64
26	01-291519-001	排水胶管	Hose
27	00-325737-007	短接管	Connector
28	00-230080-001	弯头	Elbow
29	00-325737-004	直管	Tube
30	00-230079-001	三通	Tee
31	00-377340-001	45°弯头	45° Elbow
32	00-229679-011	直管	Tube
33	00-229680-001	短管	Tube
34	00-229679-040	直管	Tube
35	02-228905-001	接头	Connect Jack
36	01-291684-002	排水阀支架焊件	Valve Holder Assy
37	01-291527-002	排水胶管	Hose
38	00-774683-001	排水电磁阀	Drain Valve
39	00-323945-053	喉箍 53	Clamp 53
40	01-245109-001	排水阀座组件	Drain Piece
41	02-245340-004	O形圈 80x3.55	O-Ring
42	01-245107-001	过滤网	Coarse Screen Wash Tank
43	00-896394-001	加强板	Reinforce Panel

Transport System(Prewash)

传动系统(预洗)



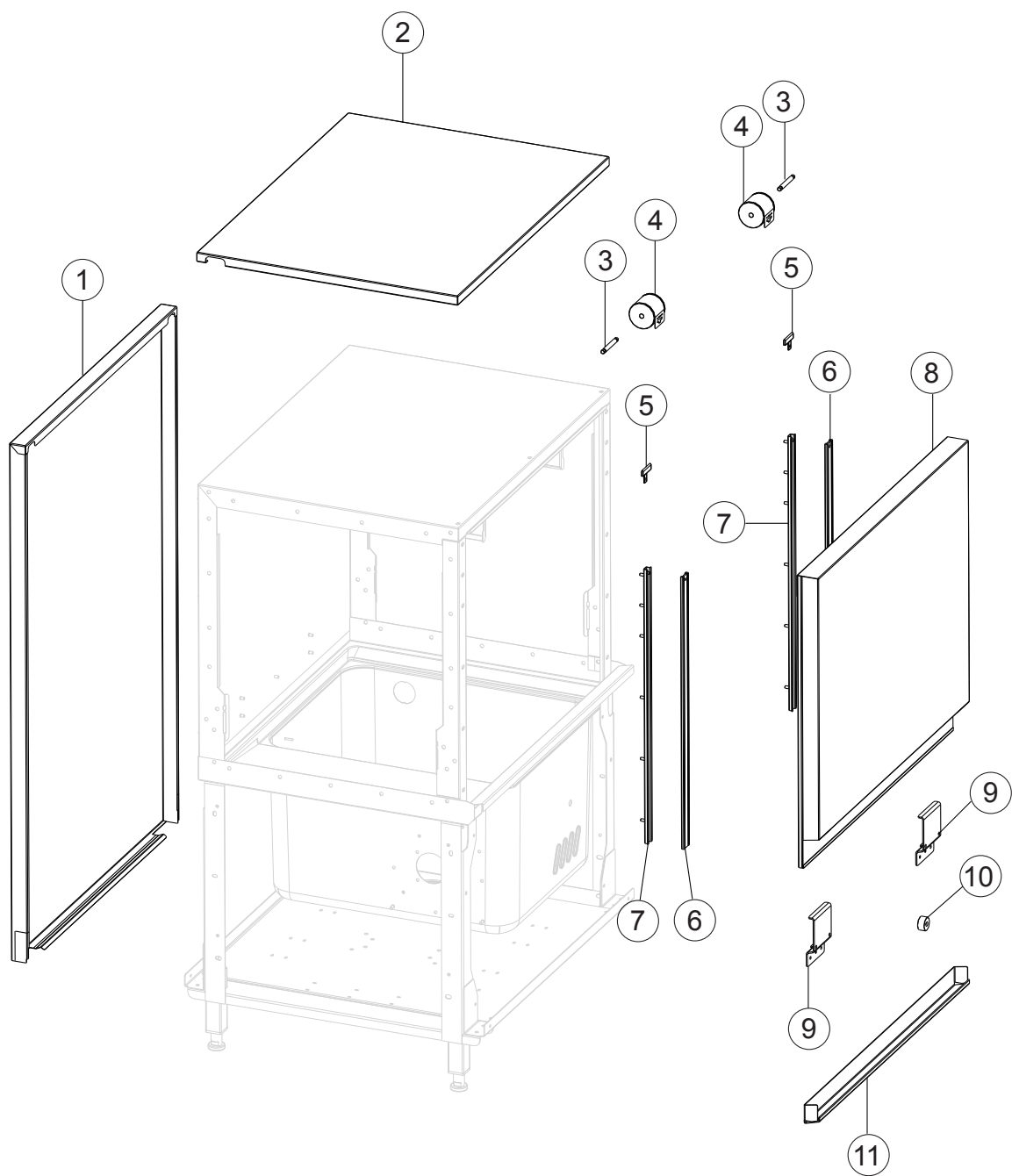
Transport System(Prewash)

传动系统(预洗)

Illus.	Parts No.	Description	
序号	零件号	名称	
1	01-291368-002	导轨	Tray Guide
2	01-291375-002	碗架焊件	Transport Frame Assy
3	00-603026-000	内六角螺栓 M6X25	Inner Hexagon Screw M6X25
4	01-291535-001	滚轮轴套	Distance Piece
5	01-291534-001	碗架滚轮	Sliding Roll
6	01-243284-001	套管	Sleeve Roller
7	01-291371-001	拨爪	Dog
8	00-602579-000	六角螺栓 M8X30	Hexagon Screw M8X30
9	01-242189-001	磁铁架组件 L-R	Magnet Braket Assy L-R
	01-242189-002	磁铁架组件 R-L	Magnet Braket Assy R-L
10	00-774714-001	门磁铁	Magnet
11	01-291513-001	磁开关支架	Braket
12	01-240288-001	磁开关总成	Magnet Switch
13	00-883838-001	磁开关压板	Switch Holder

Door and Insulation(Prewash)

隔热板组件（预洗）



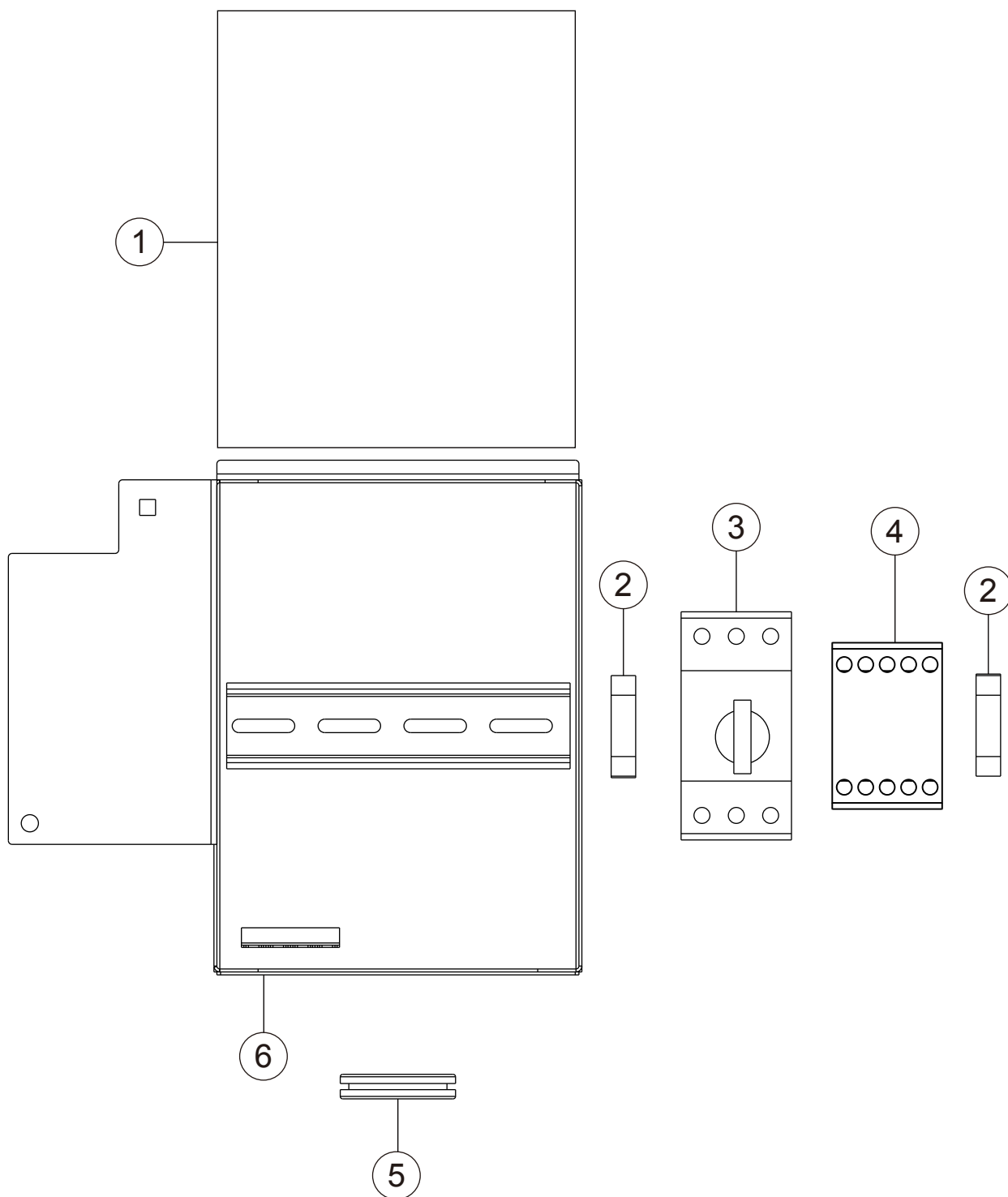
Door and Insulation(Prewash)

隔热板组件（预洗）

Illus.	Parts No.	Description	
序号	零件号	名称	
1	01-291317-002	后护板	Back Panel
2	01-291397-002	隔热顶板焊件	Ceiling Insulation
3	01-245281-001	卷簧轴	Axle
4	01-245278-004	卷簧组件	Door Spring
5	01-291426-001	挡汽块	Steam Baffle Door
6	00-325064-008	门滑块	Slide
7	01-245126-003	门导轨焊件	Profile
8	01-291321-002	门板焊件	Insulate Door
9	01-245127-001	磁铁架	Door stopper
10	00-774714-001	门磁铁	Magnet
11	01-245129-002	门把手焊件	Door Handle

Control box(Prewash)

控制盒（预洗）



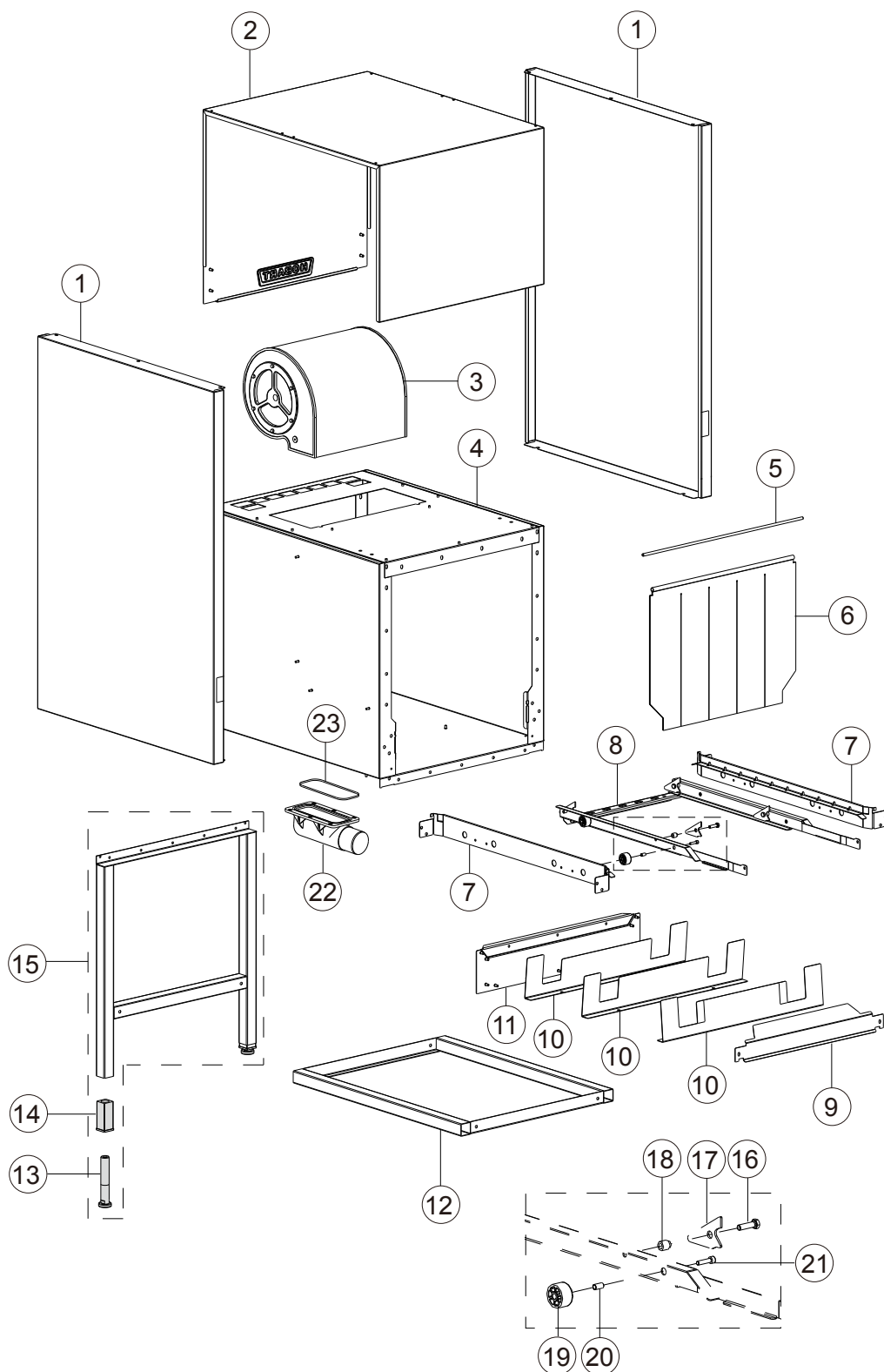
Control box(Prewash)

控制盒（预洗）

Illus.	Parts No.	Description	
序号	零件号	名称	
1	7159125-24	挡水帘	Waterscreen
2	WAGO249	挡块	Block
3	02-695523-009	电机保护开关 PKZMC-6.3 2Q5	Motor protection switch PKZMC-6.3 2Q5
	02-695523-010	电机保护开关 PKZMC-10 2Q5 (仅 220V/200V 机型)	Motor protection switch PKZMC-10 2Q5 (only for 220V/200V)
4	02-695521-001	接触器 DILM09 10C 2K3	Contactor DILM09 10C 2K3
	02-695521-005	接触器 DILM12 10C 2K3 (仅 220V/200V 机型)	Contactor DILM12 10C 2K3 (only for 220V/200V)
5	00-785565-005	过线胶圈	Cable bushing
6	7159160-5	控制盒焊件 L-R	Control box L-R
	7159160-6	控制盒焊件 R-L	Control box R-L

Dryer Module

烘干模块



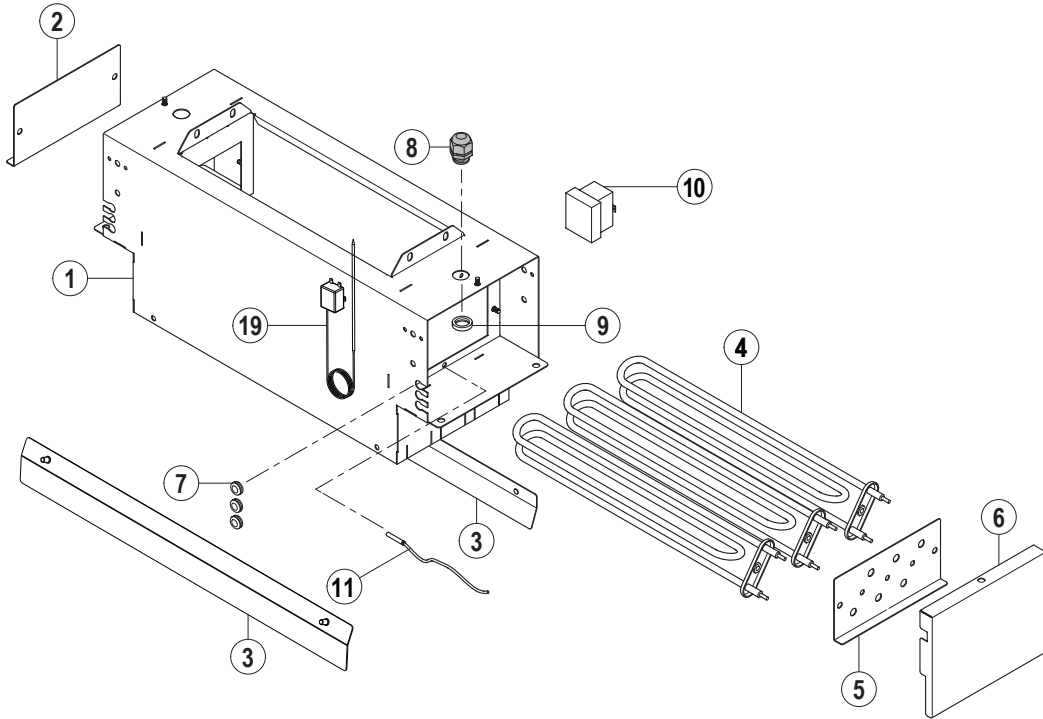
Dryer Module

烘干模块

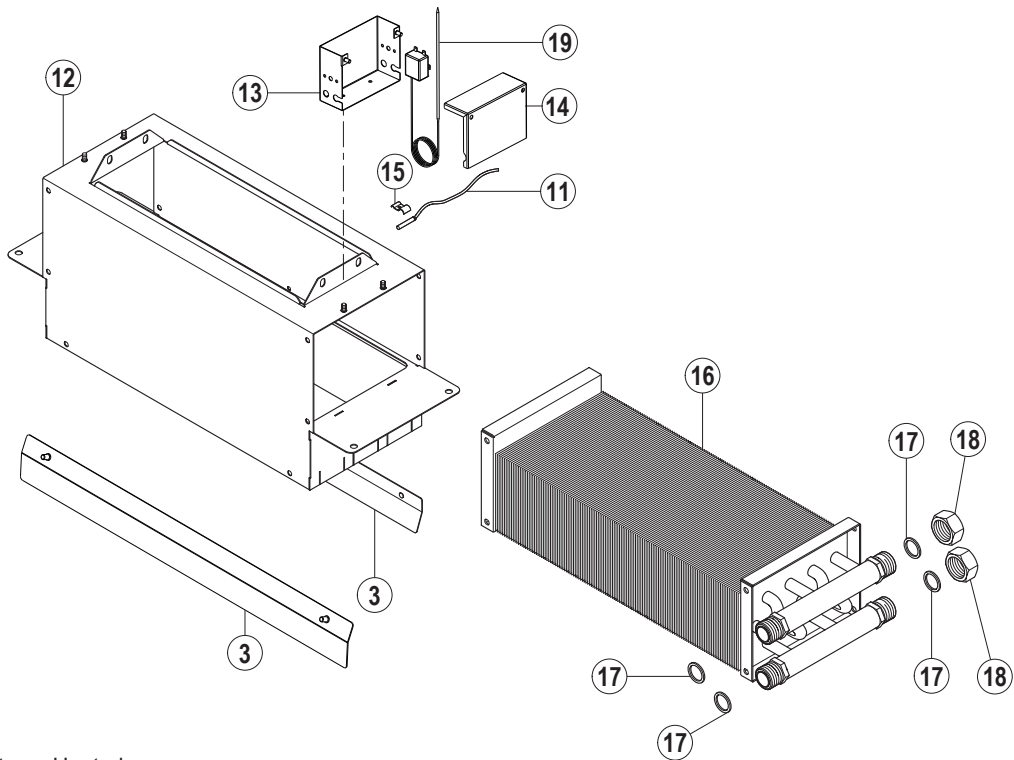
Illus. 序号	Parts No. 零件号	Description 名称	
1	01-291462-001	隔热板	Side Panel CDS
2	01-291453-001	风机外罩焊件	Hood Assy
3	00-897700-002	风机	Blower
4	01-291451-001	烘干洗室焊件	CDS Body
5	01-245396-007	门帘棍	Curtain Rod
6	01-291315-001	长门帘	Curtain
7	01-291368-005	导轨	Tray Guide
8	01-291375-005	碗架焊件	Transport Assy
9	01-291461-001	回水板	Water Deflector
10	01-291713-001	气流反射板	Air Deflector
11	01-291429-002	水箱端板焊件	Table Plate Assy
12	00-378747-186	支腿联接架焊件	Root Folder
13	00-325007-001	地脚	Foot Screw-in Part
14	00-325008-001	地脚座	Kit Adjustable Fin
15	00-734997-001	烘干水箱支腿焊件	Root Folder
16	00-602579-000	六角螺栓 M8X30	Hexagon Screw M8X30
17	01-291371-001	拨爪	Dog
18	01-243284-001	套管	Sleeve Roller
19	01-291534-001	碗架滚轮	Sliding Roll
20	01-291535-001	滚轮轴套	Sleeve Crank
21	00-603026-000	内六角螺栓 M6X25	Inner Hexagon Screw
22	00-325529-1	排水盒	Drainage
23	276903-35	排水盒胶圈	O Ring 103X3

Dryer Heating

烘干加热



Electrically Heated



Steam Heated

Dryer Heating

烘干加热

Illus.	Parts No.	Description	
序号	零件号	名称	
1	01-291465-001	风口焊件	Blower Holder Assy
2	01-245214-004	电热管安装板	Holder Heating Elements
3	01-245557-005	吹风口挡流板焊件	Air Blade
4	02-229189-001	电热管 220V 1.5kW	Heating Element 220V 1.5kW
	02-229189-004	电热管 200V 1.5kW	Heating Element 200V 1.5kW
5	01-245554-002	电热管安装板焊件	Holder Heating Element
6	01-291463-001	盖板	Cover
7	00-227748-001	过线胶圈	Gland Cable
8	00-695661-003	线管接头	Gland Cable
9	00-695664-003	接头锁母	Screw Nut
10	00-378791-000	极限温控器	Safety Temp.-Limiter
11	00-775612-001	温控探头 (CCA-Smart)	Temperature Probe (for CCA-Smart)
12	01-291894-001	风口焊件	Blower Holder Assy
13	7159159-5	烘干电气盒焊件	Dryer Control Box Assy
14	7159159-2	盒盖	Cover
15	00-324157-000	压片	Plate
16	01-291895-001	蒸汽加热器	Steam Heat Exchanger
17	00-302574-014	密封垫圈	Seal
18	01-245605-001	盖母	Cover
19	743310	机械温控器 (仅用于 CCA-Easy)	Mechanical Thermostat (CCA-Easy)

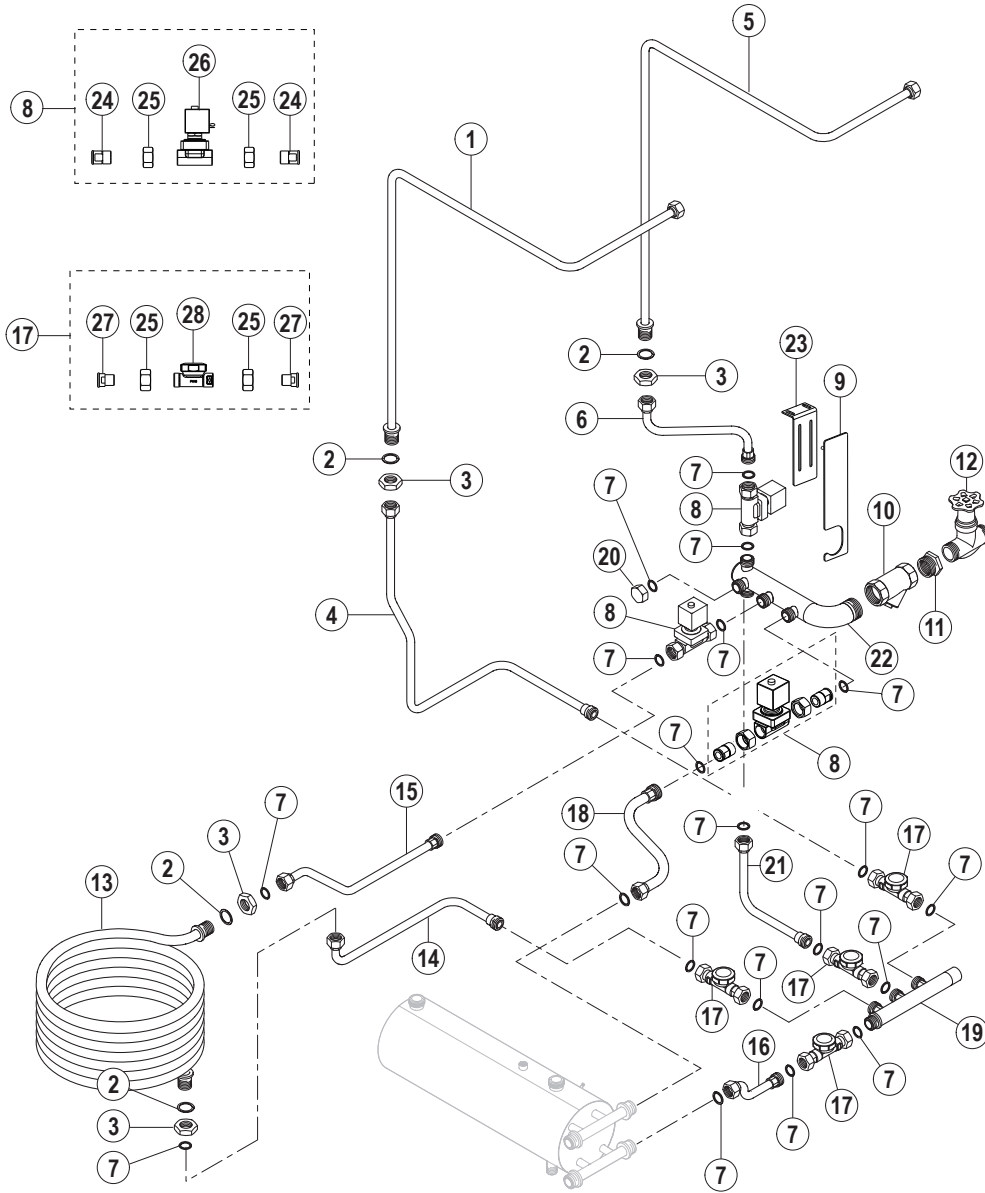
Control box(dryer)

控制盒（烘干）

Illus.	Parts No.	Description	
序号	零件号	名称	
1	7159158-2	烘干电气盒盖	Cover
2	WAGO249	挡块	Block
3	02-695523-006	马达保护开关 PKZMC-1.6 1Q8	Motor protect switch PKZMC-1.6 1Q8
	02-695523-007	马达保护开关 PKZMC-2.5 1Q8 (仅 220/200V 机型)	Motor protect switch PKZMC-2.5 1Q8 (only for 220V/200V)
4	743402-3	接触器 DILM07 10C 1K4	Contactora DILM07 10C 1K4
5	743402-3	接触器 DILM07 10C 1K5	Contactora DILM07 10C 1K5
6	7159158-5	烘干电气盒焊件 L-R	Control box, cpl. L-R
	7159158-6	烘干电气盒焊件 R-L	Control box, cpl. R-L
7	00-695661-005	锁紧护套 M32	Gland cable M32
8	00-695661-003	锁紧护套 M20	Gland cable M20
9	FE-024-58	锁紧护套	Gland cable
10	7159164-1	主开关 P1-25/V/SVB/N 2Q0	Main switch P1-25/V/SVB/N 2Q0
11	02-695524-001	辅助模块 NHI-E-11-PKZ0	Auxiliary contact NHI-E-11-PKZ0

Steam Piping

蒸汽管路



Steam Piping

蒸汽管路

Illus.	Parts No.	Description	
序号	零件号	名称	
1	01-291891-001	蒸汽出气管 (烘干) L-R	Steam Outlet Pipe L-R
	01-291891-003	蒸汽出气管 (烘干) R-L	Steam Outlet Pipe R-L
2	00-300084-010	密封垫圈	Seal
3	00-609698-000	锁母	Nut
4	01-291919-001	冷凝管焊件 (烘干) L-R	Condenser Pipe Assy L-R
	01-291932-001	冷凝管焊件 (烘干) R-L	Condenser Pipe Assy R-L
5	01-291891-002	蒸汽进气管 (烘干) L-R	Steam Inlet Pipe L-R
	01-291891-004	蒸汽进气管 (烘干) R-L	Steam Inlet Pipe R-L
6	01-291907-001	蒸汽进气管	Steam Inlet Pipe
7	00-302574-014	密封垫圈	Seal
8	01-245593-001	蒸汽电磁阀组件 1 - 3,5 bar	Solenoid Assy 1 - 3,5 bar
9	7159161-3	进气管组件支架焊件	Pipe Assy Braket
10	00-774429-001	过滤器	Strainer
11	00-609276-000	补芯	Bushing
12	00-165829-102	截门	Shut off Valve
13	7159149-2	蒸汽水箱盘管焊件 CCA	Steam Coil Assy CCA
14	7159150-2	CCA 冷凝管焊件 (水箱) R-L	Condenser Pipe Assy R-L(Water Tank)
	7159150-4	CCA 冷凝管焊件 (水箱) L-R	Condenser Pipe Assy L-R(Water Tank)
15	7159148-2	进气管焊件 (水箱)	Inlet Pipe Assy (Water Tank)
16	01-291915-001	冷凝管焊件 (升温箱)	Condenser Pipe Assy (Booster)
17	01-245603-002	疏水器组件	Steam Trap Assy
18	01-291899-001	进气管焊件 (升温箱)	Inlet Pipe (Booster)
19	01-291912-001	冷凝水排水焊件	Outlet Pipe
20	01-245605-001	盖母	Cover Nut
21	01-291909-001	冷凝管焊件	Condensate Pipe
22	01-291902-001	进气管焊件	Steam Inlet Pipe
23	7159161-2	进气管组件支架	Pipe Assy Braket
24	01-245594-004	接头	Nipple
25	01-245567-001	锁母	Nut
26	00-869493-001	电磁阀	Magnetic Valve
27	01-245596-001	接头	Nipple
28	00-774989-001	疏水器	Steam Trap

Steam Piping

蒸汽管路

Illus.	Parts No.	Description	
序号	零件号	名称	
1	01-291891-001 01-291891-003	蒸汽出气管 (烘干) L-R 蒸汽出气管 (烘干) R-L	Steam Outlet Pipe L-R Steam Outlet Pipe R-L
2	00-300084-010	密封垫圈	Seal
3	00-609698-000	锁母	Nut
4	01-291919-001 01-291932-001	冷凝管焊件 (烘干) L-R 冷凝管焊件 (烘干) R-L	Condenser Pipe Assy L-R Condenser Pipe Assy R-L
5	01-291891-002 01-291891-004	蒸汽进气管 (烘干) L-R 蒸汽进气管 (烘干) R-L	Steam Inlet Pipe L-R Steam Inlet Pipe R-L
6	01-291907-001	蒸汽进气管	Steam Inlet Pipe
7	00-302574-014	密封垫圈	Seal
8	01-245593-001	蒸汽电磁阀组件 1 - 3,5 bar	Solenoid Assy 1 - 3,5 bar
9	7159161-3	进气管组件支架焊件	Pipe Assy Braket
10	00-774429-001	过滤器	Strainer
11	7159149-2	蒸汽水箱盘管焊件 CCA	Steam Coil Assy CCA
12	7159150-2 7159150-4	CCA 冷凝管焊件 (水箱) R-L CCA 冷凝管焊件 (水箱) L-R	Condenser Pipe Assy R-L(Water Tank) Condenser Pipe Assy L-R(Water Tank)
13	7159148-2	进气管焊件 (水箱)	Inlet Pipe Assy (Water Tank)
14	01-291915-001	冷凝管焊件 (升温箱)	Condenser Pipe Assy (Booster)
15	01-245603-002	疏水器组件	Steam Trap Assy
16	01-291899-001	进气管焊件 (升温箱)	Inlet Pipe (Booster)
17	01-291912-001	冷凝水排水焊件	Outlet Pipe
18	01-245605-001	盖母	Cover Nut
19	01-291909-001	冷凝管焊件	Condensate Pipe
20	01-291902-001	进气管焊件	Steam Inlet Pipe
21	7159161-2	进气管组件支架	Pipe Assy Braket
22	01-245594-004	接头	Nipple
23	01-245567-001	锁母	Nut
24	00-869493-001	电磁阀	Magnetic Valve
25	01-245596-001	接头	Nipple
26	00-774989-001	疏水器	Steam Trap

Steam Piping

蒸汽管路

Illus.	Parts No.	Description	
序号	零件号	名称	
1	01-291891-001	蒸汽出气管 (烘干) L-R	Steam Outlet Pipe L-R
	01-291891-003	蒸汽出气管 (烘干) R-L	Steam Outlet Pipe R-L
2	00-300084-010	密封垫圈	Seal
3	00-609698-000	锁母	Nut
4	01-291919-001	冷凝管焊件 (烘干) L-R	Condenser Pipe Assy L-R
	01-291932-001	冷凝管焊件 (烘干) R-L	Condenser Pipe Assy R-L
5	01-291891-002	蒸汽进气管 (烘干) L-R	Steam Inlet Pipe L-R
	01-291891-004	蒸汽进气管 (烘干) R-L	Steam Inlet Pipe R-L
6	01-291907-001	蒸汽进气管	Steam Inlet Pipe
7	00-302574-014	密封垫圈	Seal
8	01-245593-001	蒸汽电磁阀组件 1 - 3,5 bar	Solenoid Assy 1 - 3,5 bar
9	7159161-3	进气管组件支架焊件	Pipe Assy Bracket
10	00-774429-001	过滤器	Strainer
11	7159149-2	蒸汽水箱盘管焊件 CCA	Steam Coil Assy CCA
12	7159150-2	CCA 冷凝管焊件 (水箱) R-L	Condenser Pipe Assy R-L(Water Tank)
	7159150-4	CCA 冷凝管焊件 (水箱) L-R	Condenser Pipe Assy L-R(Water Tank)
13	7159148-2	进气管焊件 (水箱)	Inlet Pipe Assy (Water Tank)
14	01-291915-001	冷凝管焊件 (升温箱)	Condenser Pipe Assy (Booster)
15	01-245603-002	疏水器组件	Steam Trap Assy
16	01-291899-001	进气管焊件 (升温箱)	Inlet Pipe (Booster)
17	01-291912-001	冷凝水排水焊件	Outlet Pipe
18	01-245605-001	盖母	Cover Nut
19	01-291909-001	冷凝管焊件	Condensate Pipe
20	01-291902-001	进气管焊件	Steam Inlet Pipe
21	7159161-2	进气管组件支架	Pipe Assy Bracket
22	01-245594-004	接头	Nipple
23	01-245567-001	锁母	Nut
24	00-869493-001	电磁阀	Magnetic Valve
25	01-245596-001	接头	Nipple
26	00-774989-001	疏水器	Steam Trap
27	7159174-2	蒸汽挡板焊件	Steam Baffle
28	7159174-5	支架	Bracket
29	7159174-7	支架焊件	Bracket