



CATALOG OF REPLACEMENT PARTS



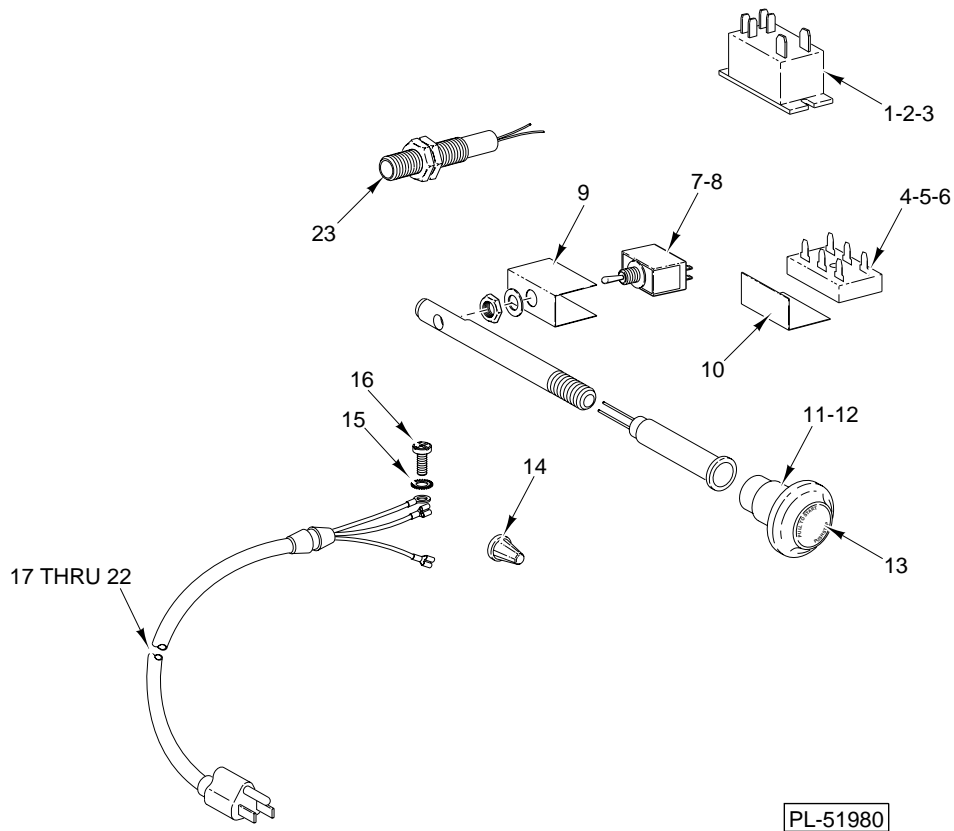
SLICERS

| | |
|--------|-----------|
| 1612E | ML-104546 |
| 1712E | ML-104547 |
| 1712RE | ML-104548 |

**THIS MANUAL REPLACES AND SHOULD
BE USED INSTEAD OF FORM 18987**

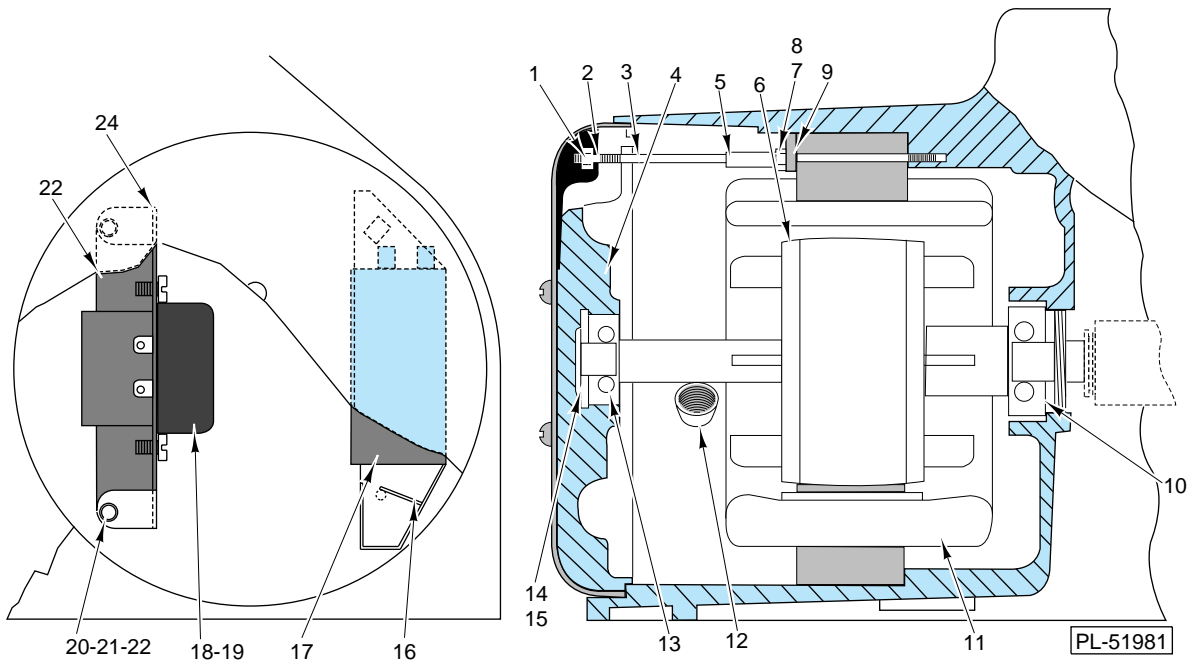
PRIOR MLS COVERED IN THIS MANUAL:

| | |
|--------|-----------|
| 1612E | ML-104029 |
| 1712E | ML-104030 |
| 1712RE | ML-104031 |



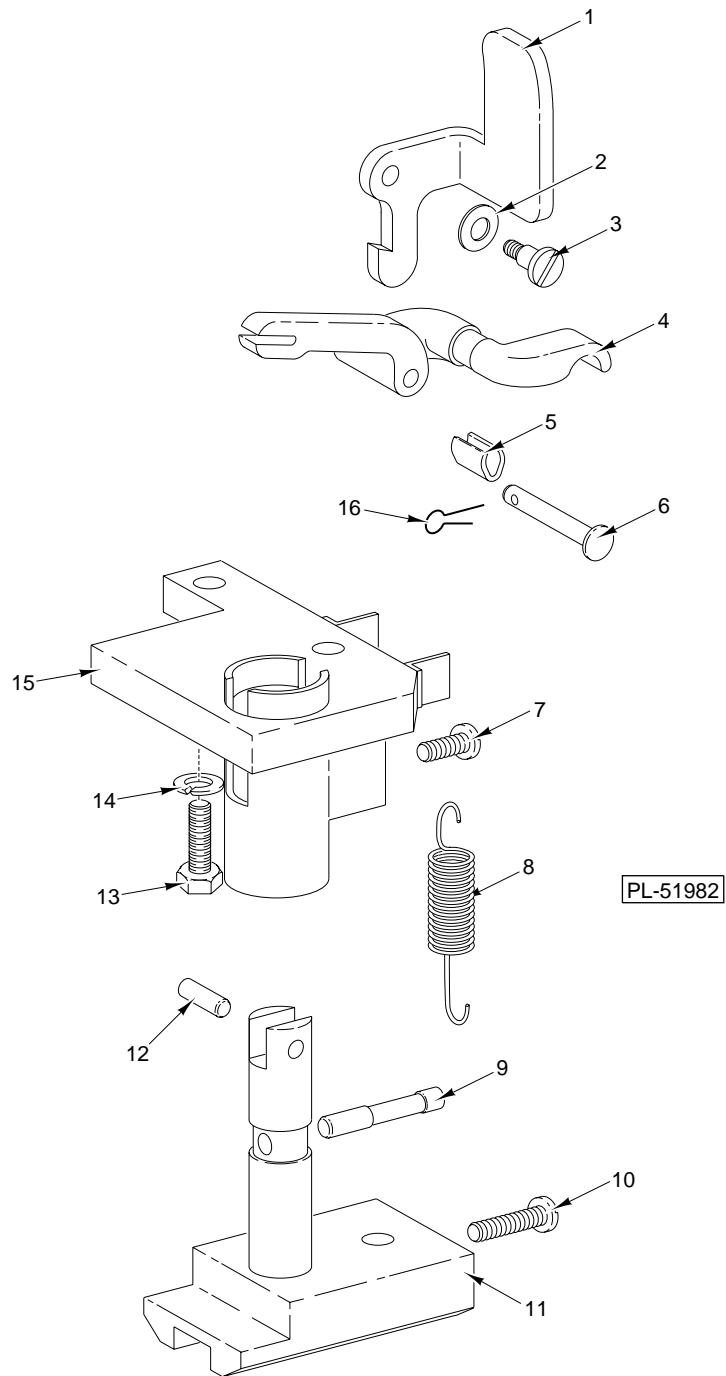
ELECTRICAL

| ILLUS. PL-51980 | PART NO. | NAME OF PART | AMT. |
|--------------------|-------------|---|------|
| 1 | 87714-42-1 | Relay (2 Pole)(Under 150 V.) | 1 |
| 2 | 87714-42-3 | Relay (2 Pole) (220 - 240 V.) | 1 |
| 3 | SD-12-34 | Self-Tapping Screw 8-32 x 5/16 Pan Hd., Type T | 2 |
| 4 | 87714-39-3 | Timer - Relay (Under 150 V.) | 1 |
| 5 | 87714-39-4 | Timer - Relay (200-250 V.) | 1 |
| 6 | SD-37-95 | Self-Tapping Screw 10-24 x 1 Phil. Pan Hd., Type TT | 1 |
| 7 | 120388 | Switch & Label Assy. | 1 |
| 8 | 87711-148-1 | Switch (With Nuts) | 1 |
| 9 | 437657 | Switch - Mylar | 1 |
| 10 | 438130 | Insulator - Switch | 1 |
| 11 | 438294-1 | Disc & Lighted Knob Assy. (Under 150 V.) | 1 |
| 12 | 438294-2 | Disc & Lighted Knob Assy. (200 - 250 V.) | 1 |
| 13 | 76902 | Disc - Insert | 1 |
| 14 | FE-6-29 | Wire Nut (14-22 Ga.) | 3 |
| 15 | WL-10-1 | Lockwasher 8 External Shakeproof | 1 |
| 16 | SD-24-13 | Self-Tapping Screw 8-32 x 3/8 Pan Hd., Type TT | 1 |
| 17 | 123856-1 | Cord & Plug Assy. (Under 150 V.) | 1 |
| 18 | 123856-2 | Cord & Plug Assy. (200-250 V.) | 1 |
| 19 | 123858 | Cord Assy. (I.E.C.) | 1 |
| 20 | RR-8-13 | Retaining Ring (Use with items 17 & 18) | 1 |
| 21 | WS-5-36 | Washer (Use with item 19) | 2 |
| 22 | FE-6-32 | Strain Relief (Use with item 19) | 2 |
| 23 | 87711-243-1 | Sensor (Home Position And/Or Auto-Shut-off) | AR |



MOTOR PARTS

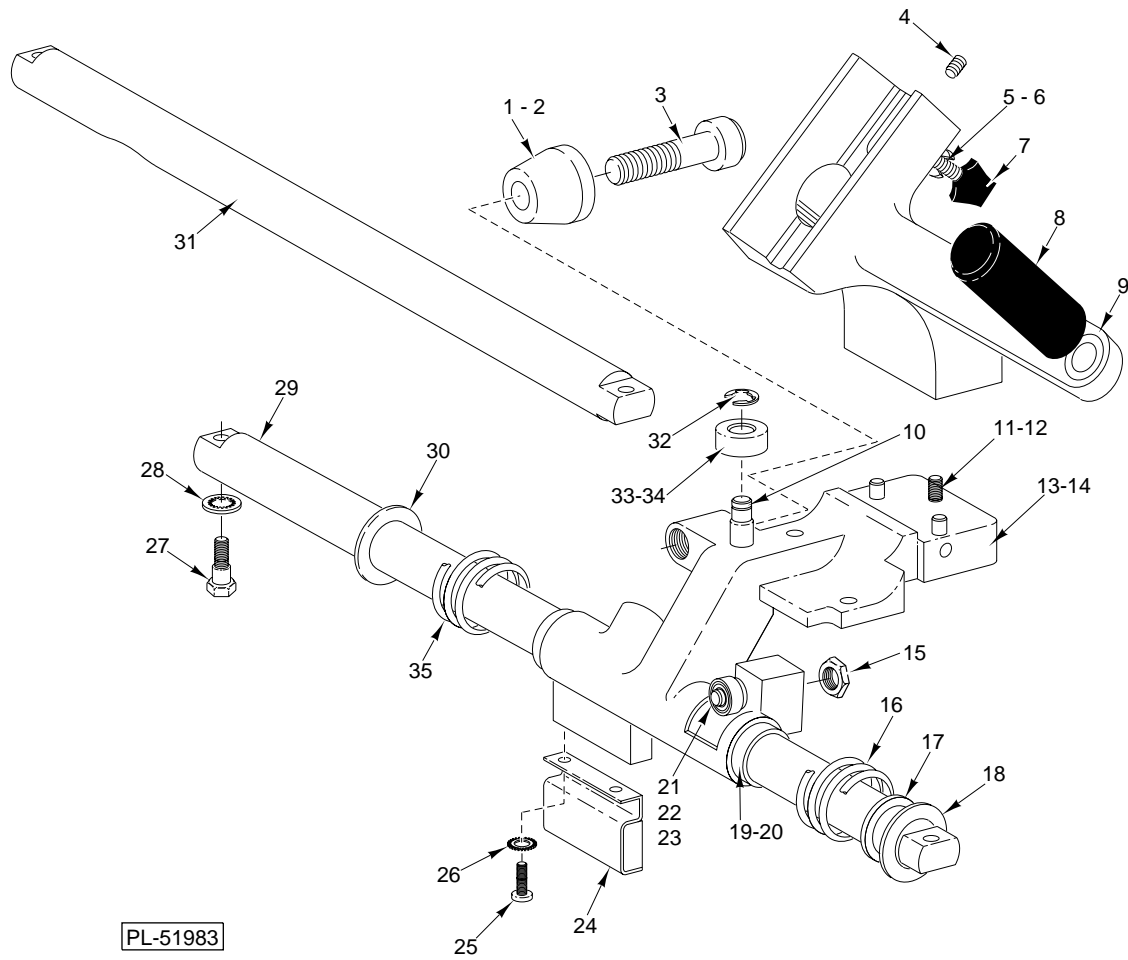
| ILLUS. PL-51981 | PART NO. | NAME OF PART | AMT. |
|--------------------|-------------|---|------|
| | 1 | NS-9-12 Mach. Nut 8-32 Hex | 4 |
| | 2 | WL-7-6 Lockwasher 8 External Shakeproof | 4 |
| | 3 | 120048 Stud - Stator | 4 |
| | 4 | 110293 Bracket - Bearing | 1 |
| | 5 | 103661-17 Tubing - Insulator 3/4 lg | 2 |
| | 6 | 274761 Rotor | 1 |
| | 7 | NS-9-12 Mach. Nut 8-32 Hex | 4 |
| | 8 | WS-2-15 Washer | 4 |
| | 9 | 293454 Retainer - Stator | 4 |
| | 10 | BB-15-41 Ball Bearing - N.D. #Z993L04 | 1 |
| | 11 | 271639 Stator Assy. (All Voltages) | 1 |
| | 12 | 70418 Bushing - Motor Leads | 1 |
| | 13 | BB-18-12 Ball Bearing - Fafnir #P201KDD | 1 |
| | 14 | 21046-2 Washer - Bumper (1/32 Thk.) | 2 |
| | 15 | SL-2-2 Spring - Loading - N.D. #S-12 | 1 |
| | 16 | 278280 Retainer - Capacitor | 1 |
| | 17 | 70487-21 Capacitor (50% Hz.) | 1 |
| | 18 | 271612-2 Switch - Electronic Start (50% Hz.) | 1 |
| | 19 | SD-24-13 Self-Tapping Screw 8-32 x 3/8 Pan Hd., Type TT | 2 |
| | 20 | 103661-15 Tubing - Insulator 1 1/2 lg | 1 |
| | 21 | WS-2-15 Washer | 2 |
| | 22 | NS-9-12 Mach. Nut 8-32 Hex | 2 |
| | 23 | 271614 Insulator - Motor Switch | 1 |
| | 24 | 271613 Plate - Motor Switch | 1 |



**ACTUATING MECHANISM
(1712E & 1712RE)**

**ACTUATING MECHANISM
(1712E & 1712RE)**

| ILLUS. PL-51982 | PART NO. | NAME OF PART | AMT. |
|--------------------|-------------|--------------------------------------|------|
| 1 | 70240 | Clip - Locking | 1 |
| 2 | WS-2-43 | Washer | 1 |
| 3 | 70351 | Screw - Special | 1 |
| 4 | 70233-2 | Lever - Actuating Mech | 1 |
| 5 | 70245 | Clip - Lever Wear | 1 |
| 6 | 70297 | Pin - Hinge | 1 |
| 7 | SC-60-21 | Mach. Screw 10-24 x 1/4 Rd. Hd. | 1 |
| 8 | 70399 | Spring - Actuating Mech | 1 |
| 9 | 118161 | Dowel - Yoke & Shaft Locating | 1 |
| 10 | SC-60-20 | Mach. Screw 10-24 x 1 Rd. Hd. | 1 |
| 11 | 70266 | Yoke & Shaft Assy | 1 |
| 12 | 11800-137 | Dowel | 1 |
| 13 | SC-62-81 | Cap Screw 5/16-18 x 7/8 Hex Hd. | 2 |
| 14 | WL-3-44 | Lockwasher 5/16 Medium | 2 |
| 15 | 83424 | Base and Brg. Assy | 1 |
| 16 | PC-3-23 | Cotter Pin 1/16 x 1/2 | 1 |

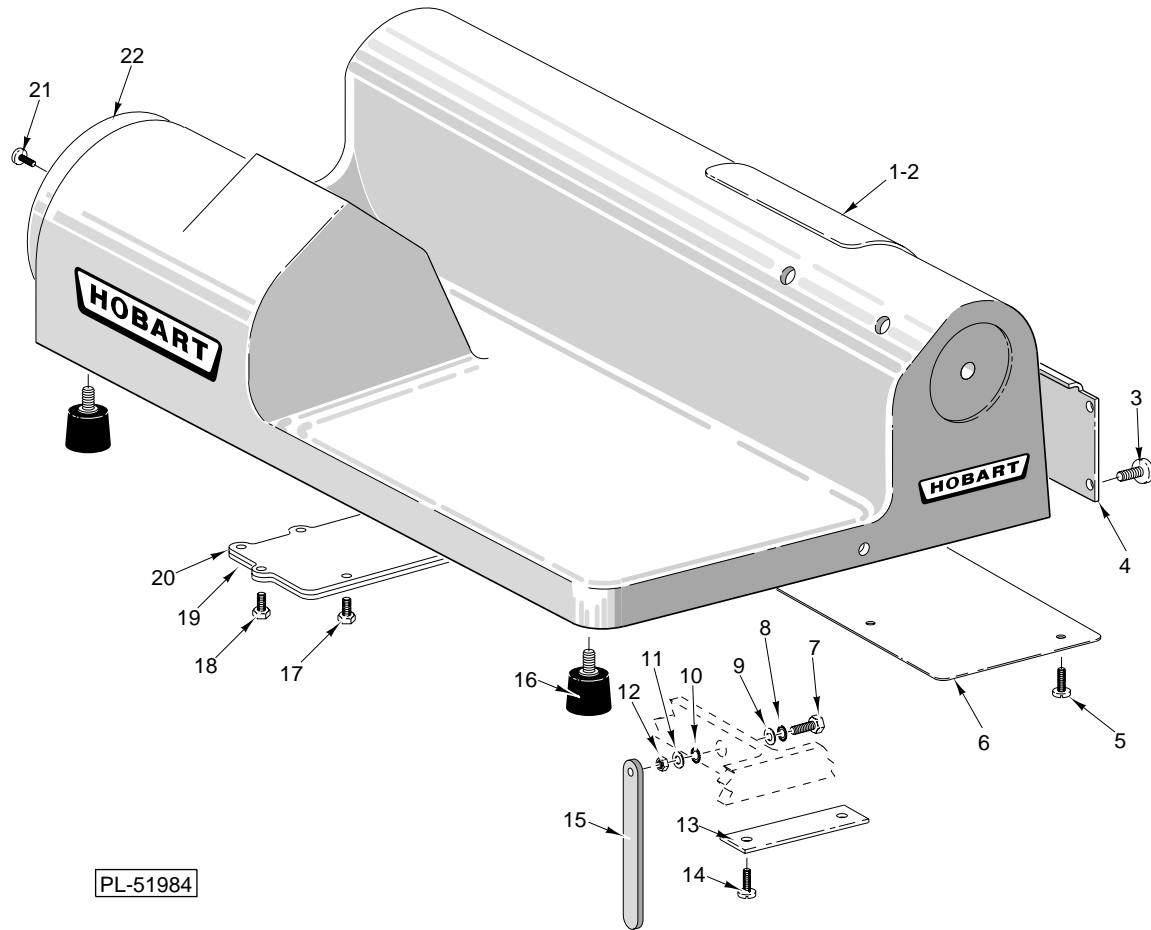


PL-51983

**SLIDE ROD & BEARING CARRIER
ASSEMBLY**

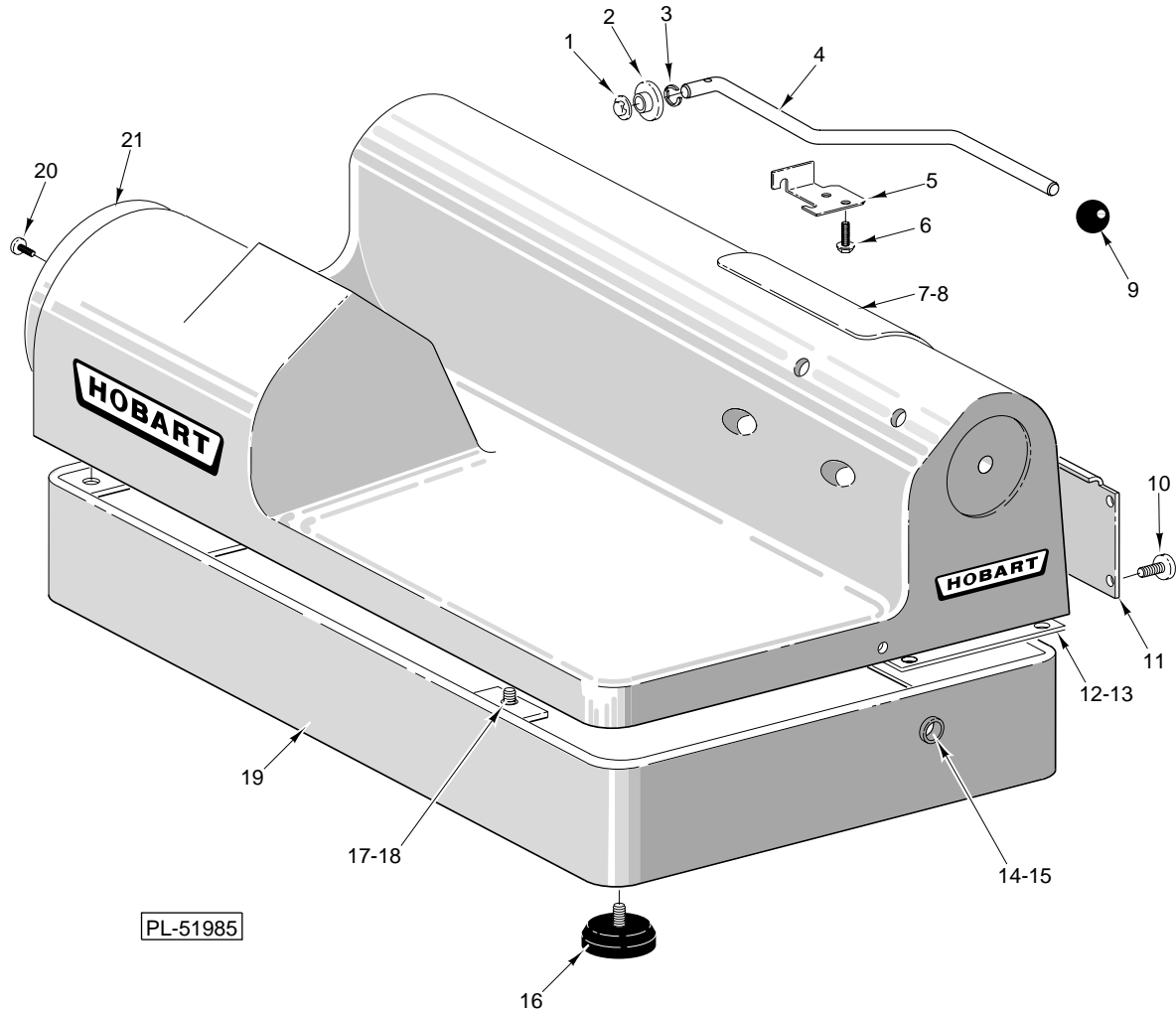
SLIDE ROD & BEARING CARRIER ASSEMBLY

| ILLUS. PL-51983 | PART NO. | NAME OF PART | AMT. |
|--------------------|-------------|--|------|
| 1 | 10928-2 | Nut - Special | 1 |
| 2 | 274899 | Roller - Horizontal | 1 |
| 3 | 274898 | Stud - Horizontal Roller | 1 |
| 4 | SC-118-52 | Set Screw ¼-20 x ½ Hdls. Cup Pt. | 1 |
| 5 | 107364-2 | Washer - Belleville | 2 |
| 6 | RR-11-60 | Retaining Ring | 1 |
| 7 | 108197-5 | Thumb Screw | 1 |
| 8 | 70194 | Handle - Gauge Plate | 1 |
| 9 | 88749-2 | Carriage Support & Plug Assy. (Incls. items 4 & 8) | 1 |
| 10 | 274896 | Stud - Vertical Roller | 1 |
| 11 | SC-37-21 | Cap Screw ½-13 x 1 ½ Hex Hd. | 1 |
| 12 | WL-6-35 | Lockwasher ½ Light | 1 |
| 13 | 274925-2 | Carriage Bearing Sub Assy. | 1 |
| 14 | 274895 | Wick - Carriage Bearing | 1 |
| 15 | 10928-2 | Nut - Special | 1 |
| 16 | 274903 | Spring - Carriage Bearing | 1 |
| 17 | 435707 | Washer - Bumper (Rubber) | 1 |
| 18 | 435708 | Washer - Backup (SST) | 2 |
| 19 | 437610 | Bushing - Nyliner (Incls. item 20) | 2 |
| 20 | 437612 | Liner - Bushing | 2 |
| 21 | 109870 | Stud - Eccentric | 1 |
| 22 | BB-4-11 | Ball Bearing - Hoover #626ZZ | 1 |
| 23 | RR-9-15 | Retaining Ring | 1 |
| 24 | 438701 | Magnet Housing Assy. | 1 |
| 25 | SC-25-26 | Mach. Screw 8-32 x ¾ Bdg. Hd. | 2 |
| 26 | WL-13-8 | Lockwasher 8 Internal Shakeproof | 2 |
| 27 | SD-24-48 | Self-Tapping Screw ¼-18 x 1 ¾ Hex Washer Hd. "Taptite" | 4 |
| 28 | WL-7-20 | Lockwasher ⅝ Ext. "Shakeproof" | 4 |
| 29 | 123686-1 | Slide Rod - Lower | 1 |
| 30 | 435707 | Washer - Bumper (Rubber) | 1 |
| 31 | 123686-2 | Slide Rod - Upper | 1 |
| 32 | RR-9-15 | Retaining Ring | 1 |
| 33 | 274897 | Roller - Vertical | 1 |
| 34 | BB-4-11 | Ball Bearing - Hoover #626ZZ | 1 |
| 35 | 274903 | Spring - Carriage Bearing | 1 |
| | 86262 | Eccentric Stud, Bearing & Nut Assy. (Incls. items 15, 21, 22 & 23) | 1 |



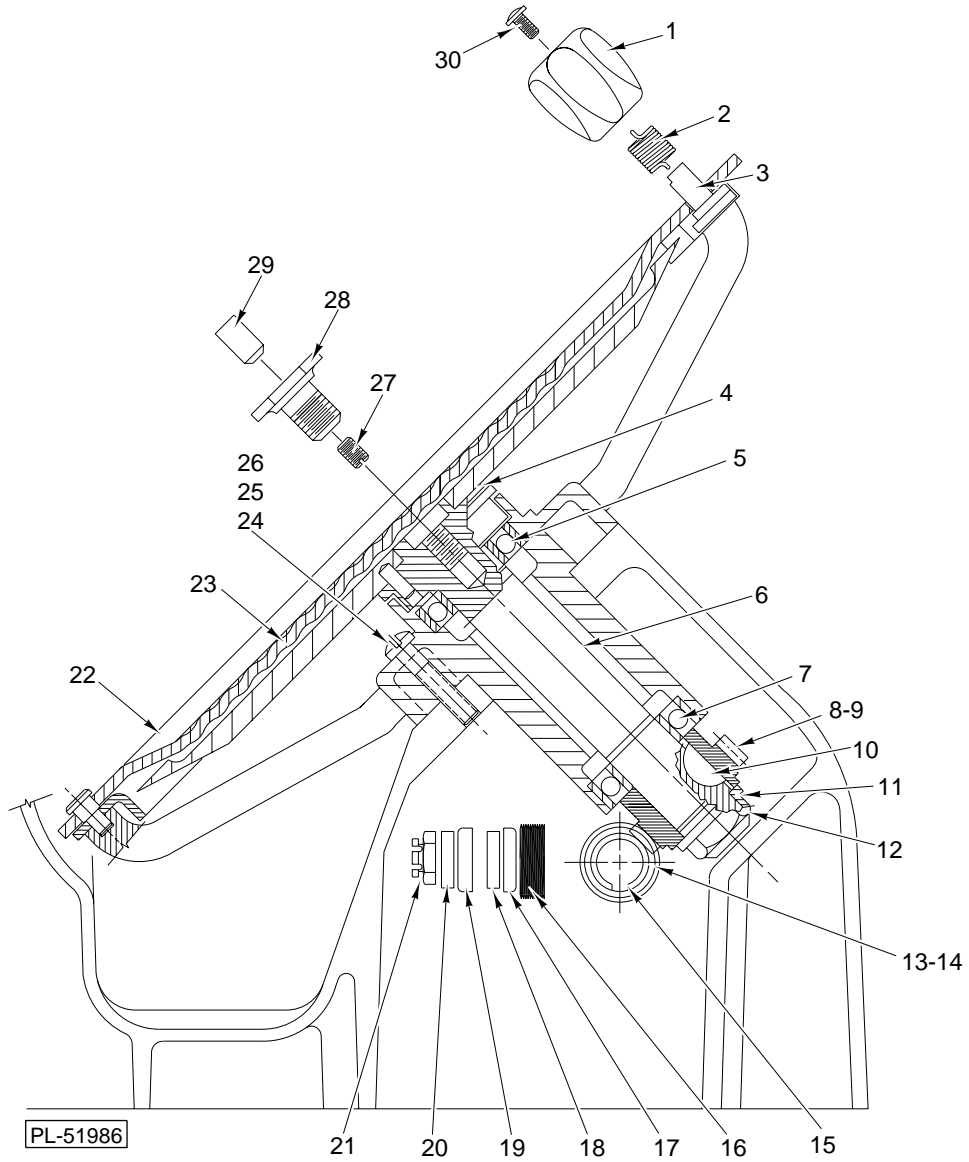
BASE 1612E

| ILLUS. PL-51984 | PART NO. | NAME OF PART | AMT. |
|--------------------|-------------|---|------|
| 1 | 437479 | Access Cover - Slide Rods | 1 |
| 2 | SD-37-77 | Self-Tapping Screw 6-32 x 3/8 Truss Hd., Type T | 4 |
| 3 | SC-10-32 | Mach. Screw 8-32 x 3/8 Truss Hd. | 4 |
| 4 | 274902 | Panel - Side | 1 |
| 5 | SD-24-13 | Self-Tapping Screw 8-32 x 3/8 Pan Hd., Type TT | 2 |
| 6 | 437655 | Cover - Electronics | 1 |
| 7 | SC-41-2 | Cap Screw 1/4-20 x 1 Hex Hd. | 1 |
| 8 | WL-14-10 | Lockwasher 1/4 Ext. "Shakeproof" | 1 |
| 9 | WS-22-6 | Washer | 1 |
| 10 | WL-14-10 | Lockwasher 1/4 Ext. "Shakeproof" | 1 |
| 11 | WS-22-6 | Washer | 1 |
| 12 | NS-15-1 | Full Nut 1/4-20 Hex | 2 |
| 13 | 437866 | Retainer - Leg | 1 |
| 14 | SD-24-13 | Self-Tapping Screw 8-32 x 3/8 Pan Hd., Type TT | 2 |
| 15 | 437865 | Leg - Cleaning | 1 |
| 16 | 18682-1 | Bumper | 4 |
| 17 | SD-24-5 | Self-Tapping Screw 5/16-18 x 5/8 Hex Hd., Type TT | 2 |
| 18 | SD-24-4 | Self-Tapping Screw 10-24 x 5/8 Hex Hd., Type TT | 5 |
| 19 | 116670 | Cover - Gear Case | 1 |
| 20 | 117710 | Gasket - Gear Case Cover | 1 |
| 21 | SD-24-19 | Self-Tapping Screw 8-32 x 3/8 Truss Hd., Type TT | 2 |
| 22 | 70238 | Cover - Bearing Bracket | 1 |



BASE 1712E/1712RE

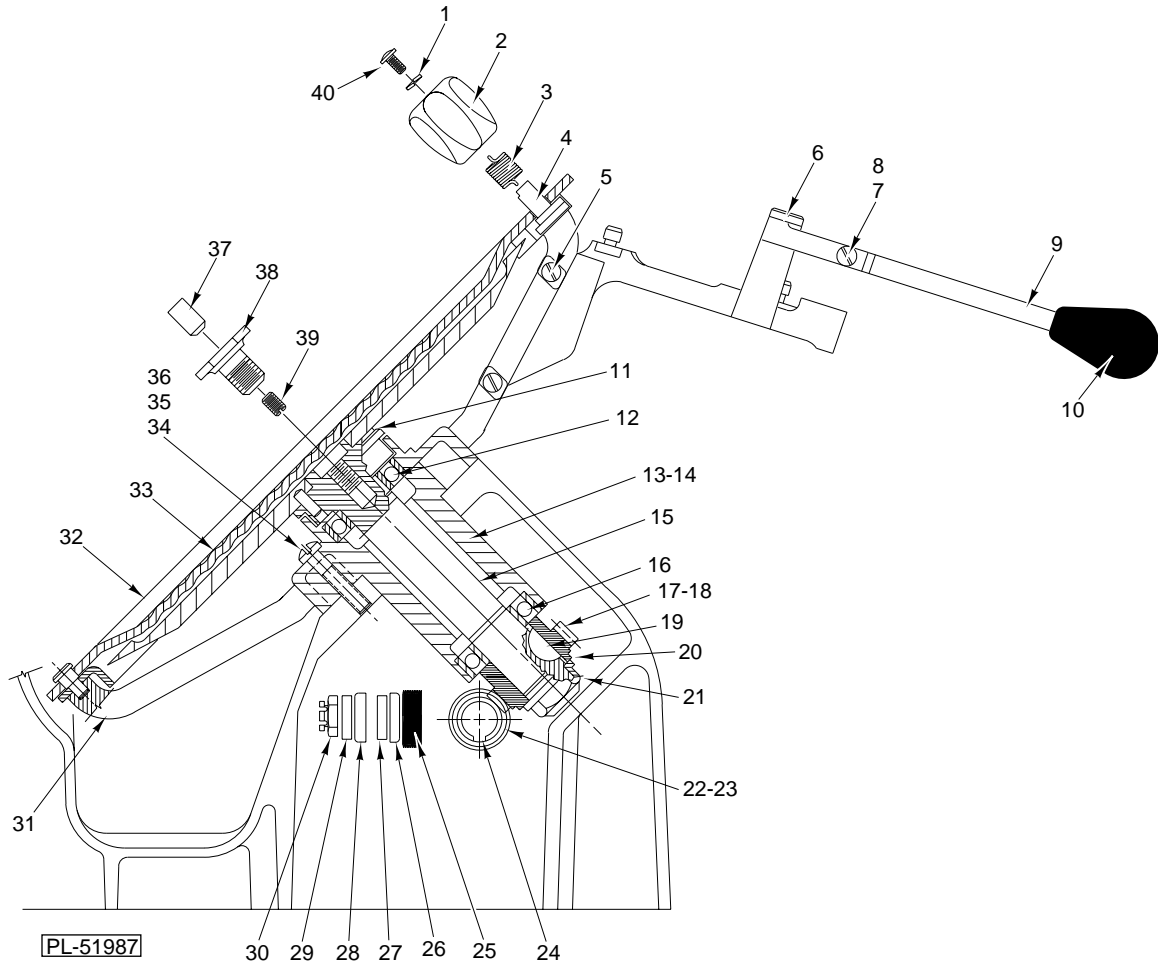
| ILLUS. PL-51985 | PART NO. | NAME OF PART | AMT. |
|--------------------|-------------|--|------|
| 1 | 106502 | Push Nut | 1 |
| 2 | 108001 | Foot - Lifting Lever | 1 |
| 3 | RR-9-10 | Retaining Ring | 1 |
| 4 | 106504 | Lever - Lifting | 1 |
| 5 | 121920 | Retainer - Lifting Lever | 1 |
| 6 | SD-9-16 | Self-Tapping Screw 1/4-20 x 3/4 Hex Hd., Type F | 2 |
| 7 | 437479 | Access Cover - Slide Rods | 1 |
| 8 | SD-37-77 | Self-Tapping Screw 6-32 x 3/8 Truss Hd., Type T | 4 |
| 9 | 106503 | Knob - Lifting Lever | 1 |
| 10 | SC-10-32 | Mach. Screw 8-32 x 3/8 Truss Hd. | 4 |
| 11 | 274902 | Panel - Side | 1 |
| 12 | 437655 | Cover - Electronics | 1 |
| 13 | SD-24-13 | Self-Tapping Screw 8-32 x 3/8 Pan Hd., Type TT | 7 |
| 14 | 290063 | Bushing - Shifter Sleeve | 1 |
| 15 | RR-10-13 | Retaining Ring | 1 |
| 16 | 83681 | Foot | 4 |
| 17 | SC-62-81 | Cap Screw 5/16-18 x 7/8 Hex Hd. | 4 |
| 18 | WL-3-44 | Lockwasher 3/16 Medium | 4 |
| 19 | 290038-1 | Sub-Base & Bushing Assy. (Incls. item 17) | 1 |
| 20 | SD-24-19 | Self-Tapping Screw 8-32 x 3/8 Truss Hd., Type TT | 2 |
| 21 | 70238 | Cover - Bearing Bracket | 1 |
| | 106505 | Lever & Foot Assy. (Incls. items 1 thru 4 & 9) | 1 |



KNIFE UNIT
(ML-104029, ML-104030 & ML-104031)

KNIFE ASSY.
(ML-104029, ML-104030, & ML-104031)

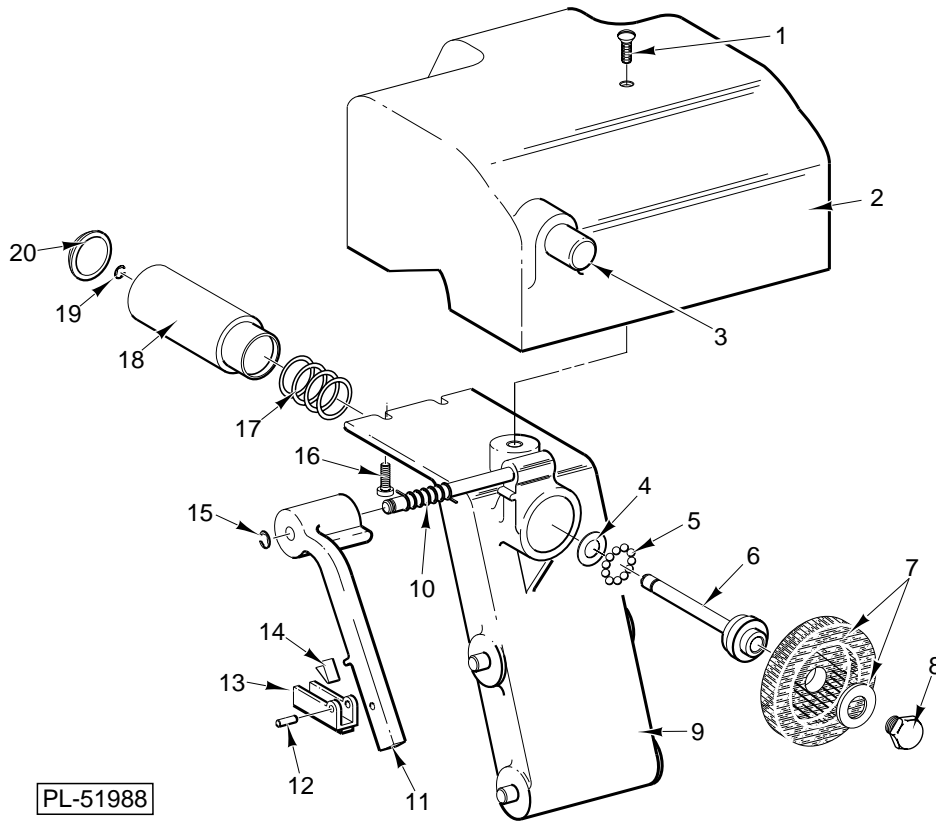
| ILLUS. PL-51986 | PART NO. | NAME OF PART | AMT. |
|--------------------|-------------|--|------|
| 1 | 437879 | Knob - Top Cover Locking | 1 |
| 2 | 437994 | Spring - Top Cover | 1 |
| 3 | 437880 | Stud - Top Cover Locking | 1 |
| 4 | 111154 | Ring - Knife Shaft | 1 |
| 5 | BB-15-8 | Ball Bearing MRC 105KSZZ-01-ST-A-92-C | 1 |
| 6 | 435785 | Knife Shaft & Dowel | 1 |
| 7 | BB-15-8 | Ball Bearing MRC 105KSZZ-01-ST-A-92-C | 1 |
| 8 | 274908-2 | Gear - Knife Shaft Worm (24T)(1712E & 1712RE) | 1 |
| 9 | 274908-1 | Gear - Knife Shaft Worm (25T)(1612E) | 1 |
| 10 | KW-3-10 | Key - 606 Woodruff | 1 |
| 11 | WS-11-46 | Washer | 1 |
| 12 | NS-46-29 | Lock Nut 3/4-16 Flexlox | 1 |
| 13 | 437575 | Worm (5T)(1712E & 1712RE)(Use with item 8) | 1 |
| 14 | 294193 | Worm (4T)(1612E)(Use with item 9) | 1 |
| 15 | 12430-3 | Key 1/8 Sq. x 1 1/8 Lg. | 1 |
| 16 | 70239 | Conveyor - Oil | 1 |
| 17 | 274759 | Retainer - Washer | 1 |
| 18 | 274760-1 | Washer - Shock (4 1/4 I.D.) | 1 |
| 19 | WS-7-50 | Washer | 1 |
| 20 | 437113 | Washer - Special | 1 |
| 21 | NS-32-23 | Lock Nut 7/16-20 "Flexloc" | 1 |
| 22 | 437422 | Top Knife Cover Assy. (Packaged) | 1 |
| 23 | 439870-1 | Knife - Service | 1 |
| 24 | SD-37-44 | Self-Tapping Screw 1/4-20 x 1 5/8 Pan Hd., Type TT | 4 |
| 25 | WS-22-8 | Washer | 2 |
| 26 | 435401 | Spacer - Deflector Mounting | 2 |
| 27 | SC-64-4 | Set Screw 1/4-28 x 3/8 Hdls., Flat Pt. "Nylok" | 1 |
| 28 | 73356-2 | Screw - Knife (Incls. items 27 & 29) | 1 |
| 29 | 73265 | Plug - Plate Thrust | 1 |
| 30 | SC-122-53 | Mach. Screw 4-40 x 5/8 Phil. Pan Hd. | 1 |



KNIFE UNIT
(ML-104546, ML-104547 & ML-104548)

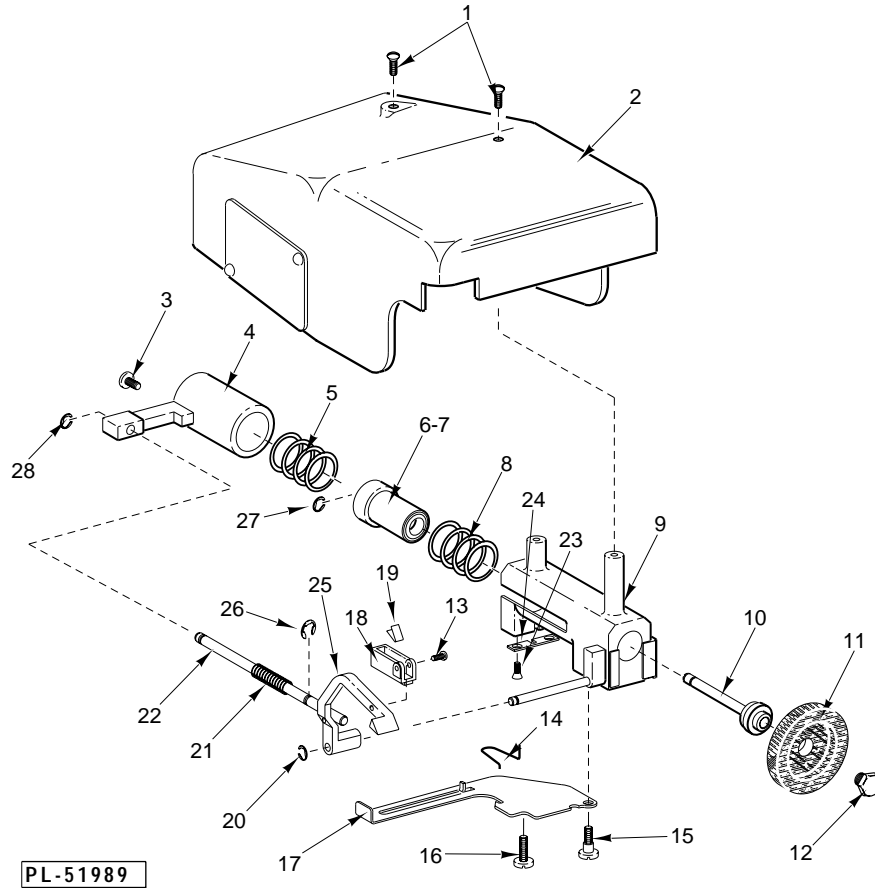
**KNIFE ASSY.
(ML-104546, ML-104547 & ML-104548)**

| ILLUS. PL-51987 | PART NO. | NAME OF PART | AMT. |
|--------------------|-------------|---|------|
| 1 | WL-3-12 | Lockwasher 8 Medium | 1 |
| 2 | 437879 | Knob - Top Cover Locking | 1 |
| 3 | 437994 | Spring - Top Cover | 1 |
| 4 | 437880 | Stud - Top Cover Locking | 1 |
| 5 | SC-119-55 | Mach. Screw 10-24 x 1 Pan Hd. | 4 |
| 6 | 438455 | Shoulder Bolt | 1 |
| 7 | 438448 | Cam Roller & Rivet Assy. | 1 |
| 8 | SC-122-86 | Mach. Screw "Special" 6-32 x 5/8 Pan Hd. | 1 |
| 9 | 438423 | Handle - Cam | 4 |
| 10 | 438420 | Knob | 2 |
| 11 | 111154 | Ring - Knife Shaft | 1 |
| 12 | BB-15-8 | Ball Bearing MRC 105KSZZ-01-ST-A-92-C | 1 |
| 13 | 439697-3 | Knife Shaft Guard Ring & Hub (1612E)(Incls. items 12, 16, 18 thru 21 & 31) | 1 |
| 14 | 439697-4 | Knife Shaft Guard Ring & Hub (1712E/1712RE)(Incls. items 12, 16, 17, 19, 20, 21 & 31) | 1 |
| 15 | 435785 | Knife Shaft & Dowel | 1 |
| 16 | BB-15-8 | Ball Bearing MRC 105KSZZ-01-ST-A-92-C | 1 |
| 17 | 274908-2 | Gear - Knife Shaft Worm (24T)(1712E & 1712RE) | 1 |
| 18 | 274908-1 | Gear - Knife Shaft Worm (25T)(1612E) | 1 |
| 19 | KW-3-10 | Key - 606 Woodruff | 1 |
| 20 | WS-11-46 | Washer | 1 |
| 21 | NS-46-29 | Lock Nut 3/4-16 Flexlox | 1 |
| 22 | 437575 | Worm (5T)(1712E & 1712RE)(Use with item 13) | 1 |
| 23 | 294193 | Worm (4T)(1612E)(Use with item 14) | 1 |
| 24 | 12430-3 | Key 1/8 Sq. x 1 1/8 Lg. | 1 |
| 25 | 70239 | Conveyor - Oil | 1 |
| 26 | 274759 | Retainer - Washer | 1 |
| 27 | 274760-1 | Washer - Shock (4 1/64 I.D.) | 1 |
| 28 | WS-7-50 | Washer | 1 |
| 29 | 437113 | Washer - Special | 1 |
| 30 | NS-32-23 | Lock Nut 7/16-20 "Flexloc" | 1 |
| 31 | 439696-2 | Pin & Ring Guard Assy. (Incls. items 5 thru 10) | 1 |
| 32 | 437422 | Top Knife Cover Assy. (Packaged)(Incls. items 1 thru 4 & 40) | 1 |
| 33 | 439870-1 | Knife - Service | 1 |
| 34 | SD-37-44 | Self-Tapping Screw 1/4-20 x 1 5/8 Pan Hd., Type TT | 4 |
| 35 | WS-22-8 | Washer | 2 |
| 36 | 435401 | Spacer - Deflector Mounting | 2 |
| 37 | 73265 | Plug - Plate Thrust | 1 |
| 38 | 73356-2 | Screw - Knife (Incls. items 37 & 39) | 1 |
| 39 | SC-64-4 | Set Screw 1/4-28 x 3/8 Hdls., Flat Pt. "Nylok" | 1 |
| 40 | SC-122-53 | Mach. Screw 4-40 x 5/8 Phil. Pan Hd. | 1 |



**KNIFE SHARPENER UNIT
(ML-104029, ML-104030 & ML-104031)**

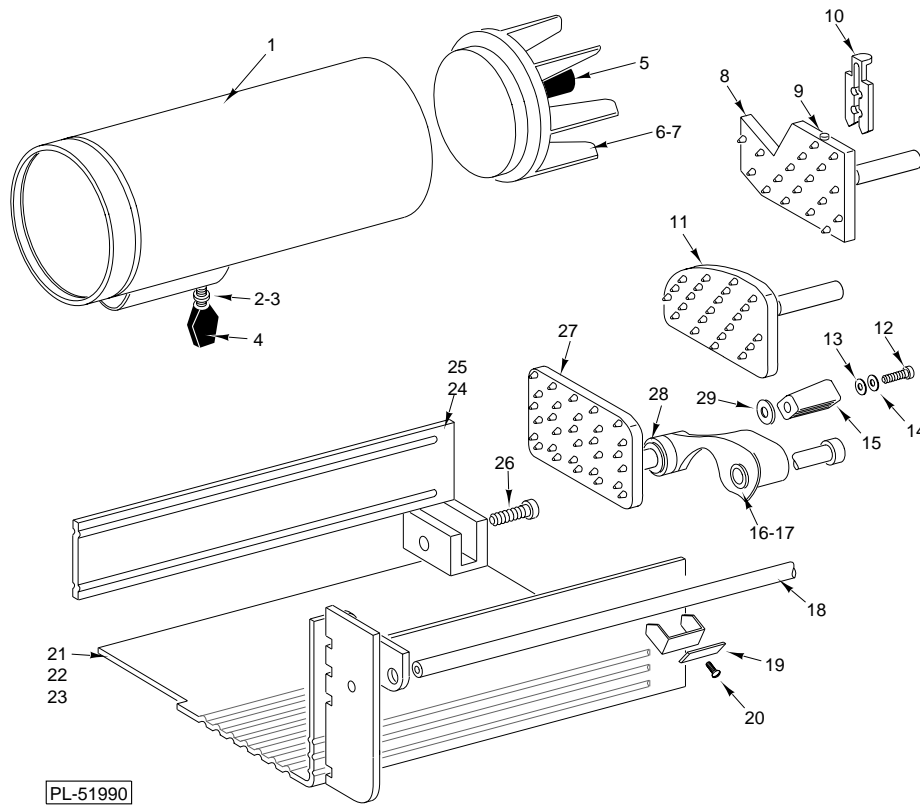
| ILLUS. PL-51988 | PART NO. | NAME OF PART | AMT. |
|--------------------|-------------|---|------|
| 1 | SC-122-31 | Mach. Screw 8-32 x 7/16 Phil. Oval Hd. | 1 |
| 2 | 435081 | Top Cover - Sharpener | 1 |
| 3 | 274934 | Button - Truing Arm | 1 |
| 4 | 119871 | Spacer - Grinding Wheel Shaft | 1 |
| 5 | BA-2-1 | Ball 1/8 Dia. | 11 |
| 6 | 270503 | Shaft - Grinding Wheel | 1 |
| 7 | 437847 | Stone Service Kit (Incls. Grinding Wheel) | 1 |
| 8 | 435814 | Retaining Screw (R.H.) | 1 |
| 9 | 274933 | Body - Sharpener & Pins | 1 |
| 10 | 437384 | Spring - Truing Arm | 1 |
| 11 | 274929 | Arm - Truing | 1 |
| 12 | PG-7-40 | Groove Pin 1/16 | 1 |
| 13 | 119882 | Holder & Truing Stone Assy | 1 |
| 14 | 435324 | Spring - Truing Stone | 1 |
| 15 | RR-6-22 | Retaining Ring | 1 |
| 16 | SD-15-40 | Self-Tapping Screw 8-32 x 3/8 Phil Pan Hd., Type TT | 2 |
| 17 | 119867 | Spring - Compression | 1 |
| 18 | 270501 | Sleeve - Sharpener | 1 |
| 19 | RR-11-4 | Retaining Ring | 1 |
| 20 | 69585-1 | Plug Button | 1 |
| | 274926 | Sharpener Assy. (Incls. items 1 thru 6, 8 thru 20 & Grinding Wheel) | 1 |
| | 437848 | Sharpener Kit (Incls. Grinding Wheel) | 1 |



**KNIFE SHARPENER UNIT
(ML-104546, ML-104547 & ML-104548)**

| ILLUS. PL-51989 | PART NO. | NAME OF PART | AMT. |
|--------------------|-------------|---|------|
| | 1 | Mach. Screw "Special" 10-24 x 1/2 Phil. Truss Hd. | 2 |
| | 2 | Plate & Cover Assy. | 1 |
| | 3 | Mach. Screw "Special" 8-32 x 1/4 Pan Hd. | 1 |
| | 4 | Actuator | 1 |
| | 5 | Spring - Main | 1 |
| | 6 | Plunger & Ball Bearing Assy. (Incls. item 7) | 1 |
| | 7 | Ball Bearing NSK R4BDD | 2 |
| | 8 | Spring - Return | 1 |
| | 9 | Housing & Stud Assy. | 1 |
| | 10 | Shaft - Grinding Wheel | 1 |
| | 11 | Stone Service Kit | 1 |
| | 12 | Retaining Screw (R.H.) | 1 |
| | 13 | Mach. Screw "Special" 2-56 x 3/16 Pan Hd. | 1 |
| | 14 | Spring - "U" (Long End Inserted Into Housing) | 1 |
| | 15 | Screw - Shoulder "Special" | 1 |
| | 16 | Mach. Screw "Special" 8-32 x 1/4 Pan Hd. | 1 |
| | 17 | Lever - Locking | 1 |
| | 18 | Stone - Truing | 1 |
| | 19 | Spring - Truing Stone | 2 |
| | 20 | Retaining Ring | 1 |
| | 21 | Spring - Truing Arm | 1 |
| | 22 | Rod - Truing Arm Pusher | 1 |
| | 23 | Mach. Screw "Special" 4-40 x 1/4 Flat Hd. | 2 |
| | 24 | Plate - Rear Locking | 1 |
| | 25 | Arm - Truing & Pusher Rod Assy. (Incls. items 22, Stud & Truing Arm) | 1 |
| | 26 | Retaining Ring | 1 |

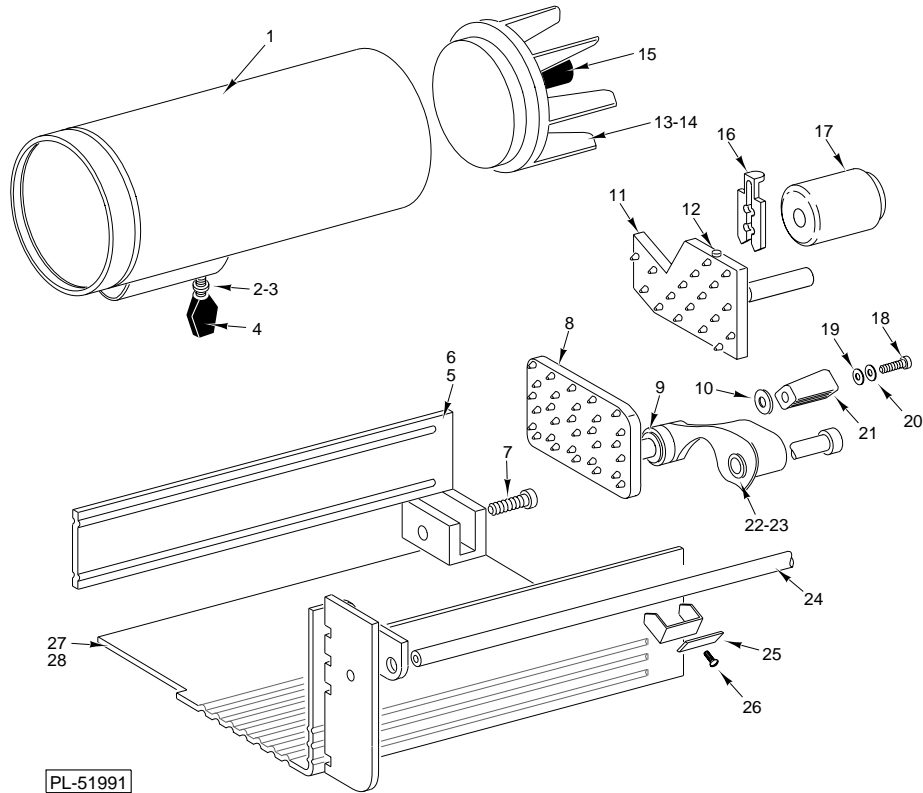
1612E, 1712E AND 1712RE SLICER REPLACEMENT PARTS



PL-51990

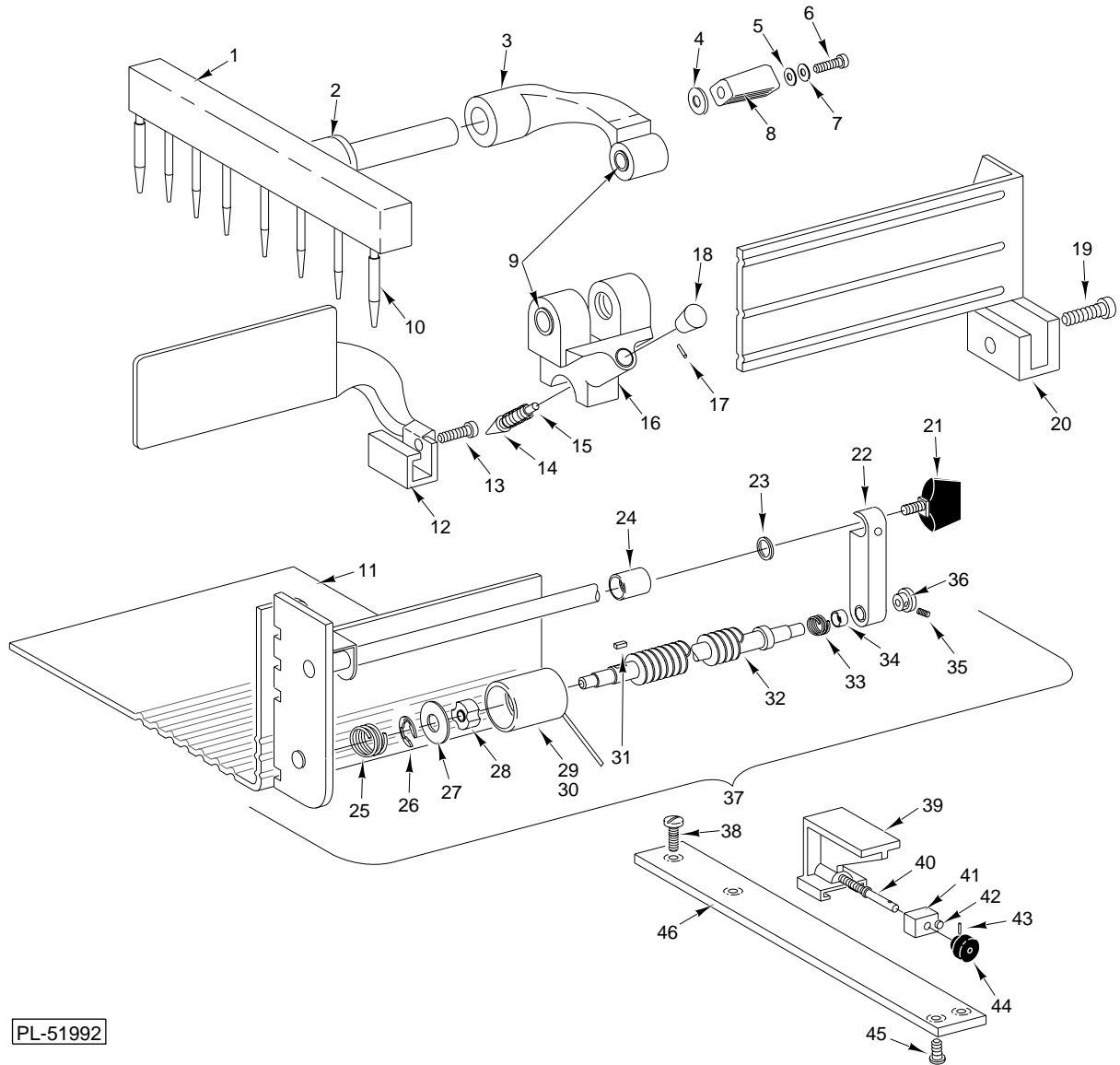
1612E CARRIAGE TRAY

| ILLUS. PL-51990 | PART NO. | NAME OF PART | AMT. |
|--------------------|-------------|--|------|
| 1 | 118332-1 | Tube & Angled Seat Assy | 1 |
| 2 | RR-11-60 | Retaining Ring | 1 |
| 3 | 107364-2 | Washer - Belleville | 1 |
| 4 | 108197-5 | Thumb Screw | 1 |
| 5 | 70194 | Handle - Gauge Plate | 1 |
| 6 | 75930 | Plate - Pusher | 1 |
| 7 | 75945 | Pusher Plate & Handle Assy. (Incls. items 5 & 6) | 1 |
| 8 | 438176 | Meat Grip Assy. (Heavy)(Packaged)(Incls. items 9 & 10) | 1 |
| 9 | 70360-1 | Button - Plastic | 5 |
| 10 | 70341 | Meat Holder - Meat Grip (Use with item 8) | 2 |
| 11 | 438175 | Meat Grip Assy. (Light Weight)(Packaged) | 1 |
| 12 | 68042 | Screw - Truss Hd. "Nylok" | 1 |
| 13 | 70344 | Washer - Handle Tension | 1 |
| 14 | 70345 | Washer - Handle Retaining | 1 |
| 15 | 70202 | Handle - Meat Grip (Non-Metallic) | 1 |
| 16 | 437124 | Bearing - Meat Grip Arm | 2 |
| 17 | WS-21-19 | Washer | AR |
| 18 | 435949 | Shaft - Knob Assy. | 1 |
| 19 | 72579 | Clip - Meat Grip Retaining | 1 |
| 20 | SC-8-9 | Mach. Screw 10-24 x 3/8 Rd. Hd. | 2 |
| 21 | 437115-1 | Carriage Tray Assy. (SST) | 1 |
| 22 | 437119-6 | Carriage Tray Assy. (1612)(Incls. items 2,3,12 thru 15,17,19,20,21,27,28 & 29) | 1 |
| 23 | 437119-7 | Carriage Tray Assy. (1712)(Incls. items 2,3,4,12 thru 15,17,19,20,21,27,28 & 29) | 1 |
| 24 | 295118 | Fence & Thumb Screw Assy. (Packaged)(SST)(Incls. item 26) | 1 |
| 25 | 295117 | High Fence & Thumb Screw Assy. (Horizontal Carriage Tray)(SST)(Incls. item 26) | 1 |
| 26 | 290984 | Thumb Screw - Fence | 1 |
| 27 | 437908 | Meat Grip Assy. (Standard) | 1 |
| 28 | 438280 | Bushing | 1 |
| 29 | 437006 | Washer - Handle | 1 |
| | ML-31329-Z | Food Chute Attachment Assy. (Incls. items 1 & 3 thru 6) | 1 |
| | 437912-1 | Meat Grip Assy. & Arm Assy. (Incls. items 12 thru 15, 27, 28 & 29) | 1 |



1712E CARRIAGE TRAY

| ILLUS. PL-51991 | PART NO. | NAME OF PART | AMT. |
|--------------------|-------------|---|------|
| 1 | 118332-1 | Tube & Angled Seat Assy | 1 |
| 2 | RR-11-60 | Retaining Ring | 1 |
| 3 | 107364-2 | Washer - Belleville | 1 |
| 4 | 108197-5 | Thumb Screw | 1 |
| 5 | 295118 | Fence & Thumb Screw Assy. (Packaged)(SST)(Incls. item 7) | 1 |
| 6 | 295117 | High Fence & Thumb Screw Assy. (Horizontal Carriage Tray)(SST)(Incls. item 7) | 1 |
| 7 | 290984 | Thumb Screw - Fence | 1 |
| 8 | 437908 | Meat Grip Assy. (Standard) | 1 |
| 9 | 438280 | Bushing | 1 |
| 10 | 437006 | Washer - Handle | 1 |
| 11 | 438176 | Meat Grip Assy. (Heavy)(Packaged)(Incls. items 12 & 16) | 1 |
| 12 | 70360-1 | Button - Plastic | 5 |
| 13 | 75930 | Plate - Pusher | 1 |
| 14 | 75945 | Pusher Plate & Handle Assy. (Incls. items 13 & 15) | 1 |
| 15 | 70194 | Handle - Gauge Plate | 1 |
| 16 | 70341 | Meat Holder - Meat Grip (Use with item 11) | 2 |
| 17 | 438177 | Handle - Meat Grip (Heavy)(Packaged) | 1 |
| 18 | 68042 | Screw - Truss Hd. "Nylok" | 1 |
| 19 | 70344 | Washer - Handle Tension | 1 |
| 20 | 70345 | Washer - Handle Retaining | 1 |
| 21 | 70202 | Handle - Meat Grip (Non-Metallic) | 1 |
| 22 | 437124 | Bearing - Meat Grip Arm | 2 |
| 23 | WS-21-19 | Washer | AR |
| 24 | 435949 | Shaft - Knob Assy. | 1 |
| 25 | 72579 | Clip - Meat Grip Retaining | 1 |
| 26 | SC-8-9 | Mach. Screw 10-24 x 3/8 Rd. Hd. | 2 |
| 27 | 437115-1 | Carriage Tray Assy. (SST) | 1 |
| 28 | 437116 | Horizontal Carriage Tray & Slide Rod Assy.(SST) | 1 |
| | 437912-1 | Meat Grip Assy. & Arm Assy. (Incls. items 8, 9, 10 & 18 thru 22) | 1 |
| | ML-31329-Z | Food Chute Attachment Assy. (Incls. items 1, 3, 4, 13 & 15) | 1 |
| | 437120 | Horizontal Carriage Tray, Grip & Arm (Incls. items 2, 3, 4, 23, 25, 26 & 28) | 1 |

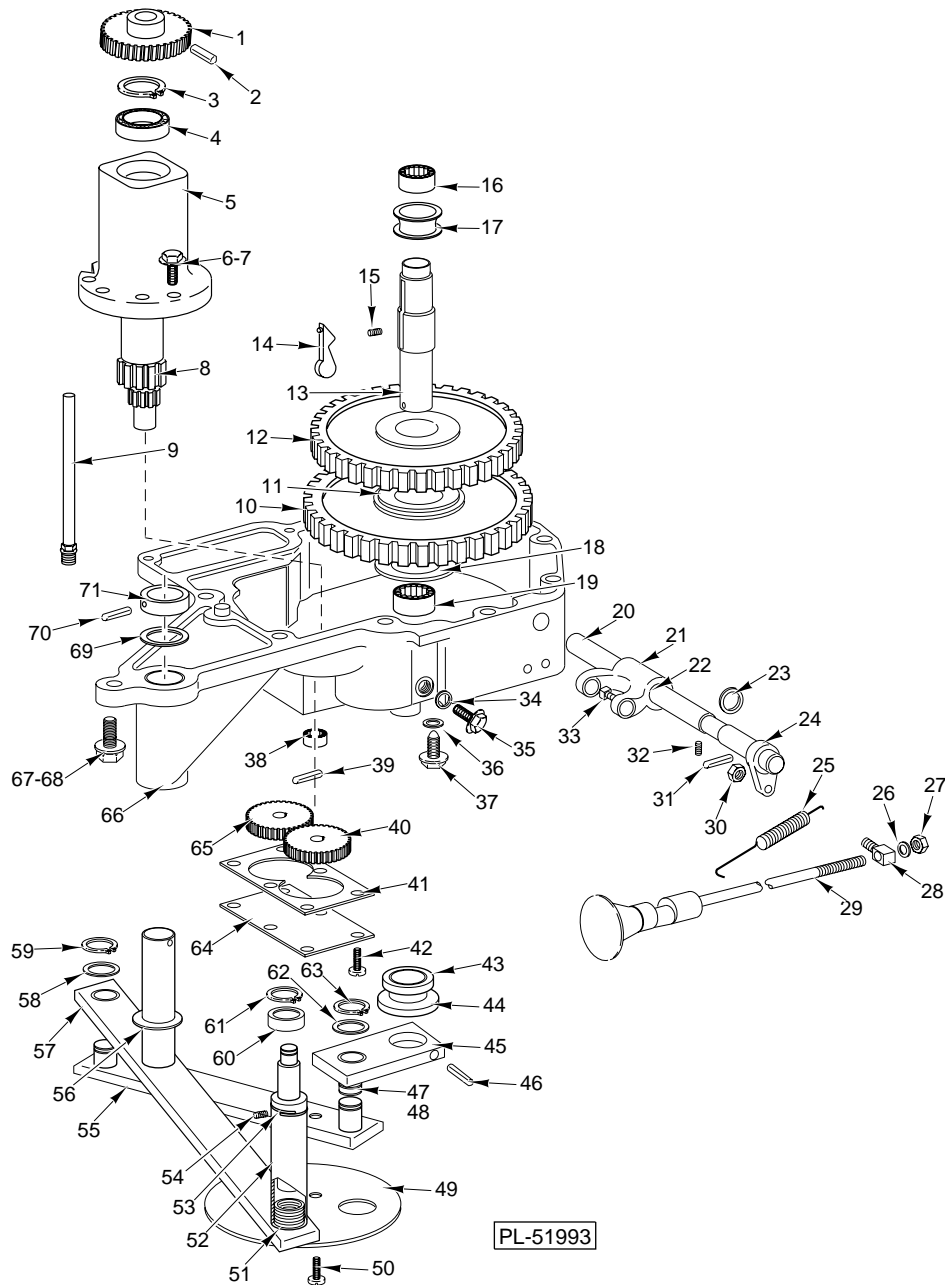


PL-51992

1712RE CARRIAGE TRAY

1712RE CARRIAGE TRAY

| ILLUS. PL-51992 | PART NO. | NAME OF PART | AMT. |
|--------------------|-------------|--|------|
| 1 | 105134-2 | Meat Grip Assy. (Incls. item 10) | 1 |
| 2 | 438280 | Bushing | 1 |
| 3 | 437164-2 | Meat Grip Arm & Bearing Assy. (Incls. item 9) | 1 |
| 4 | 437006 | Washer - Handle | 1 |
| 5 | 70344 | Washer - Handle Tension | 1 |
| 6 | 68042 | Screw - Truss Hd. "Nylok" | 1 |
| 7 | 70345 | Washer - Handle Retaining | 1 |
| 8 | 70202 | Handle - Meat Grip (Non-Metallic) | 1 |
| 9 | 437124 | Bearing - Meat Grip Arm | 4 |
| 10 | 291665 | Cover - Meat Grip Pin | 2 |
| 11 | 290973 | Carriage Tray & Slide Rod Assy. | 1 |
| 12 | 295117 | High Fence & Thumb Screw Assy. (Packaged)(Incls. item 13) | 1 |
| 13 | 290984 | Thumb Screw - Fence | 1 |
| 14 | 105067 | Plunger - Feed Screw | 1 |
| 15 | 105065 | Spring - Plunger | 1 |
| 16 | 114912 | Plunger Housing Assy. (Incls. items 9, 14, 15, 17 & 18) | 1 |
| 17 | PG-7-44 | Groov Pin - Type E, $\frac{3}{32}$ x $\frac{7}{16}$ | 1 |
| 18 | 116491 | Knob - Plunger | 1 |
| 19 | 290984 | Thumb Screw - Fence | 1 |
| 20 | 295117 | High Fence & Thumb Screw Assy. (Packaged)(Incls. item 19) | 1 |
| 21 | 108197-9 | Thumb Screw | 1 |
| 22 | 105240 | Feed Screw Latch & Bushing Assy. | 1 |
| 23 | WS-21-19 | Washer | 1 |
| 24 | 436902 | Spacer - Feed Screw | 1 |
| 25 | 105064 | Spring - Clutch Housing | 1 |
| 26 | RR-4-5 | Retaining Ring | 1 |
| 27 | 105068 | Washer - Clutch Housing | 1 |
| 28 | 105073 | Clutch - Special | 2 |
| 29 | 290965 | Clutch Housing Assy. | 1 |
| 30 | 105057 | Bushing | 1 |
| 31 | 105393 | Key | 1 |
| 32 | 436903 | Screw - Feed | 1 |
| 33 | 105063 | Spring - Feed Screw | 1 |
| 34 | 105066 | Cage - Spring | 4 |
| 35 | SC-55-2 | Set Screw $\frac{1}{4}$ -20 x $\frac{1}{4}$ Hdls., Kn. Cup Pt. | 2 |
| 36 | 291342 | Knob - Feed Screw | 2 |
| 37 | 437383 | Tray - Horizontal (Incls. items 11, 16, 21 thru 29 & 31 thru 36) | 1 |
| 38 | SC-22-39 | Mach. Screw $\frac{1}{4}$ -20 x $\frac{5}{8}$ Flat Hd. | 1 |
| 39 | 105186 | Block - Actuating | 1 |
| 40 | 105071 | Screw - Adjusting | 1 |
| 41 | 105075 | Retainer - Adjusting Screw | 1 |
| 42 | 79686 | Catch - Friction | 1 |
| 43 | RP-2-33 | Roll Pin $\frac{3}{32}$ Dia. x 1 Lg. | 1 |
| 44 | 105069 | Knob - Adjusting Screw | 1 |
| 45 | SC-22-19 | Mach. Screw 10-24 x $\frac{1}{2}$ Flat Hd. | 2 |
| 46 | 291343-1 | Slide Plate - Actuating Block | 1 |
| | 105078 | Slide Plate Knob & Adjusting Screw Assy. (Incls. items 39 thru 46) | 1 |
| | 105582-2 | Meat Grip Arm & Handle Assy. (Incls. items 1 thru 8) | 1 |

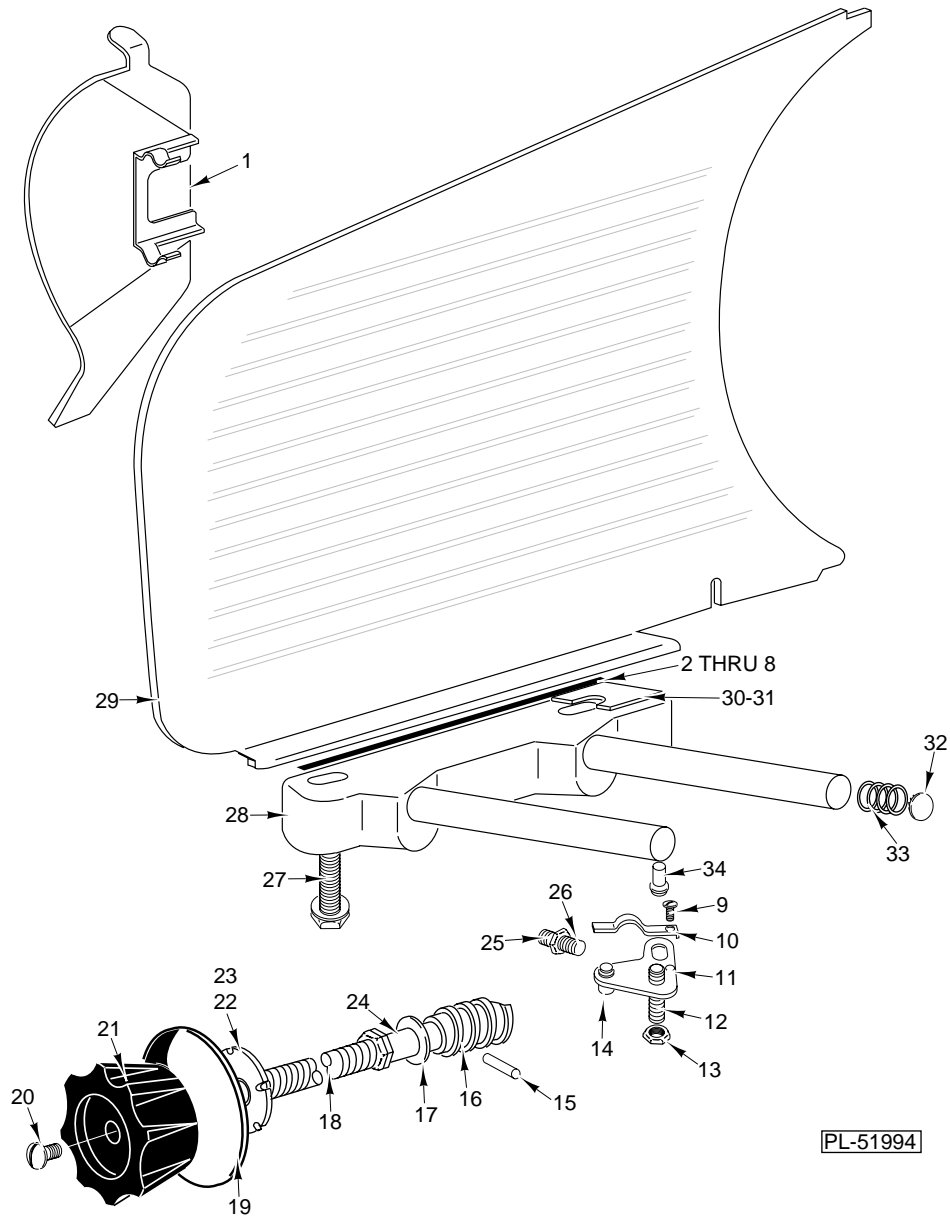


1712E/1712RE GEAR CASE

| ILLUS. PL-51993 | PART NO. | NAME OF PART | AMT. |
|--------------------|-------------|---|------|
| | 1 | Gear - Worm (29T) | 1 |
| | 2 | Roll Pin $\frac{3}{16}$ Dia. x 1 $\frac{1}{8}$ Lg | 1 |
| | 3 | Retaining Ring | 1 |
| | 4 | Ball Bearing - N.D. #3L03 | 1 |
| | 5 | Carrier - Pinion Shaft Bearing | 1 |

REPLACEMENT PARTS 1612E, 1712E AND 1712RE SLICER

| | | | |
|----|-----------|---|---|
| 6 | SC-36-6 | Cap Screw ¼-20 x 1 Hex Hd. | 3 |
| 7 | WL-3-37 | Lockwasher ¼ Medium | 3 |
| 8 | 72716 | Shaft - Pinion (19T & 14T) | 1 |
| 9 | 70248 | Fitting & Oil Tube Assy | 1 |
| 10 | 72715 | Gear - Driven (119T) (Low Speed) | 1 |
| 11 | 70274 | Collar - Diving Key | 1 |
| 12 | 70170 | Gear - Driven (114T)(High Speed) | 1 |
| 13 | 293036 | Shaft - Crank Arm Drive | 1 |
| 14 | 435543 | Key - Diving | 1 |
| 15 | 70308 | Spring - Diving Key | 1 |
| 16 | BN-2-14 | Needle Bearing (Torrington #M-881) | 1 |
| 17 | 61656 | Sleeve - Clutch Shifter | 1 |
| 18 | 70281 | Washer - Gear Thrust | 1 |
| 19 | BN-2-15 | Needle Bearing (Torrington #B-126) | 1 |
| 20 | 70267 | Shaft - Shifter | 1 |
| 21 | 61654 | Yoke - Shifter | 1 |
| 22 | 12430-3 | Key ¼ Sq. x 1 ½ Lg. | 1 |
| 23 | 67500-2 | "O" Ring | 1 |
| 24 | 70296 | Bracket - Shifter | 1 |
| 25 | 70285 | Spring - Shifter Mech. | 1 |
| 26 | WL-8-13 | Lockwasher 10 Internal Shakeproof | 2 |
| 27 | NS-9-30 | Mach. Nut 10-32 Hex | 2 |
| 28 | 70286 | Knuckle - Shifter | 1 |
| 29 | 70446 | Shift Rod, Selector & Knob Assy | 1 |
| 30 | NS-32-1 | Stop Nut 10-24 "Flexloc" | 1 |
| 31 | RP-2-28 | Roll Pin ¼ Dia. x ¾ Lg. | 1 |
| 32 | SC-63-14 | Set Screw 8-32 x ¼ Hdls., Flat Pt. | 1 |
| 33 | 61655 | Shoe - Shifter | 2 |
| 34 | WS-21-20 | Washer | 1 |
| 35 | 64465-3 | Plug - Oil Fill | 1 |
| 36 | WS-21-21 | Washer | 1 |
| 37 | SC-62-68 | Cap Screw ½-20 x ¾ Hex Hd. | 1 |
| 38 | BN-2-13 | Needle Bearing (Torrington #B-86) | 1 |
| 39 | 11800-200 | Dowel | 1 |
| 40 | 70243 | Gear - Oil Pump Drive (27T) | 1 |
| 41 | 70244 | Gasket - Bottom Cover | 1 |
| 42 | SC-14-76 | Mach. Screw 10-24 x ¾ Flat Hd. | 6 |
| 43 | 70442 | Seal - Drive Shaft | 1 |
| 44 | 70290 | Washer - Crank Arm Thrust | 1 |
| 45 | 123889 | Arm & Bearing Assy | 1 |
| 46 | RP-2-46 | Roll Pin ¼ Dia. x 1 ¼ Lg. | 1 |
| 47 | WS-8-9 | Washer | 2 |
| 48 | WS-8-8 | Washer | 1 |
| 49 | 103915 | Cover Plate - Connecting Rod | 2 |
| 50 | SC-9-28 | Mach. Screw 10-24 x ¾ Rd. Hd. | 2 |
| 51 | 70307 | Spring - Engaging Mech. | 1 |
| 52 | 70295 | Shaft - Engaging Mech. | 1 |
| 53 | 70396 | Ring - Stop Retaining | 1 |
| 54 | 70324 | Stop - Engaging Mech. Shaft | 1 |
| 55 | 70268 | Connecting Rod Assy | 1 |
| 56 | 70283 | Washer - Thrust | 1 |
| 57 | 70259 | Engaging Arm Assy | 1 |
| 58 | WS-7-21 | Washer | 1 |
| 59 | RR-4-17 | Retaining Ring | 1 |
| 60 | 70303 | Roller - Engaging Mech. | 1 |
| 61 | RR-4-3 | Retaining Ring | 1 |
| 62 | WS-7-21 | Washer | 1 |
| 63 | RR-4-17 | Retaining Ring | 1 |
| 64 | 70234 | Cover - Gear Pump Bottom | 1 |
| 65 | 70242 | Gear - Oil Pump Idler (27T) | 1 |
| 66 | 124640-1 | Gear Case, Bearing & Dowel Assy. (Incls. items 19 & 43) | 1 |
| 67 | SD-33-8 | Self-Tapping Screw ⅝-18 x 1 Hex Washer Hd., Type TT | 4 |
| 68 | SD-33-9 | Self-Tapping Screw ⅝-18 x 3 Hex Washer Hd., Type TT | 7 |
| 69 | 70283 | Washer - Thrust | 1 |
| 70 | RP-3-12 | Roll Pin ½ Dia. x 1 ¼ Lg. | 1 |
| 71 | 70275 | Collar - Pivot Shaft Thrust | 1 |
| | 72714 | Bearing, Carrier, Pinion Shaft & Gear Assy. (Incls. items 1 thru 5 & 8) | 1 |
| | 106933 | Drive Shaft Assy. (Incls. items 13, 14, 15 & 17) | 1 |



GAUGE PLATE & INDEXING MECHANISM

GAUGE PLATE & INDEXING MECHANISM

| ILLUS. PL-51994 | PART NO. | NAME OF PART | AMT. |
|--------------------|-------------|--|------|
| 1 | 274911 | Deflector | 1 |
| 2 | 122559-1 | Shim .0075 Thk. | AR |
| 3 | 122559-2 | Shim .010 Thk. | AR |
| 4 | 122559-3 | Shim .0125 Thk. | AR |
| 5 | 122573-1 | Shim .002 Thk. | AR |
| 6 | 122573-2 | Shim .003 Thk. | AR |
| 7 | 122573-3 | Shim .004 Thk. | AR |
| 8 | 122573-4 | Shim .005 Thk. | AR |
| 9 | SC-8-14 | Mach. Screw 10-32 x $\frac{3}{16}$ Rd. Hd. | 1 |
| 10 | 437212 | Spring - Indexing Plate | 1 |
| 11 | 437213 | Indexing Plate Assy. (Incls. items 9, 10, 12 & 14) | 1 |
| 12 | 291569 | Stud - Collar Assy. | 1 |
| 13 | NS-32-12 | Stop Nut $\frac{5}{16}$ -18 "Flexloc" | 1 |
| 14 | 70342 | Roller - Indexing | 1 |
| 15 | RP-3-1 | Roll Pin $\frac{5}{32}$ Dia. x $\frac{5}{8}$ Lg. | 1 |
| 16 | 87495 | Worm - Indexing | 1 |
| 17 | 88298 | Washer - Belleville | 2 |
| 18 | 10928-2 | Nut - Special | 2 |
| 19 | 118175 | Dial Assy. | 1 |
| 20 | SC-23-10 | Mach. Screw 10-24 x $\frac{3}{4}$ Oval Hd. | 1 |
| 21 | 114214 | Cap - Index Knob | 1 |
| 22 | 76948 | Disc. - Indexing Drive | 1 |
| 23 | RP-2-40 | Roll Pin $\frac{3}{32}$ Dia. x $\frac{3}{4}$ Lg. | 1 |
| 24 | 87494 | Shaft - Indexing | 1 |
| 25 | NS-17-1 | Jam Nut $\frac{1}{4}$ -20 Hex | 1 |
| 26 | SC-63-28 | Set Screw $\frac{1}{4}$ -20 x 1 Hdls., Flat Pt. | 1 |
| 27 | 112913 | Screw - Special | 2 |
| 28 | 274989 | Gauge Plate Support & Slide Rod Assy. | 1 |
| 29 | 124768 | Gauge Plate Unit | 1 |
| 30 | 291171-1 | Spacer - Gauge Plate Sprocket (.003 Thk.) | AR |
| 31 | 291171-2 | Spacer - Gauge Plate Sprocket (.005 Thk.) | AR |
| 32 | 76952 | Plug - Expansion | 1 |
| 33 | 274906 | Spring - Gage Plate | 1 |
| 34 | 70343 | Roller - Indexing Plate (Straight) | 1 |
| | 87493 | Indexing Shaft & Worm Assy. (Incls. items 15, 16 & 24) | 1 |

