

CCA DISHWASHERS PARTS MANUAL

CCA 洗碗机零部件手册



HOBART

HOBART FOOD EQUIPMENT CO., LTD.
高达食品设备有限公司

Content Page

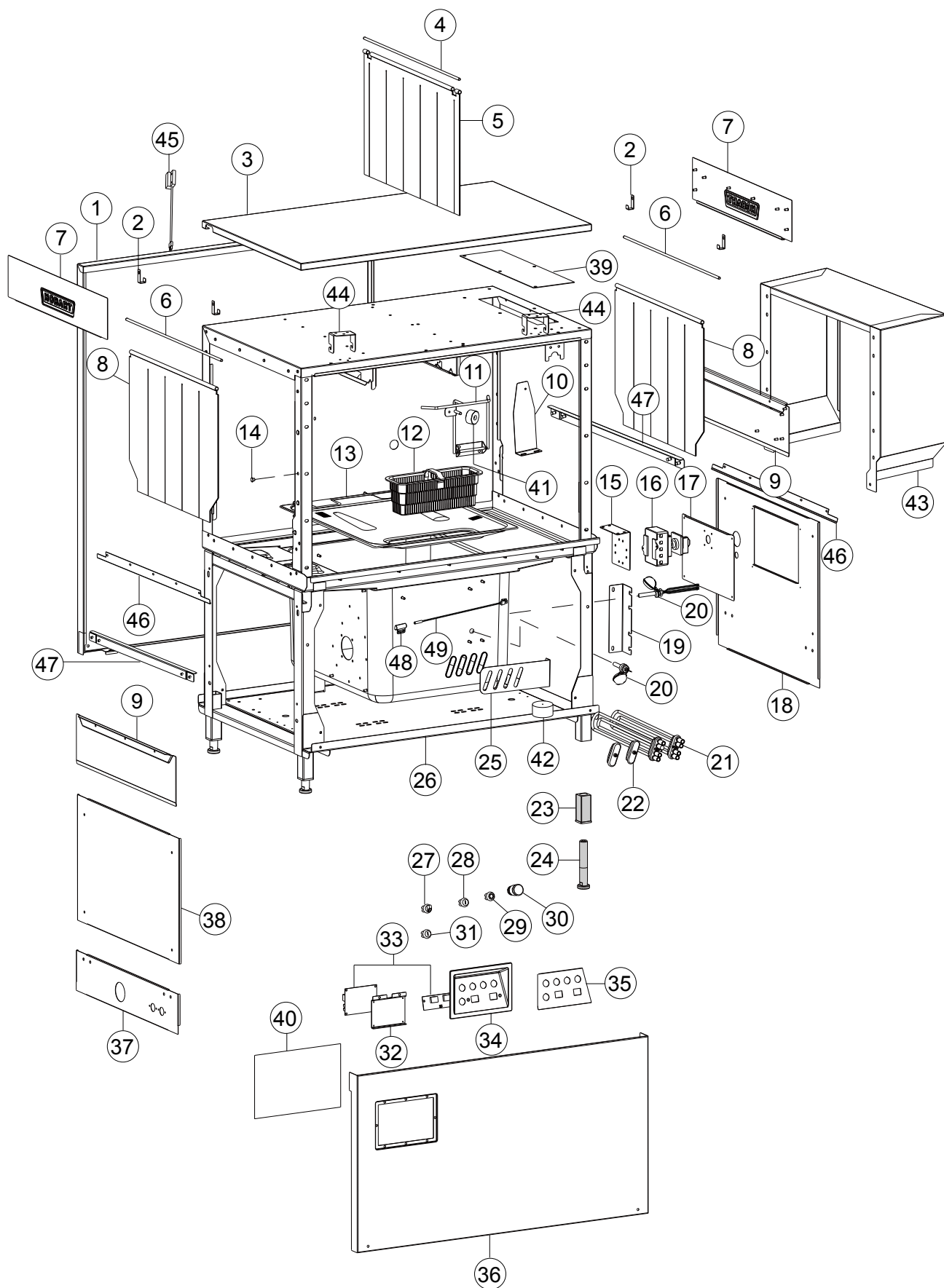
| | |
|------------------------------------|----|
| Modul AR | 4 |
| Drain System..... | 8 |
| Transport System..... | 10 |
| Wash System | 12 |
| Rinse System | 14 |
| Fill System..... | 16 |
| Entry Hood..... | 18 |
| Booster | 20 |
| Booster(Steam)..... | 22 |
| Door and Insulation | 24 |
| Auto Timer | 26 |
| Heat Recovery(Option) | 28 |
| Switch Box(Easytronic) | 30 |
| Switch Box(Smartronic) | 32 |
| Prewash Module | 34 |
| Transport System(Prewash) | 36 |
| Door and Insulation(Prewash) | 38 |
| Dryer Module..... | 40 |
| Dryer Heating | 42 |
| Steam Piping..... | 44 |

目录 页码

| | |
|--------------------------|----|
| 1100 模块部装 | 4 |
| 排水系统..... | 8 |
| 传动系统..... | 10 |
| 清洗系统..... | 12 |
| 喷淋系统..... | 14 |
| 注水系统..... | 16 |
| 入口风罩焊件..... | 18 |
| 助热器总成..... | 20 |
| 助热器总成（蒸汽型）..... | 22 |
| 隔热板组件..... | 24 |
| 触发开关组件..... | 26 |
| 热回收组件（可选）..... | 28 |
| 电器箱装配 (Easytronic) | 30 |
| 电器箱装配 (Smartronic) | 32 |
| 预洗模块..... | 34 |
| 传动系统（预洗）..... | 36 |
| 隔热板组件（预洗）..... | 38 |
| 烘干模块..... | 40 |
| 烘干加热..... | 42 |
| 蒸汽管路..... | 44 |

Modul AR

1100 模块部装



Modul AR

1100 模块部装

| Illus. 序号 | Parts No. 零件号 | Description 名称 | |
|--------------|-------------------------|-------------------|---|
| 1 | 02-291317-007 | 隔热背板 | Back Panel |
| 2 | 7159103-1 | 门帘挂钩 | PoTHOOK |
| 3 | 7159117-11 | 隔热顶板焊件 (不带排风) | Ceiling Insulation(without exhaust) |
| | 7159117-12 | 隔热顶板焊件 (带排风) | Ceiling Insulation(with exhaust) |
| 4 | 01-245396-006 | 门帘棍 | Curtain Rod |
| 5 | 01-291315-003 | 短门帘 | Curtain |
| 6 | 01-245396-007 | 门帘棍 | Curtain Rod |
| 7 | 01-291497-002 | 挡板焊件 | Baffle Plate |
| 8 | 01-291315-001 | 长门帘 | Curtain |
| 9 | 01-291429-001 | 水箱端板焊件 | Table Plate Assy |
| 10 | 7159133-2 | 磁开关支架 | Holder Read Switch |
| 11 | 7159120-10 | 开关焊件 L-R | Magnet Braket Assy L-R |
| | 7159120-11 | 开关焊件 R-L | Magnet Braket Assy R-L |
| 12 | 01-245170-010 | 过滤篮 | Screen Basket Compl.2-Parts |
| 13 | 01-245047-006 | 过滤筛网 L-R | Tank Cover Fillter L-R |
| | 01-245047-005 | 过滤筛网 R-L | Tank Cover Fillter R-L |
| 14 | 7159135-1 | 孔堵塞 | Plug |
| 15 | 7159108-2 | 开关支架 | Holder Main Switich |
| 16 | 02-785574-006 | 隔离开关 | Main Switch |
| 17 | 02-291427-001 | 电源开关护板 | Plate Main Switch |
| 18 | 01-291419-001 | 出口护板 L-R | Exit Cover L-R |
| | 01-291419-002 | 出口护板 R-L | Exit Cover R-L |
| | 01-291419-004 | 出口护板 L-R(仅蒸汽加热) | Exit Cover L-R (Only for steam heating) |
| | 01-291419-005 | 出口护板 R-L(仅蒸汽加热) | Exit Cover R-L (Only for steam heating) |
| 19 | 7159114-1 | 电器箱支架 | Control Box Braket |
| 20 | 01-245621-002 | 浮子开关 | Mit Temperature Hler NTC |
| 21 | 02-324637-001 | 电热管 220V 6kW | Heating Element 220V 6kW |
| | 02-324637-002 | 电热管 220V 4kW | Heating Element 220V 4kW |
| | 02-324637-003 | 电热管 200V 6kW | Heating Element 200V 6kW |
| | 02-324637-004 | 电热管 200V 4kW | Heating Element 200V 4kW |
| | 02-324637-005 | 电热管 220V 5kW | Heating Element 220V 5kW |
| 22 | 02-774808-001 | 堵头 | Blind Plug |
| 23 | 00-325008-001 | 地脚座 | Kit Asjustable Foot Fin |
| 24 | 00-325007-001 | 地脚 | Foot |
| 25 | 02-245372-002 | 电热管支架 | Heating Element Braket |
| 26 | 01-291850-001 | 1100 模块框架合件 L-R | Wash Modul AR 1100 L-R |
| | 01-291850-002 | 1100 模块框架合件 R-L | Wash Modul AR 1100 R-L |
| 27 | 02-887015-071 | 排水 / 注水按钮 | Drain/Fill Button |
| 28 | 02-887015-033 | 启动按钮 | Start Button |
| 29 | 02-887015-021 | 停止按钮 | Stop Button |
| 30 | 02-887015-025 | 急停按钮 | Emergency Button |
| 31 | 02-887015-045 | 电源指示灯 | Power LED |
| 32 | 7159122-1 | 温度控制板支架 | Braket |
| 33 | 7159126-1 | 温度控制器组件 | Thermostat Assy |
| | 7159126-10 | 温度显示屏 - 部件 | Temperature Screen-Part |
| | 7159126-11 | 温度控制板 (AC) - 部件 | Control Board (AC)-Part |
| | 7159126-13 | 温控探头 - 部件 | Temperature Probe-Part |
| | 7159126-14(15/16/17/18) | 感温线 - 部件 | Temperature Sense Line-Part |
| 34 | 7159109-1 | 控制面板 | Keyboard |
| 35 | 7159109-2 | 控制面板贴面 | Keyboard Foil |
| 36 | 7159104-4 | 前护板 L-R | Front Panel L-R |
| | 7159104-5 | 前护板 R-L | Front Panel R-L |
| | 7159104-3 | 前护板 (Smart) | Front Panel(Smart) |
| 37 | 01-291408-001 | 入口下护板 L-R | Entry Cover L-R |
| | 01-291408-002 | 入口下护板 R-L | Entry Cover R-L |

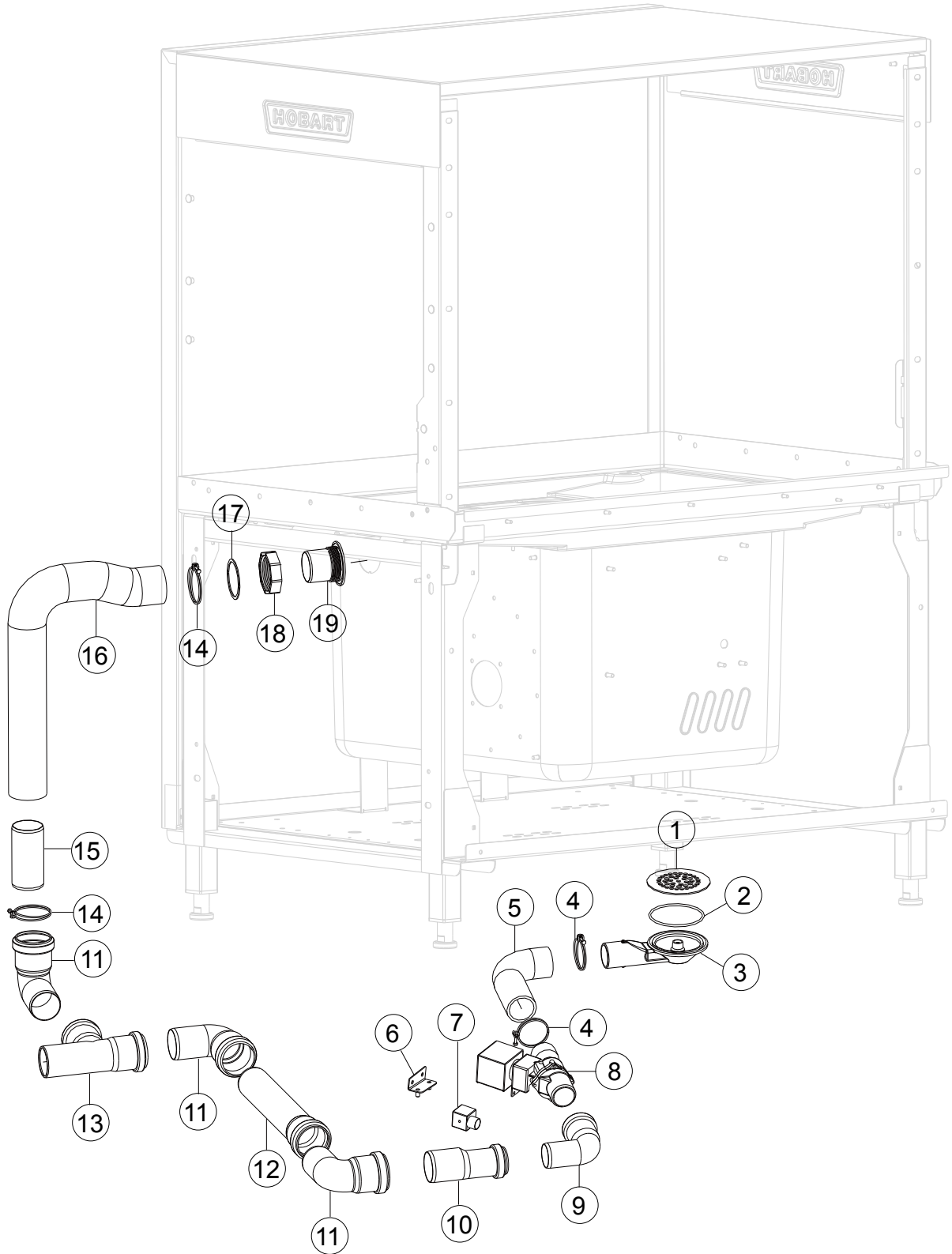
Modul AR

1100 模块部装

| Illus. | Parts No. | Description | |
|--------|---------------|-----------------|---|
| 序号 | 零件号 | 名称 | |
| 38 | 01-291409-001 | 入口护板 | Entry Cover |
| 39 | 7159123-1 | 盖板 | Cover |
| 40 | 7159125-24 | 挡水帘 | Breakwater |
| 41 | 00-774714-001 | 门磁铁 | Magnet |
| 42 | 898282-001 | 变压器 (仅 200V 机型) | Transform(only for voltage of 200V) |
| 43 | 01-291404-001 | 出口风罩焊件 (仅带热回收) | Exit Hood(only for the type with heat recovery) |
| 44 | 7159137-1 | 挂钩焊件 | Pothook |
| 45 | 229517-002 | 触发开关 | Magnetic Switch |
| 46 | 00-896394-001 | 加强板 | Reinforce Panel |
| 47 | 01-291432-001 | 连接板焊件 | Cross Brace |
| 48 | 00-883838-001 | 磁开关压板 | Switch Holder |
| 49 | 01-240288-001 | 磁开关总成 | Magenetic Switch |

Drain System

排水系统

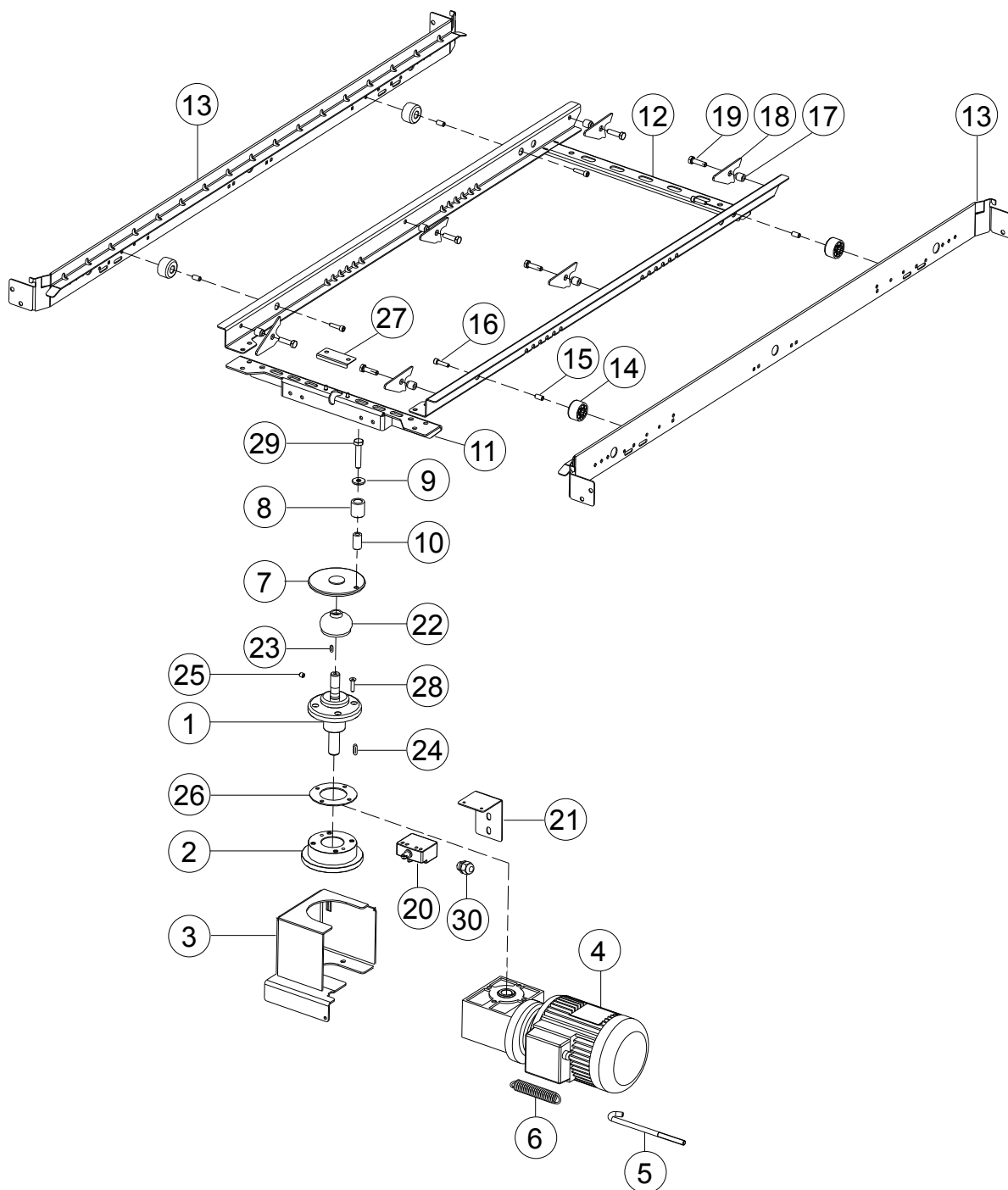


Drain System

排水系统

| Illus. | Parts No. | Description | |
|---------------|------------------|--------------------|-------------------------|
| 序号 | 零件号 | 名称 | |
| 1 | 01-245107-001 | 过滤网 | Coarse Screen Wash Tank |
| 2 | 02-245340-004 | O形圈 80X3.55 | O Ring |
| 3 | 01-245109-001 | 排水阀座组件 | Drain Piece |
| 4 | 00-323945-053 | 喉箍 53 | Hose Clamp 53 |
| 5 | 01-291527-001 | 排水胶管 | Hose |
| 6 | 01-291684-001 | 排水阀支板焊件 | Valve Holder Assy |
| 7 | 02-228905-001 | 接头 | Connect Jack |
| 8 | 00-774683-001 | 排水电磁阀 | Drain Valve |
| 9 | 00-230080-002 | 弯头 | Elbow |
| 10 | 00-325708-001 | 短接管 | Connector |
| 11 | 00-230080-001 | 弯头 | Elbow |
| 12 | 00-229679-006 | 直管 | Tube |
| 13 | 00-230079-001 | 三通 | Tee |
| 14 | 00-323945-064 | 喉箍 64 | Hose Clamp 64 |
| 15 | 00-325737-007 | 短接管 | Connector |
| 16 | 01-291519-001 | 排水胶管 | Hose |
| 17 | 01-245460-001 | 密封垫 | Seal OverFlow |
| 18 | 01-245165-001 | 溢流管锁母 | Nut OverFlow |
| 19 | 01-245112-001 | 溢流管 | OverFlow Pipe |

Transport System 传动系统

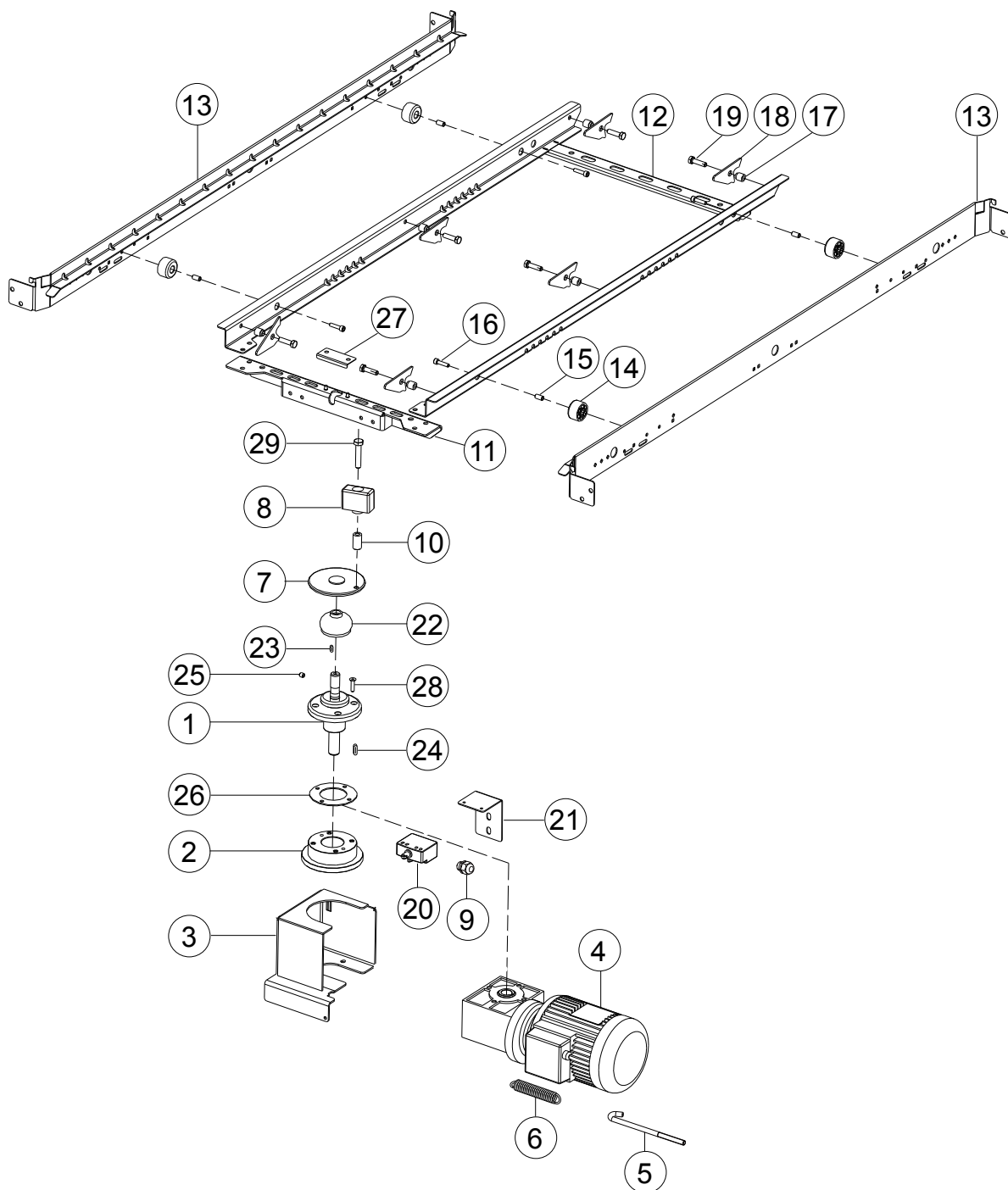


Transport System

传动系统

| Illus. 序号 | Parts No. 零件号 | Description 名称 | |
|--------------|------------------|--------------------------------|-----------------------------------|
| 1 | 02-781064-004 | 电机输出轴组件 (双速) | Flange Bearing Assy |
| | 00-781064-004 | 电机输出轴组件 (单速) | Flange Bearing Assy(single) |
| 2 | 01-291529-001 | 法兰组件 | Motor Bearing(two-speed) |
| 3 | 7159102-8 | 传动电机支架焊件 (单速) L-R | Motor Holder Assy(single) L-R |
| | 7159102-4 | 传动电机支架焊件 (单速) R-L | Motor Holder Assy(single) R-L |
| | 7159102-12 | 传动电机支架焊件 (双速) L-R | Motor Holder Assy(two-speed) L-R |
| | 7159102-16 | 传动电机支架焊件 (双速) R-L | Motor Holder Assy(two-speed) R-L |
| 4 | 02-291291-001 | 减速机 (单速) 220v/380v/50Hz/CCA | Drive Motor 220v/380v/50Hz/CCA |
| | 02-291291-002 | 减速机 (单速) 220v/380v/50Hz/CC(S)A | Drive Motor 220v/380v/50Hz/CC(S)A |
| | 02-291291-003 | 减速机 (双速) 220v/380v/50Hz/CCA | Drive Motor 220v/380v/50Hz/CCA |
| | 02-291291-004 | 减速机 (双速) 220v/380v/50Hz/CNA | Drive Motor 220v/380v/50Hz/CNA |
| | 02-291291-005 | 减速机 (单速) 220v/380v/50Hz/CN(S)A | Drive Motor 220v/380v/50Hz/CN(S)A |
| | 02-291291-006 | 减速机 (双速) 220v/380v/60Hz/CCA | Drive Motor 220v/380v/60Hz/CCA |
| | 02-291291-007 | 减速机 (双速) 220v/380v/60Hz/CNA | Drive Motor 220v/380v/60Hz/CNA |
| | 02-291291-008 | 减速机 (双速) 200v/50Hz/CCA | Drive Motor 200v/50Hz/CCA |
| | 02-291291-009 | 减速机 (双速) 200v/50Hz/CNA | Drive Motor 200v/50Hz/CNA |
| 5 | 02-602920-000 | 拉杆 | Tension Rod |
| 6 | 00-774828-002 | 过载拉簧 | Overload Tension Spring |
| 7 | 00-781117-001 | 传动盘 | Crank Plate |
| 8 | 00-154789-000 | 传动滚轮 | Drive Wheel |
| 9 | 00-781490-001 | 垫圈 | Washer |
| 10 | 00-154795-000 | 滚轮轴套 | Sleeve-Crank |
| 11 | 01-291772-001 | 传动横梁焊件 | Transport Bar |
| 12 | 01-291375-007 | 碗架焊件 | Transport Frame Assy |
| 13 | 02-291368-007 | 导轨 | Tray Guide |
| 14 | 01-291534-001 | 碗架滚轮 | Sliding Roll |
| 15 | 01-291535-001 | 滚轮轴套 | Distance Piece |
| 16 | 00-603026-000 | 内六角螺栓 M6×25 | Inner Hexagon Screw M6×25 |
| 17 | 01-243284-001 | 套管 | Sleeve-Roller |
| 18 | 01-291371-001 | 拨爪 | Dog |
| 19 | 00-602579-000 | 六角螺栓 M8×30 | Hexagon Screw M8×30 |
| 20 | 02-785286-001 | 过载开关 | Overload Switch |
| 21 | 01-291387-001 | 过载开关支座 | Holding Plate |
| 22 | 00-154791-000 | 胶皮碗 | Waterproof Cover |
| 23 | 00-600681-000 | 平键 | Parallel Key |
| 24 | 02-600683-000 | 平键 (双速) | Parallel Key(two-speed) |
| | 00-600683-000 | 平键 (单速) | Parallel Key(single) |
| 25 | 00-600682-000 | 顶丝 M8×8 | Set Screw M8×8 |
| 26 | 00-781007-001 | 密封垫 | Sealing |
| 27 | 00-868312-001 | 盖板 | Plate-Cover |
| 28 | 00-609794-000 | 沉头螺钉 M6×25 | Screw M6×25 |
| 29 | SCH-M8-55 | 六角螺栓 M8×55 | Hexagon Screw M8×55 |
| 30 | FE-022-85 | 防水接头 | Waterprof Connector |

Transport System 传动系统



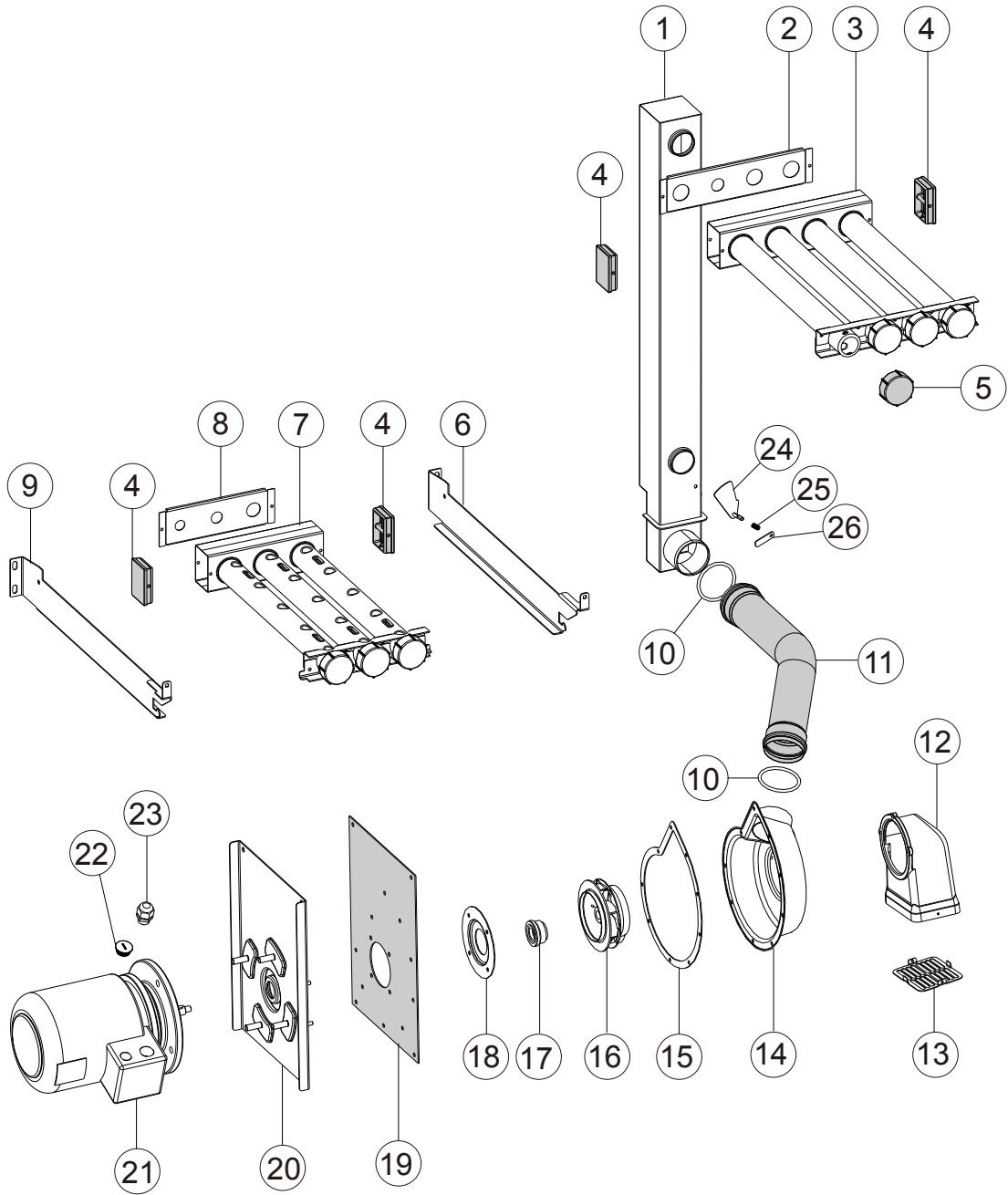
Transport System

传动系统

| Illus. 序号 | Parts No. 零件号 | Description 名称 | |
|--------------|------------------|--------------------------------|-----------------------------------|
| 1 | 02-781064-004 | 电机输出轴组件 (双速) | Flange Bearing Assy |
| | 00-781064-004 | 电机输出轴组件 (单速) | Flange Bearing Assy(single) |
| 2 | 01-291529-001 | 法兰组件 | Motor Bearing(two-speed) |
| 3 | 7159102-8 | 传动电机支架焊件 (单速) L-R | Motor Holder Assy(single) L-R |
| | 7159102-4 | 传动电机支架焊件 (单速) R-L | Motor Holder Assy(single) R-L |
| | 7159102-12 | 传动电机支架焊件 (双速) L-R | Motor Holder Assy(two-speed) L-R |
| | 7159102-16 | 传动电机支架焊件 (双速) R-L | Motor Holder Assy(two-speed) R-L |
| 4 | 02-291291-001 | 减速机 (单速) 220v/380v/50Hz/CCA | Drive Motor 220v/380v/50Hz/CCA |
| | 02-291291-002 | 减速机 (单速) 220v/380v/50Hz/CC(S)A | Drive Motor 220v/380v/50Hz/CC(S)A |
| | 02-291291-003 | 减速机 (双速) 220v/380v/50Hz/CCA | Drive Motor 220v/380v/50Hz/CCA |
| | 02-291291-004 | 减速机 (双速) 220v/380v/50Hz/CNA | Drive Motor 220v/380v/50Hz/CNA |
| | 02-291291-005 | 减速机 (单速) 220v/380v/50Hz/CN(S)A | Drive Motor 220v/380v/50Hz/CN(S)A |
| | 02-291291-006 | 减速机 (双速) 220v/380v/60Hz/CCA | Drive Motor 220v/380v/60Hz/CCA |
| | 02-291291-007 | 减速机 (双速) 220v/380v/60Hz/CNA | Drive Motor 220v/380v/60Hz/CNA |
| | 02-291291-008 | 减速机 (双速) 200v/50Hz/CCA | Drive Motor 200v/50Hz/CCA |
| | 02-291291-009 | 减速机 (双速) 200v/50Hz/CNA | Drive Motor 200v/50Hz/CNA |
| 5 | 02-602920-000 | 拉杆 | Tension Rod |
| 6 | 00-774828-002 | 过载拉簧 | Overload Tension Spring |
| 7 | 00-781117-001 | 传动盘 | Crank Plate |
| 8 | 01-296150-001 | 传动滑块 | Drive Slider |
| 9 | FE-022-85 | 防水接头 | Waterproof Connector |
| 10 | 00-154795-000 | 滚轮轴套 | Sleeve-Crank |
| 11 | 01-291772-001 | 传动横梁焊件 | Transport Bar |
| 12 | 01-291375-007 | 碗架焊件 | Transport Frame Assy |
| 13 | 02-291368-007 | 导轨 | Tray Guide |
| 14 | 01-291534-001 | 碗架滚轮 | Sliding Roll |
| 15 | 01-291535-001 | 滚轮轴套 | Distance Piece |
| 16 | 00-603026-000 | 内六角螺栓 M6×25 | Inner Hexagon Screw M6×25 |
| 17 | 01-243284-001 | 套管 | Sleeve-Roller |
| 18 | 01-291371-001 | 拨爪 | Dog |
| 19 | 00-602579-000 | 六角螺栓 M8×30 | Hexagon Screw M8×30 |
| 20 | 02-785286-001 | 过载开关 | Overload Switch |
| 21 | 01-291387-001 | 过载开关支座 | Holding Plate |
| 22 | 00-154791-000 | 胶皮碗 | Waterproof Cover |
| 23 | 00-600681-000 | 平键 | Parallel Key |
| 24 | 02-600683-000 | 平键 (双速) | Parallel Key(two-speed) |
| | 00-600683-000 | 平键 (单速) | Parallel Key(single) |
| 25 | 00-600682-000 | 顶丝 M8×8 | Set Screw M8×8 |
| 26 | 00-781007-001 | 密封垫 | Sealing |
| 27 | 00-868312-001 | 盖板 | Plate-Cover |
| 28 | 00-609794-000 | 沉头螺钉 M6×25 | Screw M6×25 |
| 29 | SCH-M8-55 | 六角螺栓 M8×55 | Hexagon Screw M8×55 |

Wash System

清洗系统



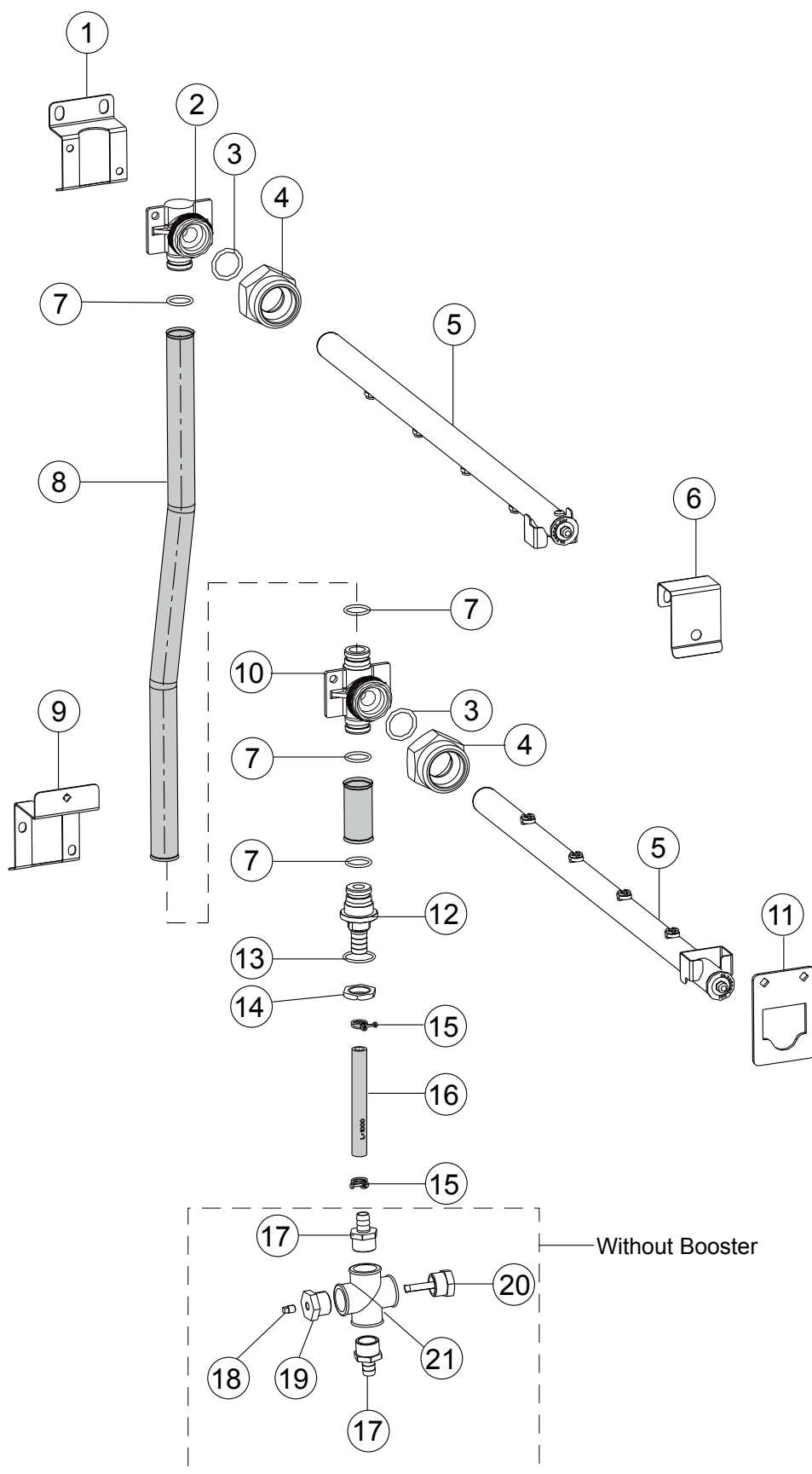
Wash System

清洗系统

| Illus. 序号 | Parts No. 零件号 | Description 名称 | |
|--------------|------------------|--|--|
| 1 | 7159138-9 | 清洗立管 | Manifold |
| 2 | 7159111-1 | 节流片 | Throttle |
| 3 | 01-291302-009 | 上洗臂总成 L-R | Wash Arm Assy L-R |
| | 01-291302-011 | 上洗臂总成 R-L | Wash Arm Assy R-L |
| 4 | 01-245086-001 | 主洗臂管堵板 | End Cap |
| 5 | 01-245084-002 | 洗臂堵 | Plug-Wash Pipe |
| 6 | 01-291358-001 | 下洗臂右连接板 | Wash Arm Guide |
| 7 | 01-291302-010 | 下洗臂总成 L-R | Wash Arm Assy L-R |
| | 01-291302-012 | 下洗臂总成 R-L | Wash Arm Assy R-L |
| 8 | 7159111-2 | 节流片 | Throttle |
| 9 | 01-291358-002 | 下洗臂左连接板 | Wash Arm Guide |
| 10 | 02-245340-003 | O型圈 63×5.3 | O-Ring 63×5.3 |
| 11 | 01-245277-001 | 清洗泵出水管 | Pressure Pipe |
| 12 | 01-245713-001 | 泵头入口罩 | Intake Part |
| 13 | 01-245377-002 | 过滤罩 | Intake Strainer |
| 14 | 01-245135-004 | 泵壳 L-R | Pump Housing Compl L-R |
| | 01-245135-005 | 泵壳 R-L | Pump Housing Compl R-L |
| 15 | 01-245459-001 | 泵壳密封圈 | Pump Shell Sealing |
| 16 | 01-245162-003 | 叶轮 L-R | Impeller L-R |
| | 01-245088-003 | 叶轮 R-L | Impeller R-L |
| 17 | 01-245033-002 | 轴封 | Seal |
| 18 | 01-245379-001 | 泵壳法兰片 | Pump Shell Flange |
| 19 | 01-245386-002 | 密封垫 | Seal Waschpump |
| 20 | 01-245835-003 | 泵壳连接板焊件 L-R | Bracket Plate Assy L-R |
| | 01-245835-004 | 泵壳连接板焊件 R-L | Bracket Plate Assy R-L |
| 21 | 01-245176-013 | 清洗泵电机 220-240V/380-415V/50Hz/3Φ | Motor-Wash Pump 220-240V/380-415V/50Hz/3Φ |
| | 01-245176-016 | 清洗泵电机 200V/50Hz/3Φ 200-220V/346-380V/60Hz/3Φ | Motor-Wash Pump 200V/50Hz/3Φ 200-220V/346-380V/60Hz/3Φ |
| 22 | 7159131-1 | 堵头 | Plug |
| 23 | 02-695661-003 | 防水接头 | Waterprof Connector |
| 24 | 7159138-8 | 节流片焊件 | Throttle |
| 25 | 7154047 | 弹簧 | Spring |
| 26 | 7159138-5 | 拨抓 | Dog |

Rinse System

喷淋系统



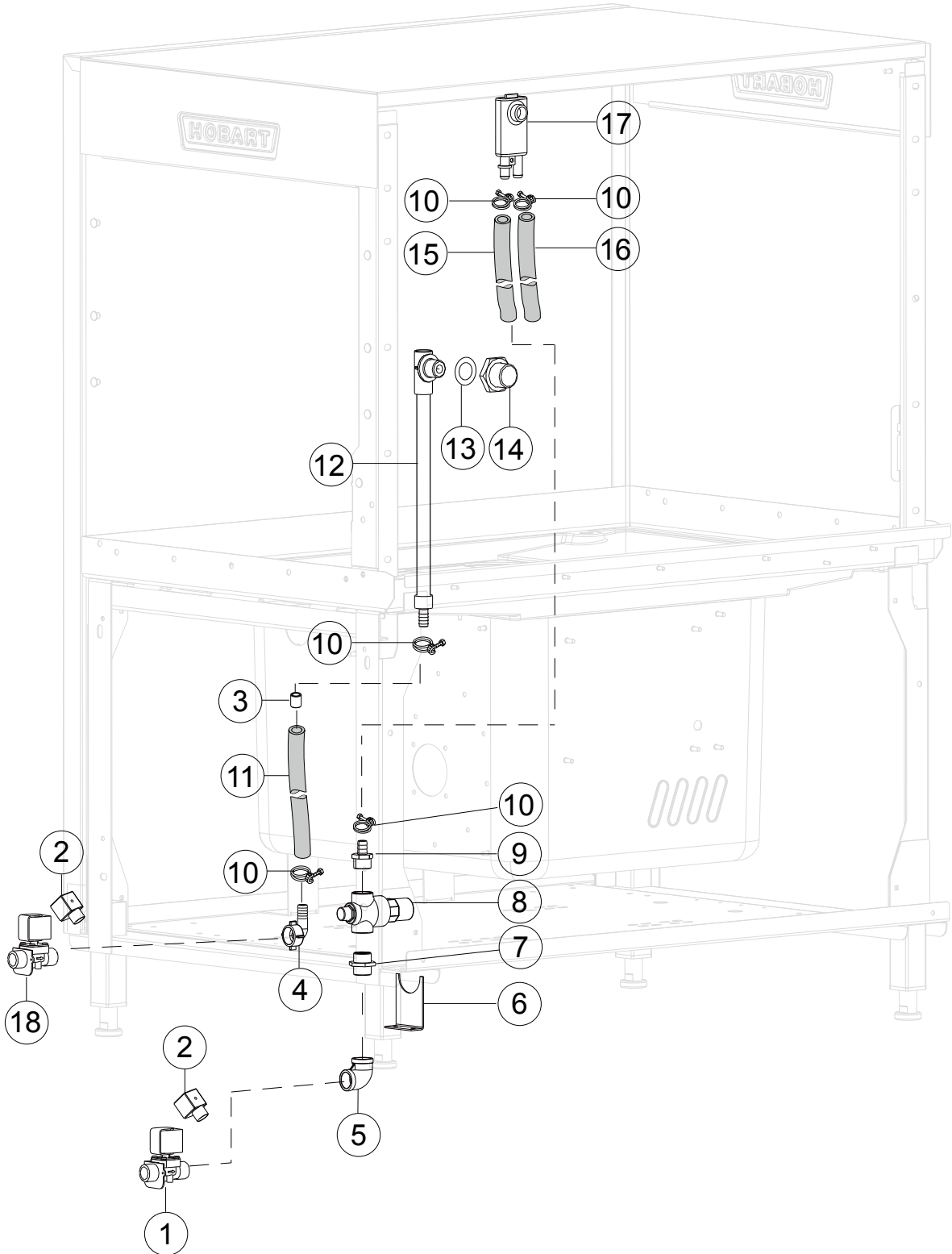
Rinse System

喷淋系统

| Illus. 序号 | Parts No. 零件号 | Description 名称 | |
|--------------|------------------|-------------------|-------------------------|
| 1 | 01-291337-001 | 喷淋立管上支板 | Holding Plate |
| 2 | 01-245318-002 | 上三通 | T-Piece |
| 3 | 02-884505-002 | O 形圈 25×3.55 | O-Ring 25×3.55 |
| 4 | 00-885572-001 | 螺母 | Nut |
| 5 | 01-291340-001 | 喷臂组件 | Rinse Pipe |
| 6 | 01-245062-001 | 上喷臂挡片 | Retaining Spring |
| 7 | 02-245340-001 | O 形圈 20×2.65 | O-Ring 20×2.65 |
| 8 | 01-245323-003 | 喷淋立管 | Stand Pipe Rinse |
| 9 | 01-291341-001 | 喷淋立管下支板 | Holding Plate |
| 10 | 01-245318-001 | 下三通 | T-Piece |
| 11 | 01-291351-001 | 下喷臂挡片 | Rinse Arrest Plate Base |
| 12 | 01-245329-001 | 接头 | Nipple |
| 13 | 02-245340-002 | O 形圈 26.5×2.65 | O-Ring 26.5×2.65 |
| 14 | 00-172739-009 | 锁母 | Lock Nut |
| 15 | 00-323945-022 | 喉箍 22 | Hose Clamp 22 |
| 16 | 7159125-32 | 胶管 | Hose |
| 17 | 743284 | 宝塔接头 | Union |
| 18 | FP-028-03 | 堵头 | Plug |
| 19 | FP-084-56 | 补芯 | Bushing |
| 20 | 7159141-3 | 测温管焊件 | Temperature Tube |
| 21 | 7159140-1 | 四通 | Cross Tee |

Fill System

注水系统



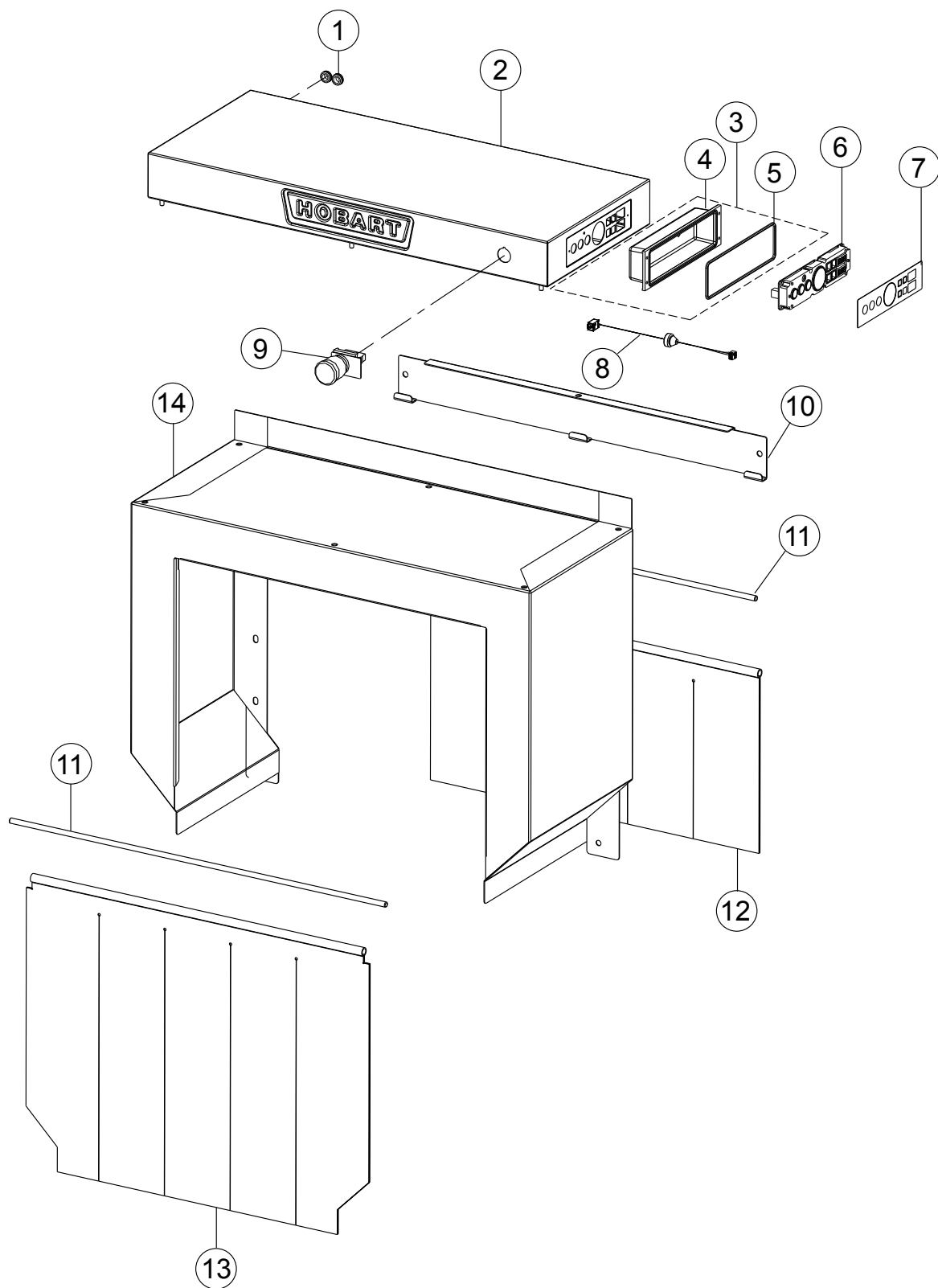
Fill System

注水系统

| Illus. 序号 | Parts No. 零件号 | Description 名称 | |
|--------------|------------------|-------------------|------------------------|
| 1 | 00-297808-010 | 进水电磁阀 | Magnetic Valve |
| 2 | 02-228905-001 | 接头 | Connector Jack |
| 3 | 7159136-1 | 节流芯 | Throttle |
| 4 | 00-299240-001 | 胶管弯头 | Elbow |
| 5 | 7155303-9 | 弯头 | Elbow |
| 6 | 7159121-1 | 减压阀支架 | Valve Braket |
| 7 | 743848 | 外丝 | Nipple |
| 8 | 7155314-3 | 减压阀 | Valve |
| 9 | 743284 | 宝塔接头 | Union |
| 10 | 00-323945-022 | 喉箍 22 | Hose Clamp 22 |
| 11 | 7159125-35 | 胶管 | Tube |
| 12 | 00-897686-001 | 注水立管合件 | Inlet Pipe Assy |
| 13 | 7159145-1 | O 型圈 26.3X5.3 | O Ring 26.3X5.3 |
| 14 | 00-774670-001 | 挡水母 | Cover Nut |
| 15 | 7159125-37 | 胶管 | Tube |
| 16 | 7159125-34 | 胶管 (无 Booster) | Tube (without Booster) |
| 17 | 00-775759-001 | 气隙盒 (带 Booster) | Air Gap (with Booster) |
| 18 | 00-297808-012 | 进水电磁阀 | Magnetic Valve |

Entry Hood

入口风罩焊件



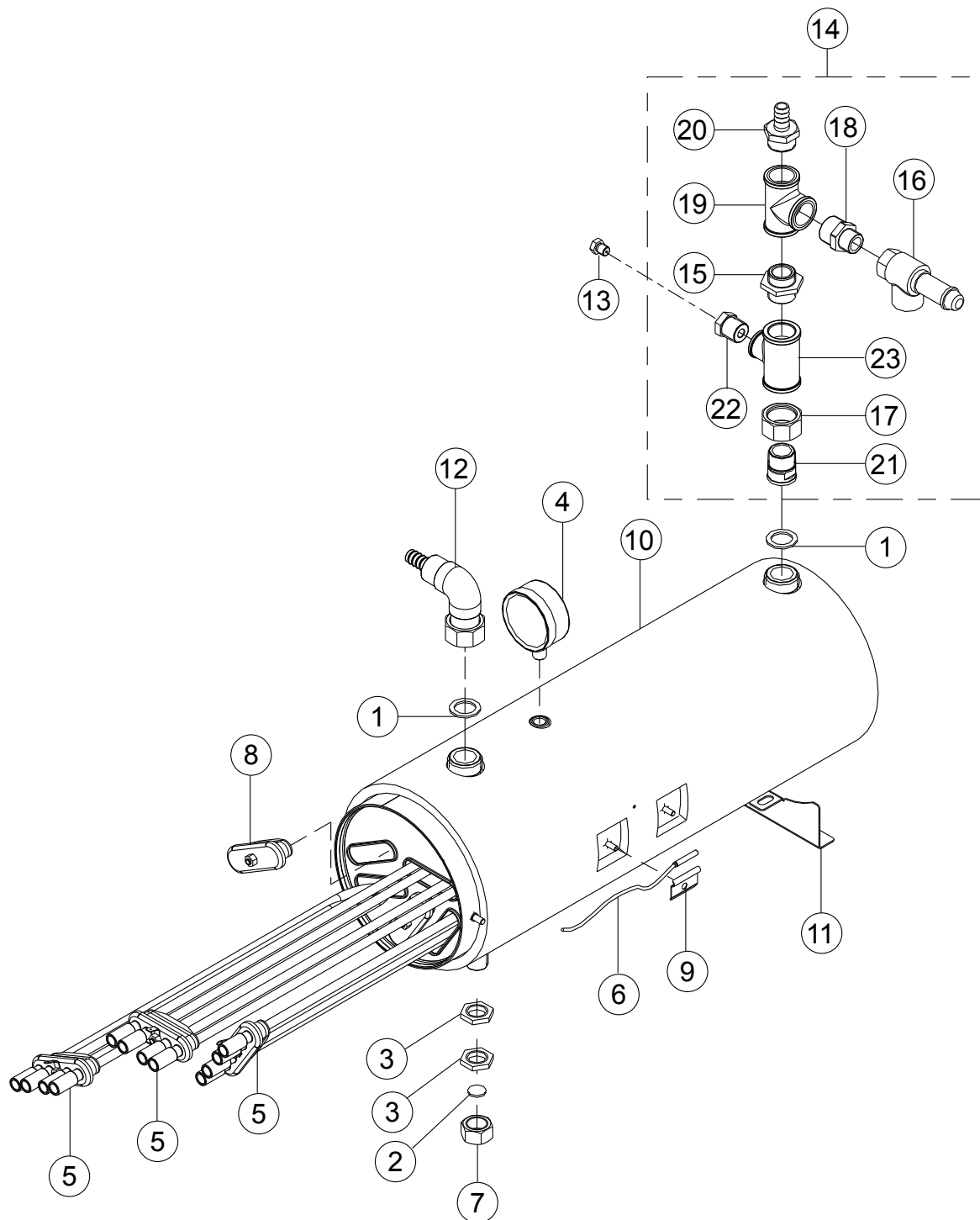
Entry Hood

入口风罩焊件

| Illus. | Parts No. | Description | |
|---------------|------------------|--------------------|-----------------------|
| 序号 | 零件号 | 名称 | |
| 1 | 00-227748-001 | 过线胶圈 | Gland Cable |
| 2 | 01-291406-001 | 顶罩合件 L-R | Display Hood Assy L-R |
| | 01-291406-002 | 顶罩合件 R-L | Display Hood Assy R-L |
| 3 | 00-883984-001 | BAE 外罩合件 | BAE Cover Assy |
| 4 | 00-883986-001 | BAE 外罩 | BAE Cover |
| 5 | 00-883805-001 | BAE 外罩密封圈 | BAE Cover Seal |
| 6 | 00-897540-002 | BAE 组件 | BAE Fully Equiped |
| 7 | 01-291845-001 | 面板贴面 | Keyboard Foil CNT |
| 8 | 01-249757-001 | BAE 线束 | Wiring Harness BAE |
| 9 | 01-291707-001 | 急停开关 | Emergence Switch |
| 10 | 01-291538-002 | 门帘安装板 | Curtain Holder |
| 11 | 01-245396-006 | 门帘棍 | Curtain Rod |
| 12 | 01-291315-002 | 短门帘 | Curtain |
| 13 | 01-291315-001 | 长门帘 | Curtain |
| 14 | 01-291402-001 | 入口风罩焊件 | Hood Assy |

Booster

助热器总成



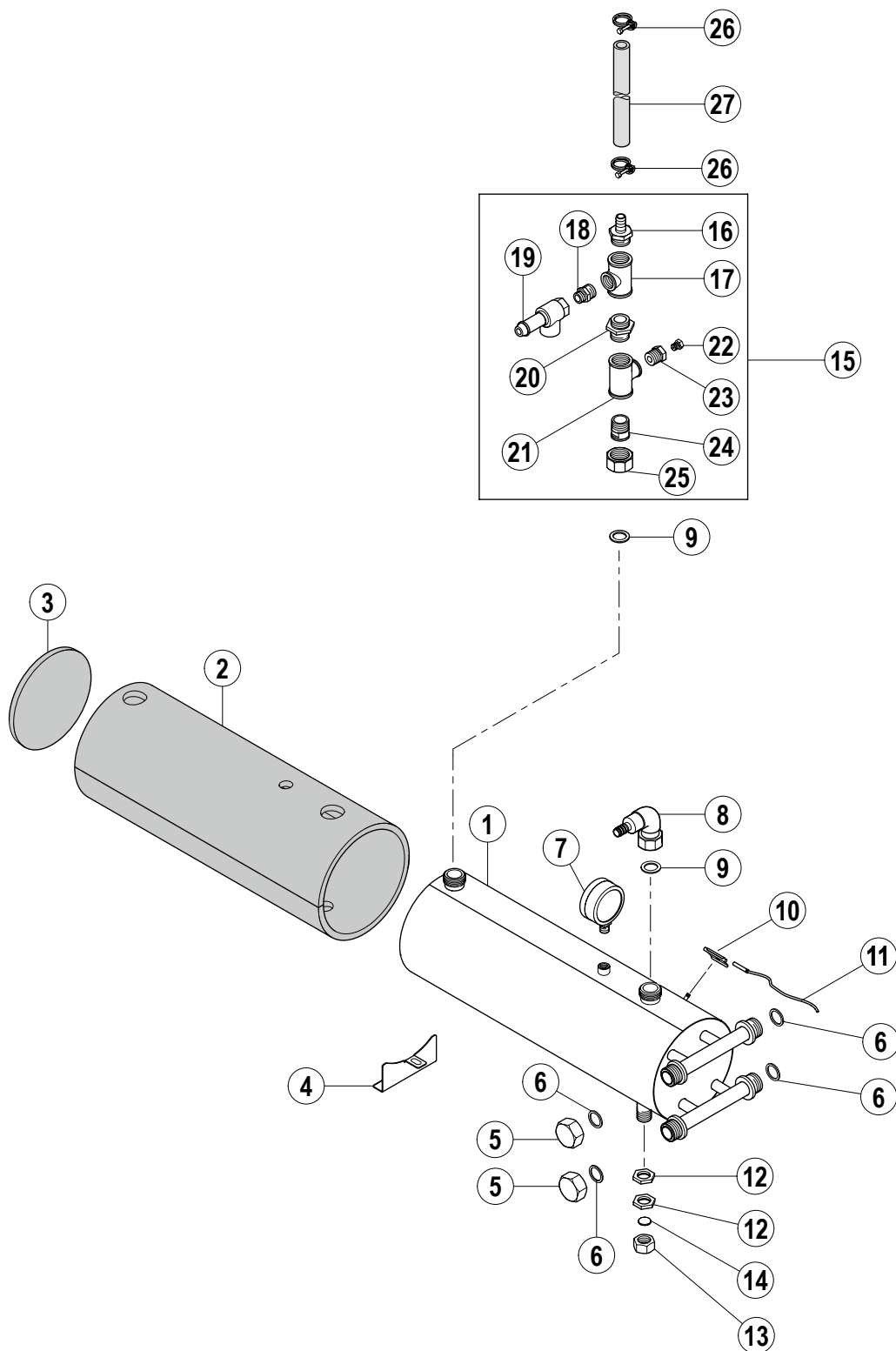
Booster

助热器总成

| Illus. | Parts No. | Description | |
|--------|---------------|----------------------|--|
| 序号 | 零件号 | 名称 | |
| 1 | 00-168611-003 | 垫圈 φ21 | Gasket φ21 |
| 2 | 00-168611-022 | 密封垫 | Sealing |
| 3 | 00-172739-001 | 锁母 | Nut |
| 4 | 00-229583-001 | BOOSTER 压力表 | Pressure Gauge |
| 5 | 02-324637-001 | 电热管 220V 6kW | Heating Element 220V 6kW |
| | 02-324637-002 | 电热管 220V 4kW | Heating Element 220V 4kW |
| | 02-324637-003 | 电热管 200V 6kW | Heating Element 200V 6kW |
| | 02-324637-004 | 电热管 200V 4kW | Heating Element 200V 4kW |
| | 02-324637-005 | 电热管 220V 5kW | Heating Element 220V 5kW |
| 6 | 00-775612-001 | 温度探头 (For CCA-smart) | Temperature Probe-Booster(For CCA-smart) |
| 7 | 00-600588-000 | 盖母 | Cover Nut |
| 8 | 02-774808-001 | 堵头 | Plug |
| 9 | 00-775489-001 | 温度探头压片 | Fix Plate |
| 10 | 00-897683-001 | BOOSTER 筒体合件 | Booster Assy |
| 11 | 01-243201-001 | BOOSTER 支板 | Booster Bracket |
| 12 | 01-245560-001 | 弯头组件 | Inlet Assy |
| 13 | FP-028-03 | 堵头 | Plug |
| 14 | 01-244435-002 | 升温箱进水组件 | Booster Inlet Assy |
| 15 | 00-227931-000 | 联接头 | Nipple |
| 16 | 00-229621-001 | 安全阀 | Safe Valve |
| 17 | 00-600806-000 | 锁母 | Lock Nut |
| 18 | 00-602757-000 | 外丝 | Nipple |
| 19 | 00-603163-000 | 三通 | Tee |
| 20 | 00-897680-001 | 宝塔接头 | Union |
| 21 | 01-291286-001 | 联接头 | Nipple |
| 22 | 01-291287-001 | 补芯 | Bushing |
| 23 | 01-291288-001 | 三通 | Tee |

Booster(Steam)

助热器总成 (蒸汽型)



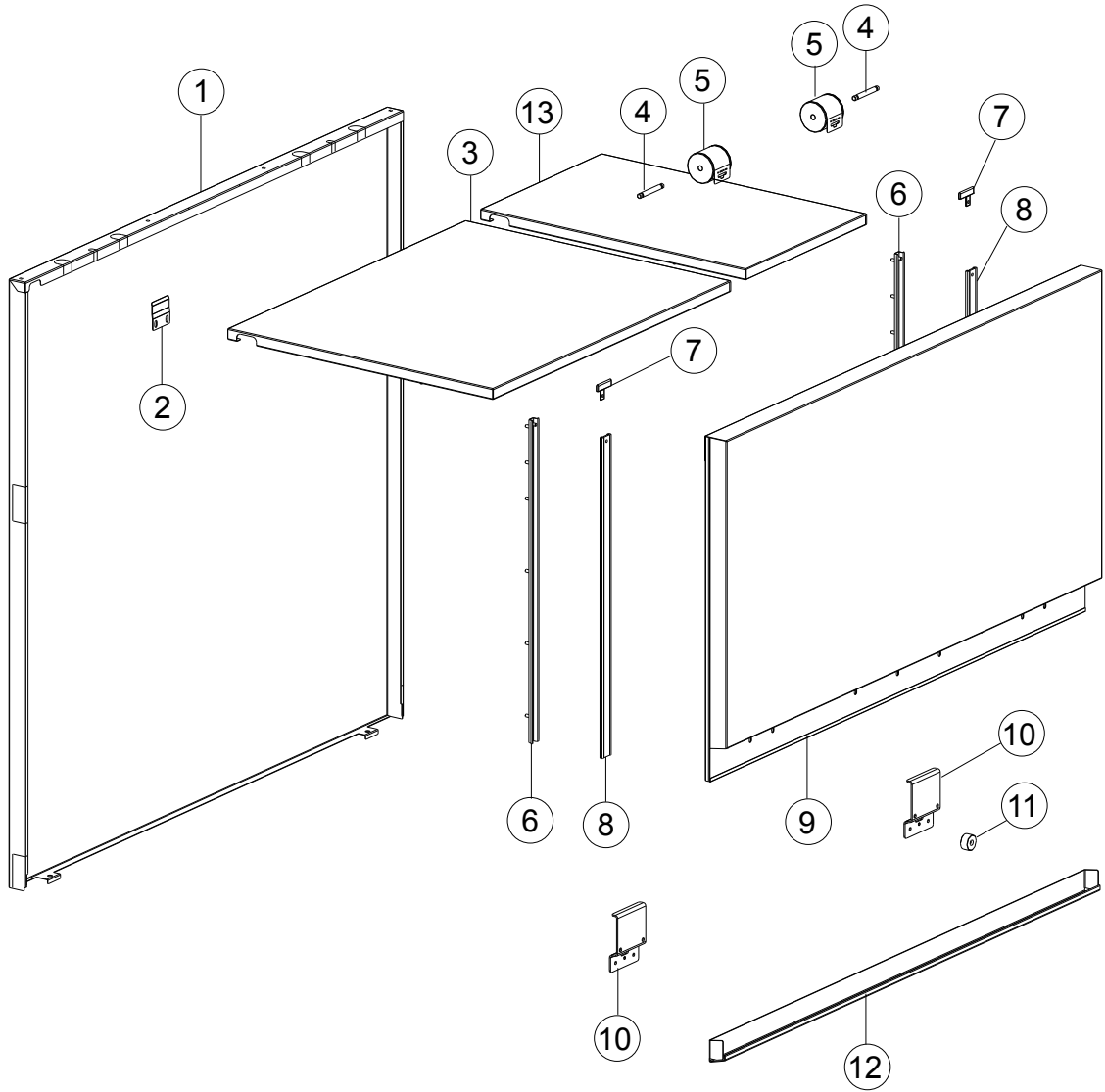
Booster(Steam)

助热器总成（蒸汽型）

| Illus. | Parts No. | Description | |
|--------|---------------|---------------|-----------------------------|
| 序号 | 零件号 | 名称 | |
| 1 | 01-245602-002 | 升温箱组件 | Booster Assy |
| 2 | 00-897657-001 | BOOSTER 筒体保温垫 | Booster Insulation |
| 3 | 00-897657-002 | BOOSTER 端盖保温垫 | Booster Cover Insulation |
| 4 | 01-243201-001 | BOOSTER 支板 | Booster Braket |
| 5 | 01-245605-001 | 盖母 | Cover Nut |
| 6 | 00-302574-014 | 密封垫圈 | Gasket |
| 7 | 00-229583-001 | BOOSTER 压力表 | Pressure Gauge |
| 8 | 01-245560-001 | 弯头组件 | Fitting Detergent Injection |
| 9 | 00-168611-003 | 垫圈 $\phi 21$ | Washer 21 |
| 10 | 00-775489-001 | 温度探头压片 | Fix Plate |
| 11 | 00-775612-001 | 温度传感器 | Temperature Probe |
| 12 | 00-172739-001 | 锁母 | Nut |
| 13 | 00-600588-000 | 盖母 | Cover Nut |
| 14 | 00-168611-022 | 密封垫 | Gasket |
| 15 | 01-244435-002 | BOOSTER 出水管组件 | Piping- Booster Outlet |
| 16 | 00-897680-001 | 宝塔接头 | Union |
| 17 | 00-603163-000 | 三通 | Tee |
| 18 | 00-602757-000 | 外丝 | Nipple |
| 19 | 00-229621-001 | 安全阀 | Safe Valve |
| 20 | 00-227931-000 | 联接头 | Nipple |
| 21 | 01-291288-001 | 三通 | Tee |
| 22 | FP-028-03 | 堵头 | Plug |
| 23 | 01-291287-001 | 补芯 | Bushing |
| 24 | 01-291286-001 | 联接头 | Nipple |
| 25 | 00-600806-000 | 锁母 | Nut |
| 26 | 00-323945-022 | 喉箍 22 | Clamp 22 |
| 27 | 7159125-38 | 胶管 | Hose |

Door and Insulation

隔热板组件



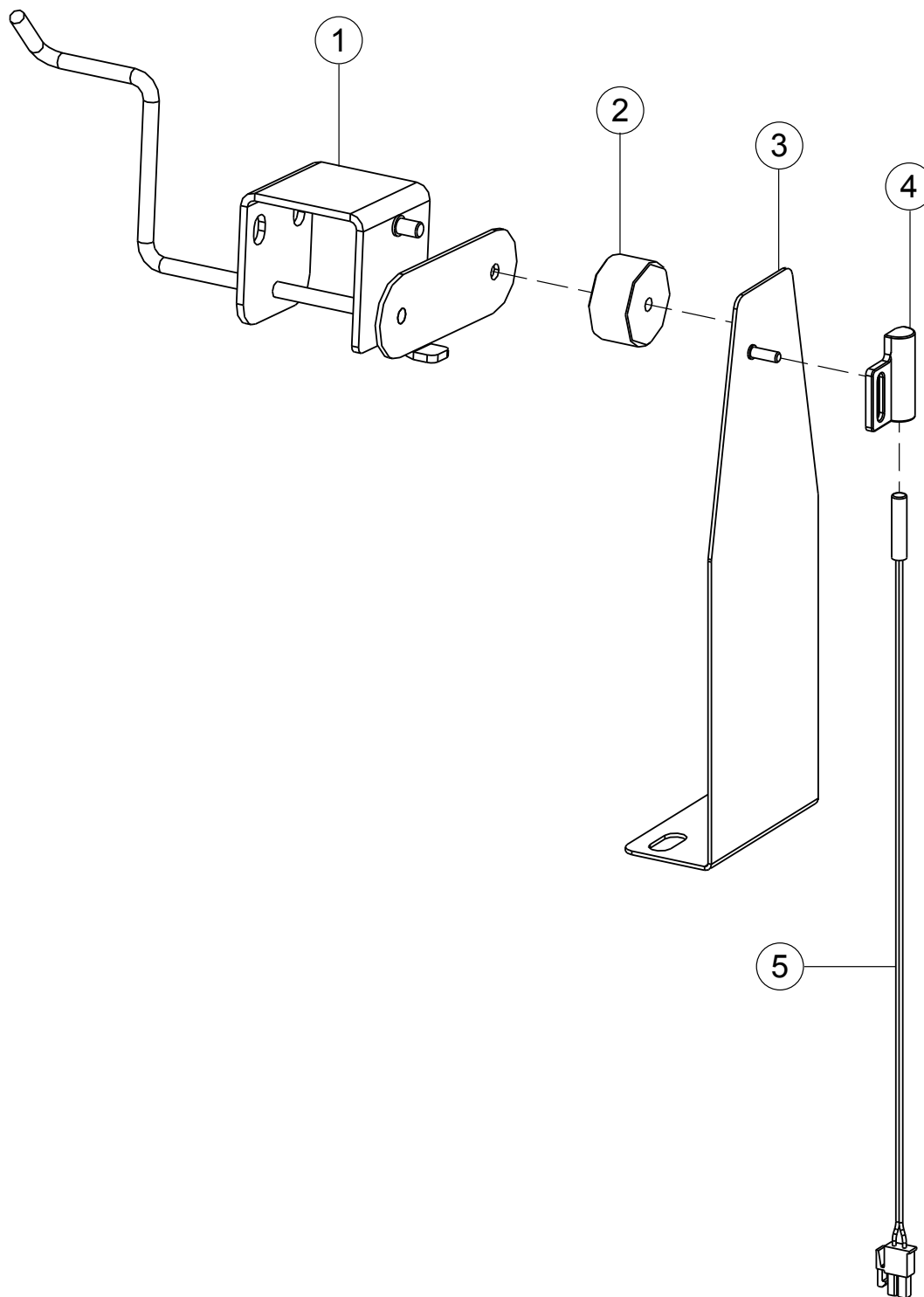
Door and Insulation

隔热板组件

| Illus. | Parts No. | Description | |
|---------------|------------------|--------------------|--|
| 序号 | 零件号 | 名称 | |
| 1 | 02-291317-007 | 隔热背板 | Back Panel |
| 2 | 01-291605-001 | 支板 | Holder Back Panel |
| 3 | 7159117-5 | 隔热顶板焊件 | Ceiling Insulation |
| 4 | 01-245281-001 | 卷簧轴 | Axle |
| 5 | 01-245278-005 | 卷簧总成 | Door Spring |
| | 01-245278-003 | 卷簧总成 (不带隔热) | Door Spring(Without insulation) |
| 6 | 01-245126-003 | 门导轨焊件 | Profile |
| 7 | 01-291426-001 | 挡汽块 | Steam Baffle Door |
| 8 | 00-325064-008 | 门滑块 | Slider |
| 9 | 7159112-2 | 隔热门板焊件 | Insulate Door |
| | 7159112-3 | 门板焊件 (不带隔热) | Door(Without insulation) |
| 10 | 01-245127-001 | 磁铁架 | Door Stopper |
| 11 | 00-774714-001 | 门磁铁 | Magnet |
| 12 | 02-245129-007 | 门把手焊件 | Door Handle |
| 13 | 7159117-12 | 隔热顶板焊件 (仅用于不带排风) | Ceiling Insulation(only without exhaust) |

Auto Timer (only CCA-smart)

触发开关组件 (仅 CCA-smart)



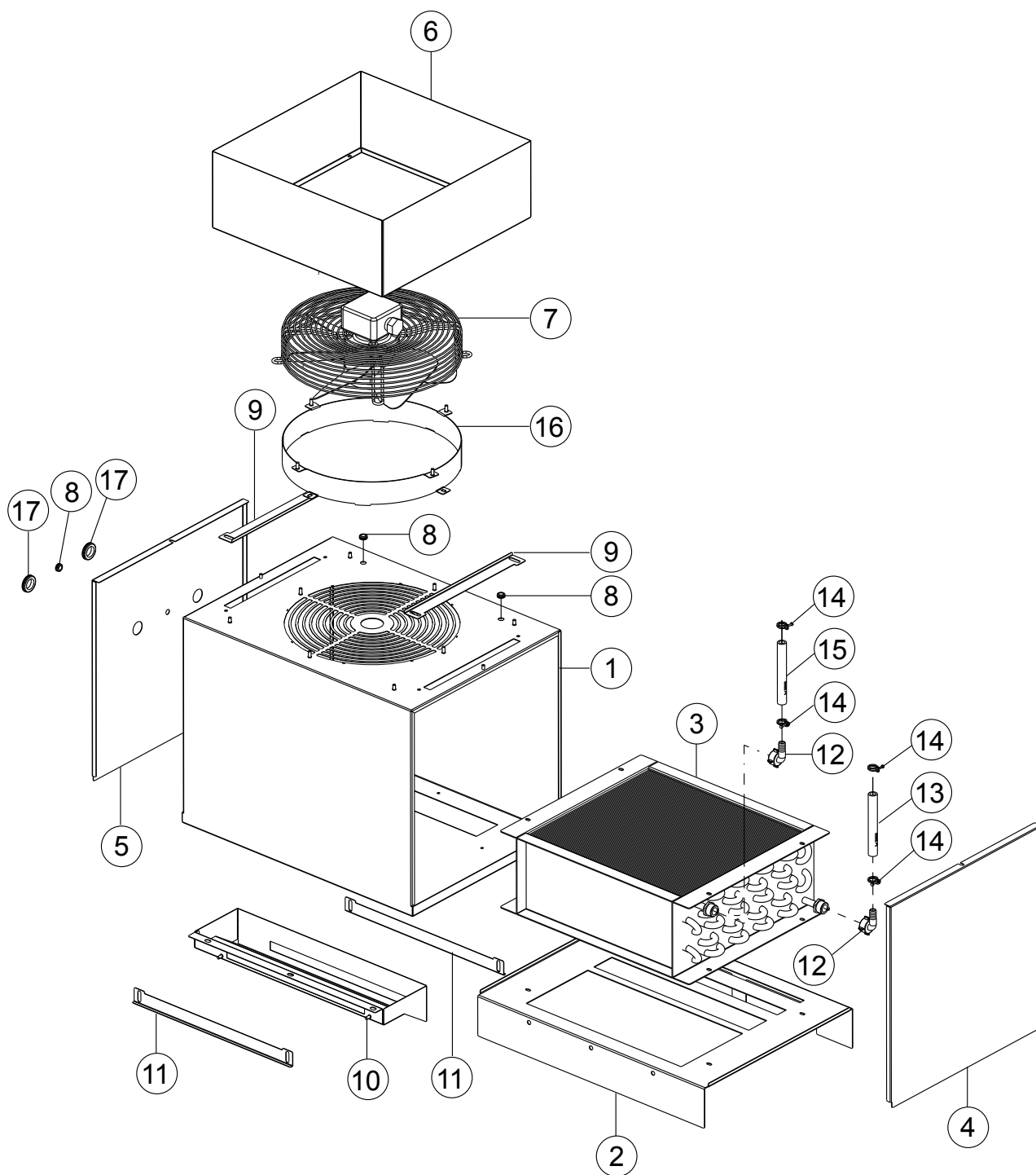
Auto Timer(only CCA-smart)

触发开关组件（仅 CCA-smart）

| Illus. 序号 | Parts No. 零件号 | Description 名称 | |
|---------------------|-------------------------|--------------------------|------------------------|
| 1 | 01-242189-001 | 磁铁架组件 L-R | Magnet Braket Assy L-R |
| | 01-242189-002 | 磁铁架组件 R-L | Magnet Braket Assy R-L |
| 2 | 00-774714-001 | 门磁铁 | Magnet |
| 3 | 7159133-2 | 磁开关支架 | Holder Reed Switch |
| 4 | 00-883838-001 | 磁开关压板 | Switch Holder |
| 5 | 01-240288-001 | 磁开关总成 | Magnetic Switch |

Heat Recovery(Optional)

热回收组件(可选)



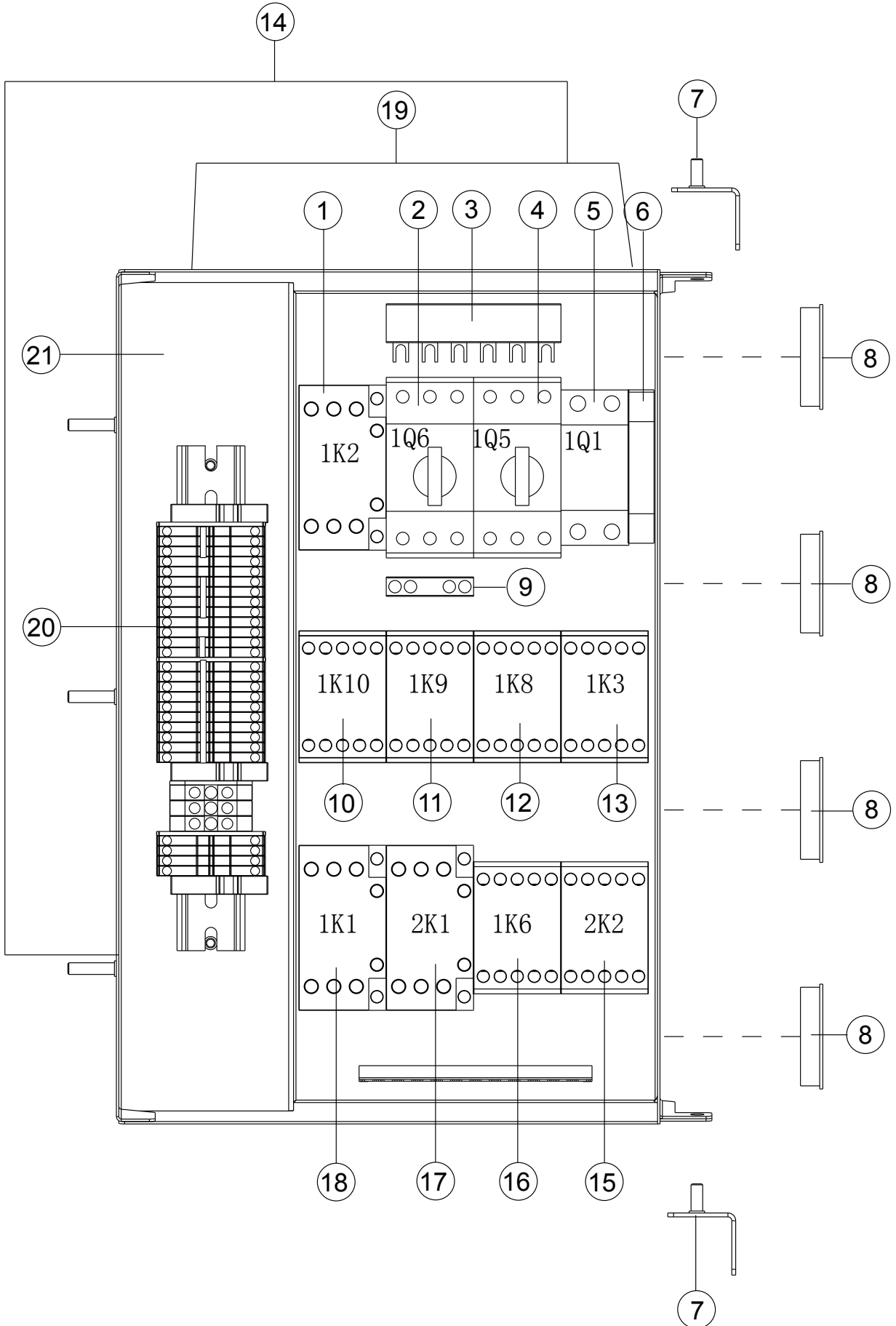
Heat Recovery

热回收组件

| Illus. 序号 | Parts No. 零件号 | Description 名称 | |
|--------------|------------------|-------------------|-------------------|
| 1 | 01-291392-001 | 排汽外罩组件 | Exhaust |
| 2 | 01-245274-004 | 冷凝器底座 | Condensator Board |
| 3 | 02-245490-007 | 冷凝器 | Condensator |
| 4 | 01-245206-001 | 排汽罩前盖板 | Panel-Front |
| 5 | 01-245206-003 | 排汽罩后盖板 | Panel-Rear |
| 6 | 01-245744-002 | 排风扇外罩 | Exhaust Box |
| 7 | 02-781492-001 | 排风扇 220V 50Hz | Fan 220V 50Hz |
| | 02-781492-002 | 排风扇 220V 60Hz | Fan 220V 60Hz |
| 8 | 00-227748-001 | 过线胶圈 | Gland Cable |
| 9 | 01-291395-002 | 调节板 | Gate |
| 10 | 01-291394-001 | 通汽道焊件 L-R | Air Channel L-R |
| | 01-291394-002 | 通汽道焊件 R-L | Air Channel R-L |
| 11 | 01-291395-001 | 调节板 | Gate |
| 12 | 00-299240-001 | 胶管弯头 | Elbow |
| 13 | 7159125-39 | 胶管 | Hose |
| 14 | 00-323945-022 | 喉箍 22 | Hose Clamp 22 |
| 15 | 7159125-38 | 胶管 | Hose |
| 16 | 00-781377-002 | 排风扇支架 | Fan Bracket |
| 17 | 00-227748-004 | 过线胶圈 | Gland Cable |

Switch Box(Easytronic)

电器箱装配 (Easytronic)



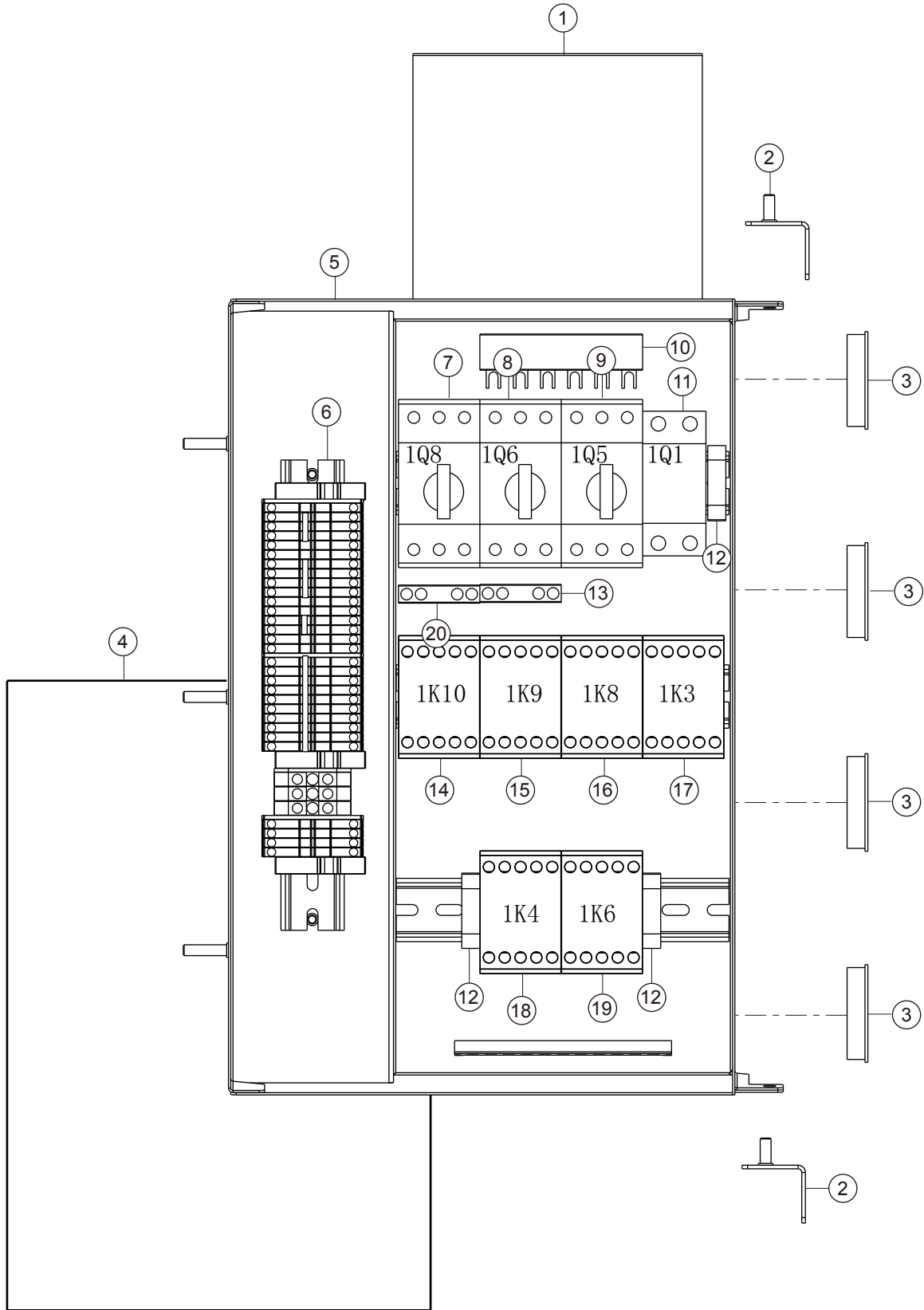
Switch Box(Easytronic)

电器箱装配 (Easytronic)

| Illus. | Parts No. | Description | |
|--------|---------------|----------------------|-------------------------|
| 序号 | 零件号 | 名称 | |
| 1 | 02-296926-001 | 接触器 DILM25 10C 1K2 | Contactor |
| 2 | 02-695523-005 | 电机保护开关 PKZMC-1 1Q6 | Motor Protection Switch |
| 3 | 02-785429-001 | 三相适配器 B3.0/2-PKZ0 | Three Phase Adaptor |
| 4 | 02-695523-009 | 电机保护开关 PKZMC-6.3 1Q5 | Motor Protection Switch |
| 5 | 02-301777-002 | 两相断路器 PL9-D6/2 1Q1 | Circuit Breaker |
| 6 | WAGO249 | 挡块 | Block |
| 7 | 01-245228-002 | 支架焊件 | Braket |
| 8 | 00-886756-001 | 过线胶圈 | Cable Bushing |
| 9 | 02-695524-001 | 辅助模块 NHI-E-11-PKZ0 | Auxiliary Contact |
| 10 | 02-695521-004 | 接触器 DILM07 01C 1K10 | Contactor |
| 11 | 743402-3 | 接触器 DILM07 10C 1K9 | Contactor |
| 12 | 743402-3 | 接触器 DILM07 10C 1K8 | Contactor |
| 13 | 02-695521-001 | 接触器 DILM09 10C 1K3 | Contactor |
| 14 | 7159125-21 | 挡水帘 | Waterscreen |
| 15 | 743402-3 | 接触器 DILM07 10C 2K2 | Contactor |
| 16 | 02-695521-004 | 接触器 DILM07 01C 1K6 | Contactor |
| 17 | 743402-3 | 接触器 DILM07 10C 2K1 | Contactor |
| | 02-296926-001 | 接触器 DILM25 10C 1K1 | Contactor |
| 18 | 02-296926-001 | 接触器 DILM25 10C 1K1 | Contactor |
| 19 | 00-374384-000 | 图纸袋 | Diagram Bag |
| 20 | 02-785509-003 | 接线排 | Terminals |
| 21 | 7159115-5 | 电器箱焊件 L-R | Control Box L-R |
| | 7159115-6 | 电器箱焊件 R-L | Control Box R-L |

Switch Box(Easytronic-steam heating)

电器箱装配 (Easytronic- 蒸汽加热)



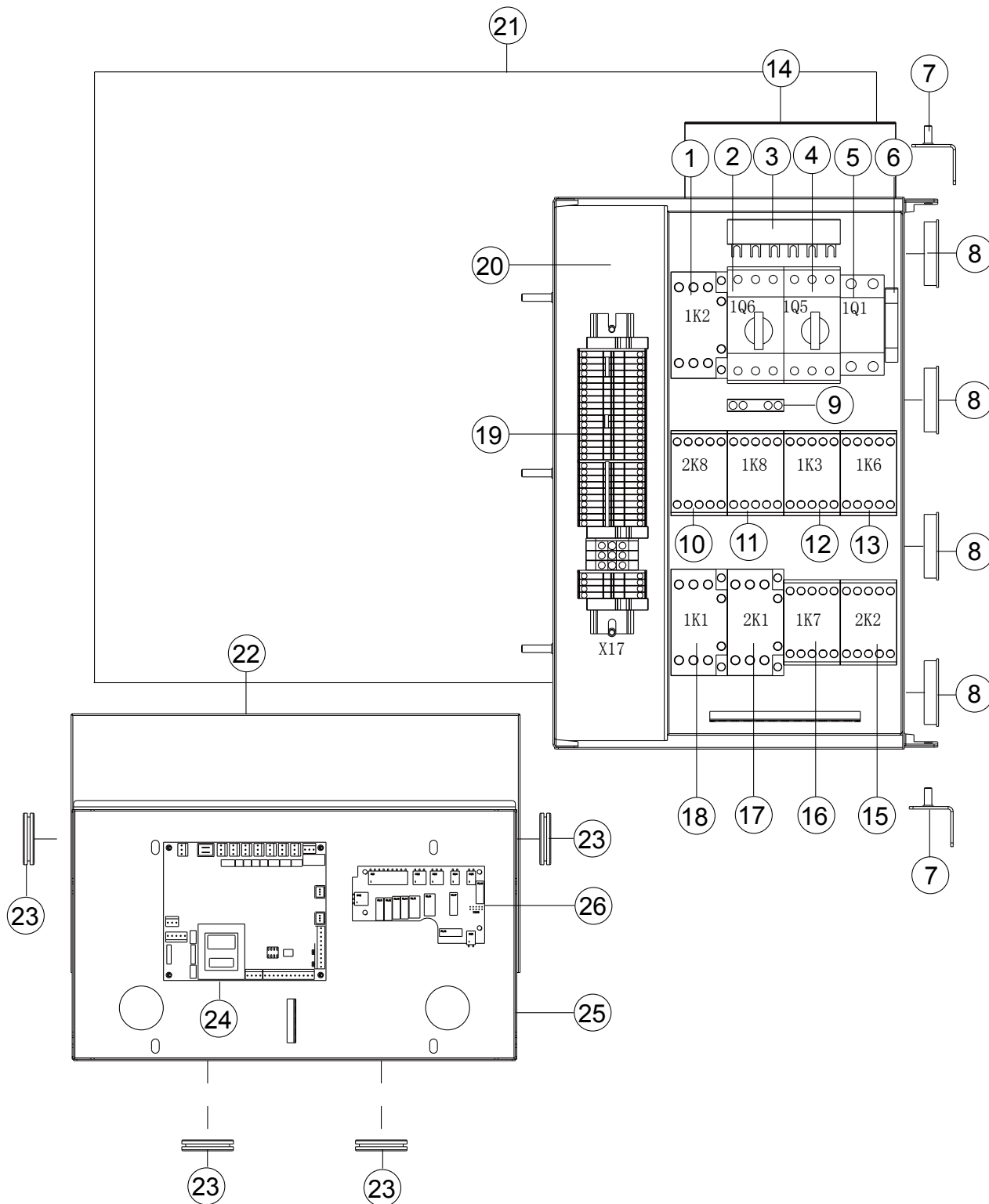
Switch Box(Easytronic-steam heating)

电器箱装配 (Easytronic- 蒸汽加热)

| Illus. | Parts No. | Description | |
|--------|---------------|---|--|
| 序号 | 零件号 | 名称 | |
| 1 | 02-374384-001 | 图纸袋 | Diagram bag |
| 2 | 01-245228-002 | 支架焊件 | Bracket |
| 3 | 00-886756-001 | 过线胶圈 | Cable bushing |
| 4 | 7159125-21 | 挡水帘 | Waterscreen |
| 5 | 7159115-5 | 电器箱焊件 L-R | Control box L-R |
| | 7159115-6 | 电器箱焊件 R-L | Control box R-L |
| 6 | 02-785509-003 | 端子排 | Terminal |
| 7 | 02-695523-006 | 马达保护开关 PKZMC-1.6 1Q8 | Motor protector PKZMC-1.6 1Q8 |
| | 02-695523-007 | 马达保护开关 PKZMC-2.5 1Q8 (仅 220/200V 机型) | Motor protector PKZMC-2.5 1Q8 (for 220/200V) |
| 8 | 02-695523-005 | 马达保护开关 PKZMC-1 1Q6 | Motor protector PKZMC-1 1Q6 |
| | 02-695523-008 | 马达保护开关 PKZMC-4 1Q6 (仅 220/200V 机型) | Motor protector PKZMC-4 1Q6 (only 220/200V) |
| 9 | 02-695523-009 | 马达保护开关 PKZMC-6.3 1Q5 | Motor protector PKZMC-6.3 1Q5 |
| | 02-695523-010 | 马达保护开关 PKZMC-10 1Q5 (仅 220/200V 机型) | Motor protector PKZMC-10 1Q5 (only for 220/200V) |
| 10 | 02-785429-001 | 适配器 B3.0/2-PKZ0 | Adapter B3.0/2-PKZ0 |
| 11 | 02-301777-002 | 断路器 PL9-D6/2 1Q1 | Breaker PL9-D6/2 1Q1 |
| 12 | WAGO249 | 挡块 | Block |
| 13 | 02-695524-001 | 辅助模块 NHI-E-11-PKZ0 | Auxiliary Contact NHI-E-11-PKZ0 |
| 14 | 02-695521-004 | 接触器 DILM07 01C 1K10 | Contacteur DILM07 01C 1K10 |
| 15 | 743402-3 | 接触器 DILM07 10C 1K4 | Contacteur DILM07 10C 1K4 |
| 16 | 743402-3 | 接触器 DILM07 10C 1K8 | Contacteur DILM07 10C 1K8 |
| 17 | 02-695521-001 | 接触器 DILM09 10C 1K3 | Contacteur DILM09 10C 1K3 |
| | 02-695521-005 | 接触器 DILM12 10C 1K3 (仅 220/200V 机型) | Contacteur DILM12 10C 1K3 (only for 220/200V) |
| 18 | 743402-3 | 接触器 DILM07 10C 1K4 | Contacteur DILM07 10C 1K4 |
| 19 | 02-695521-004 | 接触器 DILM07 01C 1K6 | Contacteur DILM07 01C 1K6 |
| 20 | 02-695524-001 | 辅助模块 NHI-E-11-PKZ0 (仅带烘干机型) | Auxiliary Contact NHI-E-11-PKZ0 (only with dryer) |

Switch Box(Smartronic)

电器箱装配 (Smartronic)



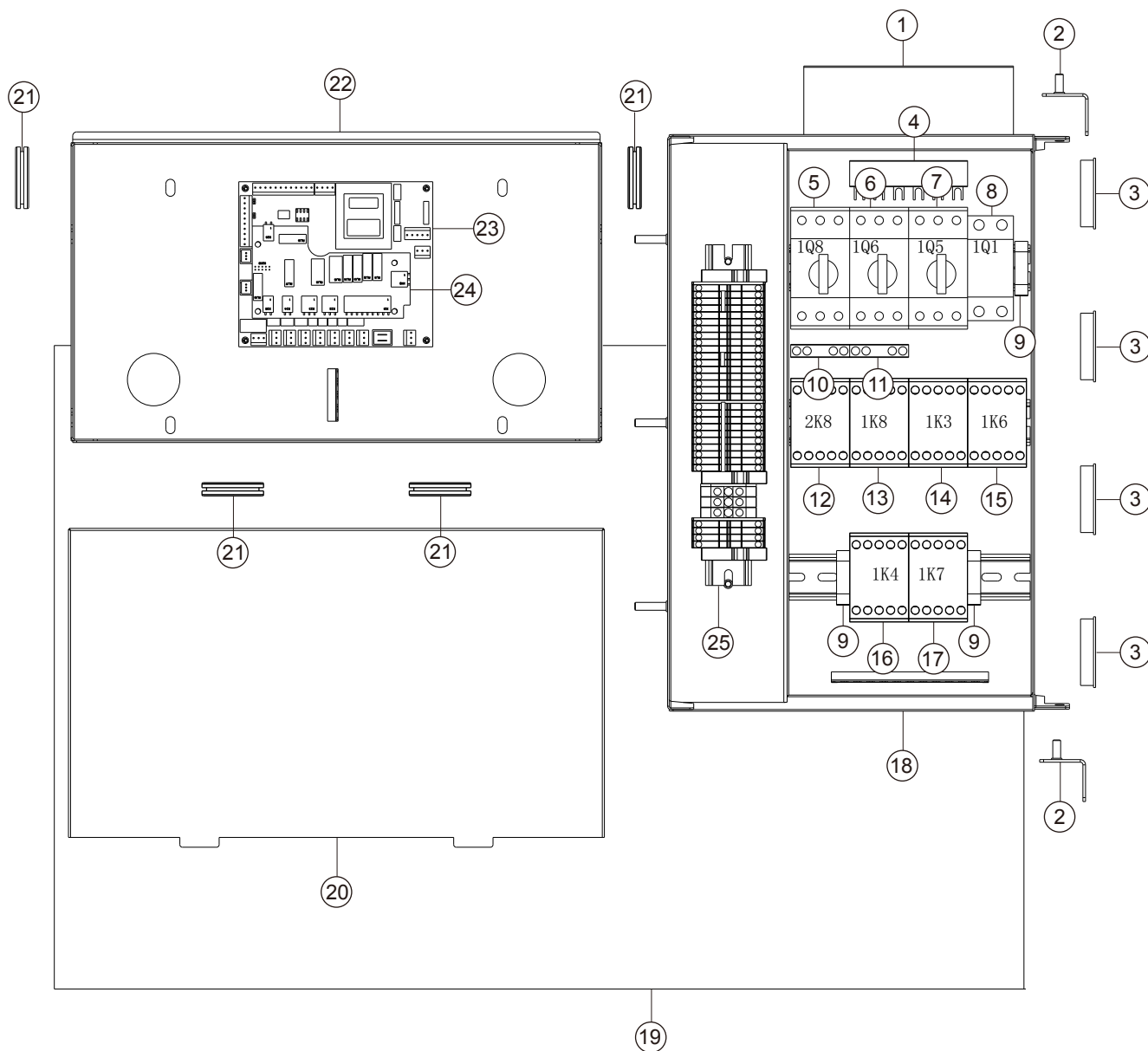
Switch Box(Smartronic)

电器箱装配 (Smartronic)

| Illus. | Parts No. | Description | |
|--------|---------------|----------------------|-------------------------|
| 序号 | 零件号 | 名称 | |
| 1 | 02-296926-001 | 接触器 DILM25 10C 1K2 | Contactor |
| 2 | 02-695523-006 | 电机保护开关 PKZMC-1.6 1Q6 | Motor Protection Switch |
| 3 | 02-785429-001 | 三相适配器 B3.0/2-PKZ0 | Three Phase Adaptor |
| 4 | 02-695523-009 | 电机保护开关 PKZMC-6.3 1Q5 | Motor Protection Switch |
| 5 | 02-301777-002 | 两相断路器 PL9-D6/2 1Q1 | Circuit Breaker |
| 6 | WAGO249 | 挡块 | Block |
| 7 | 01-245228-002 | 支架焊件 | Braket |
| 8 | 00-886756-001 | 过线胶圈 | Cable Bushing |
| 9 | 02-695524-001 | 辅助模块 NHI-E-11-PKZ0 | Auxiliary Contact |
| 10 | 02-695521-004 | 接触器 DILM07 01C 2K8 | Contactor |
| 11 | 02-695521-004 | 接触器 DILM07 01C 1K8 | Contactor |
| 12 | 02-695521-001 | 接触器 DILM09 10C 1K3 | Contactor |
| 13 | 743402-3 | 接触器 DILM07 10C 1K6 | Contactor |
| 14 | 00-374384-000 | 图纸袋 | Diagram Bag |
| 15 | 743402-3 | 接触器 DILM07 10C 2K2 | Contactor |
| 16 | 743402-3 | 接触器 DILM07 10C 1K7 | Contactor |
| 17 | 743402-3 | 接触器 DILM07 10C 2K1 | Contactor |
| | 02-296926-001 | 接触器 DILM25 10C 2K1 | Contactor |
| 18 | 02-296926-001 | 接触器 DILM25 10C 1K1 | Contactor |
| 19 | 02-785509-003 | 接线排 | Terminals |
| 20 | 7159115-5 | 电器箱焊件 L-R | Control Box L-R |
| | 7159115-6 | 电器箱焊件 R-L | Control Box R-L |
| 21 | 7159125-22 | 挡水帘 | Waterscreen |
| 22 | 02-895732-001 | 盖板 | Cover |
| 23 | 00-785565-005 | 过线胶圈 | Cable Bushing |
| 24 | 00-897545-004 | 控制板 | Control Board |
| 25 | 7159101-3 | 小电器箱 | Control Box |
| 26 | 00-897546-002 | 扩展板 | Control Board |

Switch Box(Smartronic-Steam heating)

电器箱装配 (Smartronic- 蒸汽加热)



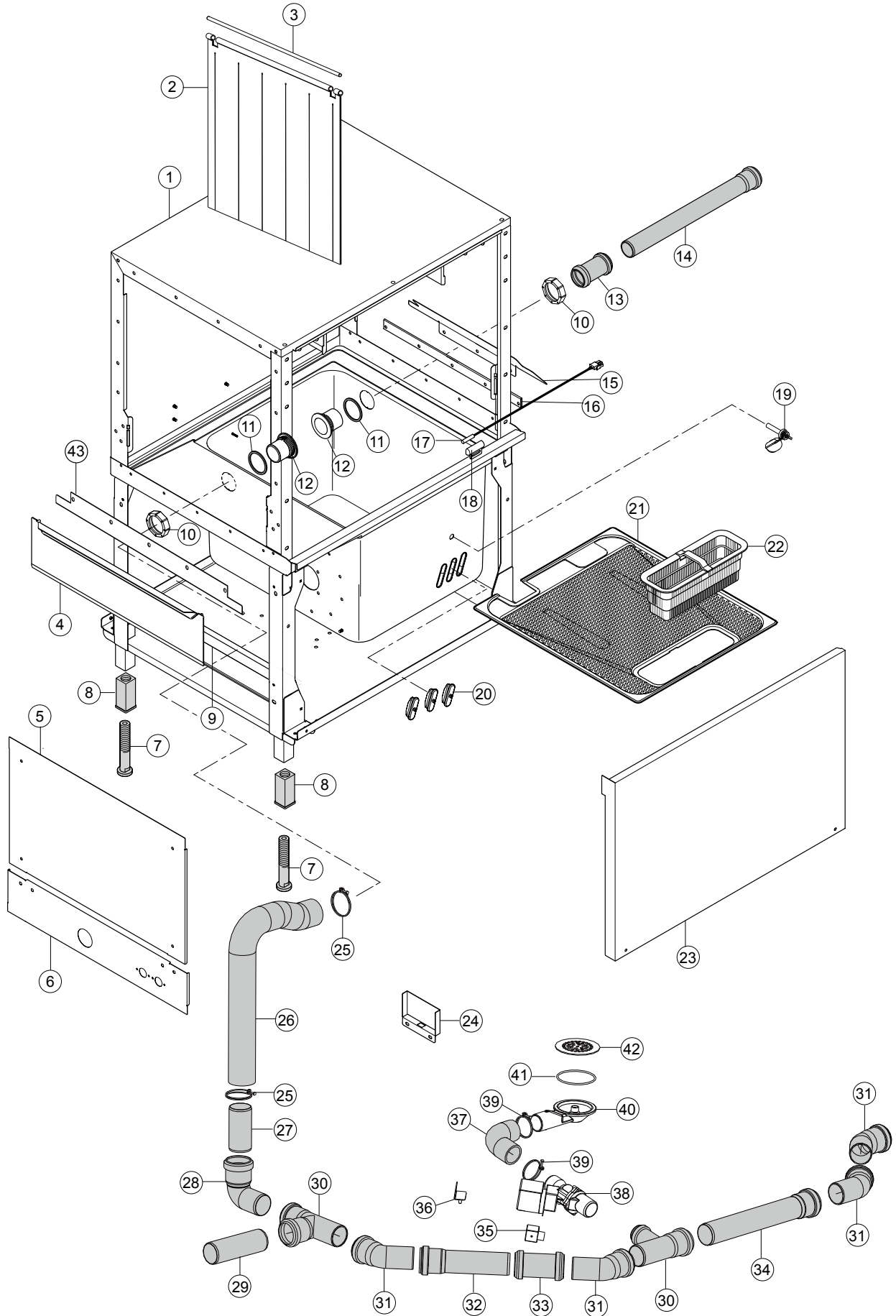
Switch Box(Smartronic-Steam heating)

电器箱装配 (Smartronic- 蒸汽加热)

| Illus. | Parts No. | Description | |
|--------|---------------|---|--|
| 序号 | 零件号 | 名称 | |
| 1 | 02-374384-001 | 图纸袋 | Diagram bag |
| 2 | 01-245228-002 | 支架焊件 | Bracket |
| 3 | 00-886756-001 | 过线胶圈 | Cable bushing |
| 4 | 02-785429-001 | 适配器 B3.0/2-PKZ0 | Adapter B3.0/2-PKZ0 |
| 5 | 02-695523-006 | 马达保护开关 PKZMC-1.6 1Q8 | Motor protector PKZMC-1.6 1Q8 |
| | 02-695523-007 | 马达保护开关 PKZMC-2.5 1Q8 (仅 220/200V 机型) | Motor protector PKZMC-2.5 1Q8 (for 220/200V) |
| 6 | 02-695523-006 | 马达保护开关 PKZMC-1.6 1Q6 | Motor protector PKZMC-1.6 1Q6 |
| | 02-695523-008 | 马达保护开关 PKZMC-4 1Q6 (仅 220/200V 机型) | Motor protector PKZMC-4 1Q6 (only 220/200V) |
| 7 | 02-695523-009 | 马达保护开关 PKZMC-6.3 1Q5 | Motor protector PKZMC-6.3 1Q5 |
| | 02-695523-010 | 马达保护开关 PKZMC-10 1Q5 (仅 220/200V 机型) | Motor protector PKZMC-10 1Q5 (only for 220/200V) |
| 8 | 02-301777-002 | 断路器 PL9-D6/2 1Q1 | Breaker PL9-D6/2 1Q1 |
| 9 | WAGO249 | 挡块 | Block |
| 10 | 02-695524-001 | 辅助模块 NHI-E-11-PKZ0 (仅带烘干机型) | Auxiliary Contact NHI-E-11-PKZ0 (only with dryer) |
| 11 | 02-695524-001 | 辅助模块 NHI-E-11-PKZ0 | Auxiliary Contact NHI-E-11-PKZ0 |
| 12 | 02-695521-004 | 接触器 DILM07 01C 2K8 | Contactor DILM07 01C 2K8 |
| 13 | 02-695521-004 | 接触器 DILM07 01C 1K8 | Contactor DILM07 01C 1K8 |
| 14 | 02-695521-001 | 接触器 DILM09 10C 1K3 | Contactor DILM09 10C 1K3 |
| | 02-695521-005 | 接触器 DILM12 10C 1K3 (仅 220/200V 机型) | Contactor DILM12 10C 1K3 (only for 220/200V) |
| 15 | 743402-3 | 接触器 DILM07 10C 1K6 | Contactor DILM07 10C 1K6 |
| 16 | 743402-3 | 接触器 DILM07 10C 1K4 | Contactor DILM07 10C 1K4 |
| 17 | 743402-3 | 接触器 DILM07 10C 1K7 | Contactor DILM07 10C 1K7 |
| 18 | 7159115-5 | 电气盒 L-R | Control box L-R |
| | 7159115-6 | 电气盒 R-L | Control box R-L |
| 19 | 7159125-22 | 挡水帘 | Waterscreen |
| 20 | 02-895732-001 | 盖板 | Cover |
| 21 | 00-785565-005 | 过线胶圈 | Cable bushing |
| 22 | 7159101-3 | 小电器盒 | Control box |
| 23 | 00-897545-004 | 主控板 | Control board |
| 24 | 00-897546-002 | 扩展板 | Control board |
| 25 | 02-785509-003 | 端子排 | Terminal |

Prewash Module

预洗模块



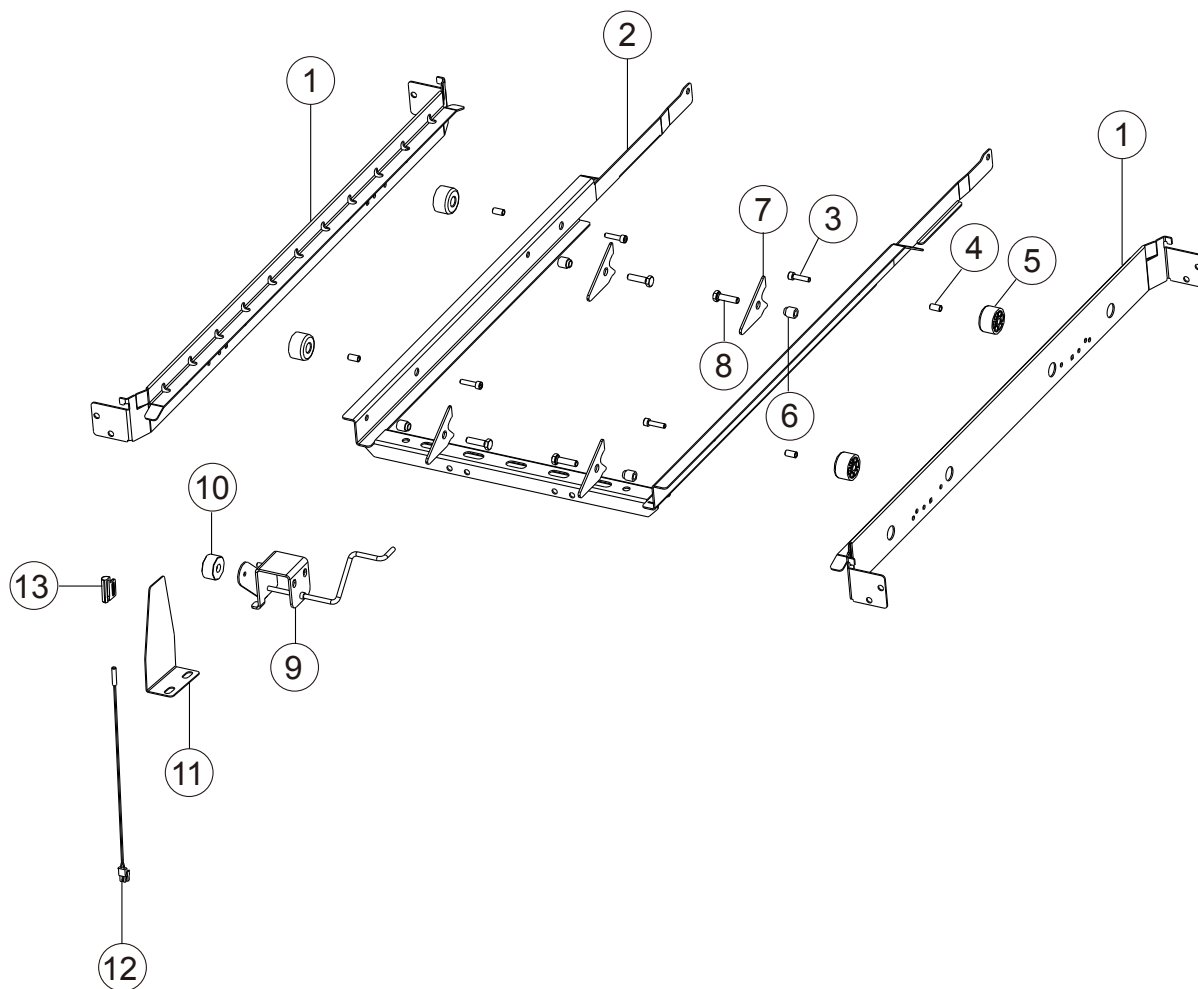
Prewash Module

预洗模块

| Illus. | Parts No. | Description | |
|--------|---------------|--------------|------------------------------|
| 序号 | 零件号 | 名称 | |
| 1 | 01-291706-001 | 预洗模块框架合件 L-R | S-Wash Module L-R |
| | 01-291706-002 | 预洗模块框架合件 R-L | S-Wash Module R-L |
| 2 | 01-291315-003 | 短门帘 | Curtain |
| 3 | 01-245396-006 | 门帘棍 | Curtain Rod |
| 4 | 01-291429-001 | 水箱端板焊件 | Table Plate Assy |
| 5 | 01-291409-001 | 入口护板 | Entry Cover |
| 6 | 01-291408-001 | 入口下护板 L-R | Entry Cover L-R |
| | 01-291408-002 | 入口下护板 R-L | Entry Cover R-L |
| 7 | 00-325007-001 | 地脚 | Foot Screw-in Part |
| 8 | 00-325008-001 | 地脚座 | Kit Adjustable Foot Fin |
| 9 | 01-291432-001 | 联结板焊件 L-R | Cross Brace L-R |
| | 01-291432-002 | 联结板焊件 | Cross Brace R-L |
| 10 | 01-245165-001 | 溢流管锁母 | Nut Overflow |
| 11 | 01-245460-001 | 密封垫 | Seal Overflow |
| 12 | 01-245112-001 | 溢流管 | Overflow Pipe |
| 13 | 00-229680-001 | 短管 | Tube |
| 14 | 00-229679-006 | 直管 | Tube |
| 15 | 00-896430-003 | 挡水板 | Splash Sheet |
| 16 | 00-325155-003 | U形板 | U Plate |
| 17 | 01-240288-001 | 磁开关总成 | Magnetic Switch |
| 18 | 00-883838-001 | 磁开关压板 | Switch Holder |
| 19 | 01-245621-002 | 浮子开关 | Mit Temperature Hler NTC |
| 20 | 02-774808-001 | 堵头 | Blind Plug |
| 21 | 01-245047-006 | 过滤筛网 L-R | Tank Cover Filter L-R |
| | 01-245047-005 | 过滤筛网 R-L | Tank Cover Filter R-L |
| 22 | 01-245170-010 | 过滤篮 | Screen Baskte Compl. 2-Parts |
| 23 | 01-291407-004 | 前护板 L-R | Front Panel L-R |
| | 01-291407-005 | 前护板 R-L | Front Panel R-L |
| 24 | 01-291982-001 | 溢流盒 | Over Flow Housing |
| 25 | 00-323945-064 | 喉箍 64 | Hose Clamp 64 |
| 26 | 01-291519-001 | 排水胶管 | Hose |
| 27 | 00-325737-007 | 短接管 | Connector |
| 28 | 00-230080-001 | 弯头 | Elbow |
| 29 | 00-325737-004 | 直管 | Tube |
| 30 | 00-230079-001 | 三通 | Tee |
| 31 | 00-377340-001 | 45°弯头 | 45° Elbow |
| 32 | 00-229679-011 | 直管 | Tube |
| 33 | 00-229680-001 | 短管 | Tube |
| 34 | 00-229679-040 | 直管 | Tube |
| 35 | 02-228905-001 | 接头 | Connect Jack |
| 36 | 01-291684-002 | 排水阀支架焊件 | Valve Holder Assy |
| 37 | 01-291527-002 | 排水胶管 | Hose |
| 38 | 00-774683-001 | 排水电磁阀 | Drain Valve |
| 39 | 00-323945-053 | 喉箍 53 | Clamp 53 |
| 40 | 01-245109-001 | 排水阀座组件 | Drain Piece |
| 41 | 02-245340-004 | O形圈 80x3.55 | O-Ring |
| 42 | 01-245107-001 | 过滤网 | Coarse Screen Wash Tank |
| 43 | 00-896394-001 | 加强板 | Reinforce Panel |

Transport System(Prewash)

传动系统(预洗)



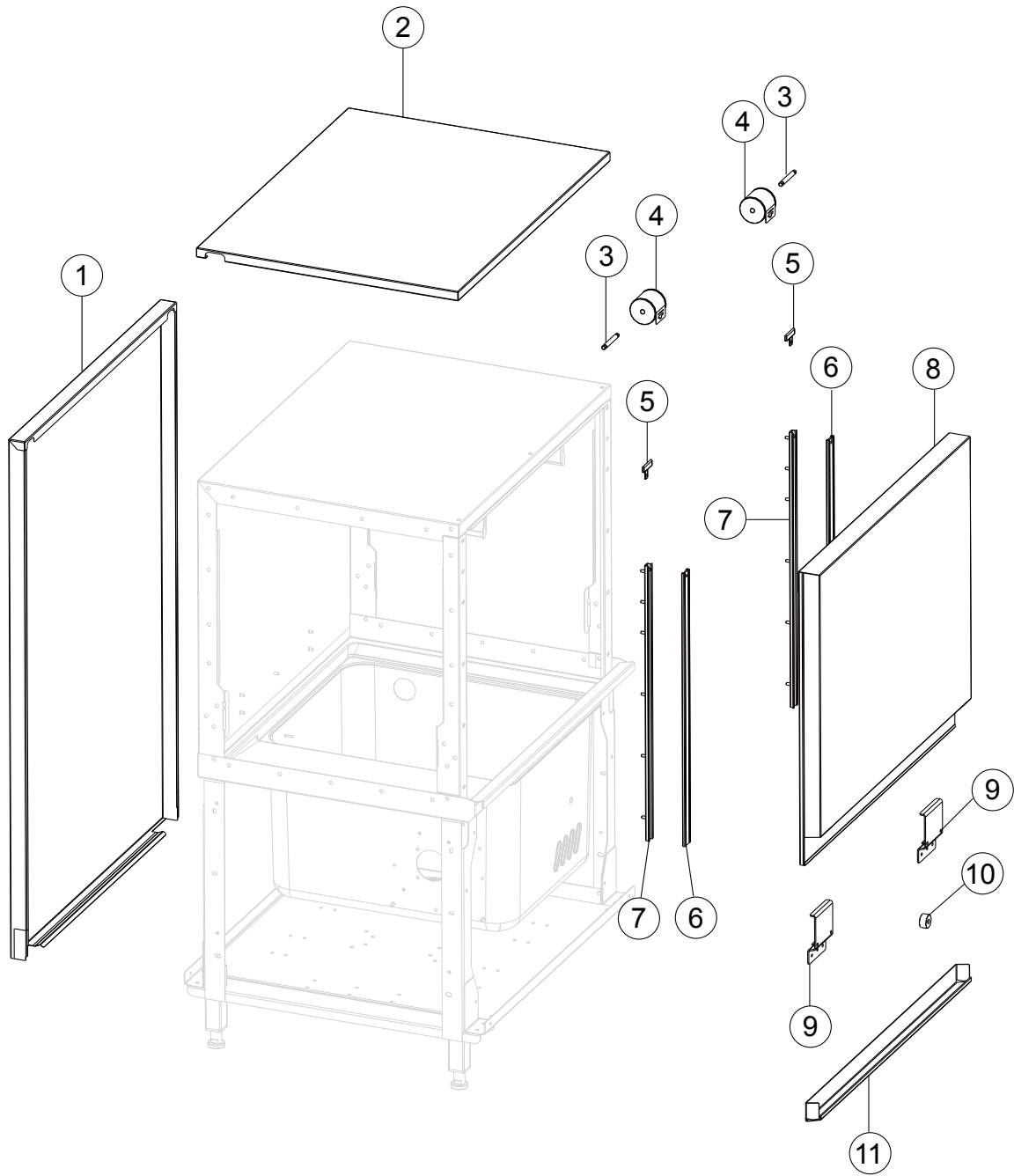
Transport System(Prewash)

传动系统(预洗)

| Illus. | Parts No. | Description | |
|--------|---------------|-------------|---------------------------|
| 序号 | 零件号 | 名称 | |
| 1 | 01-291368-002 | 导轨 | Tray Guide |
| 2 | 01-291375-002 | 碗架焊件 | Transport Frame Assy |
| 3 | 00-603026-000 | 内六角螺栓 M6X25 | Inner Hexagon Screw M6X25 |
| 4 | 01-291535-001 | 滚轮轴套 | Distance Piece |
| 5 | 01-291534-001 | 碗架滚轮 | Sliding Roll |
| 6 | 01-243284-001 | 套管 | Sleeve Roller |
| 7 | 01-291371-001 | 拨爪 | Dog |
| 8 | 00-602579-000 | 六角螺栓 M8X30 | Hexagon Screw M8X30 |
| 9 | 01-242189-001 | 磁铁架组件 L-R | Magnet Braket Assy L-R |
| | 01-242189-002 | 磁铁架组件 R-L | Magnet Braket Assy R-L |
| 10 | 00-774714-001 | 门磁铁 | Magnet |
| 11 | 01-291513-001 | 磁开关支架 | Braket |
| 12 | 01-240288-001 | 磁开关总成 | Magnet Switch |
| 13 | 00-883838-001 | 磁开关压板 | Switch Holder |

Door and Insulation(Prewash)

隔热板组件（预洗）



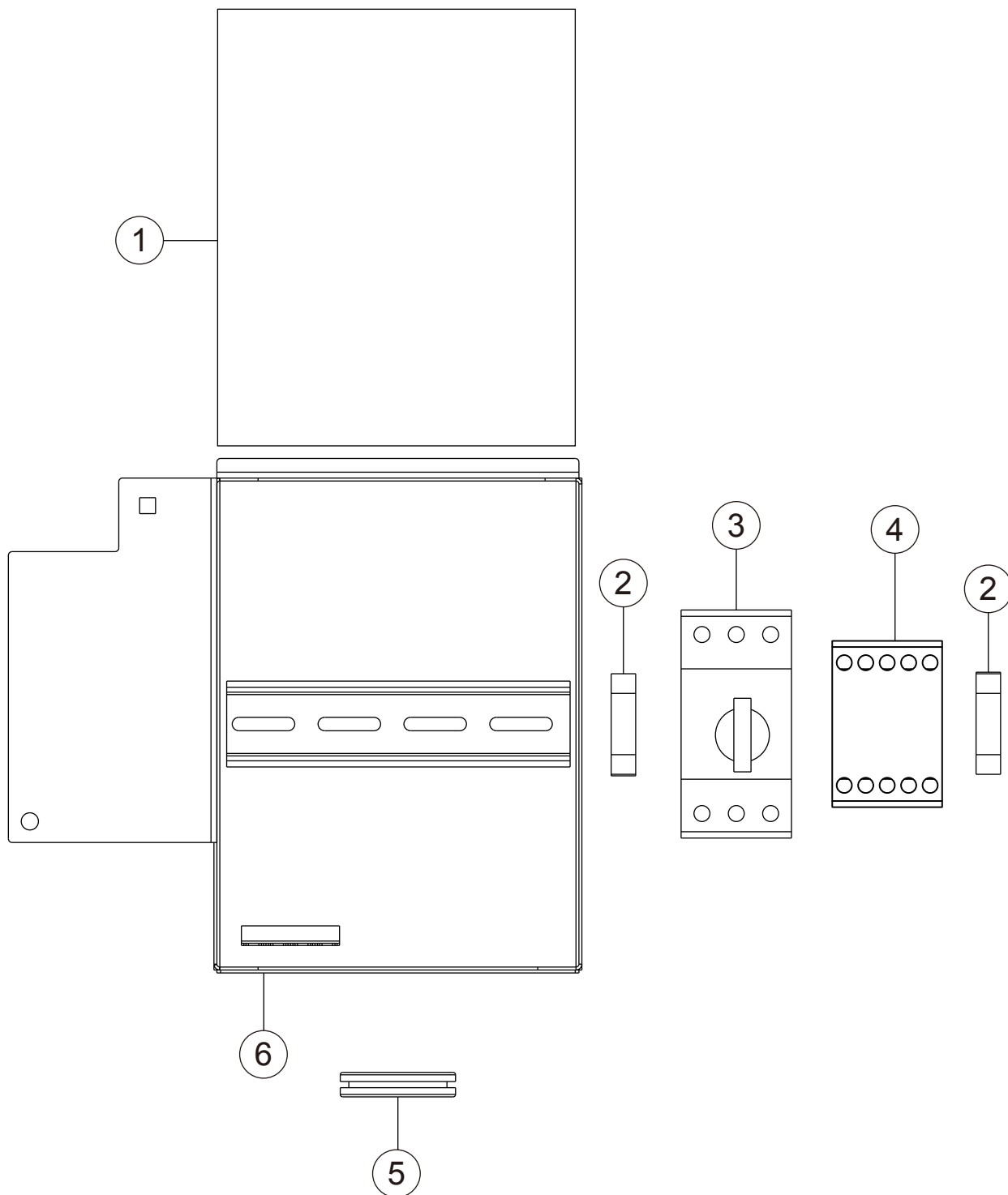
Door and Insulation(Prewash)

隔热板组件（预洗）

| Illus. | Parts No. | Description | |
|---------------|------------------|--------------------|--------------------|
| 序号 | 零件号 | 名称 | |
| 1 | 01-291317-002 | 后护板 | Back Panel |
| 2 | 01-291397-002 | 隔热顶板焊件 | Ceiling Insulation |
| 3 | 01-245281-001 | 卷簧轴 | Axle |
| 4 | 01-245278-004 | 卷簧组件 | Door Spring |
| 5 | 01-291426-001 | 挡汽块 | Steam Baffle Door |
| 6 | 00-325064-008 | 门滑块 | Slide |
| 7 | 01-245126-003 | 门导轨焊件 | Profile |
| 8 | 01-291321-002 | 门板焊件 | Insulate Door |
| 9 | 01-245127-001 | 磁铁架 | Door stopper |
| 10 | 00-774714-001 | 门磁铁 | Magnet |
| 11 | 01-245129-002 | 门把手焊件 | Door Handle |

Control box(Prewash)

控制盒（预洗）



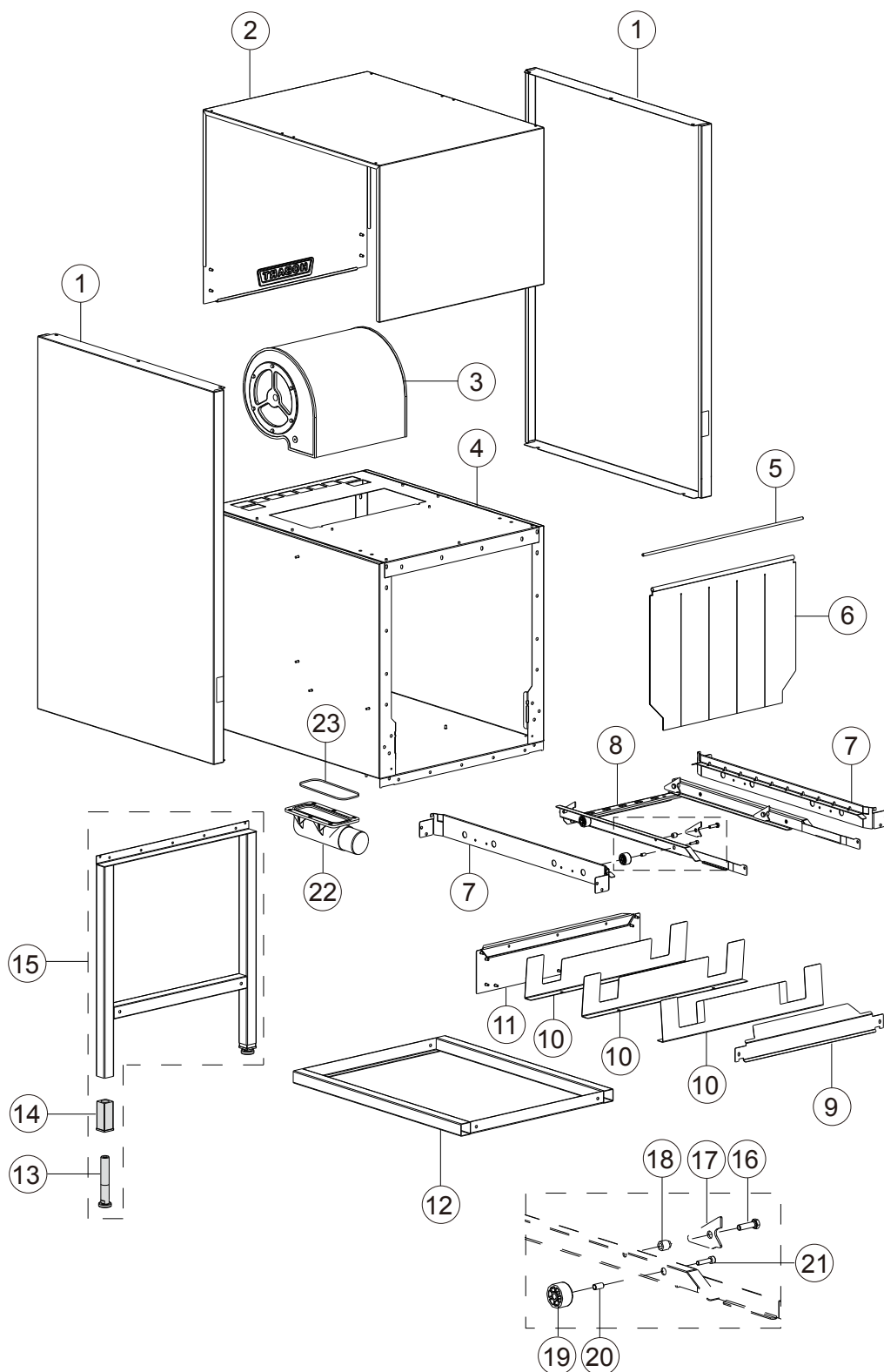
Control box(Prewash)

控制盒（预洗）

| Illus. | Parts No. | Description | |
|---------------|------------------|---|--|
| 序号 | 零件号 | 名称 | |
| 1 | 7159125-24 | 挡水帘 | Waterscreen |
| 2 | WAGO249 | 挡块 | Block |
| 3 | 02-695523-009 | 电机保护开关 PKZMC-6.3 2Q5 | Motor protection switch PKZMC-6.3 2Q5 |
| | 02-695523-010 | 电机保护开关 PKZMC-10 2Q5 (仅 220V/200V 机型) | Motor protection switch PKZMC-10 2Q5 (only for 220V/200V) |
| 4 | 02-695521-001 | 接触器 DILM09 10C 2K3 | Contactor DILM09 10C 2K3 |
| | 02-695521-005 | 接触器 DILM12 10C 2K3 (仅 220V/200V 机型) | Contactor DILM12 10C 2K3 (only for 220V/200V) |
| 5 | 00-785565-005 | 过线胶圈 | Cable bushing |
| 6 | 7159160-5 | 控制盒焊件 L-R | Control box L-R |
| | 7159160-6 | 控制盒焊件 R-L | Control box R-L |

Dryer Module

烘干模块



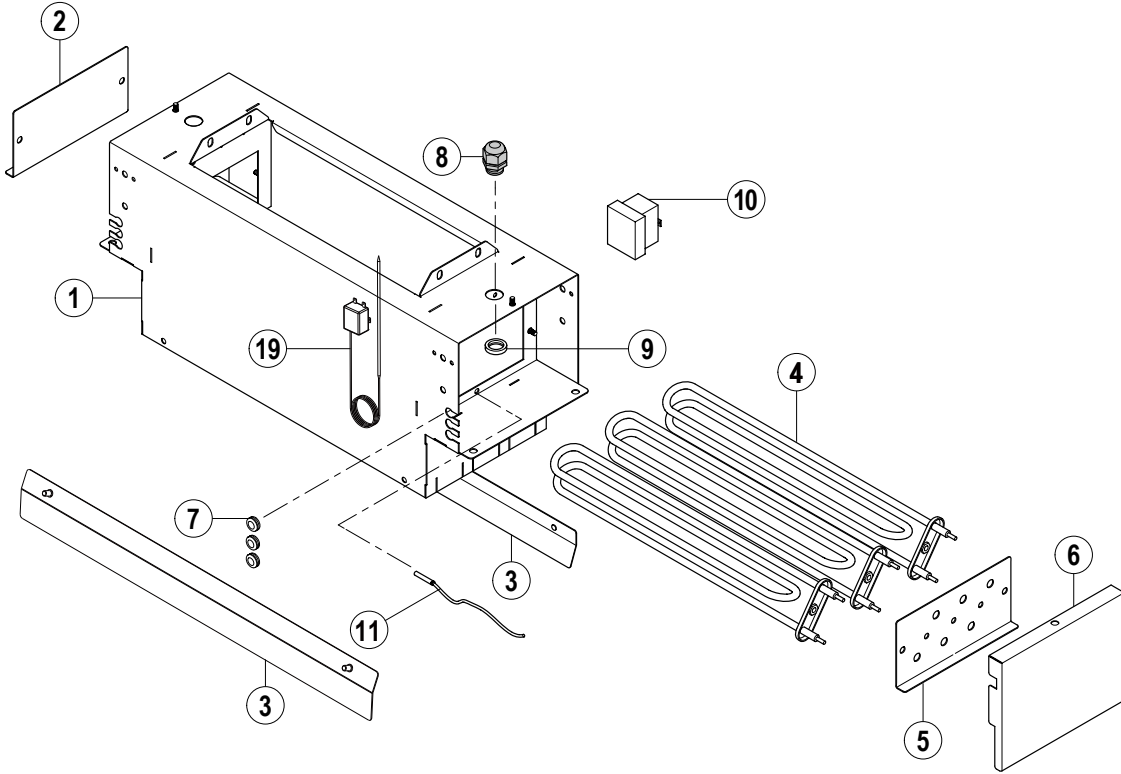
Dryer Module

烘干模块

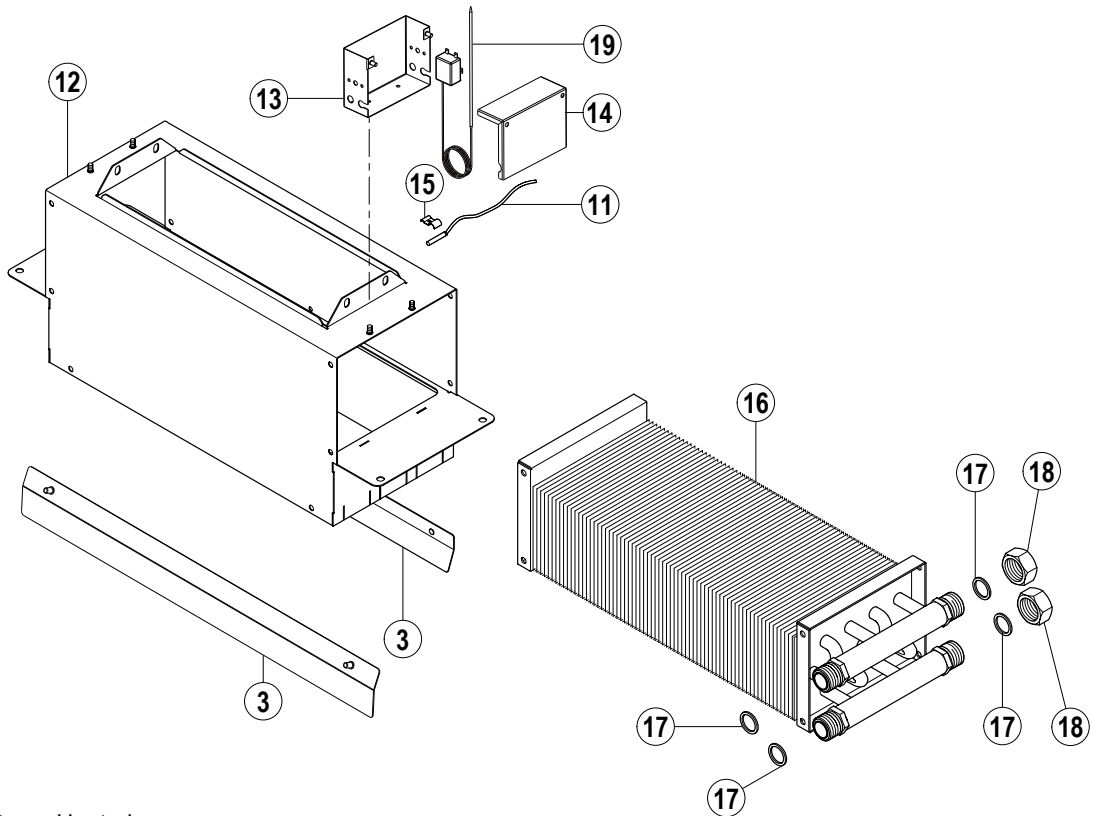
| Illus. 序号 | Parts No. 零件号 | Description 名称 | |
|--------------|------------------|-------------------|---------------------|
| 1 | 01-291462-001 | 隔热板 | Side Panel CDS |
| 2 | 01-291453-001 | 风机外罩焊件 | Hood Assy |
| 3 | 00-897700-002 | 风机 | Blower |
| 4 | 01-291451-001 | 烘干洗室焊件 | CDS Body |
| 5 | 01-245396-007 | 门帘棍 | Curtain Rod |
| 6 | 01-291315-001 | 长门帘 | Curtain |
| 7 | 01-291368-005 | 导轨 | Tray Guide |
| 8 | 01-291375-005 | 碗架焊件 | Transport Assy |
| 9 | 01-291461-001 | 回水板 | Water Deflector |
| 10 | 01-291713-001 | 气流反射板 | Air Deflector |
| 11 | 01-291429-002 | 水箱端板焊件 | Table Plate Assy |
| 12 | 00-378747-186 | 支腿联接架焊件 | Root Folder |
| 13 | 00-325007-001 | 地脚 | Foot Screw-in Part |
| 14 | 00-325008-001 | 地脚座 | Kit Adjustable Fin |
| 15 | 00-734997-001 | 烘干水箱支腿焊件 | Root Folder |
| 16 | 00-602579-000 | 六角螺栓 M8X30 | Hexagon Screw M8X30 |
| 17 | 01-291371-001 | 拨爪 | Dog |
| 18 | 01-243284-001 | 套管 | Sleeve Roller |
| 19 | 01-291534-001 | 碗架滚轮 | Sliding Roll |
| 20 | 01-291535-001 | 滚轮轴套 | Sleeve Crank |
| 21 | 00-603026-000 | 内六角螺栓 M6X25 | Inner Hexagon Screw |
| 22 | 00-325529-1 | 排水盒 | Drainage |
| 23 | 276903-35 | 排水盒胶圈 | O ring 106X3 |

Dryer Heating

烘干加热



Electrically Heated



Steam Heated

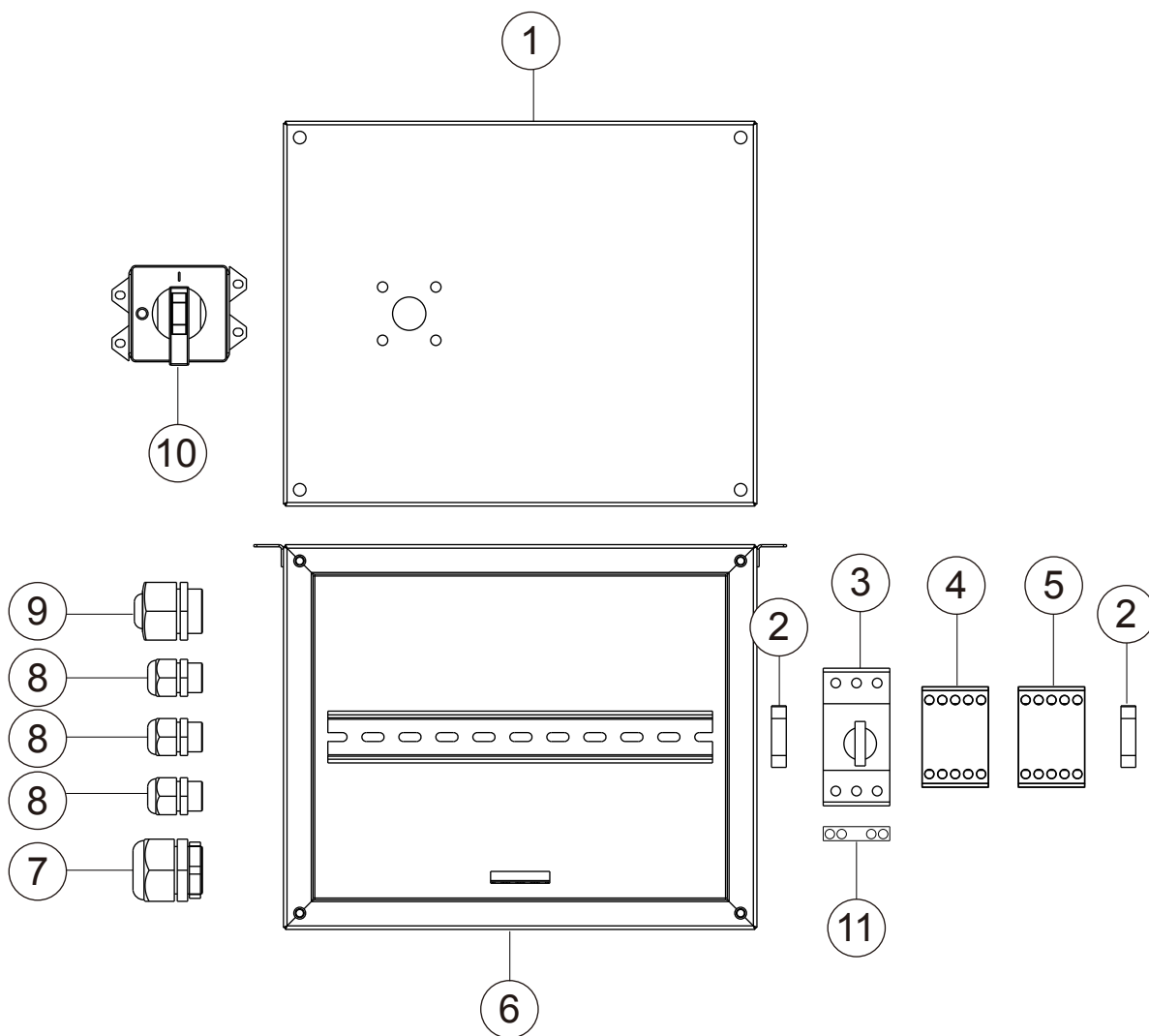
Dryer Heating

烘干加热

| Illus. | Parts No. | Description | |
|--------|---------------|----------------------|-----------------------------------|
| 序号 | 零件号 | 名称 | |
| 1 | 01-291465-001 | 风口焊件 | Blower Holder Assy |
| 2 | 01-245214-004 | 电热管安装板 | Holder Heating Elements |
| 3 | 01-245557-005 | 吹风口挡流板焊件 | Air Blade |
| 4 | 02-229189-001 | 电热管 220V 1.5kW | Heating Element 220V 1.5kW |
| | 02-229189-004 | 电热管 200V 1.5kW | Heating Element 200V 1.5kW |
| 5 | 01-245554-002 | 电热管安装板焊件 | Holder Heating Element |
| 6 | 01-291463-001 | 盖板 | Cover |
| 7 | 00-227748-001 | 过线胶圈 | Gland Cable |
| 8 | 00-695661-003 | 线管接头 | Gland Cable |
| 9 | 00-695664-003 | 接头锁母 | Screw Nut |
| 10 | 00-378791-000 | 极限温控器 | Safety Temp.-Limiter |
| 11 | 00-775612-001 | 温控探头 (CCA-Smart) | Temperature Probe (for CCA-Smart) |
| 12 | 01-291894-001 | 风口焊件 | Blower Holder Assy |
| 13 | 7159159-5 | 烘干电气盒焊件 | Dryer Control Box Assy |
| 14 | 7159159-2 | 盒盖 | Cover |
| 15 | 00-324157-000 | 压片 | Plate |
| 16 | 01-291895-001 | 蒸汽加热器 | Steam Heat Exchanger |
| 17 | 00-302574-014 | 密封垫圈 | Seal |
| 18 | 01-245605-001 | 盖母 | Cover |
| 19 | 743310 | 机械温控器 (仅用于 CCA-Easy) | Mechanical Thermostat (CCA-Easy) |

Control box(dryer)

控制盒（烘干）



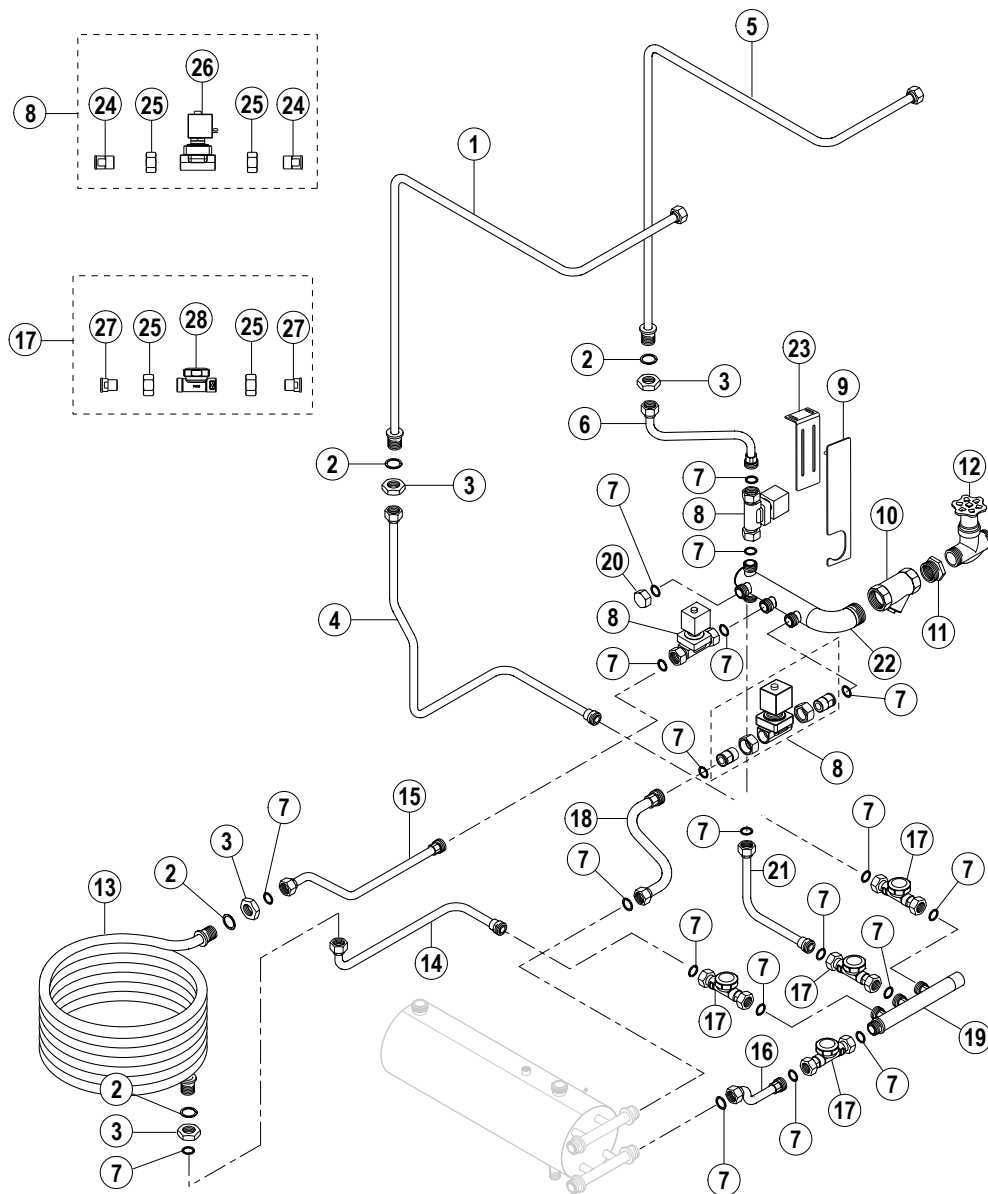
Control box(dryer)

控制盒（烘干）

| Illus. | Parts No. | Description | |
|--------|---------------|---|--|
| 序号 | 零件号 | 名称 | |
| 1 | 7159158-2 | 烘干电气盒盖 | Cover |
| 2 | WAGO249 | 挡块 | Block |
| 3 | 02-695523-006 | 马达保护开关 PKZMC-1.6 1Q8 | Motor protect switch PKZMC-1.6 1Q8 |
| | 02-695523-007 | 马达保护开关 PKZMC-2.5 1Q8 (仅 220/200V 机型) | Motor protect switch PKZMC-2.5 1Q8 (only for 220V/200V) |
| 4 | 743402-3 | 接触器 DILM07 10C 1K4 | Contactora DILM07 10C 1K4 |
| 5 | 743402-3 | 接触器 DILM07 10C 1K5 | Contactora DILM07 10C 1K5 |
| 6 | 7159158-5 | 烘干电气盒焊件 L-R | Control box, cpl. L-R |
| | 7159158-6 | 烘干电气盒焊件 R-L | Control box, cpl. R-L |
| 7 | 00-695661-005 | 锁紧护套 M32 | Gland cable M32 |
| 8 | 00-695661-003 | 锁紧护套 M20 | Gland cable M20 |
| 9 | FE-024-58 | 锁紧护套 | Gland cable |
| 10 | 7159164-1 | 主开关 P1-25/V/SVB/N 2Q0 | Main switch P1-25/V/SVB/N 2Q0 |
| 11 | 02-695524-001 | 辅助模块 NHI-E-11-PKZ0 | Auxiliary contact NHI-E-11-PKZ0 |

Steam Piping

蒸汽管路



Steam Piping

蒸汽管路

| Illus. | Parts No. | Description | |
|--------|---------------|---------------------|-------------------------------------|
| 序号 | 零件号 | 名称 | |
| 1 | 01-291891-001 | 蒸汽出气管 (烘干) L-R | Steam Outlet Pipe L-R |
| | 01-291891-003 | 蒸汽出气管 (烘干) R-L | Steam Outlet Pipe R-L |
| 2 | 00-300084-010 | 密封垫圈 | Seal |
| 3 | 00-609698-000 | 锁母 | Nut |
| 4 | 01-291919-001 | 冷凝管焊件 (烘干) L-R | Condenser Pipe Assy L-R |
| | 01-291932-001 | 冷凝管焊件 (烘干) R-L | Condenser Pipe Assy R-L |
| 5 | 01-291891-002 | 蒸汽进气管 (烘干) L-R | Steam Inlet Pipe L-R |
| | 01-291891-004 | 蒸汽进气管 (烘干) R-L | Steam Inlet Pipe R-L |
| 6 | 01-291907-001 | 蒸汽进气管 | Steam Inlet Pipe |
| 7 | 00-302574-014 | 密封垫圈 | Seal |
| 8 | 01-245593-001 | 蒸汽电磁阀组件 1 - 3,5 bar | Solenoid Assy 1 - 3,5 bar |
| 9 | 7159161-3 | 进气管组件支架焊件 | Pipe Assy Braket |
| 10 | 00-774429-001 | 过滤器 | Strainer |
| 11 | 00-609276-000 | 补芯 | Bushing |
| 12 | 00-165829-102 | 截门 | Shut off Valve |
| 13 | 7159149-2 | 蒸汽水箱盘管焊件 CCA | Steam Coil Assy CCA |
| 14 | 7159150-2 | CCA 冷凝管焊件 (水箱) R-L | Condenser Pipe Assy R-L(Water Tank) |
| | 7159150-4 | CCA 冷凝管焊件 (水箱) L-R | Condenser Pipe Assy L-R(Water Tank) |
| 15 | 7159148-2 | 进气管焊件 (水箱) | Inlet Pipe Assy (Water Tank) |
| 16 | 01-291915-001 | 冷凝管焊件 (升温箱) | Condenser Pipe Assy (Booster) |
| 17 | 01-245603-002 | 疏水器组件 | Steam Trap Assy |
| 18 | 01-291899-001 | 进气管焊件 (升温箱) | Inlet Pipe (Booster) |
| 19 | 01-291912-001 | 冷凝水排水焊件 | Outlet Pipe |
| 20 | 01-245605-001 | 盖母 | Cover Nut |
| 21 | 01-291909-001 | 冷凝管焊件 | Condensate Pipe |
| 22 | 01-291902-001 | 进气管焊件 | Steam Inlet Pipe |
| 23 | 7159161-2 | 进气管组件支架 | Pipe Assy Braket |
| 24 | 01-245594-004 | 接头 | Nipple |
| 25 | 01-245567-001 | 锁母 | Nut |
| 26 | 00-869493-001 | 电磁阀 | Magnetic Valve |
| 27 | 01-245596-001 | 接头 | Nipple |
| 28 | 00-774989-001 | 疏水器 | Steam Trap |