



# PARTS MANUAL

## MODEL C44BB SERIES DISHWASERS

*MODE: LEFT TO RIGHT OPERATION*

*RIGHT TO LEFT OPERATION*

**HOBART FOOD EQUIPMENT CO., LTD.**

Version1.1 0905

# CONTENT

<b>NO.</b>	<b>Description</b>	<b>Page</b>
1	TRACK AND CRADLE	3
2	WASH ARMS AND TUBES	5
3	WATER PROTECTION	7
4	INSIDE METALLIC RINSE PIPING	9
5	ACTUATOR MECHANISM AND RINSE DRAIN-OFF PAN	11
6	DRAIN UNIT	13
7	DOOR, CURTAINS, BAFFLES, AND STRAINERS	15
8	MISCELLANEOUS	17
9	ELECTRIC HEAT	19
10	CONVEYOR DRIVE TRAIN	21
11	BOOSTER ASSY	23
12	CONTROL BOX AND BOOSTER COVER	25
13	INLET PIPING	27
14	INLET PIPING (09-05-22)	29
15	OUTLET PIPING I	31
16	OUTLET PIPING I (09-05-22)	33
17	OUTLET PIPING II	35
18	OUTLET PIPING II (09-05-22)	37
19	COMPONENT PANEL(NEW)	39
20	COMPONENT PANEL	41
21	CONVEYOR DRIVE MOTOR	43
22	WASH MOTOR AND PUMP UNIT	45

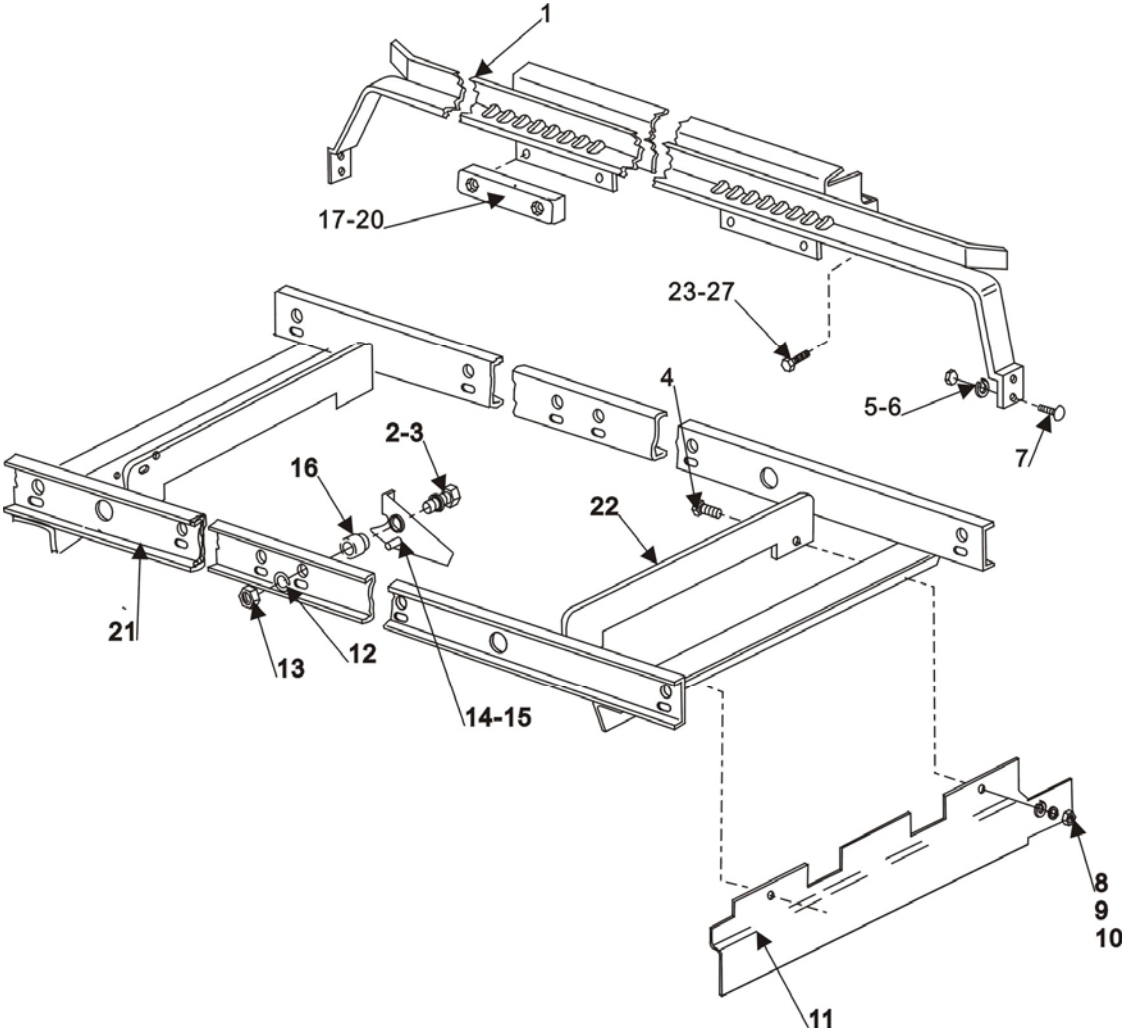


Fig.1 TRACK AND CRADLE

**C44BBSERIES DISHWASHER REPLACEMENT PARTS****TRACK AND CRADLE**

<b>NO.</b>	<b>PART NO.</b>	<b>NAME OF PART</b>	<b>AMT</b>
1	742306	Rack Track	2
2	WS-018-04	Washer	6
3	SC-041-31	Cap Screw 3/8-16 × 1 1/4 Hex Hd	6
4	SC-041-10	Cap Screw 5/16-18 × 5/8 Hex Hd	4
5	NS-015-11	Nut 5/16 – 18 Hex	8
6	WL-006-23	Lockwasher 5/16 Medium (SST)	8
7	SC-041-11	Cap Screw 5/16-18 × 3/4 hex Hd. (SST)	8
8	NS-015-11	Nut 5/16 – 18 Hex	4
9	WS-017-08	Washer	4
10	WL-006-23	Lockwasher 5/16 Medium (SST)	4
11	742214	Baffle – Lower (R – L Only)	1
12	WL-006-28	Lockwasher 3/8 Medium	6
13	NS-015-13	Nut 3/8-16 Hex	6
14	436704-1	Dog (Front, R-L) (Rear, L-R)	3
15	436704-2	Dog – Not Shown (Front, L-R)(Rear, R-L)	3
16	270983	Spacer	6
17	473231	Slider – Large	4
18	SC-041-15	Cap Screw 5/16 – 18 × 1 1/4 Hex Hd	8
19	WL-006-23	Lockwasher 5/16 Medium (SST)	8
20	NS-015-11	Nut 5/16 – 18 Hex	8
21	742329	Cradle	1
22	742130	Baffle – Cradle Upper	2
23	SC-041-31	Cap Screw 3/8-16 × 1 1/4 Hex Hd	2
24	SC-041-11	Cap Screw 5/16-18 ×3/4 Hex Hd. (SST)	10
25	WS-017-01	Washer	20
26	WL-006-23	Lockwasher 5/16 Medium (SST)	14
27	NS-015-11	Nut 5/16 – 18 Hex	14

# C44BBSERIES DISHWASHER REPLACEMENT PARTS

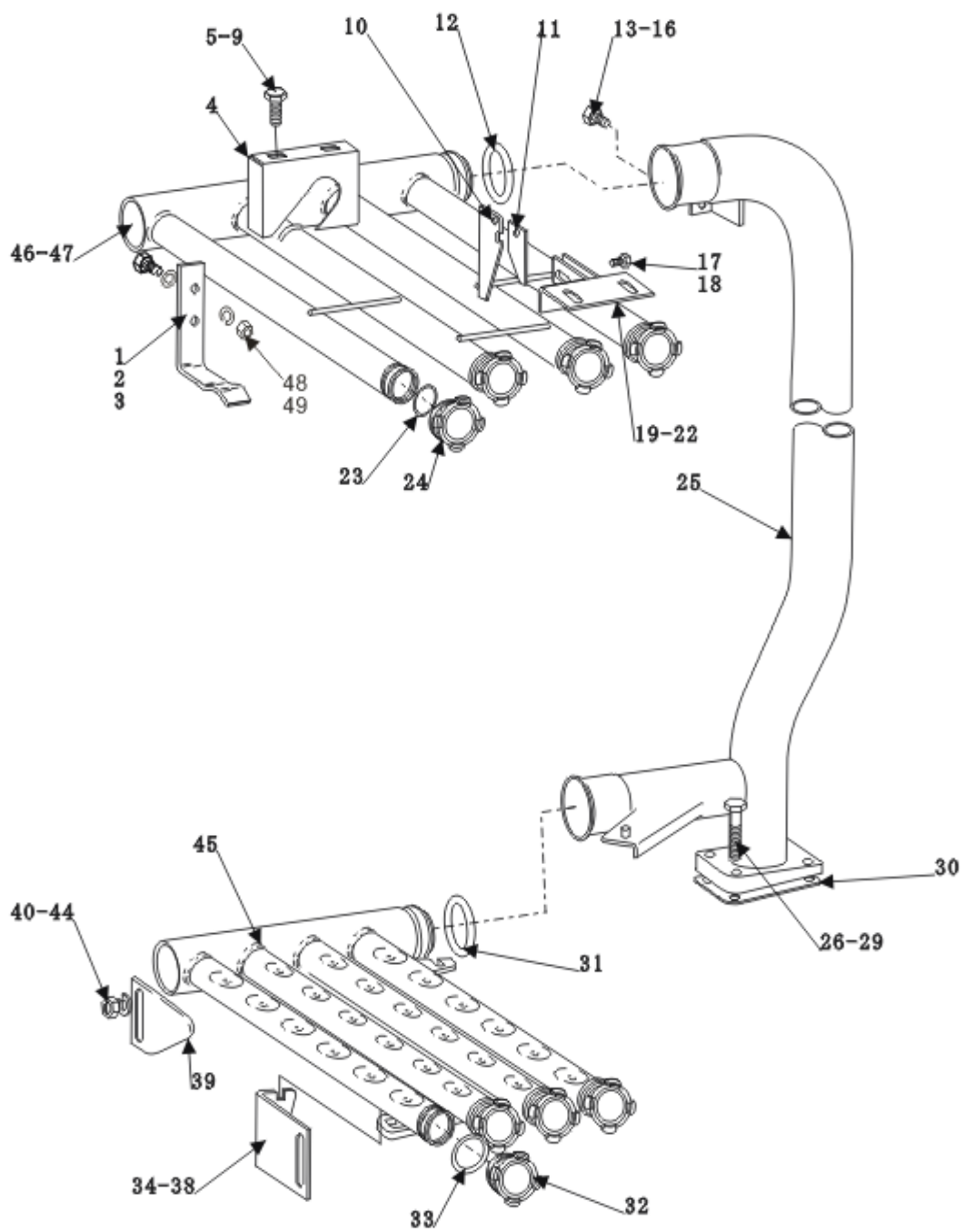


Fig.2 WASH ARMS AND TUBES

**C44BBSERIES DISHWASHER REPLACEMENT PARTS****WASH ARMS AND TUBES**

<b>NO.</b>	<b>PART NO.</b>	<b>NAME OF PART</b>	<b>AMT</b>
1	436947-1	Hanger	2
2	SC-041-05	Cap Screw 1.4-20 × 1/2 Hex Hd	4
3	WL-006-17	Lockwasher1/4	4
4	742187	Guide – Upper Wash Arm	1
5	SC-041-11	Cap Screw 5/16-18 ×3/4 Hex Hd.(SST)	2
6	WS-017-01	Washer.	2
7	WS-017-08	Washer	2
8	WL-006-23	Lockwasher 5/16 Medium (SST)	2
9	NS-015-11	Nut 5/16-18 Hex	2
10	289760	Latch	1
11	289759	Latch	1
12	67500-110	O Ring	1
13	SC-041-01	Cap Screw 1/4 –20 × 3/4 Hex Hd	1
14	WS-022-01	Washer	2
15	WL-006-17	Lockwasher1/4	1
16	NS-015-01	Nut 1/4-20 Hex (SST)	1
17	SC-041-01	Cap Screw 1/4 –20 × 3/4 Hex Hd	2
18	NS-031-19	Stop Nut 1/4-20 Elastic (SST)	2
19	742308	Bracket	1
20	WS-017-08	Washer	2
21	WL-006-23	Lockwasher 5/16 Medium (SST)	2
22	NS-015-11	Nut 5/16-18 Hex	2
23	67500-127	O Ring	4
24	475087	Plug – Wash Arm	4
25	742307	Wash Pipe	1
26	SC-041-18	Cap Screw 5/16 –18 × 1 3/4 Hex Hd (SST)	4
27	WS-017-08	Washer	8
28	WL-006-23	Lockwasher 5/16 Medium (SST)	4
29	NS-015-11	Nut 5/16-18 Hex	4
30	270968	Gasket- Wash Pipe	1
31	67500-110	O Ring	1
32	475087	Plug – Wash Arm	4
33	67500-127	O Ring	4
34	742185	Catch-Adjustable	1
35	NS-015-11	Nut 5/16-18 Hex	2
36	WL-006-23	Lockwasher 5/16 Medium (SST)	2
37	WS-017-08	Washer	2
38	SC-041-11	Cap Screw 5/16-18 ×3/4 Hex Hd. (SST)	2
39	742184	Support – Adjustable	1
40	SC-041-13	Cap Screw 5/16-18 ×1Hex Hd. (SST)	2
41	SC-041-11	Cap Screw 5/16-18 ×3/4 Hex Hd. (SST)	2
42	WL-006-23	Lockwasher 5/16 Medium (SST)	2
43	WS-017-08	Washer	2
44	NS-015-11	Nut 5/16-18 Hex	2
45	742305	Wash Arm- Lower	1
46	742330	Wash Arm (R-L)	1
47	742331	Wash Arm (L-R)	1
48	WS-022-01	Lock washer	4
49	NS-031-21	Nut	4

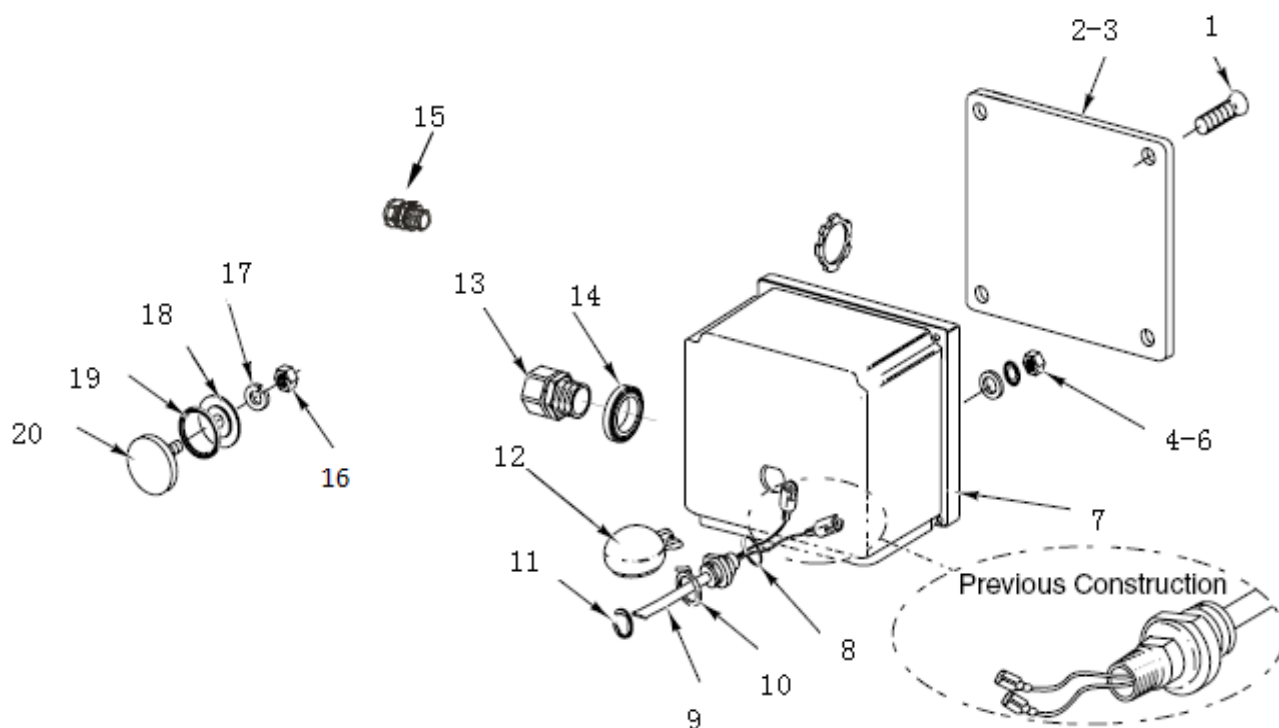


Fig.3 WATER PROTECTION

## C44BBSERIES DISHWASHER REPLACEMENT PARTS

---

### WATER PROTECTION

<b>NO.</b>	<b>PART NO.</b>	<b>NAME OF PART</b>	<b>AMT</b>
1	SD-012-20	Self – Tapping Screw 8-32 ×1/2 Phil. Truss Hd.. Type T	4
2	112007	Gasket	1
3	288465	Lid & Gasket Assy. (Incls Item	1
4	NS-018-28	Jam Nut 1/2 – 20 Hex	1
5	WL-014-31	Lockwasher 1/2 External Shake proof (SST)	1
6	WS-010-40	Washer	1
7	743870	Junction Box – Auto Fill	1
8	67500-72	O Ring	1
--	328495	Probe & Switch Assy. (2 Wire) (Incls Item 9-12)	1
9	328486	Probe & Switch	1
10	122674	Float Assy	1
11	RR-010-13	Retaining Ring	1
12	112647	Retainer – Float	1
13	FE-024-49	Connector – Straight 1/2	1
14	FE-008-10	1/2 Gasket Assy.	1
15	FE-024-57	Connector – Straight 1/2(incls Gasket).	1
16	NS-015-01	Nut 1/4-20 Hex (SST)	1
17	WL-006-17	Lockwasher 1/4 Medium	1
18	119254	Retainer	1
19	67500-31	O Ring	1
20	119244	Cap & Stud Assy	1



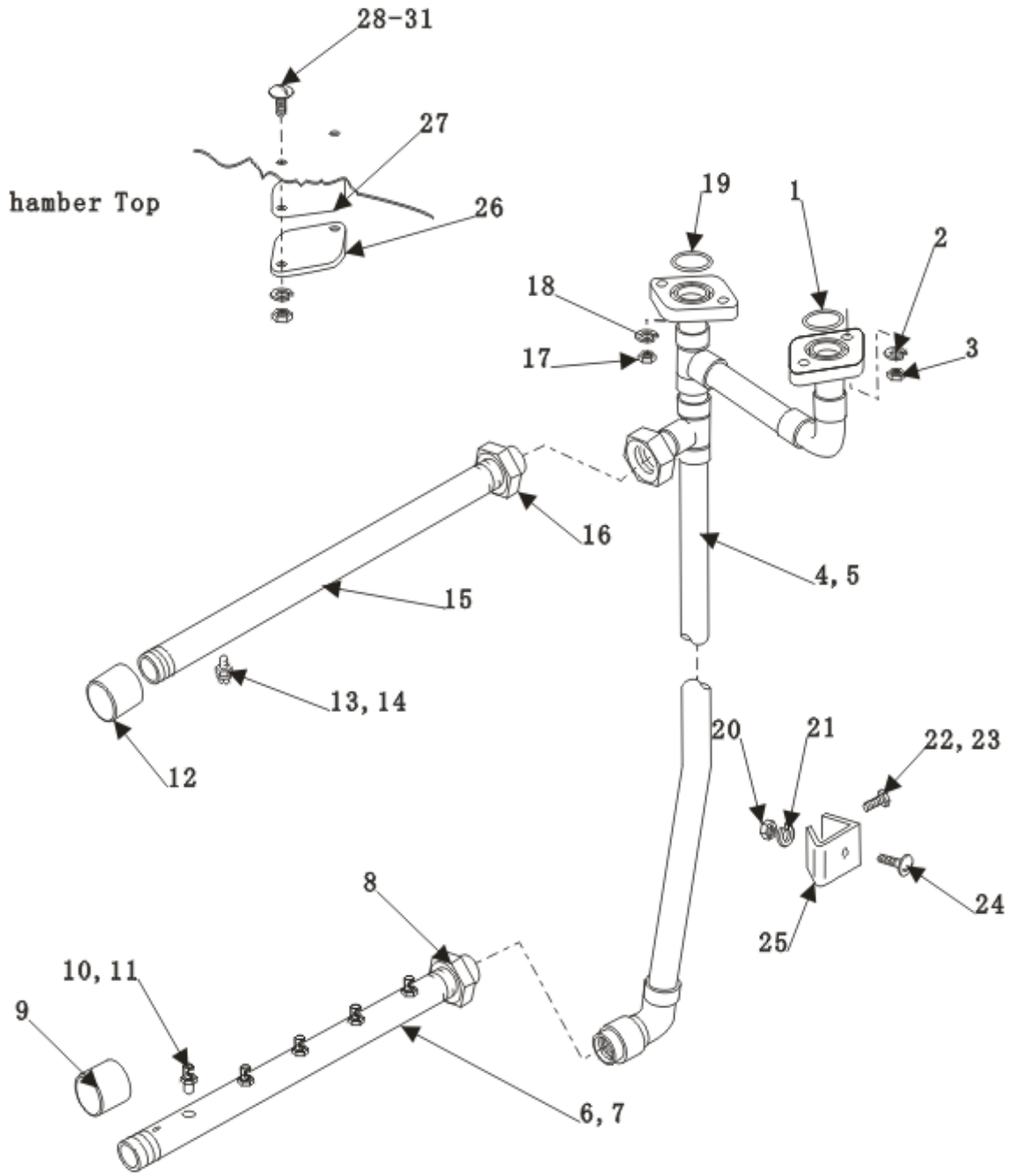


Fig.4 INSIDE METALLIC RINSE PIPING

## C44BBSERIES DISHWASHER REPLACEMENT PARTS

---

### INSIDE METALLIC RINSE PIPING

NO.	PART NO.	NAME OF PART	AMT
1	67500-12	O Ring	1
2	WL-006-23	Lockwasher 5/16 Medium (SST)	2
3	NS-015-11	Nut 5/16-18 Hex.	2
4	742323-T	Final Rinse Inside Piping (R-L)(26 1/8Door Heights)	1
5	742324-T	Final Rinse Inside Piping (L-R) (26 1/8 Door Height)	1
6	328060-1	Lower Rinse Arm	1
7	271024-1	Lower Rinse Arm	1
8	FP-030-27	Lock Nut 1/2 NPSL Pipe (Brass)	1
9	FP-029-08	Pipe Cup 1/2 (Brass)	1
10	328059	Nozzle - Rinse	6
11	22731-1	Nozzle – Rinse	5
12	FP-029-08	Pipe Cup 1/2 (Brass).	1
13	81812-3	Nozzle – Rinse (Brass)	6
14	81812-5	Nozzle – Rinse (Brass0)	6
15	271072-1	Upper Rinse Arm 6 Nozzle (incls Item 12,13,14 & 16)	1
16	FP-030-27	Lock Nut 1/2 NPSL Pipe (Brass)	1
17	NS-015-11	Nut 5/16- 18 Hex	2
18	WL-006-23	Lockwasher 5/16 Medium (SST)	2
19	67500-12	O Ring	1
20	NS-015-11	Nut 5/16- 18 Hex	1
21	WL-006-23	Lockwasher 5/16 Medium (SST)	1
22	SC-053-50	Screw	1
23	WL-006-07	Lockwasher Medium (SST)	1
24	SC-053-15	Mach. Screw 5/16-18 ×1/2 Truss Hd. (SST)	1
25	742157	Bracket	1
26	742219	Flange.	1
27	276407	Gasket – Rinse Pipe	1
28	SC-041-12	Mach. Screw 5/16-18 × 5/8 Truss Hd	2
29	WS-029-05	Washer.	2
30	WL-006-23	Lockwasher 5/16 Medium (SST)	2
31	NS-015-11	Nut 5/16- 18 Hex	2

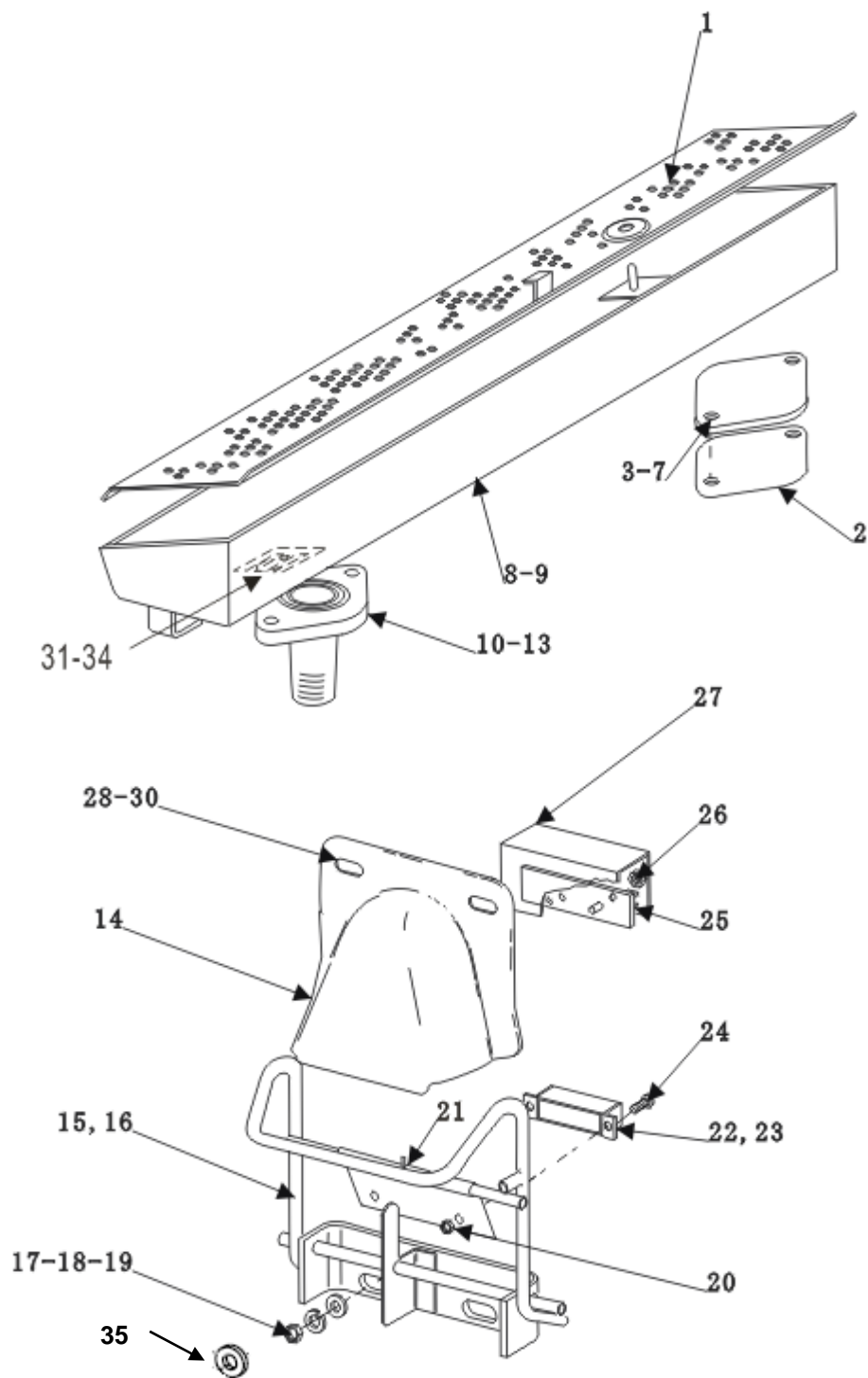


Fig.5 ACTUATOR MECHANISM AND RINSE DRAIN-OFF PAN

## C44BBSERIES DISHWASHER REPLACEMENT PARTS

---

### ACTUATOR MECHANISM AND RINSE DRAIN-OFF PAN

NO.	PART NO.	NAME OF PART	AMT
1	742336	Strainer	1
2	276407	Gasket – Rinse Pipe	1
3	742219	Flange	1
4	SC-041-12	Cap Screw 5/16 – 18 ×7/8 Hex Hd	2
5	WS-029-05	Washer	2
6	WL-006-23	Lockwasher 5/16 Medium (SST)	2
7	NS-015-11	Nut 5/16-18 Hex	2
8	742317	Rinse Pan Assy. (R-L).	1
9	742315	Rinse Pan Assay (L-R)	1
10	475056	Flange & Nipple Assay	1
11	436827	Gasket	1
12	WL-006-23	Lockwasher 5/16 Medium (SST)	2
13	NS-015-11	Nut 5/16-18 Hex.	2
14	436835	Shroud	2
15	742318	Actuator (R-L)	2
16	742319	Actuator (L-R)	2
17	WL-006-23	Lockwasher 5/16 Medium (SST)	4
18	WS-017-08	Washer	4
19	NS-015-11	Nut 5/16-18 Hex.	4
20	NS-031-50	Stop Nut 6-32 Hex (SST)	4
21	PC-005-07	Cotter Pin 3/32 ×1/2	2
22	290160	Magnet	2
23	742026	Retainer – Magnet	2
24	SC-021-08	Mach. Screw 6-32 ×3/8 Rd. Hd. (SST)	4
25	473415	Switch – Reed Encapsulated	2
26	NS-031-50	Stop Nut 6-32 Hex (SST)	4
27	270996	Insulator - Switch	2
28	NS-029-01	Wing Nut 1/4- 20	4
29	WL-006-17	Lockwasher 1/4 Medium	4
30	WS-017-06	Washer	4
31	742192	Panel	1
32	WS-017-06	Washer	2
33	WL-006-17	Lock washer	2
34	NS-015-01	Nut	2
35	WS-029-05	Washer	4

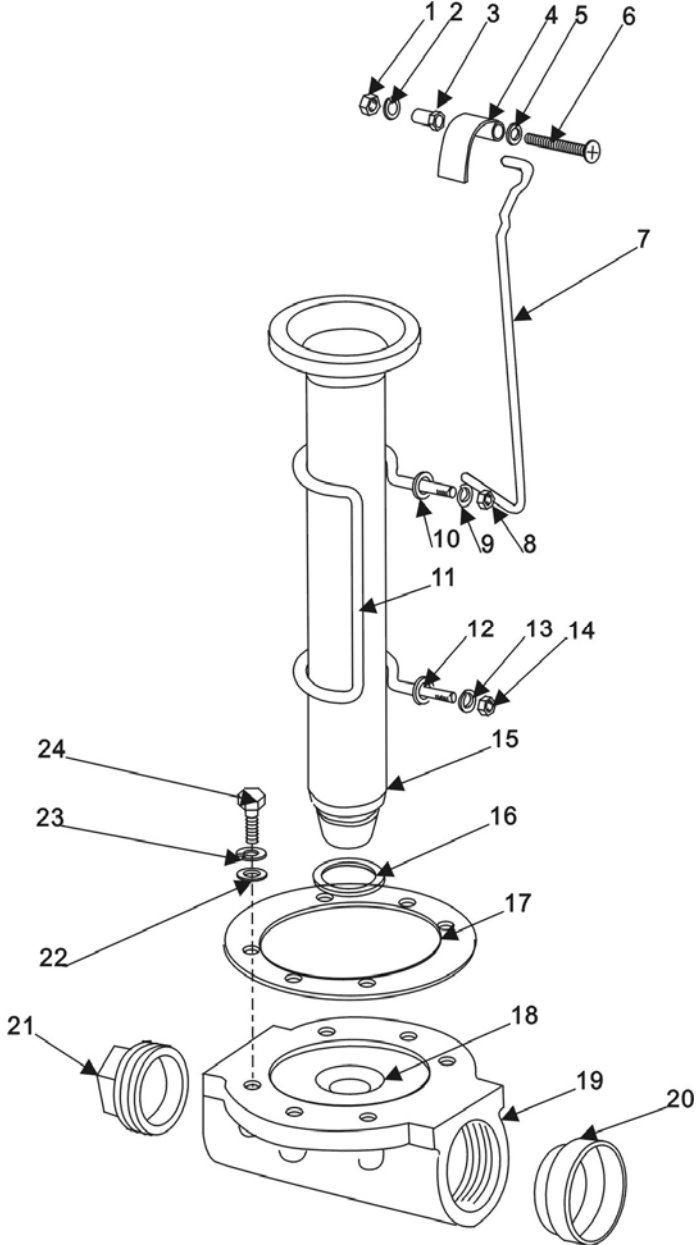


Fig.6 DRAIN UNIT

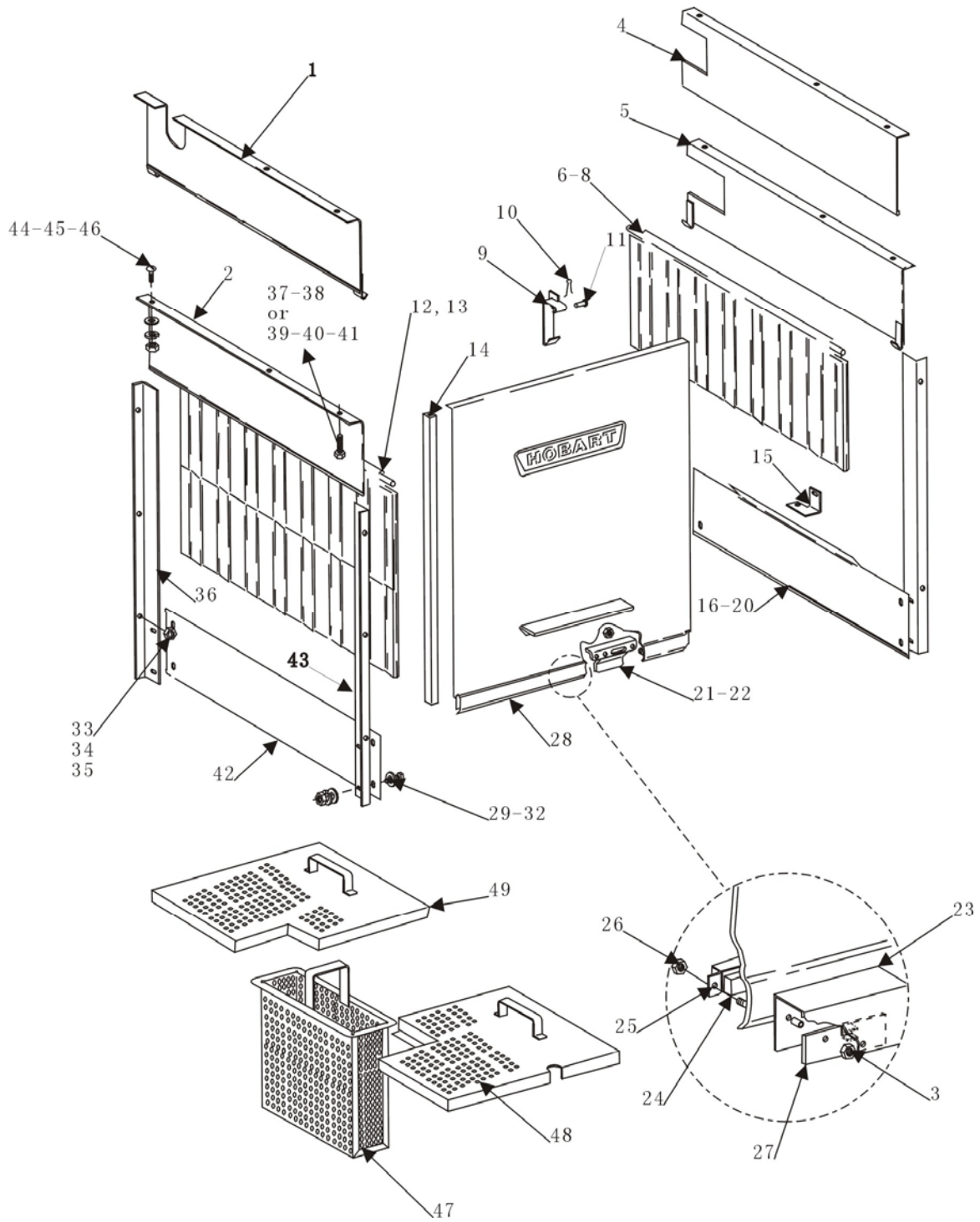
## C44BBSERIES DISHWASHER REPLACEMENT PARTS

---

### DRAIN UNIT

<b>NO.</b>	<b>PART NO.</b>	<b>NAME OF PART</b>	<b>AMT</b>
1	NS-051-01	Nut 1/4-20 Hex (SST)	1
2	WL-006-17	Lockwasher 1/4 Medium	1
3	119116-C1	Axle – Drain Lever	1
4	742095	Drain Lever (RH)	1
5	WS-022-01	Washer	1
6	SCT-M6-35	Screw M6×35 Rd.	1
7	270953	Lift Rod Overflow	1
8	NS-015-11	Nut 5/16-18 Hex	2
9	WL-006-23	Lockwasher 5/16 Medium (SST)	1
10	WS-017-01	Washer	2
11	270952	Retainer	1
12	WS-017-01	Washer.	2
13	WL-006-23	Lockwasher 5/16 Medium (SST)	1
14	NS-015-11	Nut 5/16-18 Hex	2
15	119099-2	Tube- Overflow	1
16	67500-120	O Ring	1
17	289464	Gasket – Drain	1
18	270947	Sleeve – Drain Body	1
19	289465	Drain Body	1
20	328813	Bushing – Drain	1
21	FP-028-32	Pipe Plug 2 Sq. Hd	1
22	WS-006-44	Washer	6
23	WL-006-28	Lockwasher 3/8 –16 ×1 Hex Hd. (SST)	6
24	SC-041-10	Cap Screw 3/8-16 × 1 Hex Hd. (SST)	6

**C44BBSERIES DISHWASHER REPLACEMENT PARTS**



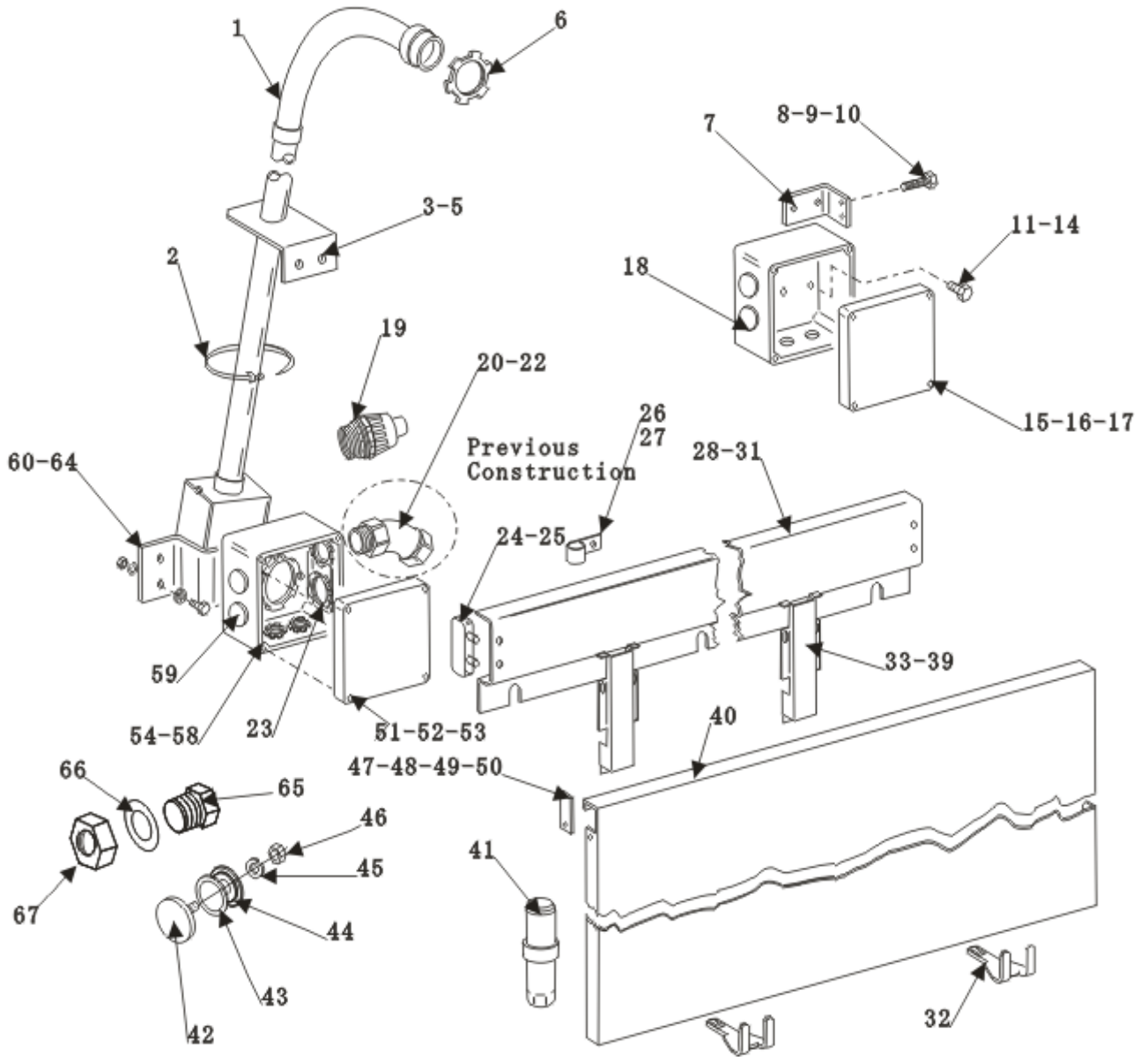
**Fig.7 DOOR, CURTAINS, BAFFLES, AND STRAINERS**

**C44BBSERIES DISHWASHER REPLACEMENT PARTS****DOOR, CURTAINS, BAFFLES, AND STRAINERS**

<b>NO.</b>	<b>PART NO.</b>	<b>NAME OF PART</b>	<b>AMT</b>
1	742334	Baffle – Unloading (R-L)	1
2	742326	Baffle - Loading (L-R)	1
3	NS-031-50	Stop Nut 6-32 Hex (SST)	2
4	742335	Baffle – Loading (R-L)	1
5	742302	Baffle – Unloading (L-R).	1
6	120151-1	Splash Curtain	1
7	120151-1	Splash Curtain. (Gas heat)	1
8	742222	Curtain Rod	2
9	742312	Catch – Door	1
10	PC-005-02	Cotter Pin 1/16 ×1/2 (SST)	1
11	12114	Pin	1
12	271084	Splash Curtain	2
13	742222	Curtain Rod	2
14	112378-49	Door Slide	2
15	742158	Bracket (ONLY L-R)	1
16	742160	Baffle (ONLY L-R)	1
17	SC-041-05	Cap Screw 1/4 –20 × 5/8 Hex Hd. (SST).	3
18	WL-006-17	Lockwasher 1/4 Medium	3
19	WS-017-06	Washer	3
20	NS-015-01	Nut 1/4 – 20 Hex (SST)	6
21	328065	Actuator – Lift Drain	1
22	NS-031-21	Stop Nut – Special 1/4-20 Hex	2
23	270996	Insulator – Switch	1
24	290160	Magnet	2
25	742026	Retainer – Magnet	2
26	NS-031-50	Stop Nut 6-32 Hex (SST)	2
27	294854	Reed Mounting Board Assy(old no.473415)	1
28	742321	Door	1
29	SC-041-05	Cap Screw 1/4 –20 × 5/8 Hex Hd. (SST)	4
30	WS-017-06	Washer	8
31	WL-006-17	Lockwasher 1/4 Medium	4
32	NS-015-01	Nut 1/4–20 Hex (SST)	4
33	WS-022-01	Washer	9
34	WL-006-17	Lockwasher 1/4 Medium	9
35	NS-015-01	Nut 1/4–20 Hex (SST)	9
36	742161	Baffle - Vertical	2
37	WL-006-17	Lockwasher 1/4 Medium	4
38	SC-041-50	Cap Screw 1/4 –20 × 5/8 Hex Hd. (SST)	4
39	WS-022-01	Washer	4
40	WL-006-17	Lockwasher 1/4 Medium	4
41	NS-015-01	Nut 1/4–20 Hex (SST)	4
42	742159	Baffle – LH Lower	1
43	742161	Baffle - Vertical	1
44	SC-053-41	Mach. Screw 1/4-20 × 1/2 Truss Hd. (SST)	2
45	WL-006-17	Lockwasher 1/4 Medium	2
46	NS-015-01	Nut 1/4–20 Hex (SST)	2
47	742311	Bucket – Strainer	1
48	742310	Strainer - Front	1
49	742309	Strainer – Rear	1



**C44BBSERIES DISHWASHER REPLACEMENT PARTS**



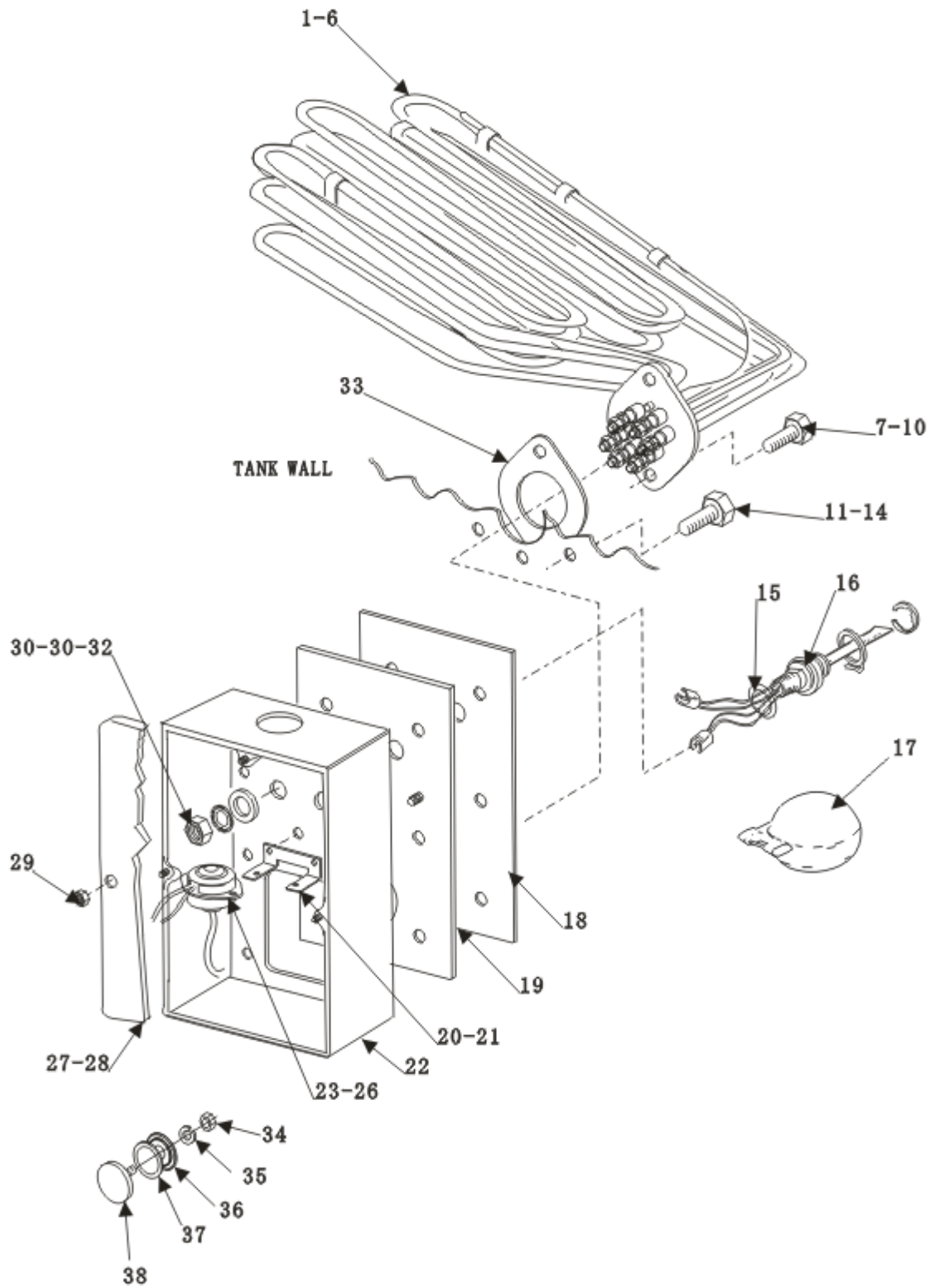
**Fig.8 MISCELLANEOUS**

## C44BBSERIES DISHWASHER REPLACEMENT PARTS

### MISCELLANEOUS

NO.	PART NO.	NAME OF PART	AMT
1	274232-C	Conduit – PVC( Incls. Bracket)..	1
2	122577-2	Wire Tie	2
3	SC-041-50	Cap Screw 1/4-20 × 1/2 Hex Hd	2
4	WL-006-17	Lockwasher 1/4 Medium	2
5	NS-015-01	Nut 1/4– 20 Hex (SST)	2
6	FE-009-07	Lock Nut 3/4	2
7	742215	Bracket	1
8	SC-041-12	Cap Screw 5/16-18 × 7/8 Hex Hd	2
9	WL-006-23	Lockwasher 5/16 Medium	2
10	NS-015-11	Nut 5/6 –18 Hex (SST)	2
11	SC-041-05	Cap Screw 1/4-20 × 5/8 Hex Hd	2
12	WS-003-49	Washer	2
13	WL-006-17	Lockwasher 1/4 Medium	2
14	NS-015-01	Nut 1/4-20 Hex (SST)	2
15	288465	Lid & Gasket Assy. (Incls Item 16)	1
16	112007	Gasket	1
17	SD-012-20	Self- Tapping Screw 8-32 ×1/2 Phil. Truss Hd., Type T	4
18	270923-2	Box – Junction (R.H)	1
19	FE-024-58	Connector 3/4”(Incls. O Ring & Lock Nut)	1
20	FE-008-44	Connector 3/4”(Incls. O Ring & Lock Nut).(Replaced by item19)	2
21	FE-008-11	Ring-Seal	2
22	FE-006-06	Nut	2
23	FE-024-59	Connector 1” ((Incls. O Ring & Lock Nut).	2
24	271057	Cap – Wire way	2
25	SD-007-38	Self-Tapping Screw 8 × 1/4 Phil. Bind Hd., Type B	2
26	294677-3	Clamp – Wire (3/4 I.D)	6
27	NS-047-94	Lock Nut Special 3/16	6
28	742137	Panel – Front Trim.	1
29	WS-017-06	Washer	3
30	WL-006-17	Lockwasher 1/4 Medium	3
31	NS-015-01	Nut 1/4-20 Hex (SST)	3
32	742201	Support	2
33	742136	Wire way – Vertical	2
34	SC-021-22	Screw	2
35	WL-006-07	Lockwasher #10 Medium	2
36	WS-017-06	Washer	4
37	WL-006-17	Lockwasher 1/4 Medium	4
38	NS-015-01	Nut 1/4-20 Hex (SST)	4
39	WS-019-19	Washer	2
40	742139	Panel – Front Trim (C44B&C44BW)	1
41	288946-C	Food - Adjustable (China)	4
42	119244	Cap & Stud Assy	1
43	67500-31	O Ring	1
44	119254	Retainer – Cap & Stud	1
45	WL-006-17	Lockwahaer 1/4 Medium	1
46	NS-015-01	Nut 1/4-20 Hex (SST)	1
47	742138	Cover – Panel Notch	2
48	SC-053-05	Mach. Screw 10-24 ×3/8 Phil. Truss Hd	2
49	WS-019-06	Washer	2
50	NS-031-16	Stop Nut 10-24 hex (SST)	2
51	288465	Lid & Gasket Assy. (Incls. Item 52)	1
52	112007	Gasket.	1
53	SD-012-20	Self – Tapping Screw 8-32×1/2 Phil. Truss Hd., Type T.	4
54	270923-1	Box – Junction (LH)	1
55	SC-041-05	Cap Screw 1/4 – 20 ×5/8 Hex Hd. (SST).	2
56	WS-003-49	Washer	2
57	WL-006-17	Lockwasher 1/4 Medium	2
58	NS-015-01	Nut 1/4-20 Hex (SST)	2
59	PB-004-08	Plug	5
60	742144	Bracket	1
61	SC-041-12	Cap Screw 5/16 – 18 × 7/8 Hex Hd	2
62	WS-017-08	Washer	2
63	WL-006-23	Lockwasher 5/16 Medium (SST)	2
64	NS-015-11	Nut 5/16 – 18 Hex	2
65	107218	Coupling – Thermometer Bulb.	1
66	WS-012-40	Washer	2
67	FP-053-05	Nut	1

**C44BBSERIES DISHWASHER REPLACEMENT PARTS**



**Fig.9 ECLECTRIC HEAT**

**C44BBSERIES DISHWASHER REPLACEMENT PARTS****ECLECTRIC HEAT**

<b>NO.</b>	<b>PART NO.</b>	<b>NAME OF PART</b>	<b>AMT</b>
1	473275-1	Heater – tank Electric (200v/3Ph, 7.5kw)	1
2	473275-2	Heater – tank Electric (220v/1Ph, 7.5kw)	1
3	473275-6	Heater – tank Electric (380v/50Hz/3Ph, 7.5kw)	1
4	473276-1	Heater – tank Electric (200v/3Ph, 5kw)	1
5	473276-2	Heater – tank Electric (220v/3Ph, 5kw)	1
6	473276-6	Heater – tank Electric (380v/3Ph, 5kw) (C44BW)	1
7	SC-041-13	Cap Screw 5/16-18 ×1 Hex Hd. (SST)	2
8	WS-017-08	Washer	2
9	WL-006-23	Lockwasher 5/16 Medium (SST)	2
10	NS-015-11	Nut 5/16 – 18 Hex	2
11	SC-041-13	Cap Screw 5/16-18 ×1 Hex Hd. (SST)	6
12	WS-029-05	Washer	12
13	WL-006-23	Lockwasher 5/16 Medium (SST)	6
14	NS-015-11	Nut 5/16 – 18 Hex	6
15	67500-72	O Ring	1
16	186091	Probe & Switch Assy. (4 Wire)(Incls. Item 17)	1
17	122674	Float Assy	1
18	271109	Gasket – Mounting	1
19	742325	Plate – Mounting	1
20	742212	Bracket – Thermostat	1
21	NS-031-15	Stop Nut 10-24 Hex (SST)	2
22	742337	Box - Electric	1
23	271123	Protector- High Limit	1
24	SC-021-08	Mach. Screw 6-32 × 3/8 Rd. Hd. (SST)	2
25	NS-031-50	Stop Nut 6-32 Hex (SST)	2
26	293946	Sleeve	1
27	742228	Lid & Gasket Assy. (Incls item30)	1
28	112005	Gasket (Lid)	1
29	NS-031-15	Nut	4
30	WS-010-40	Washer	2
31	WL-014-31	Lockwasher 1/2 External Shake proof (SST).	2
32	NS-018-28	Jam Nut 1/2 – 20 Hex	2
33	293598	Gasket – heater Mounting	1
	294357-1	Housing – Connector (Nat).	AR
	294357-2	Housing – Connector (Black)	AR
34	NS-015-01	Nut 1/4-20 Hex (SST)	1
35	WL-006-17	Lockwasher 1/4 Medium	1
36	119254	Cap & Stud Assy.	1
37	67500-31	O Ring	1
38	119244	Retainer – Cap & Stud	1

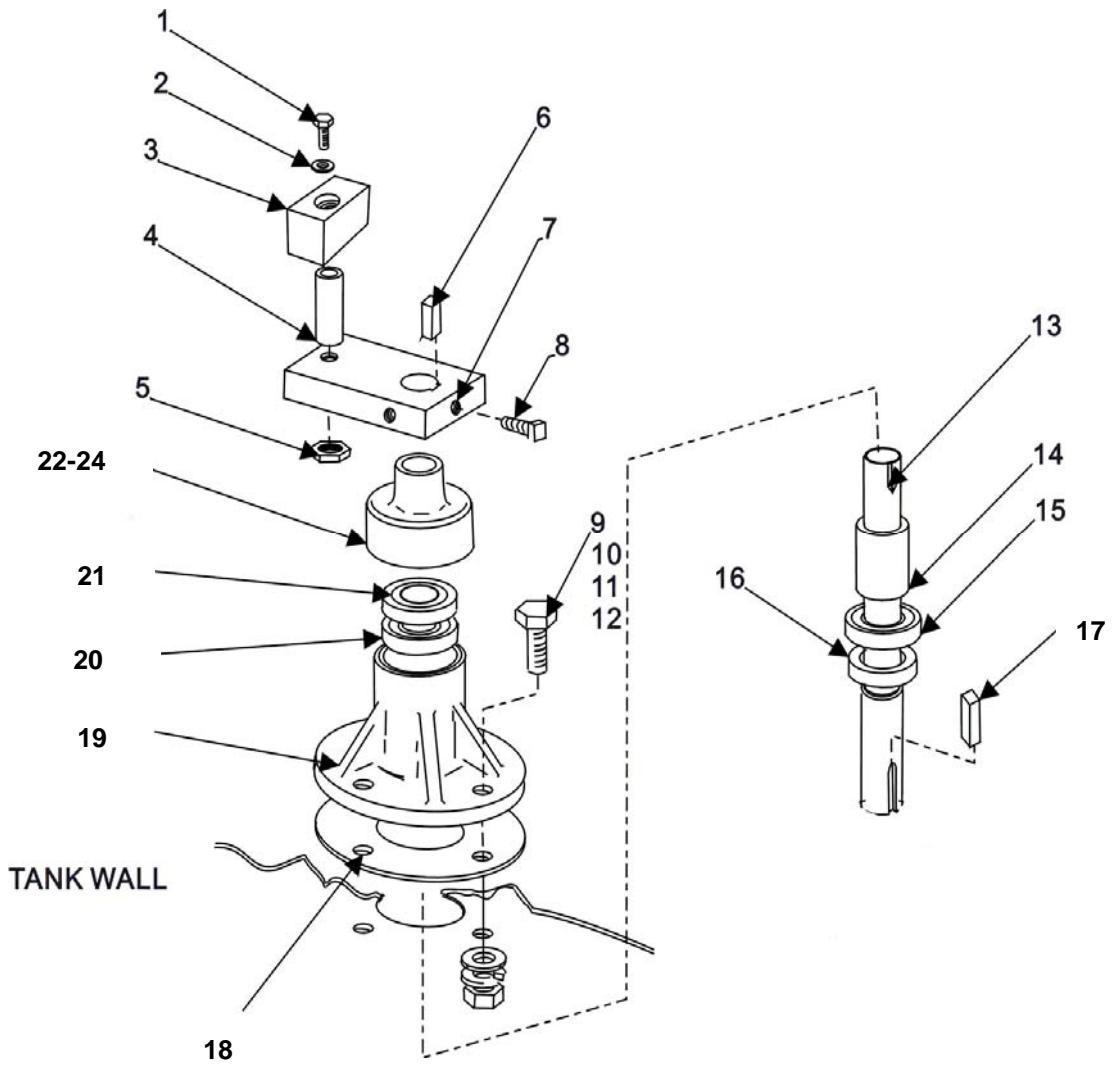


Fig.10 CONVEYOR DRIVE TRAIN

## C44BBSERIES DISHWASHER REPLACEMENT PARTS

---

### CONVEYOR DRIVE TRAIN

NO.	PART NO.	NAME OF PART	AMT
1	SC-041-20	Cap Screw 5/16 – 18 × 2 1/8 Hex Hd	1
2	WS-017-08	Washer	1
3	474660	Slide – Drive Crank	1
4	437061	Spacer – Bearing	1
5	NS-032-35	Stop Nut 5/16 – 18 Flex loc	1
6	12430-39	Key 3/16 Sq. ×3/8 Lg.	1
7	270943	Arm – Crank	1
8	SC-050-01	Set Screw1/4-20×1/2Square Hd. Cup Pt	2
9	SC-041-13	Cap Screw 5/16 –18 ×1 Hex Hd. (SST)	4
10	WS-017-08	Washer	4
11	WL-006-23	Lockwasher 5/16 Medium (SST)	4
12	NS-015-11	Nut 5/16 – 18 hex	4
13	270937	Shaft – Crank.	1
14	436879	Spacer – Bearing	1
15	BB-021-19	Ball Bearing – Hoover NSK 6003	1
16	270939	Seal – Lower Housing	1
17	12430-40	Key 3/16 Sq. × 3/4Lg	1
18	270942	Gasket	1
19	274749	Housing Assay (incl. Item 13-16,20-22)	1
20	BB-021-19	Ball Bearing – Hoover NSK 6003	1
21	270940	Seal – upper Housing	1
22	274748	Seal Labyrinth	1
23	527042	Adhesive	AR
24	522696	Solvent.	AR

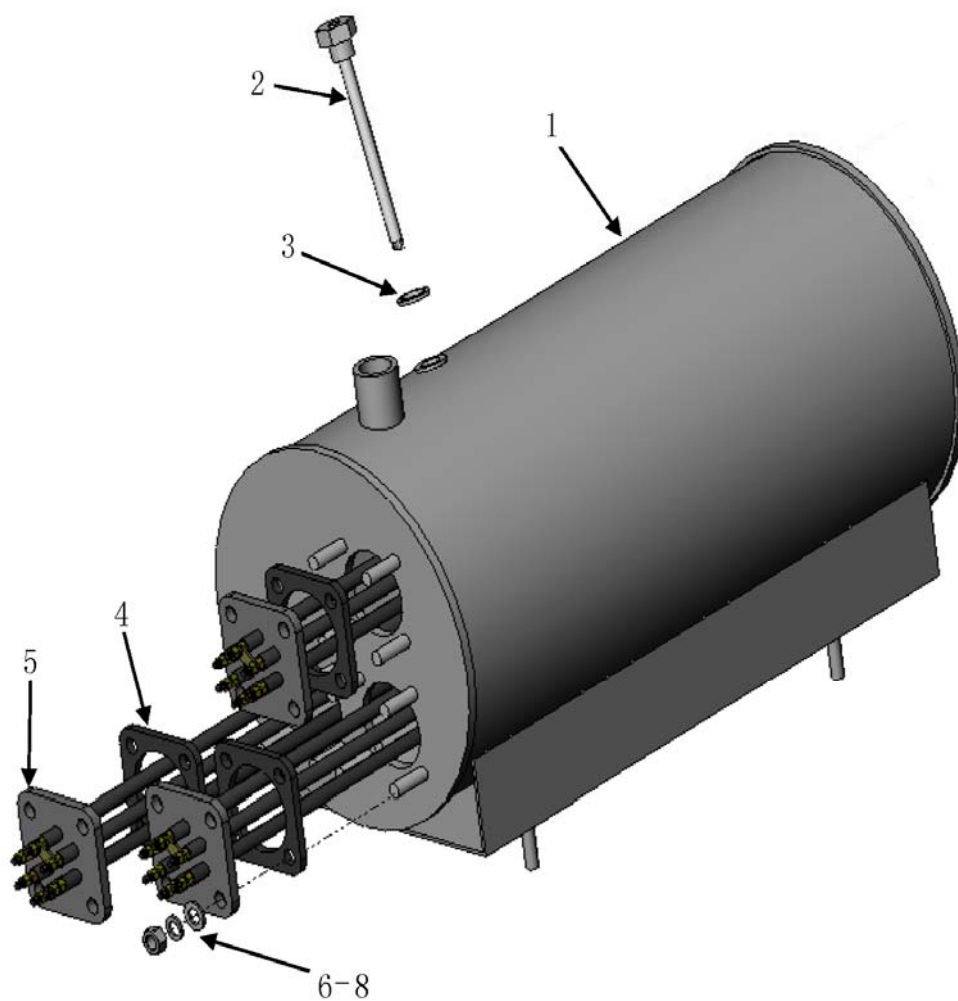


Fig.11 BOOSTER ASSY

## C44BBSERIES DISHWASHER REPLACEMENT PARTS

---

### BOOSTER ASSY

<b>NO.</b>	<b>PART NO.</b>	<b>NAME OF PART</b>	<b>AMT</b>
1	7152011	Barrel	1
2	7155203	Thermostat Sensor Tube	1
3	7155206	Seal Washer 14	1
4	743800-10	Gasket	1
5	743800-5	Electric Heater 9KW	1
6	NS-M8	Nut	3
7	WL-M8	Lockwasher	3
8	WS-M8	Washer	12



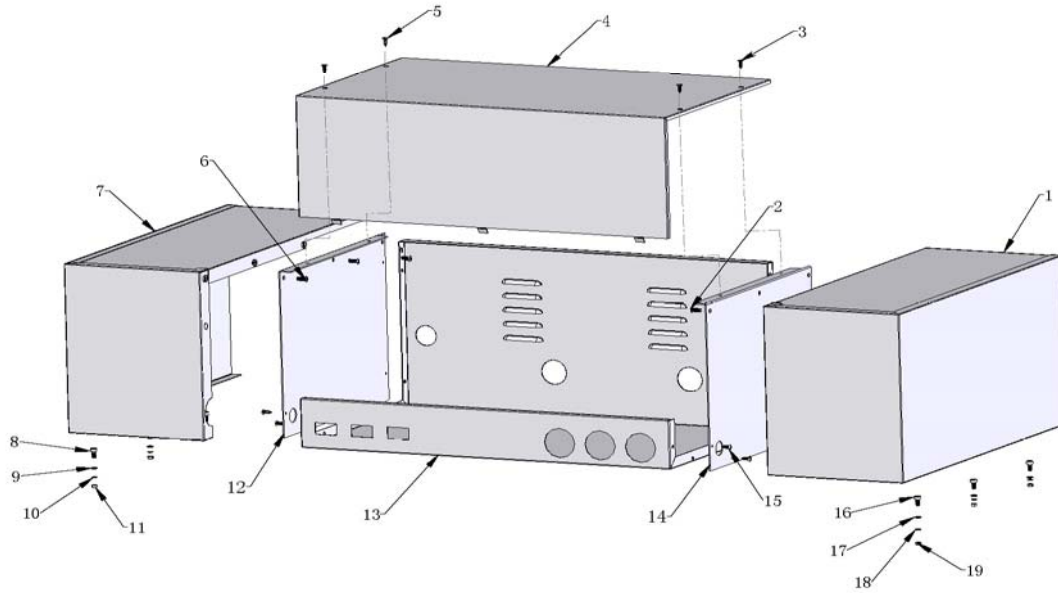


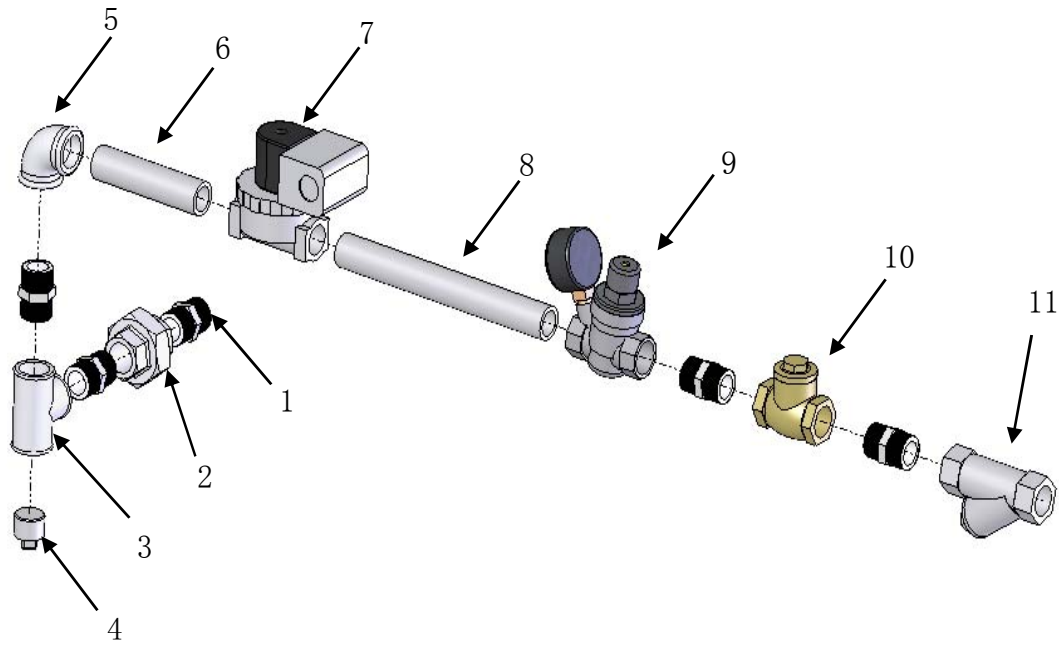
Fig.12 CONTROL BOX AND BOOSTER COVER

## C44BBSERIES DISHWASHER REPLACEMENT PARTS

---

### CONTROL BOX AND BOOSTER COVER

NO.	PART NO.	NAME OF PART	AMT
1	7152013	Right Hood-Booster	1
2	SCH-M6-10	Cap Screw	3
3	ST4.8-10	Self-tapping Screw	2
4	7152015	Cover-Control Box	1
5	ST4.8-10	Self-tapping Screw	2
6	SCH-M6-10	Cap Screw	3
7	7152014	Left Hood-Booster	1
8	7152010	Pin	3
9	WS-M6	Washer	3
10	WL-M6	Lockwasher	3
11	NS-M6	Nut	3
12	7152005	Left-Base Plate	1
13	7152012	Control Box.	1
14	7152004	Right-Base Plate	1
15	ST4.8-10	Self-tapping Screw	10
16	7152010	Pin	3
17	WS-M6	Washer	3
18	WL-M6	Lockwasher	3
19	NS-M6	Nut	3



**Fig.13 INLET PIPING**

## C44BBSERIES DISHWASHER REPLACEMENT PARTS

---

### INLET PIPING

<b>NO.</b>	<b>PART NO.</b>	<b>NAME OF PART</b>	<b>AMT</b>
1	743848	Connector-Male 3/4	5
2	743849	Union 3/4	1
3	743847	Tee-Joint 3/4	1
4	FP-028-19	Pipe Plug 3/4	1
5	FP-015-23	Elbow 3/4	1
6	FP-041-87	Nipple 3/4	1
7	271002-1	Solenoid Valve 3/4(120V)	1
8	FP-042-12	Nipple 3/4	1
9	743859	Reduce Valve 3/4	1
10	7152049	Direction Valve 3/4	1
11	186922	Line Strainer 3/4	1

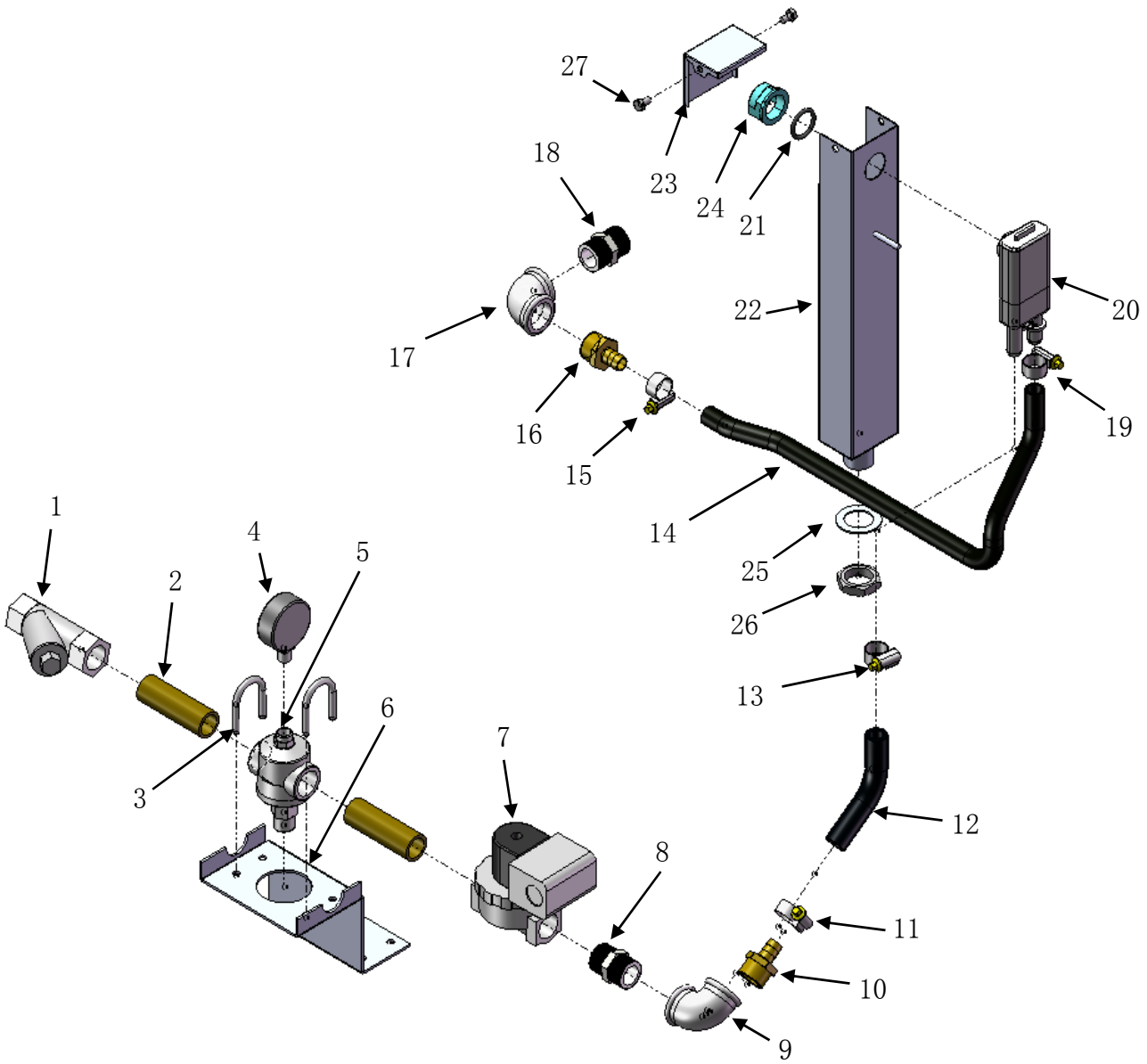


Fig.13 INLET PIPING (09-05-22)

**C44BBSERIES DISHWASHER REPLACEMENT PARTS**

---

**INLET PIPING (09-05-22)**

<b>NO.</b>	<b>PART NO.</b>	<b>NAME OF PART</b>	<b>AMT</b>
1	186922	Line Strainer 3/4	1
2	7152017-4	Nipple 3/4	2
3	743909	U Clamp	2
4	7155314-4	Meter	1
5	7155314-3	Reduce Valve 3/4	1
6	7152016-1	Bracket	1
7	271002-1	Solenoid Valve 3/4(120V)	1
8	743848	Connector-Male 3/4	1
9	FP-015-23	Elbow 3/4	1
10	743284	Nipple	1
11	743315	Hose Clamp	1
12	7152016-2	Inlet hose of airgap	1
13	743315	Hose Clamp	1
14	7152016-5	Outlet hose of airgap	1
15	743315	Hose Clamp	1
16	743284	Nipple	1
17	FP-015-23	Elbow 3/4	1
18	743848	Connector-Male 3/4	1
19	743315	Hose Clamp	1
20	775759-1	Air gap	1
21	67500-10	O-ring	1
22	7152016-3	Overflow box	1
23	7152016-4	Cap	1
24	324183	Nut	1
25	WS-13-45	Washer	1
26	7155303-10	Nut	1
27	SCH-M5-12	Cap Screw M5X12	2



**C44BBSERIES DISHWASHER REPLACEMENT PARTS**

---

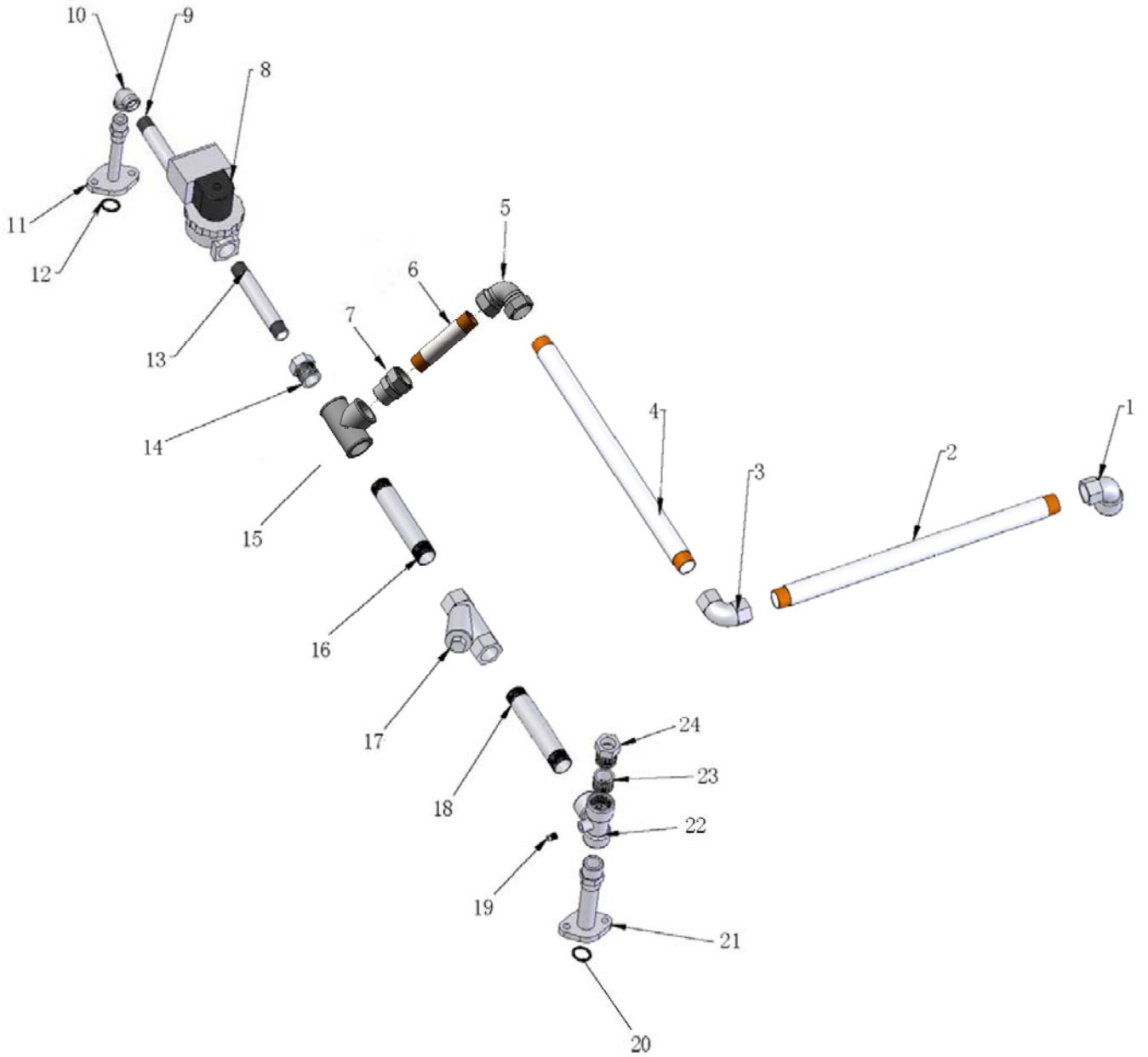
**OUTLET PIPING I**

<b>NO.</b>	<b>PART NO.</b>	<b>NAME OF PART</b>	<b>AMT</b>
1	7152017-7	C105 Elbow	1
2	7152017-1	Piping (φ22x307)	1
3	7152017-6	C103 Elbow	1
4	7152017-2	Piping (φ22x335)	1
5	7152017-8	C106 Elbow	1
6	277112	Vacuum Breaker 3/4	1
7	7152017-8	C106 Elbow	1
8	7152017-3	Piping (φ22x117)	1
9	271006-1	Solenoid Valve 3/8(120V)	1
10	FP-040-27	Nipple 3/8	1
11	FP-015-09	Elbow 3/8	1
12	473309	Fill Piping-Outside 3/8	1
13	67500-12	O-Ring	1
14	FP-076-05	Nipple 3/8	1
15	FP-027-16	Nipple 3/4-3/8	1
16	7152017-9	C108 Connector	1
17	743847	Tee-Joint 3/4	1
18	7152017-4	Nipple 3/4	1
19	186922	Line Strainer 3/4	1
20	7152017-4	Nipple 3/4	1
21	FP-028-03	Pipe Plug 1/8	1
22	67500-12	O-Ring	1
23	473308	Rinse piping 3/4	1
24	7152017-5	Tee-Joint 3/4	1
25	FP-027-19	Nipple 3/4-1/2	1
26	107218	Coupling-Thermometer Bulb	1



**C44BBSERIES DISHWASHER REPLACEMENT PARTS**

---



**Fig.14 OUTLET PIPING I (09-05-22)**

**C44BBSERIES DISHWASHER REPLACEMENT PARTS**

---

**OUTLET PIPING I (09-05-22)**

<b>NO.</b>	<b>PART NO.</b>	<b>NAME OF PART</b>	<b>AMT</b>
1	7152017-7	C105 Elbow	1
2	7152017-1	Piping (φ22x242)	1
3	7152017-6	C103 Elbow	1
4	7152017-2	Piping (φ22x390)	1
5	7152017-6	C103 Elbow	1
6	7152017-3	Piping (φ22x90)	1
7	7152017-9	C108 Connector	1
8	271006-1	Solenoid Valve 3/8(120V)	1
9	FP-040-27	Nipple 3/8	1
10	FP-015-09	Elbow 3/8	1
11	473309	Fill Piping-Outside 3/8	1
12	67500-12	O-Ring	1
13	FP-076-05	Nipple 3/8	1
14	FP-027-16	Nipple 3/4-3/8	1
15	743847	Tee-Joint 3/4	1
16	7152017-4	Nipple 3/4	1
17	186922	Line Strainer 3/4	1
18	7152017-4	Nipple 3/4	1
19	FP-028-03	Pipe Plug 1/8	1
20	67500-12	O-Ring	1
21	473308	Rinse piping 3/4	1
22	7152017-5	Tee-Joint 3/4	1
23	FP-027-19	Nipple 3/4-1/2	1
24	107218	Coupling-Thermometer Bulb	1

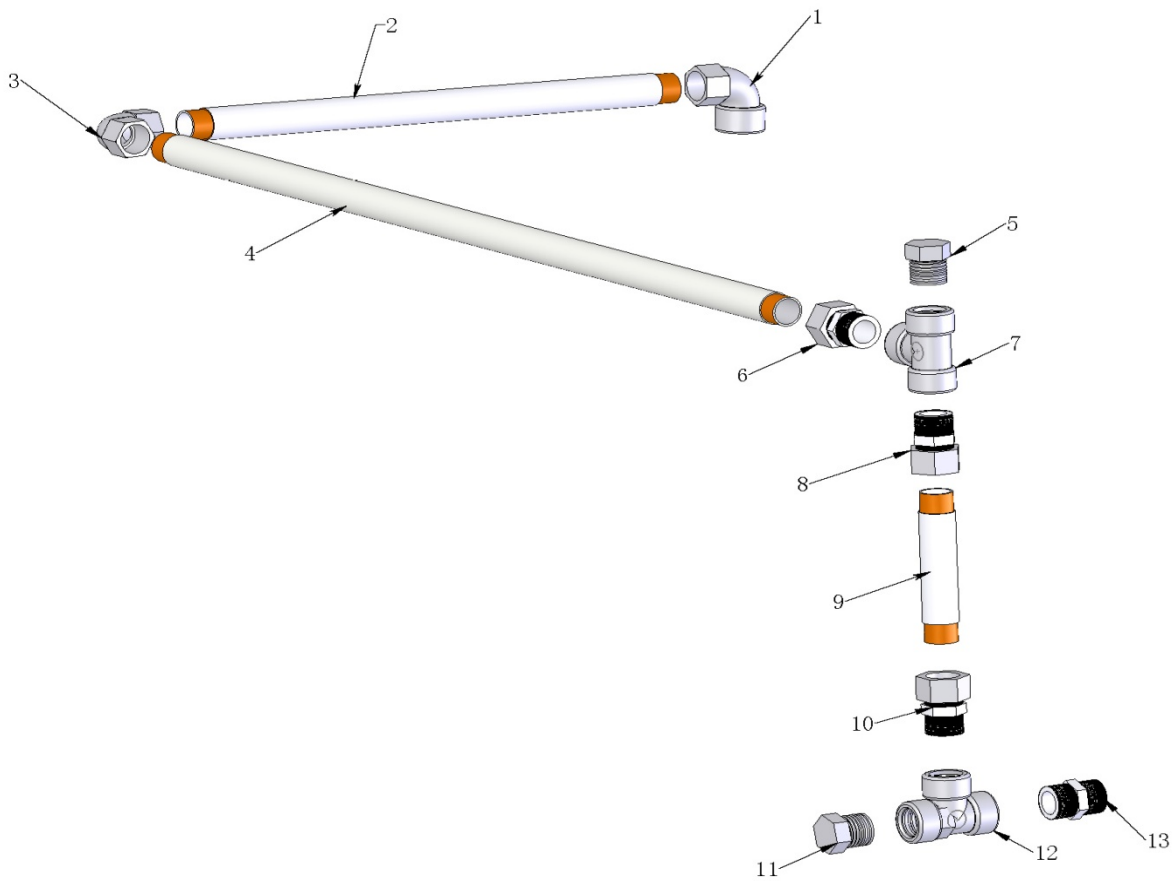


Fig.15 OUTLET PIPING II

## C44BBSERIES DISHWASHER REPLACEMENT PARTS

---

### OUTLET PIPING II

NO.	PART NO.	NAME OF PART	AMT
1	7152017-7	C105 Elbow	1
2	7152019-3	Piping (φ22x403)	1
3	7152017-6	C103 Elbow ...	1
4	7152019-2	Piping (φ22x812)	1
5	FP-028-19	Pipe Plug 3/4	1
6	7152017-9	C108 Connector	1
7	743847	Tee-Joint 3/4	1
8	7152017-9	C108 Connector	1
9	7152019-1	Piping (φ22x123)	1
10	7152017-9	C108 Connector...	1
11	FP-028-19	Pipe Plug 3/4	1
12	743847	Tee-Joint 3/4	1
13	743848	Connector-Male 3/4...	1

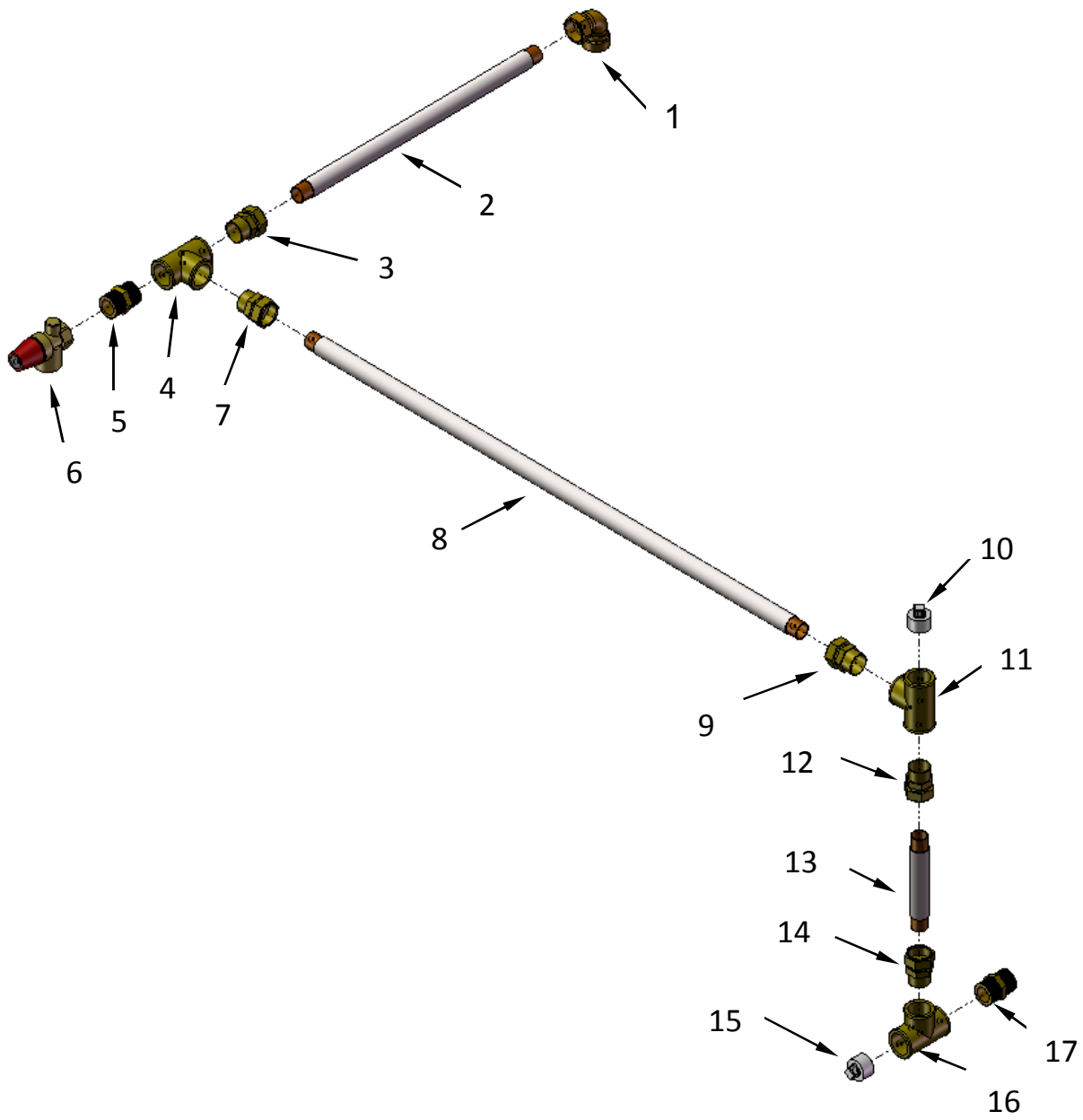


Fig.15 OUTLET PIPING II (09-05-22)

**C44BBSERIES DISHWASHER REPLACEMENT PARTS**

---

**OUTLET PIPING II (09-05-22)**

<b>NO.</b>	<b>PART NO.</b>	<b>NAME OF PART</b>	<b>AMT</b>
1	7152017-7	C105 Elbow	1
2	7152019-3	Piping (φ22x375)	1
3	7152017-9	C108 Connector	1
4	743847	Tee-Joint 3/4	1
5	743848	Connector-Male 3/4	1
6	743856	Safety Valve 3/4	1
7	7152017-9	C108 Connector	1
8	7152019-2	Piping (φ22x787)	1
9	7152017-9	C108 Connector	1
10	FP-028-19	Pipe Plug 3/4	1
11	743847	Tee-Joint 3/4	1
12	7152017-9	C108 Connector	1
13	7152019-1	Piping (φ22x123)	1
14	7152017-9	C108 Connector	1
15	FP-028-19	Pipe Plug 3/4	1
16	743847	Tee-Joint 3/4	1
17	743848	Connector-Male 3/4	1

# C44BBSERIES DISHWASHER REPLACEMENT PARTS

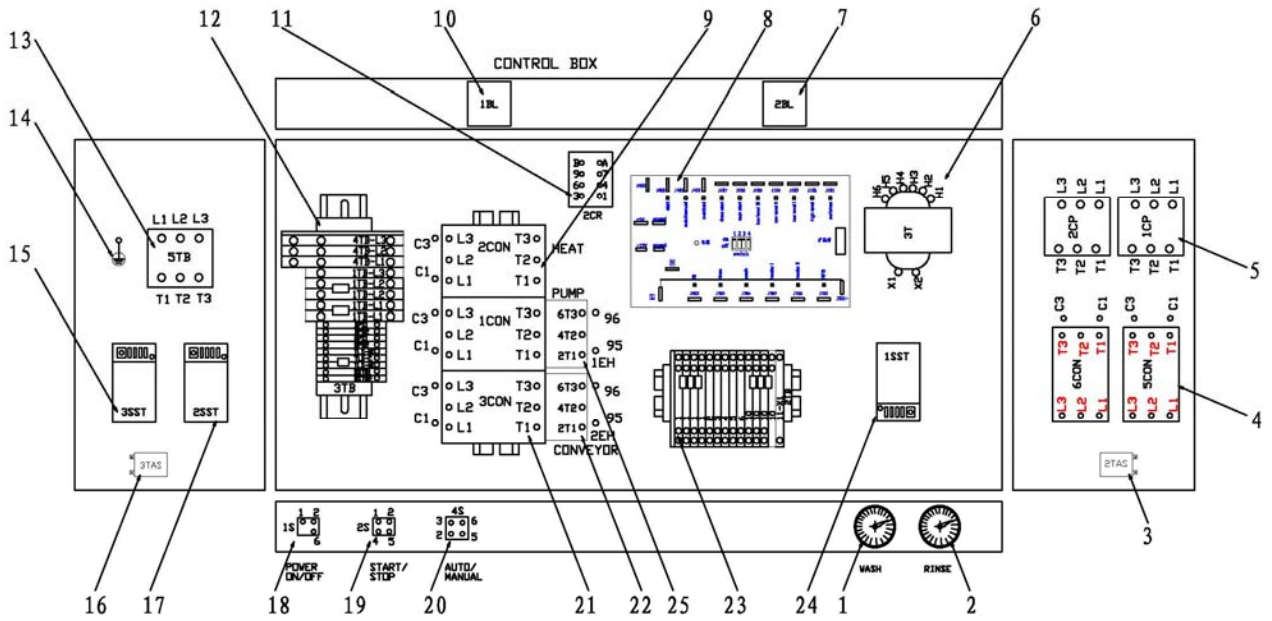


Fig.16 COMPONENT PANEL (NEW)

**C44BBSERIES DISHWASHER REPLACEMENT PARTS****COMPONENT PANEL(NEW)**

<b>NO.</b>	<b>PART NO.</b>	<b>NAME OF PART</b>	<b>AMT</b>
1	437041-4	Thermometer(Wash)	1
2	437041-3	Thermometer(Rinse)	1
3	743845	Thermostat 110° C.	1
4	7152037	Contactor 80Amp. 3 Pole	2
5	7152038	Circuit Breaker 60A/3P	2
6	294500-024-2	Transformer	1
7	743843	Fan Cooling(120V)	1
8	7152034	PC Plate	1
9	7112011	Contactor 50Amp. 3 Pole	1
10	743843	Fan Cooling(120V)	1
11	87714-7-2	Relay	1
12	7152039	Terminal Block	1
13	7152033	Terminal Block	1
14	118544-2	Lug- Grounding	1
15	7151001-2	Thermostat-Solid State	1
16	743845	Thermostat 110° C	1
17	7151001-2	Thermostat-Solid State	1
18	87711-198-1	Switch-Rocker(Power On/Off).	1
19	87711-228-1	Switch-Rocker(Motor On/Off)	1
20	87711-241-1	Switch-Rocker(Timer On/Off)	1
21	7112002	Contactor 25Amp. 3 Pole	2
22	7152036	Relay	1
23	7152025	Terminal Block	1
24	475458-1	Thermostat-Solid State.	1
25	7152044	Relay	1



# C44BBSERIES DISHWASHER REPLACEMENT PARTS

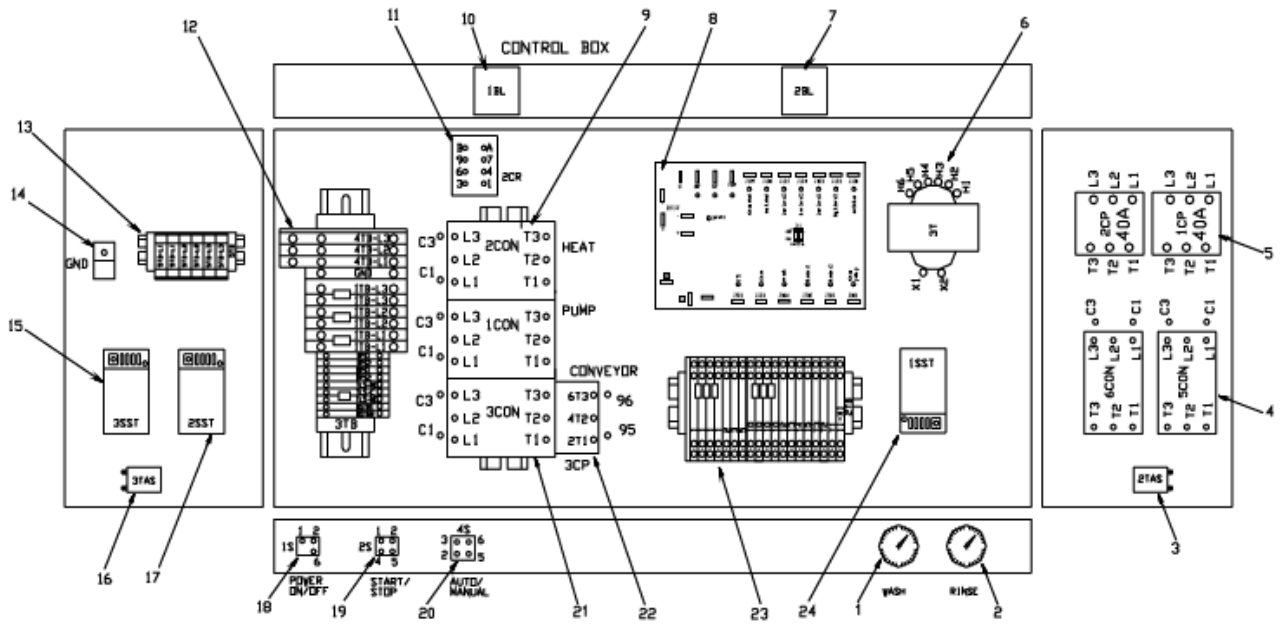


Fig.17 COMPONENT PANEL

**C44BBSERIES DISHWASHER REPLACEMENT PARTS**

---

**COMPONENT PANEL**

<b>NO.</b>	<b>PART NO.</b>	<b>NAME OF PART</b>	<b>AMT</b>
1	437041-4	Thermometer(Wash)	1
2	437041-3	Thermometer(Rinse)	1
3	743845	Thermostat 110° C.	1
4	7152037	Contactora 80Amp. 3 Pole	2
5	7152038	Circuit Breaker 60A/3P	2
6	294500-024-2	Transformer	1
7	743843	Fan Cooling(120V)	1
8	7152034	PC Plate	1
9	7112011	Contactora 50Amp. 3 Pole	1
10	743843	Fan Cooling(120V)	1
11	87714-7-2	Relay	1
12	7152039	Terminal Block	1
13	7152033	Terminal Block	1
14	118544-2	Lug- Grounding	1
15	7151001-2	Thermostat-Solid State	1
16	743845	Thermostat 110° C	1
17	7151001-2	Thermostat-Solid State	1
18	87711-198-1	Switch-Rocker(Power On/Off).	1
19	87711-228-1	Switch-Rocker(Motor On/Off)	1
20	87711-241-1	Switch-Rocker(Timer On/Off)	1
21	7112002	Contactora 25Amp. 3 Pole	2
22	7152036	Relay	1
23	7152025	Terminal Block	1
24	475458-1	Thermostat-Solid State.	1

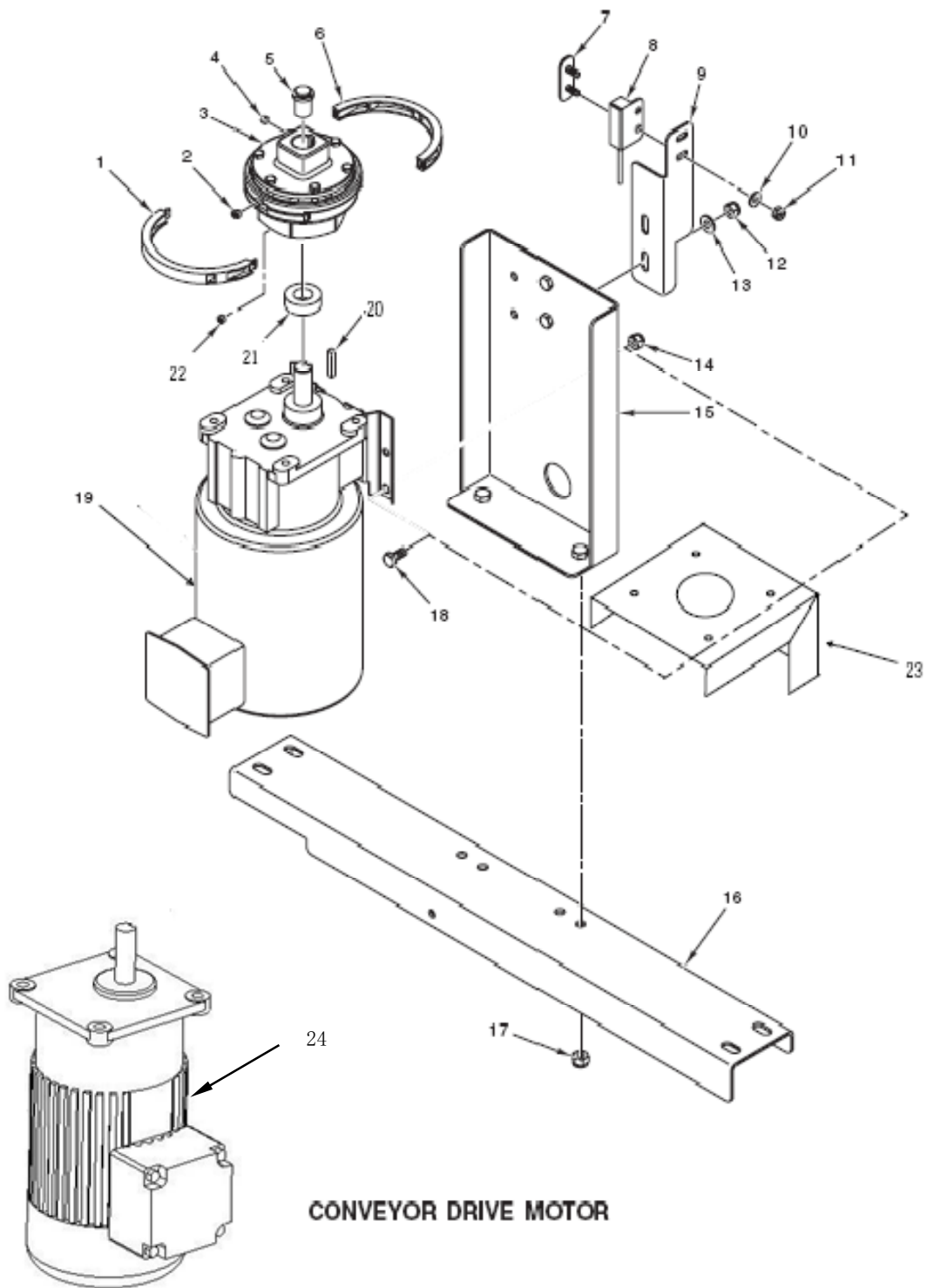
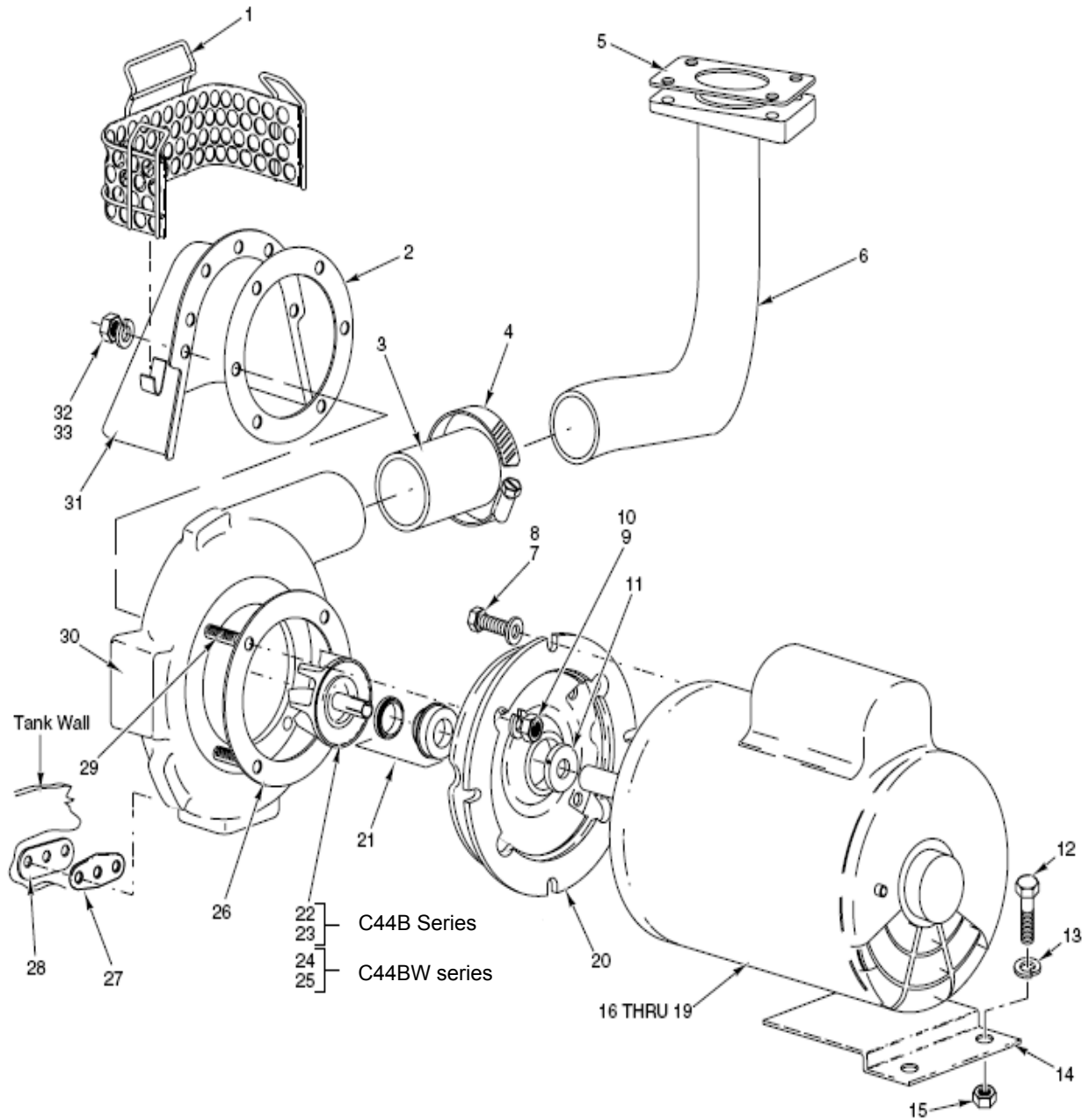


Fig. 18 CONVEYOR DRIVE MOTOR

**C44BBSERIES DISHWASHER REPLACEMENT PARTS****CONVEYOR DRIVE MOTOR**

<b>NO.</b>	<b>PART NO.</b>	<b>NAME OF PART</b>	<b>AMT</b>
1	892024-00001	Ring-Magnet Assy.(Male)	1
2	SC-075-10	Set Screw 1/4-20x <sup>3</sup> /16	2
3	749500	Clutch-Detent Assy	1
4	SC-075-10	Set Screw 1/4-20x <sup>3</sup> /16	2
5	749999	Plug-Clutch Keyway	1
6	892024-00002	Ring-Magnet Assy.(FeMale)	1
7	7152023	Plate-Sensor Mounting...	1
8	892533	Sensor-Latching Hall	1
9	7152028	Bracket-Sensor	1
10	WS-019-20	Washer	2
11	NS-031-15	Stop Nut 10-24 Hex	2
12	NS-047-82	Stop Nut 1/4-20 Hex	2
13	WS-017-06	Washer	2
14	NS-047-82	Stop Nut 1/4-20 Hex	4
15	7152022	Support-Motor Mounting	1
16	7152029	Support-Motor	1
17	NS-036-19	Stop Nut <sup>5</sup> /19-18 Hex	2
18	SC-041-01	Cap Screw 1/4-20x <sup>3</sup> /4 Hex Hd.	4
19	437044-1	Motor-Conveyor Drive ( 200-230/460V,60Hz,3PH)	1
	437044-4	Motor-Conveyor Drive ( 220/380V,50Hz,3PH) ...	1
20	274231-00057	Key <sup>3</sup> /16x <sup>3</sup> /16x1 <sup>1</sup> /4	1
21	749829	Bushing-Thrust	1
22	SC-075-10	Set Screw 1/4-20x <sup>3</sup> /16	2
23	7152027	Support-Motor Mounting	1
24	437044-1	Motor-Conveyor Drive(Native)(200-230/460V,60Hz,3PH)	1
	437044-4	Motor-Conveyor Drive(Native)(C220/380V,50Hz,3PH)	1

**C44BBSERIES DISHWASHER REPLACEMENT PARTS**



**Fig. 19 WASH MOTOR AND PUMP UNIT**

**C44BBSERIES DISHWASHER REPLACEMENT PARTS**

**WASH MOTOR AND PUMP UNIT**

<b>NO.</b>	<b>PART NO.</b>	<b>NAME OF PART</b>	<b>AMT</b>
1	328362	Strainer-Pump	1
2	119050	Gasket	1
3	328215	Hose-Discharge	1
4	542337	Clamp-Hose	2
5	270968	Gasket- Washer Pipe	1
6	742304	Tube Discharge	1
7	SC-041-29	Cap Screw 3/8-16x7/8 Hex Hd	4
8	WS-006-44	Washer	4
9	WL-006-22	LockWasher 5/16 Light	4
10	NS-015-11	Nut 5/16-18 Hex	4
11	274227-2	Clamp	1
12	SC-041-05	Cap Screw 1/4-16x5/8 Hex Hd	2
13	WL-007-15	LockWasher 1/4	2
14	742218	Bracket Motor Support	1
15	NS-015-01	Nut 1/4-20 Hex	2
16	274230-1C	Motor (1Ph,60Hz)(2HP)	1
17	274230-2C	Motor (3Ph,60Hz)(2HP)	1
18	274230-3C	Motor (1Ph,50Hz)(2HP)	1
19	274230-4C	Motor (3Ph,50Hz)(2HP)	1
20	274227-3	Adapter	1
21	274227-6	Seal-Shaft	1
22	274227-7	Impeller&Sleeve(60Hz)	1
23	274227-10	Impeller&Sleeve(50Hz)	1
24	274227-12	Impeller&Sleeve(60Hz)	1
25	274227-7	Impeller&Sleeve(50Hz)	1
26	274227-4	Gasket	1
27	119051	Gasket.	2
28	812776	Panel	2
29	274227-5	Stud	AR
30	274227-1	Pump Shell	1
31	742303	Shroud	1
32	WL-006-23	LockWasher 5/16 Medium	10
33	NS-015-11	Nut 5/16-18 Hex	10
	270950-1	Pump(1ph,60hz)(2HP)(incls.items 7 thru 11,16,20,21,22,26&29)	1
	270950-2	Pump(3ph,60hz)(2HP)(incls.items 7 thru 11,17,20,21,22,26,28&29)	1
	270950-3	Pump(1ph,50hz)(2HP)(incls.items 7 thru 11,18,20,21,22,26,28&29)	1
	270950-4	Pump(3ph,50hz)(2HP)(incls.items 7 thru 11,19,20,21,22,26,28&29)	1
	270950-21	Pump(1ph,60hz)(2HP)(incls.items 7 thru 11,16,20,21,22,26,28&29)	1
	270950-22	Pump(3ph,60hz)(2HP)(incls.items 7 thru 11,17,20,21,22,26,28&29)	1
	270950-23	Pump(1ph,50hz)(2HP)(incls.items 7 thru 11,18,20,21,22,26,28&29)	1
	2709502-4	Pump(3ph,50hz)(2HP)(incls.items 7 thru 11,19,20,21,22,26,28&29)	1