



CATALOG OF REPLACEMENT PARTS

MODELS 6614 & 6801 MEAT SAWS

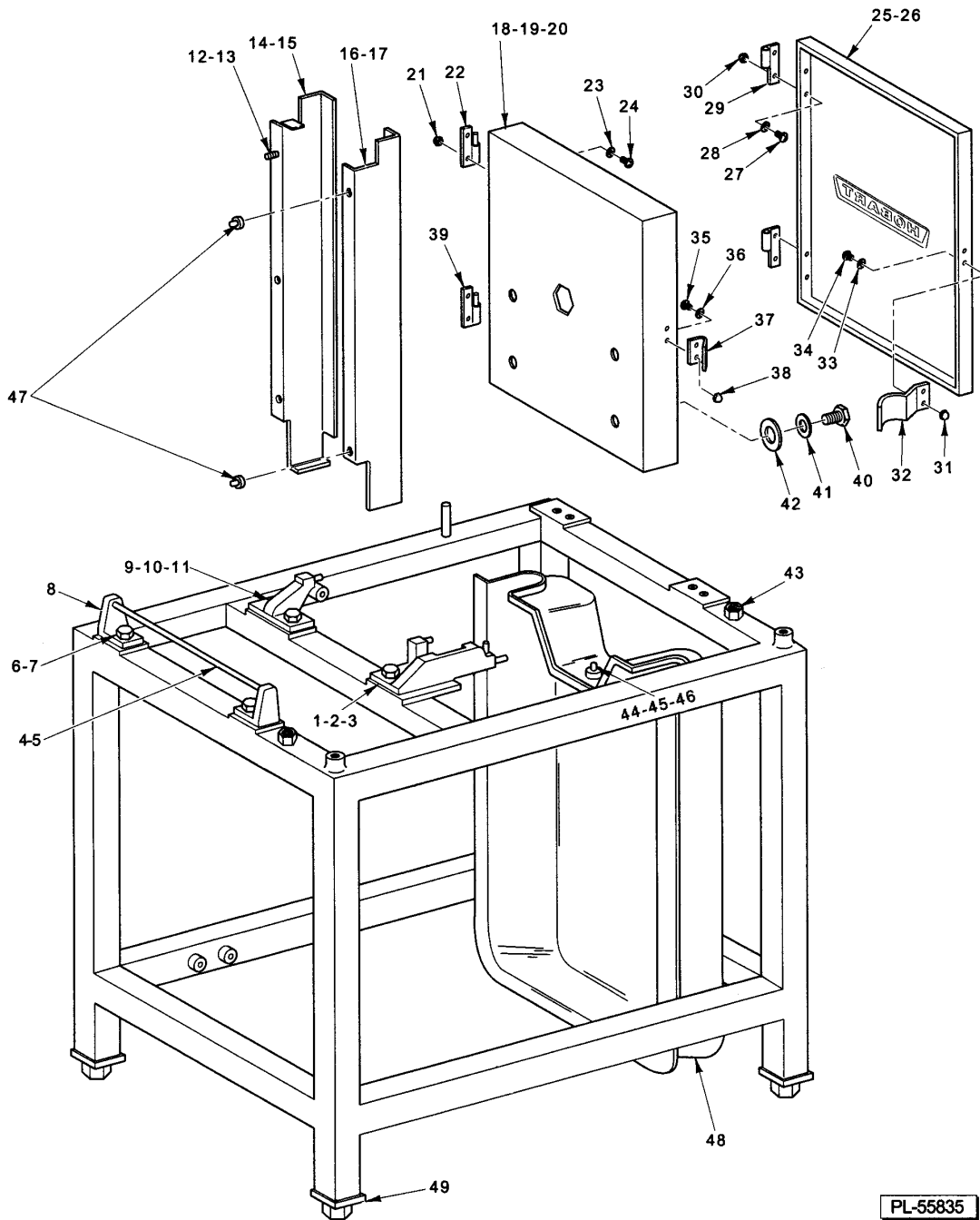


ML-134094
ML-134096

6801
6614

Table of Contents

5	FRAME AND COVER
7	DRIVE AND TENSION ADJUSTMENT UNIT(MODEL 6614 ML-134096)
9	DRIVE AND TENSION ADJUSTMENT UNIT(MODEL 6801 ML-134094)
11	LOWER PULLEY UNIT
13	UPPER BEARING CARRIER UNIT
15	TABLES AND CARRIAGE UNIT
17	UPPER GUIDE UNIT
19	LOWER WIPER UNIT
21	ELECTRICAL UNIT
23	GAUGE PLATE UNIT

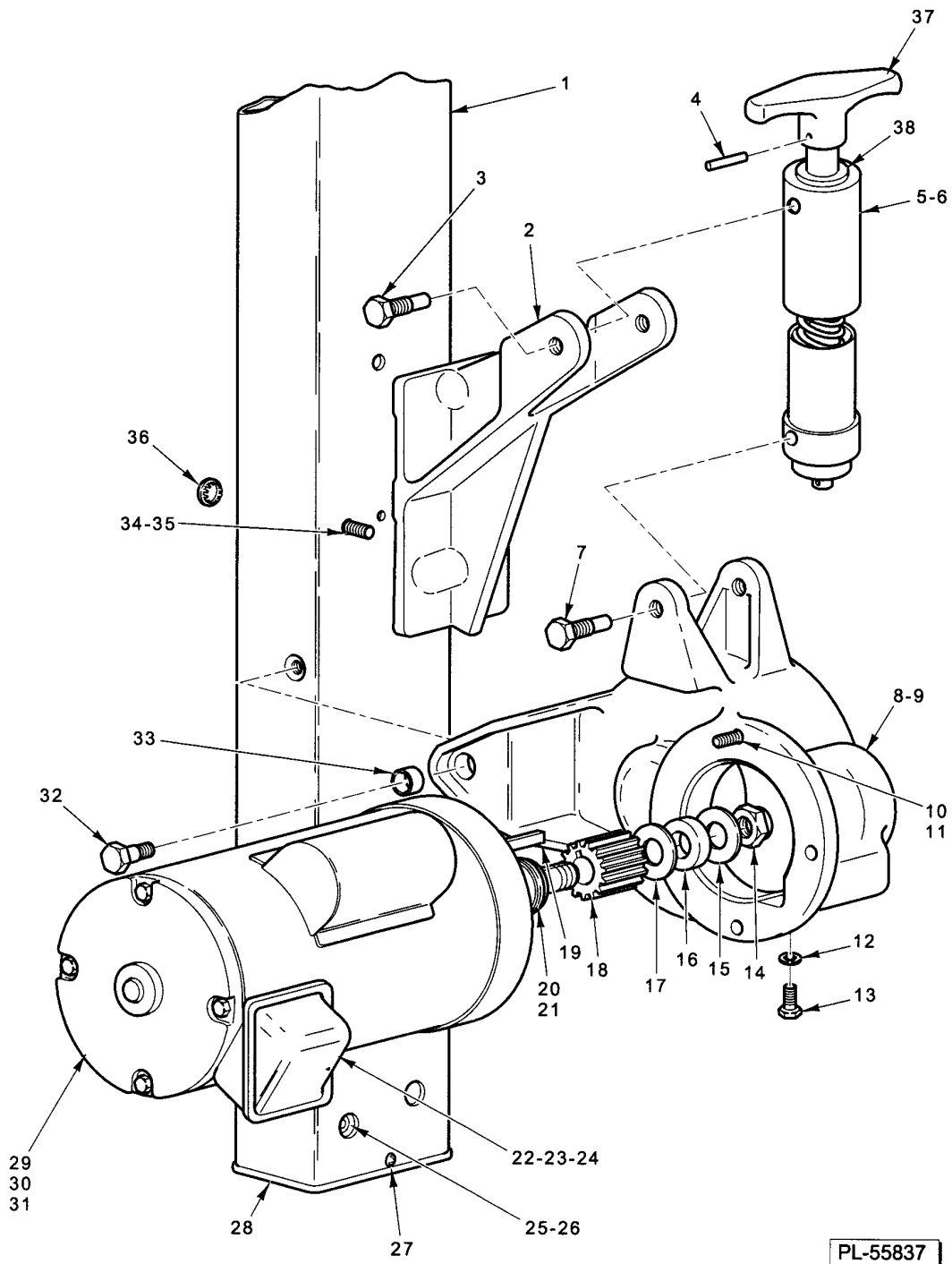


FRAME AND COVER

FRAME AND COVER

FRAME AND COVER

ILLUS. PL-55835	PART NO.	NAME OF PART	AMT.
1	00-291653	Lower Guide Support & Pin Assy.....	1
2	SC-041-31	Cap Screw 3/8-16 x 1-1/4 Hex Hd. (SST).....	2
3	WS-018-40	Washer (SST).....	2
4	00-290758-00001	Rod - Anchor (Left Table) (Model 6801 ML-134094).....	1
5	00-290758-00003	Rod - Anchor (Left Table) (Model 6614 ML-134096).....	1
6	SC-041-31	Cap Screw 3/8-16 x 1-1/4 Hex Hd. (SST).....	2
7	WS-018-40	Washer (SST).....	2
8	00-290751	Support - Left Table.....	2
9	00-290752	Table Lock & Pin Assy.....	1
10	SC-041-31	Cap Screw 3/8-16 x 1-1/4 Hex Hd. (SST).....	2
11	WS-018-40	Washer (SST).....	2
12	SC-093-07	Mach. Screw 10-32 x 1/2 Slotted Pan Hd. (SST).....	3
13	WL-006-07	Lockwasher #10 Helical (SST).....	3
14	00-875255	Guard - Column (Model 6801 ML-134094).....	1
15	00-875087	Guard - Column (Model 6614 ML-134096).....	1
16	00-875256	Guard - Removable (Model 6801 ML-134094).....	1
17	00-875088	Guard - Removable (Model 6614 ML-134096).....	1
18	00-873735	Upper Baffle Assy. (Incls. Items 20 thru 23 & 34 thru 38) (Model 6801 ML-134094)	1
19	00-875112	Upper Baffle Assy. (Incls. Items 20 thru 23 & 34 thru 38) (Model 6614 ML-134096)	1
20	00-873205	Baffle - Upper Pulley (SST) (Model 6801 ML-134094).....	1
21	NS-046-33	Acorn Nut 6-32 Hex.....	4
22	00-437788	Hinge - Upper Assy.....	1
23	WS-028-03	Washer.....	4
24	SC-115-26	Mach. Screw 6-32 x 1/4 Slotted Pan Hd. (SST).....	4
25	00-479153	Upper Cover Assy. (Incls. Items 26 thru 33) (Model 6801 ML-134094).....	1
26	00-875111	Upper Cover Assy. (Incls. Items 26 thru 33) (Model 6614 ML-134096).....	1
27	SC-115-26	Mach. Screw 6-32 x 1/4 Slotted Pan Hd. (SST).....	4
28	WS-028-03	Washer.....	4
29	00-437378-00002	Hinge - Lift Off (W/O Pin).....	2
30	NS-046-33	Acorn Nut 6-32 Hex.....	4
31	NS-046-33	Acorn Nut 6-32 Hex.....	2
32	00-291502	Clip - Latch.....	1
33	WS-028-03	Washer.....	2
34	SC-021-07	Mach. Screw 6-32 x 1/4 Slotted Rd. Hd. (SST).....	2
35	SC-021-07	Mach. Screw 6-32 x 1/4 Slotted Rd. Hd. (SST).....	2
36	WS-028-03	Washer.....	2
37	00-437608	Clip - Retainer.....	1
38	NS-046-33	Acorn Nut 6-32 Hex.....	2
39	00-437787	Hinge - Lower Assy.....	1
40	SC-041-50	Cap Screw 1/4-20 x 1/2 Hex Hd. (SST).....	4
41	WS-003-47	Washer (SST).....	4
42	00-291763-00002	Washer - Rubber (Model 6801 ML-134094).....	4
43	00-875054	Screw - Jack (Model 6614 ML-134096).....	2
44	00-290860	Anchor - Lower Cover.....	1
45	SC-041-05	Cap Screw 1/4-20 x 5/8 Hex Hd.....	1
46	WS-003-47	Washer (SST).....	1
47	00-436908	Pin - Anchor.....	2
48	00-875184	Cover - Lower (Incls. Items 42, 43, & 44) (Model 6801 ML-134094).....	1
49	00-435792	Foot (2 to 4 In. Adjustable Height).....	4

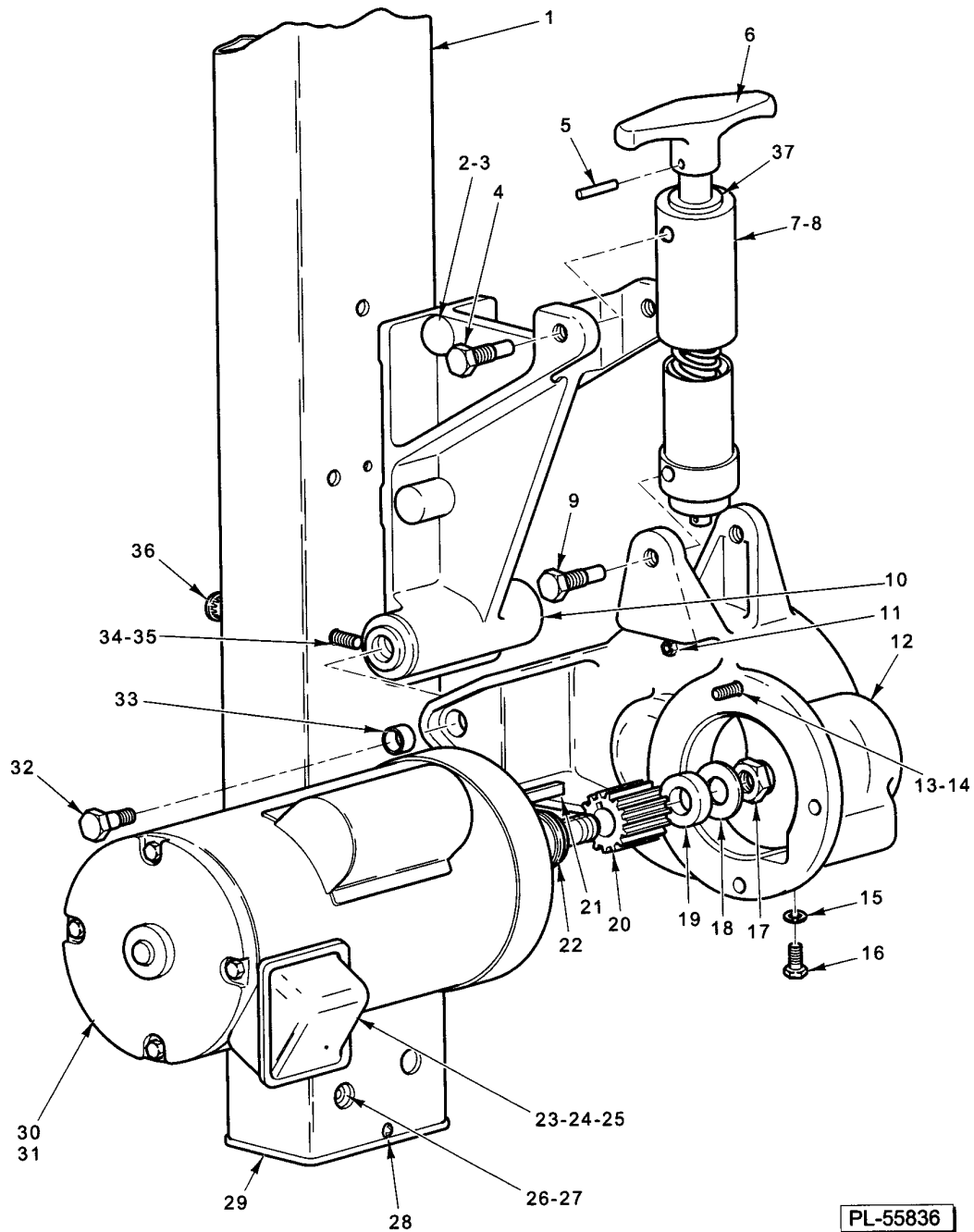


**DRIVE AND TENSION ADJUSTMENT UNIT
(MODEL 6614 ML-134096)**

DRIVE AND TENSION ADJUSTMENT UNIT(MODEL 6614 ML-134096)

DRIVE AND TENSION ADJUSTMENT UNIT(MODEL 6614 ML-134096)

ILLUS. PL-55837	PART NO.	NAME OF PART	AMT.
1	00-875134-00001	Column & Label Assy.....	1
2	00-875047-00002	Transmission Support Assy.....	1
3	00-290832	Pivot - Tension Adjusting.....	2
4	RP-002-07	Roll Pin 3/16 x 1 1/4 Lg. (SST).....	1
5	00-873500	Tensioner Assy. (Incls. Items 4, 6, 37, & 38).....	1
6	BN-005-06	Needle Bearing - Torrington NTA-1018.....	1
7	00-290832	Pivot - Tension Adjusting.....	2
8	00-120971	Plug - Vent.....	1
9	00-875137	Gear Case Assy. (Incls. Items 8 & 33).....	1
10	SC-041-31	Cap Screw 3/8-16 x 1-1/4 Hex Hd. (SST).....	3
11	WL-019-85	Lockwasher.....	3
12	WS-021-20	Washer.....	1
13	SC-036-93	Cap Screw 7/16-20 x 3/4 Hex Hd.....	1
14	NS-046-29	Lock Nut 3/4-16 Flexlox.....	1
15	SL-005-02	Spring - Loading.....	1
16	00-290866	Washer - Damper.....	1
17	SL-005-02	Spring - Loading.....	1
18	00-875043	Pinion - Drive.....	1
19	00-109070-00008	Key.....	1
20	SL-005-02	Spring - Loading.....	2
21	00-290866	Washer - Damper.....	1
22	SC-027-29	Mach. Screw 8-32 x 3/8 Slotted Rd. Hd. (Brass).....	AR
23	WL-010-01	Lockwasher #8 External Shakeproof.....	AR
24	NS-010-11	Nut 8-32 Hex (Brass).....	AR
25	SC-040-21	Cap Screw 3/8-16 x 7/8 Hex Socket Hd.....	4
26	WL-006-28	Lockwasher 3/8 Helical.....	4
27	SD-038-03	Self-Tapping Screw 10-16 x 3/4 Truss Hd.....	4
28	00-479134	End Cap.....	1
29	00-437301-00001	Motor (60 Hz.) (3 Ph.).....	1
30	00-437301-00003	Motor (50 Hz.) (3 Ph.).....	1
31	00-479005	Motor (1 Ph.).....	1
32	00-873986	Screw Shoulder.....	2
33	00-291859-00002	Bushing 3/8 Lg.....	2
34	SC-040-21	Cap Screw 3/8-16 x 7/8 Hex Socket Hd.....	5
35	WS-018-04	Washer (SST).....	5
36	PB-005-15	Plug Button.....	11
37	00-875670	Knob - Tension Adjust.....	1
38	BB-021-45	Bearing - Thrust 0.6371.....	1
	00-875114-00001	Motor & Pinion Assy. (60 Hz.) (3 Ph.) (Incls. Items 14 thru 21 & 29).....	1
	00-875114-00003	Motor & Pinion Assy. (60 Hz.) (1 Ph.) (Incls. Items 14 thru 21 & 31).....	1

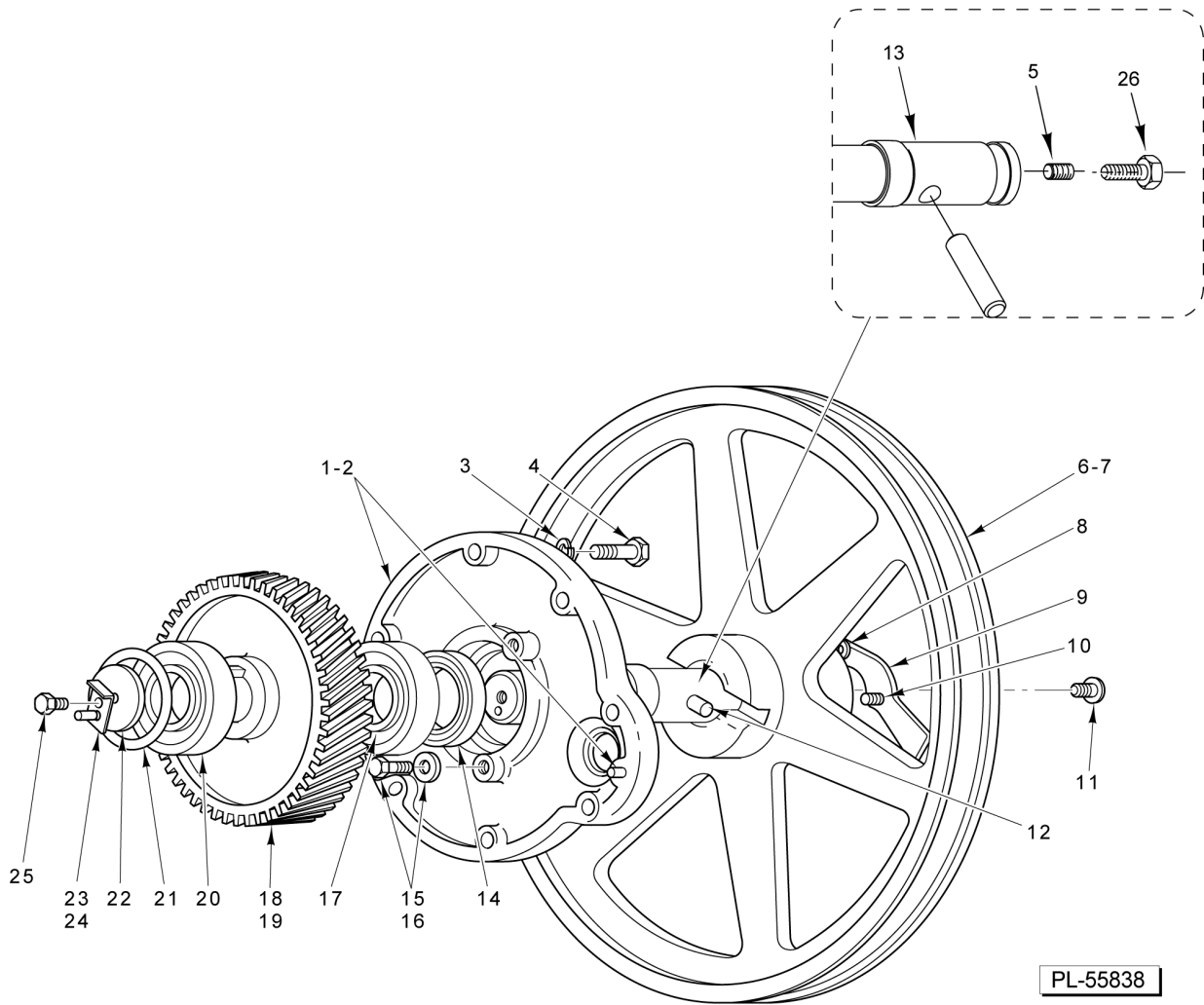


**DRIVE AND TENSION ADJUSTMENT UNIT
(MODEL 6801 ML-134094)**

DRIVE AND TENSION ADJUSTMENT UNIT(MODEL 6801 ML-134094)

DRIVE AND TENSION ADJUSTMENT UNIT(MODEL 6801 ML-134094)

ILLUS.	PART NO.	NAME OF PART	AMT.
PL-55836			
1	00-873696-00001	Column & Label Assy.....	1
2	00-292286-00002	Transmission Support Assy. (Incls. Item 3).....	1
3	00-011800-00118	Dowel.....	1
4	00-290832	Pivot - Tension Adjusting.....	2
5	RP-002-07	Roll Pin 3/16 x 1 1/4 Lg. (SST).....	1
6	00-875670	Knob - Tension Adjust.....	1
7	00-873500	Tensioner Assy. (Incls. Items 5, 6, 8, & 37).....	1
8	BN-005-06	Needle Bearing - Torrington NTA-1018.....	1
9	00-290832	Pivot - Tension Adjusting.....	2
10	00-291859-00001	Bushing 1/2 Lg.....	1
11	00-120971	Plug - Vent.....	1
12	00-875137	Gear Case Assy.....	1
13	SC-041-31	Cap Screw 3/8-16 x 1-1/4 Hex Hd. (SST).....	3
14	WL-019-85	Lockwasher.....	3
15	WS-021-20	Washer.....	1
16	SC-036-93	Cap Screw 7/16-20 x 3/4 Hex Hd.....	1
17	NS-046-29	Lock Nut 3/4-16 Flexlox.....	1
18	SL-005-02	Spring - Loading.....	1
19	00-290866	Washer - Damper.....	1
20	00-875043	Pinion - Drive (16T).....	1
21	00-109070-00008	Key.....	1
22	SL-005-02	Spring - Loading.....	6
23	SC-027-29	Mach. Screw 8-32 x 3/8 Slotted Rd. Hd. (Brass).....	AR
24	WL-010-01	Lockwasher #8 External Shakeproof.....	AR
25	NS-010-11	Nut 8-32 Hex (Brass).....	AR
26	SC-040-21	Cap Screw 3/8-16 x 7/8 Hex Socket Hd.....	4
27	WL-006-28	Lockwasher 3/8 Helical.....	4
28	SD-038-03	Self-Tapping Screw 10-16 x 3/4 Truss Hd.....	2
29	00-479134	End Cap.....	1
30	00-437301-00001	Motor (60 Hz.) (3 Ph.).....	1
31	00-479005	Motor (1 Ph.).....	1
32	00-873986	Screw Shoulder.....	1
33	00-291859-00002	Bushing 1/2 Lg.....	2
34	SC-040-21	Cap Screw 3/8-16 x 7/8 Hex Socket Hd.....	5
35	WS-018-04	Washer (SST).....	5
36	PB-005-15	Plug Button.....	13
37	BB-021-45	Bearing - Thrust 0.6371.....	1

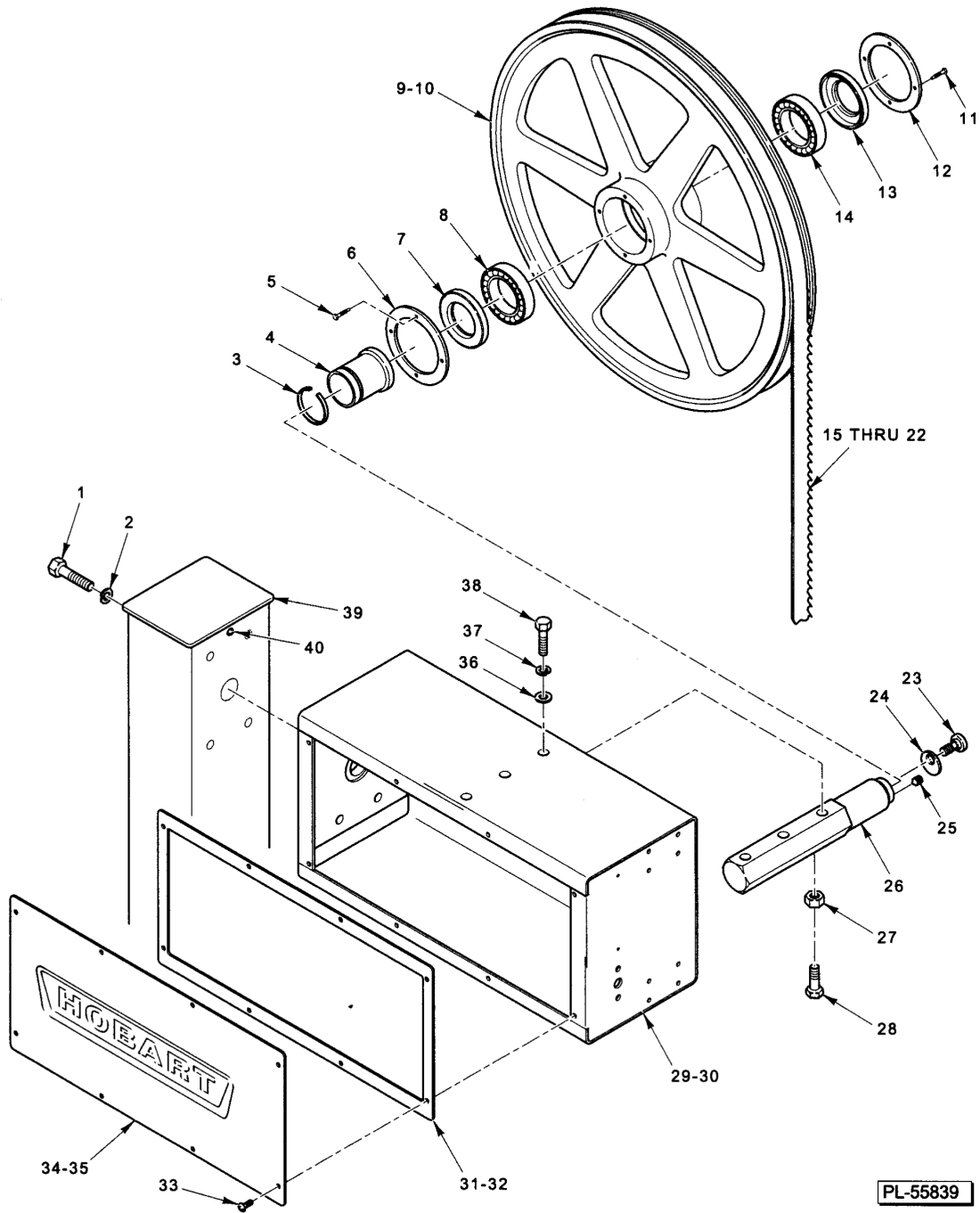


PL-55838

LOWER PULLEY UNIT

LOWER PULLEY UNIT

ILLUS. PL-55838	PART NO.	NAME OF PART	AMT.
1	00-290817-00002	Gear Case Cover Assy. (Incls. Item 2).....	1
2	00-011800-00091	Dowel.....	2
3	WL-006-22	Lockwasher 5/16 Light.....	7
4	SC-041-15	Cap Screw 5/16-18 x 1 1/4 Hex Hd.....	7
5	SC-119-20	Set Screw 1/4-20 x 1/2 Soc. Hdls., Flat Pt.....	1
6	ML-134098-0000Z	Pulley and Latch Assy. (Incls. Items 8, 9, & 10) (Model 6614 ML-134096).....	1
7	ML-109653-0000Z	Pulley and Latch Assy. (Incls. Items 8, 9, & 10) (Model 6801 ML-134094).....	1
8	00-079686	Catch - Friction.....	1
9	00-875150	Latch.....	1
10	00-020851	Screw - Latch.....	1
11	SD-005-49	Self-Tapping Screw 12 x 1/2 Rd. Hd., Type U.....	1
12	00-436447	Drive Pin.....	1
13	00-968027	Shaft - Lower.....	1
14	00-290805	Seal - Shaft.....	1
15	SC-062-59	Cap Screw 5/16-18 x 5/8 Hex Hd.....	3
16	WS-018-19	Washer.....	3
17	BB-007-21	Ball Bearing.....	1
18	00-875044-00002	Gear - Drive (56T).....	1
19	00-109070-00009	Key.....	1
20	BB-007-21	Ball Bearing.....	1
21	SL-003-11	Spring - Loading ND 72.....	2
22	00-291973-00002	Retainer - Shaft.....	1
23	00-291624	Retainer - Lock.....	1
24	RP-003-18	Roll Pin 1/8 x 7/8 Lg.....	1
25	SC-041-13	Cap Screw 5/16-18 x 2.....	1
26	SC-041-30	Cap Screw 3/8-16 x 1 Hex Hd. (SST).....	1



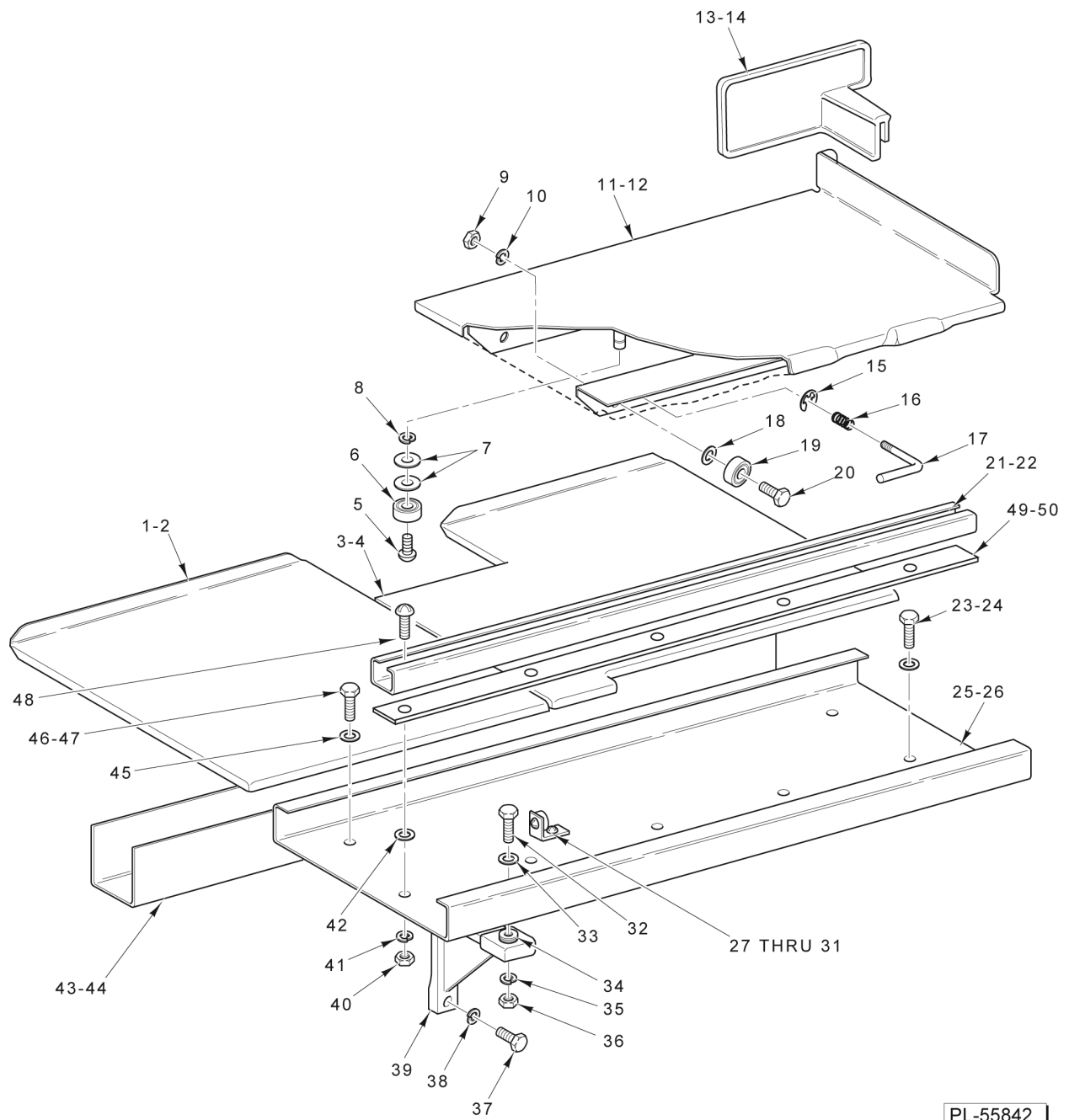
UPPER BEARING CARRIER UNIT

UPPER BEARING CARRIER UNIT

UPPER BEARING CARRIER UNIT

ILLUS.	PART NO.	NAME OF PART	AMT.
PL-55839			
1	SC-040-21	Cap Screw 3/8-16 x 7/8 Hex Socket Hd.....	4
2	WL-006-28	Lockwasher 3/8 Helical.....	4
3	RR-004-13	Retaining Ring (Truarc).....	1
4	00-479143	Bushing - Pulley.....	1
5	SC-067-06	Mach. Screw 10-24 x 1/2 Hex Hd.....	4
6	00-873461-00002	Cover - Rear Pulley.....	1
7	00-873501	Seal - Shaft.....	1
8	BB-015-36	Ball Bearing - NSK 6007 DDUCE1SRIS.....	1
9	ML-134048-0000Z	Pulley Assy. - Upper (Incls. Items 3 thru 8, & 11 thru 14) (Model 6614 ML-134096)	1
10	ML-104999-0000Z	Pulley Assy. - Upper (Incls. Items 3 thru 8, & 11 thru 14) (Model 6801 ML-134094)	1
11	SC-067-06	Mach. Screw 10-24 x 1/2 Hex Hd.....	4
12	00-873461-00001	Cover - Front Pulley.....	1
13	00-873502	Seal - Shaft.....	1
14	BB-015-36	Ball Bearing - NSK 6007 DDUCE1SRIS.....	1
15	00-477011-00126	Blade - Saw (5/8 In. Wd. x 0.022 Thk.) (3T) (Model 6614 ML-134096).....	1
16	00-477016-00126	Blade - Saw (5/8 In. Wd. x 0.022 Thk.) (4T) (Model 6614 ML-134096).....	1
17	00-477086-00126	Blade - Saw (5/8 In. Wd. x 0.025 Thk.) (Scalloped) (Model 6614 ML-134096).....	1
18	00-477011-00142	Blade - Saw (5/8 In. Wd. x 0.022 Thk.) (3T) (Model 6801 ML-134094).....	1
19	00-477016-00142	Blade - Saw (5/8 In. Wd. x 0.022 Thk.) (4T) (Model 6801 ML-134094).....	1
20	00-477086-00142	Blade - Saw (5/8 In. Wd. x 0.025 Thk.) (Scalloped) (Model 6801 ML-134094).....	1
21	00-290868-00001	Blade - Saw (5/8 In. Wd. x 0.022 Thk.) (4T) (Model 6801 ML-134094).....	1
22	00-875188-00001	Blade - Saw (5/8 In. Wd. x 0.022 Thk.) (4T) (Model 6614 ML-134096).....	1
23	00-020851	Screw - Latch.....	1
24	00-479142	Retainer - Pulley.....	1
25	00-079686	Catch - Friction.....	1
26	00-479144	Shaft - Upper.....	1
27	NS-018-14	Jam Nut 3/8-16 Hex.....	2
28	SC-127-03	Cap Screw - 3/8-16 x 1 3/4 Hex Hd.....	2
29	00-875072	Box Column Assy. (Model 6614 ML-134096).....	1
30	00-875227	Box Column Assy. (60 Hz.) (Model 6801 ML-134094).....	1
31	00-875080	Gasket - Column Box (Model 6614 ML-134096).....	1
32	00-873820	Gasket - Column Box (Model 6801 ML-134094).....	1
33	SC-025-33	Mach. Screw 8-32 x 1/2 Bndg. Hd.....	8
*34	00-875077	Cover - Column Box (Model 6614 ML-134096).....	1
**	00-968040	Cover - Column Box (Model 6614).....	1
*35	00-479672	Cover - Column Box (60 Hz.) (Model 6801 ML-134094).....	1
**	00-968041	Cover - Column Box (Model 6801).....	1
36	WS-018-40	Washer (Model 6614 ML-134096).....	3
37	WL-006-27	Lockwasher 3/8 Helical (SST).....	3
38	SC-041-31	Cap Screw 3/8-16 x 1-1/4 Hex Hd. (SST).....	3
39	00-479134	End Cap.....	1
40	SD-038-03	Self-Tapping Screw 10-16 x 3/4 Truss Hd.....	2

* Before Manufacturer Date 10/18/13
 ** After Manufacturer Date 10/18/13

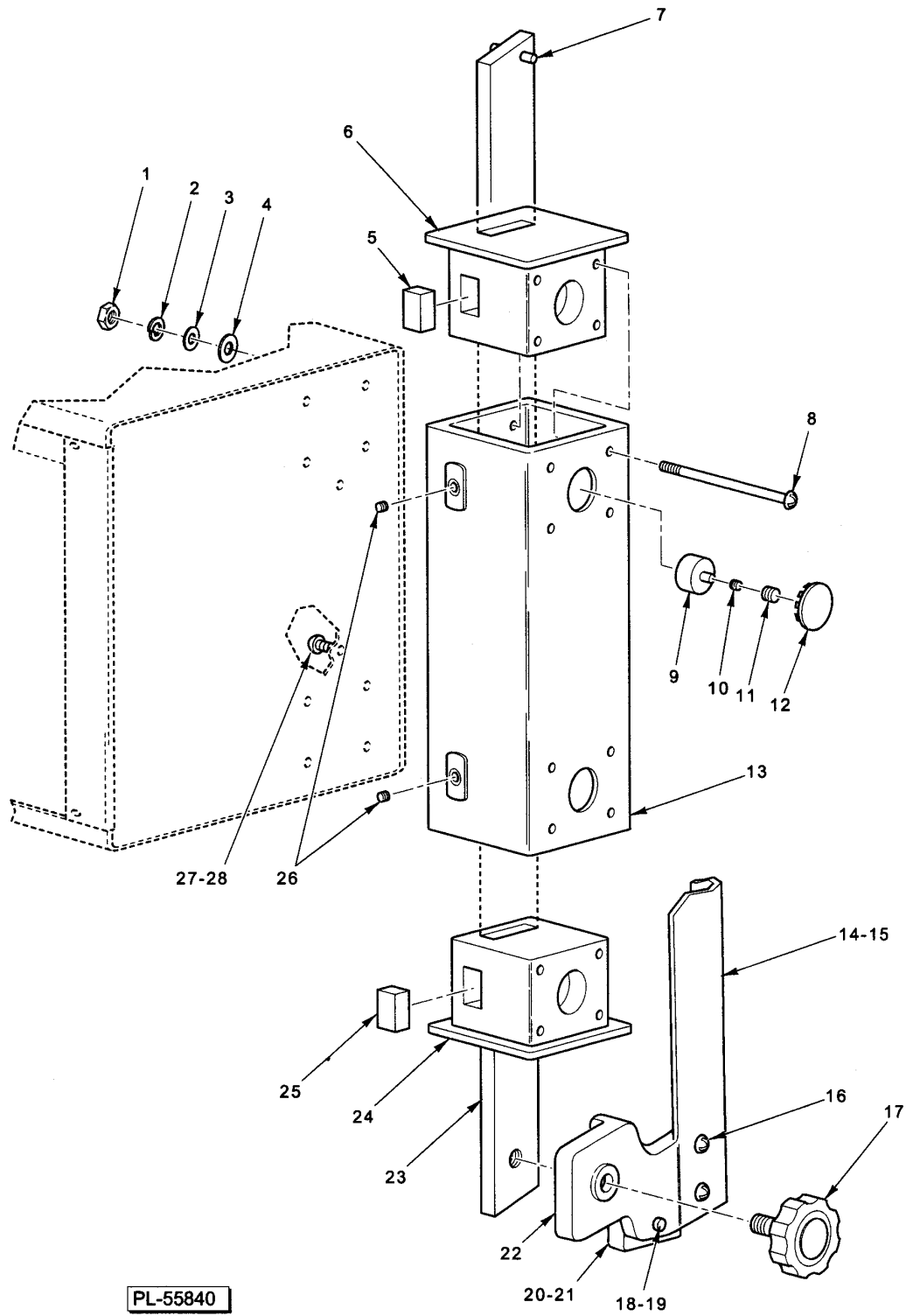


PL-55842

TABLES AND CARRIAGE UNIT

TABLES AND CARRIAGE UNIT

ILLUS.	PART NO.	NAME OF PART	AMT.
PL-55842			
1	00-290771	Table - Left Assy. (Model 6801 ML-134094).....	1
2	00-875066	Table - Left Assy. (Model 6614 ML-134096).....	1
3	00-291654	Table - Right Assy. (Model 6801 ML-134094).....	1
4	00-875068	Table - Right Assy. (Model 6614 ML-134096).....	1
5	SC-041-30	Cap Screw 3/8-16 x 1 Hex Hd. (SST).....	2
6	BB-008-11	Ball Bearing - Nice #SK-T 4725.....	2
7	WS-018-30	Washer.....	4
8	WL-006-28	Lockwasher 3/8 Helical.....	2
9	NS-046-09	Stop Nut 3/8-16 Elastic.....	4
10	WL-006-27	Lockwasher 3/8 Helical (SST).....	4
11	00-437469	Carriage Assy. (Incls. Items 5 thru 10 & 14 thru 19) (Model 6801 ML-134094).....	1
12	00-875136	Carriage Assy. (Incls. Items 5 thru 10 & 14 thru 19) (Model 6614 ML-134096).....	1
13	00-291435	Pusher Plate (Gray).....	1
14	00-291435-00002	Pusher Plate (Yellow).....	1
15	RR-011-09	Retaining Ring.....	1
16	00-290787	Spring - Carriage Lock.....	1
17	00-290795	Lever - Carriage Lock.....	1
18	WS-018-34	Washer (Model 6801 ML-134094).....	4
19	BB-008-11	Ball Bearing - Nice #SK-T 4725.....	4
20	SC-041-30	Cap Screw 3/8-16 x 1 Hex Hd.....	4
21	00-437476	Guide - Roller (Model 6801 ML-134094).....	1
22	00-875089	Guide - Roller (Model 6614 ML-134096).....	1
23	SC-041-29	Cap Screw 3/8-16 x 7/8 Hex Hd. Wax Coated Threads (Model 6614 ML-134096).....	2
24	WS-018-40	Washer (Model 6614 ML-134096).....	2
25	00-873798	Support - Carriage (Model 6801 ML-134094).....	1
26	00-875091	Support - Carriage (Model 6614 ML-134096).....	1
27	00-479107	Stop - Carriage.....	2
28	SC-124-44	Bolt - Sq. Neck 5/16-18 x 3/4 Rd. Hd.....	2
29	NS-036-19	Stop Nut 5/16-18 Elastic.....	2
30	00-873789	Bumper - Carriage Stop.....	2
31	WL-006-23	Lockwasher 5/16 Helical (SST).....	2
32	SC-041-33	Cap Screw 3/8-16 x 1 3/4 Hex Hd. (SST) (Model 6801 ML-134094).....	2
33	WS-018-40	Washer (Model 6801 ML-134094).....	2
34	00-292284	Screw - Jack (Model 6801 ML-134094).....	2
35	WL-006-27	Lockwasher 3/8 Light (Model 6801 ML-134094).....	2
36	NS-018-14	Jam Nut 3/8-16 Hex (Model 6801 ML-134094).....	2
37	SC-041-31	Cap Screw 3/8-16 x 1 1/4 Hex Hd. (Model 6801 ML-134094).....	2
38	WL-006-27	Lockwasher 3/8 Light (Model 6801 ML-134094).....	2
39	00-291958-00002	Brace - Carriage Support (Model 6801 ML-134094).....	2
40	NS-015-11	Nut 5/16-18 Hex (SST).....	5
41	WL-006-23	Lockwasher 5/16 Helical (SST).....	5
42	WS-017-21	Washer.....	5
43	00-290790	Tray - Scrap (Model 6801 ML-134094).....	1
44	00-875065	Tray - Scrap (Model 6614 ML-134096).....	1
45	WS-018-40	Washer (SST).....	2
46	SC-041-29	Cap Screw 3/8-16 x 7/8 Hex Hd. Wax Coated Threads (Model 6801 ML-134094).....	2
47	SC-041-34	Cap Screw 3/8-16 x 2 Hex Hd. (Model 6614 ML-134096).....	2
48	SC-124-44	Bolt - Sq. Neck 5/16-18 x 3/4 Rd. Hd.....	5
49	00-946745	Gasket - Guide (Model 6614).....	1
50	00-946746	Gasket, Guide Bar.....	1

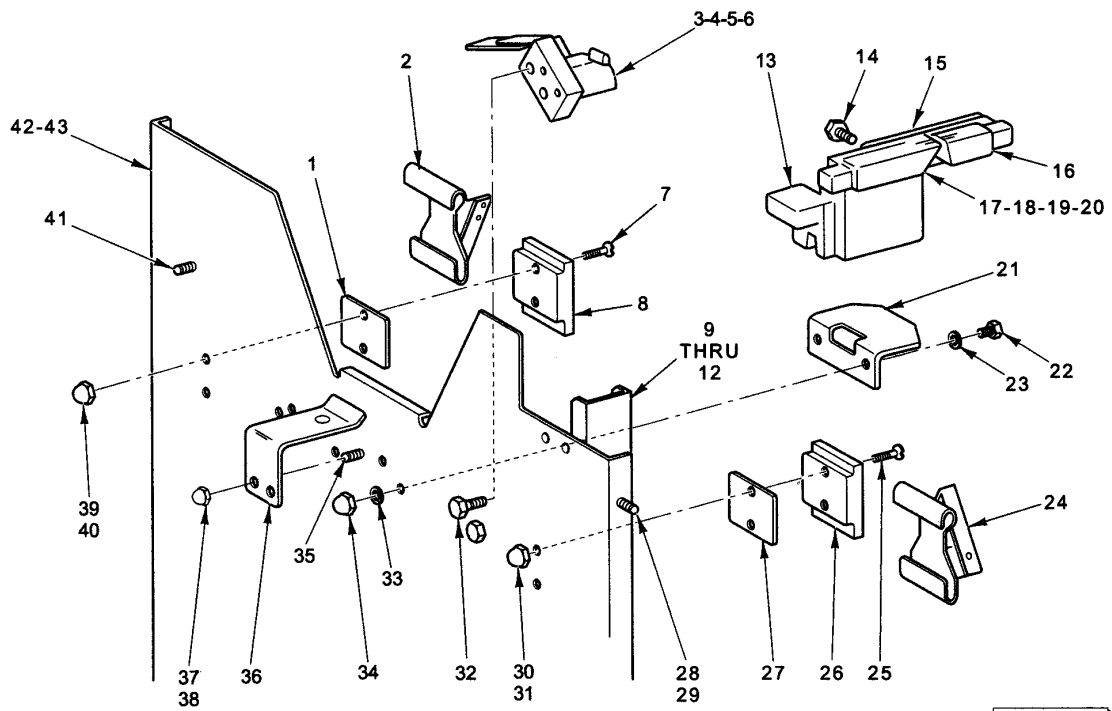


UPPER GUIDE UNIT

UPPER GUIDE UNIT

UPPER GUIDE UNIT

ILLUS.	PART NO.	NAME OF PART	AMT.
PL-55840			
1	NS-011-12	Nut 8-32 Hex.....	8
2	WL-014-05	Lockwasher #8 External Shakeproof (SST).....	8
3	WS-023-22	Washer (SST).....	8
4	WS-031-35	Washer.....	8
5	00-479766	Slide Lock.....	1
6	00-478999	Guide Bar Insert.....	1
7	PG-007-16	Groove Pin 3/16 Dia. x 3/4 Lg.....	1
8	SC-021-17	Mach. Screw 8-32 x 2 1/2 Slotted Rd. Hd. (SST).....	8
9	00-120141	Shoe - Slide Rod.....	2
10	00-873782	Spring - Slide Rod.....	2
11	SC-046-70	Set Screw 3/8-16 x 1/2 Slotted Hdls., Cup Pt.....	2
12	PB-005-09	Plug Button.....	2
13	00-478998	Support - Guide Bar.....	1
14	00-875056	Guard - Front Blade (Model 6614 ML-134096).....	1
15	00-291441	Guard - Front Blade (Model 6801 ML-134094).....	1
16	SC-053-05	Mach. Screw 10-24 x 3/8 Slotted Truss Hd. (SST).....	2
17	00-435958-00002	Knob - Adjusting.....	1
18	SC-041-02	Cap Screw 1/4-20 x 1 Hex Hd. (Lower Guide).....	1
19	00-291579	Washer - Guide.....	1
20	00-290844-00001	Guide - Saw Blade (0.022 Blade).....	1
21	00-290844-00002	Guide - Saw Blade (0.014 Blade).....	1
22	00-290842	Holder - Upper Guide.....	1
23	00-873204	Upper Guide Support Bar Assy (Incls. Item 7).....	1
24	00-478999	Guide Bar Insert.....	1
25	00-479766	Slide Lock.....	1
26	SC-055-01	Set Screw 10-24 x 1/4 Hex Hdls., Cup Pt. (SST).....	2
27	SC-025-33	Mach. Screw 8-32 x 1/2 Bndg. Hd.....	2
28	NS-011-12	Nut 8-32 Hex.....	2
	00-291442	Guide Assy. - Upper (Incls. Items 15, 16, & 22) (Model 6801 ML-134094).....	1
	00-875135	Guide Assy. - Upper (Incls. Items 14, 16, & 22) (Model 6614 ML-134096).....	1

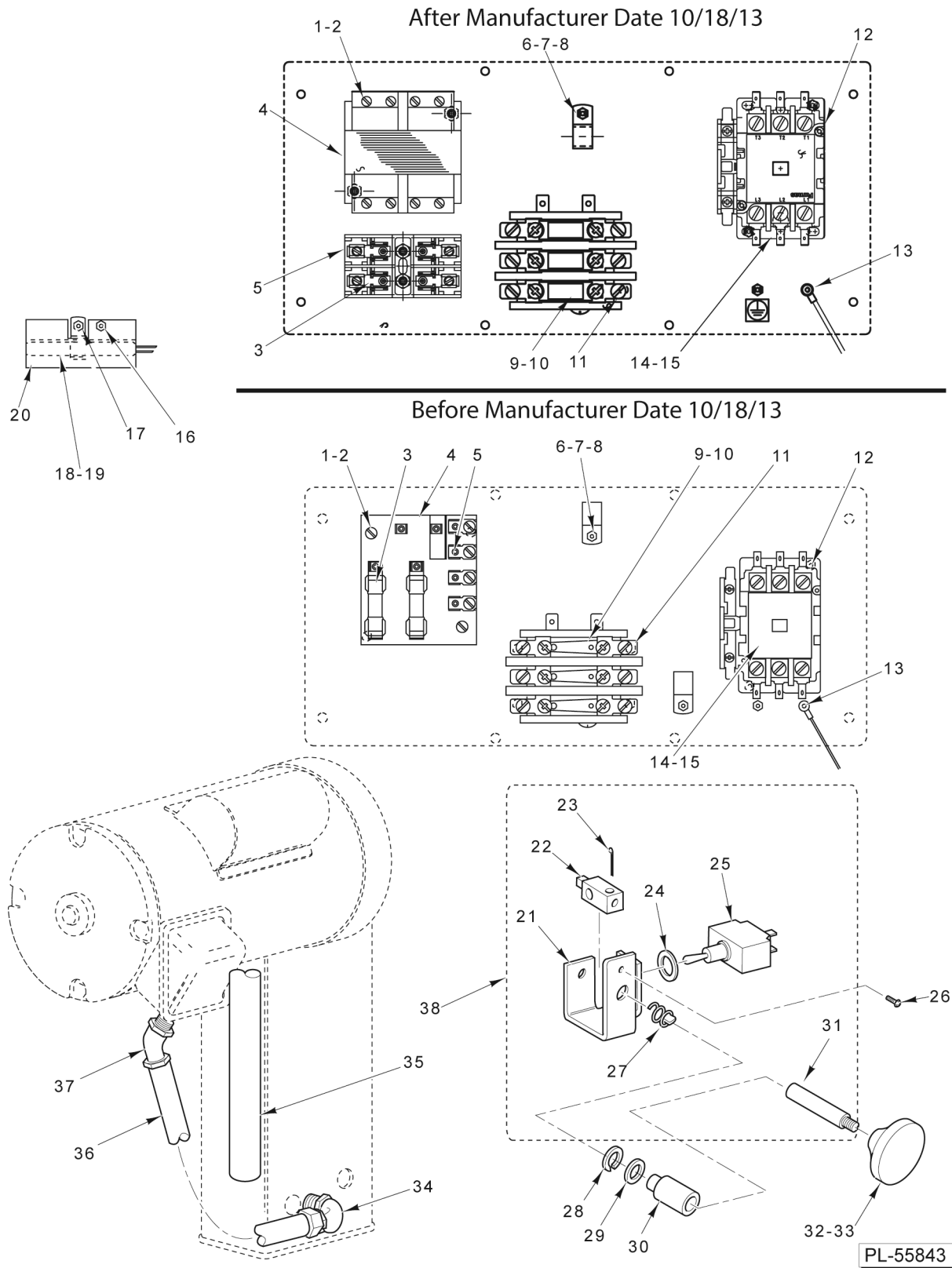


PL-55841

LOWER WIPER UNIT

LOWER WIPER UNIT

ILLUS.	PART NO.	NAME OF PART	AMT.
PL-55841			
1	00-290855	Shim - Wiper Support.....	AR
2	00-290798	Blade Wiper Assy.....	1
3	00-291831	Block - Pulley Wiper.....	1
4	00-102399	Pulley Wiper Assy. (Incls. Items 5 & 6).....	1
5	00-123886	Wiper - Pulley.....	1
6	SC-053-01	Mach. Screw 10-24 x 1/4 Slotted Truss Hd.....	2
7	SC-022-34	Mach. Screw 1/4-20 x 7/8 Slotted Flat Hd. (SST).....	2
8	00-290822	Support - Wiper.....	1
9	00-291809	Shield - Blade Guide.....	1
10	SC-041-86	Cap Screw 1/4-20 x 3/8 Hex Hd. (SST).....	2
11	WS-003-49	Washer 0.266 x 0.563 x 0.062 (SST).....	2
12	NS-025-04	Crown Nut 1/4-20 (SST).....	2
13	00-875234-00002	Holder - Lower Guide.....	1
14	SC-116-26	Cap Screw 1/4-28 x 7/8 Hex Hd.....	2
15	00-875235	Cover - Guide.....	1
16	00-291658	Guide - Plastic.....	1
17	00-291670-00001	Guide - Saw Blade (0.022 Blade).....	1
18	00-291670-00002	Guide - Saw Blade (0.014 Blade).....	1
19	00-291670-00003	Guide - Saw Blade (0.038 Blade).....	1
20	00-291670-00004	Guide - Saw Blade (0.020 Blade).....	1
21	00-875246	Support.....	1
22	SC-041-50	Cap Screw 1/4-20 x 1/2 Hex Hd. (SST).....	2
23	WS-003-49	Washer 0.266 x 0.563 x 0.062 (SST).....	AR
24	00-290798	Blade Wiper Assy.....	1
25	SC-022-34	Mach. Screw 1/4-20 x 7/8 Slotted Flat Hd. (SST).....	2
26	00-290822	Support - Wiper.....	1
27	00-290855	Shim - Wiper Support.....	AR
28	SC-041-50	Cap Screw 1/4-20 x 1/2 Hex Hd. (SST).....	2
29	WS-003-49	Washer 0.266 x 0.563 x 0.062 (SST).....	2
30	NS-025-04	Crown Nut 1/4-20 (SST).....	2
31	WS-003-49	Washer 0.266 x 0.563 x 0.062 (SST).....	2
32	SC-041-86	Cap Screw 1/4-20 x 3/8 Hex Hd. (SST).....	2
33	WL-006-17	Lockwasher 1/4 Medium (Model 6614 ML-134096).....	2
34	NS-025-04	Crown Nut 1/4-20 (SST).....	2
35	SC-025-07	Mach. Screw 10-24 x 5/16 Slotted Bndg. Hd. (SST).....	2
36	00-290788	Clip - Cover.....	1
37	NS-025-01	Nut - Crown 10-24.....	2
38	WL-006-06	Lockwasher #10 Helical (SST).....	2
39	NS-025-04	Crown Nut 1/4-20 (SST).....	2
40	WS-003-49	Washer 0.266 x 0.563 x 0.062 (SST).....	2
41	SC-041-50	Cap Screw 1/4-20 x 1/2 Hex Hd. (SST).....	2
42	00-875082	Baffle - Lower Pulley (Model 6614 ML-134096).....	2
43	00-290851-00002	Baffle - Lower Pulley (Model 6801 ML-134094).....	1
	00-291672-00001	Holder & Guide Assy. (Incls. Items 13 thru 17).....	1
	00-291672-00002	Holder & Guide Assy. (Incls. Items 13 thru 16 & 18).....	1
	00-291672-00003	Holder & Guide Assy. (Incls. Items 13 thru 16 & 19).....	1
	00-291672-00004	Holder & Guide Assy. (Incls. Items 13 thru 16 & 20).....	1

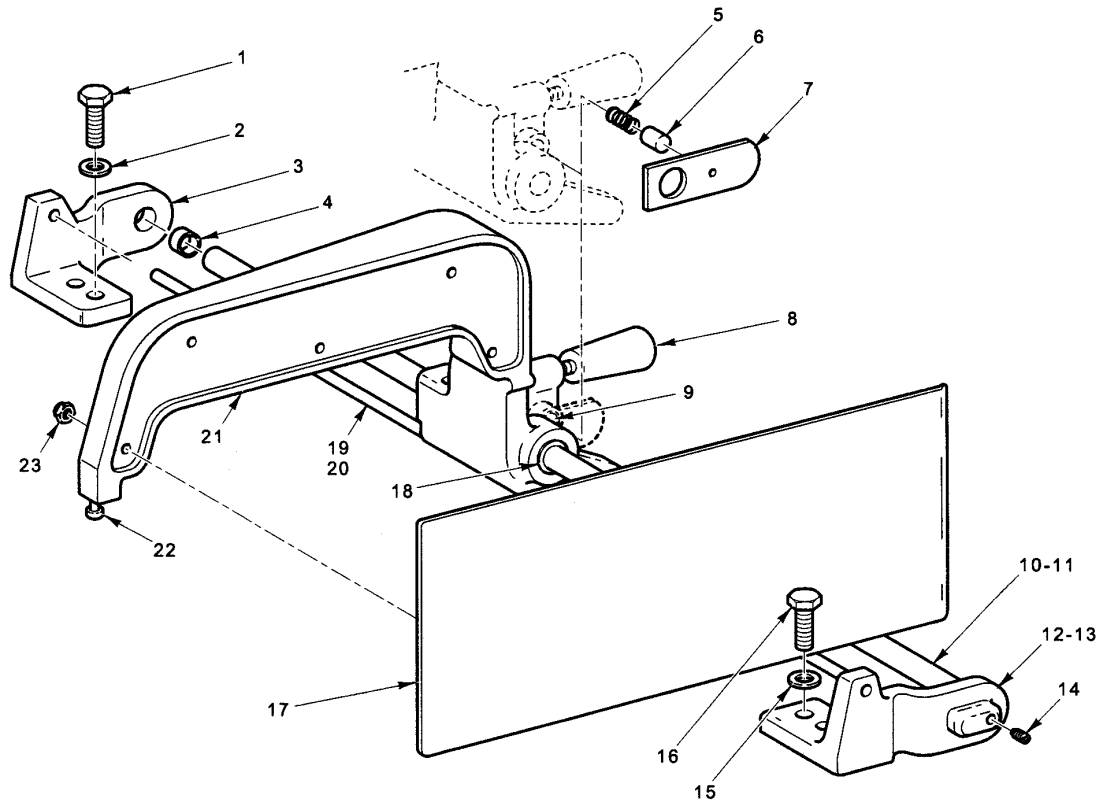


ELECTRICAL UNIT

ELECTRICAL UNIT

ILLUS.	PART NO.	NAME OF PART	AMT.
	PL-55843		
1	SC-025-33	Mach. Screw 8-32 x 1/2 Bndg. Hd.....	2
2	NS-048-85	Nut Assy. 8-32.....	2
3	FE-019-48	Fuse (0.8 Amp., 600 V.).....	2
	FE-016-29	Fuse (1 Amp 600V.) (380/415V.).....	AR
*4	00-120907-00001	Transformer.....	1
**	00-916905-00005	Transformer.....	2
*	00-120908-00001	Transformer (380 / 415 V.).....	AR
**	00-294500-030-1	Transformer (380/415V.).....	AR
*5	00-114707	Terminals & Mounting Board Assy. Fuse Board.....	1
**	00-968042	Fuse Block Fuse Board.....	2
6	NS-011-12	Nut 8-32 Hex.....	3
7	WS-023-22	Washer (SST).....	3
8	00-078752-00009	Clamp - Cable.....	3
***9		Heater - Element (Overload Relay).....	AR
10	00-088196-009-1	Relay - Thermal Overload (3 Ph.) Less Elements.....	1
11	SD-015-20	Self-Tapping Screw 10-32 x 3/8 Phil. Pan Hd., Type TT.....	2
12	SD-015-20	Self-Tapping Screw 10-32 x 3/8 Phil. Pan Hd., Type TT.....	2
13	00-290889	Cable & Eyelet Assy. (Panel to Column).....	1
14	00-087713-102-1	Contactory Assy. (3-Pole) (200-230 V. coil).....	1
15	00-087713-102-2	Contactory Assy. (3-Pole) (115 V. coil).....	1
16	SD-015-20	Self-Tapping Screw 10-32 x 3/8 Phil. Pan Hd., Type TT.....	2
17	00-108199-00001	Clamp - Air Heater.....	1
18	00-122345-00001	Heater Assy. (115V. Control Circuit).....	1
19	00-122345-00002	Heater Assy. (200-230 V. Control Circuit).....	1
20	00-121543	Shield - Heater.....	1
21	00-123241-00001	Bracket - Switch.....	1
22	00-873781	Actuator Switch.....	1
23	PC-005-08	Cotter Pin 3/32 x 5/8 Lg.....	1
24	00-121827	Ring - Locking.....	1
25	00-875567	Switch Assy.....	1
26	SC-053-05	Mach. Screw 10-24 x 5/8 Truss Hd.....	2
27	00-121547	Spring - Compression.....	1
28	00-875049	Retaining Ring.....	1
29	WS-018-30	Washer.....	1
30	00-290883	Bushing - Switch Shaft.....	1
31	00-290882	Shaft - Switch.....	1
32	00-291475	Label - Start/Stop.....	1
33	00-290885	Knob - Switch.....	1
34	FE-026-13	Connector 1/2 (Metallic) Sealtite.....	1
35	00-557247	Conduit - Electrical.....	1
36	00-543430	Conduit - Electrical.....	1
37	FE-026-13	Connector 1/2 (Metallic) Sealtite.....	1
38	00-291512	Switch and Bracket Includes items 21-25, 27, & 31 (Does not include 26, 28-30, 32, & 33).....	1

* Before Manufacturer Date 10/18/13
 ** After Manufacturer Date 10/18/13
 *** Give Elec. Spec., Mach. Model, & Motor Type.



PL-55844

GAUGE PLATE UNIT

GAUGE PLATE UNIT

ILLUS.	PART NO.	NAME OF PART	AMT.
PL-55844			
1	SC-041-31	Cap Screw 3/8-16 x 1-1/4 Hex Hd. (SST).....	2
2	WS-018-40	Washer (SST).....	2
3	00-873713-00002	Support - Rear Rod.....	1
4	00-479644	Bearing - Sleeve.....	2
5	00-291933	Spring - Gauge Plate Lock.....	1
6	00-291932	Pin - Locking Lever.....	1
7	00-290769	Lever - Locking.....	1
8	00-070194	Handle - Gauge Plate.....	1
9	00-110544-00010	Bushing - Gauge Plate Frame.....	1
10	00-290770-00003	Shaft - Gauge Plate (Model 6614 ML-134096).....	1
11	00-290770	Shaft - Gauge Plate (Model 6801 ML-134094).....	1
12	00-873712-00002	Front Shaft & Rod Support Assy. (Incls. Items 13 & 14).....	1
13	PG-006-11	Pin - Groove 1/4 x 5/8 Type D.....	1
14	SC-064-27	Set Screw 5/16-18 x 1/2 Soc. Hdls., Cup Pt. Nylok.....	1
15	WS-018-40	Washer (SST).....	2
16	SC-041-31	Cap Screw 3/8-16 x 1-1/4 Hex Hd. (SST).....	2
17	00-291431	Plate and Stud Assy.....	1
18	00-110544-00009	Bushing - Gauge Plate Frame.....	2
19	00-290758-00004	Rod - Table Anchor (Right Table) (Model 6614 ML-134096).....	1
20	00-290758-00002	Rod - Table Anchor (Right Table) (Model 6801 ML-134094).....	1
21	00-291944	Gauge Plate Assy. (Incls. Items 9, 17, 18, 22, & 23).....	1
22	00-290764	Button - Glide.....	1
23	NS-025-04	Crown Nut 1/4-20 (SST).....	5
	00-292347	Gauge Plate Assy. (Incls. Items 5, 6, 7, 17, 21, & 22) (Packaged).....	1

