



# PARTS MANUAL

## MODEL C44B+ SERIES DISHWASERS

*MODE: LEFT TO RIGHT OPERATION*

*RIGHT TO LEFT OPERATION*

**HOBART FOOD EQUIPMENT CO., LTD.**

Version1.2 1110

# CONTENT

<b>NO.</b>	<b>Description</b>	<b>Page</b>
1	TRACK AND CRADLE	3
2	WASH ARMS AND TUBES	5
3	WATER PROTECTION	7
4	ACTUATOR MECHANISM AND RINSE DRAIN-OFF PAN	9
5	DRAIN UNIT	11
6	DOOR, CURTAINS, BAFFLES, AND STRAINERS	13
7	MISCELLANEOUS	15
8	ECLECTRIC HEAT	17
9	CONVEYOR DRIVE TRAIN	19
10	CONTROL BOX AND BOOSTER COVER	21
11	COMPONENT PANEL(NEW)	23
12	CONVEYOR DRIVE MOTOR	25
13	WASH MOTOR AND PUMP UNIT	27
14	BOOSTER ASSY	29
15	RINSE SYSTEM R-L	31
16	RINSE SYSTEM L-R	33
17	RINSE SYSTEM WITHOUT BOOSTER	35
18	FILLING SYSTEM (WITH BOOSTER)	37
19	FILLING SYSTEM (WITHOUT BOOSTER)	41

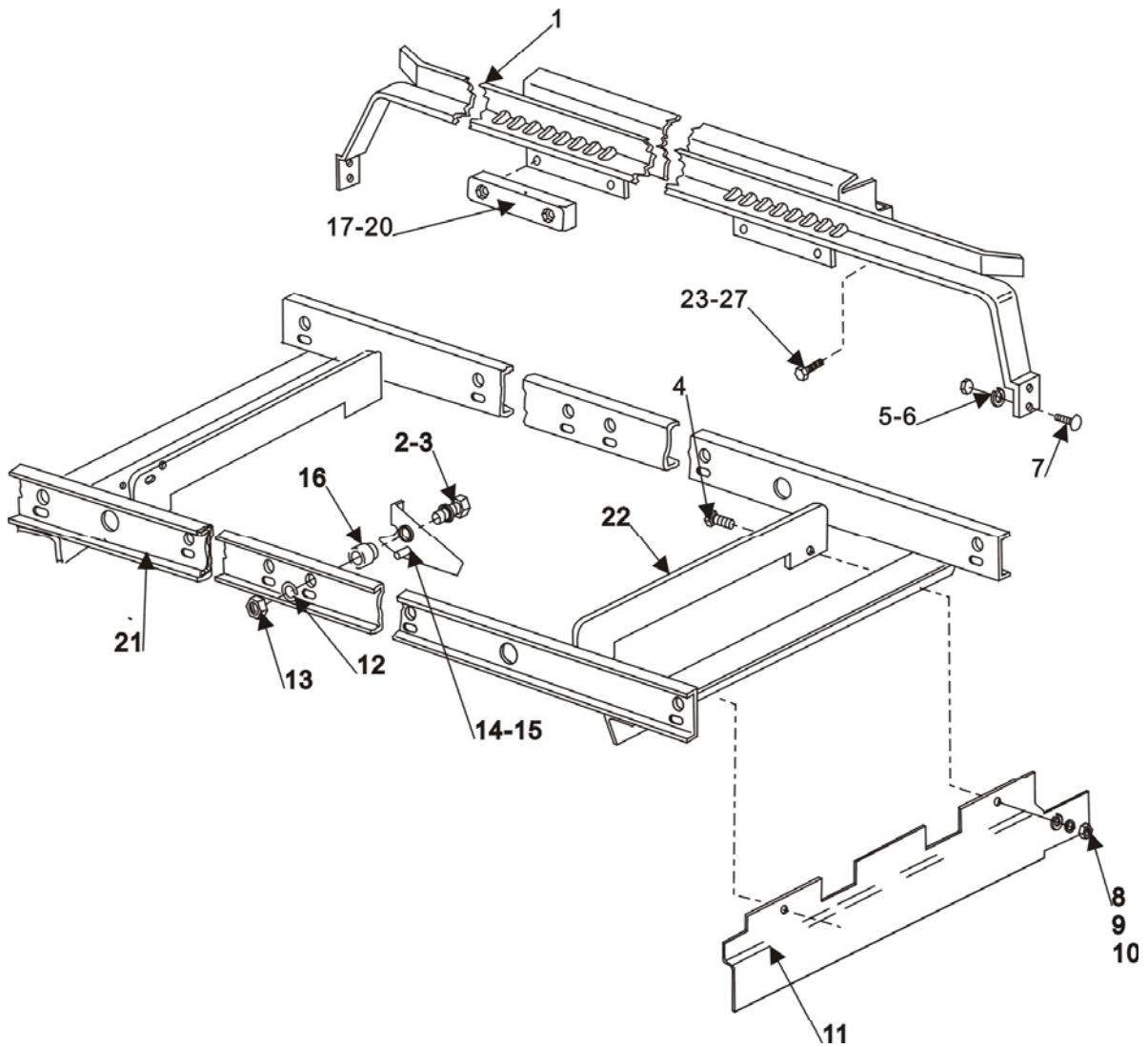


Fig.1 TRACK AND CRADLE

**C44B+ SERIES DISHWASHER REPLACEMENT PARTS****TRACK AND CRADLE**

<b>NO.</b>	<b>PART NO.</b>	<b>NAME OF PART</b>	<b>AMT</b>
1	742306	Rack Track	2
2	WS-018-04	Washer	6
3	SC-041-31	Cap Screw 3/8-16 x 1 1/4 Hex Hd	6
4	SC-041-10	Cap Screw 5/16-18 x 5/8 Hex Hd	4
5	NS-015-11	Nut 5/16 – 18 Hex	8
6	WL-006-23	Lockwasher 5/16 Medium (SST)	8
7	SC-041-11	Cap Screw 5/16-18 x 3/4 hex Hd. (SST)	8
8	NS-015-11	Nut 5/16 – 18 Hex	4
9	WS-017-08	Washer	4
10	WL-006-23	Lockwasher 5/16 Medium (SST)	4
11	742214	Baffle – Lower (R – L Only)	1
12	WL-006-28	Lockwasher 3/8 Medium	6
13	NS-015-13	Nut 3/8-16 Hex	6
14	436704-1	Dog (Front, R-L) (Rear, L-R)	3
15	436704-2	Dog – Not Shown (Front, L-R)(Rear, R-L)	3
16	270983	Spacer	6
17	473231	Slider – Large	4
18	SC-041-15	Cap Screw 5/16 – 18 x 1 1/4 Hex Hd	8
19	WL-006-23	Lockwasher 5/16 Medium (SST)	8
20	NS-015-11	Nut 5/16 – 18 Hex	8
21	742329	Cradle	1
22	742130	Baffle – Cradle Upper	2
23	SC-041-31	Cap Screw 3/8-16 x 1 1/4 Hex Hd	2
24	SC-041-11	Cap Screw 5/16-18 x3/4 Hex Hd. (SST)	10
25	WS-017-01	Washer	20
26	WL-006-23	Lockwasher 5/16 Medium (SST)	14
27	NS-015-11	Nut 5/16 – 18 Hex	14

C44B+ SERIES DISHWASHER REPLACEMENT PARTS

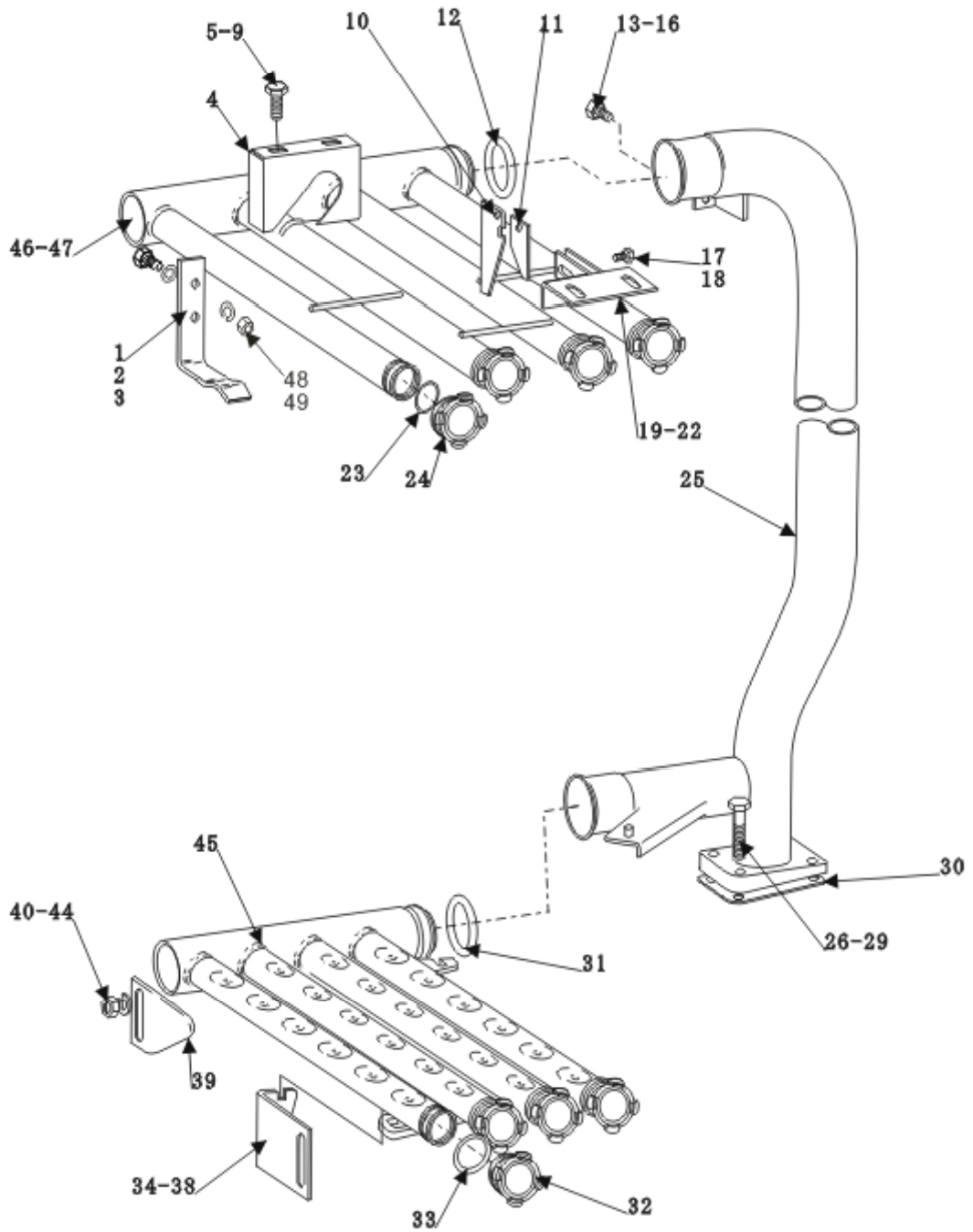


Fig.2 WASH ARMS AND TUBES

**C44B+ SERIES DISHWASHER REPLACEMENT PARTS****WASH ARMS AND TUBES**

<b>NO.</b>	<b>PART NO.</b>	<b>NAME OF PART</b>	<b>AMT</b>
1	436947-1	Hanger	2
2	SC-041-05	Cap Screw 1.4-20 x 1/2 Hex Hd	4
3	WL-006-17	Lockwasher1/4	4
4	742187	Guide – Upper Wash Arm	1
5	SC-041-11	Cap Screw 5/16-18 x3/4 Hex Hd.(SST)	2
6	WS-017-01	Washer.	2
7	WS-017-08	Washer	2
8	WL-006-23	Lockwasher 5/16 Medium (SST)	2
9	NS-015-11	Nut 5/16-18 Hex	2
10	289760	Latch	1
11	289759	Latch	1
12	67500-110	O Ring	1
13	SC-041-01	Cap Screw 1/4 –20 x 3/4 Hex Hd	1
14	WS-022-01	Washer	2
15	WL-006-17	Lockwasher1/4	1
16	NS-015-01	Nut 1/4-20 Hex (SST)	1
17	SC-041-01	Cap Screw 1/4 –20 x 3/4 Hex Hd	2
18	NS-031-19	Stop Nut 1/4-20 Elastic (SST)	2
19	742308	Bracket	1
20	WS-017-08	Washer	2
21	WL-006-23	Lockwasher 5/16 Medium (SST)	2
22	NS-015-11	Nut 5/16-18 Hex	2
23	67500-127	O Ring	4
24	475087	Plug – Wash Arm	4
25	742307	Wash Pipe	1
26	SC-041-18	Cap Screw 5/16 –18 x 1 3/4 Hex Hd (SST)	4
27	WS-017-08	Washer	8
28	WL-006-23	Lockwasher 5/16 Medium (SST)	4
29	NS-015-11	Nut 5/16-18 Hex	4
30	270968	Gasket- Wash Pipe	1
31	67500-110	O Ring	1
32	475087	Plug – Wash Arm	4
33	67500-127	O Ring	4
34	742185	Catch-Adjustable	1
35	NS-015-11	Nut 5/16-18 Hex	2
36	WL-006-23	Lockwasher 5/16 Medium (SST)	2
37	WS-017-08	Washer	2
38	SC-041-11	Cap Screw 5/16-18 x3/4 Hex Hd. (SST)	2
39	742184	Support – Adjustable	1
40	SC-041-13	Cap Screw 5/16-18 x1Hex Hd. (SST)	2
41	SC-041-11	Cap Screw 5/16-18 x3/4 Hex Hd. (SST)	2
42	WL-006-23	Lockwasher 5/16 Medium (SST)	2
43	WS-017-08	Washer	2
44	NS-015-11	Nut 5/16-18 Hex	2
45	742305	Wash Arm- Lower	1
46	742330	Wash Arm (R-L)	1
47	742331	Wash Arm (L-R)	1
48	WS-022-01	Lock washer	4
49	NS-031-21	Nut	4

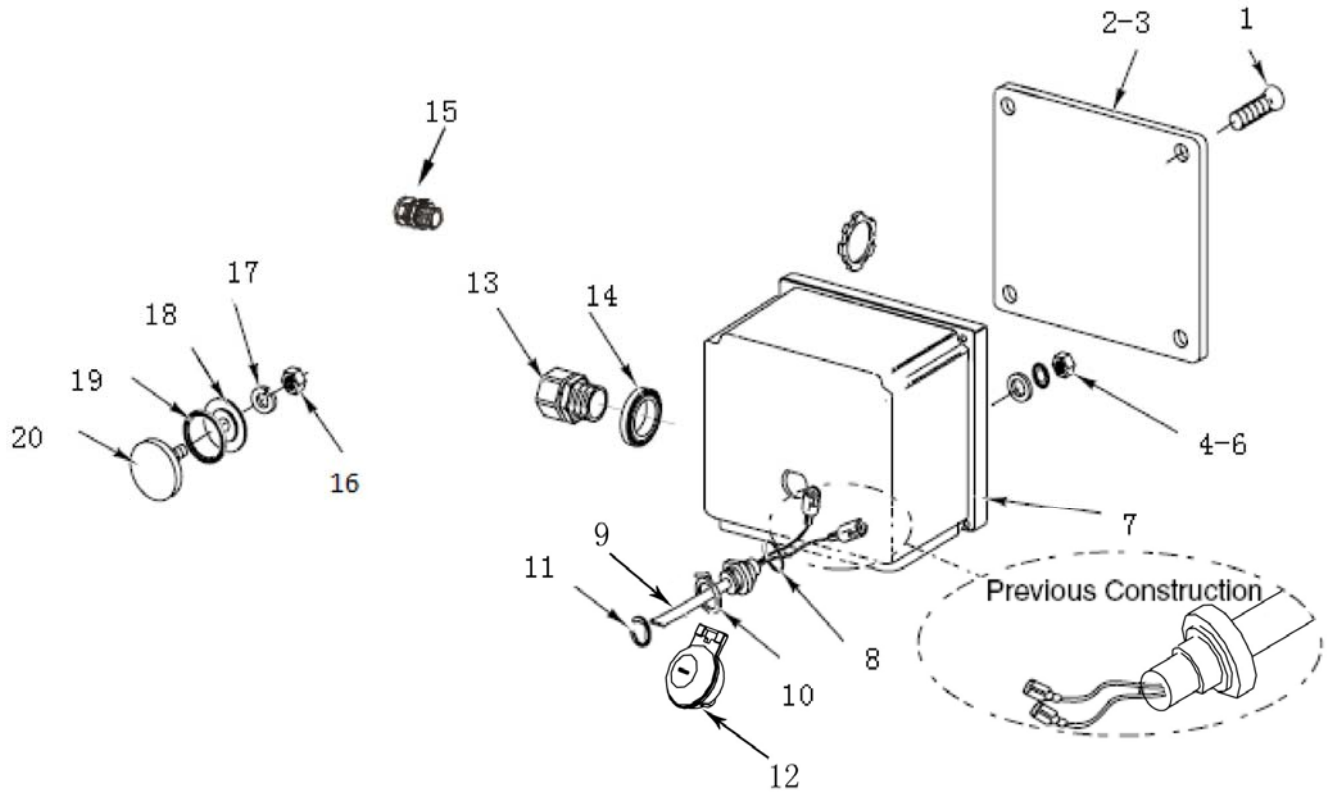


Fig.3 WATER PROTECTION

## C44B+ SERIES DISHWASHER REPLACEMENT PARTS

---

### WATER PROTECTION

<b>NO.</b>	<b>PART NO.</b>	<b>NAME OF PART</b>	<b>AMT</b>
1	SD-012-20	Self – Tapping Screw 8-32 x1/2 Phil. Truss Hd.. Type T	4
2	112007	Gasket	1
3	288465	Lid & Gasket Assy. (Incls Item	1
4	NS-018-28	Jam Nut 1/2 – 20 Hex	1
5	WL-014-31	Lockwasher 1/2 External Shake proof (SST)	1
6	WS-010-40	Washer	1
7	743870	Junction Box – Auto Fill	1
8	67500-72	O Ring	1
--	328495	Probe & Switch Assy. (2 Wire) (Incls Item 9-12)	1
9	328486	Probe & Switch	1
10	122674	Float Assy	1
11	RR-010-13	Retaining Ring	1
12	112647	Retainer – Float	1
13	FE-024-49	Connector – Straight 1/2	1
14	FE-008-10	1/2 Gasket Assy.	1
15	FE-024-57	Connector – Straight 1/2(incls Gasket).	1
16	NS-015-01	Nut 1/4-20 Hex (SST)	1
17	WL-006-17	Lockwasher 1/4 Medium	1
18	119254	Retainer	1
19	67500-31	O Ring	1
20	119244	Cap & Stud Assy	1



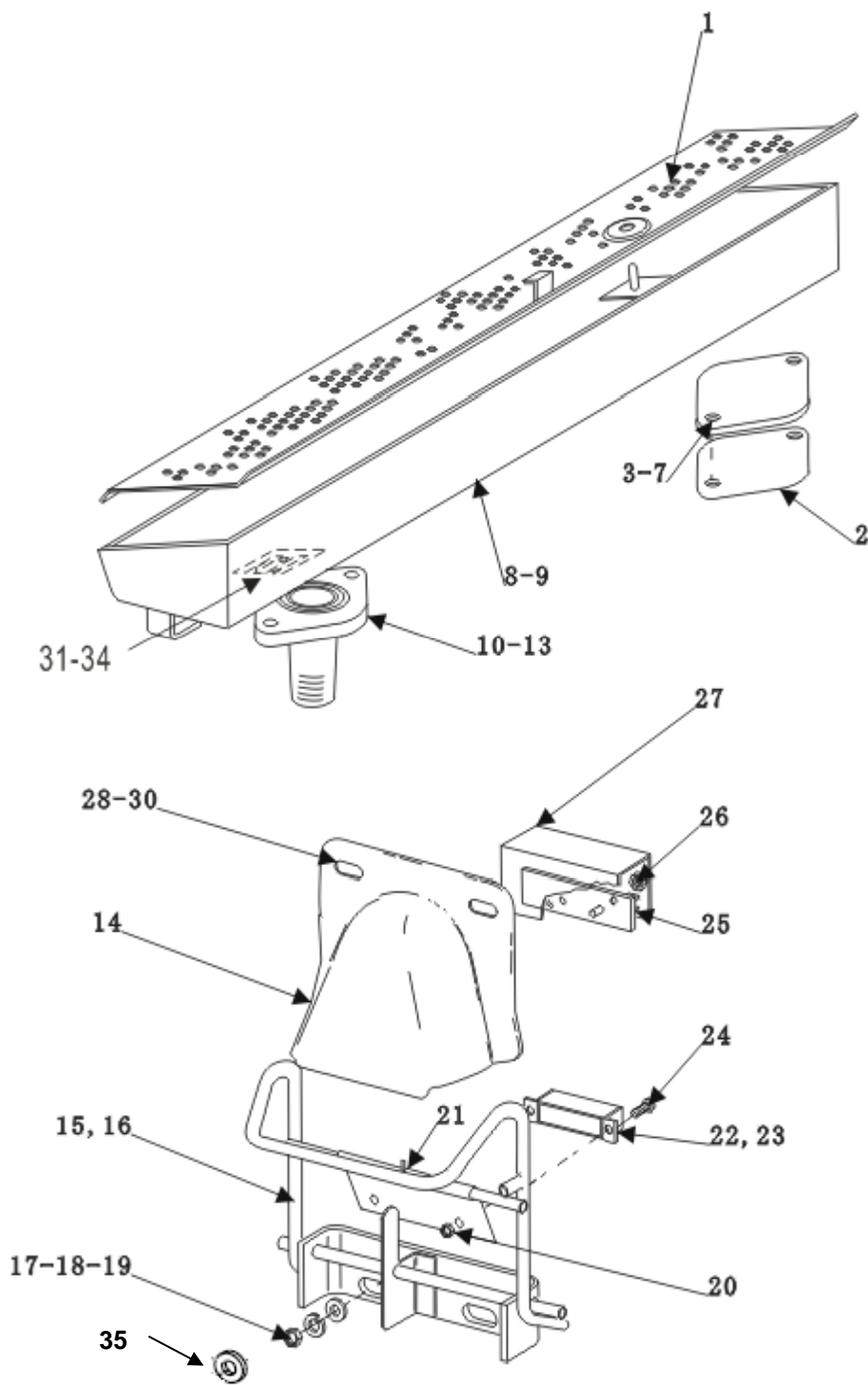


Fig.4 ACTUATOR MECHANISM AND RINSE DRAIN-OFF PAN

## C44B+ SERIES DISHWASHER REPLACEMENT PARTS

### ACTUATOR MECHANISM AND RINSE DRAIN-OFF PAN

NO.	PART NO.	NAME OF PART	AMT
1	742336	Strainer	1
2	276407	Gasket – Rinse Pipe	1
3	742219	Flange	1
4	SC-041-12	Cap Screw 5/16 – 18 x7/8 Hex Hd	2
5	WS-029-05	Washer	2
6	WL-006-23	Lockwasher 5/16 Medium (SST)	2
7	NS-015-11	Nut 5/16-18 Hex	2
8	742317	Rinse Pan Assy. (R-L).	1
9	742315	Rinse Pan Assay (L-R)	1
10	475056	Flange & Nipple Assay	1
11	436827	Gasket	1
12	WL-006-23	Lockwasher 5/16 Medium (SST)	2
13	NS-015-11	Nut 5/16-18 Hex.	2
14	436835	Shroud	2
15	742318	Actuator (R-L)	2
16	742319	Actuator (L-R)	2
17	WL-006-23	Lockwasher 5/16 Medium (SST)	4
18	WS-017-08	Washer	4
19	NS-015-11	Nut 5/16-18 Hex.	4
20	NS-031-50	Stop Nut 6-32 Hex (SST)	4
21	PC-005-07	Cotter Pin 3/32 x1/2	2
22	290160	Magnet	2
23	742026	Retainer – Magnet	2
24	SC-021-08	Mach. Screw 6-32 x3/8 Rd. Hd. (SST)	4
25	473415	Switch – Reed Encapsulated <b>892896</b>	2
26	NS-031-50	Stop Nut 6-32 Hex (SST)	4
27	270996	Insulator - Switch	2
28	NS-029-01	Wing Nut 1/4- 20	4
29	WL-006-17	Lockwasher 1/4 Medium	4
30	WS-017-06	Washer	4
31	742192	Panel	1
32	WS-017-06	Washer	2
33	WL-006-17	Lock washer	2
34	NS-015-01	Nut	2
35	WS-029-05	Washer	4

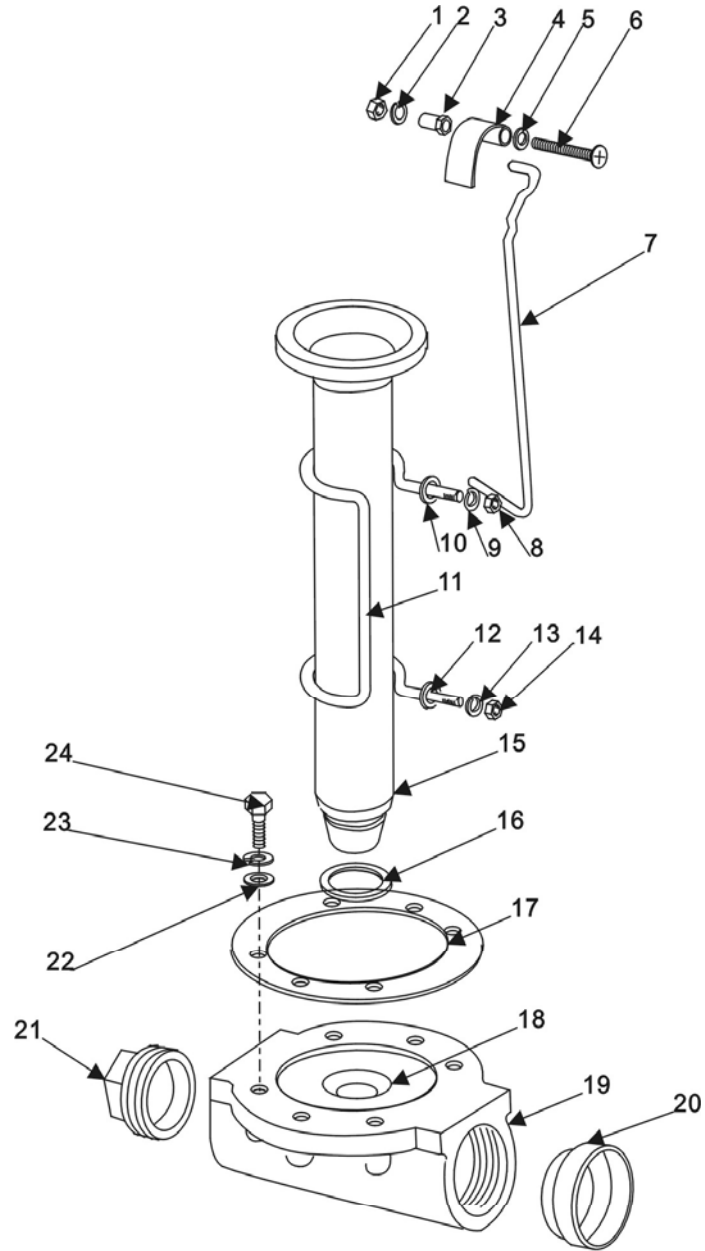


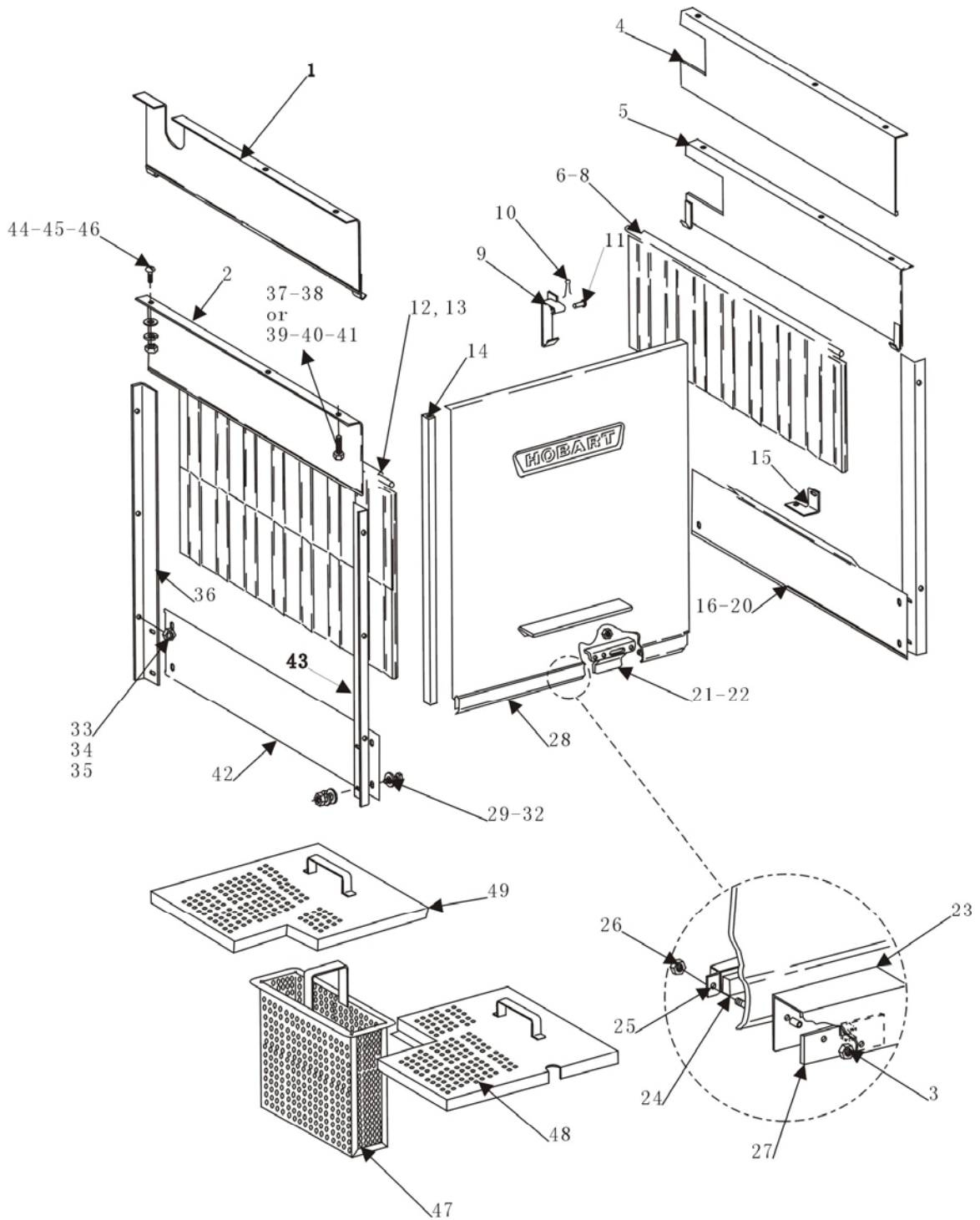
Fig.5 DRAIN UNIT

**C44B+ SERIES DISHWASHER REPLACEMENT PARTS**

---

**DRAIN UNIT**

<b>NO.</b>	<b>PART NO.</b>	<b>NAME OF PART</b>	<b>AMT</b>
1	<del>NS-051-01</del>	<del>Nut 1/4 20 Hex (SST)</del> NS-M6 , Nut M6	1
2	WL-006-17	Lockwasher 1/4 Medium	1
3	119116-C1	Axle – Drain Lever	1
4	742095	Drain Lever (RH)	1
5	WS-022-01	Washer	1
6	SCT-M6-35	Screw M6x35 Rd.	1
7	270953	Lift Rod Overflow	1
8	NS-015-11	Nut 5/16-18 Hex	2
9	WL-006-23	Lockwasher 5/16 Medium (SST)	1
10	WS-017-01	Washer	2
11	270952	Retainer	1
12	WS-017-01	Washer.	2
13	WL-006-23	Lockwasher 5/16 Medium (SST)	1
14	NS-015-11	Nut 5/16-18 Hex	2
15	119099-2	Tube- Overflow	1
16	67500-120	O Ring	1
17	289464	Gasket – Drain	1
18	270947	Sleeve – Drain Body	1
19	289465	Drain Body	1
20	328813	Bushing – Drain	1
21	FP-028-32	Pipe Plug 2 Sq. Hd	1
22	WS-006-44	Washer	6
23	WL-006-28	Lockwasher 3/8 –16 x1 Hex Hd. (SST)	6
24	SC-041-10	Cap Screw 3/8-16 x 1 Hex Hd. (SST)	6



**Fig.6 DOOR, CURTAINS, BAFFLES, AND STRAINERS**

**DOOR, CURTAINS, BAFFLES, AND STRAINERS**

<b>NO.</b>	<b>PART NO.</b>	<b>NAME OF PART</b>	<b>AMT</b>
1	742334	Baffle – Unloading (R-L)	1
2	742326	Baffle - Loading (L-R)	1
3	NS-031-50	Stop Nut 6-32 Hex (SST)	2
4	742335	Baffle – Loading (R-L)	1
5	742302	Baffle – Unloading (L-R).	1
6	120151-1	Splash Curtain	1
7	120151-1	Splash Curtain. (Gas heat)	1
8	742222	Curtain Rod	2
9	742312	Catch – Door	1
10	PC-005-02	Cotter Pin 1/16 x1/2 (SST)	1
11	12114	Pin	1
12	271084	Splash Curtain	2
13	742222	Curtain Rod	2
14	112378-49	Door Slide	2
15	742158	Bracket (ONLY L-R)	1
16	742160	Baffle (ONLY L-R)	1
17	SC-041-05	Cap Screw 1/4 –20 x 5/8 Hex Hd. (SST).	3
18	WL-006-17	Lockwasher 1/4 Medium	3
19	WS-017-06	Washer	3
20	NS-015-01	Nut 1/4 – 20 Hex (SST)	6
21	328065	Actuator – Lift Drain	1
22	NS-031-21	Stop Nut – Special 1/4-20 Hex	2
23	270996	Insulator – Switch	1
24	290160	Magnet	2
25	742026	Retainer – Magnet	2
26	NS-031-50	Stop Nut 6-32 Hex (SST)	2
27	892896	Reed Mounting Board Assy(old no.473415)	1
28	742321	Door	1
29	SC-041-05	Cap Screw 1/4 –20 x 5/8 Hex Hd. (SST)	4
30	WS-017-06	Washer	8
31	WL-006-17	Lockwasher 1/4 Medium	4
32	NS-015-01	Nut 1/4–20 Hex (SST)	4
33	WS-022-01	Washer	9
34	WL-006-17	Lockwasher 1/4 Medium	9
35	NS-015-01	Nut 1/4–20 Hex (SST)	9
36	742161	Baffle - Vertical	2
37	WL-006-17	Lockwasher 1/4 Medium	4
38	SC-041-50	Cap Screw 1/4 –20 x 5/8 Hex Hd. (SST)	4
39	WS-022-01	Washer	4
40	WL-006-17	Lockwasher 1/4 Medium	4
41	NS-015-01	Nut 1/4–20 Hex (SST)	4
42	742159	Baffle – LH Lower	1
43	742161	Baffle - Vertical	1
44	SC-053-41	Mach. Screw 1/4-20 x 1/2 Truss Hd. (SST)	2
45	WL-006-17	Lockwasher 1/4 Medium	2
46	NS-015-01	Nut 1/4–20 Hex (SST)	2
47	742311	Bucket – Strainer	1
48	742310	Strainer - Front	1
49	742309	Strainer – Rear	1

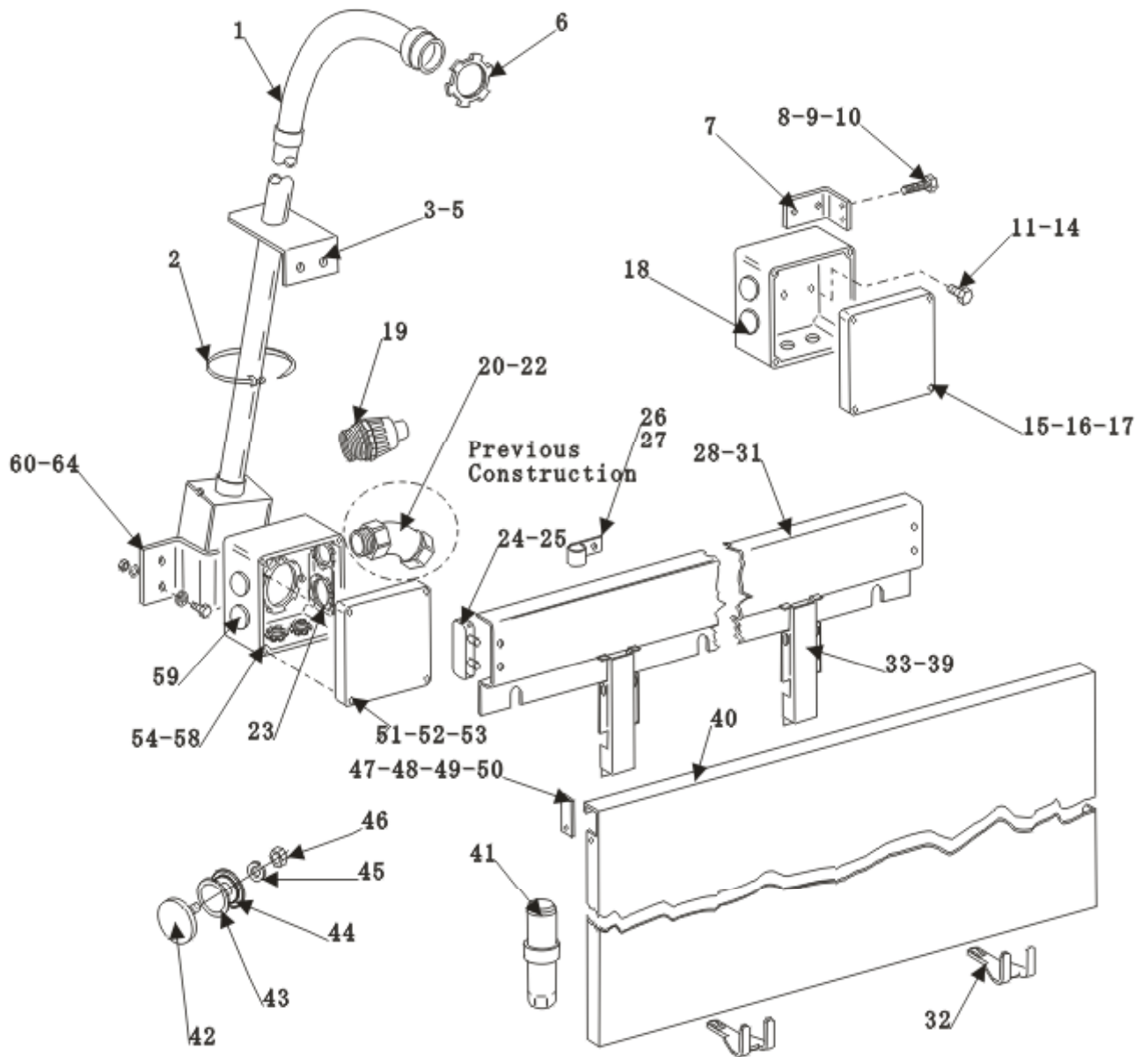


Fig.7 MISCELLANEOUS

**C44B+ SERIES DISHWASHER REPLACEMENT PARTS****MISCELLANEOUS**

<b>NO.</b>	<b>PART NO.</b>	<b>NAME OF PART</b>	<b>AMT</b>
1	274232-C	Conduit – PVC( Incls. Bracket)..	1
2	122577-2	Wire Tie	2
3	SC-041-50	Cap Screw 1/4-20 x 1/2 Hex Hd	2
4	WL-006-17	Lockwasher 1/4 Medium	2
5	NS-015-01	Nut 1/4– 20 Hex (SST)	2
6	FE-009-07	Lock Nut 3/4	2
7	742215	Bracket	1
8	SC-041-12	Cap Screw 5/16-18 x 7/8 Hex Hd	2
9	WL-006-23	Lockwasher 5/16 Medium	2
10	NS-015-11	Nut 5/6 –18 Hex (SST)	2
11	SC-041-05	Cap Screw 1/4-20 x 5/8 Hex Hd	2
12	WS-003-49	Washer	2
13	WL-006-17	Lockwasher 1/4 Medium	2
14	NS-015-01	Nut 1/4-20 Hex (SST)	2
15	288465	Lid & Gasket Assy. (Incls Item 16)	1
16	112007	Gasket	1
17	SD-012-20	Self- Tapping Screw 8-32 x1/2 Phil. Truss Hd., Type T	4
18	270923-2	Box – Junction (R.H)	1
19	FE-024-58	Connector 3/4"(Incls. O Ring & Lock Nut)	1
20	FE-008-44	Connector 3/4"(Incls. O Ring & Lock Nut).(Replaced by item19)	2
21	FE-008-11	Ring-Seal	2
22	FE-006-06	Nut	2
23	FE-024-59	Connector 1" ((Incls. O Ring & Lock Nut).	2
24	271057	Cap – Wire way	2
25	SD-007-38	Self-Tapping Screw 8 x 1/4 Phil. Bind Hd., Type B	2
26	294677-3	Clamp – Wire (3/4 I.D)	6
27	NS-047-94	Lock Nut Special 3/16	6
28	742137	Panel – Front Trim.	1
29	WS-017-06	Washer	3
30	WL-006-17	Lockwasher 1/4 Medium	3
31	NS-015-01	Nut 1/4-20 Hex (SST)	3
32	742201	Support	2
33	742136	Wire way – Vertical	2
34	SC-021-22	Screw	2
35	WL-006-07	Lockwasher #10 Medium	2
36	WS-017-06	Washer	4
37	WL-006-17	Lockwasher 1/4 Medium	4
38	NS-015-01	Nut 1/4-20 Hex (SST)	4
39	WS-019-19	Washer	2
40	742139	Panel – Front Trim (C44B&C44BW)	1
41	288946-C	Food - Adjustable (China)	4
42	119244	Cap & Stud Assy	1
43	67500-31	O Ring	1
44	119254	Retainer – Cap & Stud	1
45	WL-006-17	Lockwasher 1/4 Medium	1
46	NS-015-01	Nut 1/4-20 Hex (SST)	1
47	742138	Cover – Panel Notch	2
48	SC-053-05	Mach. Screw 10-24 x3/8 Phil. Truss Hd	2
49	WS-019-06	Washer	2
50	NS-031-16	Stop Nut 10-24 hex (SST)	2
51	288465	Lid & Gasket Assy. (Incls. Item 52)	1
52	112007	Gasket.	1
53	SD-012-20	Self – Tapping Screw 8-32x1/2 Phil. Truss Hd., Type T.	4
54	270923-1	Box – Junction (LH)	1
55	SC-041-05	Cap Screw 1/4 – 20 x5/8 Hex Hd. (SST).	2
56	WS-003-49	Washer	2
57	WL-006-17	Lockwasher 1/4 Medium	2
58	NS-015-01	Nut 1/4-20 Hex (SST)	2
59	PB-004-08	Plug	5
60	742144	Bracket	1
61	SC-041-12	Cap Screw 5/16 – 18 x 7/8 Hex Hd	2
62	WS-017-08	Washer	2
63	WL-006-23	Lockwasher 5/16 Medium (SST)	2
64	NS-015-11	Nut 5/16 – 18 Hex	2



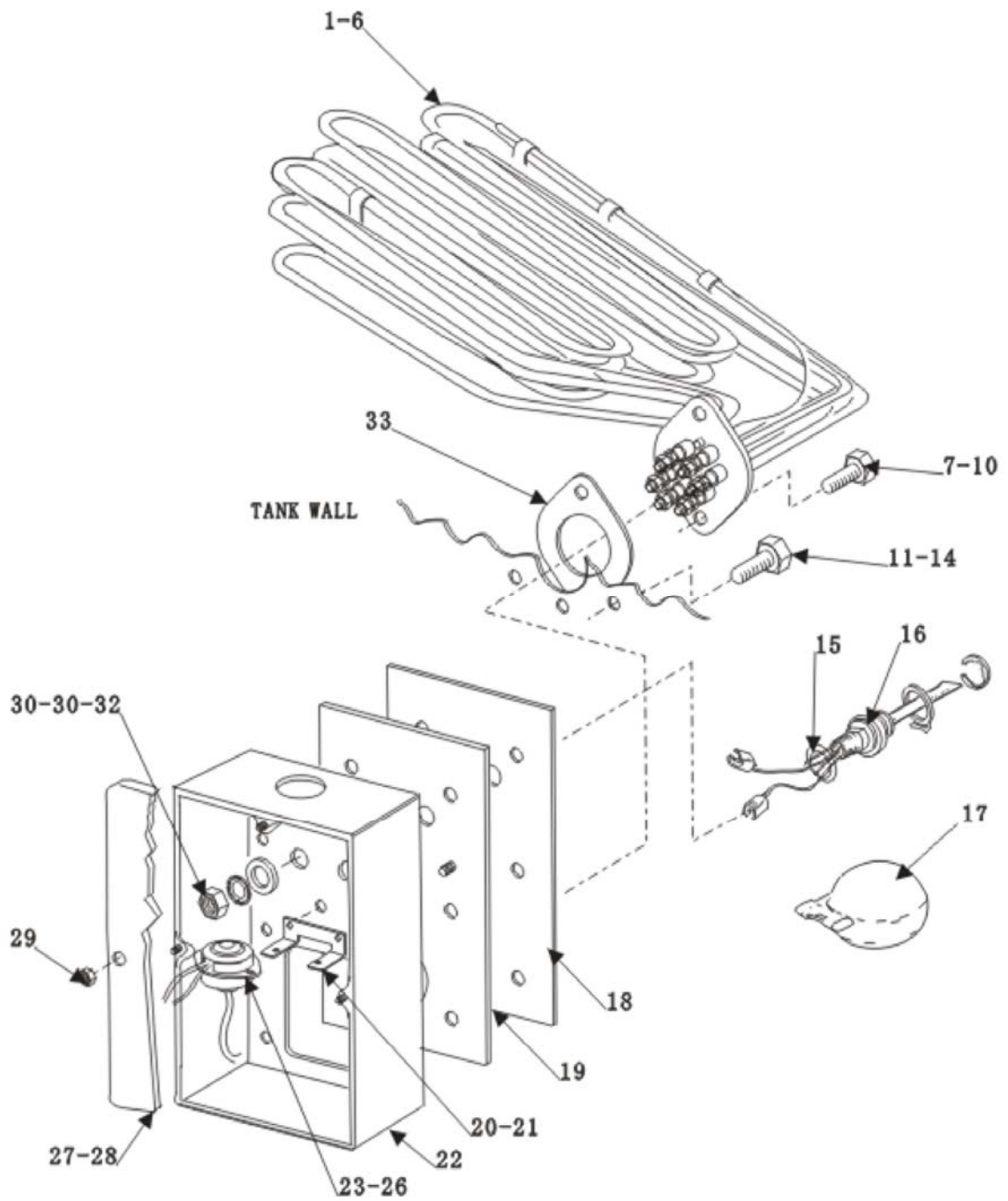


Fig.8 ECLECTRIC HEAT

**C44B+ SERIES DISHWASHER REPLACEMENT PARTS****ECLECTRIC HEAT**

<b>NO.</b>	<b>PART NO.</b>	<b>NAME OF PART</b>	<b>AMT</b>
1	473275-1	Heater – tank Electric (200v/3Ph, 7.5kw)	1
2	473275-2	Heater – tank Electric (220v/1Ph, 7.5kw)	1
3	473275-6	Heater – tank Electric (380v/50Hz/3Ph, 7.5kw)	1
4	473276-1	Heater – tank Electric (200v/3Ph, 5kw)	1
5	473276-2	Heater – tank Electric (220v/3Ph, 5kw)	1
6	473276-6	Heater – tank Electric (380v/3Ph, 5kw) (C44BW)	1
	7152081	Heater – tank Electric (380v/3Ph, 15kw)	1
	7152081-1	Heater – tank Electric (220v/3Ph, 15kw)	1
7	SC-041-13	Cap Screw 5/16-18 x1 Hex Hd. (SST)	2
8	WS-017-08	Washer	2
9	WL-006-23	Lockwasher 5/16 Medium (SST)	2
10	NS-015-11	Nut 5/16 – 18 Hex	2
11	SC-041-13	Cap Screw 5/16-18 x1 Hex Hd. (SST)	6
12	WS-029-05	Washer	12
13	WL-006-23	Lockwasher 5/16 Medium (SST)	6
14	NS-015-11	Nut 5/16 – 18 Hex	6
15	67500-72	O Ring	1
--	328495	Probe & Switch Assy. (2 Wire)(Incls. Item 16-17)	1
16	328486	Probe & Switch	1
17	122674	Float Assy	1
18	271109	Gasket – Mounting	1
19	742325	Plate – Mounting	1
20	742212	Bracket – Thermostat	1
21	NS-031-15	Stop Nut 10-24 Hex (SST)	2
22	742337	Box - Electric	1
23	271123	Protector- High Limit	1
24	SC-021-08	Mach. Screw 6-32 x 3/8 Rd. Hd. (SST)	2
25	NS-031-50	Stop Nut 6-32 Hex (SST)	2
26	293946	Sleeve	1
27	742228	Lid & Gasket Assy. (Incls item30)	1
28	112005	Gasket (Lid)	1
29	NS-031-15	Nut	4
30	WS-010-40	Washer	2
31	WL-014-31	Lockwasher 1/2 External Shake proof (SST).	2
32	NS-018-28	Jam Nut 1/2 – 20 Hex	2
33	293598	Gasket – heater Mounting	1
	294357-1	Housing – Connector (Nat).	AR
	294357-2	Housing – Connector (Black)	AR

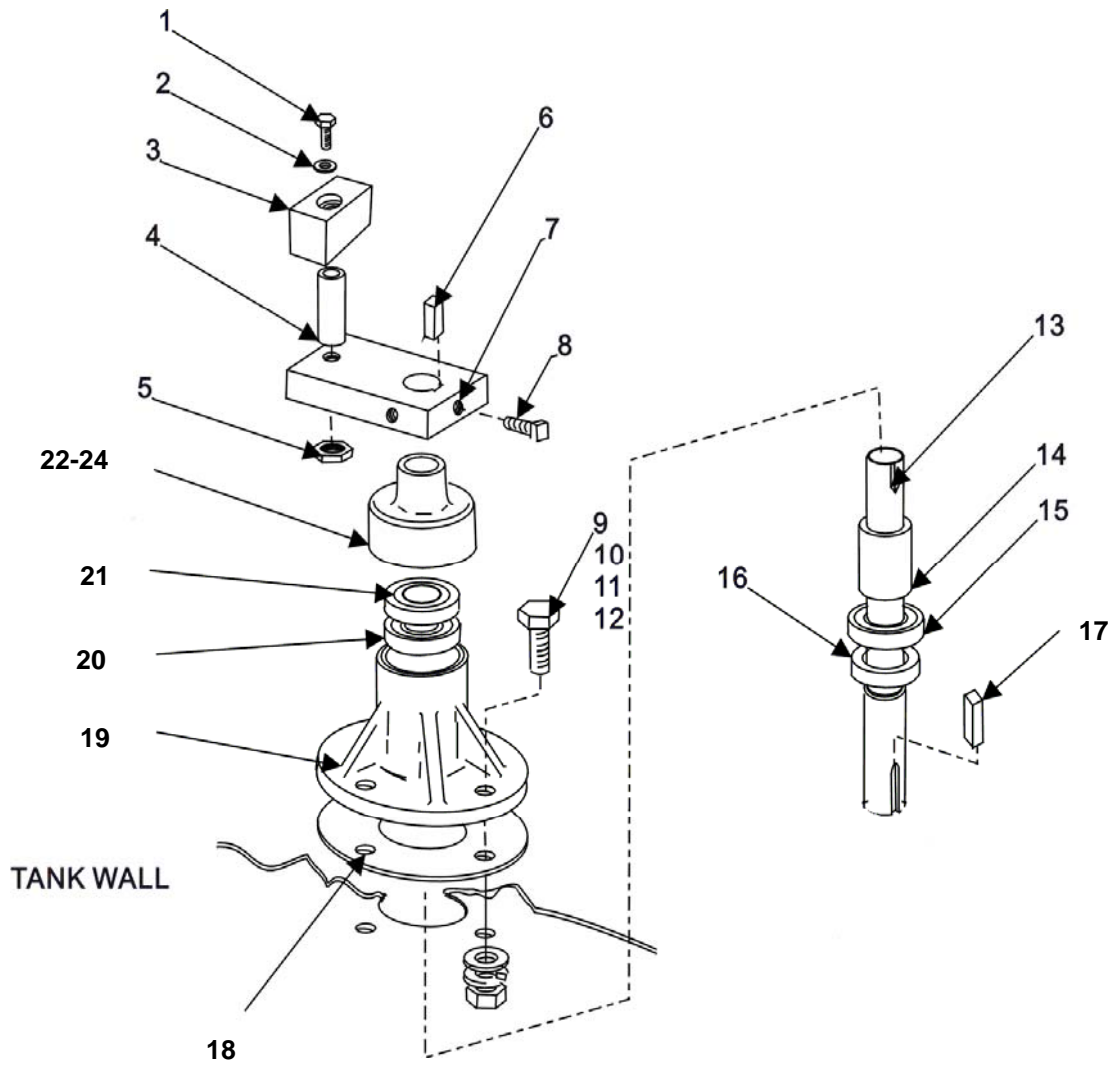


Fig.9 CONVEYOR DRIVE TRAIN

**C44B+ SERIES DISHWASHER REPLACEMENT PARTS****CONVEYOR DRIVE TRAIN**

<b>NO.</b>	<b>PART NO.</b>	<b>NAME OF PART</b>	<b>AMT</b>
1	SC-041-20	Cap Screw 5/16 – 18 x 2 1/8 Hex Hd	1
2	WS-017-08	Washer	1
3	474660	Slide – Drive Crank	1
4	437061	Spacer – Bearing	1
5	NS-032-35	Stop Nut 5/16 – 18 Flex loc	1
6	12430-39	Key 3/16 Sq. x3/8 Lg.	1
7	270943	Arm – Crank	1
8	SC-050-01	Set Screw 1/4-20x1/2 Square Hd. Cup Pt	2
9	SC-041-13	Cap Screw 5/16 – 18 x1 Hex Hd. (SST)	4
10	WS-017-08	Washer	4
11	WL-006-23	Lockwasher 5/16 Medium (SST)	4
12	NS-015-11	Nut 5/16 – 18 hex	4
13	270937	Shaft – Crank.	1
14	436879	Spacer – Bearing	1
15	BB-021-19	Ball Bearing – Hoover NSK 6003	1
16	270939	Seal – Lower Housing	1
17	12430-40	Key 3/16 Sq. x 3/4 Lg	1
18	270942	Gasket	1
19	274749	Housing Assay (incl. Item 13-16,20-22)	1
20	BB-021-19	Ball Bearing – Hoover NSK 6003	1
21	270940	Seal – upper Housing	1
22	274748	Seal Labyrinth	1
23	527042	Adhesive	AR
<del>24</del>	<del>522696</del>	<del>Solvent.</del>	<del>AR</del>

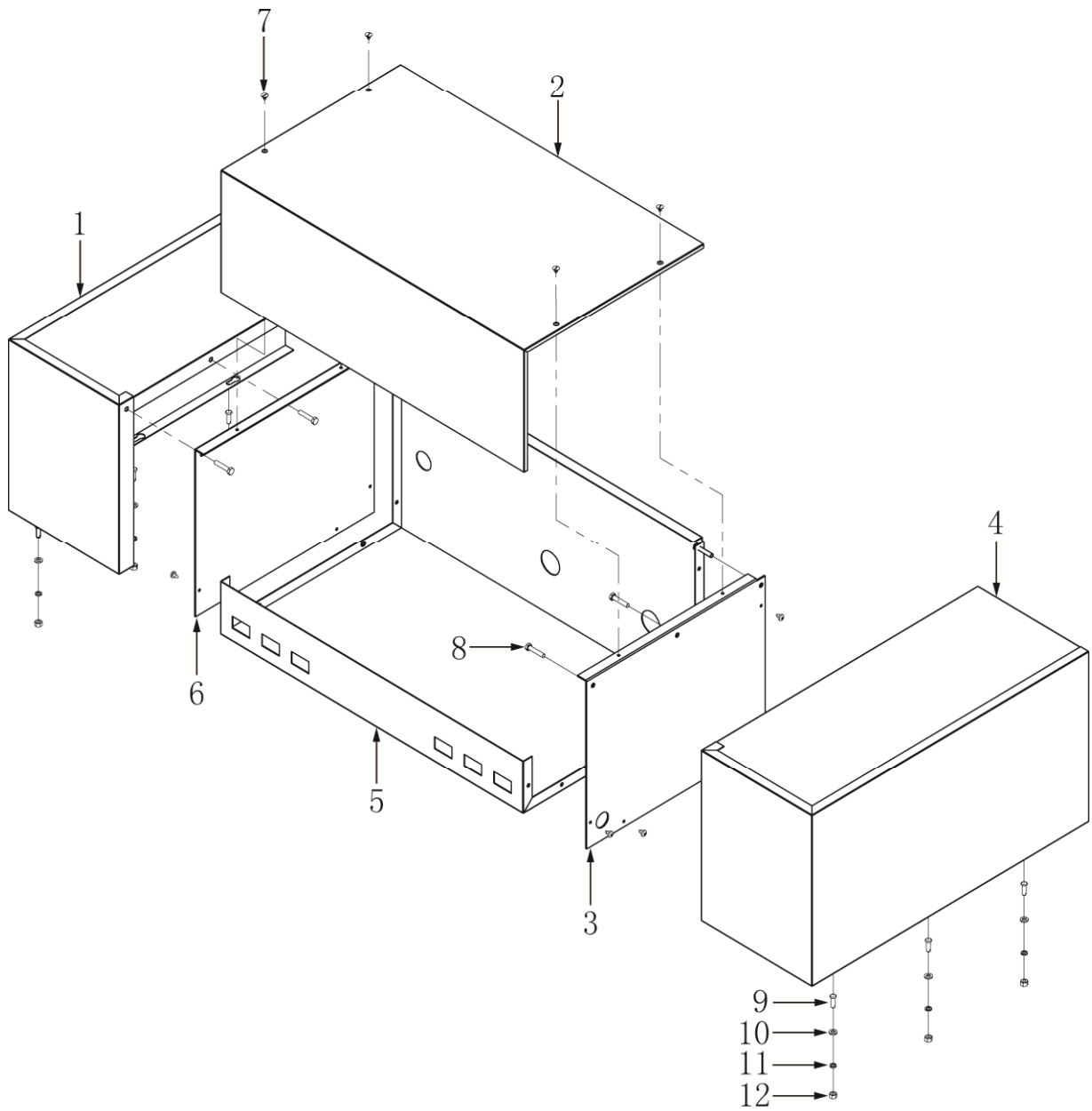


Fig.10 CONTROL BOX AND BOOSTER COVER

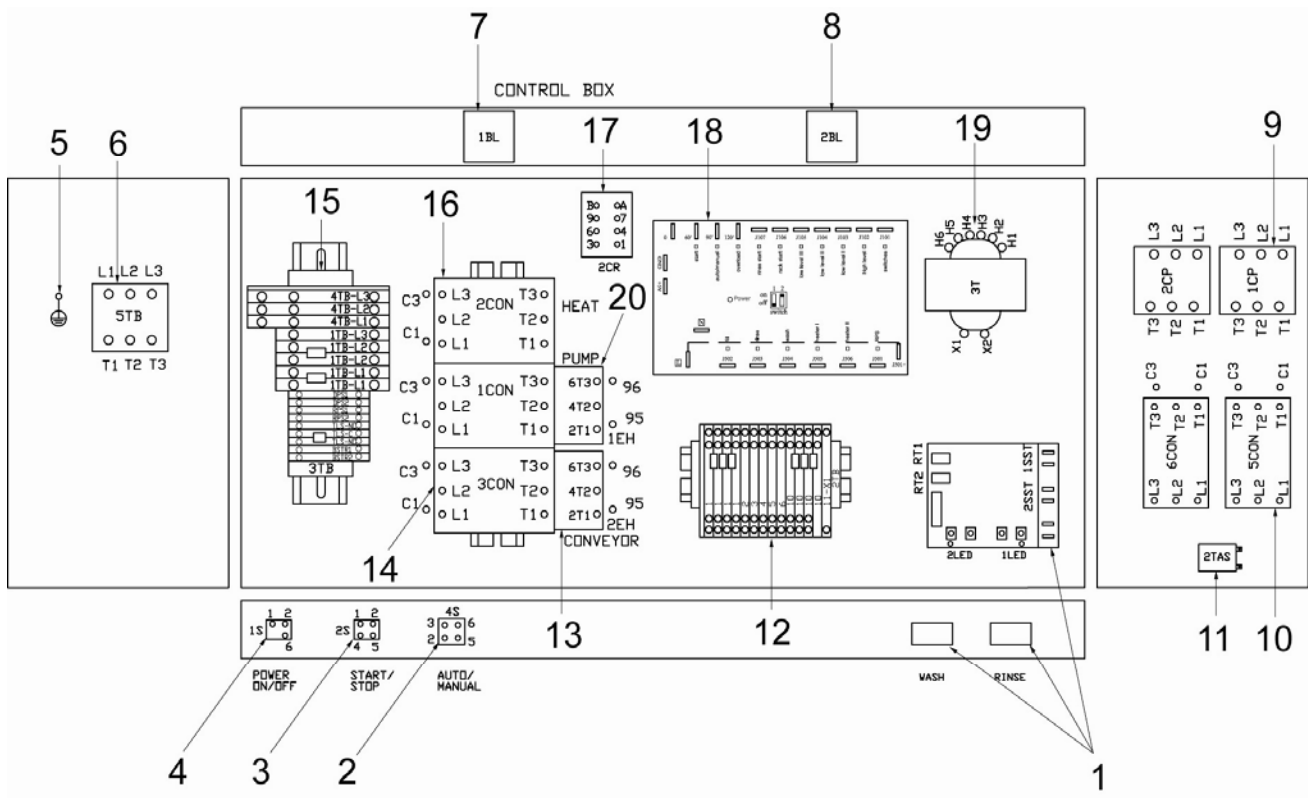
**C44B+ SERIES DISHWASHER REPLACEMENT PARTS**

---

**CONTROL BOX AND BOOSTER COVER**

<b>NO.</b>	<b>PART NO.</b>	<b>NAME OF PART</b>	<b>AMT</b>
1	7152085	Left Hood-Booster	1
2	7152015	Cover-Control Box	1
3	7152083	Right-Base Plate	1
4	7152013	Right Hood-Booster	1
5	7152076	Control Box.	1
6	7152084	Left-Base Plate	1
7	ST4.8-10	Self-tapping Screw	14
8	SCH-M6-10	Cap Screw	6
9	7152010	Pin	6
10	WS-M6	Washer	6
11	WL-M6	Lockwasher	6
12	NS-M6	Nut	6

**C44B+ SERIES DISHWASHER REPLACEMENT PARTS**



**Fig.11 COMPONENT PANEL (NEW)**

**C44B+ SERIES DISHWASHER REPLACEMENT PARTS**

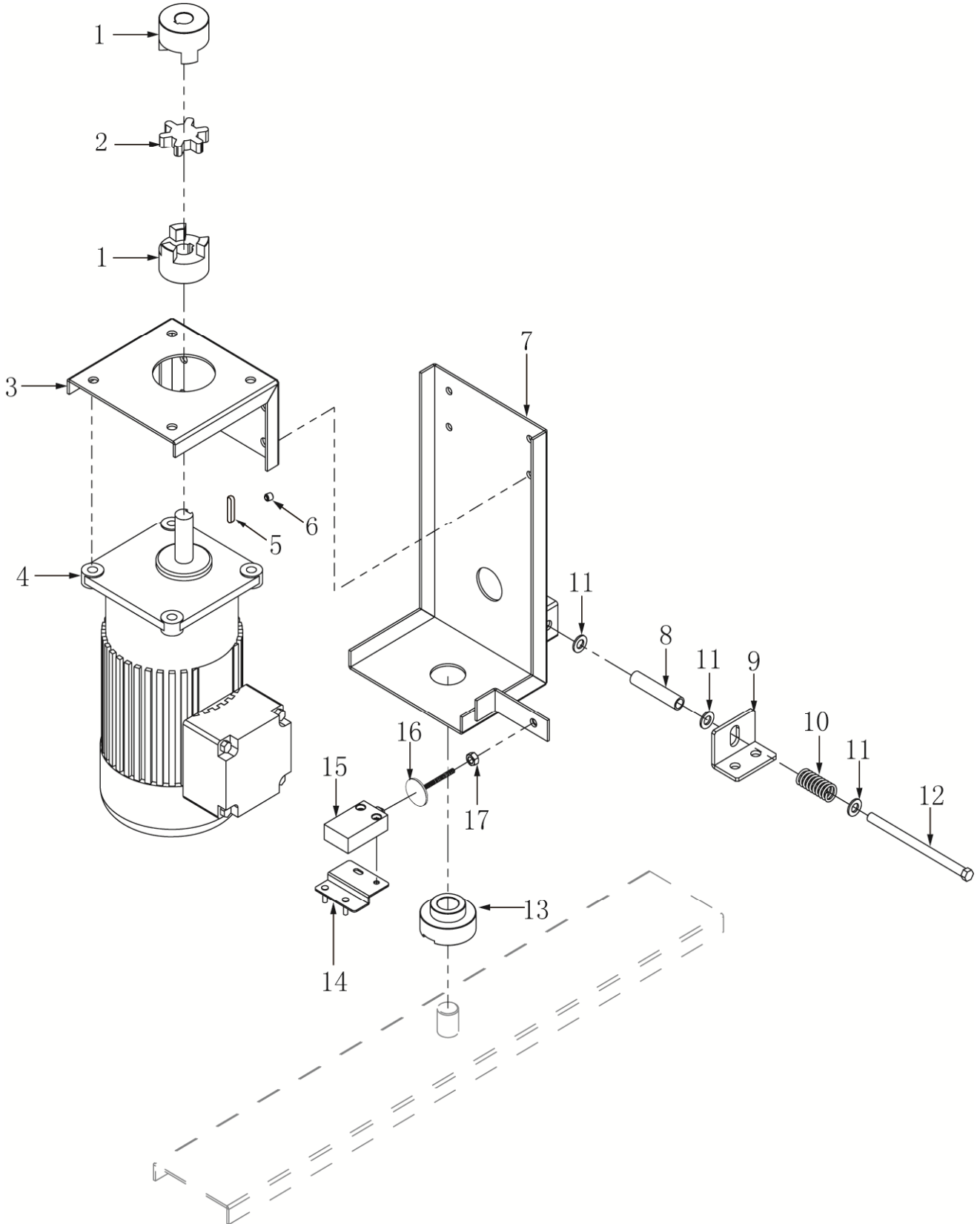
---

**COMPONENT PANEL(NEW)**

<b>NO.</b>	<b>PART NO.</b>	<b>NAME OF PART</b>	<b>AMT</b>
1	7159126-2	Thermostat-Solid State.	1
2	87711-241-1	Switch-Rocker(Timer On/Off)	1
3	87711-228-1	Switch-Rocker(Motor On/Off)	1
4	87711-198-1	Switch-Rocker(Power On/Off).	1
5	118544-2	Lug- Grounding	1
6	7152033	Terminal Block	1
7	743843	Fan Cooling(120V)	1
8	743843	Fan Cooling(120V)	1
9	7152038	Circuit Breaker 60A/3P	2
10	743855	Contactactor 80Amp. 3 Pole	2
11	743845	Thermostat 110° C.	1
12	7152025	Terminal Block	1
13	7152036	Relay	1
14	7112002	Contactactor 25Amp. 3 Pole	2
15	7152039	Terminal Block	1
16	7112011	Contactactor 50Amp. 3 Pole	1
17	87714-7-2	Relay	1
18	7152069	PC Plate	1
19	294500-024-2	Transformer	1
20	7152044	Relay	1



**C44B+ SERIES DISHWASHER REPLACEMENT PARTS**



**Fig. 12 CONVEYOR DRIVE MOTOR**

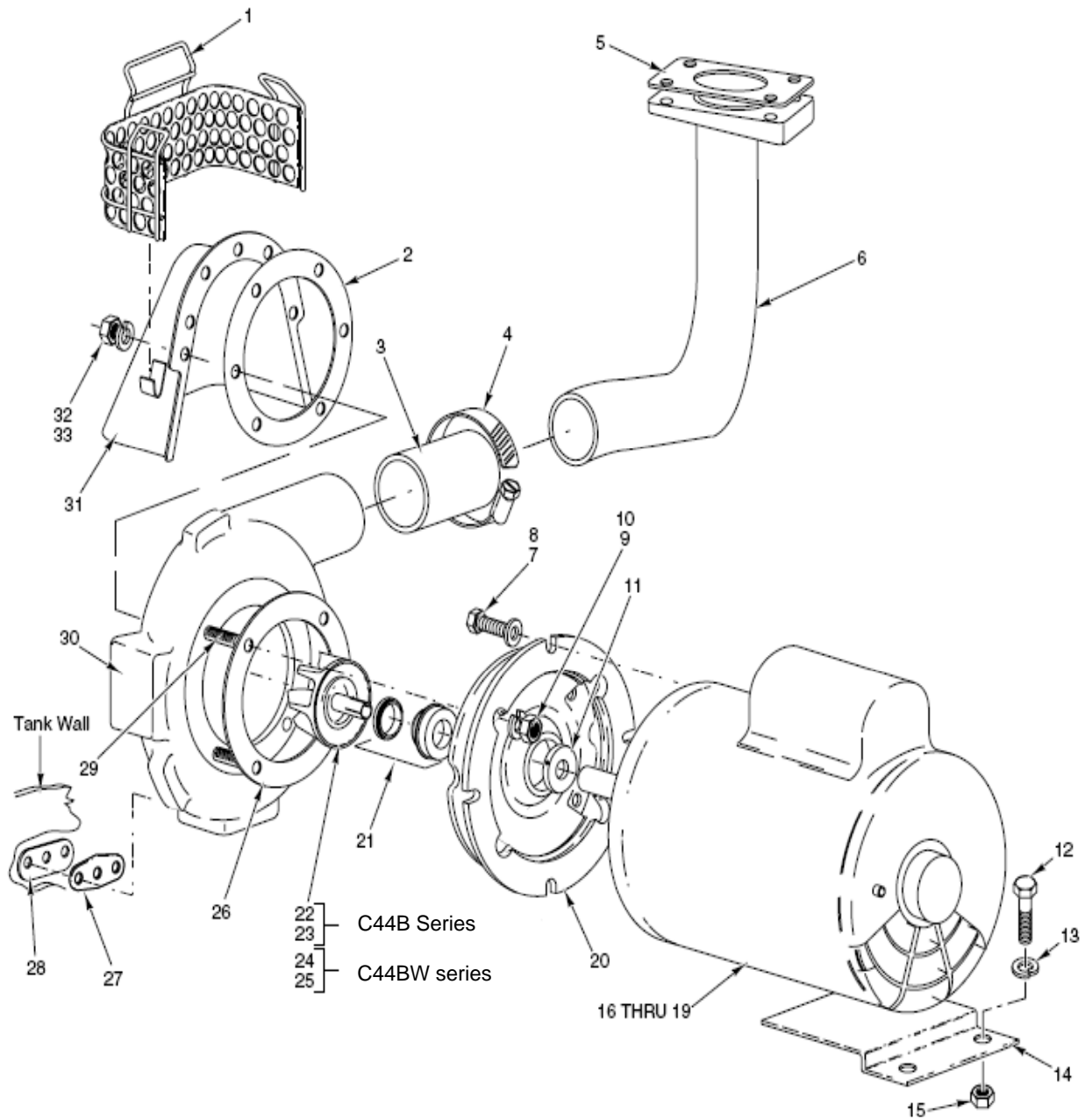
**C44B+ SERIES DISHWASHER REPLACEMENT PARTS**

---

**CONVEYOR DRIVE MOTOR**

<b>NO.</b>	<b>PART NO.</b>	<b>NAME OF PART</b>	<b>AMT</b>
1	328083	Coupling Motor	1
2	274228-2	Insert – Coupling Service (Love Joy)	1
3	7152027	Bracket-Motor	1
4	437044-1	Motor - Conveyor (200-230/460V,60Hz,3PH)	1
	437044-4	Motor - Conveyor (220/380V,50Hz,3PH)	1
5	274231-57	Key 3/16x3/16x11/8Lg	1
6	SCH-M6-8	Screw M6X8	1
7	742313	Braket Motor	1
8	271083	Spacer – Overload	1
9	436017	Bracket – Load	1
10	436952	Spring – Overload	1
11	WS-029-05	Washer 8	3
12	SC120-72	Cap Screw 5/16 – 18 x4 1/2 Hex Hd	1
13	270927	Pilot Bearing	1
14	742220	Bracket – Switch	1
15	87711-260	Switch – Interlock	1
16	742314	Actuator-Switch	1
17	NS-M6	Nut M6	1

**C44B+ SERIES DISHWASHER REPLACEMENT PARTS**

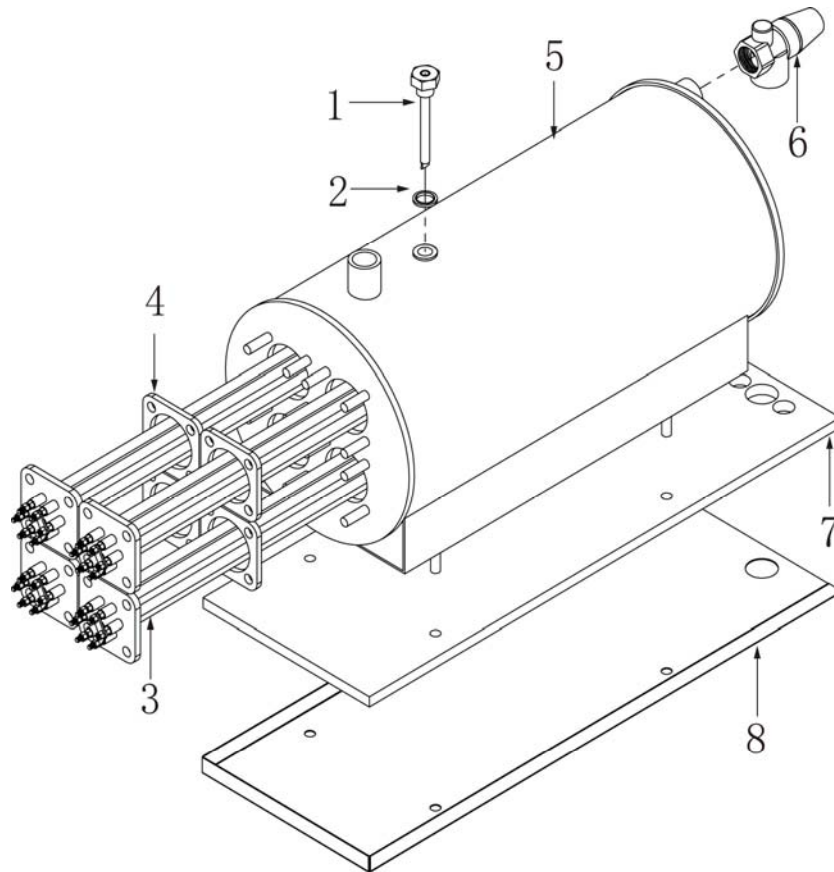


**Fig. 13 WASH MOTOR AND PUMP UNIT**

**C44B+ SERIES DISHWASHER REPLACEMENT PARTS**

**WASH MOTOR AND PUMP UNIT**

NO.	PART NO.	NAME OF PART	AMT
1	328362	Strainer-Pump	1
2	119050	Gasket	1
3	328215	Hose-Discharge	1
4	542337	Clamp-Hose	2
5	270968	Gasket- Washer Pipe	1
6	742304	Tube Discharge	1
7	SC-041-29	Cap Screw 3/8-16x7/8 Hex Hd	4
8	WS-006-44	Washer	4
9	WL-006-22	LockWasher 5/16 Light	4
10	NS-015-11	Nut 5/16-18 Hex	4
11	274227-2	Clamp	1
12	SC-041-05	Cap Screw 1/4-16x5/8 Hex Hd	2
13	WL-007-15	LockWasher 1/4	2
14	742218	Bracket Motor Support	1
15	NS-015-01	Nut 1/4-20 Hex	2
16	274230-1	Motor (1Ph,60Hz)(2HP)	1
17	274230-2	Motor (3Ph,60Hz)(2HP)	1
18	274230-3	Motor (1Ph,50Hz)(2HP)	1
19	274230-4	Motor (3Ph,50Hz)(2HP)	1
20	274227-3	Adapter	1
21	274227-6	Seal-Shaft	1
22	274227-7	Impeller&Sleeve(60Hz)	1
23	274227-10	Impeller&Sleeve(50Hz)	1
24	274227-12	Impeller&Sleeve(60Hz)	1
25	274227-7	Impeller&Sleeve(50Hz)	1
26	274227-4	Gasket	1
27	119051	Gasket.	2
28	812776	Panel	2
29	274227-5	Stud	AR
30	274227-1	Pump Shell	1
31	742303	Shroud	1
32	WL-006-23	LockWasher 5/16 Medium	10
33	NS-015-11	Nut 5/16-18 Hex	10
	270950-1	Pump(1ph,60hz)(2HP)(incls.items 7 thru 11,16,20,21,22,26&29)	1
	270950-2	Pump(3ph,60hz)(2HP)(incls.items 7 thru 11,17,20,21,22,26,28&29)	1
	<del>270950-3</del>	<del>Pump(1ph,50hz)(2HP)(incls.items 7 thru 11,18,20,21,22,26,28&amp;29)</del>	<del>1</del>
	270950-4	Pump(3ph,50hz)(2HP)(incls.items 7 thru 11,19,20,21,22,26,28&29)	1
	<del>270950-21</del>	<del>Pump(1ph,60hz)(2HP)(incls.items 7 thru 11,16,20,21,22,26,28&amp;29)</del>	<del>1</del>
	<del>270950-22</del>	<del>Pump(3ph,60hz)(2HP)(incls.items 7 thru 11,17,20,21,22,26,28&amp;29)</del>	<del>1</del>
	<del>270950-23</del>	<del>Pump(1ph,50hz)(2HP)(incls.items 7 thru 11,18,20,21,22,26,28&amp;29)</del>	<del>1</del>
	270950-4	Pump(3ph,50hz)(2HP)(incls.items 7 thru 11,19,20,21,22,26,28&29)	1
	<b>270950-24</b>		



**Fig. 14 BOOSTER ASSY**

**C44B+ SERIES DISHWASHER REPLACEMENT PARTS**

---

**BOOSTER ASSY**

<b>NO.</b>	<b>PART NO.</b>	<b>NAME OF PART</b>	<b>AMT</b>
1	7152070	Thermostat Sensor Tube	1
2	7155206	Seal Washer	1
3	743800-5	Heating Element	4
4	743800-10	Gasket	4
5	7152071	Barrel	1
6	743800-5	Safe Valve	1
7	7152073	Insulation	1
8	7152072	Water Care	1

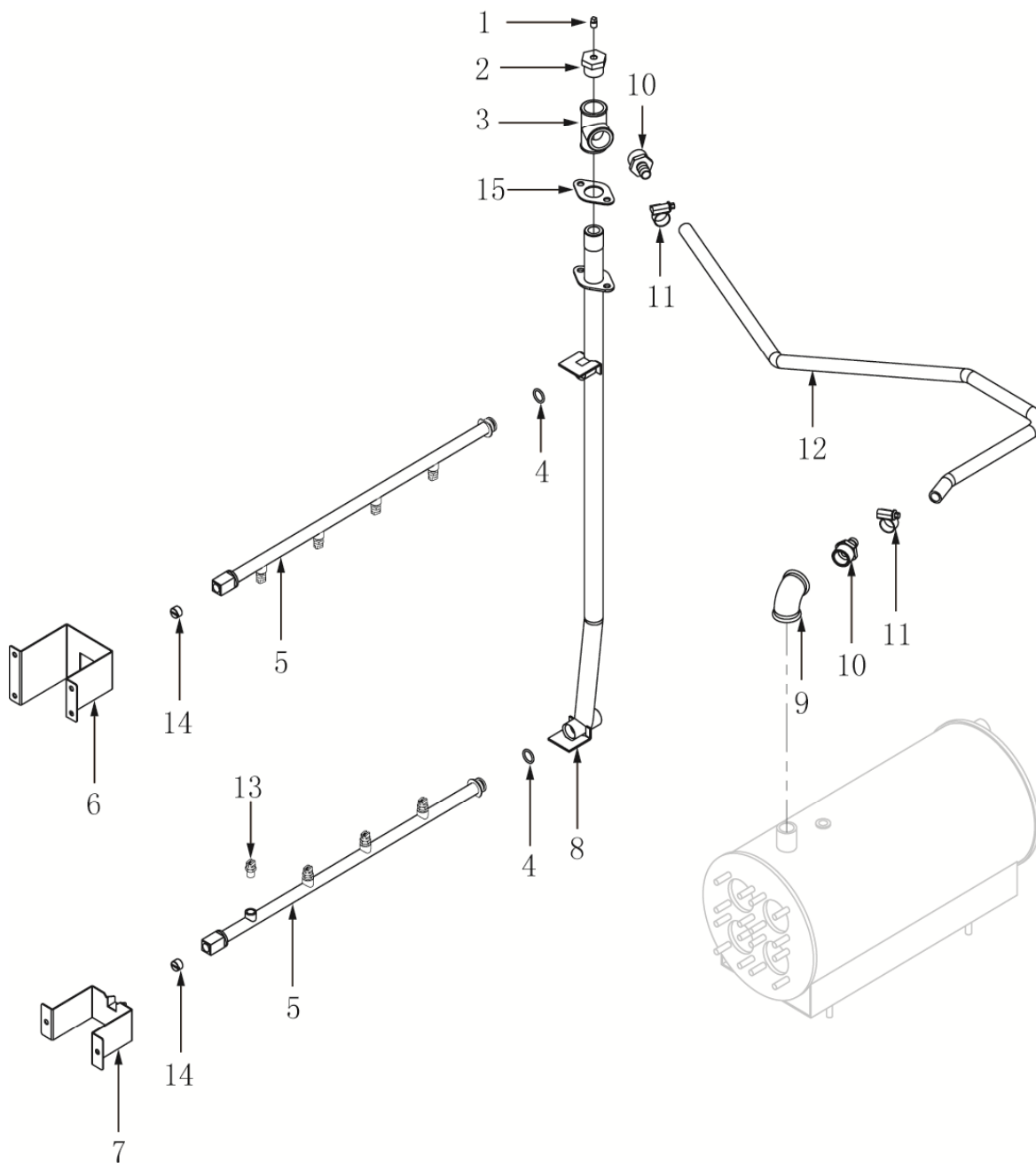


Fig. 15 RINSE SYSTEM R-L

## C44B+ SERIES DISHWASHER REPLACEMENT PARTS

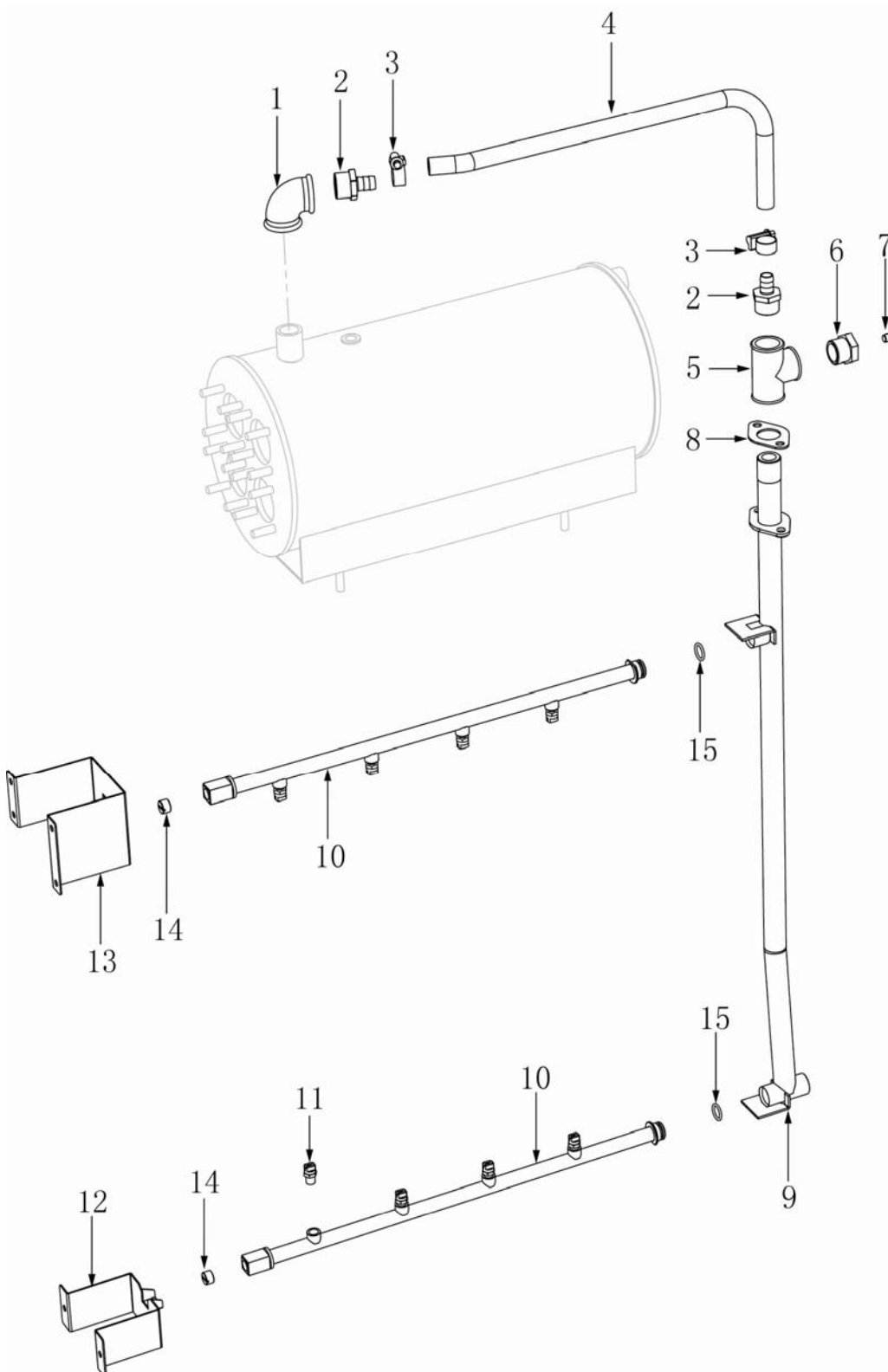
---

### RINSE SYSTEM R-L

NO.	PART NO.	NAME OF PART	AMT
1	FP-028-03	Plug	1
2	FP-084-56	Bushing	1
3	7155111-4	Tee	1
4	7155104-7	O Ring	2
5	7152062	Rinse Pipe	2
6	7152065	Holding Plate R-L	1
7	7152064	Holding Plate	1
8	7152061	Rinse Pipe Assy	1
9	743289	Elbow	1
10	743284	Elbow	2
11	743315	Hose Clamp 20	2
12	7152066	Hose <span style="border: 1px solid red; padding: 2px;">00-897293-01-1C 1125MM</span>	1
13	7152063	Nozzle	8
14	7155104-4	Plug	2
15	276407	Seal	1



**C44B+ SERIES DISHWASHER REPLACEMENT PARTS**



**Fig. 16 RINSE SYSTEM L-R**

**C44B+ SERIES DISHWASHER REPLACEMENT PARTS**

---

**RINSE SYSTEM L-R**

<b>NO.</b>	<b>PART NO.</b>	<b>NAME OF PART</b>	<b>AMT</b>
1	743289	Elbow	1
2	743284	Elbow	2
3	743315	Hose Clamp 20	2
4	7452066L	Hose L-R <span style="border: 1px solid red; padding: 2px;">00-897293-01-2C 480MM</span>	1
5	7155111-4	Tee	1
6	FP-084-56	Bushing	1
7	FP-028-03	Plug	1
8	276407	Seal	1
9	7152061L	Rinse Pipe Assy L-R	1
10	7152062	Rinse Pipe	2
11	7152063	Nozzle	8
12	7152064	Holding Plate	1
13	7152065L	Holding Plate L-R	1
14	7155104-4	Plug	2
15	7155104-7	O Ring	2

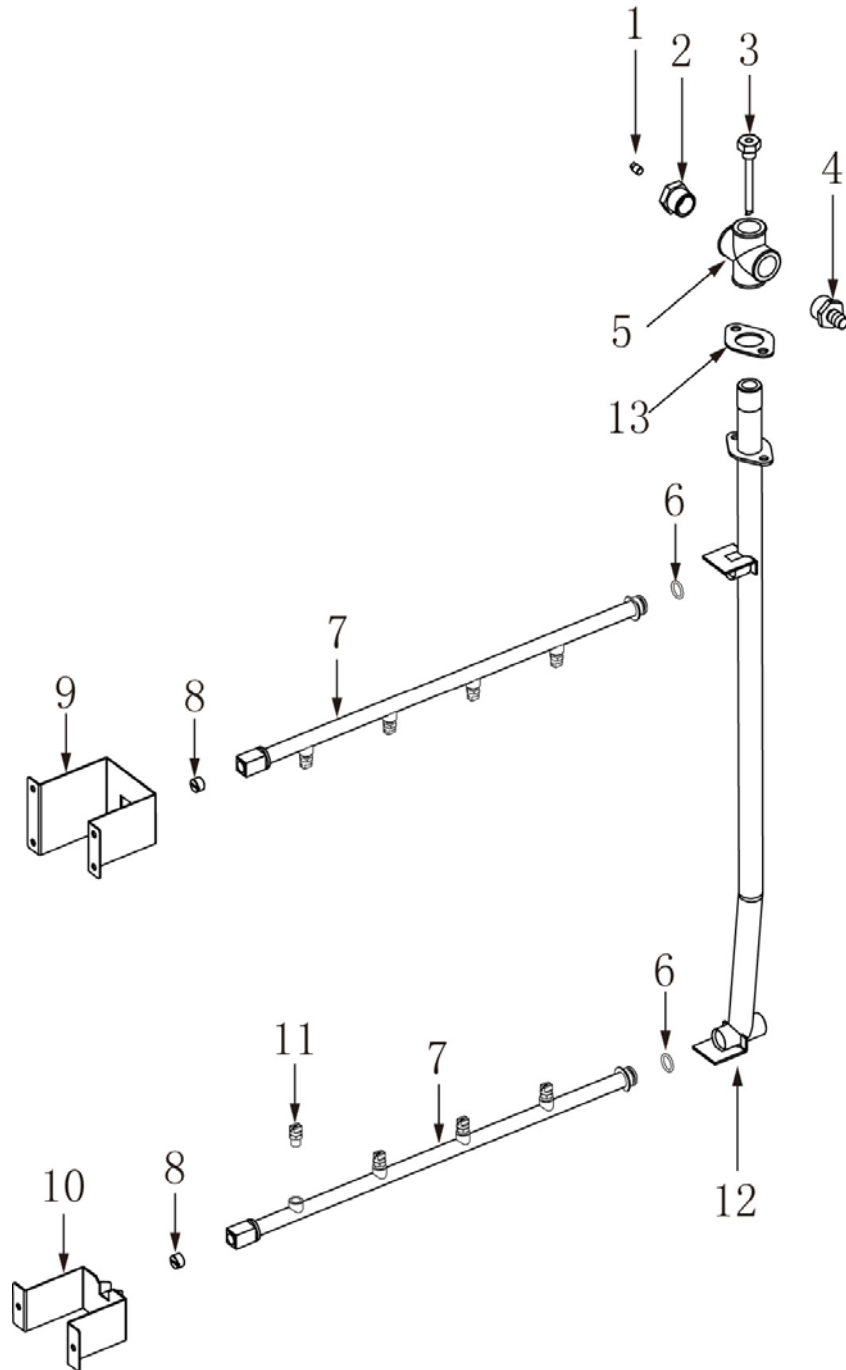


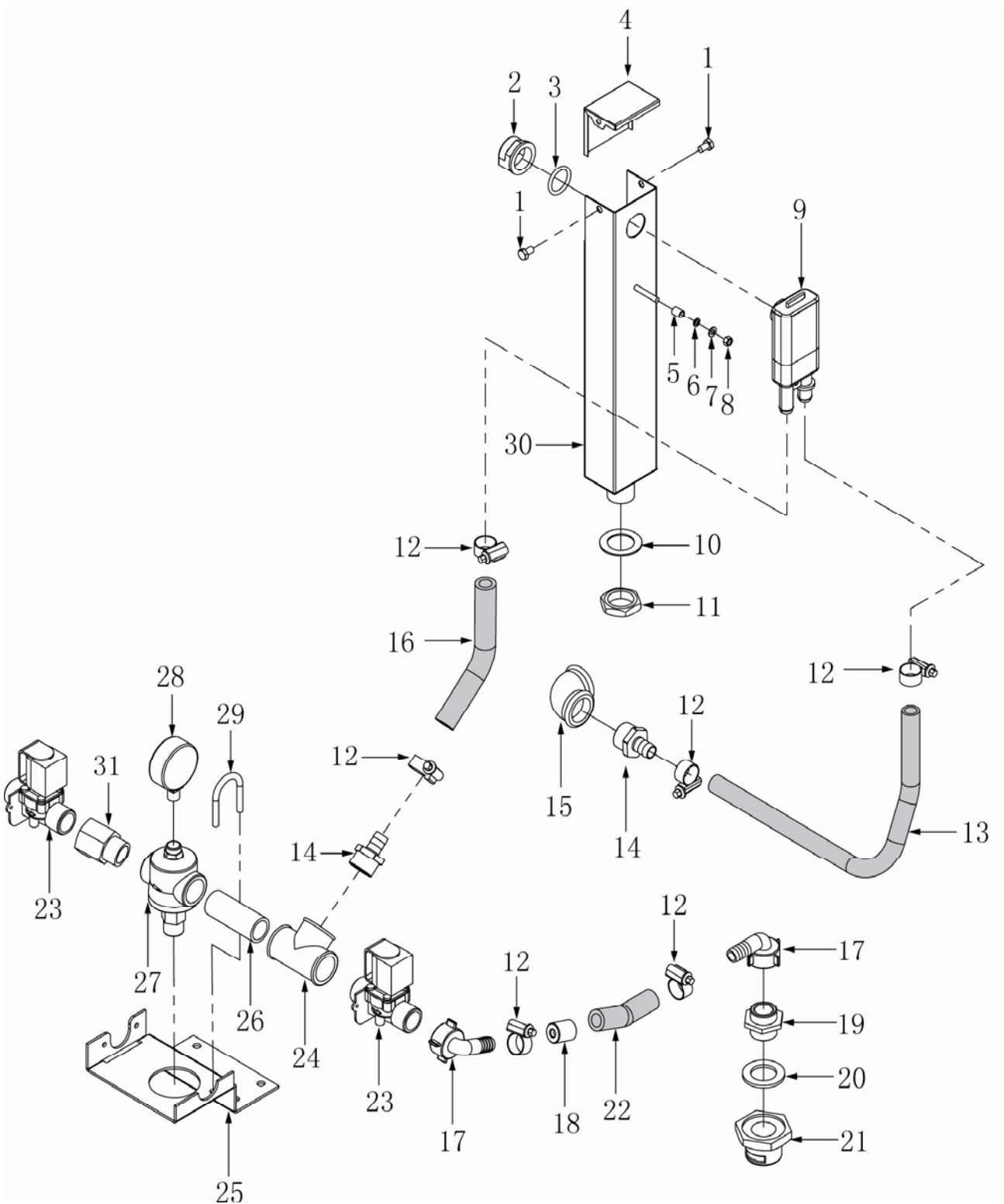
Fig.17 RINSE SYSTEM (WITHOUT BOOSTER)

**C44B+ SERIES DISHWASHER REPLACEMENT PARTS**

---

**RINSE SYSTEM(WITHOUT BOOSTER) R-L**

<b>NO.</b>	<b>PART NO.</b>	<b>NAME OF PART</b>	<b>AMT</b>
1	FP-028-03	Plug	1
2	FP-084-56	Bushing	1
3	7159141-3	Temperature Tube	1
4	743284	Elbow	1
5	7159140-1	Cross Tee	1
6	7155104	O Ring	2
7	7152062	Rinse Pipe	2
8	7155104-4	Plug	2
9	7152065	Holding Plate R-L	1
	7152065L	Holding Plate L-R	1
10	7152064	Holding Plate	1
11	7152063	Nozzle	8
12	7152061	Rinse Pipe Assy R-L	1
	7152061L	Rinse Pipe Assy L-R	1
13	276407	Seal	1

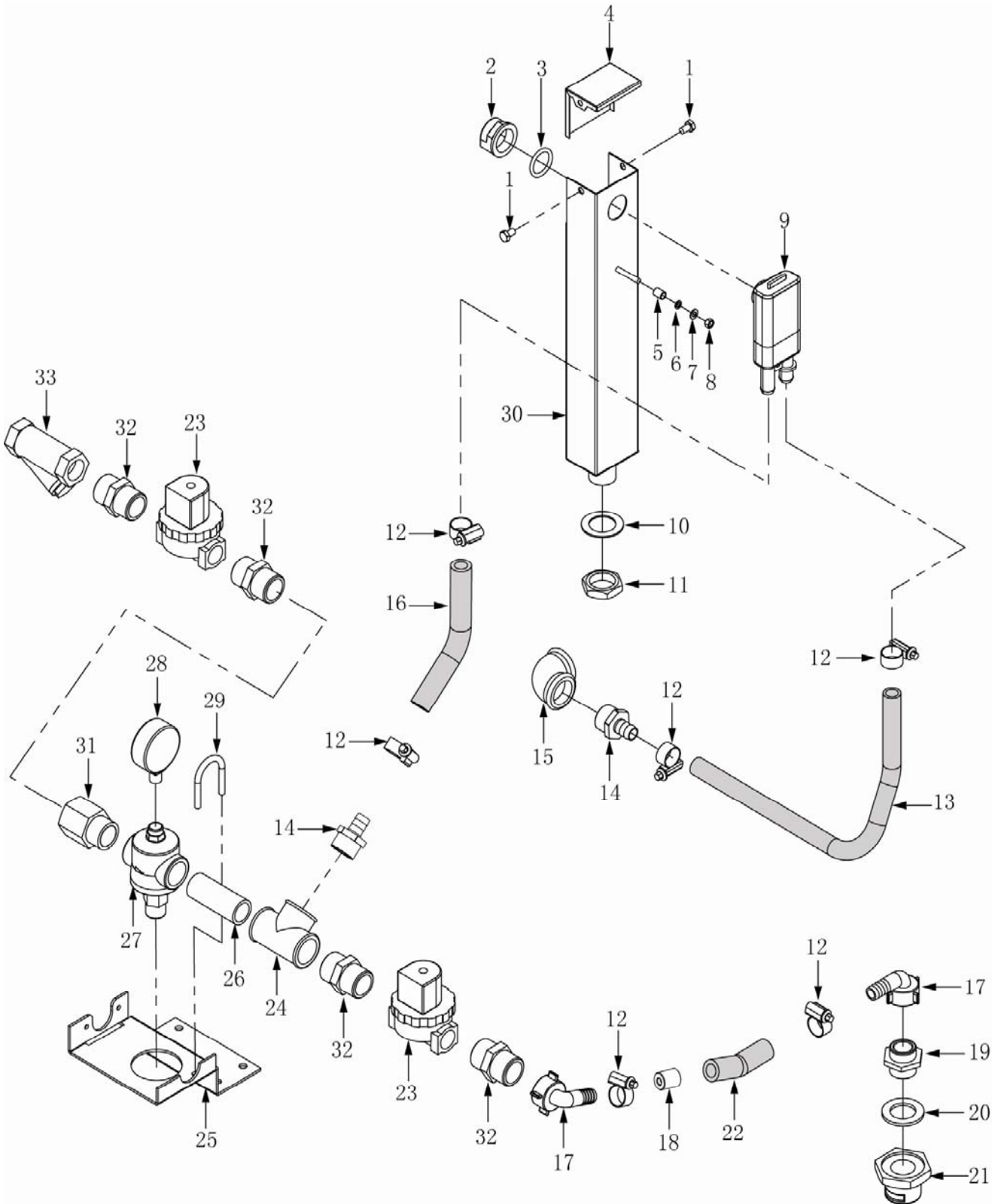


**Fig. 18 FILLING SYSTEM (WITH BOOSTER)**

**C44B+ SERIES DISHWASHER REPLACEMENT PARTS****FILLING SYSTEM (WITH BOOSTER)**

<b>NO.</b>	<b>PART NO.</b>	<b>NAME OF PART</b>	<b>AMT</b>
1	SCH-M5-10	Nut	2
2	324183	Air Gap Nut	1
3	67500-10	O Ring	1
4	7152016-4	Cover	1
5	743280	Tube	1
6	WL-M5	Lock Washer	1
7	WS-M5	Washer	1
8	NS-M5	Nut	1
9	775759-1	Air Gap	1
10	WS-13-45	Washer	1
11	7155303-10	Lock Nut	1
12	743315	Hose Clamp	6
13	7152068-4	Outlet Hose <b>00-897293-01-6C 420MM</b>	1
14	743284	Union	2
15	743289	Elbow	1
16	7152068-2	Inlet Hose <b>00-897293-01-5C 165MM</b>	1
17	00-299240-001	Elbow	2
18	7159136-2	Throttle	1
19	00-227931-000	Nipple	1
20	7159145-1	O Ring	1
21	00-774670-001	Cover Nut	1
22	7152068-3	Hose <b>00-897293-01-7C 85MM</b>	1
23	00-297808-013	Magnetic Valve	2
24	7155315-4	Tee	1
25	7152068-1	Holding Plate	1
26	7155111-2	Tube	1
27	7155314-3	Valve	1
28	328247	Pressure Gauge	1
29	743909	U Clamp	1
30	7152016-3	Pipe Assy	1
31	7155122	Nipple	1

**C44B+ SERIES DISHWASHER REPLACEMENT PARTS**



**Fig. 19 FILLING SYSTEM 2 (WITH BOOSTER)**

**C44B+ SERIES DISHWASHER REPLACEMENT PARTS**

**FILLING SYSTEM 2 (WITH BOOSTER)**

NO.	PART NO.	NAME OF PART	AMT
1	SCH-M5-10	Nut	2
2	324183	Air Gap Nut	1
3	67500-10	O Ring	1
4	7152016-4	Cover	1
5	743280	Tube	1
6	WL-M5	Lock Washer	1
7	WS-M5	Washer	1
8	NS-M5	Nut	1
9	775759-1	Air Gap	1
10	WS-13-45	Washer	1
11	7155303-10	Lock Nut	1
12	743315	Hose Clamp	6
13	7152068-4	Outlet Hose <b>00-897293-01-6C 420MM</b>	1
14	743284	Union	2
15	743289	Elbow	1
16	7152068-2	Inlet Hose <b>00-897293-01-5C 165MM</b>	1
17	01-510685-001	Elbow	2
18	7159136-2	Throttle	1
19	00-227931-000	Nipple	1
20	7159145-1	O Ring	1
21	00-774670-001	Cover Nut	1
22	00-897293-001-8C	Hose <b>00-897293-01-7C 85MM</b>	1
23	749980	Magnetic Valve	2
24	7155315-4	Tee	1
25	7152068-1	Holding Plate	1
26	7155111-2	Tube	1
27	7155314-3	Valve	1
28	328247	Pressure Gauge	1
29	743909	U Clamp	1
30	7152016-3	Pipe Assy	1
31	7155122	Nipple	1
32	743286	Nipple	4
33	743287	Strainer	1



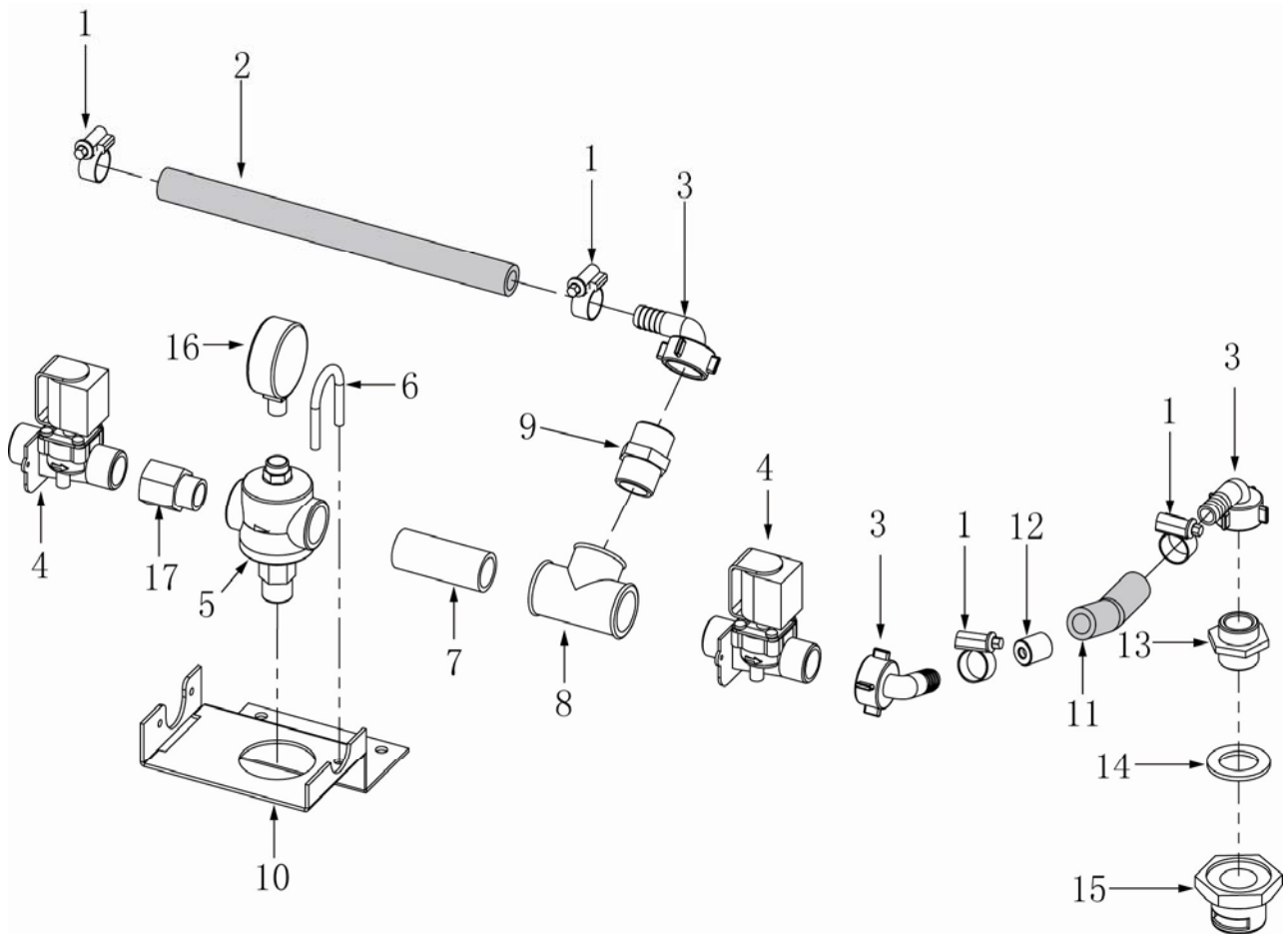


Fig. 19 FILLING SYSTEM (WITHOUT BOOSTER)

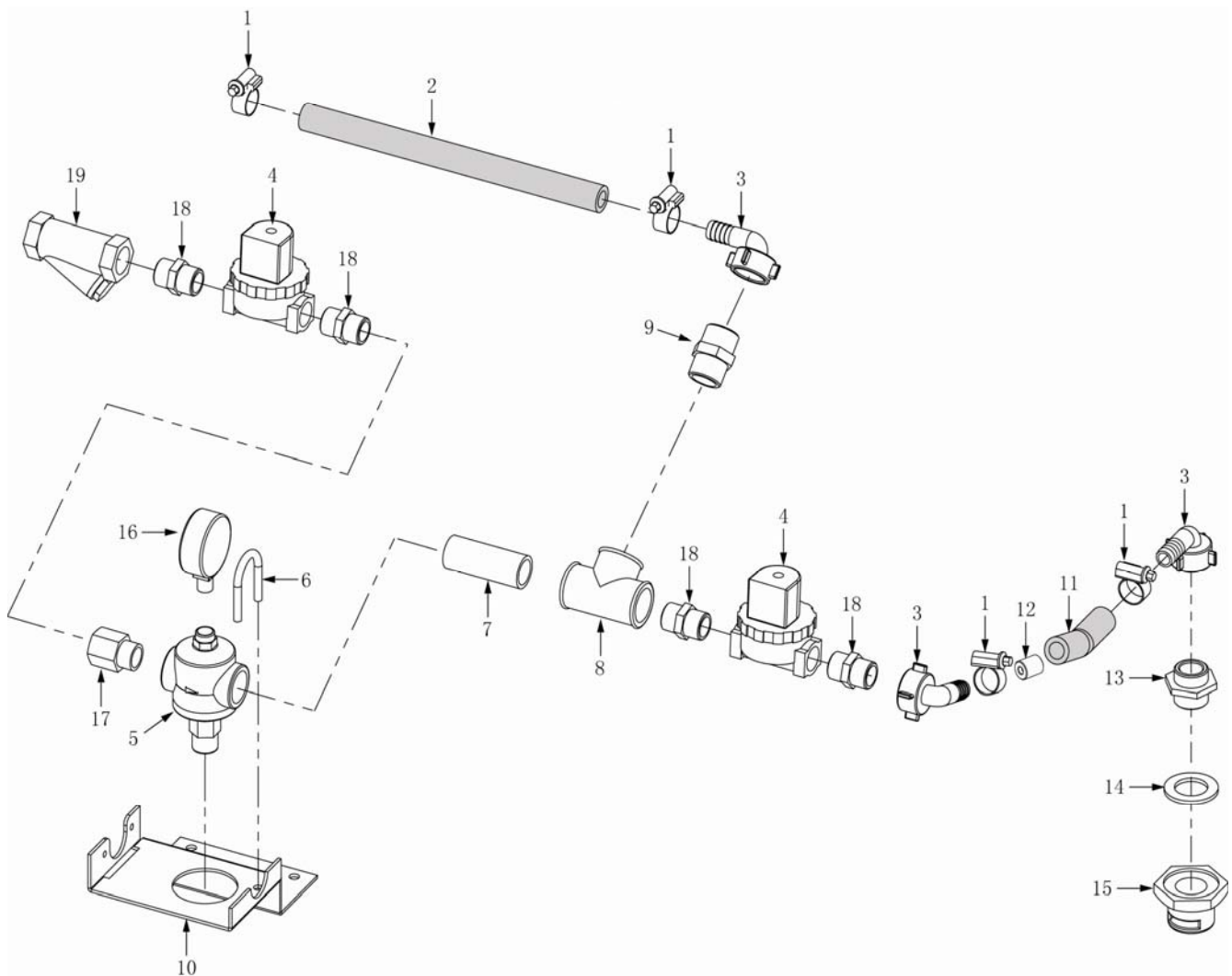
**C44B+ SERIES DISHWASHER REPLACEMENT PARTS**

---

**FILLING SYSTEM (WITHOUT BOOSTER)**

<b>NO.</b>	<b>PART NO.</b>	<b>NAME OF PART</b>	<b>AMT</b>
1	743315	Hose Clamp	4
2	7152067	Inlet Hose R-L 00-897293-01-3C 540MM	1
	7152067L	Inlet Hose L-R 00-897293-01-4C 260MM	1
3	00-299240-001	Elbow	2
4	00-297808-013	Magnetic Valve	2
5	7155314-3	Valve	1
6	743909	U Clamp	1
7	7155111-2	Tube	1
8	7155315-4	Tee	1
9	743286	Nipple	1
10	7152068-1	Holding Plate	1
11	7152068-3	Hose 00-897293-001-7C 85MM	1
12	7159136-2	Throttle	1
13	00-227931-000	Nipple	1
14	7159145-1	O Ring	1
15	00-774670-001	Cover Nut	1
16	328247	Pressure Gauge	1
17	7155122	Nipple	1

# C44B+ SERIES DISHWASHER REPLACEMENT PARTS



**Fig. 19 FILLING SYSTEM 2 (WITHOUT BOOSTER)**

**C44B+ SERIES DISHWASHER REPLACEMENT PARTS**

---

**FILLING SYSTEM 2 (WITHOUT BOOSTER)**

<b>NO.</b>	<b>PART NO.</b>	<b>NAME OF PART</b>		<b>AMT</b>
1	743315	Hose Clamp		4
2	7152067	Inlet Hose R-L	00-897293-01-3C 540MM	1
	7152067L	Inlet Hose L-R	00-897293-01-4C 260MM	1
3	01-510685-001	Elbow		2
4	749980	Magnetic Valve		2
5	7155314-3	Valve		1
6	743909	U Clamp		1
7	7155111-2	Tube		1
8	7155315-4	Tee		1
9	743286	Nipple		1
10	7152068-1	Holding Plate		1
11	00-897293-001-8C	Hose	00-897293-001-7C 85MM	1
12	7159136-2	Throttle		1
13	00-227931-000	Nipple		1
14	7159145-1	O Ring		1
15	00-774670-001	Cover Nut		1
16	328247	Pressure Gauge		1
17	7155122	Nipple		1
18	743286	Nipple		4
19	743287	Strainer		1