

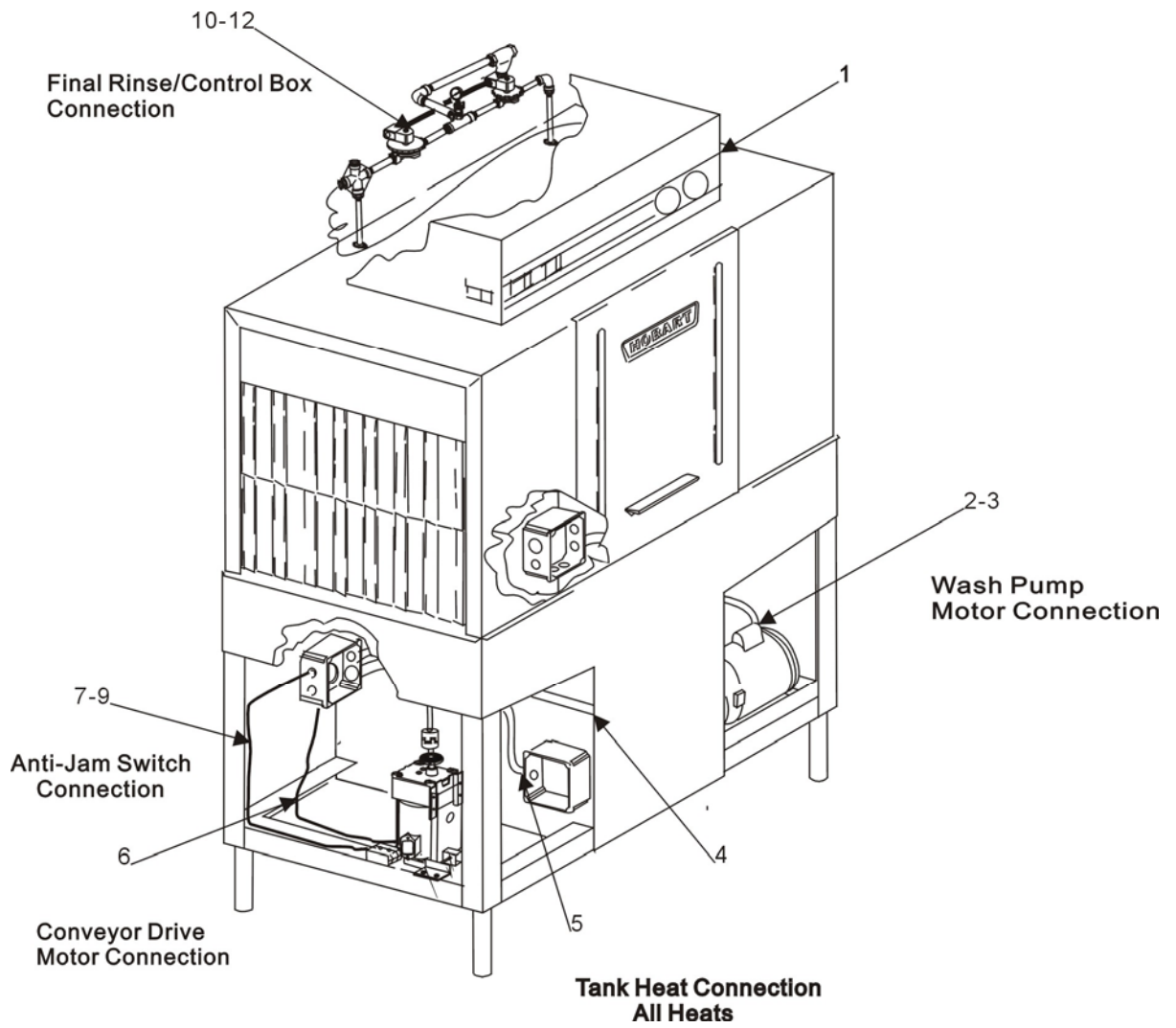


**CATALOG OF
REPLACEMENT PARTS**

**MODEL C44B & C44BW SERIES
DISHWASHERS**

Table of Contents

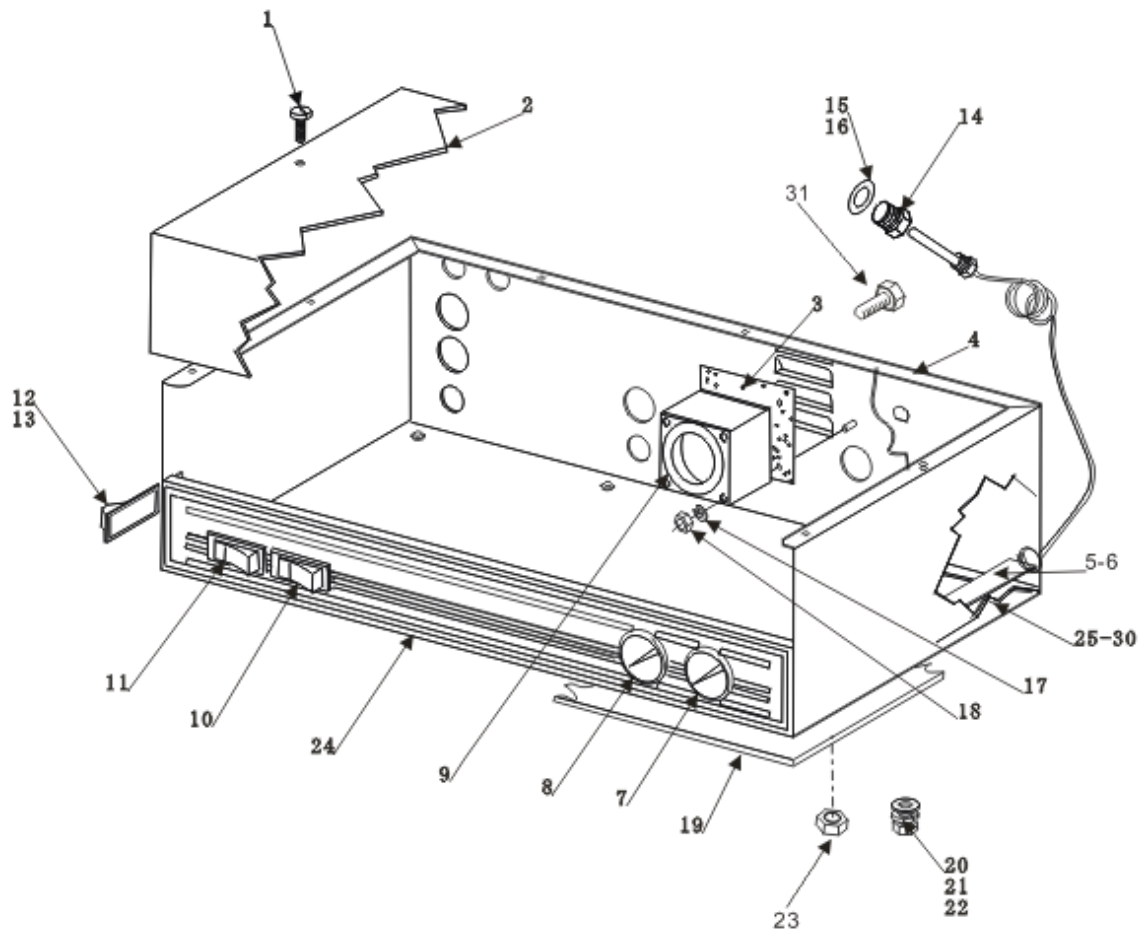
Page	Description
3	Conduit-Waterproof
5	Control Box
7	Component Panel (Control Box) 120V Pilot Circuit (V2)
9	Component Panel (Control Box) 120V Pilot Circuit (V0)
11	Component Panel (Control Box) 120V Pilot Circuit(V1)
12	Wash Motor And Pump Unit
15	Conveyor Drive Unit (C44B&BW Series – 1/6 HP)
17	Conveyor Drive Train
19	Tracks and Cradle (Wash Section)
21	Wash Arms and Tubes (Wash Section)
23	Fill and Outside Rinse Piping
25	Inside Metallic Rinse Piping
27	Actuator Mechanisms and Rinse Drain- Off Pan
29	Drain Unit (Wash Section)
31	Door, Curtain, Baffles and Strainers
33	Miscellaneous (Wash Section)
35	Low Water Protection (Steam Heat/Wash Tank)
37	Steam Injector Heat
39	Electric Heat



CONDUIT-WATERPROOF

CONDUIT-WATERPROOF

ILLUS.	PART	NAME OF PART	AMT
1	274993	Label.....	1
2	FE-024-57	Connector (O Ring& Lock nut) 1/2inch.....	4
3	FE-024-58	Connector (O Ring& Lock nut) 3/4 in.....	2
4	FE-024-58	Connector (O Ring& Lock nut) 3/4 in.....	2
5	FE-024-59	Connector 1 in.....	2
6	FE-024-57	Connector (O Ring& Lock nut) 1/2inch.....	2
7	FE-022-84	Plastic Connector.....	1
8	FE-024-88	Lock Nut.....	1
9	FE-009-07	Lock Nut.....	2
10	FE-024-5	Connector (O Ring& Lock nut) 1/2inch.....	2
11	FE-024-65	90°Connector (1/2 Male Thd. x1/2Flex Cnd).....	1
12	543430	1/2" Wire Tube.....	1
	543431	3/4" Wire Tube.....	1
	543432	1" Wire Tube.....	1

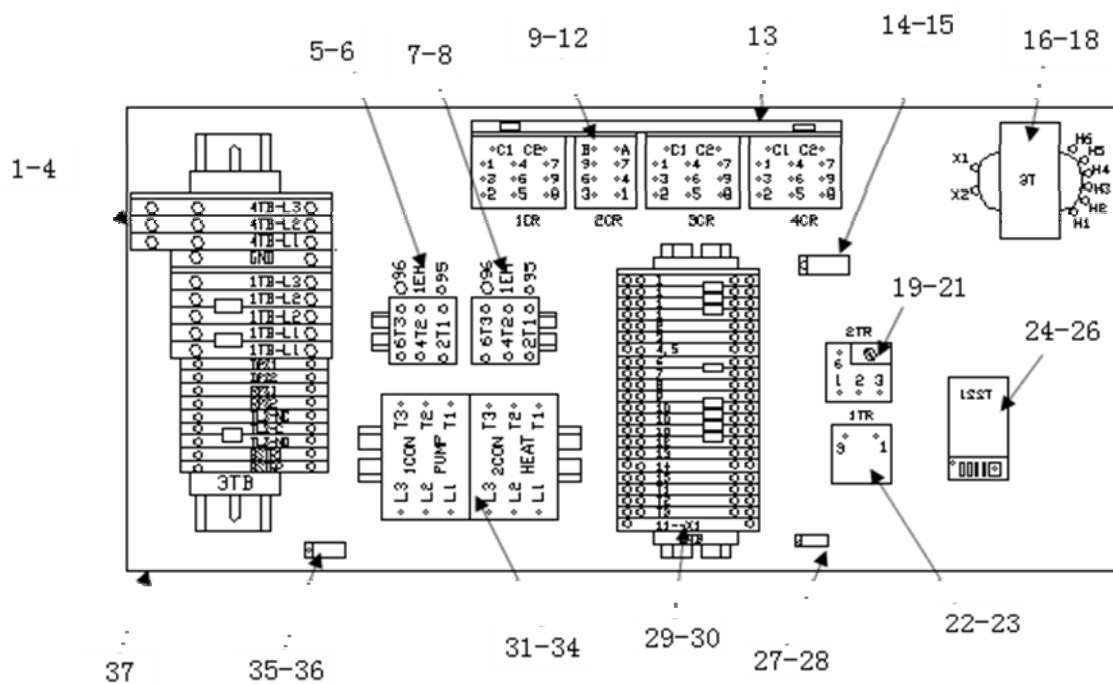


CONTROL BOX

CONTROL BOX

ILLUS.	PART	NAME OF PART	AMT
1	SC-053-05	Screw.....	2
2	742328	Cover-Control Box.....	1
3	742194	Guard-Fan.....	1
4	742327	Control Box.....	1
5	742172	Shield.....	1
6	SD-008-25	Self-Tapping Screw 10-16 x 1/2 Phil. Pan Hd., Type B.....	1
7	437041-3	Thermometer (8 Ft.)(Rinse).....	1
8	437041-4	Thermometer (11 Ft.)(Wash).	1
9	355504-1	Fan (115V).....	1
10	87711-228-1	Switch – Rocker (Motor On/Off).....	1
11	87711-198-1	Switch - Rocker (Power On/Off)(115V).....	1
12	87711-241-1	Switch - Rocker (On/Off)(Conveyor Dwell).....	1
13	473520	Label.....	1
14	107218	Coupling – Thermometer Bulb.....	3
15	FP-053-05	Pipe Locknut 1/2 NPSL (SST).....	3
16	WS-012-40	Washer.....	4
17	WL-006-42	Lockwasher #6 Medium.....	3
18	NS-011-07	Mash. Nut 6-32 Hex.....	3
19	435072	Panel-control box.....	1
20	435072	Gasket.....	1
21	WS-022-01	Washer.....	6
22	WL-006-17	Lockwasher 1/4 Medium.....	6
23	NS-031-09	Mash. Nut	6
24	473521	Panel.....	1
25	F-11993	Label.....	1
26	F-13334	Label.....	1
27	F-17689	Label.....	1
28	F-13117	Label.....	1
29	F-13118	Label.....	1
30	F-18192	Label.....	1
31	SCH-M5-16	Screw M5*16.....	4

● items 20,21 and 22 are replaced by item 23

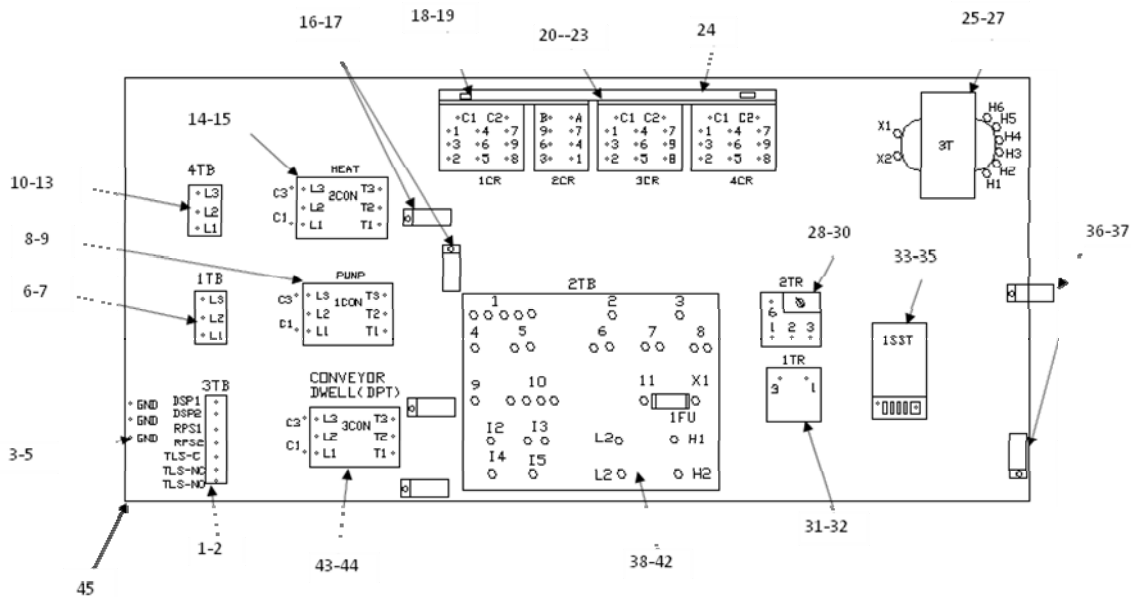


COMPONENT PANEL(V2)

(CONTROL BOX)
120V. PILOT CIRCUIT

COMPONENT PANEL(V2)
(CONTROL BOX)
120V. PILOT CIRCUIT

ILLUS.	PART	NAME OF PART	AMT
1	294325-C1	Junction Line (C44B).....	1
2	SD-008-25	Self – Trapping Screw 10-16 × 1/2 Phil. Pan Hd., type B.....	2
3	294325-C3	Junction Line (C44BS).....	1
4	294325-C4	Junction Line (C44B, 1Ph).....	1
5	7152036	Relay (Conveyor Motor).....	1
6	SD-008-25	Self – Trapping Screw 10-16 × 1/2 Phil. Pan Hd., type B.....	2
7	7152044	Relay (Pump).....	1
8	7152047	Rail.....	1
9	SD-008-25	Self – Trapping Screw 10-16 × 1/2 Phil. Pan Hd., type B.....	4
10	205113-1	Relay 3PDT (1CR, 3CR & 4CR).....	3
11	SD-019-29	Self – Trapping Screw 6-20 × 1/2 Phil. Pan Hd., type B.....	8
12	87714-007-2	Relay-D.P.D.T (115V) (2CR).....	1
13	742034	Stator - Relay.....	1
14	SD-008-25	Self – Trapping Screw 10-16 × 1/2 Phil. Pan Hd., type B.....	1
15	294677-5	Clamp - wire (I.D36mm).....	1
16	294500-024-2	Transformer (300V).....	1
17	SD-019-29	Self – Trapping Screw 6-20 × 1/2 Phil. Pan Hd., type B.....	4
18	WL-014-07	Lockwasher.....	4
19	87714-36	Time Delay Relay.....	1
20	437070-1	Plug On Module.....	1
21	SD-036-13	Self – Trapping Screw 1/4- 20 × 1 1/4 Hex Washer Hd. Type T.....	1
22	87714-031-2	Relay Time Delay (5 Sec.).....	1
23	SD-036-13	Self – Trapping Screw 1/4- 20 × 1 1/4 Hex Washer Hd. Type T.....	2
24	475458-1	Thermostat-Solid State.....	2
25	476653	Nylon Tray.....	8
26	SC-098-07	Mach. Screw 4-40 x1 3/4 Rd. Hd. (SST).....	6
27	SD-008-25	Self – Trapping Screw 10-16 × 1/2 Phil. Pan Hd., type B.....	1
28	294677-3	Clamp - wire (I.D18mm).....	1
29	294676-C	Junction Line.....	1
30	SD-008-25	Self – Trapping Screw 10-16 × 1/2 Phil. Pan Hd., type B.....	2
31	7112011	40A contactor.....	1
32	SD-008-25	Self – Trapping Screw 10-16 × 1/2 Phil. Pan Hd., type B.....	2
33	7112002	30A contactor.....	2
34	743416	Rail-Contactor Mounting.....	1
35	294677-4	Clamp - wire (I.D24mm).....	3
36	SD-008-25	Self – Trapping Screw 10-16 × 1/2 Phil. Pan Hd., type B.....	3
37	742206	Base Plate.....	1



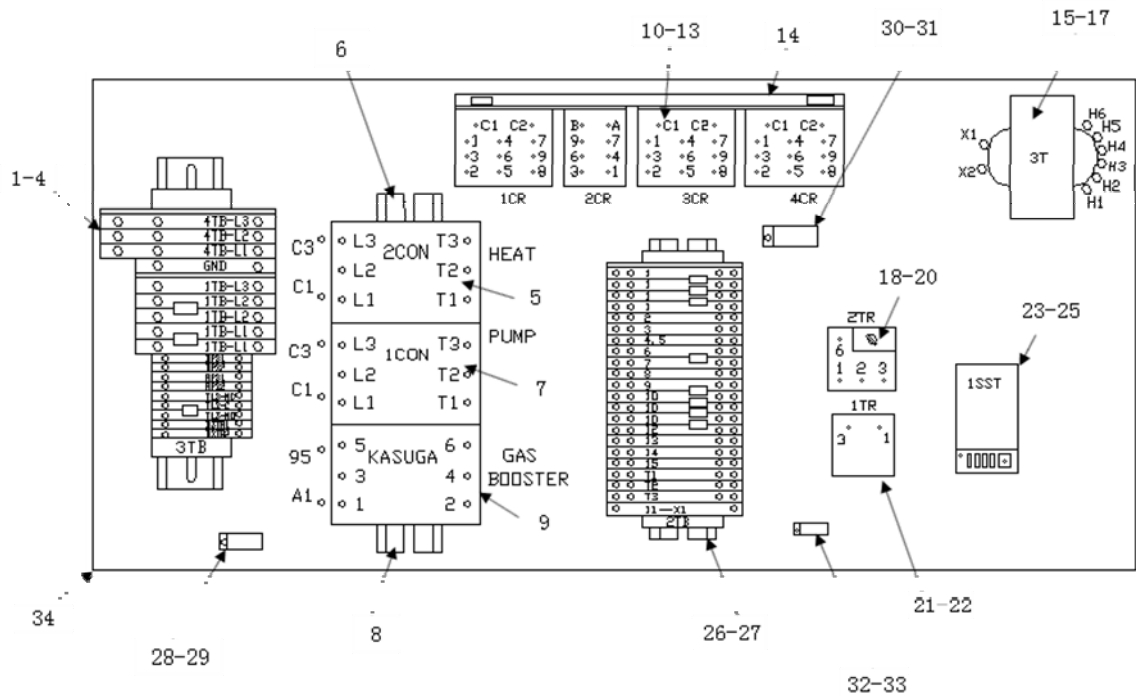
**COMPONENT PANEL (V0)
(CONTROL BOX)
120V. PILOT CIRCUIT**

**COMPONENT PANEL (V0)
(CONTROL BOX)
120V. PILOT CIRCUIT**

序号	零件号	名称	单台用量
1	294325-013-4	Junction Line	1
2	SD-008-25	Self - Trapping Screw 10-16 × 1/2 Phil. Pan Hd., type B.....	2
3	118544-00002	Grounding.....	3
4	SD-035-77	Self - Trapping Screw 1/4-20 x 3/8 Phil. Pan Hd., type B.....	3
5	WL-007-15	Washer 1/4.....	1
6	294325-015-1	Junction Line.....	1
7	SD-037-21	Self - Trapping Screw 8-32 x 1 Phil. Pan Hd., type B.....	2

C44B & C44BW SERIES DISHWASHER REPLACEMENT PARTS

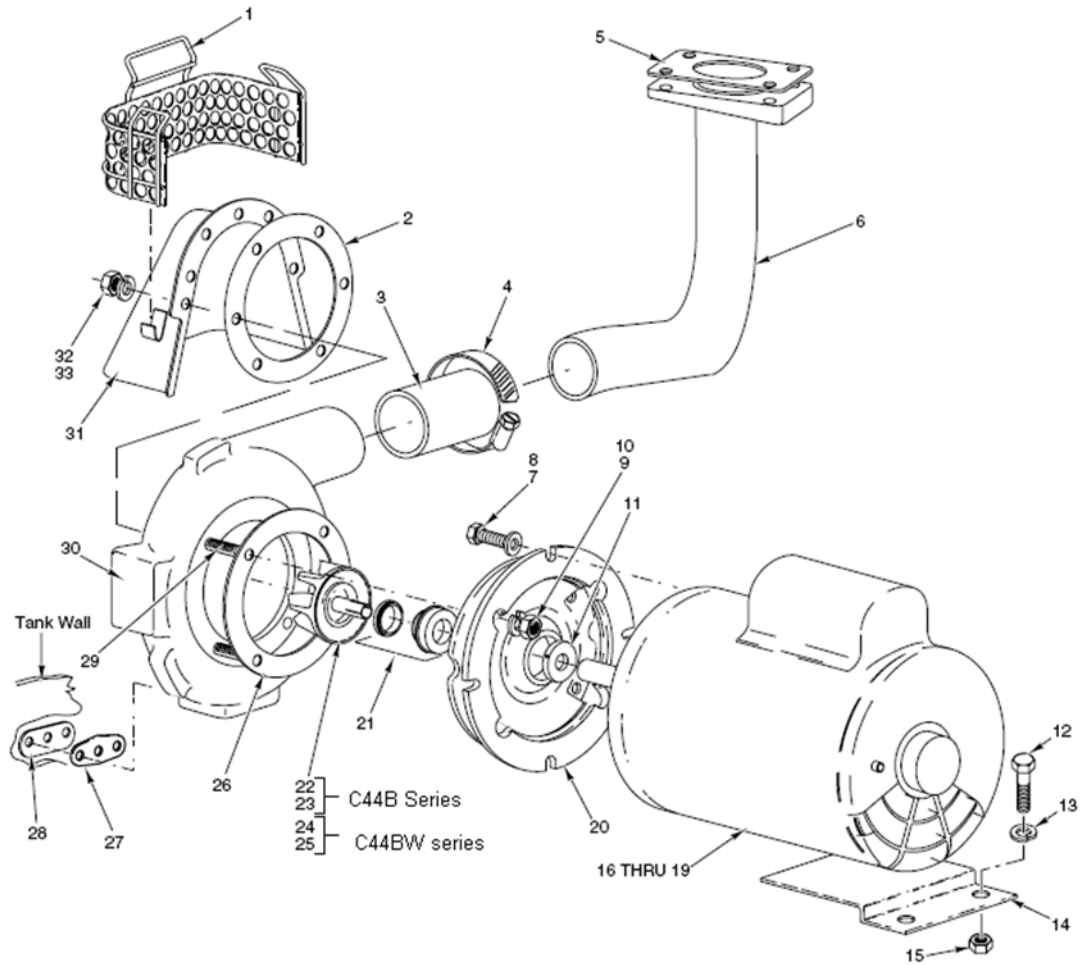
8	087713-041-2	40A contactor.....	2
9	SD-008-25	Self – Trapping Screw 10-16 × 1/2 Phil. Pan Hd., type B.....	2
10	294325-015-1	Junction Line.....	1
11	294325-004-1	Junction Line.....	1
12	SD-037-21	Self – Trapping Screw 8-32 x 1 Phil. Pan Hd., type B.....	2
13	SD-008-36	Self – Trapping Screw 8-18×7/8 Phil. Pan Hd., type B.....	2
14	087713-041-2	40A contactor.....	1
15	SD-008-25	Self – Trapping Screw 10-16 × 1/2 Phil. Pan Hd., type B.....	2
16	294677-5	Clamp - wire (I.D36mm).....	1
17	SD-008-25	Self – Trapping Screw 10-16 × 1/2 Phil. Pan Hd., type B.....	1
18	294677-4	Clamp - wire (I.D24mm).....	3
19	SD-008-25	Self – Trapping Screw 10-16 × 1/2 Phil. Pan Hd., type B.....	3
20	SD-008-25	Self – Trapping Screw 10-16 × 1/2 Phil. Pan Hd., type B.....	4
21	205113-1	Relay 3PDT (1CR, 3CR & 4CR).....	3
22	SD-019-29	Self – Trapping Screw 6-20 × 1/2 Phil. Pan Hd., type B.....	8
23	87714-007-2	Relay-D.P.D.T (115V) (2CR).....	1
24	742034	Stator - Relay.....	1
25	294500-024-2	Transformer (300V).....	1
26	SD-008-25	Self – Trapping Screw 10-16 × 1/2 Phil. Pan Hd., type B.....	4
27	WL-014-07	Lock washer.....	4
28	87714-36	Time Delay Relay.....	1
29	437070-1	Plug On Module.....	1
30	SD-036-13	Self – Trapping Screw 1/4- 20 × 1 1/4 Hex Washer Hd. Type T.....	1
31	87714-031-2	Relay Time Delay (5 Sec.).....	1
32	SD-036-13	Self – Trapping Screw 1/4- 20 × 1 1/4 Hex Washer Hd. Type T.....	2
33	475458-1	Thermostat-Solid State.....	2
34	476653	Nylon Tray.....	8
35	SC-098-07	Screw.....	6
36	294677-3	Clamp - wire (I.D18mm).....	1
37	SD-008-25	Self – Trapping Screw 10-16 × 1/2 Phil. Pan Hd., type B.....	1
38	FE-022-39	Fuse (1.5 Amp.) (250 V.)	1
39	FE-021-19	Fuse (3.2 Amp.) (125 V.)	1
40	FE-023-25	Fuse (5 Amp.) (125 V.)	1
41	00-294676	PCB.....	1
42	SD-008-18	Self – Trapping Screw 8-18 x3/8 Phil. Pan Hd., type B	4
43	087713-041-2	40A Contactor.....	1
44	SD-008-25	Self – Trapping Screw 10-16 × 1/2 Phil. Pan Hd., type B.....	2
45	742206	Base Board.....	1



**COMPONENT PANEL (V1)
(CONTROL BOX)
120V. PILOT CIRCUIT**

COMPONENT PANEL (V1)
(CONTROL BOX)
120V. PILOT CIRCUIT

序号	零件号	名 称	单台 用量
1	294325-C1	Junction Line (C44B).....	1
2	SD-008-25	Self – Trapping Screw 10-16 × 1/2 Phil. Pan Hd., type B.....	2
3	294325-C3	Junction Line (C44BS).....	1
4	294325-C4	Junction Line (C44B, 1Ph).....	1
5	7112011	40A contactor.....	1
6	SD-008-25	Self – Trapping Screw 10-16 × 1/2 Phil. Pan Hd., type B.....	2
7	7112002	30A contactor.....	2
8	743416	Rail.....	1
9	7122001	contactor(For Japanese machines).....	1
10	SD-008-25	Self – Trapping Screw 10-16 × 1/2 Phil. Pan Hd., type B.....	4
11	205113-1	Relay 3PDT (1CR, 3CR & 4CR).....	3
12	SD-019-29	Self – Trapping Screw 6-20 × 1/2 Phil. Pan Hd., type B.....	8
13	87714-007-2	Relay-D.P.D.T (115V) (2CR).....	1
14	742034	Stator - Relay.....	1
15	294500-024-2	Transformer (300V).....	1
16	SD-008-25	Self – Trapping Screw 10-16 × 1/2 Phil. Pan Hd., type B.....	4
17	WL-014-07	Lock washer.....	4
18	87714-36	Time Delay Relay.....	1
19	437070-1	Plug On Module.....	1
20	SD-036-13	Self – Trapping Screw 1/4- 20 × 1 1/4 Hex Washer Hd. Type T.....	1
21	87714-031-2	Relay Time Delay (5 Sec.).....	1
22	SD-036-13	Self – Trapping Screw 1/4- 20 × 1 1/4 Hex Washer Hd. Type T.....	2
23	475458-1	Thermostat-Solid State.....	2
24	476653	Nylon Tray.....	8
25	SC-098-07	Screw.....	6
26	294676-C	Junction Line.....	1
27	SD-008-25	Self – Trapping Screw 10-16 × 1/2 Phil. Pan Hd., type B.....	2
28	294677-4	Clamp - wire (I.D24mm).....	3
29	SD-008-25	Self – Trapping Screw 10-16 × 1/2 Phil. Pan Hd., type B.....	3
30	294677-5	Clamp - wire (I.D36mm).....	1
31	SD-008-25	Self – Trapping Screw 10-16 × 1/2 Phil. Pan Hd., type B.....	1
32	294677-3	Clamp - wire (I.D18mm).....	1
33	SD-008-25	Self – Trapping Screw 10-16 × 1/2 Phil. Pan Hd., type B.....	1
34	742206	Base Board.....	1



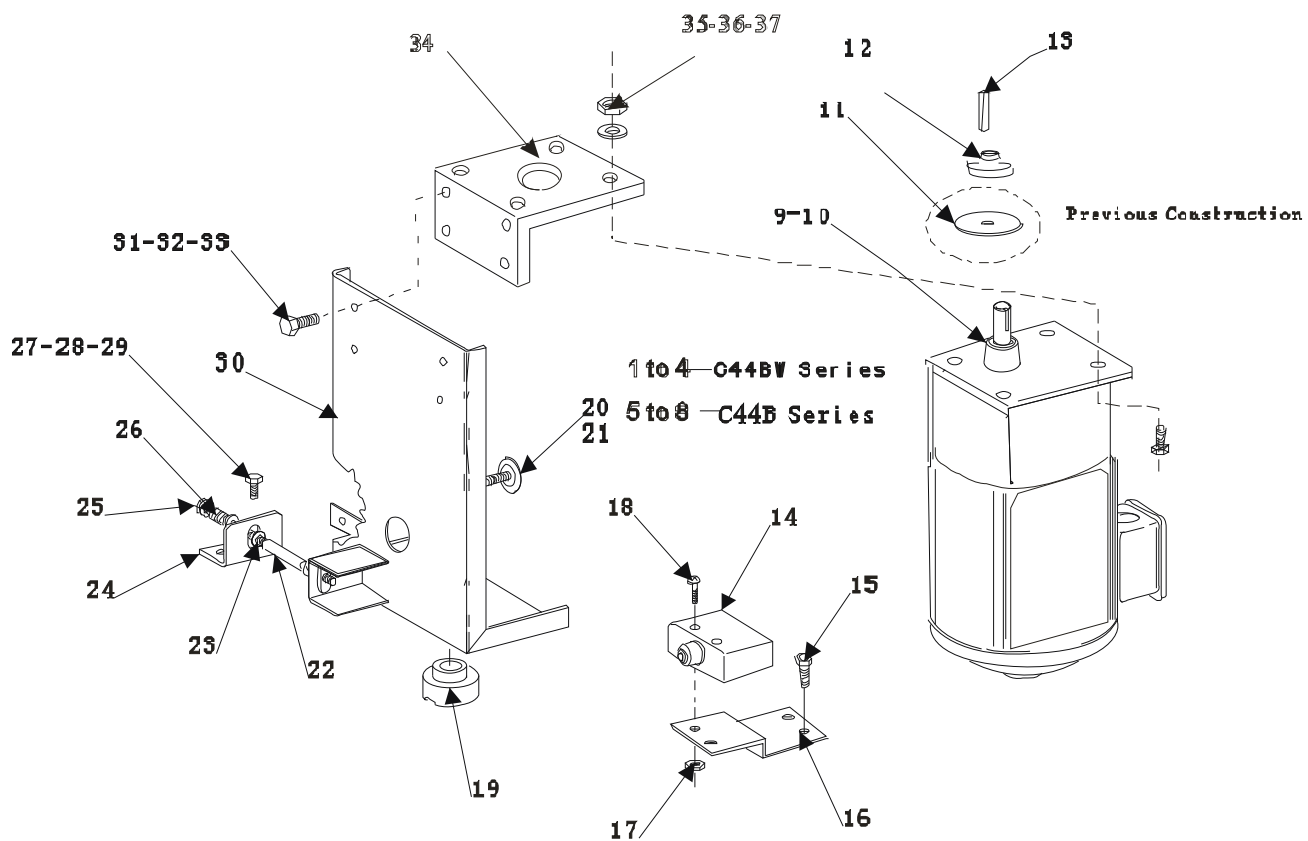
WASH MOTOR AND PUMP UNIT

WASH MOTOR AND PUMP UNIT

ILLUS.	PART	NAME OF PART	AMT
1	328362	Strainer - Pump.....	1
2	119050	Gasket.....	1
3	749586	Hose – Discharge(old number :328215).....	1
4	542337	Clamp – Hose.....	2
5	270968	Gasket – Wash Pipe.....	1
6	742304	Tube Discharge.....	1
7	SC-041-29	Cap Screw 3/8-16x7/8 Hex Hd. (SST).....	4
8	WS-006-44	Washer.....	4
9	WL-006-22	Lockwasher 5/16 Light.....	4
10	NS-015-11	Nut 5/16 - 18.Hex.....	4
11	274227-2	Clamp.....	1
12	SC-041-05	Cap Screw 1/4-16x5/8 Hex Hd. (SST).....	2
13	WL-007-15	Lockwasher 1/4.....	2
14	742218	Bracket – Motor Support.....	1
15	NS-015-01	Nut 1/4 –20 Hex (SST).....	2
16	274230-1	Motor (1Ph., 60Hz.)(2 HP).....	1
17	274230-2	Motor (3Ph., 60Hz.)(2 HP).....	1
18	274230-3	Motor (1Ph., 50Hz.)(2 HP).....	1
19	274230-4	Motor (3Ph., 60Hz.)(2 HP).....	1
20	274227-3	Adapter.....	1
21	274227-6	Seal – Shaft.....	1
*22	274227-7	Impeller & Sleeve (60 HZ).....	1
*23	274227-10	Impeller & Sleeve (50 HZ).....	1
* *24	274227-12	Impeller & Sleeve (60 HZ).....	1
* *25	274227-7	Impeller & Sleeve (60 HZ).....	1
26	274227-4	Gasket.....	1
27	119051	Gasket.....	2
28	812776	Strengthen Panel.....	2
29	274227-5	Bolt.....	4
30	274227-1	Pump Shell (Incls. Items 19).....	1
31	742303	Shroud.....	1
32	WL-006-23	Lockwasher 5/16 Medium (SST).....	10
33	NS-015-11	Nut 5/16-18.Hex.....	10
*	270950-1	Pump (1 ph., 60hz.)(2HP)(Incls. items 7 thru 11, 16, 20, 21, 22, 26 28&29).....	1
*	270950-2	Pump (3 ph., 60hz.)(2HP)(Incls. items 7 thru 11, 17, 20, 21, 22, 26, 28&29).....	1
*	270950-3	Pump (1 ph., 50hz.)(2HP)(Incls. items 7 thru 11, 18, 20, 21, 23, 26, 28&29).....	1
*	270950-4	Pump (3 ph., 50hz.)(2HP)(Incls. items 7 thru 11, 19, 20, 21,23,26,28&29).....	1
**	270950-21	Pump (1 ph., 60hz.)(2HP)(Incls. items 7 thru 11,16,20,21,24,26,28&29).....	1
**	270950-22	Pump (3 ph., 60hz.)(2HP)(Incls. items 7 thru 11,17,20,21, 24,26,28&29).....	1
**	270950-23	Pump (1 ph., 50hz.)(2HP)(incls. Items 7 thru 11,18,20,21, 25,26,28&29).....	1
**	270950-24	Pump (3 ph., 50hz.)(2HP)(incls. items 7 thru 11,19,20,21,25,26,28&29).....	1

* C44B Series

** C44BW Series



CONVEYOR DRIVE UNIT
(C44B 、 C44BW SERIES) 1/6 HP

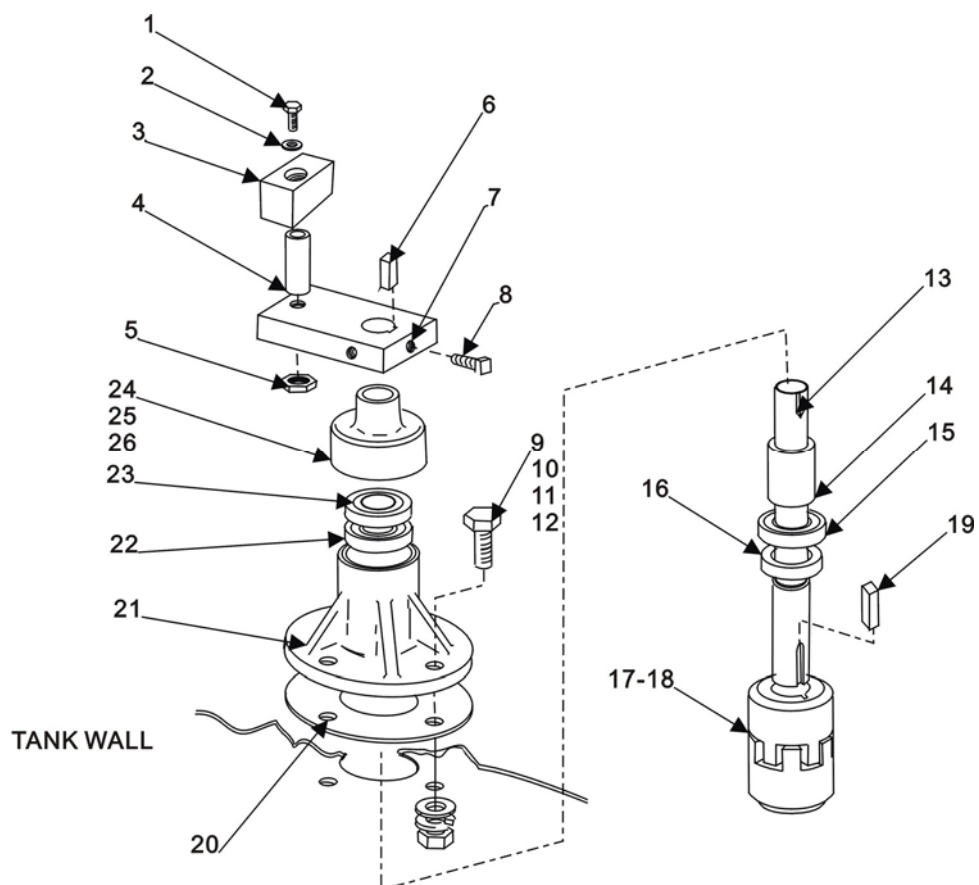
CONVEYOR DRIVE UNIT

(C44B 、 C44BW SERIES) 1/6 HP

ILLUS.	PART	NAME OF PART	AMT
** 1	328002-1	Motor - Conveyor (208-240/480 V., 60Hz., 3Ph.).....	1
** 2	328002-2	Motor - Conveyor (208-240 V., 60Hz., 1Ph.).....	1
** 3	328002-3	Motor - Conveyor (200-240 V., 50Hz., 1Ph.).....	1
** 4	328002-4	Motor - Conveyor (200-240/380-415 V., 50Hz., 3Ph.).....	1
* 5	437044-1	Motor - Conveyor (208-240/480 V., 60Hz., 3Ph.).....	1
* 6	437044-2	Motor - Conveyor (208-240 V., 60Hz., 1Ph.).....	1
* 7	437044-3	Motor - Conveyor (200-240 V., 50Hz., 1Ph.).....	1
* 8	437044-4	Motor - Conveyor (200-240/380-415 V., 50Hz., 3Ph.).....	1
	9	328379-1 Seal - Oil (Output Shaft-Shown).....	1
	10	328379-2 Seal - Oil (Motor Drive Shaft).....	1
	11	474423 Flinger(replaced by Item 12).....	1
	12	274748-1 Seal - Labyrinth.....	1
	13	274231-57 Key - 3/16×1 1/8 Lg.....	1
	14	87711-260 Switch - Interlock.....	1
	15	SC-067-05 Mach. Screw 8-32×1/2 Hex Hd (SST).....	2
	16	742220 Bracket - Switch.....	1
	17	NS-031-16 Stop Nut 10-24 Hex (SST).....	2
	18	SC-021-24 Mach. Screw 10-24×3/4 Phil. Rd. Had. (SST).....	2
	19	270927 Pilot Bearing.....	2
	20	742314 Actuator - Switch.....	1
	21	NS-032-33 Stop Nut 1/4 - 28 Flex loc.....	1
	22	271083 Spacer - Overload.....	1
	23	WS-029-05 Washer.....	1
	24	436017 Bracket - Load.....	1
	25	SC-120-72 Cap Screw 5/16 - 18 x4 1/2 Hex Hd.....	1
	26	436952 Spring - Overload.....	2
	27	SC-041-10 Cap - Screw 5/16 - 18 x5/8 Hex Hd.....	2
	28	WL-006-23 Lockwasher.....	2
	29	NS-015-11 Nut 5/16-18 Hex.....	2
	30	742313 Bracket - Motor.....	1
	31	SC-041-31 Cap Screw 3/8 - 16 x 1 1/4 Hex Hd.....	4
	32	WL-006-17 Lockwasher.....	4
	33	NS-015-13 Nut 3/8- 16 Hex (SST).....	4
	34	7152027 Bracket-Motor.....	1
	35	NS-015-11 Nut 5/16-18 Hex.....	4
	36	WL-006-23 Lock washer.....	4
	37	SC-041-13 SCREW.....	4

* C44B Series

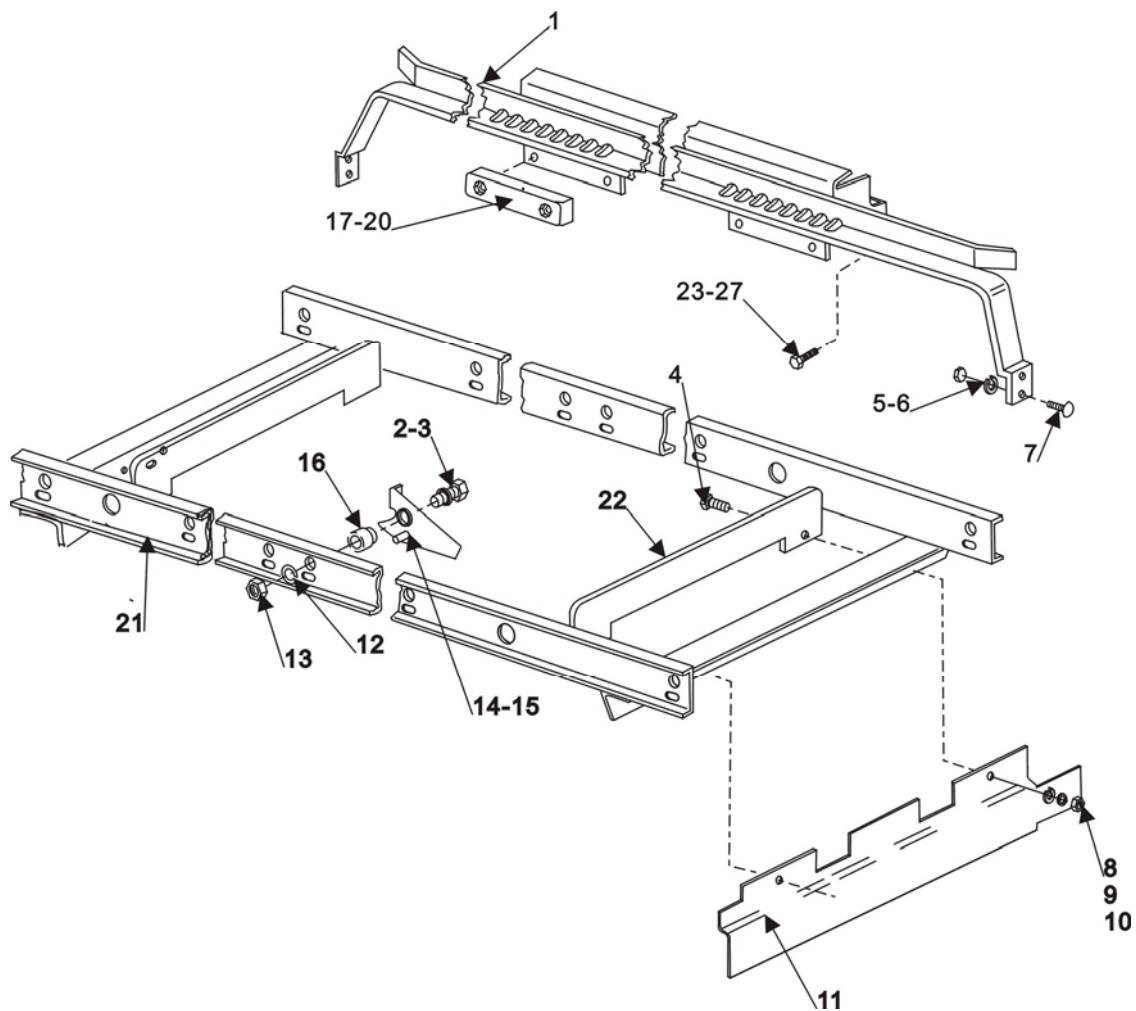
** C44BW Series



CONVEYOR DRIVE TRAIN

CONVEYOR DRIVE TRAIN

ILLUS.	PART	NAME OF PART	AMT
1	SC-041-20	Cap Screw 5/16 – 18 x 2 1/8 Hex Hd.....	1
2	WS-017-08	Washer.....	1
3	474660	Slide – Drive Crank.....	1
4	437061	Spacer – Bearing.....	1
5	NS-032-35	Stop Nut 5/16 – 18 Flex loc.....	1
6	12430-39	Key 3/16 Sq. x3/8 Lg.....	1
7	270943	Arm – Crank.....	1
8	SC-050-01	Set Screw 1/4-20 x 1/2 Square Hd. Cup Pt.....	2
9	SC-041-13	Cap Screw 5/16 – 18 x 1 Hex Hd. (SST).....	4
10	WS-017-08	Washer.....	4
11	WL-006-23	Lockwasher 5/16 Medium (SST).....	4
12	NS-015-11	Nut 5/16 – 18 hex.....	4
13	270937	Shaft – Crank.....	1
14	436879	Spacer – Bearing.....	1
15	BB-021-19	Ball Bearing – Hoover NSK 6003.....	1
16	270939	Seal – Lower Housing.....	1
17	328083	Coupling - Motor (C44BW)(C44B 1/6 Hp. Motor).....	1
18	274228-2	Insert – Coupling Service (Love Joy).....	1
19	12430-40	Key 3/16 Sq. x 3/4 Lg.....	1
20	270942	Gasket.....	1
21	274749	Housing Assy (incl. Item 13-16,22-24).....	1
22	BB-021-19	Ball Bearing – Hoover NSK 6003.....	1
23	270940	Seal – upper Housing.....	1
24	274748	Seal Labyrinth.....	1
25	527042	Adhesive.....	AR
26	522696	Solvent.....	AR

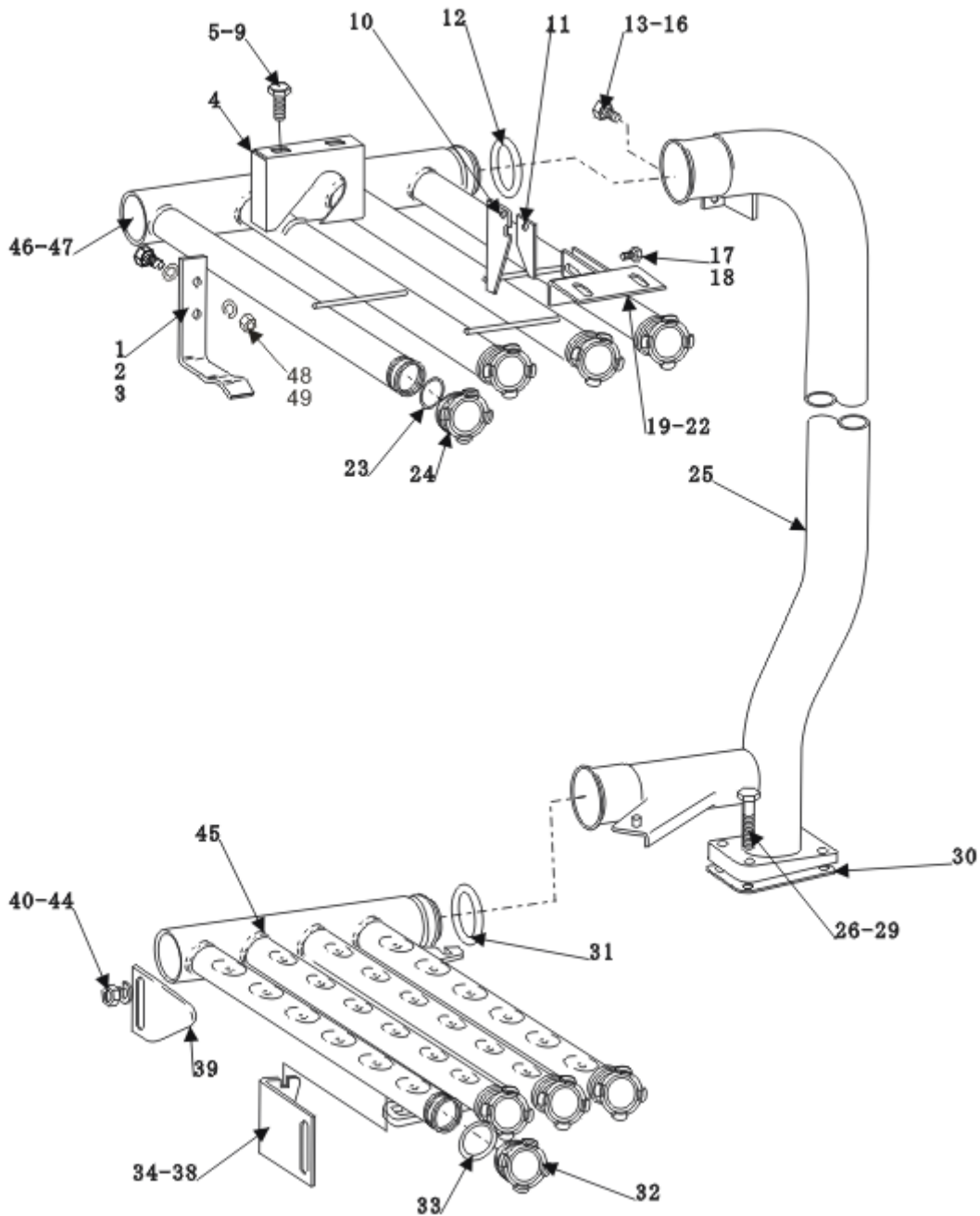


**TRACK AND CRADLE
(WASH SECTION)**

TRACK AND CRADLE (WASH SECTION)

ILLUS.	PART	NAME OF PART	AMT
1	742306	Rack Track.....	2
2	WS-018-04	Washer.....	6
3	SC-041-31	Cap Screw 3/8-16 x 1 1/4 Hex Hd.....	6
4	SC-041-10	Cap Screw 5/16-18 x 5/8 Hex Hd.....	4
5	NS-015-11	Nut 5/16 – 18 Hex.....	8
6	WL-006-23	Lockwasher 5/16 Medium (SST).....	8
7	SC-041-11	Cap Screw 5/16-18 x 3/4 hex Hd. (SST).....	8
8	NS-015-11	Nut 5/16 – 18 Hex.....	4
9	WS-017-08	Washer.....	4
10	WL-006-23	Lockwasher 5/16 Medium (SST).....	4
11	742214	Baffle – Lower (R – L Only).....	1
12	WL-006-28	Lockwasher 3/8 Medium.....	6
13	NS-015-13	Nut 3/8-16 Hex.....	6
14	436704-1	Dog (Front, R-L) (Rear, L-R).....	3
15	436704-2	Dog – Not Shown (Front, L-R)(Rear, R-L).....	3
16	270983	Spacer.....	6
17	473231	Slider – Large.....	4
18	SC-041-15	Cap Screw 5/16 – 18 x 1 1/4 Hex Hd.....	8
19	WL-006-23	Lockwasher 5/16 Medium (SST).....	8
20	NS-015-11	Nut 5/16 – 18 Hex.....	8
21	742329	Cradle.....	1
22	742130	Baffle – Cradle Upper.....	2
23	SC-041-31	Cap Screw 3/8-16 x 1 1/4 Hex Hd.....	2
24	SC-041-11	Cap Screw 5/16-18 x3/4 Hex Hd. (SST).....	10
25	WS-017-01	Washer.....	20
26	WL-006-23	Lockwasher 5/16 Medium (SST).....	14
27	NS-015-11	Nut 5/16 – 18 Hex.....	14

- Quantities listed are for 20' × 20' racks.

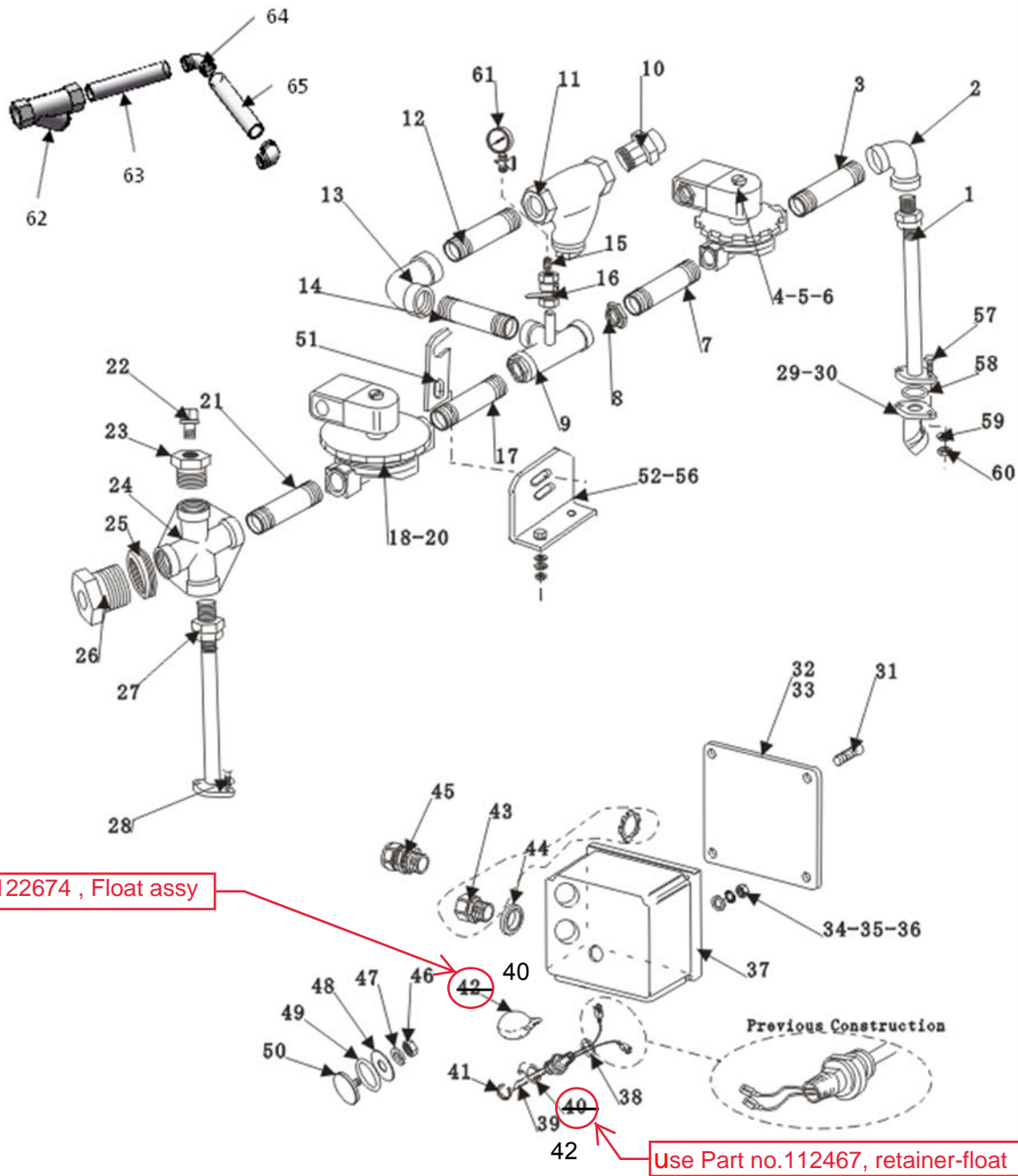


WASH ARMS AND TUBES (WASH SECTION)

ILLUS.	PART	NAME OF PART	AMT
1	436947-1	Hanger.....	2
2	SC-041-50	Cap Screw 1.4-20 x 1/2 Hex Hd.....	4
3	WL-006-17	Lockwasher 1/4.....	4
4	742187	Guide – Upper Wash Arm.....	1
5	SC-041-11	Cap Screw 5/16-18 x 3/4 Hex Hd.(SST).....	2

WASH ARMS AND TUBES (WASH SECTION)

ILLUS.	PART	NAME OF PART	AMT
6	WS-017-01	Washer.....	2
7	WS-017-08	Washer.....	2
8	WL-006-23	Lockwasher 5/16 Medium (SST).....	2
9	NS-015-11	Nut 5/16-18 Hex.....	2
10	289760	Latch.....	1
11	289759	Latch.....	1
12	67500-110	O Ring.....	1
13	SC-041-01	Cap Screw 1/4 -20 x 3/4 Hex Hd.....	1
14	WS-022-01	Washer.....	2
15	WL-006-17	Lockwasher1/4.....	1
16	NS-015-01	Nut 1/4-20 Hex (SST).....	1
17	SC-041-01	Cap Screw 1/4 -20 x 3/4 Hex Hd.....	2
18	NS-031-19	Stop Nut 1/4-20 Elastic (SST).....	2
19	742308	Bracket.....	1
20	WS-017-08	Washer.....	2
21	WL-006-23	Lockwasher 5/16 Medium (SST).....	2
22	NS-015-11	Nut 5/16-18 Hex.....	2
23	67500-127	O Ring.....	4
24	475087	Plug – Wash Arm.....	4
25	742307	Wash Pipe.....	1
26	SC-041-18	Cap Screw 5/16 -18 x 1 3/4 Hex Hd (SST).....	4
27	WS-017-08	Washer.....	8
28	WL-006-23	Lockwasher 5/16 Medium (SST).....	4
29	NS-015-11	Nut 5/16-18 Hex.....	4
30	270968	Gasket- Wash Pipe.....	1
31	67500-110	O Ring.....	1
32	475087	Plug – Wash Arm.....	4
33	67500-127	O Ring.....	4
34	742185	Catch-Adjustable.....	1
35	NS-015-11	Nut 5/16-18 Hex.....	2
36	WL-006-23	Lockwasher 5/16 Medium (SST).....	2
37	WS-017-08	Washer.....	2
38	SC-041-11	Cap Screw 5/16-18 x3/4 Hex Hd. (SST).....	2
39	742184	Support – Adjustable.....	1
40	SC-041-13	Cap Screw 5/16-18 x1Hex Hd. (SST).....	2
41	SC-041-11	Cap Screw 5/16-18 x3/4 Hex Hd. (SST).....	2
42	WL-006-23	Lockwasher 5/16 Medium (SST).....	2
43	WS-017-08	Washer.....	2
44	NS-015-11	Nut 5/16-18 Hex.....	2
45	742305	Wash Arm- Lower.....	1
46	742330	Wash Arm (R-L)(B&BW Series).....	1
47	742331	Wash Arm (L-R) (B&BW Series).....	1
48	WS-022-01	Lock washer.....	4
49	NS-031-21	Nut.....	4



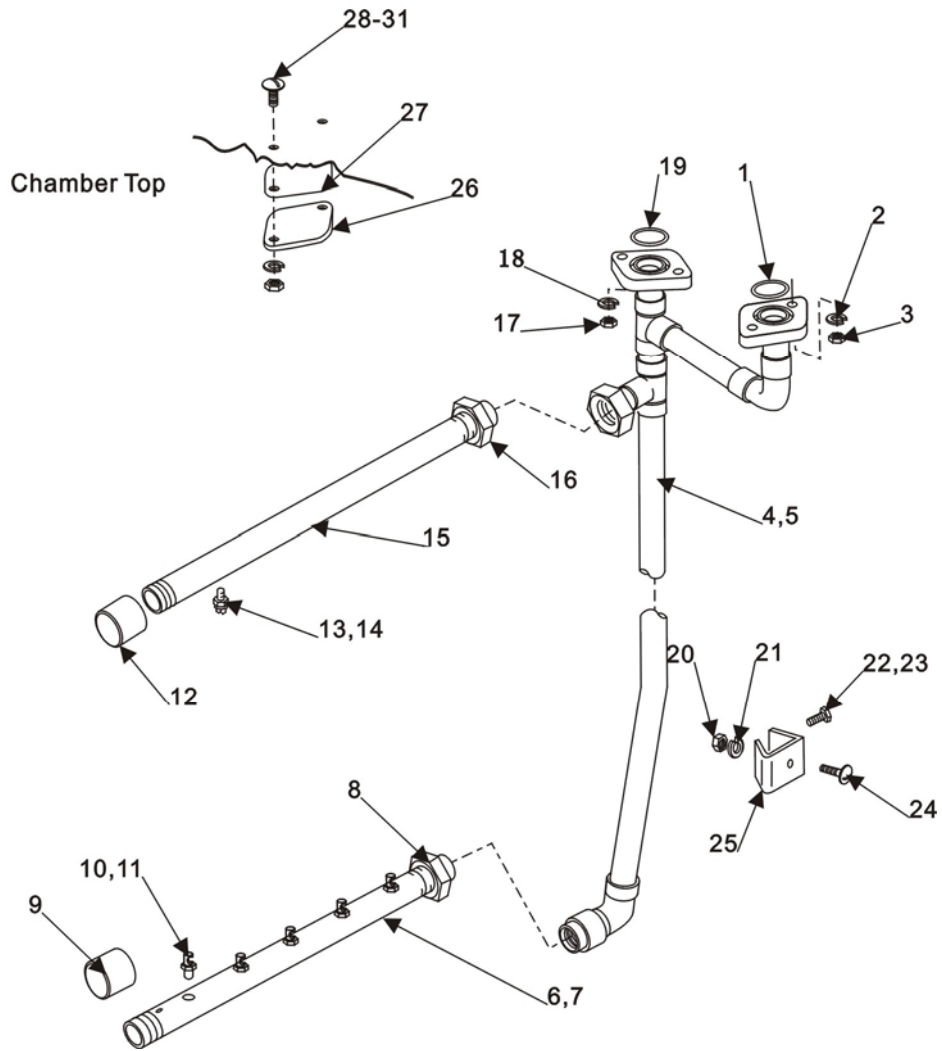
FILL AND OUTSIDE RINSE PIPING

ILLUS.	PART	NAME OF PART	AMT
	742449-1	Fill & Outside Rinse Piping L).....	1
	742449-2	Fill & Outside Rinse Piping (L-R).....	1
1	473309	Fill Piping-Outside.....	1
2	FP-015-09	90° Elbow 3/8.....	1
3	FP-040-27	Nipple 3/8"×3.25.....	1
4	271006-1	Solenoid Valve 3/8 (120v) (Incls. Item 5 & 6).....	1
5	271839-1	Coil – Solenoid Valve (120V).....	1
6	271837	Service kit – 1/2 Solenoid Valve.....	1
7	FP-076-05	Nipple 3/8"×4.0.....	1
8	FP-027-16	Lock Nut 3/4-3/8.....	1
9	328763	Piping – Common Connection.....	1
10	123366	Connector - Fill.....	1
11	186922	Line Strainer (3/4).....	1

FILL & OUTSIDE RINSE PIPING

ILLUS.	PART	NAME OF PART	AMT
12	FP-042-12	Fill Piping 3/4 × 8.25.....	1
13	FP-015-23	90° Elbow 3/4.....	1
14	FP-041-87	Nipple 3/4 × 4.875.....	1
15	FP-028-46	Cap 1/4.....	1
16	436319	Petcock 1/4.....	1
17	FP-041-77	Nipple 3/4 × 3.5.....	1
18	271002-1	Solenoid Valve 3/4"(120v) (Incls. 19&20).....	1
19	271839-1	Coil (120V).....	1
20	271838	Service kit – 3/4 Solenoid Valve.....	1
21	7152017-4	Nipple 3/4 × 3.75.....	1
22	FP-028-03	Screw 1/8.....	1
23	FP-084-56	Lock Nut 3/4-1/8.....	1
24	FP-034-12	Piping – Cross Connection 3/4.....	1
25	FP-027-19	Connector 3/4-1/2.....	1
26	107218	Coupling – Thermometer Bulb.....	1
27	473308	Piping-Rinse.....	1
28	SC-041-15	Cap Screw 5/16 – 18 × 1 1/4 Hex Hd.....	2
29	742332-T	Elbow (L-R) Tinning.....	1
30	742333-T	Elbow (R-L) Tinning.....	1
31	SD-012-20	Self – Tapping Screw 8-32 × 1/2 Phil. Truss Hd.. Type T.....	4
32	112007	Gasket	1
33	288465	Lid & Gasket Assv. (Incls Item.....	1
34	NS-018-28	Jam Nut 1/2 – 20 Hex.....	1
35	WL-014-31	Lockwasher 1/2 External Shake proof (SST).....	1
36	WS-010-40	Washer.....	1
37	743870	Junction Box – Auto Fill.....	1
38	67500-72	O Ring.....	1
--	328495	Probe & Switch Assy. (2 Wire) (Incls Item 43-47).....	1
39	328486	Probe & Switch.....	1
40	122674	Float Assv.....	1
41	RR-010-13	Retaining Ring.....	1
42	112647	Retainer – Float.....	1
43	FE-024-49	Connector – Straight 1/2.....	1
44	FE-008-10	1/2 Gasket Assv.....	1
* 45	FE-024-57	Connector – Straight 1/2(incls Gasket).....	1
46	NS-015-01	Nut 1/4-20 Hex (SST).....	1
47	WL-006-17	Lockwasher 1/4 Medium.....	1
48	119254	Retainer	1
49	67500-31	O Ring.....	1
50	119244	Cap & Stud Assv.....	1
51	742189	Plate – Fill Piping.....	1
52	742188	Bracket – Fill Piping.....	1
53	SC-041-12	Screw.....	2
54	WS-029-05	Washer.....	6
55	WL-006-23	Lockwasher 5/16 Medium (SST).....	4
56	NS-015-11	Nut 5/16 Hex (SST).....	4
57	SC-041-15	Cap Screw 5/16-18 × 1 1/4 Hex Hd.....	2
58	67500-12	O Ring.....	1
59	WL-006-23	Lockwasher 5/16 Medium (SST).....	2
60	NS-015-11	Nut 5/16-18 Hex.....	2
61	328247	Gauge – Water Pressure.....	1
62	186922	Line Strainer (3/4).....	2
63	FP-42-12	Fill Piping 3/4 × 8.25.....	2
64	FP-15-13	90° Elbow 3/4.....	4
65	FP-41-87	Nipple 3/4 × 4.875.....	2

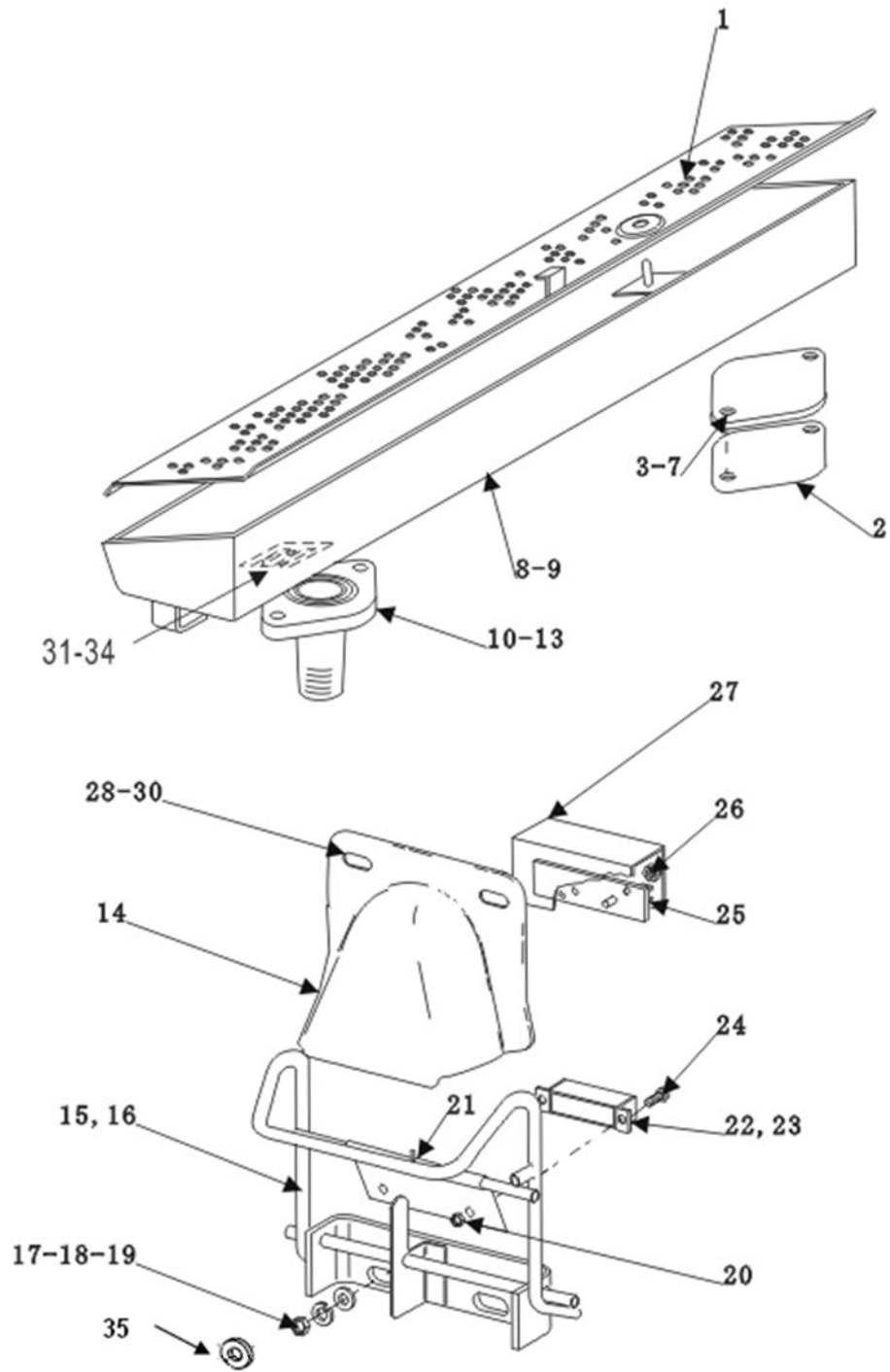
* After Item 43 & 44 exhausted, use Item 45 . Item 62-65 only for Japanese machines



INSIDE METALLIC RINSE PIPING

INSIDE METALLIC RINSE PIPING

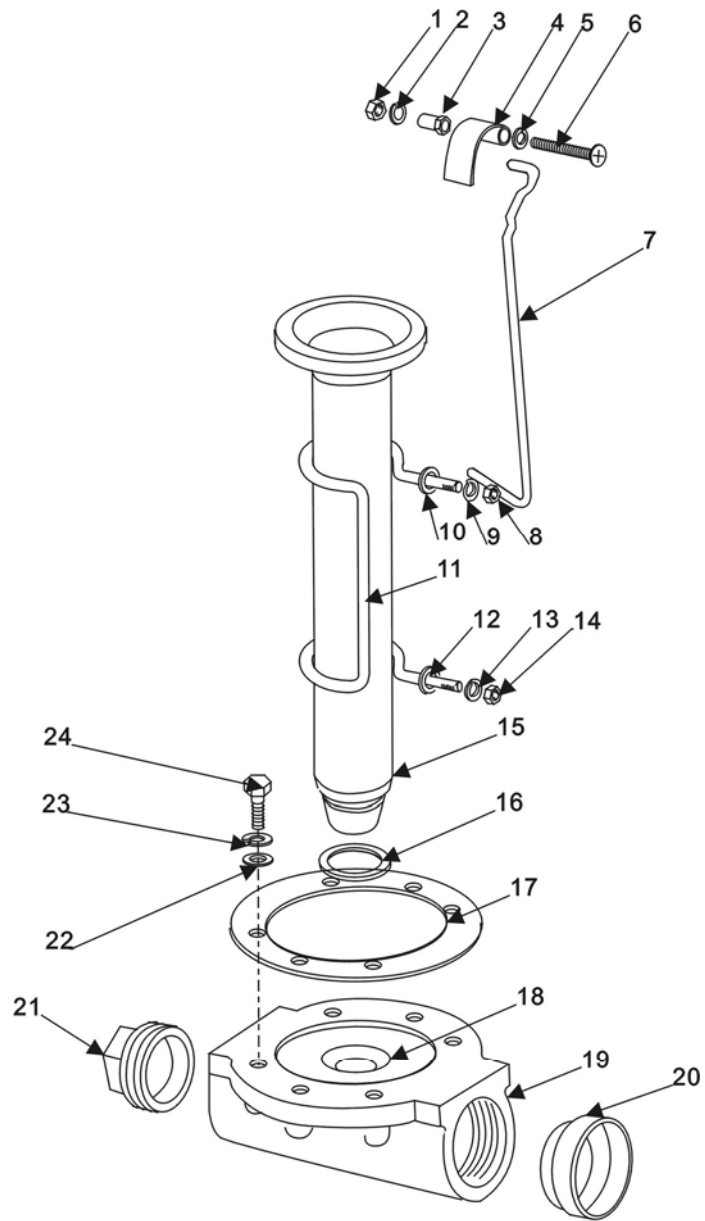
ILLUS.	PART	NAME OF PART	AMT
1	67500-12	O Ring.....	1
2	WL-006-23	Lockwasher 5/16 Medium (SST).....	2
3	NS-015-11	Nut 5/16-18 Hex.....	2
4	742323-T	Final Rinse Inside Piping (R-L)(26 1/8Door Heights)(C44B & C44BW).....	1
5	742324-T	Final Rinse Inside Piping (L-R) (26 1/8 Door Height)(C44B & C44BW).....	1
6	328060-1	Lower Rinse Arm (C44BW).....	1
7	271024-1	Lower Rinse Arm (C44B).....	1
8	FP-030-27	Lock Nut 1/2 NPSL Pipe (Brass).....	1
9	FP-029-08	Pipe Cup 1/2 (Brass).	1
10	328059	Nozzle - Rinse (C44BW).....	6
11	22731-1	Nozzle – Rinse (C44B).....	5
12	FP-029-08	Pipe Cup 1/2 (Brass).	1
13	81812-3	Nozzle – Rinse (Brass) (C44BW).....	6
14	81812-5	Nozzle – Rinse (Brass0) C44B).....	6
15	271072-1	Upper Rinse Arm 6 Nozzle (incl's Item 11,12 & 15)(C44B & C44BW).....	1
16	FP-030-27	Lock Nut 1/2 NPSL Pipe (Brass).....	1
17	NS-015-11	Nut 5/16- 18 Hex.....	2
18	WL-006-23	Lockwasher 5/16 Medium (SST).....	2
19	67500-12	O Ring.....	1
20	NS-015-11	Nut 5/16- 18 Hex.....	1
21	WL-006-23	Lockwasher 5/16 Medium (SST).....	1
22	SC-053-50	Screw.....	1
23	WL-006-07	Lockwasher Medium (SST).....	1
24	SC-053-15	Mach. Screw 5/16-18 x1/2 Truss Hd. (SST).....	1
25	742157	Bracket.....	1
26	742219	Flange.....	1
27	276407	Gasket – Rinse Pipe.....	1
28	SC-041-12	Mach. Screw 5/16-18 x 5/8 Truss Hd.....	2
29	WS-029-05	Washer.....	2
30	WL-006-23	Lockwasher 5/16 Medium (SST).....	2
31	NS-015-11	Nut 5/16- 18 Hex.....	2



ACTUATOR MECHANISM AND RINSE DRAIN-OFF PAN

ACTUATOR MECHANISM AND RINSE DRAIN-OFF PAN

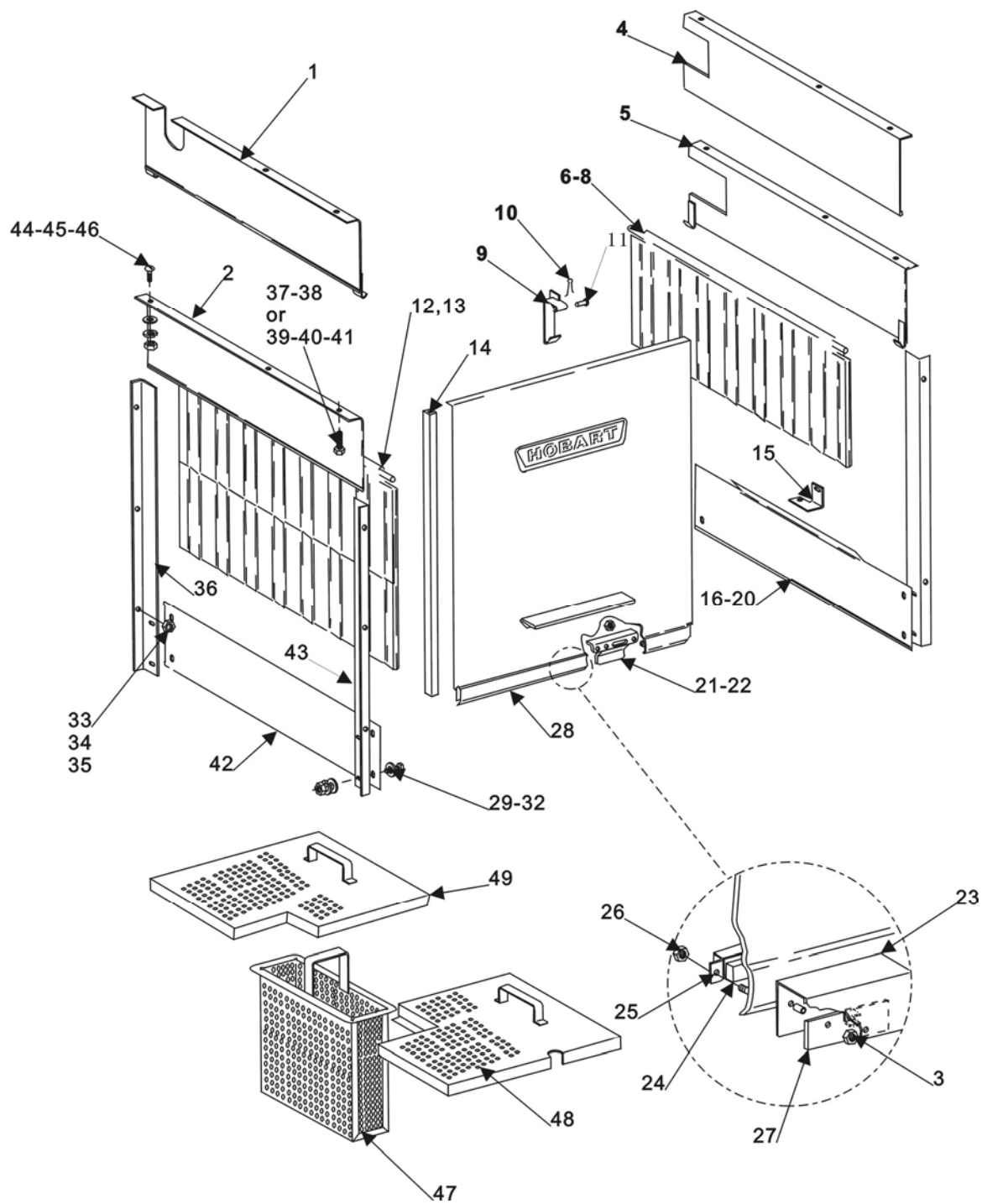
ILLUS.	PART	NAME OF PART	AMT
1	742336	Strainer.....	1
2	276407	Gasket – Rinse Pipe.....	1
3	742219	Flange.....	1
4	SC-041-12	Cap Screw 5/16 – 18 x7/8 Hex Hd.....	2
5	WS-029-05	Washer.....	2
6	WL-006-23	Lockwasher 5/16 Medium (SST).....	2
7	NS-015-11	Nut 5/16-18 Hex.....	2
8	742317	Rinse Pan Assy. (R-L).....	1
9	742315	Rinse Pan Assay (L-R).....	1
10	475056	Flange & Nipple Assay... ..	1
11	436827	Gasket.....	1
12	WL-006-23	Lockwasher 5/16 Medium (SST).....	2
13	NS-015-11	Nut 5/16-18 Hex.....	2
14	436835	Shroud.....	2
15	742318	Actuator (R-L) (C44B&C44BW).....	2
16	742319	Actuator (L-R) (C44B&C44BW).....	2
17	WL-006-23	Lockwasher 5/16 Medium (SST).....	4
18	WS-017-08	Washer.....	4
19	NS-015-11	Nut 5/16-18 Hex.....	4
20	NS-031-50	Stop Nut 6-32 Hex (SST).....	4
21	PC-005-07	Cotter Pin 3/32 x1/2.....	2
22	290160	Magnet.....	2
23	742026	Retainer – Magnet.....	2
24	SC-021-08	Mach. Screw 6-32 x3/8 Rd. Hd. (SST).....	4
25	473415	Switch – Reed Encapsulated.....	2
26	NS-031-50	Stop Nut 6-32 Hex (SST).....	4
27	270996	Insulator - Switch.....	2
28	NS-029-01	Wing Nut 1/4- 20.....	4
29	WL-006-17	Lockwasher 1/4 Medium.....	4
30	WS-017-06	Washer.....	4
31	742192	Panel.....	1
32	WS-017-06	Washer.....	2
33	WL-006-17	Lock washer.....	2
34	NS-015-01	Nut.....	2
35	WS-029-05	Washer.....	4



**DRAIN UNIT
(WASH SECTION)**

DRAIN UNIT (WASH SECTION)

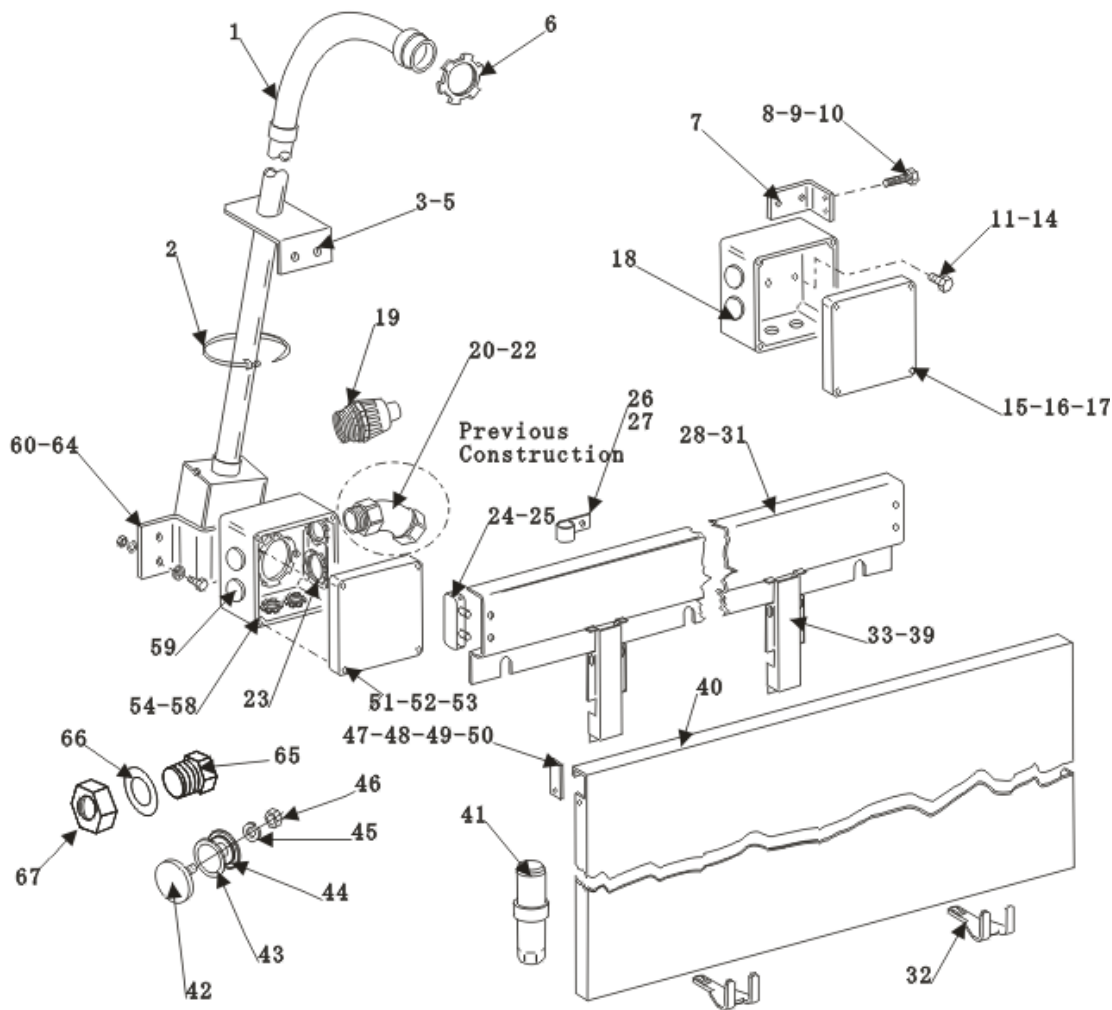
ILLUS.	PART	NAME OF PART	AMT
1	NS-051-01	Nut 1/4-20 Hex (SST)..... NS-M6	1
2	WL-006-17	Lockwasher 1/4 Medium.....	1
3	119116-C1	Axle – Drain Lever.....	1
4	742095	Drain Lever (RH).....	1
5	WS-022-01	Washer.....	1
6	SCT-M6-35	Screw M6×35 Rd..... SCH-M6-35	1
7	270953	Lift Rod Overflow.....	1
8	NS-015-11	Nut 5/16-18 Hex.....	2
9	WL-006-23	Lockwasher 5/16 Medium (SST).....	1
10	WS-017-01	Washer.....	1
11	270952	Retainer.....	1
12	WS-017-01	Washer.....	2
13	WL-006-23	Lockwasher 5/16 Medium (SST).....	1
14	NS-015-11	Nut 5/16-18 Hex.....	2
15	119099-2	Tube- Overflow.....	1
16	67500-120	O Ring.....	2
17	289464	Gasket – Drain.....	2
18	270947	Sleeve – Drain Body.....	2
19	289465	Drain Body.....	2
20	328813	Bushing – Drain.....	2
21	FP-028-32	Pipe Plug 2 Sq. Hd.....	1
22	WS-006-44	Washer.....	12
23	WL-006-28	Lockwasher 3/8 –16 x1 Hex Hd. (SST).....	12
24	SC-041-10	Cap Screw 3/8-16 x 1 Hex Hd. (SST).....	12



DOOR, CURTAINS, BAFFLES, AND STRAINERS

DOOR, CURTAINS, BAFFLES, AND STRAINERS

ILLUS.	PART	NAME OF PART	AMT
1	742334	Baffle – Unloading (R-L).....	1
2	742326	Baffle - Loading (L-R).....	1
3	NS-031-50	Stop Nut 6-32 Hex (SST).....	2
4	742335	Baffle – Loading (R-L).....	1
5	742302	Baffle – Unloading (L-R).....	1
6	120151-1	Splash Curtain.....	1
7	120151-1	Splash Curtain. (Gas heat, C44B series or All heats, C44B series).....	1
8	742222	Curtain Rod.....	2
9	742312	Catch – Door.....	1
10	PC-005-02	Cotter Pin 1/16 x1/2 (SST).....	1
11	12114	Pin.....	1
12	271084	Splash Curtain.....	2
13	742222	Curtain Rod.....	2
14	112378-49	Door Slide.....	2
15	742158	Bracket (ONLY L-R).....	1
16	742160	Baffle (ONLY L-R).....	1
17	SC-041-05	Cap Screw 1/4 –20 x 5/8 Hex Hd. (SST).....	3
18	WL-006-17	Lockwasher 1/4 Medium.....	3
19	WS-017-06	Washer.....	3
20	NS-015-01	Nut 1/4 – 20 Hex (SST).....	6
21	328065	Actuator – Lift Drain.....	1
22	NS-031-21	Stop Nut – Special 1/4-20 Hex.....	2
23	270996	Insulator – Switch.....	1
24	290160	Magnet.....	2
25	742026	Retainer – Magnet.....	2
26	NS-031-50	Stop Nut 6-32 Hex (SST).....	2
27	294854	Reed Mounting Board Assy(old no.473415).....	1
28	742321	Door.....	1
29	SC-041-05	Cap Screw 1/4 –20 x 5/8 Hex Hd. (SST).....	4
30	WS-017-06	Washer.....	8
31	WL-006-17	Lockwasher 1/4 Medium.....	4
32	NS-015-01	Nut 1/4–20 Hex (SST).....	4
33	WS-022-01	Washer.....	9
34	WL-006-17	Lockwasher 1/4 Medium.....	9
35	NS-015-01	Nut 1/4–20 Hex (SST).....	9
36	742161	Baffle - Vertical.....	2
37	WL-006-17	Lockwasher 1/4 Medium.....	4
38	SC-041-50	Cap Screw 1/4 –20 x 5/8 Hex Hd. (SST).....	4
39	WS-022-01	Washer.....	4
40	WL-006-17	Lockwasher 1/4 Medium.....	4
41	NS-015-01	Nut 1/4–20 Hex (SST).....	4
42	742159	Baffle – LH Lower.....	1
43	742161	Baffle - Vertical.....	1
44	SC-053-41	Mach. Screw 1/4-20 x 1/2 Truss Hd. (SST).....	2
45	WL-006-17	Lockwasher 1/4 Medium.....	2
46	NS-015-01	Nut 1/4–20 Hex (SST).....	2
47	742311	Bucket – Strainer.....	1
48	742310	Strainer - Front.....	1
49	742309	Strainer – Rear.....	1

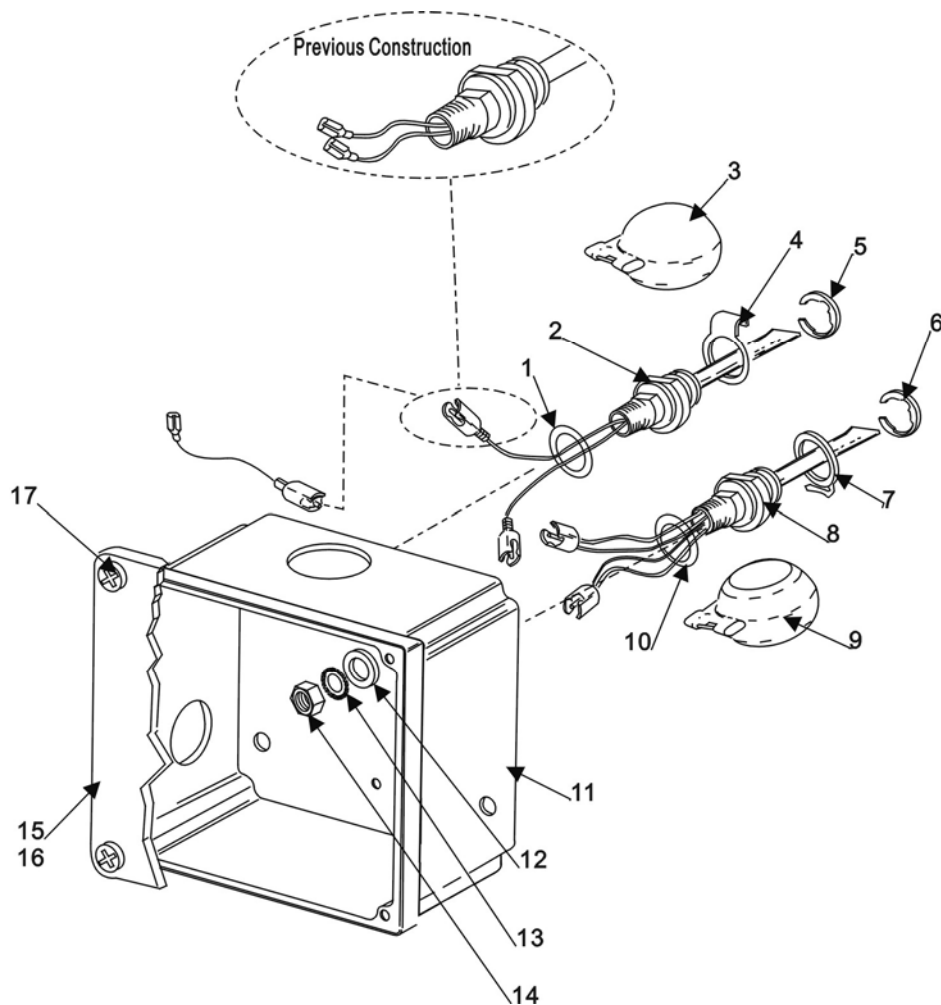


MISCELLANEOUS (Cont.)(WASH SECTION)

ILLUS.	PART	NAME OF PART	AMT
1	274232-C	Conduit – PVC(Incls. Bracket).....	1
2	122577-2	Wire Tie.....	2
3	SC-041-50	Cap Screw 1/4-20 x 1/2 Hex Hd.....	2
4	WL-006-17	Lockwasher 1/4 Medium.....	2
5	NS-015-01	Nut 1/4– 20 Hex (SST).....	2
6	FE-009-07	Lock Nut 3/4.....	2
7	742215	Bracket.....	1
8	SC-041-12	Cap Screw 5/16-18 x 7/8 Hex Hd.....	2
9	WL-006-23	Lockwasher 5/16 Medium.....	2
10	NS-015-11	Nut 5/6 –18 Hex (SST).....	2
11	SC-041-05	Cap Screw 1/4-20 x 5/8 Hex Hd.....	2
12	WS-003-49	Washer.....	2
13	WL-006-17	Lockwasher 1/4 Medium.....	2
14	NS-015-01	Nut 1/4-20 Hex (SST).....	2
15	288465	Lid & Gasket Assy. (Incls Item 16).....	1
16	112007	Gasket.....	1
17	SD-012-20	Self- Tapping Screw 8-32 x1/2 Phil. Truss Hd., Type T.....	4
18	270923-2	Box – Junction (R.H).....	1
19	FE-024-58	Connector 3/4”(Incls. O Ring & Lock Nut).....	1
20	FE-024-59	Connector 3/4”(Incls. O Ring & Lock Nut).(Replaced by item19).....	2
21	FE-008-11	Ring-Seal.....	2

MISCELLANEOUS (Cont.)(WASH SECTION)

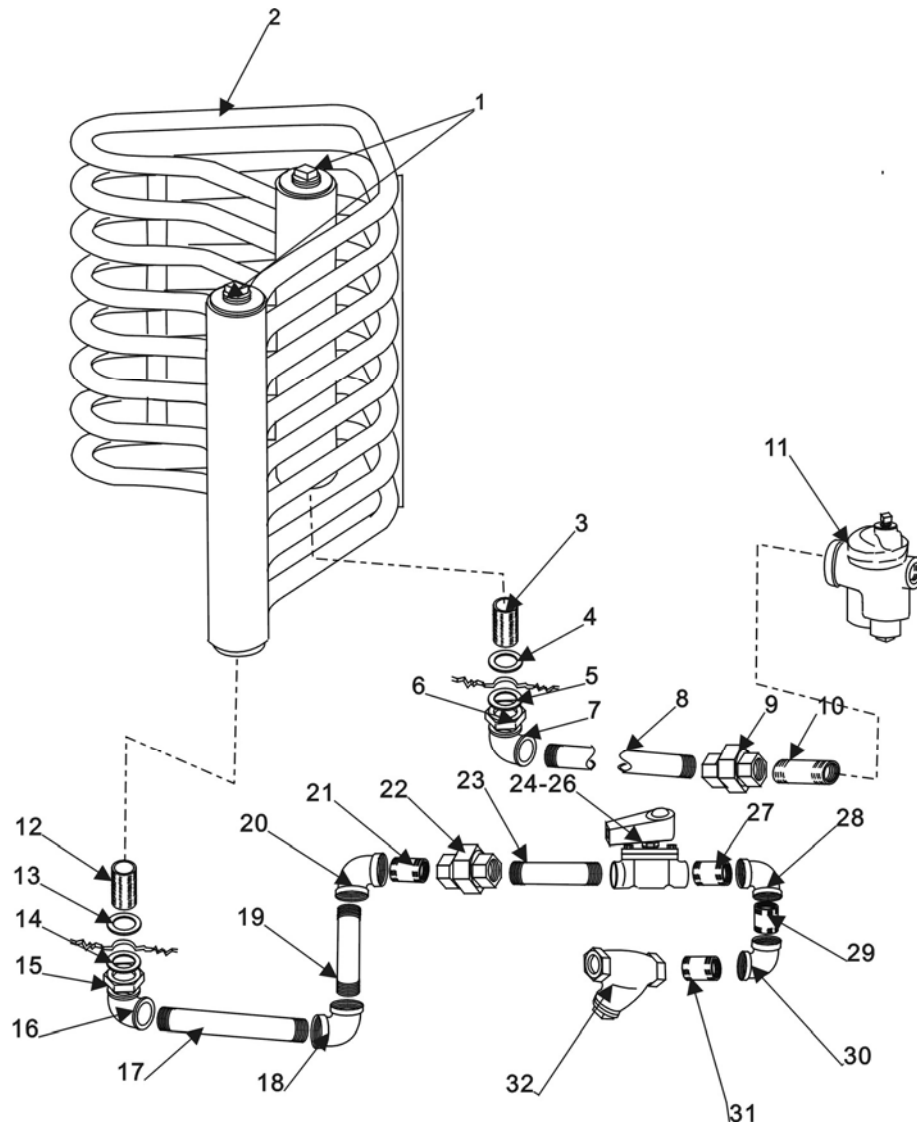
ILLUS.	PART	NAME OF PART	AMT
22	FE-006-06	Nut	2
23	FE-024-59	Connector 1" ((Incls. O Ring & Lock Nut).....	2
24	271057	Cap – Wire way.....	2
25	SD-007-38	Self-Tapping Screw 8 x 1/4 Phil. Bind Hd., Type B.....	2
26	294677-3	Clamp – Wire (3/4 I.D.).....	6
27	NS-047-94	Lock Nut Special 3/16.....	6
28	742137	Panel – Front Trim.....	1
29	WS-017-06	Washer.....	3
30	WL-006-17	Lockwasher 1/4 Medium.....	3
31	NS-015-01	Nut 1/4-20 Hex (SST).....	3
32	742201	Support.....	2
33	742136	Wire way – Vertical.....	2
34	SC-021-22	Screw.....	2
35	WL-006-07	Lockwasher #10 Medium.....	2
36	WS-017-06	Washer.....	4
37	WL-006-17	Lockwasher 1/4 Medium.....	4
38	NS-015-01	Nut 1/4-20 Hex (SST).....	4
39	WS-019-19	Washer.....	2
40	742139	Panel – Front Trim (C44B&C44BW).....	1
41	288946-C	Food - Adjustable (China).....	4
42	119244	Cap & Stud Assy.....	1
43	67500-31	O Ring.....	1
44	119254	Retainer – Cap & Stud.....	1
45	WL-006-17	Lockwasher 1/4 Medium.....	1
46	NS-015-01	Nut 1/4-20 Hex (SST).....	1
47	742138	Cover – Panel Notch.....	2
48	SC-053-05	Mach. Screw 10-24 x3/8 Phil. Truss Hd.....	2
49	WS-019-06	Washer.....	2
50	NS-031-16	Stop Nut 10-24 hex (SST).....	2
51	288465	Lid & Gasket Assy. (Incls. Item 52).....	1
52	112007	Gasket.....	1
53	SD-012-20	Self – Tapping Screw 8-32 x 1/2 Phil. Truss Hd., Type T.....	4
54	270923-1	Box – Junction (LH).....	1
55	SC-041-05	Cap Screw 1/4 – 20 x5/8 Hex Hd. (SST).....	2
56	WS-003-49	Washer.....	2
57	WL-006-17	Lockwasher 1/4 Medium.....	2
58	NS-015-01	Nut 1/4-20 Hex (SST).....	2
59	PB-004-08	Plug.....	4
60	742144	Bracket.....	1
61	SC-041-12	Cap Screw 5/16 – 18 x 7/8 Hex Hd.....	2
62	WS-017-08	Washer.....	2
63	WL-006-23	Lockwasher 5/16 Medium (SST).....	2
64	NS-015-11	Nut 5/16 – 18 Hex.....	2
65	107218	Coupling – Thermometer Bulb.....	1
66	WS-012-40	Washer.....	2
67	FP-053-05	Nut.....	1



**LOW WATER PROTECTION
(STEAM HEAT/WASH TANK)**

LOW WATER PROTECTION (STEAM HEAT/WASH TANK)

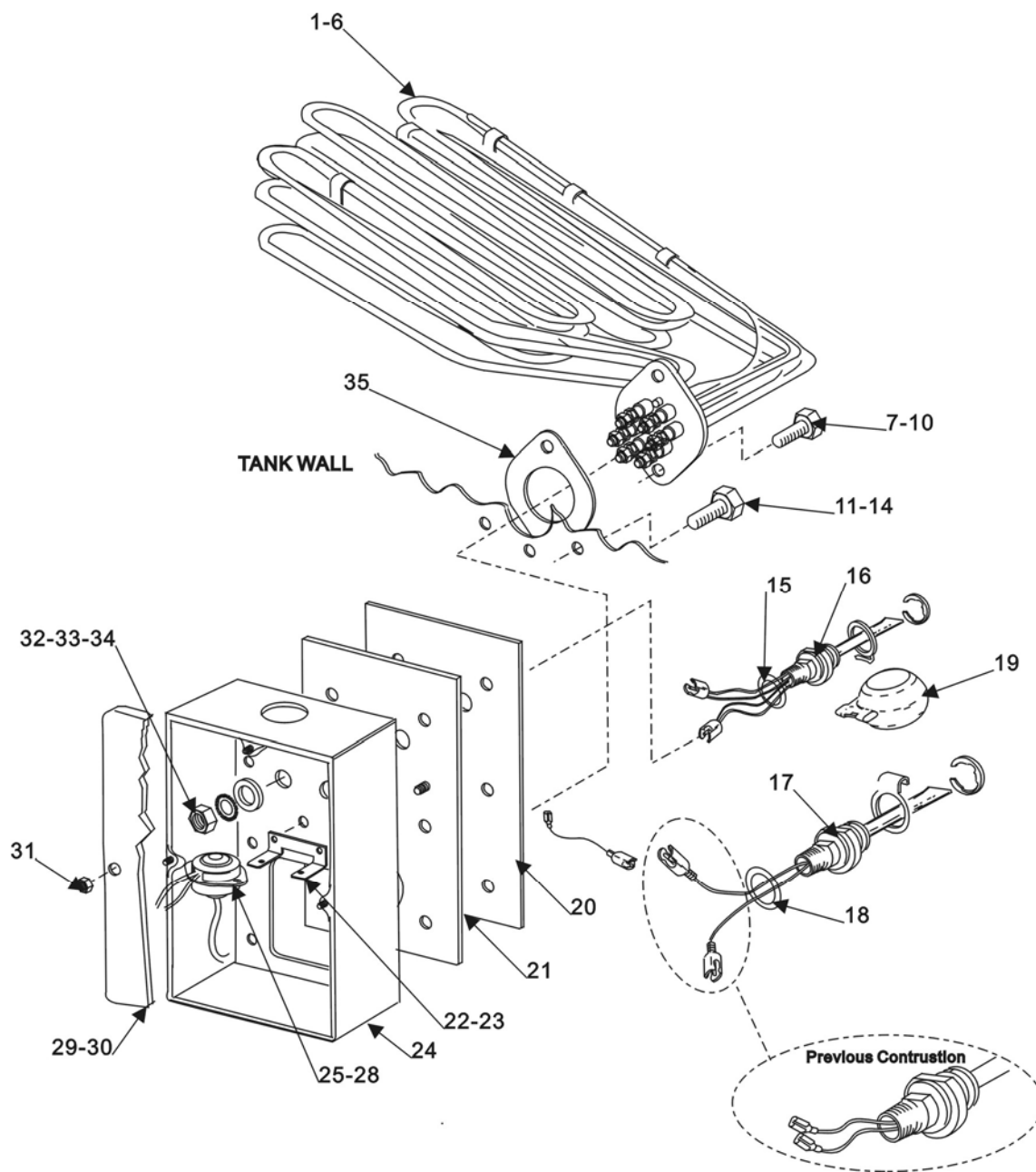
ILLUS.	PART	NAME OF PART	AMT
1	67500-72	O Ring.....	1
---	328495	Probe & Switch Assy (2 Wire) (Incls. Item 2-5).....	1
2	328486	Probe & Switch.....	1
3	122674	Float Assy.....	1
4	112467	Retainer – Float.....	1
5	RR-010-13	Retaining Ring.....	1
--	186091	Probe & Switch Assy. (4 Wire) (Incls Item 6-9).....	1
6	RR-010-13	Retaining Ring.....	1
7	112467	Retainer – Float.....	1
8	271621	Probe & Switch.....	1
9	122674	Float Assy.....	1
10	67500-72	O Ring.....	1
11	271112-1	Box – Steam Heat.....	1
12	WS-010-40	Washer – Thrust.....	2
13	WL-014-31	Lockwasher 1/2 External Shake proof (SST).....	2
14	NS-018-28	Jam Nut 1/2 – 20 Hex Fin.....	2
15	288465	Lid & Gasket Assy. (Incls. Item 16).....	1
16	112007	Gasket.....	1
17	SD-012-20	Self- Tapping Screw 8-32 x 1/2 Phil. Truss Hd., Type T.....	4
	294357-1	Connector.....	1
	294357-2	Connector.....	1



STEAM COIL HEAT

STEAM COIL HEAT

ILLUS.	PART	NAME OF PART	AMT
1	FP-052-09	Pipe Plug 3/4 SST Sq.Hd.....	2
2	329243	Coil – Steam.....	1
3	FP-080-17	Nipple 3/4 x2 (TBE; 1 1/2 RTOE)(SST).....	1
4	WS-013-45	Washer.....	1
5	WS-013-45	Washer.....	1
6	FP-053-09	Lock Nut 3/4 NPSL (SST).....	1
7	FP-013-22	Elbow 3/4 × 90 ⁰	1
8	FP-036-12	Nipple 3/4 × 7 3/4 TBE.....	1
9	FP-022-17	Union 3/4 (Grd. Seat).....	1
10	FP-036-92	Nipple 3/4 × 1 3/8 TBE.....	1
11	118317	Steam Trap (21-50 P.S.I.).....	1
12	FP-080-17	Nipple 3/4 x2 (TBE; 1 1/2 RTOE)(SST).....	1
13	WS-013-45	Washer.....	1
14	WS-013-45	Washer.....	1
15	FP-053-09	Lock Nut 3/4 NPSL (SST).....	1
16	FP-013-22	Elbow 3/4 × 90 ⁰	1
17	FP-087-48	Nipple.....	1
18	FP-013-22	Elbow(3/4 × 90 ⁰).....	1
19	FP-036-07	Nipple 3/4.....	1
20	FP-013-22	Elbow(3/4 × 90 ⁰).....	1
21	FP-036-92	Nipple 3/4 × 1 3/8 TBE.....	1
22	FP-022-17	Union 3/4 (Grd. Seat).....	1
23	FP-036-11	Nipple 3/4.....	1
24	270329-1	Sol. valve (Steam).....	1
25	270318-1	Coil – Sol. valve (Steam).....	1
26	270336	Service Kit- Solenoid Valve.....	1
27	FP-059-22	Nipple 3/4 × 1 3/4 TBE.....	1
28	FP-013-22	Elbow(3/4 × 90 ⁰).....	1
29	FP-036-92	Nipple 3/4 × 1 3/8 TBE.....	1
30	FP-013-22	Elbow(3/4 × 90 ⁰).....	1
31	FP-036-92	Nipple 3/4 × 1 3/8 TBE.....	1
32	186922	Line Strainer 3/4 (Brass).....	1



ECLECTRIC HEAT

ECLECTRIC HEAT

ILLUS.	PART	NAME OF PART	AMT
1	473275-1	Heater – tank Electric (200v/3Ph, 7.5kw)	1
2	473275-2	Heater – tank Electric (220v/1Ph, 7.5kw)	1
3	473275-6	Heater – tank Electric (380v/50Hz/3Ph, 7.5kw)	1
4	473276-1	Heater – tank Electric (200v/3Ph, 5kw)	1
5	473276-2	Heater – tank Electric (220v/3Ph, 5kw)	1
6	473276-6	Heater – tank Electric (380v/3Ph, 5kw) (C44BW).....	1
7	SC-041-13	Cap Screw 5/16-18 x1 Hex Hd. (SST).....	2
8	WS-017-08	Washer.....	2
9	WL-006-23	Lockwasher 5/16 Medium (SST).....	2
10	NS-015-11	Nut 5/16 – 18 Hex.....	2
11	SC-041-13	Cap Screw 5/16-18 x1 Hex Hd. (SST).....	6
12	WS-029-05	Washer.....	12
13	WL-006-23	Lockwasher 5/16 Medium (SST).....	6
14	NS-015-11	Nut 5/16 – 18 Hex.....	6
15	67500-72	O Ring.....	1
16	186091	Probe & Switch Assy. (4 Wire)(Incls. Item 19).....	1
17	328495	Probe & Switch Assy. (2 Wire)(Incls. Item 19).....	1
18	67500-72	O Ring.....	1
19	122674	Float Assy.....	1
20	271109	Gasket – Mounting.....	1
21	742325	Plate – Mounting.....	1
22	742212	Bracket – Thermostat.....	1
23	NS-031-15	Stop Nut 10-24 Hex (SST).....	2
24	742337	Box - Electric.....	1
25	271123	Protector- High Limit.....	1
26	SC-021-08	Mach. Screw 6-32 x 3/8 Rd. Hd. (SST).....	2
27	NS-031-50	Stop Nut 6-32 Hex (SST).....	2
28	293946	Sleeve.....	1
29	742228	Lid & Gasket Assy. (Incls item 30).....	1
30	112005	Gasket (Lid).....	1
31	NS-031-15	Nut.....	4
32	WS-010-40	Washer.....	2
33	WL-014-31	Lockwasher 1/2 External Shake proof (SST).....	2
34	NS-018-28	Jam Nut 1/2 – 20 Hex.....	2
35	293598	Gasket – heater Mounting.....	1
	294357-1	Housing – Connector (Nat).....	1
	294357-2	Housing – Connector (Black).....	1