



INSTRUCTION MANUAL

... with Replacement Parts



MODEL 4822 CHOPPER

(INCLUDES MOTOR PARTS)

ML-33819 (4822 FS) (REAR MOUNTED SWITCH)
ML-33817 (4822) (REAR MOUNTED SWITCH)

THIS MANUAL REPLACES AND SHOULD BE
USED INSTEAD OF FORM 12963B (7-82)

PRIOR ML'S COVERED IN THIS MANUAL:

ML-19611 (4822FS) (REAR MOUNTED SWITCH)
ML-19612 (4822) (REAR MOUNTED SWITCH)
ML-19613 (4822 FS) (FRONT MOUNTED SWITCH)
ML-19614 (4822) (FRONT MOUNTED SWITCH)

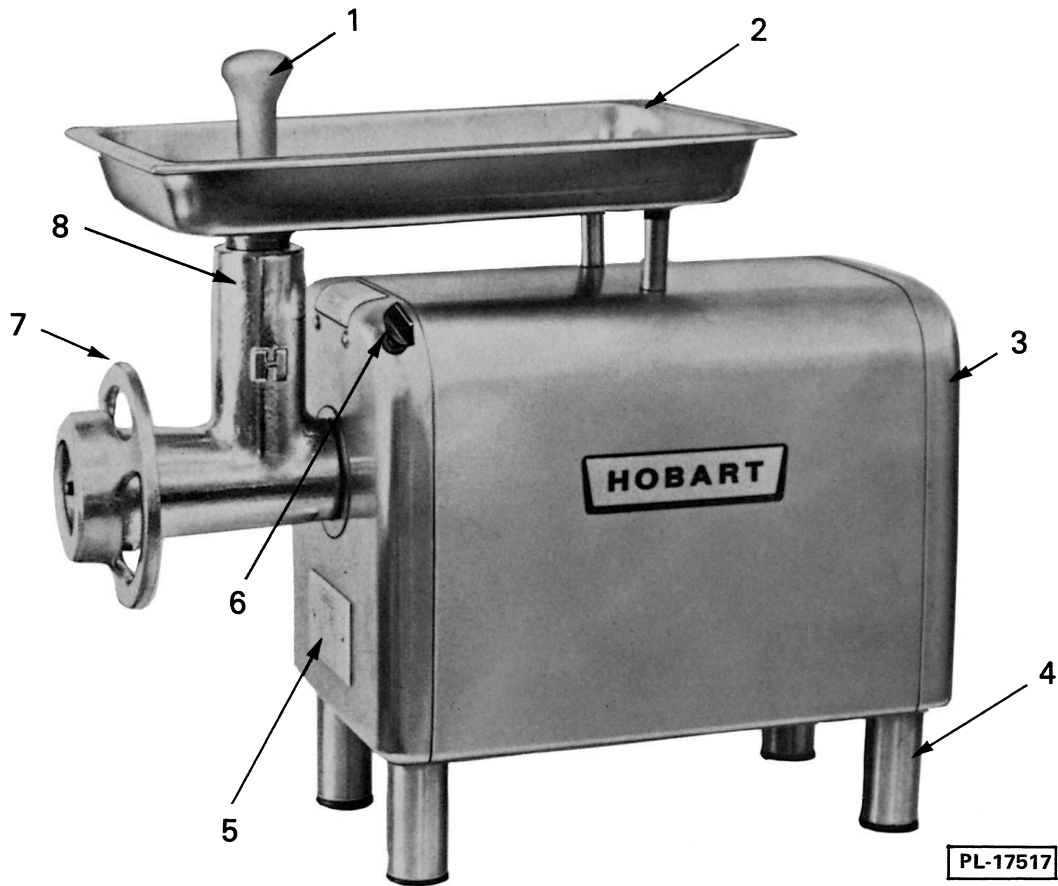


Fig. 1

Installation, Operation and Care of MODEL 4822 CHOPPER

Save These Instructions

GENERAL

The 4822 Chopper uses a Hobart built 1-1/2 H.P. motor. It will grind 16 lbs. per minute, first cutting, through a 1/8" plate.

The 4822 F.S. will grind 20 to 22 lbs. per minute, first cutting, through a 1/8" plate.

The transmission case is packed with a special grease at the factory to assure years of normal operation.

INSTALLATION

UNPACKING

Remove the carton from around the machine. Remove the four bolts holding the machine to the skid. Unpack the chopper attachment carton.

LEGS

The four leg assemblies (4, Fig. 1) are removed and packed in a separate carton for shipment. Unpack, and reassemble these legs by screwing them into

the four tapped holes of the base. The rubber feet on these legs cushion the machine. Under normal operation, the machine need not be bolted down.

ELECTRICAL CONNECTION

WARNING: DISCONNECT ELECTRICAL POWER SUPPLY AND PLACE A TAG, AT FUSED DISCONNECT SWITCH, INDICATING CIRCUIT IS BEING WORKED ON.

Electrical connections should be made by qualified workmen who will observe all applicable Safety Codes and the National Electrical Code.

Before making electrical connection, check the specifications on the data plate (5, Fig. 1) to make sure they agree with those of your electrical service.

A cord with plug is furnished as standard equipment on single phase machines.

The base on the underside of the machine is tapped for 1/2" conduit should a permanent installation be required. Remove the retaining screws and the back panel (3, Fig. 1). Bring the conductors up through this tapped hole and connect directly to the switch. It is **IMPORTANT** to use the proper conductor (wire) and fuse sizes. These are listed below and also on the tag attached to the machine.

Volts	PH	Max. Time Delay Fuse Size	Min. Conductor Ampacity	60° C Cu Wire Size
200-230	3	6	15	14
460	3	3	15	14

Three phase motors should be connected so that the attachment runs counterclockwise facing the attachment hub.

A check must be made to verify correct direction of rotation. Energize machine momentarily by turning switch ON then OFF.

If rotation is incorrect, **DISCONNECT ELECTRICAL POWER SUPPLY** and interchange any two of the power input leads at the switch.

Energize machine momentarily to verify correct direction of rotation.

CLEANING AND SANITIZING

The chopper must be thoroughly cleaned and sanitized after installation and before being placed into service.

Cleaning Supplies (Not Provided)

Recommended cleaning and sanitizing supplies include a 12" handle nylon bristle brush that will slide through the cylinder, a two compartment pail for cleaning solutions, a pail for sanitizing solution, a scrap pail, clean cloths, and a spray bottle.

Solutions

For cleaning, a powdered detergent such as Soilax or Spic 'n' Span is recommended. Do not use liquid soaps as they will corrode metal surfaces. Prepare a hot detergent solution in one side of the two compartment pail. Fill the other compartment with warm potable rinse water.

Mix a sanitizing solution by adding one tablespoon of household bleach (5.25%) or an iodophor sanitizer such as Iodet, to one gallon of cool water in a pail. This makes a 200 ppm solution. Use this solution to fill the spray bottle as well as the pail for sanitizing.

DISCONNECT ELECTRICAL POWER SUPPLY and thoroughly clean and sanitize: the feed pan (2, Fig. 1); feed stomper (1, Fig. 1); chopper cylinder assembly (8, Fig. 1); worm assembly; knife; plate; adjusting ring (7, Fig. 1) and machine housing.

Clean Up

Rinse all buckets, brushes, the spray bottle and any other tools in the remaining detergent and sanitizing solutions. The cleaning cloths used should be sent to a laundry for cleaning or discarded.

ASSEMBLY

Prior to assembly a light coating of Factopure T-70 oil (supplied) should be applied to surfaces of all parts.

Check to assure the hub and socket are clean and clear of any obstruction. Insert the cylinder assembly (8, Fig. 1) with a slight twisting motion toward the left. The cylinder stop pin in the attachment will contact the side of the hole that receives it. Tighten the thumb screw (6, Fig. 1). **NOTE:** Upon disassembly it is only necessary to loosen the thumb screw about three turns. It should never be removed. Slide the worm into the cylinder and rotate until the square shank of the worm locks into the hub drive. Install the knife, with cutting edges out, and the plate, making sure the notch aligns with the pin in the bottom of the cylinder. Thread the adjusting ring (7, Fig. 1) on hand tight. Install the feed pan (2, Fig. 1) and feed stomper (1, Fig. 1). **NOTE:** On F.S. Models tighten the feed



Fig.2

pan thumb screws (1, Fig. 2), holding the pan securely to the chopper attachment assembly. **NOTE:** The knife and plate depend on meat for lubrication, therefore, the chopper should never be operated without meat.

OPERATION

Cut the meat into strips, turn the machine ON and feed meat into the chopper, using the feed stomper (1, Fig. 1) only as needed. If the strips are cut to proper size, they will feed without assistance from the feed stomper, allowing both hands of the operator free to feed meat. When running meat through the chopper a second time, more speed is attained by feeding small quantities at a time than by trying to force large amounts with the feed stomper.

The feed pan (2, Fig. 1) should always be kept in place in the cylinder. It not only makes regular feeding easy, but keeps the chopper attachment ready for immediate use. The fineness to which the meat is cut is governed by the size of the holes in the perforated plate, not by the tension put on the adjusting ring (7, Fig. 1). Do not tighten the adjusting ring more than hand tight.

Remove the entire chopper attachment (8, Fig. 1) each time after using, and place it in the refrigerator until it is needed again.

MAINTENANCE

WARNING: DISCONNECT ELECTRICAL POWER SUPPLY AND PLACE A TAG, AT FUSED DISCONNECT SWITCH, INDICATING CIRCUIT IS BEING WORKED ON BEFORE BEGINNING ANY MAINTENANCE PROCEDURE.

MACHINE CLEAN UP

The machine should be thoroughly cleaned at the end of an operating day or when it is to be stored. Refer to the CLEANING AND SANITIZING for proper procedure.

HUB DRAIN

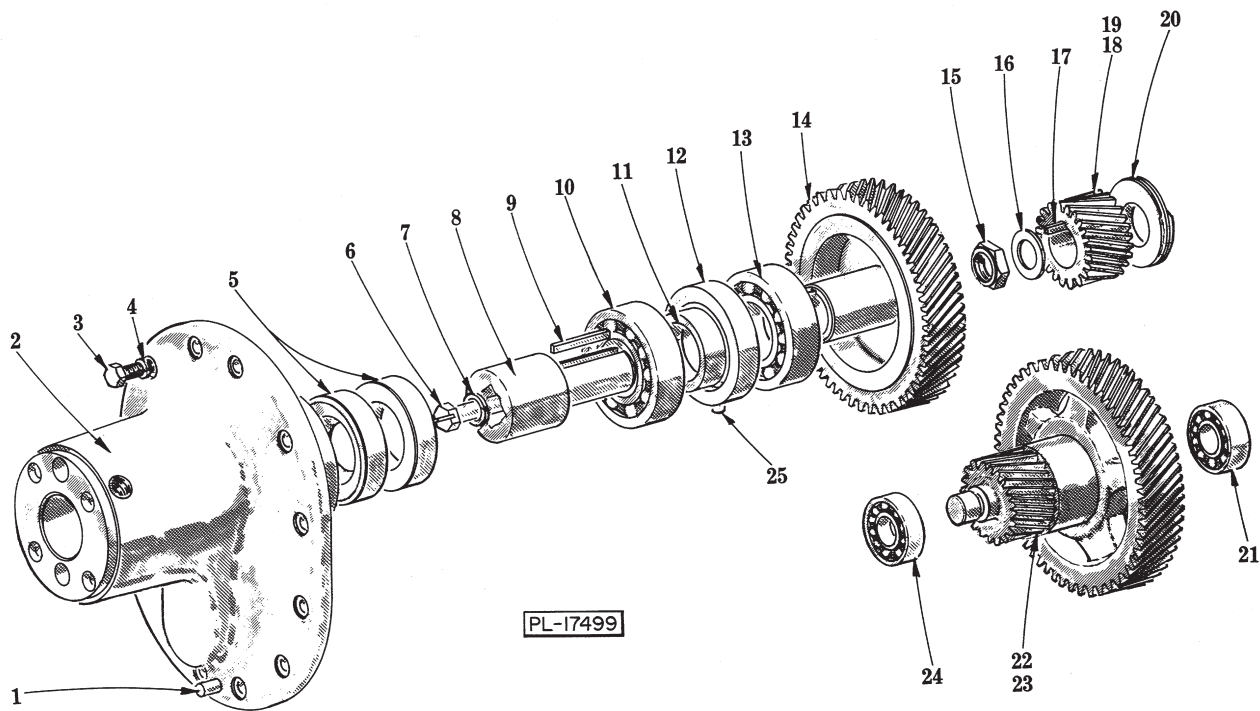
A drain hole in the trim washer allows any meat juices to drain from the hub. This hole should be inspected periodically to make sure that it is free of obstructions. A small wire can be used to remove any material which may have accumulated.

AIR INTAKE

Under normal operating conditions the motor air intake screen, located in the base of the chopper, will need little or no attention. However, in some installations where saw dust or other foreign materials are present in the air, this intake screen may become partially or completely covered. Where an adverse dust condition does exist, periodically check the screen and wipe clean with a rag or brush as required.

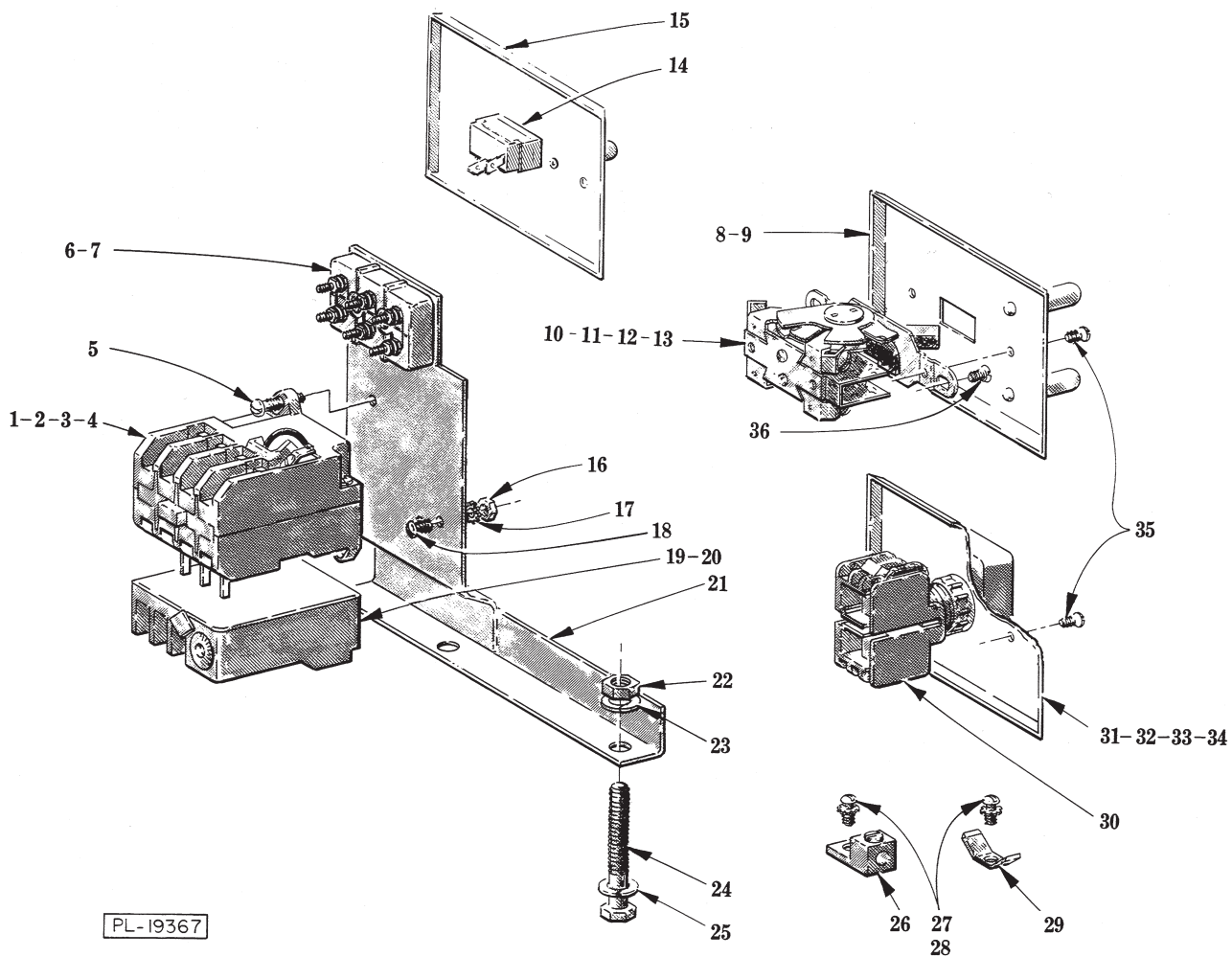
STORAGE

The chopper should be completely cleaned and covered with a towel or other suitable cover when it is not to be used in the immediate future.



ATTACHMENT HUB AND TRANSMISSION UNIT

ILLUS. PL-17499	PART NO.	NAME OF PART	AMT.
1	D-11800-116	Dowel	1
2	S-64815	Hub - Attachment	1
3	SC-37-75	Cap Screw - 5/16"-18 x 3/4" Hex Hd	12
4	WL-3-47	Lock Washer - 5/16" Medium	12
5	B-23618	Seal - Grease	2
6	SC-36-79	Cap Screw - 3/8"-24 x 2-3/4" Slotted Hex Hd	1
7	WL-4-2	Lock Washer - 3/8" Light	1
8	P-15259	Sleeve - Square Drive	1
9	C-109070-17	Key	1
10	BB-6-40	Ball Bearing - MRC 207S	1
11	M-15261	Collar - Inner Spacing	1
12	M-15260	Collar - Outer Spacing	1
13	BB-6-40	Ball Bearing - MRC 207S	1
14	C-15325	Hub & Chopper Drive Gear Assy. (58T)	1
15	V-9435	Lock Nut	2
16	WS-11-1	Washer	1
17	C-109070-2	Key	1
18	M-21783	Pinion - Motor (23T) (60 Hz.)	1
19	C-117156	Pinion - Motor (26T) (50 Hz.)	1
20	M-103961	Deflector - Grease	1
21	BB-17-9	Ball Bearing - N.D. #3203	1
22	P-65128	Main Dr. Gear & Co-Shaft Pinion Assy. (67T & 19T) (60 Hz.)	1
23	C-117157	Main Dr. Gear & Co-Shaft Pinion Assy. (63T & 19T) (50 Hz.)	1
24	BB-17-9	Ball Bearing - N.D. #3203	1
25	V-15262	Pin - Spacer Retaining	1



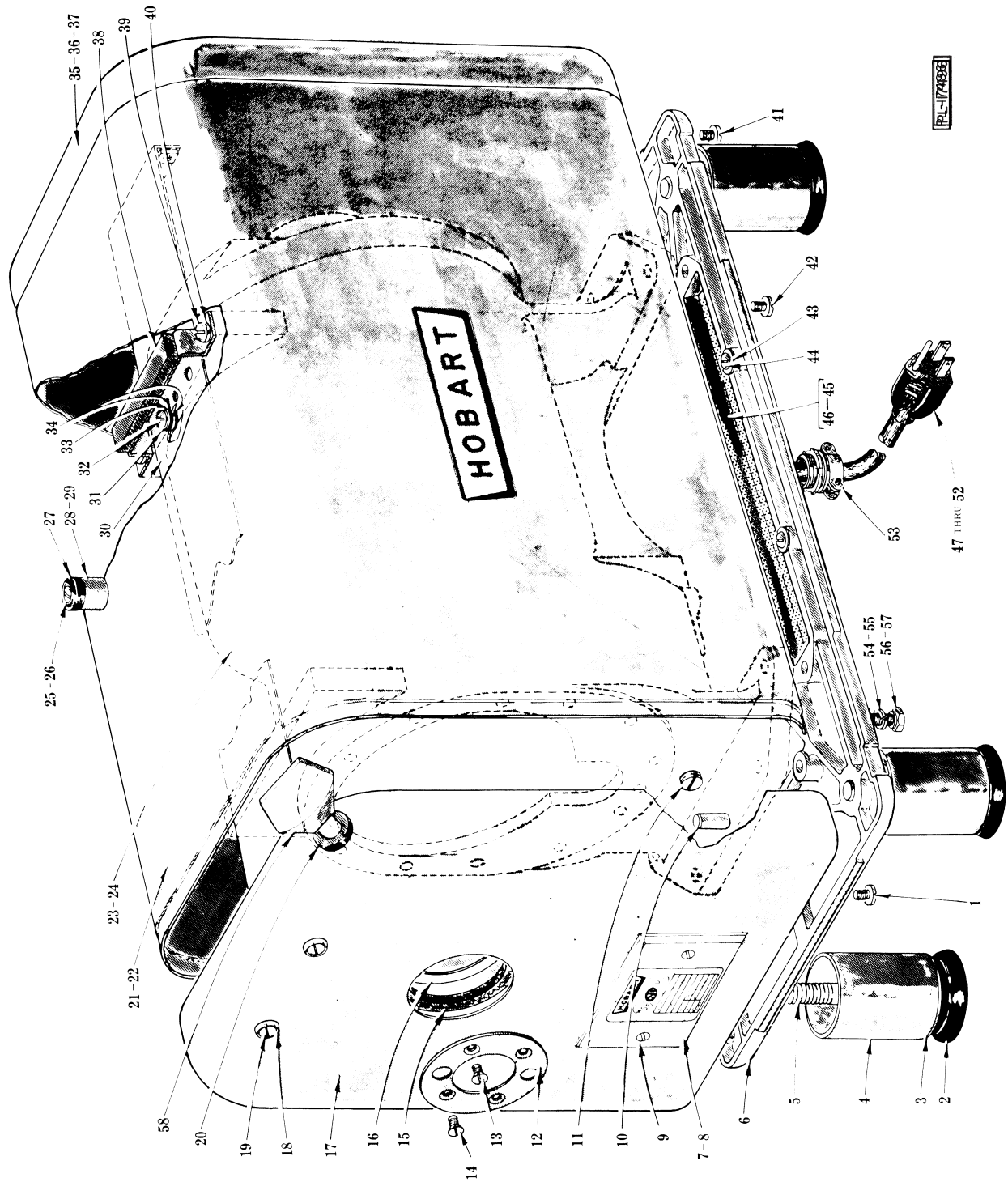
ELECTRICAL UNIT

ELECTRICAL UNIT

ILLUS. PL-19367	PART NO.	NAME OF PART	AMT.
*1	C-87713-54-2	Contactora (380 V., 3 Ph./N; 220 V.)	1
*2	C-87713-54-3	Contactora (415 V., 3 Ph./N; 240 V.)	1
*3	C-87713-54-4	Contactora (380 V.)	1
*4	C-87713-54-5	Contactora (415 V.)	1
**5	SC-8-41	Mach. Screw - #10-32 x 1/2" Rd. Hd	2
*6	B-116793-1	Block - Terminal	1
**7	SC-8-41	Mach. Screw - #10-32 x 1/2" Rd. Hd	2
8	B-124564-1	Plate - Switch (1 Ph. W/Overload)	1
9	B-124564-2	Plate - Switch (3 Ph.)	1
10	C-292052	Switch & Plate Assy. (1 Ph. W/O Overload) (Mach. ML's 19611, 19612, 19613 & 19614)	1
11	P-87810-19-1	Switch (1 Ph., W/ Overload)	1
12	---	Heater Element - Starter (Give Elec. Spec., Mach. Model & Motor Type)	AR
13	P-87711-138-1	Switch (3 Ph.)	1
14	P-87711-184-1	Switch (1 Ph. W/O Overload) (Mach. ML's 33817 & 33819)	1
15	C-291961	Switch Plate (1 Ph. W/O Overload)	1
**16	NS-9-7	Mach. Nut - #6-32 Hex	1
**17	WL-7-1	Lock Washer - #6 Ext. Shakeproof	2
**18	SC-21-8	Mach. Screw - #6-32 x 3/8" Rd. Hd	1
*19	C-88196-7-6	Relay - Thermal Overload (415/380 V.)	1
*20	C-88196-7-7	Relay - Thermal Overload (240/220 V.)	1
*21	C-121951	Contactora Bracket Assy	1
**22	NS-17-8	Jam Nut - 5/16"-18 Hex Fin	2
**23	WL-3-47	Lock Washer - 5/16" Medium	2
**24	B-119935	Bolt - 5/16"-18 x 2" Hex Hd. "Special"	2
**25	WL-3-47	Lock Washer - 5/16" Medium	2
26	C-118544-1	Lug - Solderless (60 Hz., 3 Ph.)	1
27	SC-27-29	Mach. Screw - #8-32 x 3/8" Rd. Hd	1
28	WL-10-1	Lock Washer - #8 Ext. Shakeproof	1
*29	C-65890-90	Terminal - Grounding	1
**30	C-87711-142-1	Switch	1
**31	C-119953	Plate - Switch (Use with item #30)	1
*32	SC-21-8	Mach. Screw - #6-32 x 3/8" Rd. Hd. (Grounding Screw)	1
*33	WL-7-1	Lock Washer - #6 Ext. Shakeproof	1
*34	NS-9-7	Mach. Nut - #6-32 Hex	1
35	SC-30-6	Mach. Screw - #6-32 x 3/8" Oval Hd	2
36	M-74835	Screw - Switch Mounting	2

*50 Hz.

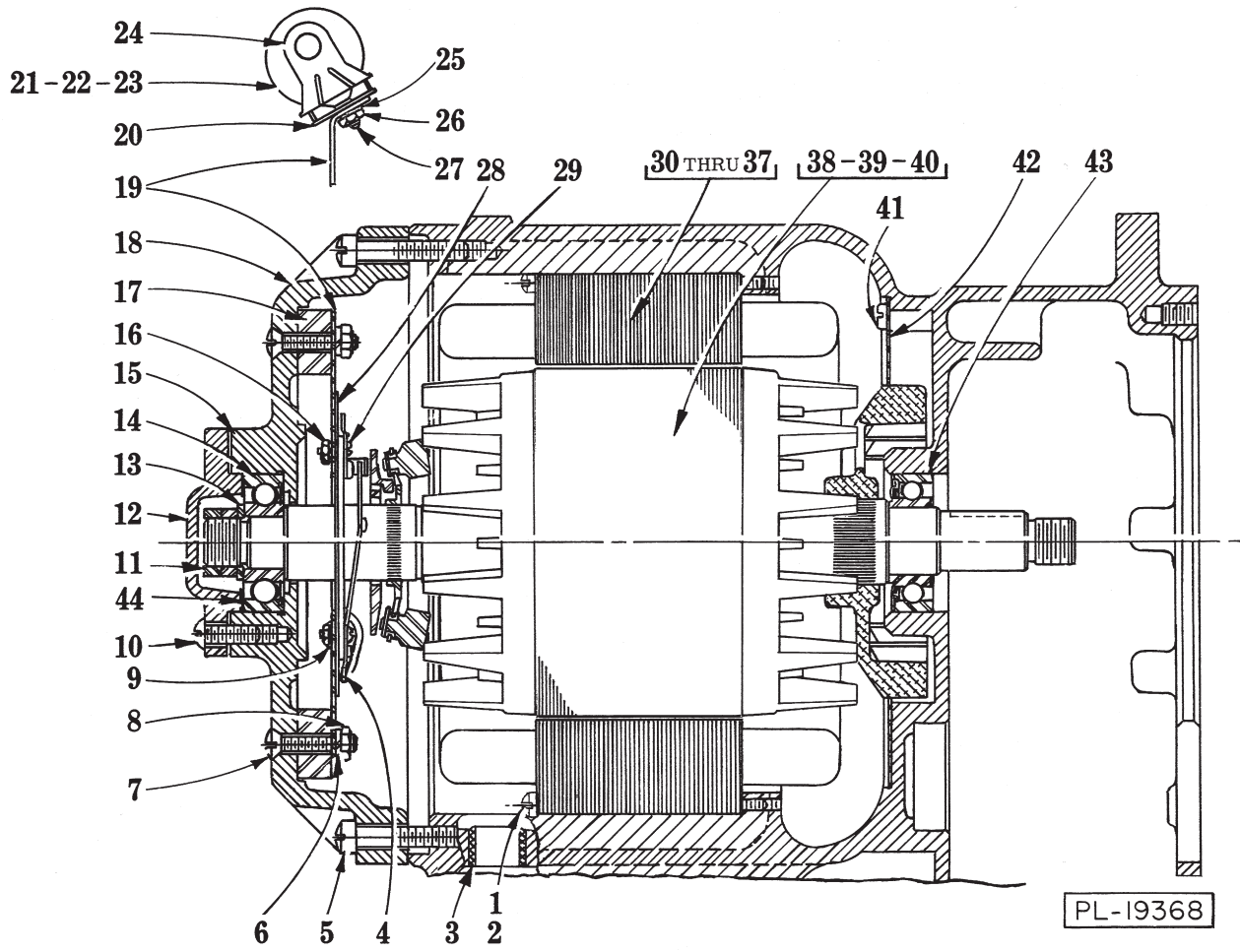
**50 Hz., Except 115 V., 50 Hz., 1 Ph.



MOTOR AND HOUSING UNIT

MOTOR AND HOUSING UNIT

ILLUS. PL-17496	PART NO.	NAME OF PART	AMT.
1	SC-25-7	Mach. Screw - #10-24 x 5/16" Bind. Hd	4
2	M-83681	Foot - Rubber	4
3	M-64814	Cap - Leg End	4
4	B-290060-2	Leg	4
5	B-290061-2	Stud - Leg	4
6	D-102214-2	Base Assy. (Incls. items #43, 44, 45 & 46)	1
7	C-117867-1	Plate - Mach. Data (Give Serial Number & Elec. Spec.)	1
8	C-117867-2	Plate - Mach. Data (Give Serial Number & Elec. Spec.) (50 Hz.)	1
9	SC-30-6	Mach. Screw - #6-32 x 3/8" Oval Hd	2
10	D-11800-141	Dowel	2
11	V-15250-1	Plug - 1/4" Pipe (Special)	1
12	P-64820	Washer - Trim (Attach. Hub)	1
13	SC-22-16	Mach. Screw - #10-24 x 5/16" Flat Hd	1
14	SC-22-17	Mach. Screw - #10-24 x 3/8" Flat Hd	3
15	M-64818	Gasket - Attachment Hub	1
16	M-64819	Washer - Gasket Retaining	1
17	E-64804-5	Panel - Front Housing	1
18	WC-4-10	Csk. Washer - #10	2
19	SC-15-36	Mach. Screw - #10-24 x 5/8" Oval Hd	2
20	M-64824	Grommet (Thumb Screw)	1
21	C-290481-1	Housing Assy. (60 Hz.)	1
22	C-290481-2	Housing Assy. (50 Hz.)	1
23	ML-16329	Motor (Give Elec. Spec.)	1
24	T-65056	Motor Frame & Gear Case	1
25	SC-60-10	Mach. Screw - #8-32 x 3" Rd. Hd	2
26	SC-9-96	Mach. Screw - #8-32 x 1-1/4" Rd. Hd. (Use with FS Chopper Attach.)	2
27	V-19105-1	Bumper	2
28	B-119911	Spacer - Pan Rest	2
29	M-65999-2	Spacer - Pan Rest (Use with FS Chopper Attach.)	2
30	R-64808-1	Bracket - Locating	1
31	WL-3-37	Lock Washer - 1/4" Medium	4
32	SC-8-81	Mach. Screw - 1/4"-20 x 1/2" Rd. Hd	4
33	WS-3-20	Washer	4
34	M-66185	Washer (Rubber)	8
35	E-64805-5	Panel - Rear Housing	1
36	SC-15-36	Mach. Screw - #10-24 x 5/8" Oval Hd	2
37	WC-4-10	Csk. Washer - #10	2
38	M-65116	Center Panel Brkt. & Compression Strip Assy	2
39	SC-8-81	Mach. Screw - 1/4"-20 x 1/2" Rd. Hd	4
40	WL-3-37	Lock Washer - 1/4" Medium	4
41	SC-25-7	Mach. Screw - #10-24 x 5/16" Bind. Hd	4
42	SC-25-7	Mach. Screw - #10-24 x 5/16" Bind. Hd	10
43	WS-2-21	Washer	4
44	SC-8-9	Mach. Screw - #10-24 x 3/8" Rd. Hd	4
45	P-65144	Screen - Air Inlet	1
46	P-65143	Screen - Air Outlet (Not Shown)	1
47	B-117542-7	Cord & Plug Assy. (Under 150 V., 3 Conductor)	1
48	B-117542-12	Cord & Plug Assy. (230 V., 60 Hz., 1 Ph., 3 Conductor)	1
49	B-117542-24	Cord Assy. (I.E.C.) (220/240 V., 50 Hz., 1 Ph.)	1
50	C-117613-5	Cord Assy. (I.E.C.) (380 V., 50 Hz., 3 Ph.; /415 V., 50 Hz., 3N)	1
51	C-117613-8	Cord Assy. (I.E.C.) (220/240/380/415 V., 50 Hz., 3 Ph.)	1
52	C-117542-36	Cord Assy. (I.E.C.) (115 V., 50 Hz., 1 Ph.)	1
53	FE-2-45	Connector - Cord (1 Ph.)	1
54	WL-3-47	Lock Washer - 5/16" Medium (Use with 60 Hz./115 V., 50 Hz., 1 Ph.)	10
55	WL-3-47	Lock Washer - 5/16" Medium (Use with 50 Hz., except 115 V., 50 Hz., 1 Ph.)	8
56	SC-36-40	Cap Screw - 5/16"-18 x 1-1/4" Hex Hd. (Use with 60 Hz./115 V., 50 Hz., 1 Ph.)	10
57	SC-36-40	Cap Screw - 5/16"-18 x 1-1/4" Hex Hd. (Use with 50 Hz., except 115 V., 50 Hz., 1 Ph.)	8
58	C-108197-4	Thumb Screw Assy	1



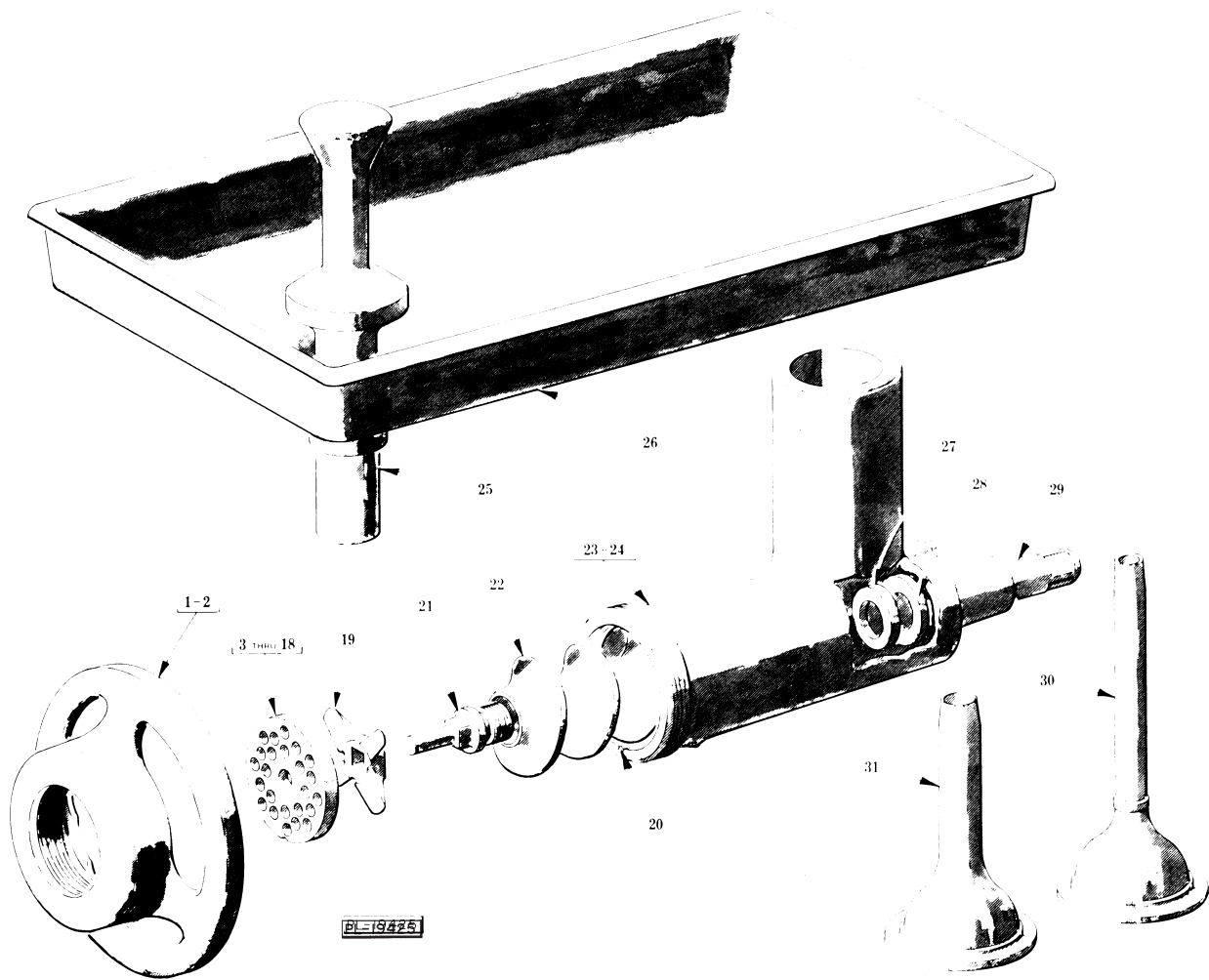
MOTOR PARTS

MOTOR PARTS

ILLUS. PL-19368	PART NO.	NAME OF PART	AMT.
*1	SC-12-51	Mach. Screw - #10-24 x 3-1/2" Fil. Hd	8
**2	SC-11-28	Mach. Screw - #10-24 x 2-1/2" Fil. Hd	8
3	V-6651	Bushing - Insulating	1
*4	C-294577	Starting Switch (Stationary Part)	1
5	SC-12-2	Mach. Screw - 5/16"-18 x 1-1/2" Fil. Hd	4
*6	WL-3-38	Lock Washer - 1/4" Medium	2
*7	SC-16-24	Mach. Screw - 1/4"-20 x 1-1/4" Oval Hd	2
*8	NS-13-2	Full Nut - 1/4"-20 Hex Fin	2
*9	WL-3-9	Lock Washer - #6 Medium	2
10	SC-60-22	Mach. Screw - 5/16"-18 x 3/4" Rd. Hd. (1 Ph.)	4
11	V-9435	Lock Nut	2
12	M-65246	Cap - Bearing	1
13	WS-11-1	Washer	1
14	BB-17-17	Ball Bearing - N.D. #7604	1
15	M-65247	Gasket - Bearing Cap	1
*16	NS-9-7	Mach. Nut - #6-32 Hex	2
*17	M-73145-2	Post - Switch Retaining Plate	2
18	S-89055-2	Bracket - Bearing (Switch End)	1
*19	R-73144	Plate - Retaining (Starting Switch)	1
*20	M-73216	Spacer - Capacitor Bracket	2
*21	D-70487-3	Capacitor	2
*22	C-70486-1	End Cap - Capacitor (60 Hz.)	2
*23	M-66622-1	End Cap - Capacitor (50 Hz.)	2
*24	P-66621-1	Bracket - Capacitor	2
*25	WL-8-13	Lock Washer - #10 Int. Shakeproof	4
*26	NS-9-22	Mach. Nut - #10-24 Hex	4
*27	SC-14-57	Mach. Screw - #10-24 x 1/2" Flat Hd	4
*28	M-73156	Insulator - Starting Switch	1
*29	SC-9-67	Mach. Screw - #6-32 x 5/8" Rd. Hd	2
*30	P-65477-26-1	Stator Assy. (115 V., 60 Hz.)	1
*31	P-65477-26-2	Stator Assy. (200 V., 60 Hz.)	1
*32	P-65477-26-3	Stator Assy. (230 V., 60 Hz.)	1
*33	D-65477-141-1	Stator Assy. (50 Hz.)	1
**34	P-65478-33-1	Stator Assy. (200 V., 60 Hz.)	1
**35	P-65478-33-2	Stator Assy. (230 V., 60 Hz.)	1
**36	P-65478-33-3	Stator Assy. (460 V., 60 Hz.)	1
**37	D-65478-118-1	Stator Assy. (50 Hz.)	1
*38	P-22275-54	Rotor Assy. (60 Hz.)	1
*39	P-22275-64	Rotor Assy. (50 Hz.)	1
**40	P-15747-217	Rotor Assy. (50/60 Hz.)	1
41	SC-18-11	Mach. Screw - #10-24 x 3/8" Pan Hd	3
42	P-65121	Shroud - Fan	1
43	BB-16-22	Ball Bearing - N.D. #C8505	1
44	B-294559	Washer	1

*1 Ph.

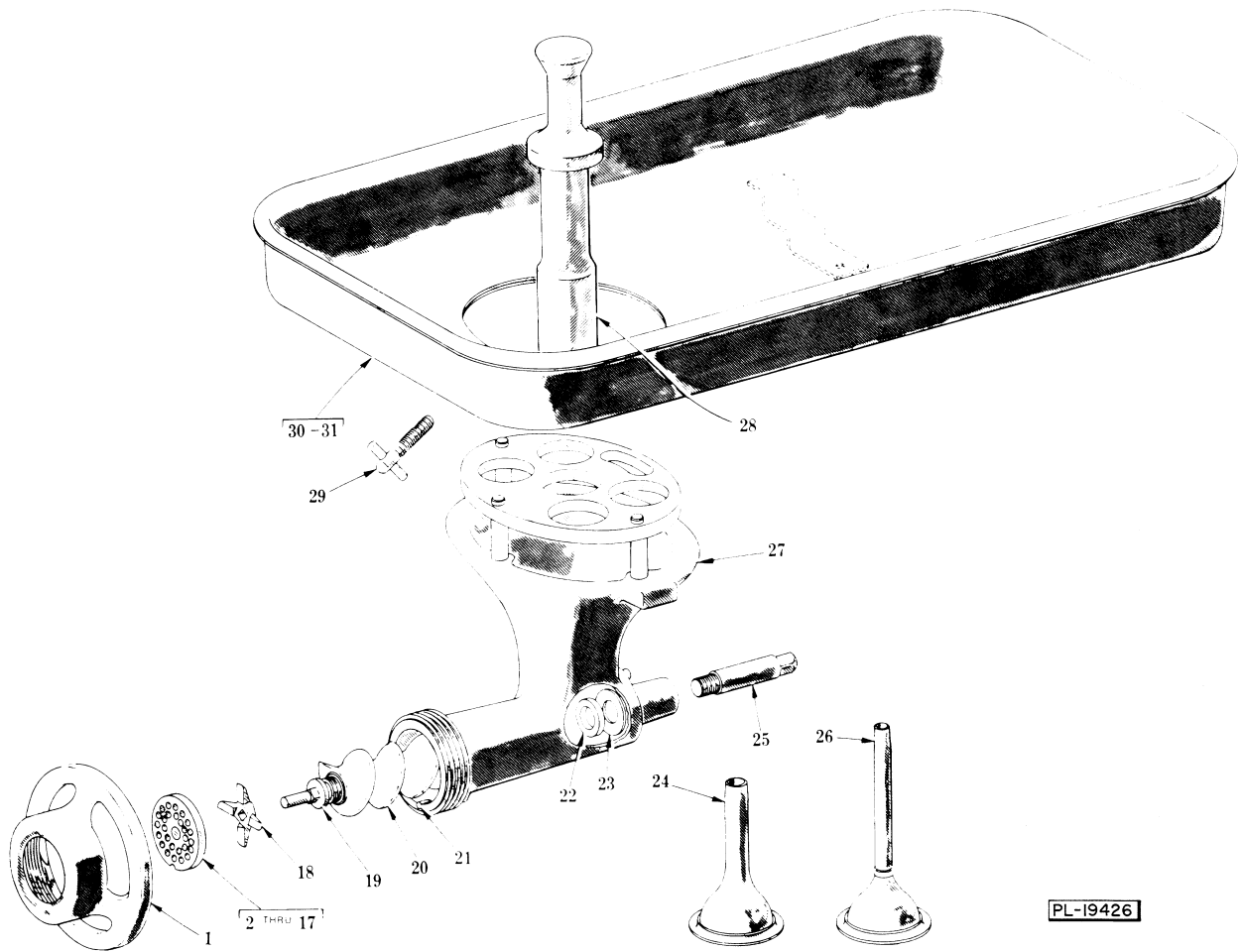
**3 Ph.



#22 CHOPPER ATTACHMENT UNIT (NSF)

#22 CHOPPER ATTACHMENT UNIT (NSF)

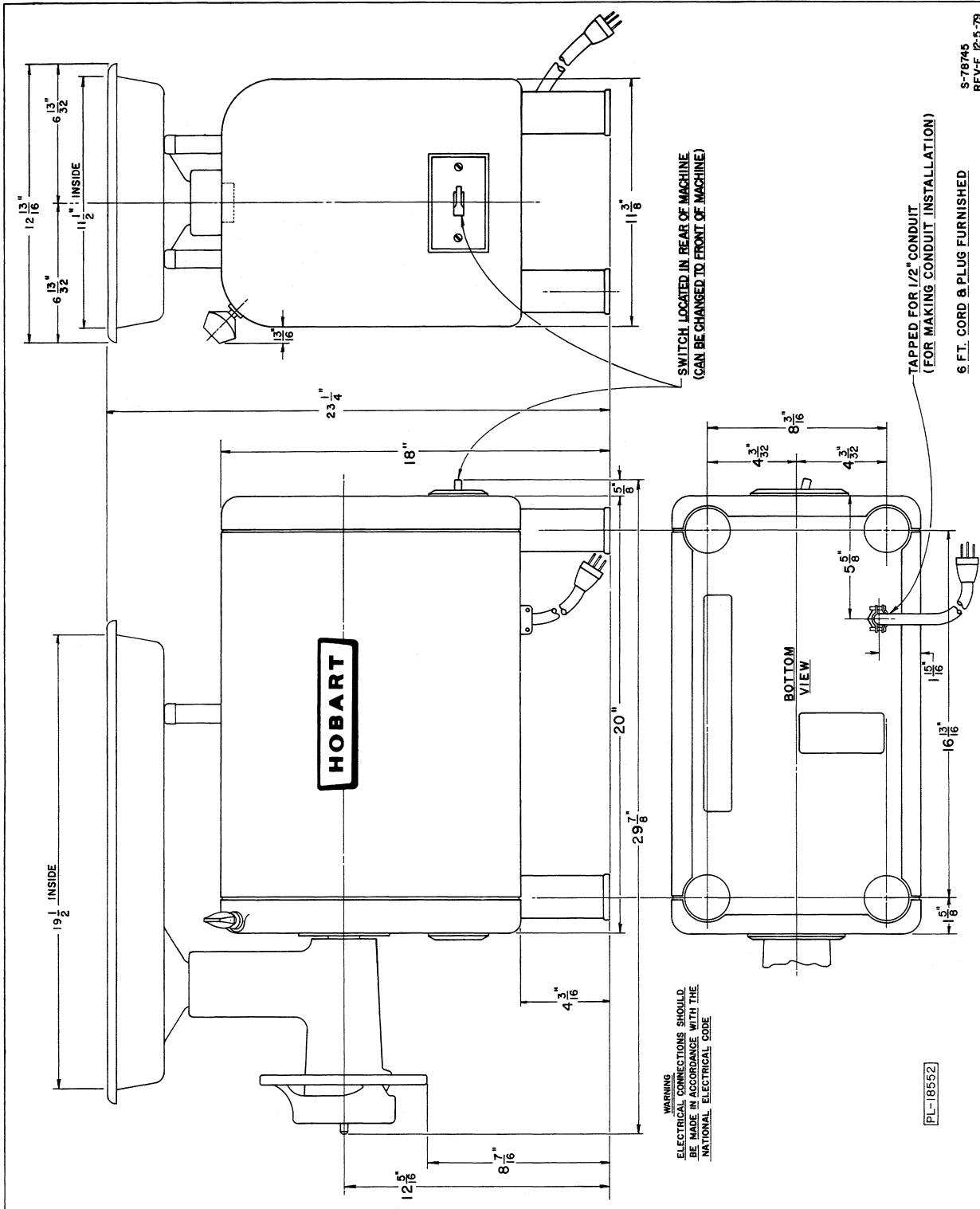
ILLUS. PL-19425	PART NO.	NAME OF PART	AMT.
1	R-77643-1	Ring - Adjusting (Brite Metal)	1
2	R-77643-2	Ring - Adjusting (Tinned)	1
3	C-16430-1	Chopper Plate (1/8" Dia. Holes) (Carbon Steel)	1
4	C-16431-1	Chopper Plate (3/16" Dia. Holes) (Carbon Steel)	1
5	C-16432-1	Chopper Palte (1/4" Dia. Holes) (Carbon Steel)	1
6	C-16433-1	Chopper Plate (3/8" Dia. Holes) (Carbon Steel)	1
7	C-16434-1	Chopper Plate (1/2" Dia. Holes) (Carbon Steel)	1
8	C-103969-1	Chopper Plate (5/8" Dia. Holes) (Carbon Steel)	1
9	C-16436-1	Chopper Plate (3/4" Dia. Holes) (Carbon Steel)	1
10	C-16437-1	Chopper Plate (15/16" Dia. Holes) (Carbon Steel)	1
11	C-16430-2	Chopper Plate (1/8" Dia. Holes) (Stay Sharp)	1
12	C-16431-2	Chopper Plate (3/16" Dia. Holes) (Stay Sharp)	1
13	C-16432-2	Chopper Plate (1/4" Dia. Holes) (Stay Sharp)	1
14	C-16433-2	Chopper Plate (3/8" Dia. Holes) (Stay Sharp)	1
15	C-16434-2	Chopper Plate (1/2" Dia. Holes) (Stay Sharp)	1
16	C-103969-2	Chopper Plate (5/8" Dia. Holes) (Stay Sharp)	1
17	C-16436-2	Chopper Plate (3/4" Dia. Holes) (Stay Sharp)	1
18	C-16437-2	Chopper Plate (15/16" Dia. Holes) (Stay Sharp)	1
19	E-290372	Knife - Chopper (Stay Sharp)	1
20	B-122983	Pin - Plate	1
21	M-15880	Stud - Plate	1
22	M-15881	Worm Assy. (Incls. items #21, 27 & 29)	1
23	D-119760-3	Chopper Cylinder Assy. Unit (Brite Metal) (Incls. items #20 & 28)	1
24	D-119760-1	Chopper Cylinder Assy. Unit (Tinned) (Incls. items #20 & 28)	1
25	A-122554	Feed Stomper (Plastic)	1
26	A-122555	Pan - Feed	1
27	V-4221	Washer - Worm Thrust	1
28	V-4839-1	Washer - Cylinder Thrust	1
29	M-7201	Stud - Sq. Drive	1
30	P-5193	Stuffer - Sausage (Sheep Casing)	1
31	M-5175	Stuffer - Sausage (Hog Casing)	1



#22 - FS CHOPPER ATTACHMENT UNIT (NSF)

#22 - FS CHOPPER ATTACHMENT UNIT (NSF)

ILLUS. PL-19426	PART NO.	NAME OF PART	AMT.
1	R-77643-2	Ring - Adjusting	1
2	C-16430-1	Chopper Plate (1/8" Dia. Holes) (Carbon Steel)	1
3	C-16431-1	Chopper Plate (3/16" Dia. Holes) (Carbon Steel)	1
4	C-16432-1	Chopper Plate (1/4" Dia. Holes) (Carbon Steel)	1
5	C-16433-1	Chopper Plate (3/8" Dia. Holes) (Carbon Steel)	1
6	C-16434-1	Chopper Plate (1/2" Dia. Holes) (Carbon Steel)	1
7	C-103969-1	Chopper Plate (5/8" Dia. Holes) (Carbon Steel)	1
8	C-16436-1	Chopper Plate (3/4" Dia. Holes) (Carbon Steel)	1
9	C-16437-1	Chopper Plate (15/16" Dia. Holes) (Carbon Steel)	1
10	C-16430-2	Chopper Plate (1/8" Dia. Holes) (Stay Sharp)	1
11	C-16431-2	Chopper Plate (3/16" Dia. Holes) (Stay Sharp)	1
12	C-16432-2	Chopper Plate (1/4" Dia. Holes) (Stay Sharp)	1
13	C-16433-2	Chopper Plate (3/8" Dia. Holes) (Stay Sharp)	1
14	C-16434-2	Chopper Plate (1/2" Dia. Holes) (Stay Sharp)	1
15	C-103969-2	Chopper Plate (5/8" Dia. Holes) (Stay Sharp)	1
16	C-16436-2	Chopper Plate (3/4" Dia. Holes) (Stay Sharp)	1
17	C-16437-2	Chopper Plate (15/16" Dia. Holes) (Stay Sharp)	1
18	E-290372	Knife - Chopper (Stay Sharp)	1
19	M-15880	Stud - Plate	1
20	P-68338	Worm Assy. (Incls. items #19, 22 & 25)	1
21	B-122983	Pin - Plate	1
22	V-4221	Washer - Worm Thrust	1
23	V-4839-1	Washer - Cylinder Thrust	1
24	M-5175	Stuffer - Sausage (Hog Casing)	1
25	M-7201	Stud - Square Drive	1
26	P-5193	Stuffer - Sausage (Sheep Casing)	1
27	R-85386	Chopper Cylinder & Guard Assy. (Guard 1-3/8" High) (Incls. items #21 & 23)	1
28	P-89272-8	Feed Stomper (Plastic)	1
29	M-22306	Clamp Screw Assy	1
30	R-112906-1	Feed Pan Assy. (Incls. item #29) (STL)	1
31	R-112906-2	Feed Pan Assy. (Incls. item #29) (SST)	1



S-76745
REV'E 12-5-79

INSTALLATION DIAGRAM